

**LATE DISTRIBUTION**

EDC COB &lt;edc.cob@edcgov.us&gt;

**DATE**

12/9/14

BOS 12/9/14

**Comment on 12-9-14 BOS Agenda Item #13-0510, Community Region Lines**

1 message

**Melanie Kramer** <melaniekramer2@aol.com>

Mon, Dec 8, 2014 at 5:51 PM

To: "To:" <bosone@edcgov.us>, "<bostwo@edcgov.us>" <bostwo@edcgov.us>, "<bostthree@edcgov.us>" <bostthree@edcgov.us>, "<bosfour@edcgov.us>" <bosfour@edcgov.us>, "<bosfive@edcgov.us>" <bosfive@edcgov.us>, "<edc.cob@edcgov.us>" <edc.cob@edcgov.us>

Dear Board of Supervisors,

I cannot attend the December 9, 2014 meeting because I need to take care of my mother and this email comment is to take the place of my personal attendance.

Please direct staff to begin the process to amend the Community Region Lines as stated in Measure O.

Measure O proposed to replace the Community Region Lines in Shingle Springs, Pollock Pines, Camino, and Cedar Grove with smaller Rural Region Lines, and reduce the Community Region Line along the Green Valley Road corridor. These are areas that are low density now and do not want to be a target for high-density development. Please note we are not against all development just high density urban development in these currently rural areas.

Thank you,  
Melanie Kramer  
Shingle Springs



EDC COB &lt;edc.cob@edcgov.us&gt;

---

**Comment on 12-9-14 BOS Agenda Item #13-0510, Community Region Lines**1 message

---

**Patti Dolan** <dolan@wildblue.net>

Mon, Dec 8, 2014 at 7:05 PM

To: bosone@edcgov.us, bostwo@edcgov.us, bosthree@edcgov.us, bosfour@edcgov.us, bosfive@edcgov.us, edc.cob@edcgov.us

Dear Board of Supervisors,

I cannot attend the December 9, 2014, meeting and you should be pleased that I can't, so this email comment is to take the place of my personal attendance.

I volunteered hours and days of my time offering petitions for our initiatives to the citizens of El Dorado County because I believe in the the changes they promote in an effort to save our rural character. Outside developers muddied the waters with a competing petition using aggressive paid signature gatherers. When their petition was approved for the ballot, they withdrew support of it, and spent huge sums against our initiatives.

Please direct staff to begin the process to amend the Community Region Lines as stated in Measure O. Measure O proposed to replace the Community Region Lines in Shingle Springs, Pollock Pines, Camino, and Cedar Grove with smaller Rural Region Lines, and reduce the Community Region Line along the Green Valley Road corridor. These are areas that are low density now and do not want to be a target for high-density development. This is the Board's opportunity to clear up the \$1,000,000 of misleading information that developers spent to defeat Measure O in the November election.

Thank you,

Don Dolan  
Shingle Springs



EDC COB &lt;edc.cob@edcgov.us&gt;

---

**Comment on 12-9-14 BOS Agenda Item #13-0510, Community Region Lines**

1 message

---

**taylorshack@sbcglobal.net** <taylorshack@sbcglobal.net>

Mon, Dec 8, 2014 at 7:34 PM

To: bosone@edcgov.us, bostwo@edcgov.us, bosthree@edcgov.us, bosfour@edcgov.us, bosfive@edcgov.us, edc.cob@edcgov.us

Dear Board of Supervisors,

I cannot attend the December 9, 2014, meeting and this email comment is to take the place of my personal attendance.

Please direct staff to begin the process to amend the Community Region Lines as stated in Measure O. Measure O proposed to replace the Community Region Lines in Shingle Springs, Pollock Pines, Camino, and Cedar Grove with smaller Rural Region Lines, and reduce the Community Region Line along the Green Valley Road corridor. These are areas that are low density now and do not want to be a target for high-density development. This is the Board's opportunity to clear up the \$1,000,000 of misleading information that developers spent to defeat Measure O in the November election.

Thank you,

Corrine and Dan Taylor  
, EDH, 95762





EDC COB &lt;edc.cob@edcgov.us&gt;

---

## Amend the Community Region Lines Please

1 message

---

Jason <jrhodewalt@hotmail.com>

Mon, Dec 8, 2014 at 7:38 PM

To: "bosone@edcgov.us" <bosone@edcgov.us>, "bostwo@edcgov.us" <bostwo@edcgov.us>, "bostthree@edcgov.us" <bostthree@edcgov.us>, "bosfour@edcgov.us" <bosfour@edcgov.us>, "bosfive@edcgov.us" <bosfive@edcgov.us>, "edc.cob@edcgov.us" <edc.cob@edcgov.us>

Dear Board of Supervisors,

I cannot attend the December 9, 2014, meeting and this email comment is to take the place of my personal attendance.

Please direct staff to begin the process to amend the Community Region Lines as stated in Measure O. Measure O proposed to replace the Community Region Lines in Shingle Springs, Pollock Pines, Camino, and Cedar Grove with smaller Rural Region Lines, and reduce the Community Region Line along the Green Valley Road corridor. These are areas that are low density now and do not want to be a target for high-density development. This is the Board's opportunity to clear up the \$1,000,000 of misleading information that developers spent to defeat Measure O in the November election.

More specifically, we as residents of Shingle Springs moved to this area to avoid urban development. It is very disheartening to find out now that this area has been designated for development. To be quite honest, if this much development were to occur I would be forced to move my family to a more rural area outside the county as I had originally intended.

Thank you,

Jason Rhodewalt  
Shingle Springs, CA





EDC COB &lt;edc.cob@edcgov.us&gt;

---

**Community Regions on 12-9-14 Board of Supervisors agenda**1 message

---

**Joey Ames** <joeyames@att.net>

Mon, Dec 8, 2014 at 8:36 PM

To: Ron Mikula Mikulaco &lt;bosone@edcgov.us&gt;

Cc: Shiva Frentzen &lt;bostwo@edc.us&gt;, Ron Briggs &lt;bosfour@edcgov.us&gt;, Norma Santiago &lt;bosfive@edc.gov&gt;, Clerk of the Board &lt;edc.cob@edcgov.us&gt;, Brian Veerkamp Veerkamp &lt;bosthree@edcgov.us&gt;

To: <bosone@edcgov.us>, <bostwo@edcgov.us>, <bosthree@edcgov.us>, <bosfour@edcgov.us>, <bosfive@edcgov.us>, <edc.cob@edcgov.us>  
Subject: Comment on 12-9-14 BOS Agenda Item #13-0510, Community Region Lines

Dear Board of Supervisors,

I cannot attend the December 9, 2014, meeting and this email comment is to take the place of my personal attendance.

Please direct staff to begin the process to amend the Community Region Lines as stated in Measure O. Measure O proposed to replace the Community Region Lines in Shingle Springs, Pollock Pines, Camino, and Cedar Grove with smaller Rural Region Lines, and reduce the Community Region Line along the Green Valley Road corridor. These are areas that are low density now and do not want to be a target for high-density development. This is the Board's opportunity to clear up the \$1,000,000 of misleading information that developers spent to defeat Measure O in the November election.

Thank you,

Joey Ames  
Shingle Springs



EDC COB &lt;edc.cob@edcgov.us&gt;

---

**Comment on 12-9-14 BOS Agenda Item #13-0510, Community Region Lines**1 message

---

**Monique Wilber** <monique.w@comcast.net>

Mon, Dec 8, 2014 at 8:58 PM

To: bosone@edcgov.us, bostwo@edcgov.us, bosthree@edcgov.us, bosfour@edcgov.us, bosfive@edcgov.us, edc.cob@edcgov.us

Dear Board of Supervisors,

I cannot attend the December 9, 2014, meeting and this email comment is to take the place of my personal attendance.

Please direct staff to begin the process to amend the Community Region Lines as stated in Measure O. Measure O proposed to replace the Community Region Lines in Shingle Springs, Pollock Pines, Camino, and Cedar Grove with smaller Rural Region Lines, and reduce the Community Region Line along the Green Valley Road corridor. These are areas that are low density now and do not want to be a target for high-density development.

This is the Board's opportunity to clear up the \$1,000,000 of misleading information that developers spent to defeat Measure O in the November election.

Thank you,

Monique Wilber  
Shingle Springs



## LATE DISTRIBUTION

DATE 12-9-14 #27

EDC COB <edc.cob@edcgov.us>

---

### Comment on 12-9-14 BOS Agenda Item #13-0510, Community Region Lines

1 message

Mike <mikemue2@comcast.net>

Tue, Dec 9, 2014 at 10:03 AM

To: "Briggs, Ron" <bosfour@edcgov.us>, "Mikulaco, Supervisor" <bosone@edcgov.us>, "Nutting, Ray" <bostwo@edcgov.us>, "Veerkamp, Brian" <bosthree@edcgov.us>, bosfive@edcgov.us, "COB, EDC" <edc.cob@edcgov.us>

Dear Board of Supervisors,

I cannot attend the December 9, 2014, meeting and this email comment is to take the place of my personal attendance.

Please direct staff to begin the process to amend the Community Region Lines as stated in Measure O. Measure O proposed to replace the Community Region Lines in Shingle Springs, Pollock Pines, Camino, and Cedar Grove with smaller Rural Region Lines, and reduce the Community Region Line along the Green Valley Road corridor. These are areas that are low density now and do not want to be a target for high-density development. This is the Board's opportunity to clear up the \$1,000,000 of misleading information that developers spent to defeat Measure O in the November election.

In addition, I do not support your raise.

Sincerely,



*Michael Mueller, RCDD*

*This electronic mail (including any attachments) may contain information that is privileged, confidential, and/or otherwise protected from disclosure to anyone other than its intended recipient(s). Any dissemination or use of this electronic email or its contents (including any attachments) by persons other than the intended recipient(s) is strictly prohibited. If you have received this message in error, please notify us immediately by reply email so that we may correct our internal records. Please then delete the original message (including any attachments) in its entirety. This includes any government/s and any and all contractors or their agents.*





EDC COB <edc.cob@edcgov.us>

---

**RE: CORRECTION - Action Alert! Community Regions on 12-9-14 Board of Supervisors agenda**

1 message

---

**John and Carolyn O'Connor** <nspctrjn@hotmail.com>

Tue, Dec 9, 2014 at 10:12 AM

To: "bosone@edcgov.us" <bosone@edcgov.us>, BOS-Norma Santiago <bostwo@edcgov.us>, "bostthree@edcgov.us" <bostthree@edcgov.us>, "bosfour@edcgov.us" <bosfour@edcgov.us>, "bosfive@edcgov.us" <bosfive@edcgov.us>, "edc.cob@edcgov.us" <edc.cob@edcgov.us>

**Subject: Comment on 12-9-14 BOS Agenda Item #13-0510, Community Region Lines**

Dear Board of Supervisors,

We are unable to attend the December 9, 2014, meeting and this email comment is to take the place of our personal attendance.

The process of amending the Community Region Lines as stated in Measure O should start immediately. This measure proposed to replace the Community Region Lines in Shingle Springs, Pollock Pines, Camino, and Cedar Grove with smaller Rural Region Lines, and reduce the Community Region Line along the Green Valley Road corridor. These are low density areas that do not want to be transformed into high-density development.

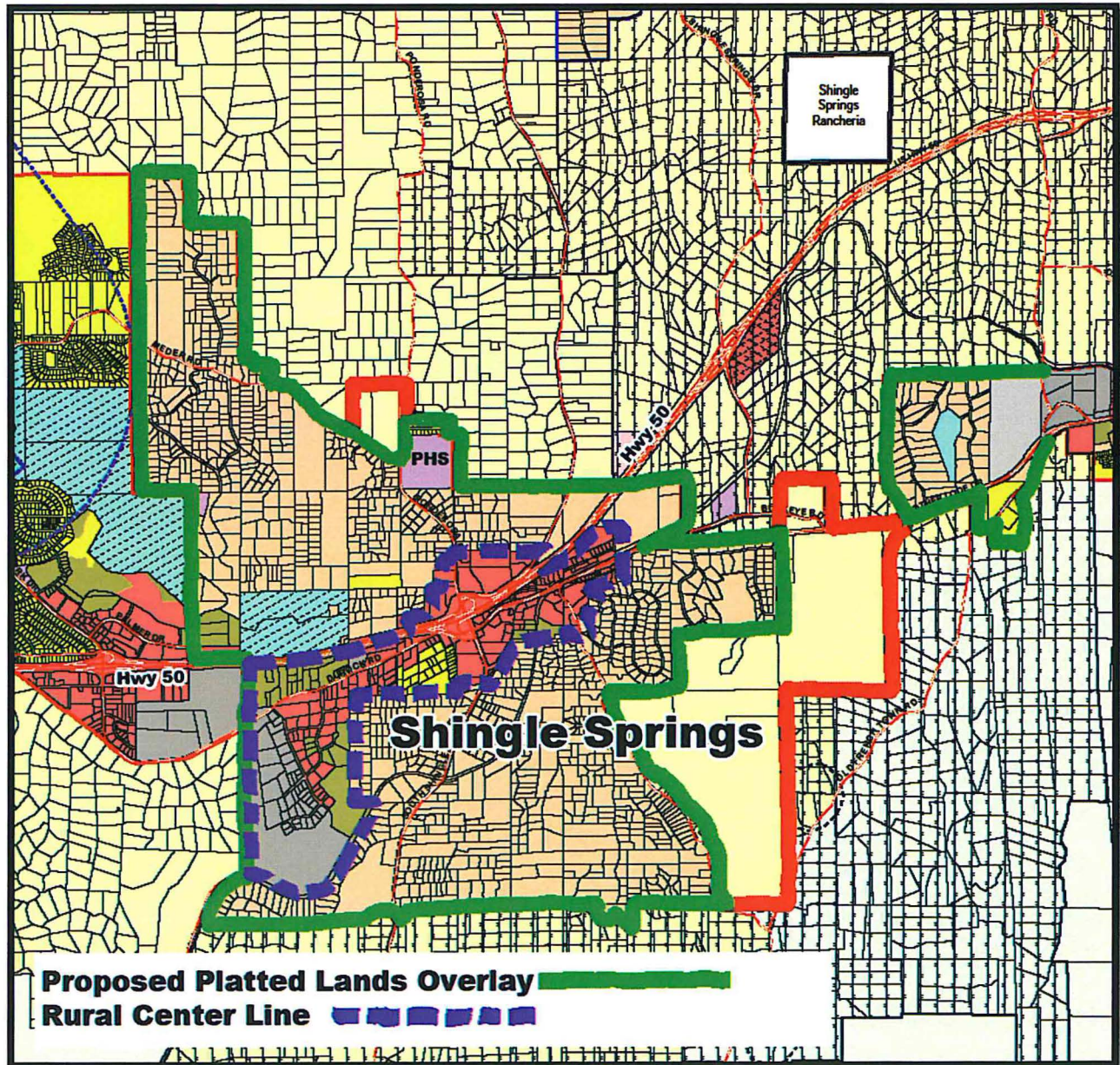
Respectfully,

John and Carolyn O'Connor  
Georgetown



**Proposed Amendments to Shingle Springs Community Region Line**

1. This map was presented at a community-wide meeting on November 21, 2013 in Shingle Springs. The community participants voted to accept this map and move forward with collecting thousands of signatures to put this map on the November 2014 ballot.
2. Consistent with Land Use designation in the General Plan and LUPPU
3. Does not require any Land Use changes
4. Does not affect Housing Element
5. Based on suggestion in Roger Trout's White Paper on Community Region Lines





So here we are. The Shingle Springs community has been a driving force in keeping this issue alive because it is important to our future and how we want to grow as a community.

The Staff Memo had 4 questions in it. Here are our answers:

1. Identify objective for amending Community Region boundary lines.

Community Region Lines should be amended based on community requests. We have been repeatedly told at CEDAC and Board meetings that strong communities lead to economic development. Let's focus our county resources on community-oriented projects.

2. Identify specific Community Region boundary lines amendments to analyze.

The Shingle Springs Community has consistently asked for their Community Region Line to be removed and replaced with a Rural Center, as suggested in Roger Trout's White Paper on Community Region Lines. Please amend the Shingle Springs Community Region boundary line.

3. Identify how the project shall be processed.

It may be best to amend Community Region boundary lines outside of the Community Plan process because that process is not yet in place and some communities may not create a plan. However, we would like staff to use the most direct path to amending the Community Region boundary lines.

4. Determine project priority and identify necessary resources to accomplish project objectives and prioritization.

We've asked all along for the Community Region Line amendments to progress parallel with existing projects like LUPPU and the Sign Ordinance. We would like for you to do whatever it takes to get the boundaries amended for the community.

2 of 4



Give to Clerk

12-9-14 BOS comment, Community Region boundary line

The Shingle Springs community cherishes its rural residential character. This was clearly stated in the 1977 Shingle Springs Area Plan and is still true today.

The Community Region Lines were drawn and included in the 1996 General Plan, and then again in the 2004 General Plan. Many residents that supported the General Plan did NOT understand that a Community Region was intended for high-density development and would not have supported the Plan if that had been clear.

Shingle Springs' current existing pattern of growth and land use designations are an example of good planning practices, meaning a commercial and high-density residential core that transitions out into medium and then lower density uses. This good land use pattern makes Shingle Springs a highly desirable place to live in El Dorado County, just as it was when the 1977 Area Plan was created by its residents.

We have been here at Board meetings several times over the past couple of years asking you to amend Shingle Springs' Community Region Line to preserve our existing pattern of growth. We were told that it was too late to include it in the 2011 General Plan update and that the next update would be our next chance. We observed how long the General Plan update process was with the Camino/Pollock Pines Community Region amendment, so we decided to work with other communities and put Measure O on the ballot. It was a huge undertaking that was fueled by the passion of residents to keep their community rural. It was unfortunate that \$1,000,000 was spent to confuse voters and defeat Measure O.

3 of 4



So here we are. The Shingle Springs community has been a driving force in keeping this issue alive because it is important to our future and how we want to grow as a community.

The Staff Memo had 4 questions in it. Here are our answers:

1. Identify objective for amending Community Region boundary lines.

Community Region Lines should be amended based on community requests. We have been repeatedly told at CEDAC and Board meetings that strong communities lead to economic development. Let's focus our county resources on community-oriented projects.

2. Identify specific Community Region boundary lines amendments to analyze.

The Shingle Springs Community has consistently asked for their Community Region Line to be removed and replaced with a Rural Center, as suggested in Roger Trout's White Paper on Community Region Lines. Please amend the Shingle Springs Community Region boundary line.

3. Identify how the project shall be processed.

It may be best to amend Community Region boundary lines outside of the Community Plan process because that process is not yet in place and some communities may not create a plan. However, we would like staff to use the most direct path to amending the Community Region boundary lines.

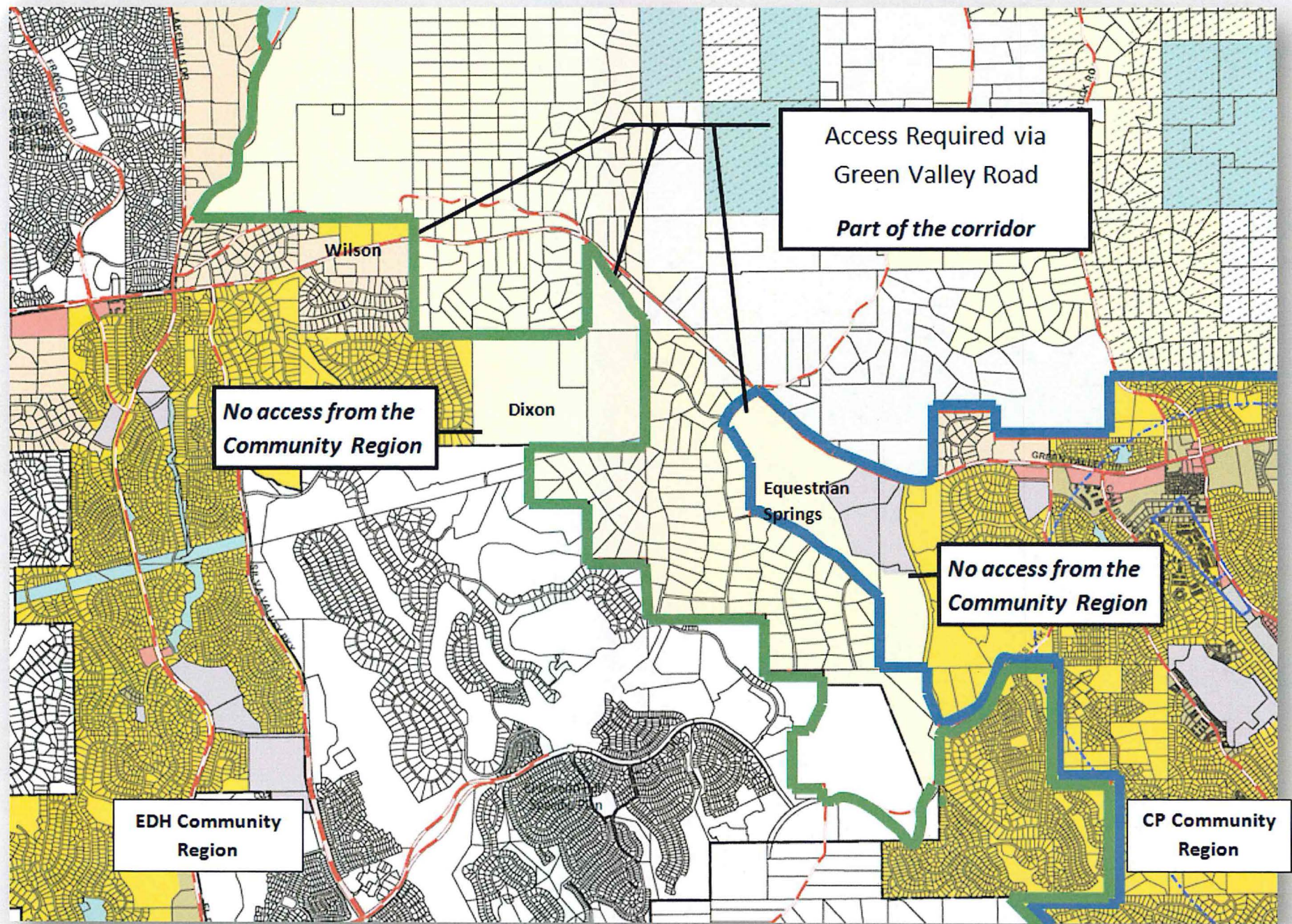
4. Determine project priority and identify necessary resources to accomplish project objectives and prioritization.

We've asked all along for the Community Region Line amendments to progress parallel with existing projects like LUPPU and the Sign Ordinance. We would like for you to do whatever it takes to get the boundaries amended for the community.



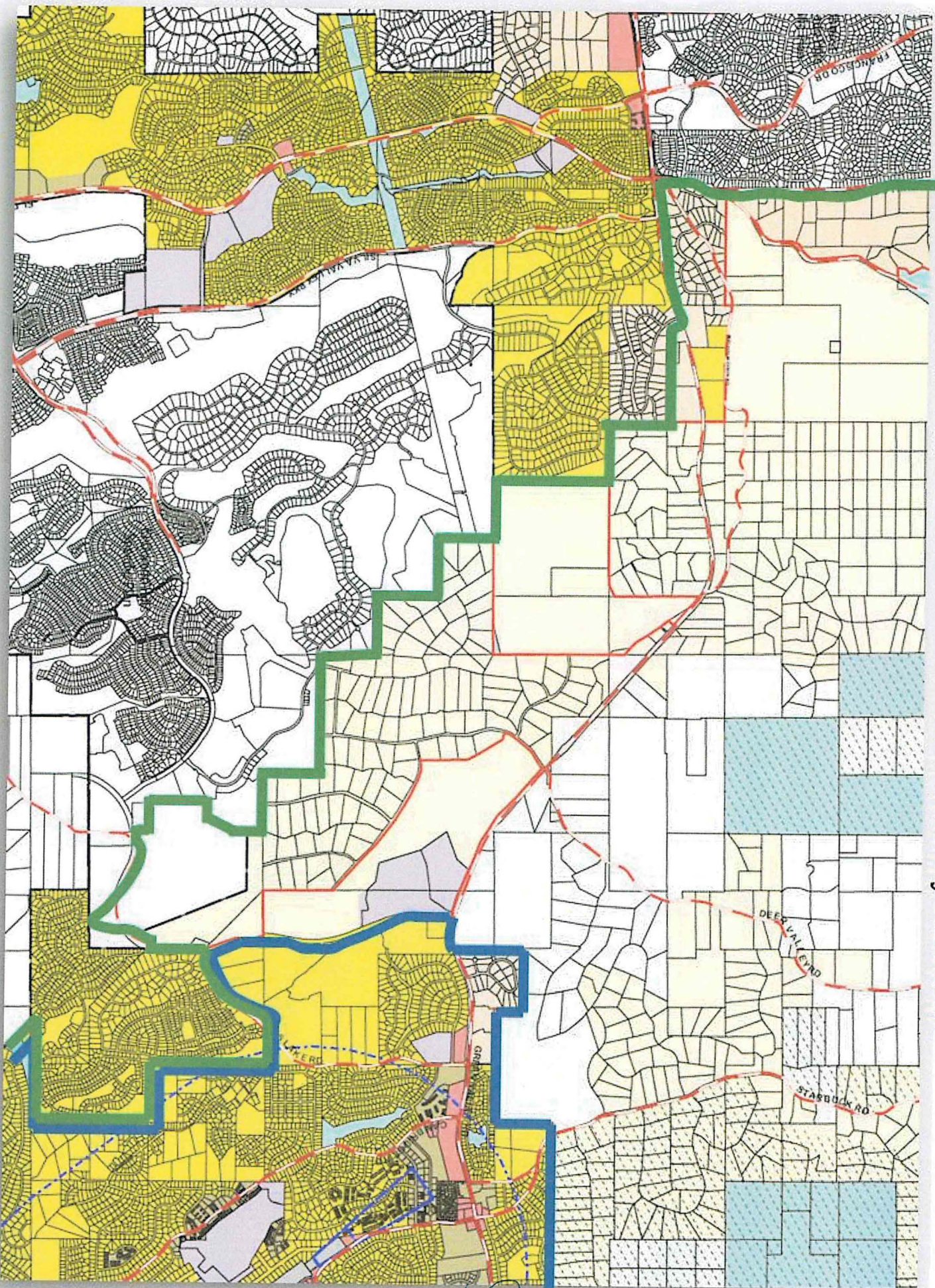
E. Van Dyke # 27 BOS 12/9/14

## Existing Community Region Boundaries - Green Valley Road Corridor





# Proposed Community Region Boundaries - Green Valley Corridor





**Voter Data from November 2014 Election**  
**Precincts closest to Shingle Springs**

Consolidated Precinct	Place	Total Counted	Total Votes	Yes	No	% Yes	% No
200020.01	Shepherd of the Hills Church	671	657	382	275	58.14%	41.86%
200021.01	American Legion Post 119	782	761	565	196	74.24%	25.76%
200006.59	Millers Hill School	751	723	291	432	40.25%	59.75%
200016.52	Millers Hill School	422	408	225	183	55.15%	44.85%
400002.17	Rescue Community Center	935	913	395	518	43.26%	56.74%
400017.10	Park Community Church	863	847	456	391	53.84%	46.16%
		4424	4309	2314	1995	53.70%	46.30%

\$1,000,000 was spent to spread misinformation to confuse voters and caused them fear when voting. Despite this, the voters in and surrounding Shingle Springs were able to sort through the barrage of misinformation and supported Measure O. They understand that removing the urban line around Shingle Springs will help protect the rural residential quality of life that they embrace. Please direct staff to move forward with creating strong communities and amend the Shingle Springs Community Region Line.

1061