

General Plan Determination of Conformity – Land Exchange

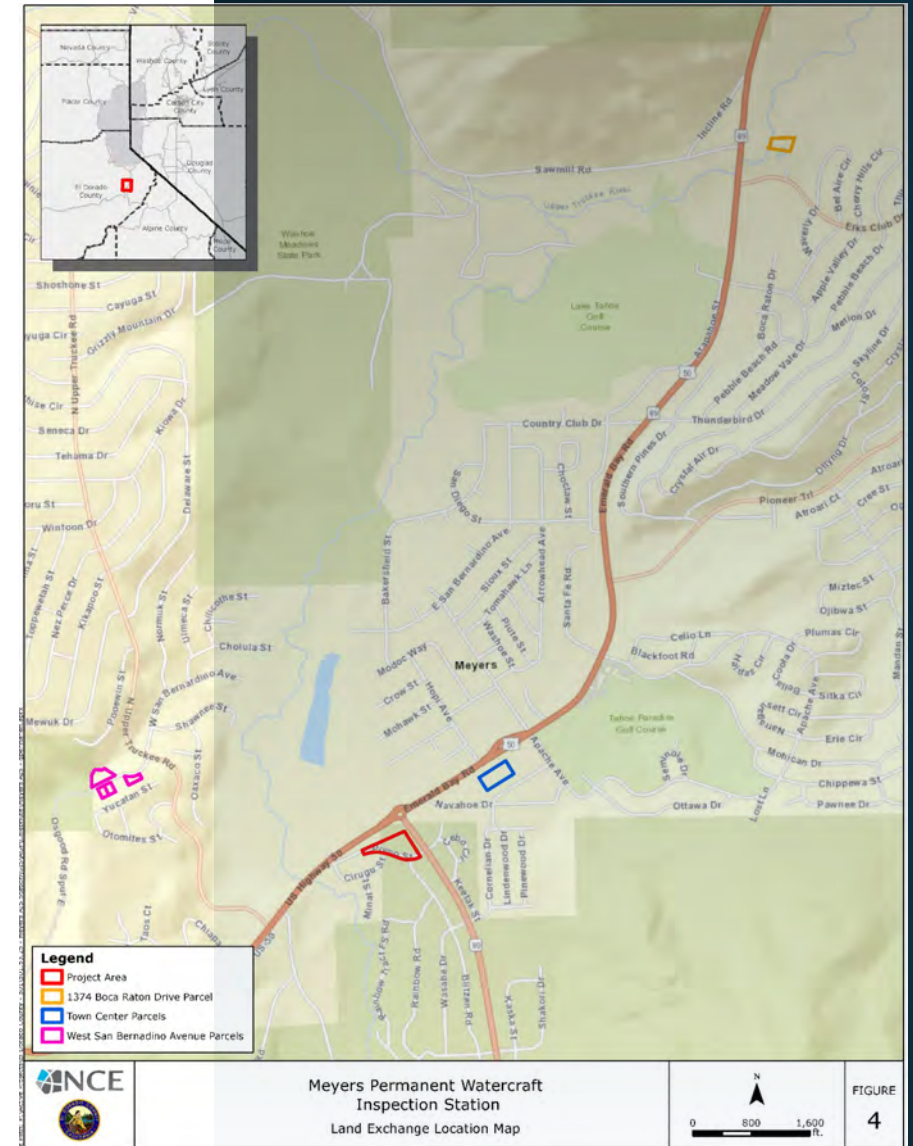
Planning Commission

May 28, 2026



Background – Land Exchange

- Parties
 - California Tahoe Conservancy
 - El Dorado County
- Purpose
 - Facilitate the Meyers watercraft inspection station
 - Preserve open space/sensitive land for management efficiencies
 - Provide developable, non-sensitive land to the County within the Meyers Town Center



County & Tahoe Conservancy Land Exchange

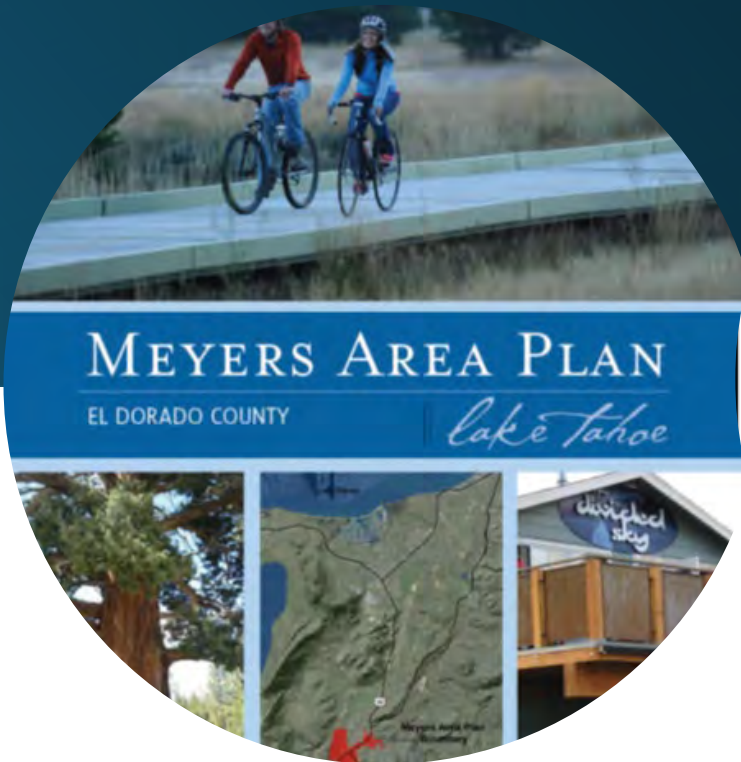
Current County-owned parcels

- Five parcels – APNs 034-623-002, 034-623-003, 034-623-006, 034-622-007, and 033-191-006
- Consists of about 3.28 acres
- Sensitive/open space parcels
- Located in the unincorporated community of Meyers

Current Conservancy-owned parcels

- Six parcels – APNs 034-300-025, 034-300-026, 034-300-27, 034-300-028, 034-331-015, and 034-331-023
- Consists of about 4.44 acres
- Asset Lands and developable
- Located in the unincorporated community of Meyers in the Town Center

General Plan Conformity



**2004 EL DORADO COUNTY GENERAL PLAN
A PLAN FOR MANAGED GROWTH AND OPEN
ROADS; A PLAN FOR QUALITY
NEIGHBORHOODS AND TRAFFIC RELIEF**



Staff Recommendation

Staff recommends the Planning Commission determine that the land exchange is in conformity with the El Dorado County General Plan, pursuant to Government Code Section 65402