



RESOLUTION NO. 177-2013

OF THE BOARD OF SUPERVISORS OF THE COUNTY OF EL DORADO

**WHEREAS**, the County of El Dorado is mandated by the State of California to maintain an adequate and proper General Plan; and

**WHEREAS**, because of that mandate El Dorado County's General Plan and the various elements thereof must be continually updated with current data, recommendations, and policies; and

**WHEREAS**, the Community Development Agency, Development Services Division, and the Planning Commission have made recommendations to the Board of Supervisors regarding potential amendments of the Land Use Element of the General Plan; and

**WHEREAS**, the Board of Supervisors has reviewed and held public hearings on the recommended amendments to the land use element; and

**WHEREAS**, the Board of Supervisors finds that the proposed amendments to the General Plan are consistent with all elements of the General Plan not otherwise amended.

**NOW, THEREFORE, BE IT RESOLVED** that the County of El Dorado Board of Supervisors hereby approves and accepts the environmental documents on the following amendments to the General Plan, and approves and adopts the following amendments to the General Plan based on the findings and reasons set forth in the staff reports and Planning Commission's actions, except as may be noted herein:

1. LATROBE AREA – High Density Residential (HDR) to Commercial (C), consisting of 1.59 acres, identified by Assessor's Parcel Number 087-121-11 being described as Sections 9 & 10, Township 8 North, Range 9 East, M.D.M., as shown in Exhibit A.

PASSED AND ADOPTED by the Board of Supervisors of the County of El Dorado at a regular meeting of said Board, held the 3 day of December, 2013, by the following vote of said Board:

Attest:

James S. Mitrison

Clerk of the Board of Supervisors

By: \_\_\_\_\_

Deputy Clerk

Ayes: Nutting, Veerkamp, Mikulaco, Briggs

Noes: none

Absent: none

Abstained: Santiago

Chairman, Board of Supervisors

Ron Briggs

POR. SECS. 9 & 10, T.8N., R.9E. M.D.M.  
BLOCKS 1, 2, & 3 TOWNSITE OF LATROBE

87:12

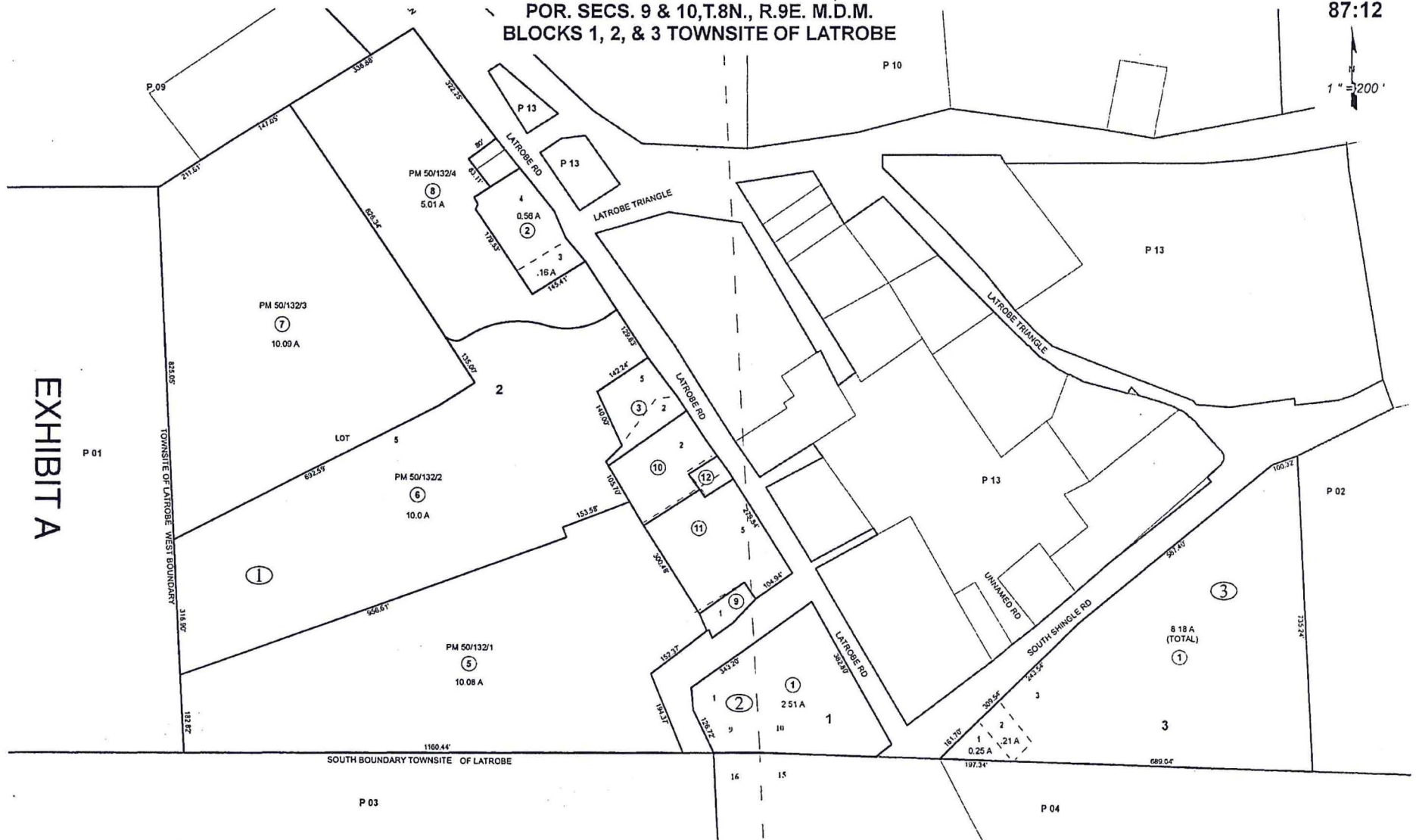
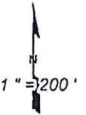


EXHIBIT A

THIS MAP IS NOT A SURVEY. It is prepared by the El Dorado Co. Assessor's office for assessment purposes only. Area calculations and characteristics are not guaranteed. Users should verify items such as dimensions and acreage.

Acreages Are Estimates

Adjacent Map Pages Shown in Grey Text  
Assessor's Block Numbers Shown in Ellipses  
Assessor's Parcel Numbers Shown in Circles

Rev. July 17, 2012

Assessor's Map Bk. 087, Pg. 12  
County of El Dorado, CA