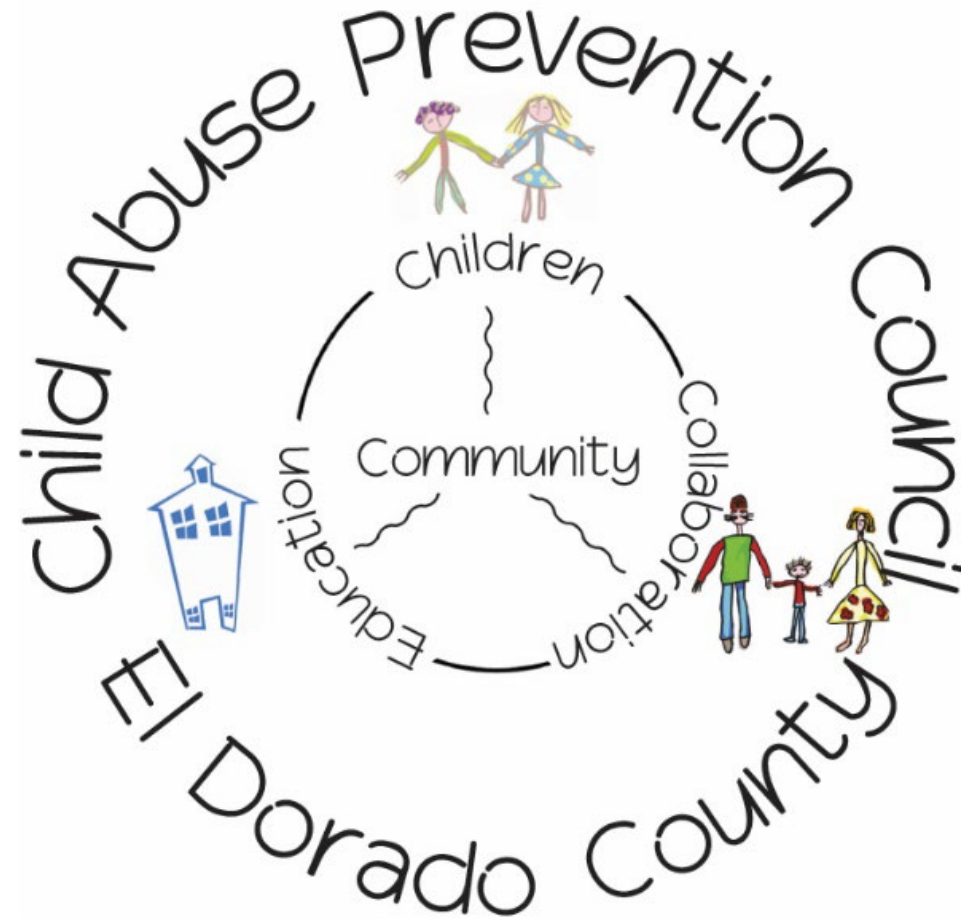


# Board of Supervisors Update

Tuesday, April 12, 2022





# APRIL IS CHILD ABUSE PREVENTION MONTH

Suspect Abuse or Neglect?

**Call 844-756-3699**



Exciting Things going on in El Dorado County!

# Child Abuse Prevention Month At-A-Glance



# Our Goal-Awareness

#cups4kidsEDC  
#pizza4piwheelEDC

Prizes  
&  
Engagement



**PREVENTING  
CHILD  
ABUSE  
IS IN  
OUR  
HANDS**



Leaders  
Leading

—  
We need  
YOU!

---

**Wear**      Lapel Pins during April  
Wear Blue on Fridays  
Tag our pages and  
#preventchildabuseEDC

---

**Support**    The businesses engaging with the CAPC  
on our initiatives


---

**Attend**      4/19 at 9 AM Placerville Police  
Department  
4/22 at 10 AM Diamond Springs Fire  
Department

---

**Share**      Our social media posts and encourage  
others to do the same

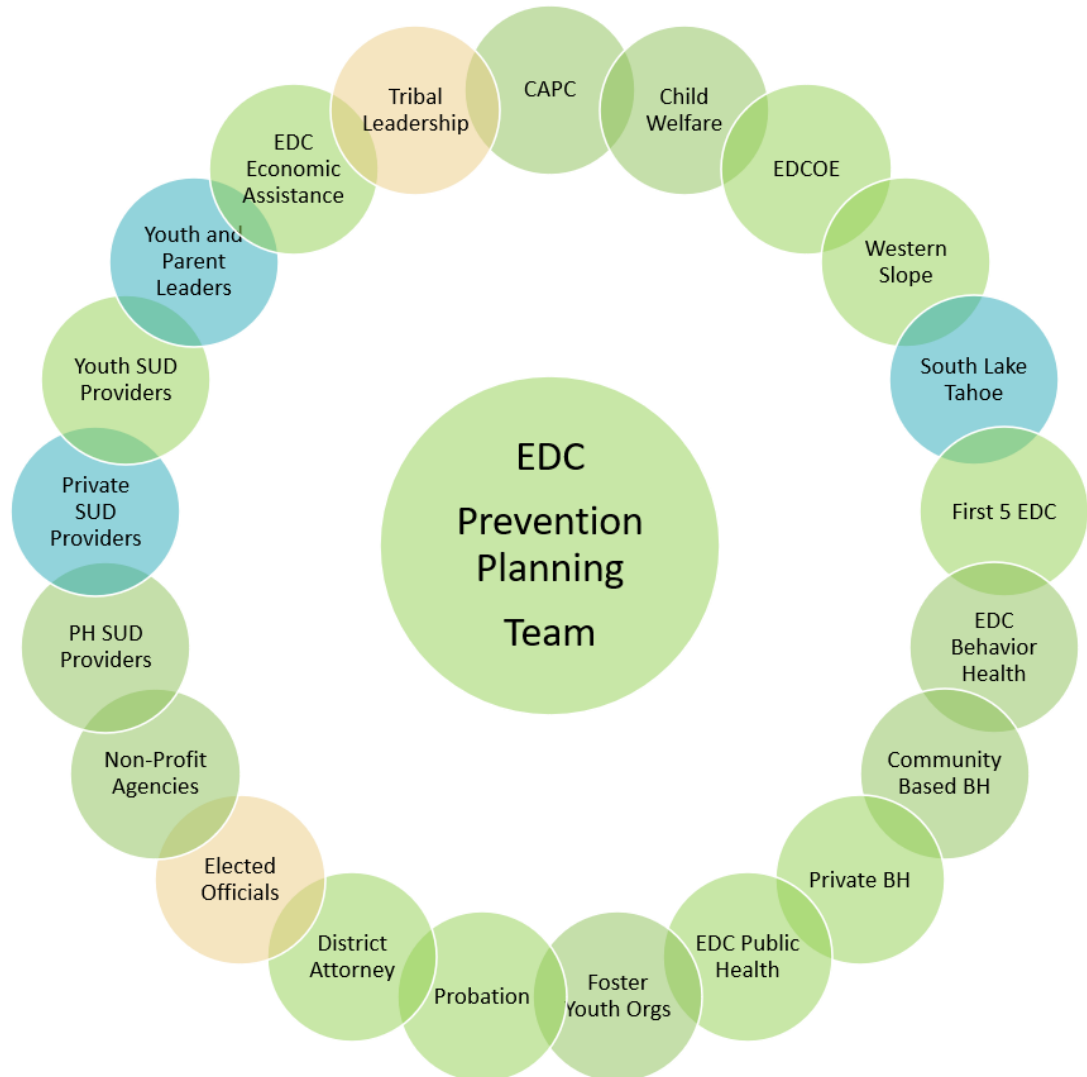
---



# Countywide Child Abuse Prevention Planning Team

# Prevention Planning Team

## Who is present?



# Progress has been made

---

- Reviewed Data
  - County Demographics
  - Disproportionality
  - Child and Family Wellbeing
  - EDC Child Welfare
  - Health
  - Behavior Health
- Presentations by key stakeholders
- Identified Mission and Vision of PPT
- Continually identify and invite more stakeholders





# Identified Primary Drivers of Child Abuse in EDC

## DRIVERS INTO CPS

Data demonstrated **3 Primary** drivers:

- Behavioral Health Issues
- Substance Use Disorders
- Intimate Partner Violence

Participants Brainstormed **Secondary** Drivers:

- ACES and Multi-generational trauma
- Anxiety
- Language Barriers
- Social Isolation
- Lack of access to needed Substance Abuse Services
- Stigma and shame about needs and accepting help
- Lack of trust in the “system”
- Lack of knowledge about the impact of behavior’s on children
- Community norms, context, acceptance of generational family norms
- Economic stressors are an accelerant
- Access to basic needs: housing, safety



# What's Next

Stakeholders Together Will

- Agree to Key Strategies
- Identify Measurable Goals
- Implement Action Plan
- Create Evaluation Plan

# From there

Each Agency/Organization

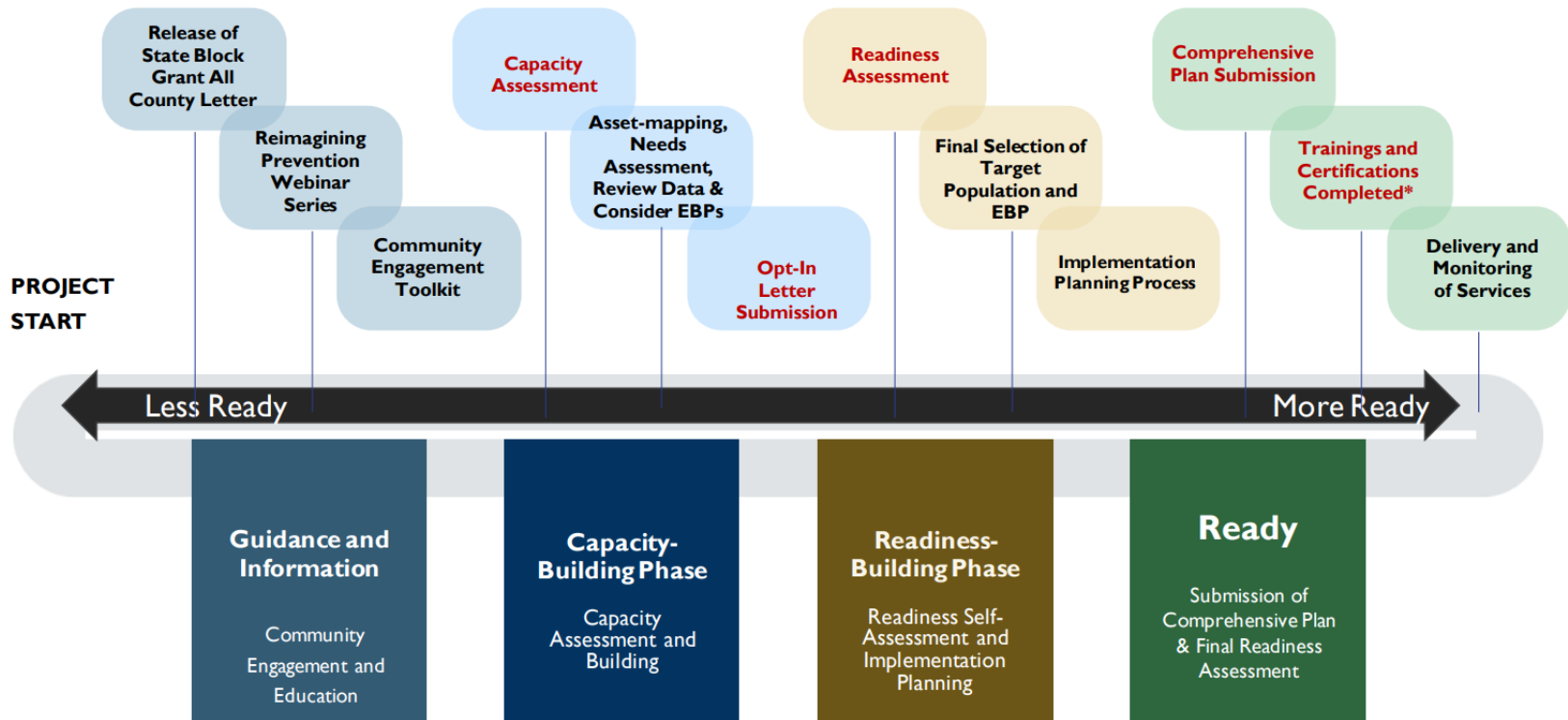
- Will incorporate this Prevention Plan
- Continue to work towards mission

# Comprehensive Prevention Plan

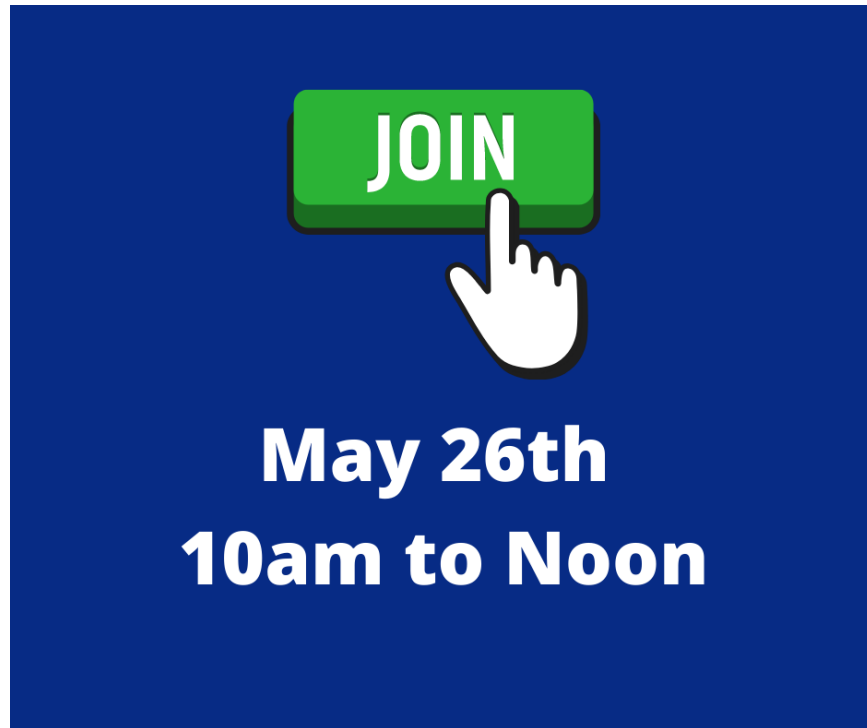
All County Letter No. 22-23  
Page Twenty-One

Roadmap – Attachment C

## ROADMAP FOR COMPREHENSIVE PLANNING & IMPLEMENTATION



# What can you do?



**More information**

- Who should I list?