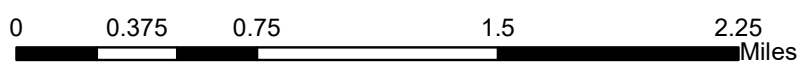
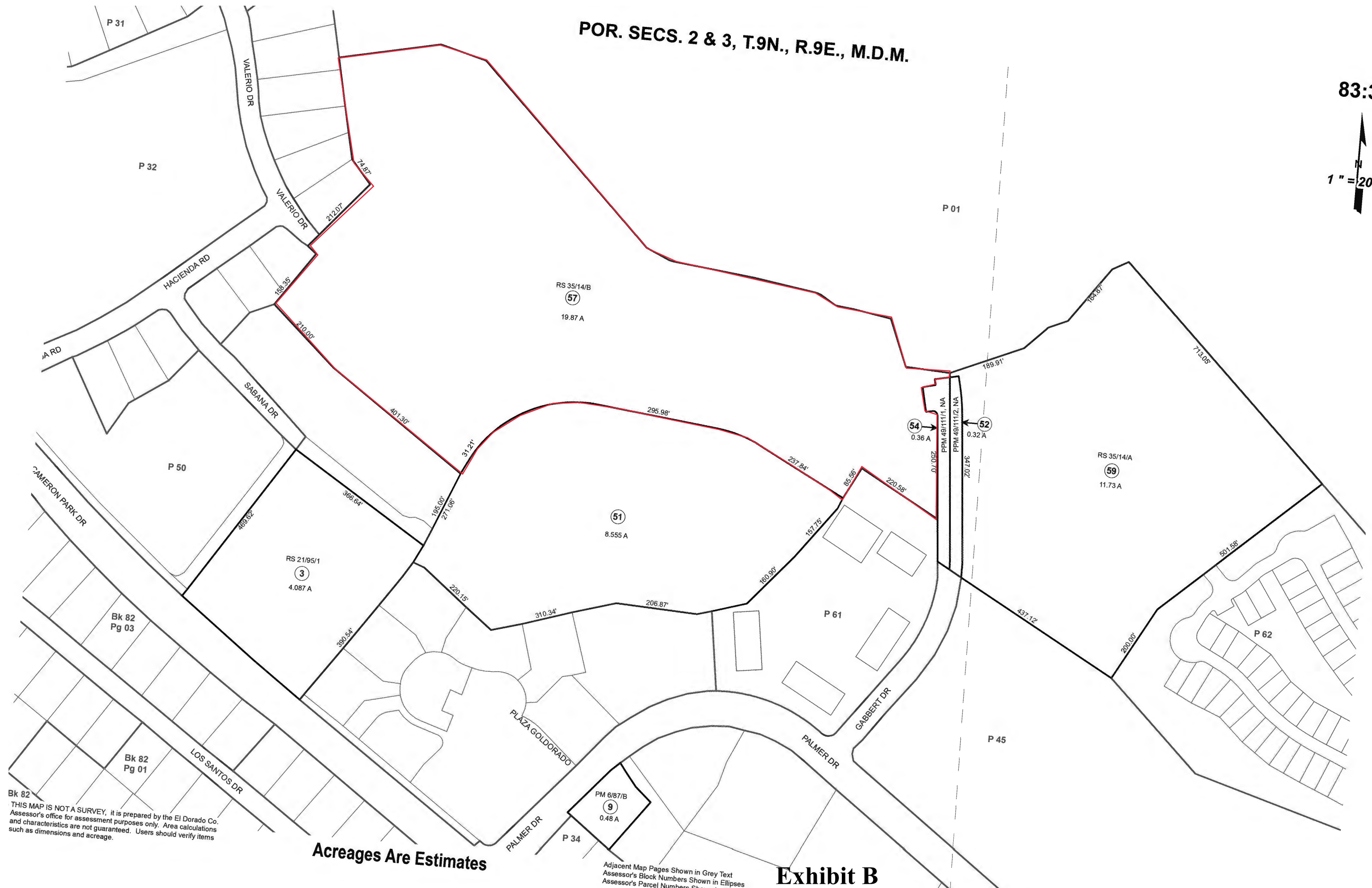
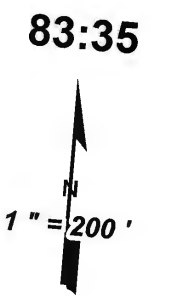


P-E19-0001/Ponte Palmero
Location Map
Exhibit A



POR. SECS. 2 & 3, T.9N., R.9E., M.D.M.



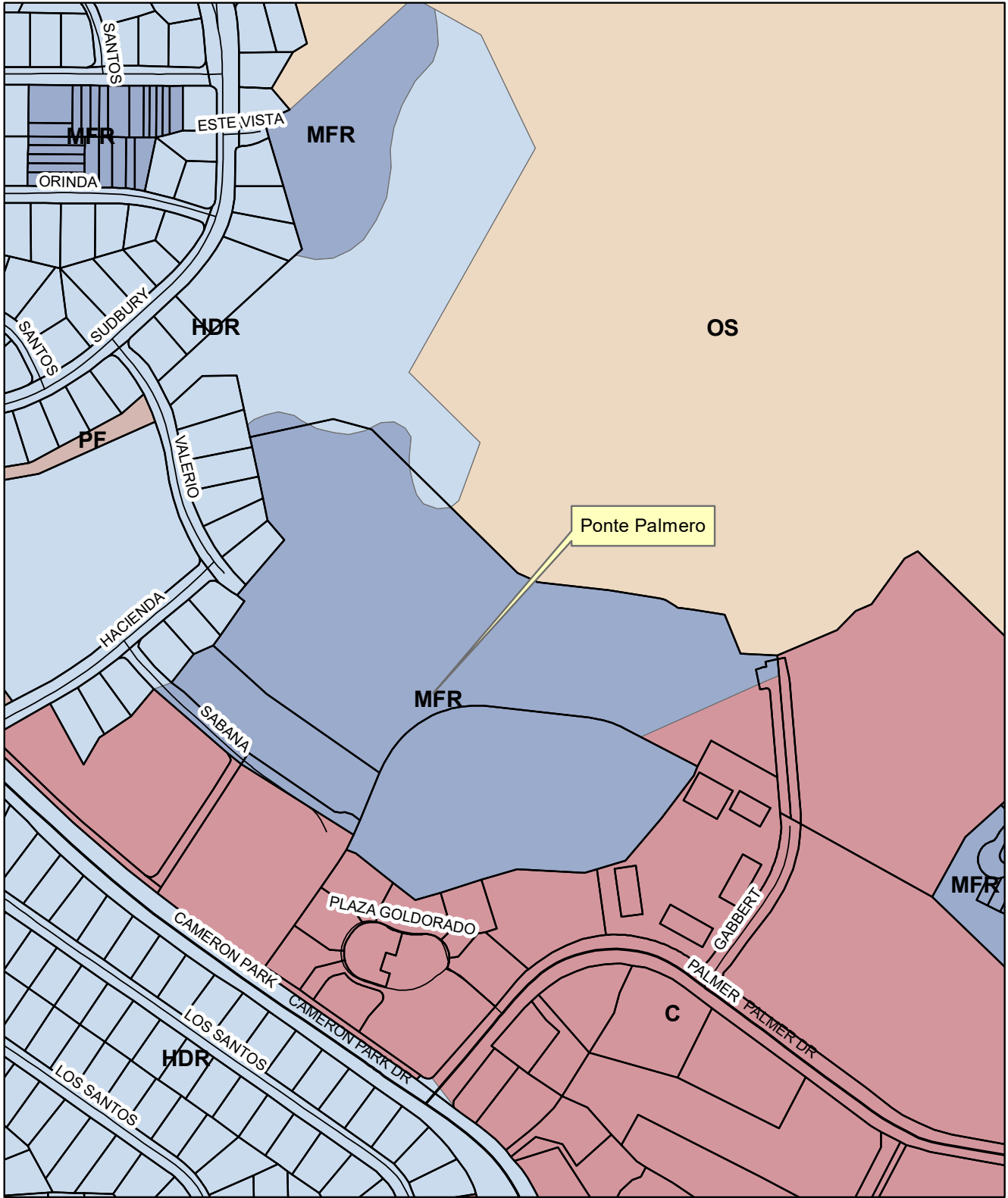
Bk 82
THIS MAP IS NOT A SURVEY, it is prepared by the El Dorado Co. Assessor's office for assessment purposes only. Area calculations and characteristics are not guaranteed. Users should verify items such as dimensions and acreage.

Acreages Are Estimates

Adjacent Map Pages Shown in Grey Text
Assessor's Block Numbers Shown in Ellipses
Assessor's Parcel Numbers Shown in Circles

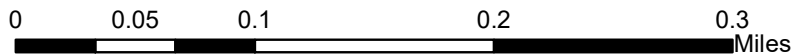
Exhibit B

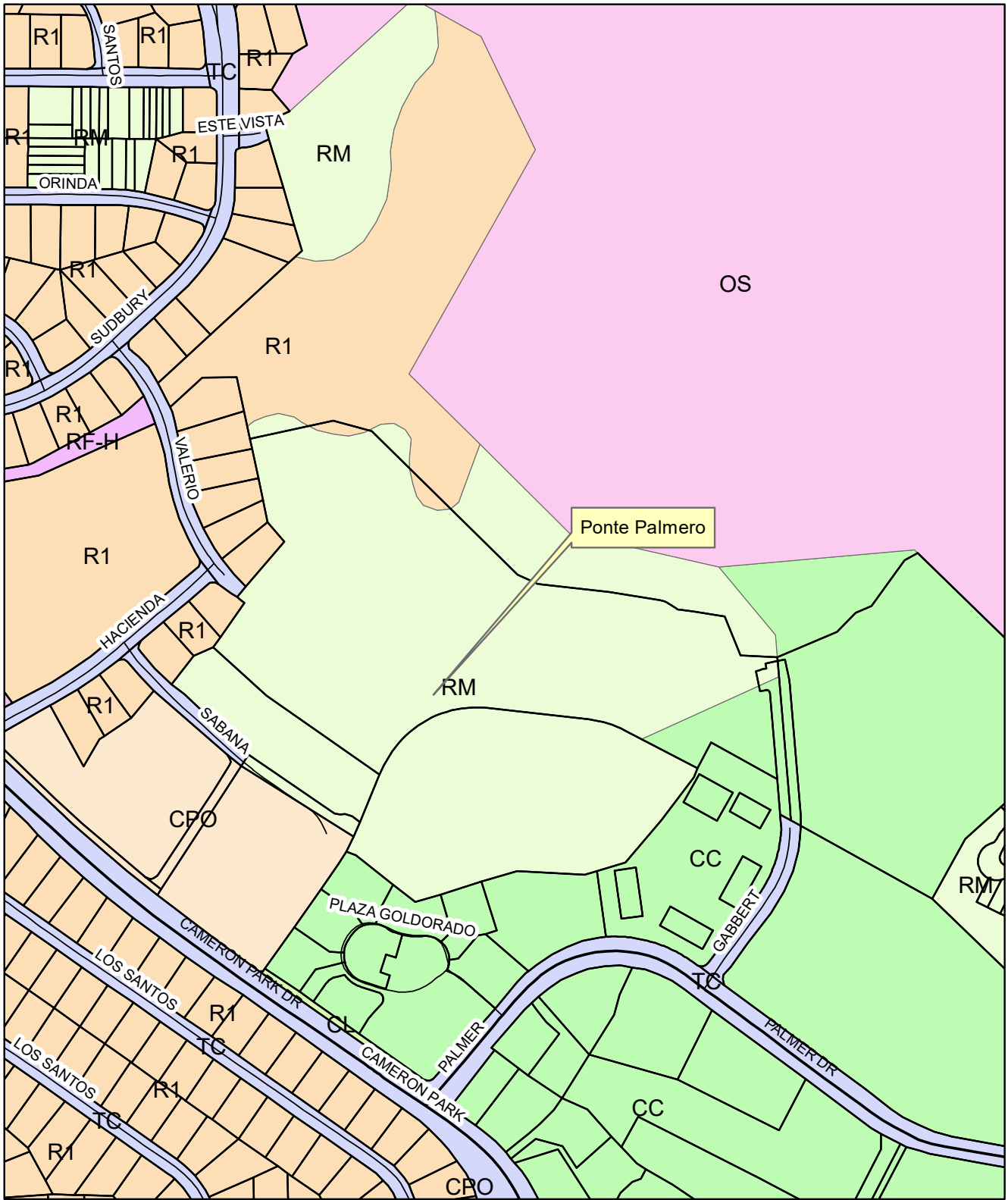
Rev. DEC 31, 2015



P-E19-0001/Ponte Palmero
 General Plan Map
 Exhibit C

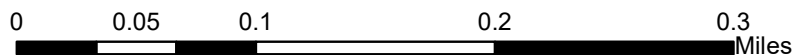
- C
- HDR
- MFR
- OS
- PF





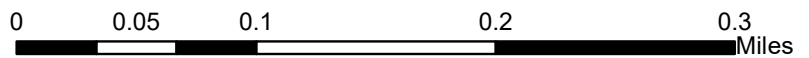
- CC
- CL
- CPO
- OS
- R1
- RF-H
- RM
- TC

P-E19-0001/Ponte Palmero
Zoning Designation Map
Exhibit D





P-E19-0001/Ponte Palmero
Aerial Map
Exhibit E



Ponte Palmero Parcel Map Timeline and Expiration				
Item No.	Type of Action	Application	Dates (From/To)	Total Years
1	Discretionary	Original TM Approval Date	12/12/2017	3
		Original Expiration	12/12/2020	
		<i>EDC code Sec. 120.74.020 and California Government Code 66452.6(a) (Subdivision Map Act)</i>		
		<i>Note:</i>		
Current Request				
5	Discretionary/ Legislative	Time Extension	12/12/2020	2
		Revised Expiration if Approved	12/12/2022	
		<i>Note: Request for six year time extension in accordance with SMA 66452.a.</i>		

Exhibit F

