



COMMUNITY DEVELOPMENT AGENCY
DEVELOPMENT SERVICES DIVISION

<http://www.edcgov.us/DevServices/>

PC 12/11/14
5
(7 pages)

PLACERVILLE OFFICE:
2850 Fairlane Court, Placerville, CA 95667
BUILDING
(530) 621-5315 / (530) 622-1708 Fax
bldgdept@edcgov.us
PLANNING
(530) 621-5355 / (530) 642-0508 Fax
planning@edcgov.us

LAKE TAHOE OFFICE:
3368 Lake Tahoe Blvd., Suite 302
South Lake Tahoe, CA 96150
(530) 573-3330
(530) 542-9082 Fax
tahoebuild@edcgov.us

Distributed at
hearing

TO: Planning Commission
FROM: Aaron D. Mount *AD Mount*
DATE: December 10, 2014
RE: A07-0016, Z07-0049, P06-0006, Noland Parcel Map, CDFW Review Response

Comments were received from the California Department of Fish and Wildlife (CDFW) for the Noland Parcel Map on December 3, 2014. The CDFW expressed concerns with potential wetland/riparian habitats and species of concern on the project site.

The project parcel contains one potential ephemeral stream that touches a corner of the property in an area that proposes no development and a seasonal stream that is located on an adjacent parcel. Neither feature would be directly impacted by the project nor does the project propose any development beyond minor improvements to existing roads. The main species of concern is the Federally listed California red-legged frog (CRLF). The project does not have a Federal nexus, the project parcel is outside of the CRLF designated critical habitat, no direct impacts to water resources are proposed, and all potential building sites are a minimum of 400 feet from any water features.

As detailed in the CEQA Initial Study, impacts to biological resources are less than significant as no direct impacts to sensitive species or resources are proposed. Neither new mitigations nor changes to CEQA significance conclusions are required based on the information provided by the CDFW.

\\DSFS0\DS-Shared\DISCRETIONARY\2006\P06-0006\A07-0016 Z07-0049 P06-0006 PC Memo 12-08-2014.docx



Aaron Mount <aaron.mount@edcgov.us>

Noland

Calderaro, Angela@Wildlife <Angela.Calderaro@wildlife.ca.gov>
To: "Aaron Mount (aaron.mount@edcgov.us)" <aaron.mount@edcgov.us>
Cc: Wildlife R2 CEQA <R2CEQA@wildlife.ca.gov>

Wed, Dec 3, 2014 at 11:02 AM

Hi Aaron,

I'm reviewing the request the comments on the "GP Amendment/Rezone/PM A07-0015/Z07-0049/P06-0006 Noland PM." The initial study indicates that impacts to biological resources are all less than significant. The Department has the following comments.

Question A states that the project is not located within critical habitat for CRLF. This does not mean that CRLF cannot be present. When a species is proposed for listing as endangered or threatened under the Endangered Species Act, the Service must consider whether there are areas of habitat believed to be essential to the species' conservation. Those areas may be proposed for designation as "critical habitat." This does not mean that the species does not occur in other areas. Please revise the Initial Study.

The EIR for the General Plan is a programmatic document and does not provide the level of detail necessary to determine project-specific impacts. I attached the BIOS map and the CNDDDB rarefind 9-quad search of special-status species records. Several special-status species may occur in the area. The Department recommends that a Biological Resources Assessment is prepared to document the resources that may be present on the project site and to analyze the potential impacts from the project to biological resources. Mitigation measures should be developed to avoid, minimize or mitigate potential impacts to sensitive resources.

Question B/C states that there are no known wetland/riparian areas on the project site. If you look at the attached JPEG, it shows a stream corridor running through the eastern tip of the parcel. I would suggest that a biologist visit the site to determine the extent of wetlands and riparian habitat on the property.

Please let me know if you have any questions or if you would like me to review the biological reports.

Thanks,

Angela Calderaro

Senior Environmental Scientist (Specialist)

Regional Mitigation Bank Coordinator

Habitat Conservation Branch

California Department of Fish and Wildlife, North Central Region

1701 Nimbus Road, Rancho Cordova CA 95670

12/8/2014

Edcgov.us Mail - Noland

Office: 916-358-2920

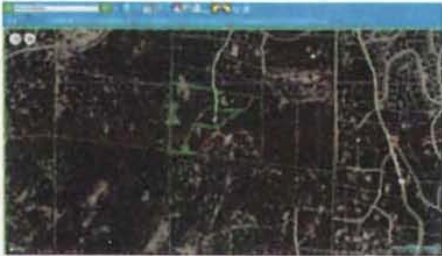
Fax: 916-358-2912

Angela.Calderaro@wildlife.ca.gov


www.wildlife.ca.gov

To report a violation please call 1-888-DFG-Caltip.

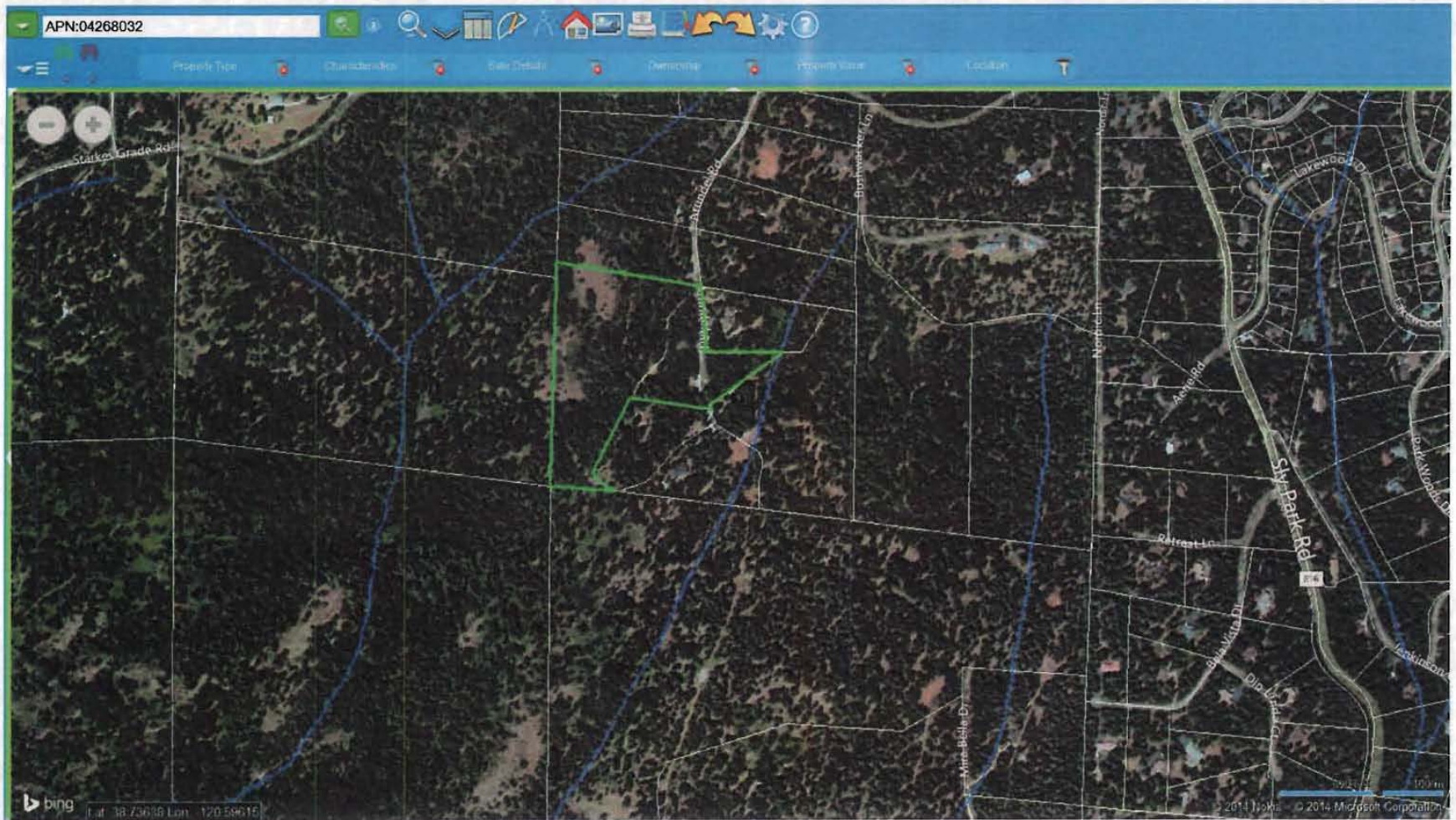
3 attachments



Capture.JPG
446K

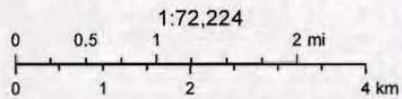
 **BIOS-map.pdf**
1307K

 **RAREFIND.pdf**
8K

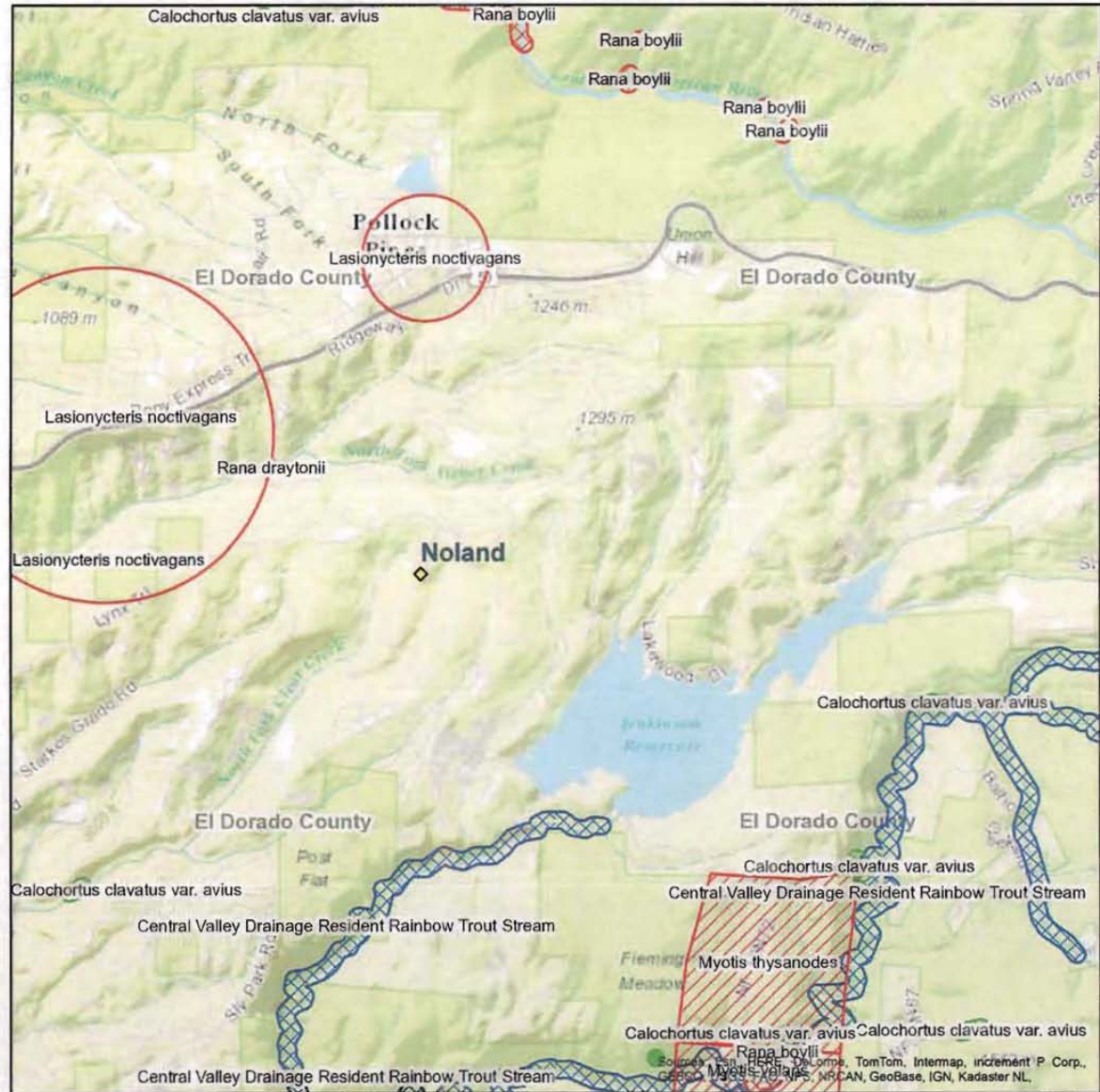


Noland

- Plant (80m)
- Plant (specific)
- Plant (non-specific)
- Plant (circular)
- Animal (80m)
- Animal (specific)
- Animal (non-specific)
- Animal (circular)
- Terrestrial Comm. (80m)
- Terrestrial Comm. (specific)
- Terrestrial Comm. (non-specific)
- Terrestrial Comm. (circular)
- Aquatic Comm. (80m)
- Aquatic Comm. (specific)
- Aquatic Comm. (non-specific)
- Aquatic Comm. (circular)
- Multiple (80m)
- Multiple (specific)
- Multiple (non-specific)
- Multiple (circular)



December 3, 2014



Author: scaldararo
 Printed from <http://bios.dfg.ca.gov>

California Department of Fish and Game
Natural Diversity Database
Selected Elements by Scientific Name - Landscape
Noland - Request for comments

Scientific Name	Common Name	Element Code	Federal Status	State Status	Global Rank	State Rank	CNPS	CDFG
1 <i>Accipiter gentilis</i>	northern goshawk	ABNKC12060			G5	S3		SC
2 <i>Arctostaphylos nissenana</i>	Nissenan manzanita	PDERI040V0			G1	S1	1B.2	
3 <i>Calochortus clavatus var. avius</i>	Pleasant Valley mariposa-lily	PMLIL0D095			G4T2	S2	1B.2	
4 <i>Central Valley Drainage Hardhead/Squawfish Stream</i>	Central Valley Drainage Hardhead/Squawfish Stream	CARA2443CA			GNR	SNR		
5 <i>Central Valley Drainage Resident Rainbow Trout Stream</i>	Central Valley Drainage Resident Rainbow Trout Stream	CARA2421CA			GNR	SNR		
6 <i>Central Valley Drainage Spring Stream</i>	Central Valley Drainage Spring Stream	CARA2413CA			GNR	SNR		
7 <i>Chlorogalum grandiflorum</i>	Red Hills soaproot	PMLIL0G020			G3	S3	1B.2	
8 <i>Clarkia biloba ssp. brandegeae</i>	Brandegee's clarkia	PDONA05053			G4G5T4	S4	4.2	
9 <i>Cosumnoperla hypocrenea</i>	Cosumnes stripetail	IIPLE23020			G2	S2		
10 <i>Emys marmorata</i>	western pond turtle	ARAAD02030			G3G4	S3		SC
11 <i>Horkelia parryi</i>	Parry's horkelia	PDROS0W0C0			G2	S2	1B.2	
12 <i>Lasionycteris noctivagans</i>	silver-haired bat	AMACC02010			G5	S3S4		
13 <i>Lasiurus cinereus</i>	hoary bat	AMACC05030			G5	S4?		
14 <i>Lewisia serrata</i>	saw-toothed lewisia	PDPOR040E0			G2	S2	1B.1	
15 <i>Monadenia mormonum buttoni</i>	Button's Sierra sideband	IMGASC7071			G2T1	S1		
16 <i>Myotis thysanodes</i>	fringed myotis	AMACC01090			G4	S4		
17 <i>Myotis volans</i>	long-legged myotis	AMACC01110			G5	S4?		
18 <i>Myotis yumanensis</i>	Yuma myotis	AMACC01020			G5	S4?		
19 <i>Nebria darlingtoni</i>	South Forks ground beetle	IICOL6L100			G1	S1		
20 <i>Orobittacus obscurus</i>	gold rush hanging scorpionfly	IIMEC07010			G1	S1		
21 <i>Pekania pennanti</i>	fisher - West Coast DPS	AMAJF01021	Candidate	Candidate Threatened	G5T2T3Q	S2S3		SC
22 <i>Phacelia stebbinsii</i>	Stebbins' phacelia	PDHYD0C4D0			G3	S3	1B.2	
23 <i>Rana boylei</i>	foothill yellow-legged frog	AAABH01050			G3	S2S3		SC
24 <i>Rana draytonii</i>	California red-legged frog	AAABH01022	Threatened		G2G3	S2S3		SC
25 <i>Rana sierrae</i>	Sierra Nevada yellow-legged frog	AAABH01340	Proposed Endangered	Threatened	G1	S1		SC
26 <i>Rhynchospora capitellata</i>	brownish beaked-rush	PMCP0N080			G5	S1	2B.2	
27 <i>Riparia riparia</i>	bank swallow	ABPAU08010		Threatened	G5	S2S3		
28 <i>Sacramento-San Joaquin Foothill/Valley Ephemeral Stream</i>	Sacramento-San Joaquin Foothill/Valley Ephemeral Stream	CARA2130CA			GNR	SNR		
29 <i>Sphagnum Bog</i>	Sphagnum Bog	CTT51110CA			G3	S1.2		

California Department of Fish and Game
 Natural Diversity Database
 Selected Elements by Scientific Name - Landscape
 Noland - Request for comments

Scientific Name	Common Name	Element Code	Federal Status	State Status	Global Rank	State Rank	CNPS	CDFG
30 <i>Strix nebulosa</i>	great gray owl	ABNSB12040		Endangered	G5	S1		
31 <i>Viola tomentosa</i>	felt-leaved violet	PDVIO04280			G3	S3.2	4.2	
32 <i>Vulpes vulpes necator</i>	Sierra Nevada red fox	AMAJA03012		Threatened	G5T1T2	S1		