



COMMUNITY DEVELOPMENT AGENCY

TRANSPORTATION DIVISION

<http://www.edcgov.us/DOT/>

PLACERVILLE OFFICES:

MAIN OFFICE:
2850 Fairlane Court, Placerville, CA 95667
(530) 621-5900 / (530) 626-0387 Fax

MAINTENANCE:
2441 Headington Road, Placerville, CA 95667
(530) 642-4909 / (530) 642-0508 Fax

LAKE TAHOE OFFICES:

ENGINEERING:
924 B Emerald Bay Road, South Lake Tahoe, CA 96150
(530) 573-7900 / (530) 541-7049 Fax

MAINTENANCE:
1121 Shakori Drive, South Lake Tahoe, CA 96150
(530) 573-3180 / (530) 577-8402 Fax

DATE: August 7, 2015

TO: All Prospective Bidders

SUBJECT: Addendum No. 1
Silva Valley Parkway/Serrano Parkway Traffic Circulation Improvement Project, Contract No. 15-31095, CIP No. 72141

Submit proposals for this work with the understanding and full consideration of this addendum. The revisions declared in this addendum are essential parts of the Contract.

ITEM NO.	LOCATION, PAGE, OR DRAWING NO.	DESCRIPTION OF CHANGE
1.01	8-1.04B Special Provisions	<p>Bidders' are instructed to update Section 8-1.04B of the Special Provisions as follows:</p> <p style="padding-left: 40px;">Add "within" after "Proceed" to the 2nd paragraph of Section 8-1.04B.</p> <p style="padding-left: 40px;">Delete the 4th paragraph of Section 8-1.04B of the Special Provisions.</p> <p style="padding-left: 40px;">Add to Section 8-1.04B of the Special Provisions:</p> <p style="padding-left: 40px;">Submit a notice 72 hours before starting job site activities. If the project has more than 1 location of work, submit a separate notice for each location.</p> <p style="padding-left: 40px;">You may start job site activities before receiving Notice to Proceed if you:</p> <ol style="list-style-type: none"> 1. Deliver the signed Contract, bonds, and evidence of insurance to the Department 2. Submit 72-hour notice

SILVA VALLEY PARKWAY / SERRANO PARKWAY
TRAFFIC CIRCULATION IMPROVEMENT PROJECT
Contract No. PW 15-31095, CIP No. 72141
Addendum No. 1

County of El Dorado
Page 1 of 4

		<p>3. Are authorized by the Department to start</p> <p>4. Perform work at your own risk</p> <p>5. Perform work under the Contract</p> <p>If the Contract is approved, work already performed that complies with the Contract is authorized.</p> <p>If the Contract is not approved, leave the job site in a neat condition. If a facility has been changed, restore it to its former condition or an equivalent condition. The Department does not pay for the restoration.</p> <p>The department does not adjust time for starting before the 1st working day.</p>
1.02	Section 5-1.36D Special Provisions	<p>Bidders' are instructed to replace the contact person for Comcast with the following: Ron Chacon (SEFNCO Communications) (916) 584-6648 Fax (916) 288-9954 8583 Elder Creek Road Sacramento, CA 95828</p>
1.03	C-10 through C-14 Agreement	<p>Bidders' are instructed to replace Agreement pages C-10 through C-14 with the attached C-10 REV through C-14 REV.</p>
1.04	P-3 through P-7 Proposal	<p>Bidders' are instructed to replace Proposal pages P-3 through P-7 with the attached P-3 REV through P-7 REV.</p>
1.05	Plan Sheet L-2	<p>Bidders' are instructed to replace Plan Sheet L-2 with the attached Plan sheet L-2 REV.</p>
1.06	15-2.10B Special Provisions	<p>Bidders' are instructed to add to Section 15-2.10B of the Special Provisions as follows:</p> <p>The existing sanitary sewer manhole to be adjusted to grade is lined on the inside. The existing lining is deteriorating within an estimated 8" to 10" below the lid. As part of Exhibit A Item 17, "Adjust Manhole to Grade (SSMH)", the Contractor must remove the deteriorating liner to competent coating, remove rust and scale, raise manhole to grade, clean and prepare all surfaces and apply epoxy lining in accordance with manufacturer's specifications. The manhole lining material must</p>

		<p>be from the following approved EID materials list:</p> <p>J.A. Crawford Co. - Savereisen-210 (epoxy mortar) Con-Tech California - Hydro-Pox (epoxy) Polymorphic Polymer Corp. - Quantum (polyester mortar) Tnemen Co. Inc. - 120 Vinester (vinylester mortar)</p> <p>The required limits for application of epoxy lining inside the manhole is measured from the bottom of the adjusted lid to 18" below the bottom of adjusted lid or to the limits of the deteriorating lining whichever is greater.</p> <p>Full compensation for all materials, equipment and labor to complete raising manhole to grade, repairing deteriorating lining and applying epoxy lining per the manufacturer's specifications will be included in the Each item of Item No. 17 and no additional compensation will be provided.</p>
--	--	---

Indicate receipt of this addendum by filling in the number of this addendum in the space provided on the signature page of the Proposal.


Holders who have already mailed their Proposal can contact Jennifer Rimoldi at 530-621-7592 (email: Jennifer.Rimoldi@edcgov.us) to arrange return of their Proposal.

Inform all suppliers and subcontractors as necessary.

The Community Development Agency, Transportation Division is only sending this addendum by posting on QuestCDN's website at: <https://www.questcdn.com/>.


If you are not a Contract Documents Holder, but request a set of documents to bid on this project, you must comply with the requirements of this addendum when submitting your bid.

End of Addendum No.1




for Recommended by:
John Kahling, P.E.
Deputy Director, Engineering

B.7.15
Date



Recommended by:
Bard R. Lower
Transportation Division Director

8/7/15
Date



Approved by:
Steven M. Pedretti, Director
Community Development Agency

8/10/15
Date



COUNTY OF EL DORADO
COMMUNITY DEVELOPMENT AGENCY
TRANSPORTATION DIVISION

INTEROFFICE MEMORANDUM

Date: July 29, 2015
To: Bard Lower, Transportation Division Director
From: John Kahling, Deputy Director, Engineering
Subject: Delegation of Authority

I will be out of the office from Thursday, July 30th through Friday, August 7th, 2015.

During my absence, I am delegating my signature authority to Aradhana Kochar, Senior Civil Engineer from July 30th through August 7th.

A handwritten signature in black ink, appearing to be "JK", written over a horizontal line.

John Kahling, Deputy Director, Engineering

A handwritten signature in black ink, appearing to be "AK", written over a horizontal line.

Aradhana Kochar, Senior Civil Engineer

C: Ruth Young, Chief Fiscal Officer
Matt Smeltzer, Deputy Director of Design
Don Spear, Deputy Director of Maintenance
Cierra Garcia, Administrative Technician
Korinne Thomsen, Executive Secretary
Kate Sampson, Assistant Director Admin Finance
Andrew Gaber, Deputy Director Engineering

PROPOSAL PAY ITEMS AND BID PRICE SCHEDULE
SILVA VALLEY PARKWAY / SERRANO PARKWAY TRAFFIC CIRCULATION IMPROVEMENT PROJECT
CONTRACT NO. PW 15-310959 / CIP NO. 72141

BASE BID - SCHEDULE A

ITEM NO.	ITEM CODE	ITEM DESCRIPTION	UNIT OF MEASURE	ESTIMATED QUANTITY	UNIT PRICE (IN FIGURES)	ITEM TOTAL (IN FIGURES)
1	72007	EXCAVATION SAFETY	LS	1		
2	80050	PROGRESS SCHEDULE (CRITICAL PATH METHOD)	LS	1		
3	120090	P CONSTRUCTION AREA SIGNS	LS	1		
4	120100	TRAFFIC CONTROL SYSTEM	LS	1		
5	128650A	PORTABLE CHANGEABLE MESSAGE SIGN	SWD	89		
6	130100	JOB SITE MANAGEMENT	LS	1		
7	130200	PREPARE WATER POLLUTION CONTROL PROGRAM	LS	1		
8	149001A	PREPARE FUGITIVE DUST CONTROL PLAN	LS	1		
9	150714	REMOVE THERMOPLASTIC TRAFFIC STRIPE	LF	1,270		
10	150715	REMOVE THERMOPLASTIC PAVEMENT MARKING	SF	130		
11	150722	REMOVE PAVEMENT MARKER	EA	18		
12	150742	REMOVE ROADSIDE SIGN	EA	1		
13	150763	REMOVE SIGN PANEL	EA	1		
14	151281	SALVAGE ROADSIDE SIGN	EA	1		

ITEM NO.	ITEM CODE	ITEM DESCRIPTION	UNIT OF MEASURE	ESTIMATED QUANTITY	UNIT PRICE (IN FIGURES)	ITEM TOTAL (IN FIGURES)
15	152386	RELOCATE ROADSIDE SIGN-ONE POST	EA	1		
16	152387	RELOCATE ROADSIDE SIGN-TWO POST	EA	1		
17	152440	ADJUST MANHOLE TO GRADE (SSMH)	EA	1		
18	152601	MODIFY DRAINAGE STRUCTURE (SV 15+21, 4'L)	EA	1		
19	153215A	REMOVE CONCRETE (Curb and Gutter)	CY	4		
20	150809A	REMOVE SUBDRAIN (Median)	LF	110		
21	160102	CLEARING AND GRUBBING	LS	1		
22	190101	F ROADWAY EXCAVATION	CY	57		
23	210350	FIBER ROLLS	LF	200		
24	260201	CLASS 2 AGGREGATE BASE	CY	12		
25	377501A	SLURRY SEAL	SY	280		
26	390132	HOT MIX ASPHALT (TYPE A)	TON	105		
27	510502	MINOR CONCRETE (MINOR STRUCTURE)	CY	1		
28	566011	ROADSIDE SIGN - ONE POST	EA	11		
29	568017	INSTALL SIGN PANEL ON EXISTING POST	EA	2		
30	641101A	12" PLASTIC PIPE (HDPE CORRUGATED PIPE -Type S)	LF	12		
31	681132A	SUBDRAIN (Median)	LF	161		

ITEM NO.	ITEM CODE		ITEM DESCRIPTION	UNIT OF MEASURE	ESTIMATED QUANTITY	UNIT PRICE (IN FIGURES)		ITEM TOTAL (IN FIGURES)	
32	731504	F	MINOR CONCRETE (Curb and Gutter)	CY	10				
33	731519		MINOR CONCRETE (Stamped Concrete)	SF	117				
34	750001		MISCELLANEOUS IRON AND STEEL	LB	259				
35	820141		OBJECT MARKER (Type K-1)	EA	2				
36	840501		THERMOPLASTIC TRAFFIC STRIPE	LF	1776				
37	840515		THERMOPLASTIC PAVEMENT MARKING	SF	1090				
38	850101		PAVEMENT MARKER (NON-REFLECTIVE) (Type A)	EA	25				
39	850111		PAVEMENT MARKER (RETROREFLECTIVE)	EA	110				
40	860201	P	SIGNAL AND LIGHTING	LS	1				
41	999990		MOBILIZATION	LS	1				
TOTAL FOR BASE BID - SCHEDULE A									

ADDITIVE ALTERNATIVE BID - SCHEDULE B

ITEM NO.	ITEM CODE		ITEM DESCRIPTION	UNIT OF MEASURE	ESTIMATED QUANTITY	UNIT PRICE (IN FIGURES)		ITEM TOTAL (IN FIGURES)	
42	120090		CONSTRUCTION AREA SIGNS (B)	LS	1				
43	128651A		TRAFFIC CONTROL SYSTEM (B)	LS	1				

ITEM NO.	ITEM CODE		ITEM DESCRIPTION	UNIT OF MEASURE	ESTIMATED QUANTITY	UNIT PRICE (IN FIGURES)		ITEM TOTAL (IN FIGURES)	
44	128650		PORTABLE CHANGEABLE MESSAGE SIGN (B)	SWD	45				
45	130100		JOB SITE MANAGEMENT (B)	LS	1				
46	150685A		REMOVE IRRIGATION FACILITY	LS	1				
47	153215		REMOVE CONCRETE (Curb and Gutter)	CY	7				
48	150809A		REMOVE SUBDRAIN (Median)	LF	210				
49	160102		CLEARING AND GRUBBING	LS	1				
50	190101	F	ROADWAY EXCAVATION	CY	10				
51	206563A		1-1/4" REMOTE CONTROL VALVE (EID)	EA	1				
52	208448A		RISER SPRINKLER ASSEMBLY (recycled water)	EA	22				
53	208594A		3/4" PLASTIC PIPE (Schedule 40) (recycled water)	LF	180				
54	208595A		1" PLASTIC PIPE (Schedule 40) (recycled water)	LF	25				
55	208596A		1-1/4" PLASTIC PIPE (Schedule 40) (recycled water)	LF	5				
56	208599A		2-1/2" PLASTIC PIPE (Schedule 40) (recycled water)	LF	103				
57	260203		CLASS 2 AGGREGATE BASE	CY	73				
58	377501A		SLURRY SEAL	SY	134				

ITEM NO.	ITEM CODE		ITEM DESCRIPTION	UNIT OF MEASURE	ESTIMATED QUANTITY	UNIT PRICE (IN FIGURES)		ITEM TOTAL (IN FIGURES)	
59	390132		HOT MIX ASPHALT (TYPE A)	TON	53				
60	681132A		SUBDRAIN (Median)	LF	210				
61	731504	F	MINOR CONCRETE (Curb and Gutter)	CY	15				
62	840501		THERMOPLASTIC TRAFFIC STRIPE	LF	115				
63	840515		THERMOPLASTIC PAVEMENT MARKING	SF	42				
64	850111		PAVEMENT MARKER (RETROREFLECTIVE)	EA	9				
65	999990		MOBILIZATION (B)	LS	1				
TOTAL FOR ADDITIVE ALTERNATIVE BID - SCHEDULE B									

TOTAL BID - SCHEDULES A AND B	
--------------------------------------	--

(F) Final Pay Quantity

(P) Eligible for Partial Payment

(LS) Lump Sum

(B) Specific to Additive Alternative Bid – Schedule B

Note: The award will be based upon the total of both the Base Bid (Schedule A) and the Additive Alternate Bid – (Schedule B).

(NOTICE: Bidders failure to execute the questionnaires and statements contained in this proposal as required by applicable laws and regulations, or the determinations by County of El Dorado based upon those questionnaires and statements, may prohibit award of the subject Contract to the bidder.)

EXHIBIT A

PROPOSAL PAY ITEMS AND BID PRICE SCHEDULE
 SILVA VALLEY PARKWAY / SERRANO PARKWAY TRAFFIC CIRCULATION IMPROVEMENT PROJECT
 CONTRACT NO. PW 15-31095 / CIP NO. 72141

BASE BID - SCHEDULE A

ITEM NO.	ITEM CODE	ITEM DESCRIPTION	UNIT OF MEASURE	ESTIMATED QUANTITY	UNIT PRICE (IN FIGURES)	ITEM TOTAL (IN FIGURES)
1	72007	EXCAVATION SAFETY	LS	1		
2	80050	PROGRESS SCHEDULE (CRITICAL PATH METHOD)	LS	1		
3	120090	P CONSTRUCTION AREA SIGNS	LS	1		
4	120100	TRAFFIC CONTROL SYSTEM	LS	1		
5	128650A	PORTABLE CHANGEABLE MESSAGE SIGN	SWD	89		
6	130100	JOB SITE MANAGEMENT	LS	1		
7	130200	PREPARE WATER POLLUTION CONTROL PROGRAM	LS	1		
8	149001A	PREPARE FUGITIVE DUST CONTROL PLAN	LS	1		
9	150714	REMOVE THERMOPLASTIC TRAFFIC STRIPE	LF	1,270		
10	150715	REMOVE THERMOPLASTIC PAVEMENT MARKING	SF	130		
11	150722	REMOVE PAVEMENT MARKER	EA	18		
12	150742	REMOVE ROADSIDE SIGN	EA	1		
13	150763	REMOVE SIGN PANEL	EA	1		
14	151281	SALVAGE ROADSIDE SIGN	EA	1		

ITEM NO.	ITEM CODE	ITEM DESCRIPTION	UNIT OF MEASURE	ESTIMATED QUANTITY	UNIT PRICE (IN FIGURES)	ITEM TOTAL (IN FIGURES)
15	152386	RELOCATE ROADSIDE SIGN-ONE POST	EA	1		
16	152387	RELOCATE ROADSIDE SIGN-TWO POST	EA	1		
17	152440	ADJUST MANHOLE TO GRADE (SSMH)	EA	1		
18	152601	MODIFY DRAINAGE STRUCTURE (SV 15+21, 4'L)	EA	1		
19	153215A	REMOVE CONCRETE (Curb and Gutter)	CY	4		
20	150809A	REMOVE SUBDRAIN (Median)	LF	110		
21	160102	CLEARING AND GRUBBING	LS	1		
22	190101	F ROADWAY EXCAVATION	CY	57		
23	210350	FIBER ROLLS	LF	200		
24	260201	CLASS 2 AGGREGATE BASE	CY	12		
25	377501A	SLURRY SEAL	SY	280		
26	390132	HOT MIX ASPHALT (TYPE A)	TON	105		
27	510502	MINOR CONCRETE (MINOR STRUCTURE)	CY	1		
28	566011	ROADSIDE SIGN - ONE POST	EA	11		
29	568017	INSTALL SIGN PANEL ON EXISTING POST	EA	2		
30	641101A	12" PLASTIC PIPE (HDPE CORRUGATED PIPE -Type S)	LF	12		
31	681132A	SUBDRAIN (Median)	LF	161		

ITEM NO.	ITEM CODE		ITEM DESCRIPTION	UNIT OF MEASURE	ESTIMATED QUANTITY	UNIT PRICE (IN FIGURES)		ITEM TOTAL (IN FIGURES)	
32	731504	F	MINOR CONCRETE (Curb and Gutter)	CY	10				
33	731519		MINOR CONCRETE (Stamped Concrete)	SF	117				
34	750001		MISCELLANEOUS IRON AND STEEL	LB	259				
35	820141		OBJECT MARKER (Type K-1)	EA	2				
36	840501		THERMOPLASTIC TRAFFIC STRIPE	LF	1776				
37	840515		THERMOPLASTIC PAVEMENT MARKING	SF	1090				
38	850101		PAVEMENT MARKER (NON-REFLECTIVE) (Type A)	EA	25				
39	850111		PAVEMENT MARKER (RETROREFLECTIVE)	EA	110				
40	860201	P	SIGNAL AND LIGHTING	LS	1				
41	999990		MOBILIZATION	LS	1				
TOTAL FOR BASE BID - SCHEDULE A									

ADDITIVE ALTERNATIVE BID - SCHEDULE B

ITEM NO.	ITEM CODE		ITEM DESCRIPTION	UNIT OF MEASURE	ESTIMATED QUANTITY	UNIT PRICE (IN FIGURES)		ITEM TOTAL (IN FIGURES)	
42	120090		CONSTRUCTION AREA SIGNS (B)	LS	1				
43	128651A		TRAFFIC CONTROL SYSTEM (B)	LS	1				

ITEM NO.	ITEM CODE		ITEM DESCRIPTION	UNIT OF MEASURE	ESTIMATED QUANTITY	UNIT PRICE (IN FIGURES)		ITEM TOTAL (IN FIGURES)	
44	128650		PORTABLE CHANGEABLE MESSAGE SIGN (B)	SWD	45				
45	130100		JOB SITE MANAGEMENT (B)	LS	1				
46	150685A		REMOVE IRRIGATION FACILITY	LS	1				
47	153215		REMOVE CONCRETE (Curb and Gutter)	CY	7				
48	150809A		REMOVE SUBDRAIN (Median)	LF	210				
49	160102		CLEARING AND GRUBBING	LS	1				
50	190101	F	ROADWAY EXCAVATION	CY	10				
51	206563A		1-1/4" REMOTE CONTROL VALVE (EID)	EA	1				
52	208448A		RISER SPRINKLER ASSEMBLY (recycled water)	EA	22				
53	208594A		3/4" PLASTIC PIPE (Schedule 40) (recycled water)	LF	180				
54	208595A		1" PLASTIC PIPE (Schedule 40) (recycled water)	LF	25				
55	208596A		1-1/4" PLASTIC PIPE (Schedule 40) (recycled water)	LF	5				
56	208599A		2-1/2" PLASTIC PIPE (Schedule 40) (recycled water)	LF	103				
57	260203		CLASS 2 AGGREGATE BASE	CY	73				
58	377501A		SLURRY SEAL	SY	134				

ITEM NO.	ITEM CODE		ITEM DESCRIPTION	UNIT OF MEASURE	ESTIMATED QUANTITY	UNIT PRICE (IN FIGURES)		ITEM TOTAL (IN FIGURES)	
59	390132		HOT MIX ASPHALT (TYPE A)	TON	53				
60	681132 A		SUBDRAIN (Median)	LF	210				
61	731504	F	MINOR CONCRETE (Curb and Gutter)	CY	15				
62	840501		THERMOPLASTIC TRAFFIC STRIPE	LF	115				
63	840515		THERMOPLASTIC PAVEMENT MARKING	SF	42				
64	850111		PAVEMENT MARKER (RETROREFLECTIVE)	EA	9				
65	999990		MOBILIZATION (B)	LS	1				
TOTAL FOR ADDITIVE ALTERNATIVE BID - SCHEDULE B									

TOTAL BID - SCHEDULES A AND B	
--------------------------------------	--

(F) Final Pay Quantity

(P) Eligible for Partial Payment

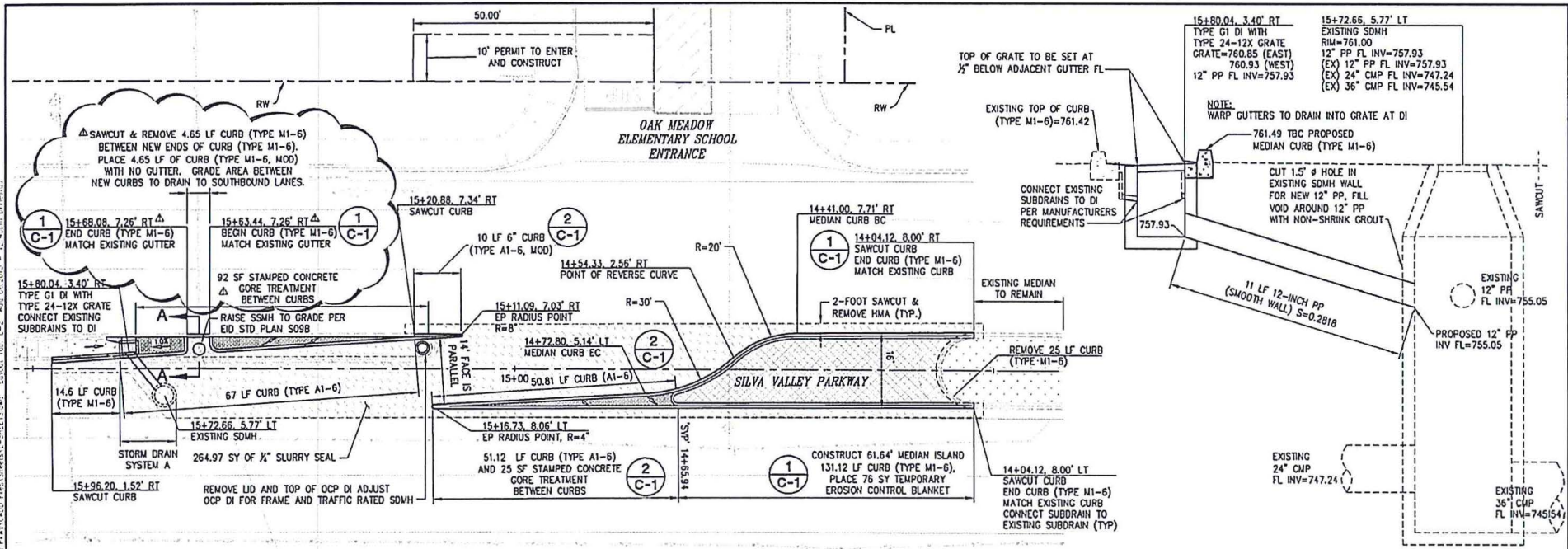
(LS) Lump Sum

(B) Specific to Additive Alternative Bid – Schedule B

Note: The award will be based upon the total of both the Base Bid (Schedule A) and the Additive Alternate Bid – (Schedule B).

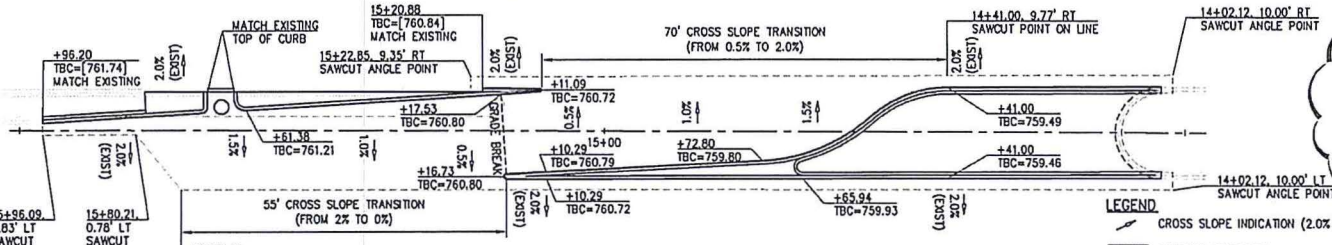
(NOTICE: Bidders failure to execute the questionnaires and statements contained in this proposal as required by applicable laws and regulations, or the determinations by County of El Dorado based upon those questionnaires and statements, may prohibit award of the subject Contract to the bidder.)

ORIGINAL SCALE IS IN INCHES
 Elevation: 15-0032 4A 16 of 16
 PROJECT: SILVA VALLEY PARKWAY / SERRANO PARKWAY TRAFFIC CIRCULATION IMPROVEMENT PROJECT
 DATE: 06/17/15



**OAK MEADOW SCHOOL ENTRANCE
MEDIAN MODIFICATION DETAILS**

SCALE: 1"=10'



HMA PAVEMENT CROSS SLOPE DETAIL

SCALE: 1"=10'

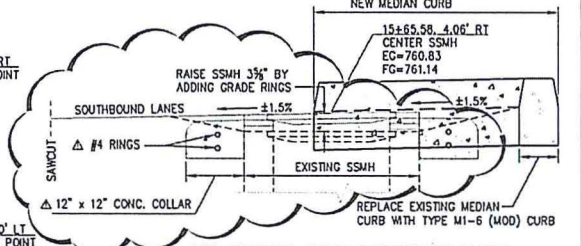
NOTE:
FOR ALL SIGNS, STRIPING AND
MARKINGS SEE SPD SHEETS

LEGEND

- STAMPED CONCRETE
- BACKFILL NEW MEDIAN
- EXISTING MEDIAN
- 1/2" SLURRY SEAL

STORM DRAIN SYSTEM A PROFILE

SCALE: 1"=2'



SECTION A-A DETAIL

NOTE: SAME DETAIL APPLIES ON OPPOSITE SIDE OF SSMH

- NOT TO SCALE
1. COORDINATE WITH EID INSPECTION DEPARTMENT (530) 642-4194 PROVIDING 72 HOURS NOTICE PRIOR TO SSMH WORK
 2. SEE EID WEB SITE WWW.EID.ORG FOR STD PLAN S09B

OAK MEADOW INTERSECTION LAYOUT

REVISION NO. DATE BY DESCRIPTION		DESIGNED DRP CHECKED DCA DATE 06/17/15 POND NUMBER 2347/2344		COUNTY OF EL DORADO COMMUNITY DEVELOPMENT AGENCY TRANSPORTATION DIVISION	SILVA VALLEY PARKWAY / SERRANO PARKWAY TRAFFIC CIRCULATION IMPROVEMENT PROJECT	SHEET L-2 REV 5 OF 15 72141
PREPARED UNDER THE SUPERVISION OF: Dwight D. Anderson REGISTERED CIVIL ENGINEER DATE: 06/17/15						