

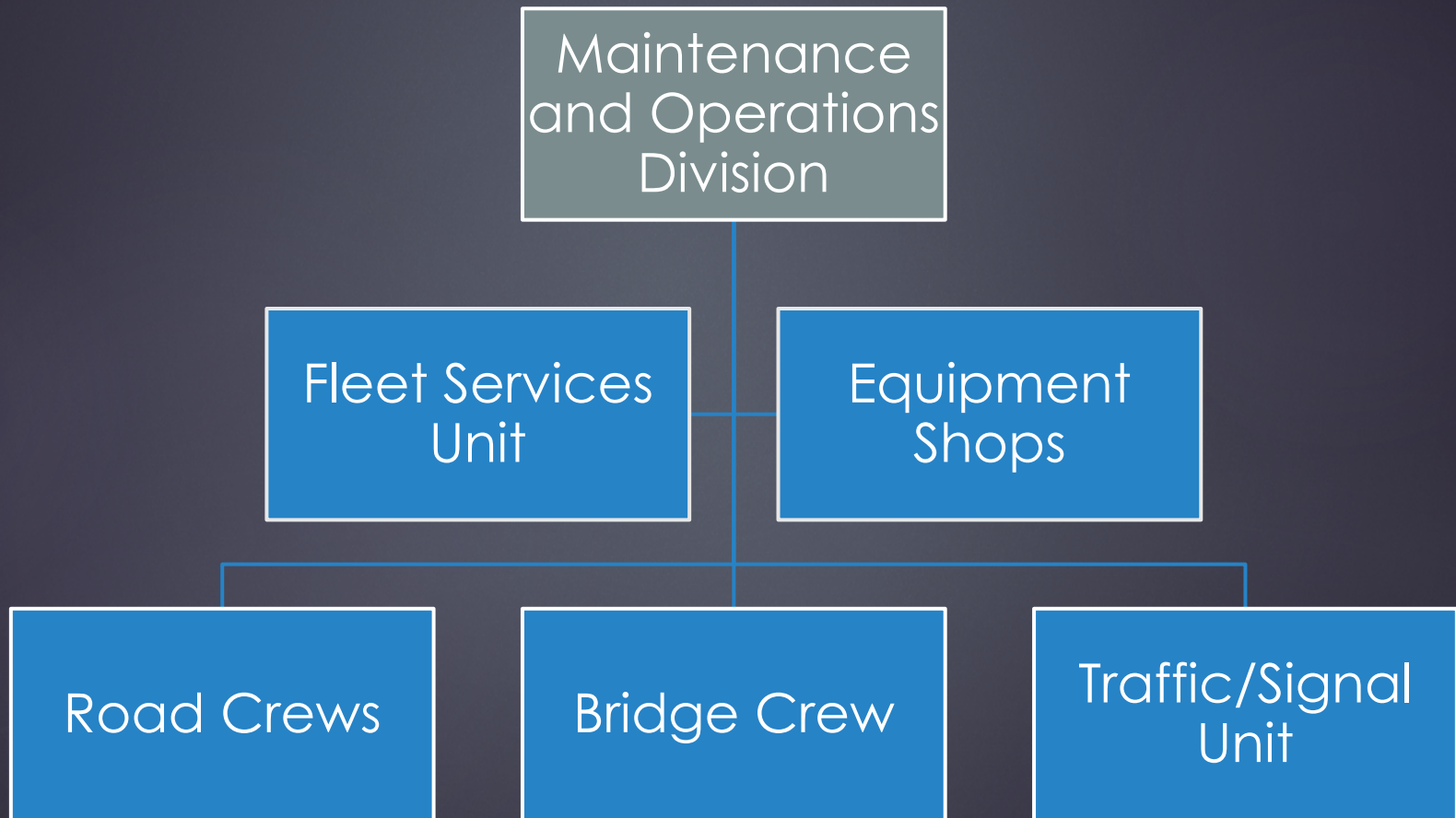
El Dorado County

Department of Transportation

Maintenance and Operations Update



Maintenance and Operations Division Units



Services Performed by DOT Maintenance Staff



Maintenance and Operations Division has four main units contributing to road maintenance activities: road crews, bridge crew, traffic/signal crew, and equipment shop.

- Bridge Crew is responsible for bridge maintenance, curb, gutter and sidewalk repairs, graffiti removal, and guardrail repairs.
- Traffic/Signal Crew is responsible for sign maintenance, traffic signal and lighting maintenance and striping and marker maintenance.
- Equipment Shops are responsible for heavy equipment maintenance and repairs.
- Road Crews are responsible for dead animal removal, drainage culverts, erosion control, grading, roadside ditching, ROW brushing and herbicide application, road maintenance, road repairs and street sweeping.

Road Repair Activities

- Road Maintenance Activities include:

- Crack Sealing

- Cracks in asphalt roadways provide a place for moisture to reach the pavement base and will ultimately lead to more extensive deterioration.

- Overlays

- A new layer of asphalt applied over the existing layer of base asphalt. Overlays can be utilized to reintroduce crown in roadways. out)

- Base Repair (Grind & Pave)

- Removal of failed sections where the pavement is fractured and broken. This allows water to weaken the subgrade under the roadway. (contracted out and force account)



Surface Treatment Applications

Micro-milling

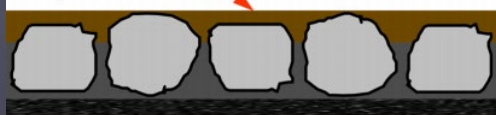
Removes the high points of existing pavement to restore proper grade and remove surface irregularities, improving rideability.



Micro surface

A thin application containing polymer modified emulsion and graded aggregate. Can be applied thicker for slight rutting.

Slurry or Micro Seal



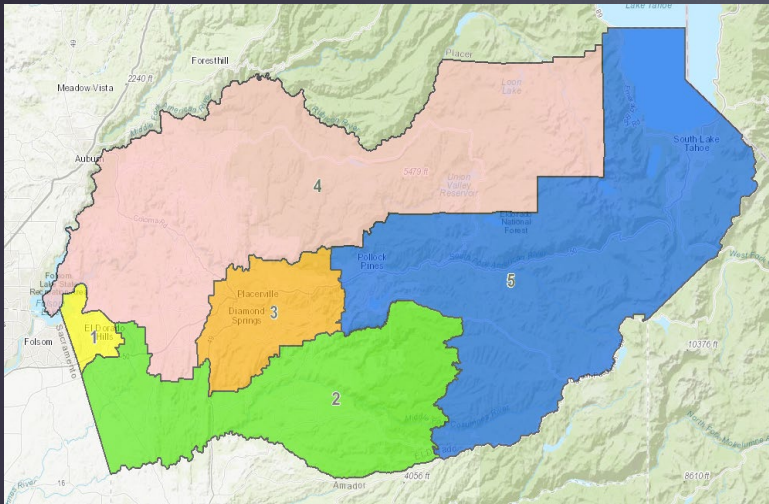
Rubberized Chip Cape Seal

An integrated process, with one treatment followed by one or two more processes. The multi-layer process gives strength to the rubberized chip seal with the added benefit of a quieter, smoother ride.



Project Selection Process

- ▶ There are many factors DOT takes into consideration when determining road selections:
 - ▶ Funding Source (SB1, Tribe, TOT/GF, Measure S)



- ▶ Districts within the County
 - ▶ PCI (Pavement Condition Index)
 - ▶ ADT (Average Daily Traffic)
 - ▶ Estimated Life/Return Time: Factors include traffic loading, initial design, water drainage, pavement condition, and environmental factors
 - ▶ Economies of scale
- ▶ Ideally, road selections consist of 80% of fair roads and 20% of bad roads. Maintaining fair roads while addressing a smaller portion of bad roads allows a greater number of roads to be completed with limited funding.
 - ▶ The project selection process has allowed DOT to increase the PCI from 64 in 2018 to 70 in 2025.

Projects Completed in 2025

- ✓ Governors Subdivision Phase 2
- ✓ E-16 Phase 2 (Pleasant Valley Road to four corners)
- ✓ Larsen and Barkley Phase 1
- ✓ Salmon Falls Phase 2 (Gallagher Road to Green Valley Road)
- ✓ Christmas Valley Area Phase 1 (residential roads off South Upper Truckee)
- ✓ Cable Road (dirt section)



Summer 2026 Road Maintenance Projects



▶ SB1 Funded Projects

- ▶ Larsen and Barkley Phase 2, and North Canyon Phase 1
- ▶ Sly Park Road Phase 2 (Mormon Emigrant to Pleasant Valley Road), Leisure Lane, Park Creek and Mormon Emigrant Trail
- ▶ Highland Village and Lakeridge Oaks
- ▶ Green Valley Road (Cameron Park Drive to Lotus Road)

▶ Other Revenue Funded Projects

- ▶ Grind and Pave in SLT/Tahoma (Measure S and Road Fund)

Future Road Maintenance Projects

- ▶ Budgeted Projects:
 - ▶ North Canyon Phase 2
 - ▶ Cambridge Road
 - ▶ El Dorado Hills Blvd (Harvard to Highway 50)
 - ▶ Green Valley Road (Lotus Road to City Limits)
 - ▶ Christmas Valley/Lower Paradise area (grind and pave only)
 - ▶ Countywide culvert repairs
- ▶ Proposed Projects:
 - ▶ Zone 8 in SLT (Pending 26/27 budget)



Roadside Vegetation Removal



- ▶ FY 25/26 budget includes \$650,000 for roadside brush removal funded by local discretionary funds (Tribe).
- ▶ Since July 1, Gold Ridge 1, 2 and 3 areas, Cambridge Road, South Shingle and countywide downed tree cleanup has been completed by contracted forces.
- ▶ In addition to contracted brush removal, DOT utilizes Growlersberg, Ponderosa Camp crews and Tribal Fire Department.
- ▶ Locations completed by other agencies include Davidson and Green Valley Road.
- ▶ Additional locations will be identified and completed until funds are expended.
- ▶ Brush removal is completed by force account for SB1 projects.