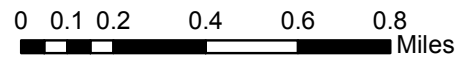
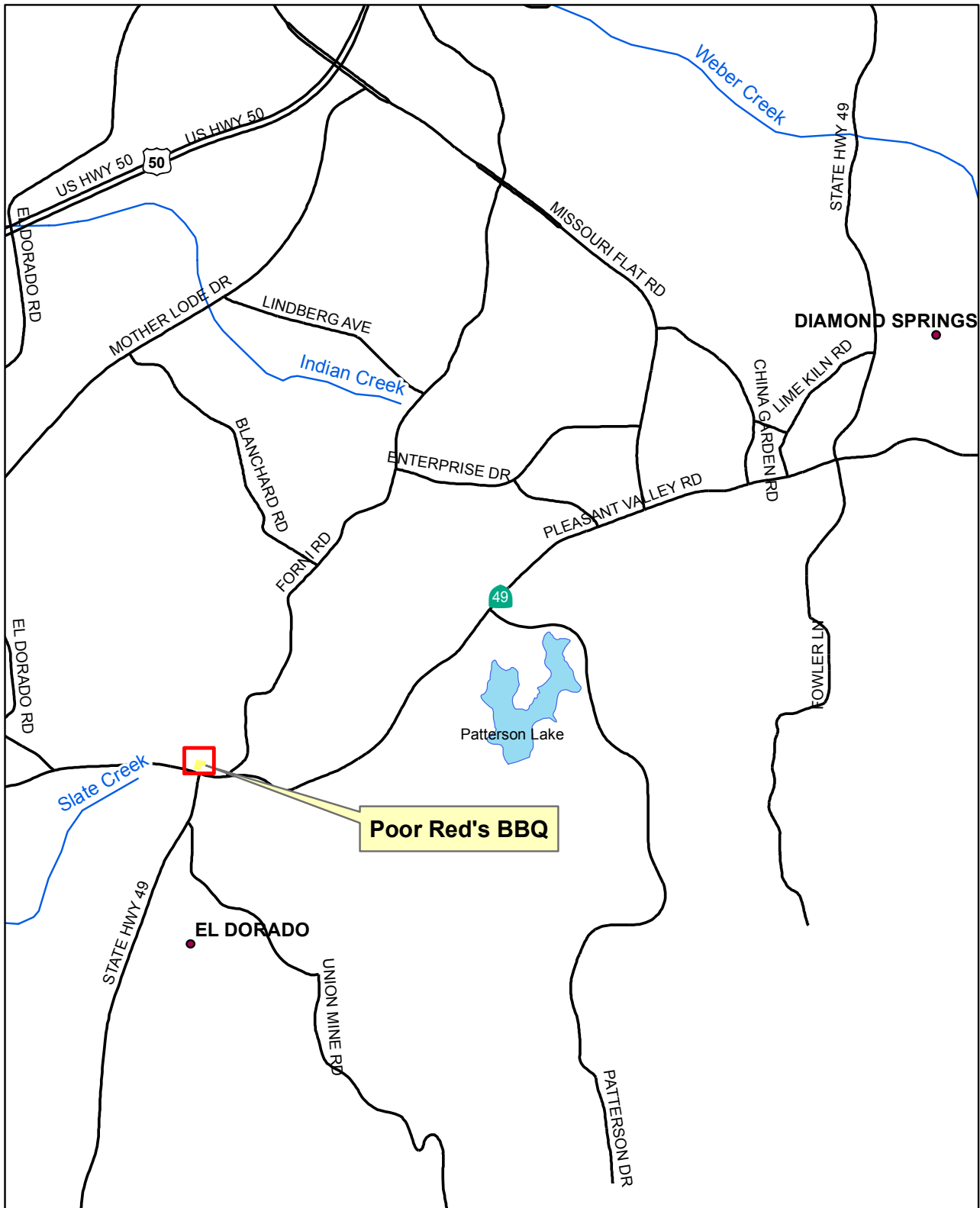


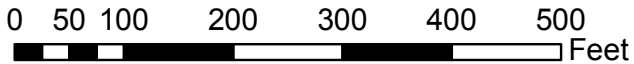
CUP19-0010

EXHIBIT A - VICINITY MAP



CUP19-0010

EXHIBIT B - LOCATION MAP



CUP19-0010

EXHIBIT C - SITE AERIAL PHOTO



 ADJACENT RESIDENCES

0 15 30 60 90 120 150 Feet

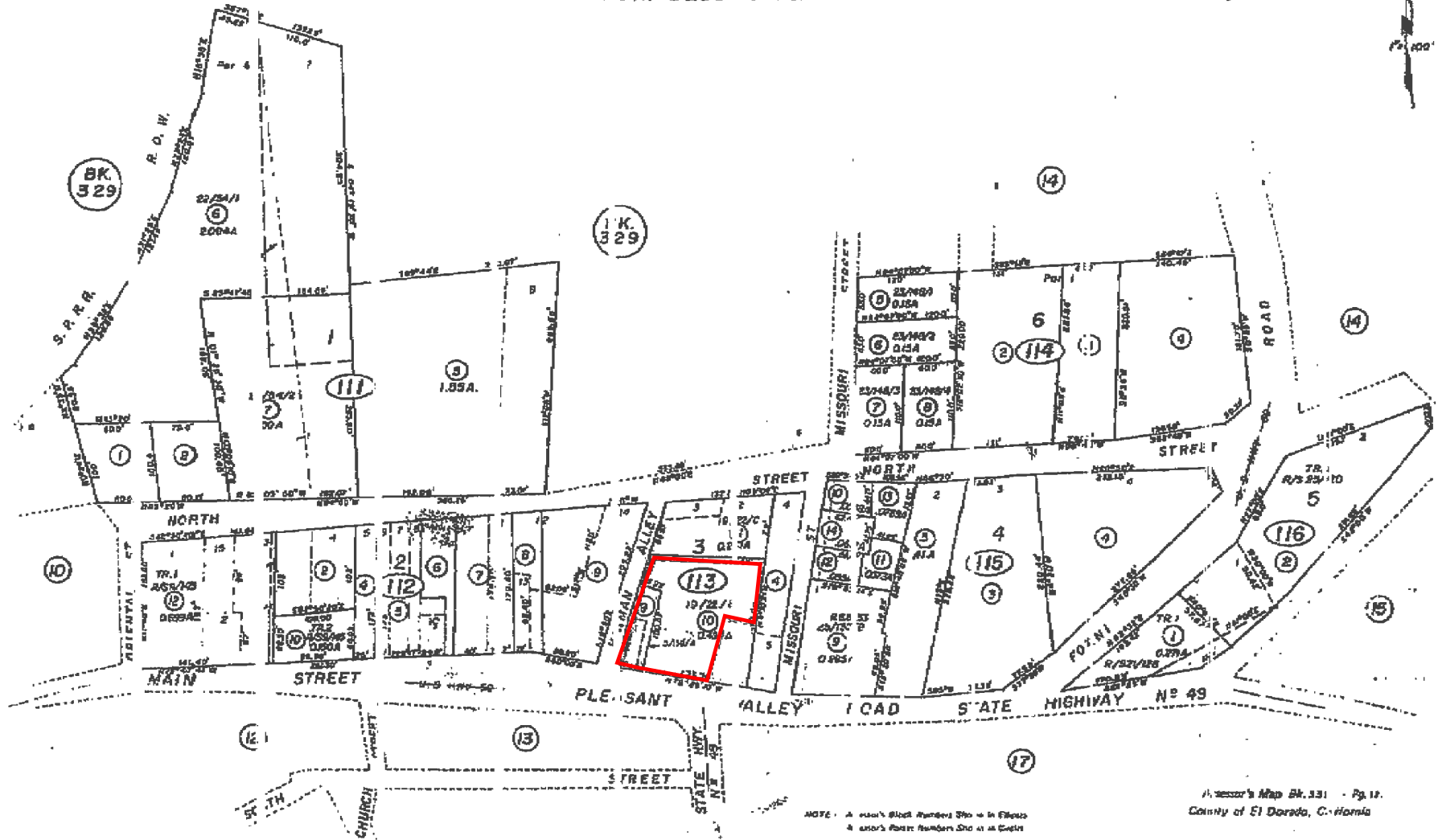
EXHIBIT D - ASSESSOR'S PARCEL MAP

POR. N 1/2 SEC. 35, T10N, R10E M.D.M.
 EL DORADO TOWNSHIP, BLOCKS 2, 3, 4 & 5.
 POR. BLOCKS 1 & 6.

Tax Act Code

331.11

100'



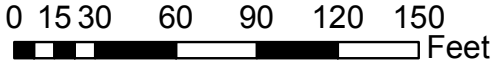
NOTE: A parcel's Block Number Shown in Ellipse
 & Parcel's Range Number Shown in Circle

Assessor's Map BK. 331 - Pg. 17
 County of El Dorado, C. Harris

CUP19-0010

CUP19-0010

EXHIBIT E - GENERAL PLAN LAND USE MAP



CUP19-0010

EXHIBIT F - ZONING MAP

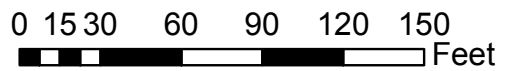
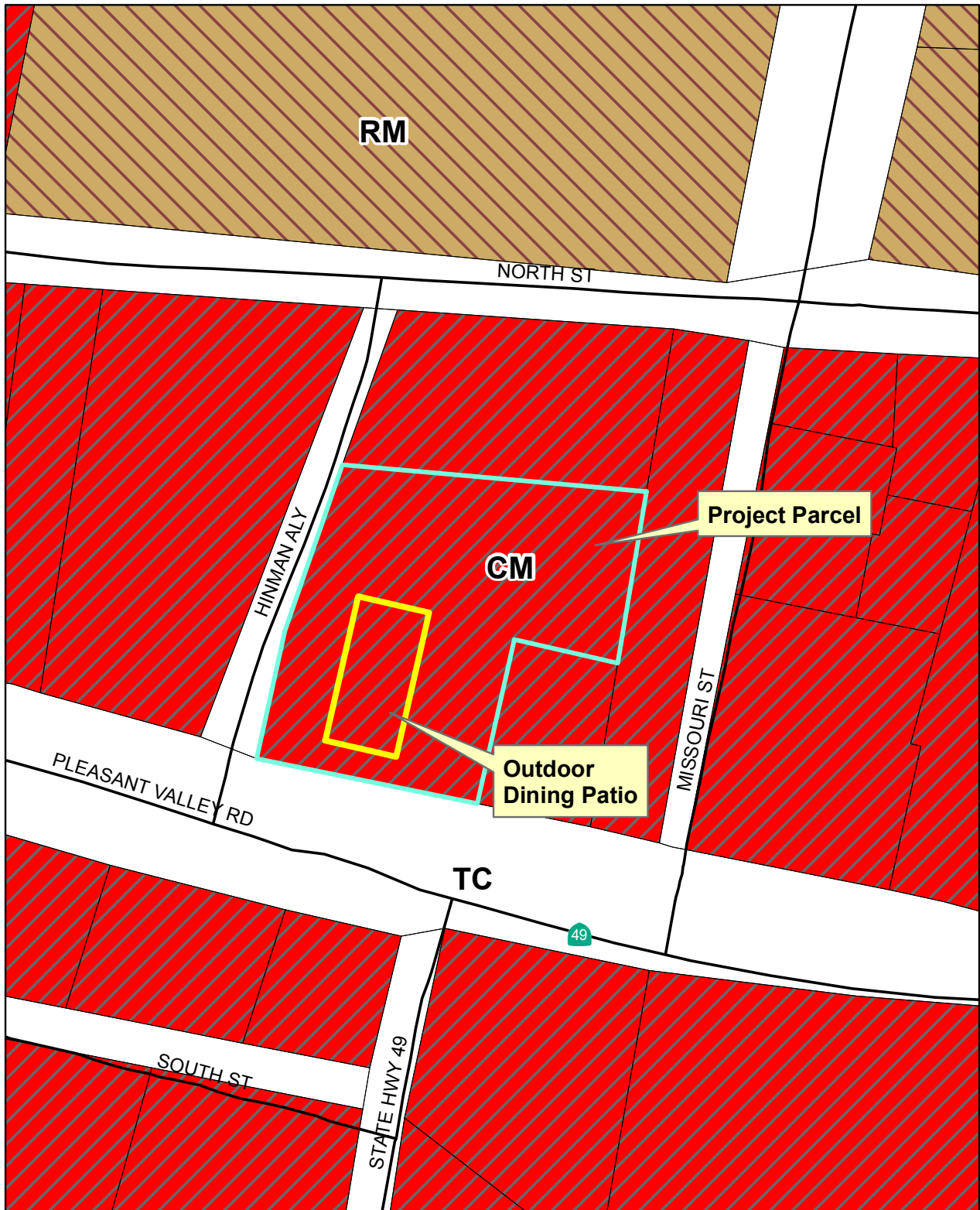


EXHIBIT G - ENVIRONMENTAL NOISE ASSESSMENT

Environmental Noise Assessment

Poor Red's BBQ Restaurant and Bar Outdoor Music Events

El Dorado (El Dorado County), California

BAC Job # 2019-136

Prepared For:

Jeff Genovese

Poor Red's BBQ
6221 Pleasant Valley Road
El Dorado, CA 95623

Prepared By:

Bollard Acoustical Consultants, Inc.



Dario Gotchet, Consultant

September 24, 2019



CUP19-0010

EXHIBIT G - ENVIRONMENTAL NOISE ASSESSMENT

Bollard Acoustical Consultants, Inc. (BAC)

Introduction

Poor Red's BBQ Restaurant and Bar is located at 6221 Pleasant Valley Road in El Dorado (El Dorado County), CA (APN: 331-113-13). Existing land uses in the project vicinity include commercial and residential. The project area and adjacent land uses are illustrated on Figure 1.

The restaurant and bar currently holds outdoor live music events during the hours of 10:00 a.m. to 10:00 p.m. under Temporary Use Permit #TUP19-0003 issued by the County of El Dorado. The project proposes the continuation of music events during the same time period. The project does not propose outdoor music events during the hours of 10:00 p.m. to 10:00 a.m.

Due to the potential noise generation of the project and the proximity to nearby residential uses, the County of El Dorado has requested an environmental noise assessment to ensure that the applicable noise standards are satisfied. In response to this request, the project applicant has retained Bollard Acoustical Consultants, Inc. (BAC) to prepare this noise assessment. Specifically, the purposes of this assessment are to quantify amplified music sound levels at the nearby residential uses, to compare those noise levels against the applicable El Dorado County noise standards and baseline noise levels in the area, and to recommend noise mitigation measures for any identified potentially significant noise impacts.

Noise Fundamentals and Terminology

Noise is often described as unwanted sound. Sound is defined as any pressure variation in air that the human ear can detect. If the pressure variations occur frequently enough (at least 20 times per second), they can be heard, and thus are called sound. Measuring sound directly in terms of pressure would require a very large and awkward range of numbers. To avoid this, the decibel scale was devised. The decibel scale allows a million-fold increase in pressure to be expressed as 120 dB. Another useful aspect of the decibel scale is that changes in levels (dB) correspond closely to human perception of relative loudness. Appendix A contains definitions of Acoustical Terminology. Figure 2 shows common noise levels associated with various sources.

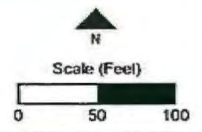
The perceived loudness of sounds is dependent upon many factors, including sound pressure level and frequency content. However, within the usual range of environmental noise levels, perception of loudness is relatively predictable, and can be approximated by weighting the frequency response of a sound level meter by means of the standardized A-weighting network. There is a strong correlation between A-weighted sound levels (expressed as dBA) and community response to noise. For this reason, the A-weighted sound level has become the standard tool of environmental noise assessment. All noise levels reported in this section are in terms of A-weighted levels in decibels.

EXHIBIT G - ENVIRONMENTAL NOISE ASSESSMENT



Legend

- ▭ Parcel Boundaries (Approximate)
- ▭ Restaurant and Bar Outdoor Dining Area
- ▣ Speaker Location Facing South
- ▴ Event Music Reference Noise Level Measurement Position
- Short-Term Noise Level Measurement Locations (Event Simulation)
- Long-Term Ambient Noise Level Measurement Locations



Poor Red's BBQ Restaurant and Bar
 Outdoor Music Events
 El Dorado County, California
 Project Area

Figure 1



EXHIBIT G - ENVIRONMENTAL NOISE ASSESSMENT

Boilerd Acoustical Consultants, Inc. (BAC)

Figure 2
Noise Levels Associated with Common Noise Sources

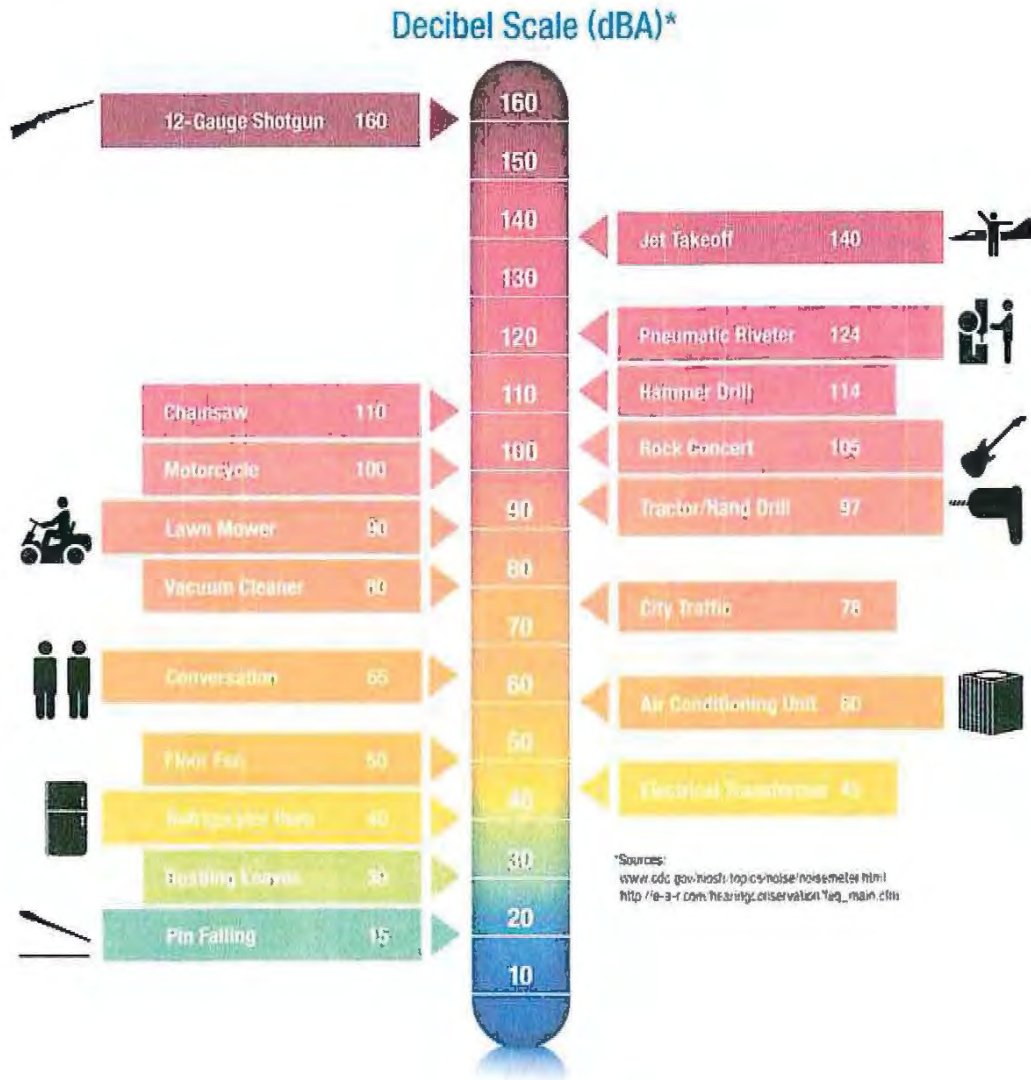


EXHIBIT G - ENVIRONMENTAL NOISE ASSESSMENT

Boilard Acoustical Consultants, Inc. (BAC)

Community noise is commonly described in terms of the "ambient" noise level, which is defined as the all-encompassing noise level associated with a given noise environment. A common statistical tool to measure the ambient noise level is the average, or equivalent, sound level (L_{eq}) over a given time period (usually one hour). The L_{eq} is the foundation of the Day-Night Average Level noise descriptor, L_{dn} , and shows very good correlation with community response to noise.

The Day-Night Average Level (L_{dn}) is based upon the average noise level over a 24-hour day, with a +10 decibel weighting applied to noise occurring during nighttime (10 p.m. to 7 a.m.) hours. The nighttime penalty is based upon the assumption that people react to nighttime noise exposures as though they were twice as loud as daytime exposures. Because L_{dn} represents a 24-hour average, it tends to disguise short-term variations in the noise environment. L_{dn} -based noise standards are commonly used to assess noise impacts associated with traffic, railroad and aircraft noise sources.

Existing Ambient Noise Environment in the Project Vicinity

The ambient noise environment in the immediate project vicinity is defined primarily by traffic noise from Pleasant Valley Road and Highway 49, and by commercial operations. To generally quantify existing ambient noise levels in the project vicinity, BAC conducted long-term (48-hour) ambient noise surveys at two locations in the project vicinity from August 7-9, 2019. The long-term noise measurement locations are shown on Figure 1, identified as sites LT-1 and LT-2. Photographs of the noise survey locations are provided in Appendix B.

As mentioned previously, existing land uses in the project vicinity include commercial and residential. Commercial uses are typically not considered to be noise-sensitive, but rather noise generating. However, the nearby residential uses would be considered noise-sensitive. Long-term noise measurement site LT-1 was selected to be representative of the existing ambient noise environment at the nearest residential properties to the north, east and west of the project (APN's: 331-113-011, 331-113-004 and 331-112-009, respectively). The nearest residential properties to the south of the project (APN's: 331-132-004 and 331-171-002) are located approximately 50 feet from the centerlines of adjacent roadways, Pleasant Valley Road and Highway 49. However, a long-term noise level meter was unable to be placed at either of those properties due to equipment safety constraints. To quantify the existing ambient noise level environment at the nearest residential properties to the south, a long-term noise level meter was placed in the front yard of 6211 Pleasant Valley Road at a distance of approximately 50 feet from the centerline of Pleasant Valley Road (site LT-2). The measurements taken at site LT-2, approximately 50 feet from the centerline of Pleasant Valley Road, are believed to be representative of the existing ambient noise level environment at APN's: 331-132-004 and 331-171-002, which are located similar distances from the centerlines of the adjacent roadways.

Larson-Davis Laboratories (LDL) Model 820 precision integrating sound level meters were used to complete the long-term noise level measurement surveys. The meters were calibrated before use with an LDL Model CAL200 acoustical calibrator to ensure the accuracy of the measurements. The equipment used meets all pertinent specifications of the American National Standards Institute for Type 1 sound level meters (ANSI S1.4). The results of the long-term

*Environmental Noise Assessment
Poor Red's BBQ Restaurant and Bar Outdoor Music Events
El Dorado (El Dorado County), California
Page 4*

EXHIBIT G - ENVIRONMENTAL NOISE ASSESSMENT

Bollard Acoustical Consultants, Inc. (BAC)

ambient noise surveys are shown numerically and graphically in Appendices C and D (respectively), and are summarized below in Table 1.

Table 1
Summary of Long-Term Ambient Noise Measurement Results – August 7-9, 2019¹

Site ²	Date	L _{dn} , dB	Average Measured Hourly Noise Levels, dB ³					
			Daytime ⁴		Evening ⁵		Nighttime ⁶	
			Leq	L _{max}	Leq	L _{max}	Leq	L _{max}
LT-1	8/7-8/8	65	61 (54-69)	78 (71-101)	58 (57-59)	77 (72-80)	58 (45-67)	72 (60-91)
	8/8-8/9	67	57 (56-61)	73 (68-78)	57 (57-57)	72 (70-74)	61 (55-68)	71 (58-86)
LT-2	8/7-8/8	69	65 (59-71)	87 (77-100)	59 (59-60)	85 (83-88)	62 (50-66)	83 (70-93)
	8/8-8/9	67	64 (60-69)	86 (78-97)	61 (60-62)	88 (84-92)	60 (50-65)	81 (73-88)

¹ Detailed summaries of the noise monitoring results are provided in Appendices C and D.
² Long-term ambient noise monitoring locations are identified on Figure 1.
³ Noise levels are presented in the following format: Average (Low-High)
⁴ Daytime hours: 7 AM to 10 PM
⁵ Evening hours: 7 PM to 10 PM
⁶ Nighttime hours: 10 PM to 7 AM
Source: *Bollard Acoustical Consultants, Inc., 2019*

As shown in Table 1, existing average measured noise levels were generally higher at site LT-2. This is believed to be due to the proximity of Pleasant Valley Road and Highway 49. The significance of the measured existing ambient noise environment is discussed in the following section on noise criteria.

Criteria for Acceptable Noise Exposure

El Dorado County General Plan Noise Element

The Noise Element of the El Dorado County General Plan (Chapter 6) contains policies to ensure that County residents are not subjected to noise beyond acceptable levels. The General Plan policies which are applicable to this evaluation are reproduced below:

Policy 6.5.1.2 Where proposed non-residential land uses are likely to produce noise levels exceeding the performance standards of Table 2 (General Plan Table 6-2) at existing or planned noise-sensitive uses, an acoustical analysis shall be required as part of the environmental review process so that noise mitigation may be included in the project design.

Policy 6.5.1.7 Noise created by new proposed non-transportation noise sources shall be mitigated so as not to exceed the noise level standards of Table 2 for noise-sensitive uses.

EXHIBIT G - ENVIRONMENTAL NOISE ASSESSMENT

Bollard Acoustical Consultants, Inc. (BAC)

Policy 6.5.1.13 When determining the significance of impacts and appropriate mitigation to reduce those impacts for new development projects, including ministerial development, the following criteria shall be taken into consideration:

- A. In areas in which ambient noise levels are in accordance with the standards in Table 2 (General Plan Table 6-2), increases in ambient noise levels caused by new non-transportation noise sources that exceed 5 dBA shall be considered significant; and
- B. In areas in which ambient noise levels are not in accordance with the standards in Table 2 (General Plan Table 6-2), increases in ambient noise levels caused by new non-transportation noise sources that exceed 3 dBA shall be considered significant.

**Table 2
Noise Level Performance Standards for Noise-Sensitive Land Uses
Affected by Non-Transportation Sources**

Noise Level Descriptor	Daytime (7 AM to 7 PM)		Evening (7 PM to 10 PM)		Nighttime (10 PM to 7 AM)	
	Community	Rural	Community	Rural	Community	Rural
Hourly Leq, dB	55	50	50	45	45	40
Maximum Level, L _{max} dB	70	60	60	55	55	50
<p>Each of the noise levels specified above shall be lowered by five dB for simple tone noises, noises consisting primarily of speech or music, or for recurring impulsive noises. These noise level standards do not apply to residential units established in conjunction with industrial or commercial uses (e.g., caretaker dwellings).</p> <p>The County can impose noise level standards which are up to 5 dB less than those specified above based upon determination of existing low ambient noise levels in the vicinity of the project site.</p> <p>In Community areas the exterior noise level standard shall be applied to the property line of the receiving property. In Rural Areas the exterior noise level standard shall be applied at a point 100' away from the residence. The above standards shall be measured only on property containing a noise sensitive land use as defined in Objective 6.5.1. This measurement standard may be amended to provide for measurement at the boundary of a recorded noise easement between all effected property owners and approved by the County.</p> <p><i>Source: El Dorado County General Plan, Noise Element, Table 6-2.</i></p>						

Because the project parcel and adjacent parcels are located within in the community of El Dorado, the *community* noise standards shown in Table 2 would be applicable at the property line of a receiving property. In addition, the noise standards applicable to project outdoor event music and speech would be reduced by 5 dB (as noted in Table 2). However, if ambient conditions exceed the Table 2 standards, then Policy 6.5.1.13 requires that noise generated by the project not result in an increase over ambient conditions of more than 3 dB.

Noise Standards Applicable to the Project

Taking into consideration the project noise source type, and measured ambient noise levels at long-term measurement sites LT-1 and LT-2 (Table 1), the El Dorado County noise level limits applicable to project outdoor event music have been adjusted pursuant to the criteria identified in the General Plan and are summarized in Table 3.

EXHIBIT G - ENVIRONMENTAL NOISE ASSESSMENT

Bollard Acoustical Consultants, Inc. (BAC)

The project is proposing to have outdoor event music during daytime and evening hours only (10:00 a.m. to 10:00 p.m.). As a result, the following assessment of project outdoor music noise exposure focuses on compliance with the County's adjusted daytime and evening noise level limits at nearby residential properties (Table 3).

Table 3
Adjusted El Dorado County Event Amplified Music & Speech

APN	Time Period	Unadjusted Community Standards		Adjusted for Music & Speech ¹		Adjustment for Ambient ²		Applicable County Standards	
		Leq	Lmax	Leq	Lmax	Leq	Lmax	Leq	Lmax
331-112-009	7 AM – 7 PM	55	70	50	65	Yes	Yes	60	76
	7 PM – 10 PM	50	60	45	55	Yes	Yes	60	75
331-113-011	7 AM – 7 PM	55	70	50	65	Yes	Yes	60	76
	7 PM – 10 PM	50	60	45	55	Yes	Yes	60	75
331-113-004	7 AM – 7 PM	55	70	50	65	Yes	Yes	60	76
	7 PM – 10 PM	50	60	45	55	Yes	Yes	60	75
331-171-002	7 AM – 7 PM	55	70	50	65	Yes	Yes	67	89
	7 PM – 10 PM	50	60	45	55	Yes	Yes	62	88
331-132-004	7 AM – 7 PM	55	70	50	65	Yes	Yes	67	89
	7 PM – 10 PM	50	60	45	55	Yes	Yes	62	88

¹ The noise standards shall be lowered by -5 dB for noises consisting of speech and music (as noted in Table 2).
² If ambient conditions exceed the Table 2 standards (after adjustment for music and speech), the noise level limit becomes the ambient level +3 dB (General Plan Policy 6.5.1.13). The adjusted daytime and evening noise level limits for each residential property are based upon the lowest average measured hourly or maximum noise levels over the entire monitoring period.

Evaluation of Project Noise Generation

Outdoor Amplified Event Music Noise Levels

The project proposes to have amplified music on an existing outdoor patio for restaurant and bar patrons. Figure 1 shows the approximate location of the proposed outdoor sound system setup and existing outdoor patio area.

To quantify the noise levels generated from amplified event music on the outside restaurant patio, BAC conducted short-term noise level measurements on Wednesday, July 24, 2019 during a music event simulation. Larson Davis Laboratories Model 831 precision integrating sound level meters equipped with real-time frequency analyzers were used for the noise level measurements. The meters were calibrated before use and placed on a tripod 5 feet above ground at six (6) locations. The measurement locations, short-term noise measurement sites ST-1 through ST-6, were intended to quantify amplified event music noise exposure at the nearest residential property lines. Figure 1 shows the short-term noise measurement locations and nearest residential properties.

EXHIBIT G - ENVIRONMENTAL NOISE ASSESSMENT

Bollard Acoustical Consultants, Inc. (BAC)

The sound system was set to produce sound levels typical of what would be produced by amplified event music playing on the outside patio. The simulation utilized a reference music level of 75 dB at a distance of 50 feet from the speakers. While music was being played, short-term noise level measurements were conducted at the reference distance of 50 feet, and simultaneously at sites ST-1 through ST-6. This reference was selected because BAC believes that it is a conservative level at which amplified event music could occur given the size of the patio area. The reference noise level was verified and agreed upon by the restaurant manager and owner, indicating that it was a reasonable representation of the noise exposure associated events on the outdoor patio. The sound system placement and speaker orientation (facing south) was based on information provided by the owner, and is the likely speaker orientation during an outdoor music event. Appendix B shows photographs of the sound system setup location in the existing outdoor patio area.

The simulation consisted of playing digital recordings of typical music which might be used during an event using a pair of Yamaha MSR 400 Watt speakers and a Yamaha MSR 800 Watt Subwoofer, all with built-in amplifiers, and an MP3 player as the music source. As previously mentioned, the sound system speakers were positioned where the event music setup is proposed to be at outdoor amplified music events.

Table 4 summarizes the noise level measurement results relative to the County's adjusted daytime and evening noise level limits (Table 3). It is important to note that the measured event music simulation noise levels shown in Table 4 include substantial contributions from traffic on Pleasant Valley Road and Highway 49. As a result, detailed analysis beyond the overall measured event simulation noise levels was performed to determine the extent by which simulated event music satisfied or exceeded the County's adjusted noise level limits. That discussion follows the results provided in Table 4.

Table 4
Measured Music Event Simulation Noise Levels at Nearest Residential Property Lines

Site ¹	Associated Parcel	Time	Measured Overall Noise Levels at Property Line, dBA ²		Noise Sources / Notes
			Leq	Lmax	
ST-1	331-112-009	9:48 AM	58	65	Music and traffic audible
ST-2	331-112-009	9:57 AM	57	63	Music audible
ST-3	331-113-011	10:07 AM	58	59	Music audible, dominant source
ST-4	331-113-004	10:18 AM	53	60	Music audible
ST-5	331-171-002	10:31 AM	70	84	Music barely audible, traffic dominant source
ST-6	331-132-004	10:45 AM	62	69	Music barely audible, traffic dominant source

¹ Noise measurement locations are shown on Figure 1.
² Measured overall noise levels include music event noise and local traffic, as indicated.
 Source: *Bollard Acoustical Consultants, Inc., 2019*

EXHIBIT G - ENVIRONMENTAL NOISE ASSESSMENT

Bollard Acoustical Consultants, Inc. (BAC)

Discussion of Music Event Simulation Noise Survey Results

According to BAC staff observations, the greatest contribution of traffic noise exposure during the event music simulation occurred at sites ST-5 and ST-6 – the sites adjacent to Pleasant Valley Road and Highway 49. It was further noted that event music noise levels at sites ST-5 and ST-6 were barely audible during the amplified simulation. Based on the results from the event music simulation, including the significant masking of event music noise levels by Pleasant Valley Road and Highway 49, it is believed that project outdoor event music would satisfy the adjusted El Dorado County daytime and evening hourly average and maximum noise level limits at the nearest residential properties to the south (APN's: 331-132-004 and 331-171-002).

BAC staff observations noted that ambient noise level environment at sites ST-2 through ST-4 was dominated by a combination of noise from traffic (Highway 49 and Pleasant Valley Road), and air-handling equipment located on the rooftop of the project property building (Poor Red's restaurant). It was further noted that the amplified music was the most audible at sites ST-2 through ST-4 during the event simulation. As indicated in Table 4, music event simulation noise levels at measurement locations to the immediate north, east and west of the restaurant outdoor patio (sites ST-1 through ST-4) were determined to be in compliance with the adjusted El Dorado County daytime and evening hourly average (L_{eq}) and maximum (L_{max}) noise level limits associated with those parcels (APN's: 331-113-011, 331-113-004 and 331-112-009).

Upon analysis of the long-term measurement data, it was determined that the ambient noise environment at the nearest residences to the north of the project property (represented by site LT-1) was characterized primarily by rooftop-mounted air-handling equipment associated with the project property building (Poor Red's restaurant) when that equipment was in operation. It should be noted that the adjusted El Dorado County noise level limits applicable to those closest uses to the north applied in this noise study were based on the measured ambient noise levels during the BAC survey, including the Poor Red's rooftop mechanical equipment.

As indicated in Appendix D-1, when the Poor Red's rooftop mechanical equipment is not operating, the ambient conditions at the nearest residences to the north are considerably lower. Therefore, provided the offsets to the County noise standards for elevated ambient conditions resulting from the Poor Red's rooftop mechanical equipment are appropriate, this analysis concludes that the sound levels generated by the proposed music activities would be satisfactory relative to those adjusted standards.

Conclusions & Recommendations

Project outdoor event music noise exposure is predicted to satisfy the applicable adjusted El Dorado County daytime and evening hourly average (L_{eq}) and maximum (L_{max}) noise level limits at the closest residential properties provided that music levels are limited to 75 dB at the reference distance of 50 feet in front of the speakers, and provided that the rooftop mechanical equipment at Poor Red's is in operation. Further, provided that all outdoor amplified music and speech associated with events on the property conclude by 10:00 p.m. (as proposed), and event sound

*Environmental Noise Assessment
Poor Red's BBQ Restaurant and Bar Outdoor Music Events
El Dorado (El Dorado County), California
Page 9*

EXHIBIT G - ENVIRONMENTAL NOISE ASSESSMENT

Bollard Acoustical Consultants, Inc. (BAC)

system speakers be oriented to face south (also as proposed), no additional consideration of outdoor event music noise mitigation measures would be warranted for the project. Lastly, it is recommended that restaurant management procure a sound level meter and limit the average and maximum sound output of the amplified music and speech to an average of 75 dB at a position of 50 feet in front of the speakers.

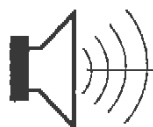
This concludes BAC's environmental noise assessment for the outdoor amplified music proposed at the Poor Red's BBQ Restaurant and Bar in El Dorado (El Dorado County). Please contact BAC at (916) 663-0500 or darioq@bacnoise.com with comments or questions regarding this evaluation.

EXHIBIT G - ENVIRONMENTAL NOISE ASSESSMENT

Appendix A

Acoustical Terminology

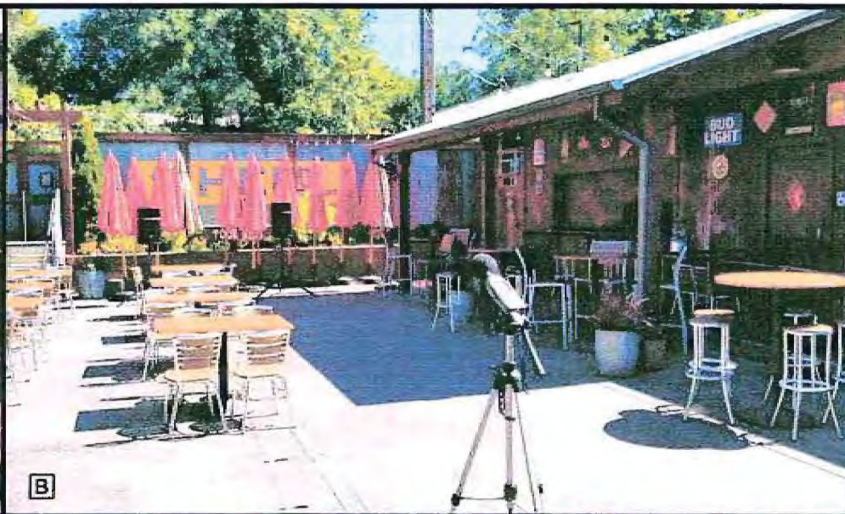
Acoustics	The science of sound.
Ambient Noise	The distinctive acoustical characteristics of a given space consisting of all noise sources audible at that location. In many cases, the term ambient is used to describe an existing or pre-project condition such as the setting in an environmental noise study.
Attenuation	The reduction of an acoustic signal.
A-Weighting	A frequency-response adjustment of a sound level meter that conditions the output signal to approximate human response.
Decibel or dB	Fundamental unit of sound, A Bell is defined as the logarithm of the ratio of the sound pressure squared over the reference pressure squared. A Decibel is one-tenth of a Bell.
CNEL	Community Noise Equivalent Level. Defined as the 24-hour average noise level with noise occurring during evening hours (7 - 10 p.m.) weighted by a factor of three and nighttime hours weighted by a factor of 10 prior to averaging.
Frequency	The measure of the rapidity of alterations of a periodic signal, expressed in cycles per second or hertz.
L_{dn}	Day/Night Average Sound Level. Similar to CNEL but with no evening weighting.
L_{eq}	Equivalent or energy-averaged sound level.
L_{max}	The highest root-mean-square (RMS) sound level measured over a given period of time.
Loudness	A subjective term for the sensation of the magnitude of sound.
Masking	The amount (or the process) by which the threshold of audibility is for one sound is raised by the presence of another (masking) sound.
Noise	Unwanted sound.
Peak Noise	The level corresponding to the highest (not RMS) sound pressure measured over a given period of time. This term is often confused with the Maximum level, which is the highest RMS level.
RT₆₀	The time it takes reverberant sound to decay by 60 dB once the source has been removed.
Sabin	The unit of sound absorption. One square foot of material absorbing 100% of incident sound has an absorption of 1 sabin.
SEL	A rating, in decibels, of a discrete event, such as an aircraft flyover or train passby, that compresses the total sound energy of the event into a 1-s time period.
Threshold of Hearing	The lowest sound that can be perceived by the human auditory system, generally considered to be 0 dB for persons with perfect hearing.
Threshold of Pain	Approximately 120 dB above the threshold of hearing.



BOLLARD

Acoustical Consultants

EXHIBIT G - ENVIRONMENTAL NOISE ASSESSMENT



Legend

- A** Speaker Orientation: 38°40'57.28"N, 120°50'49.56"W
- B** Reference Noise Level Measurement Location: 38°40'56.80"N, 120°50'49.67"W
- C** ST-1: 38°40'57.37"N, 120°50'50.42"W
- D** ST-2: 38°40'58.09"N, 120°50'50.08"W

Note: Short-term monitoring completed on July 24, 2019.

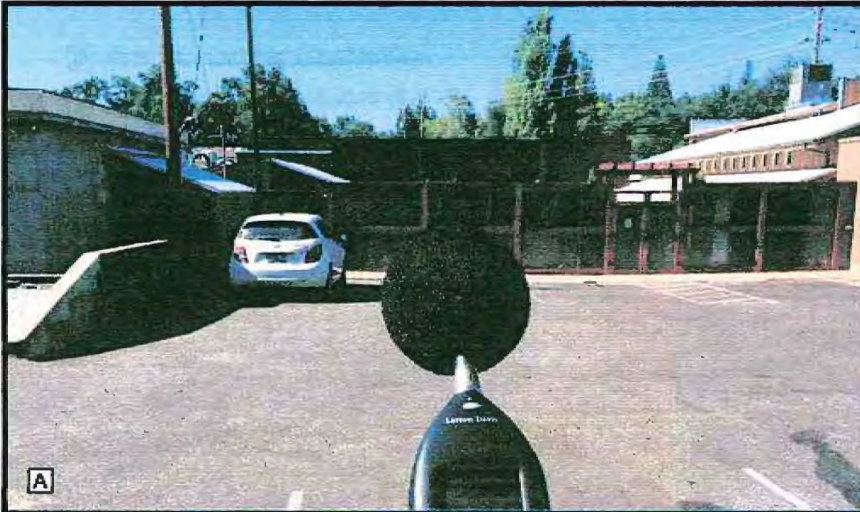
Poor Red's BBQ Restaurant and Bar
 Outdoor Music Events
 El Dorado County, California

Noise Survey Photographs

Appendix B-1



EXHIBIT G - ENVIRONMENTAL NOISE ASSESSMENT



Legend

- [A]** ST-3: 38°40'57.95"N, 120°50'49.27"W
- [B]** ST-4: 38°40'57.77"N, 120°50'48.21"W
- [C]** ST-5: 38°40'54.61"N, 120°50'49.45"W
- [D]** ST-6: 38°40'56.28"N, 120°50'52.13"W

Note: Short-term monitoring completed on July 24, 2019.

Poor Red's BBQ Restaurant and Bar
Outdoor Music Events
El Dorado County, California

Noise Survey Photographs

Appendix B-2



EXHIBIT G - ENVIRONMENTAL NOISE ASSESSMENT



Legend

- A** LT-1: 38°40'58.05"N, 120°50'49.40"W
- B** LT-1: 38°40'58.05"N, 120°50'49.40"W
- C** LT-2: 38°40'57.13"N, 120°50'51.70"W
- D** LT-2: 38°40'57.13"N, 120°50'51.70"W

Note: Long-Term noise monitoring completed on August 7, 2019.

Poor Red's BBQ Restaurant and Bar
 Outdoor Music Events
 El Dorado County, California

Noise Survey Photographs

Appendix B-3



**Appendix C-1
Ambient Noise Monitoring Results - Site LT-1
Poor Red's BBQ Restaurant and Bar Outdoor Music Events
8/7/19 - 8/8/19**

Hour	Leq	Lmax	L50	L90
12:00 PM	57	72	56	55
1:00 PM	57	71	57	56
2:00 PM	58	74	57	56
3:00 PM	57	74	57	56
4:00 PM	59	77	57	56
5:00 PM	69	101	57	56
6:00 PM	58	78	56	55
7:00 PM	58	79	57	56
8:00 PM	59	80	57	56
9:00 PM	57	72	56	55
10:00 PM	55	80	47	44
11:00 PM	47	67	44	42
12:00 AM	47	71	44	41
1:00 AM	48	74	43	41
2:00 AM	45	69	43	41
3:00 AM	45	60	43	40
4:00 AM	45	62	43	40
5:00 AM	67	91	47	43
6:00 AM	50	74	48	44
7:00 AM	54	77	50	46
8:00 AM	57	78	51	48
9:00 AM	58	79	56	55
10:00 AM	58	75	56	54
11:00 AM	61	81	56	55

	Statistical Summary					
	Daytime (7 a.m. - 10 p.m.)			Nighttime (10 p.m. - 7 a.m.)		
	High	Low	Average	High	Low	Average
Leq (Average)	69	54	61	67	45	58
Lmax (Maximum)	101	71	78	91	60	72
L50 (Median)	57	50	56	48	43	44
L90 (Background)	56	46	54	44	40	42

Computed Ldn, dB	65
% Daytime Energy	73%
% Nighttime Energy	27%

GPS Coordinates	38°40'58.00"N
	120°50'50.07"W

Note: Noise meter located along the northern project property line.



**Appendix C-2
Ambient Noise Monitoring Results - Site LT-1
Poor Red's BBQ Restaurant and Bar Outdoor Music Events
8/8/19 - 8/9/19**

Hour	Leq	Lmax	L50	L90
12:00 PM	57	74	56	55
1:00 PM	58	75	57	55
2:00 PM	57	69	56	55
3:00 PM	57	68	57	56
4:00 PM	58	78	57	56
5:00 PM	58	73	56	55
6:00 PM	57	76	56	55
7:00 PM	57	72	56	55
8:00 PM	57	70	56	54
9:00 PM	57	74	56	55
10:00 PM	58	77	56	55
11:00 PM	55	68	55	55
12:00 AM	56	69	56	55
1:00 AM	55	58	55	55
2:00 AM	55	64	55	55
3:00 AM	64	86	55	55
4:00 AM	55	62	55	55
5:00 AM	56	69	56	55
6:00 AM	68	82	56	55
7:00 AM	56	69	56	55
8:00 AM	57	73	56	55
9:00 AM	61	78	56	55
10:00 AM	57	74	55	54
11:00 AM	56	72	55	54

Statistical Summary						
	Daytime (7 a.m. - 10 p.m.)			Nighttime (10 p.m. - 7 a.m.)		
	High	Low	Average	High	Low	Average
Leq (Average)	61	56	57	68	55	61
Lmax (Maximum)	78	68	73	86	58	71
L50 (Median)	57	55	56	56	55	56
L90 (Background)	56	54	55	55	55	55

Computed Ldn, dB	67
% Daytime Energy	41%
% Nighttime Energy	59%

GPS Coordinates	38°40'58.00"N
	120°50'50.07"W

Note: Noise meter located along the northern project property line.

**Appendix C-3
Ambient Noise Monitoring Results - Site LT-2
Poor Red's BBQ Restaurant and Bar Outdoor Music Events
8/7/19 - 8/8/19**

Hour	Leq	Lmax	L50	L90
1:00 PM	61	77	58	52
2:00 PM	65	87	60	54
3:00 PM	62	88	58	52
4:00 PM	62	80	59	54
5:00 PM	63	89	59	54
6:00 PM	64	92	59	51
7:00 PM	61	86	54	48
8:00 PM	59	83	54	48
9:00 PM	59	83	51	46
10:00 PM	60	88	47	43
11:00 PM	58	83	45	41
12:00 AM	61	93	39	36
1:00 AM	50	70	39	36
2:00 AM	50	71	38	34
3:00 AM	63	85	38	33
4:00 AM	60	85	45	35
5:00 AM	66	85	57	44
6:00 AM	65	87	59	47
7:00 AM	67	88	63	54
8:00 AM	69	88	66	60
9:00 AM	66	86	64	57
10:00 AM	71	98	61	54
11:00 AM	69	100	60	52
12:00 PM	63	82	60	52

	Statistical Summary					
	Daytime (7 a.m. - 10 p.m.)			Nighttime (10 p.m. - 7 a.m.)		
	High	Low	Average	High	Low	Average
Leq (Average)	71	59	65	66	50	62
Lmax (Maximum)	100	77	87	93	70	83
L50 (Median)	66	51	59	59	38	45
L90 (Background)	60	46	53	47	33	39

Computed Ldn, dB	69
% Daytime Energy	80%
% Nighttime Energy	20%

GPS Coordinates	38°40'57.14"N
	120°50'51.70"W

Note: Noise meter located in the yard of 6211 Pleasant Valley Road.



Appendix C-4
Ambient Noise Monitoring Results - Site LT-2
Poor Red's BBQ Restaurant and Bar Outdoor Music Events
8/8/19 - 8/9/19

Hour	Leq	Lmax	L50	L90
1:00 PM	69	97	60	52
2:00 PM	62	78	59	52
3:00 PM	66	85	62	57
4:00 PM	63	81	60	55
5:00 PM	63	86	59	54
6:00 PM	61	82	56	50
7:00 PM	60	83	54	48
8:00 PM	60	84	53	46
9:00 PM	62	92	52	47
10:00 PM	60	88	48	44
11:00 PM	56	82	46	44
12:00 AM	53	73	44	43
1:00 AM	53	77	44	42
2:00 AM	50	75	44	42
3:00 AM	57	84	44	43
4:00 AM	59	77	46	43
5:00 AM	65	88	55	45
6:00 AM	65	84	61	49
7:00 AM	66	89	62	53
8:00 AM	65	89	61	52
9:00 AM	67	93	62	53
10:00 AM	63	84	59	51
11:00 AM	61	80	57	49
12:00 PM	63	85	58	51

	Statistical Summary					
	Daytime (7 a.m. - 10 p.m.)			Nighttime (10 p.m. - 7 a.m.)		
	High	Low	Average	High	Low	Average
Leq (Average)	69	60	64	65	50	60
Lmax (Maximum)	97	78	86	88	73	81
L50 (Median)	62	52	58	61	44	48
L90 (Background)	57	46	51	49	42	44

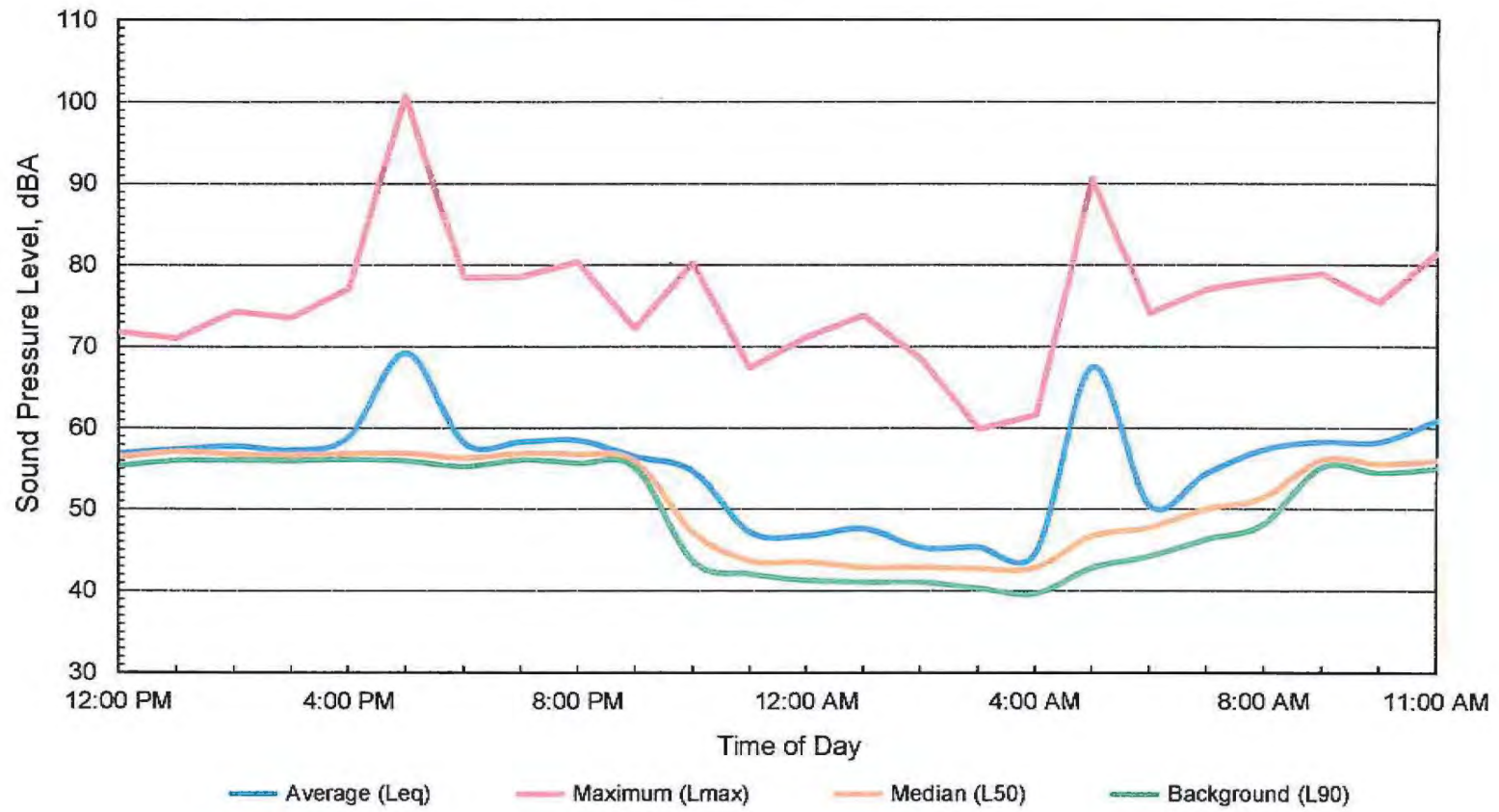
Computed Ldn, dB	67
% Daytime Energy	81%
% Nighttime Energy	19%

GPS Coordinates	38°40'57.14"N
	120°50'51.70"W

Note: Noise meter located in the yard of 6211 Pleasant Valley Road.



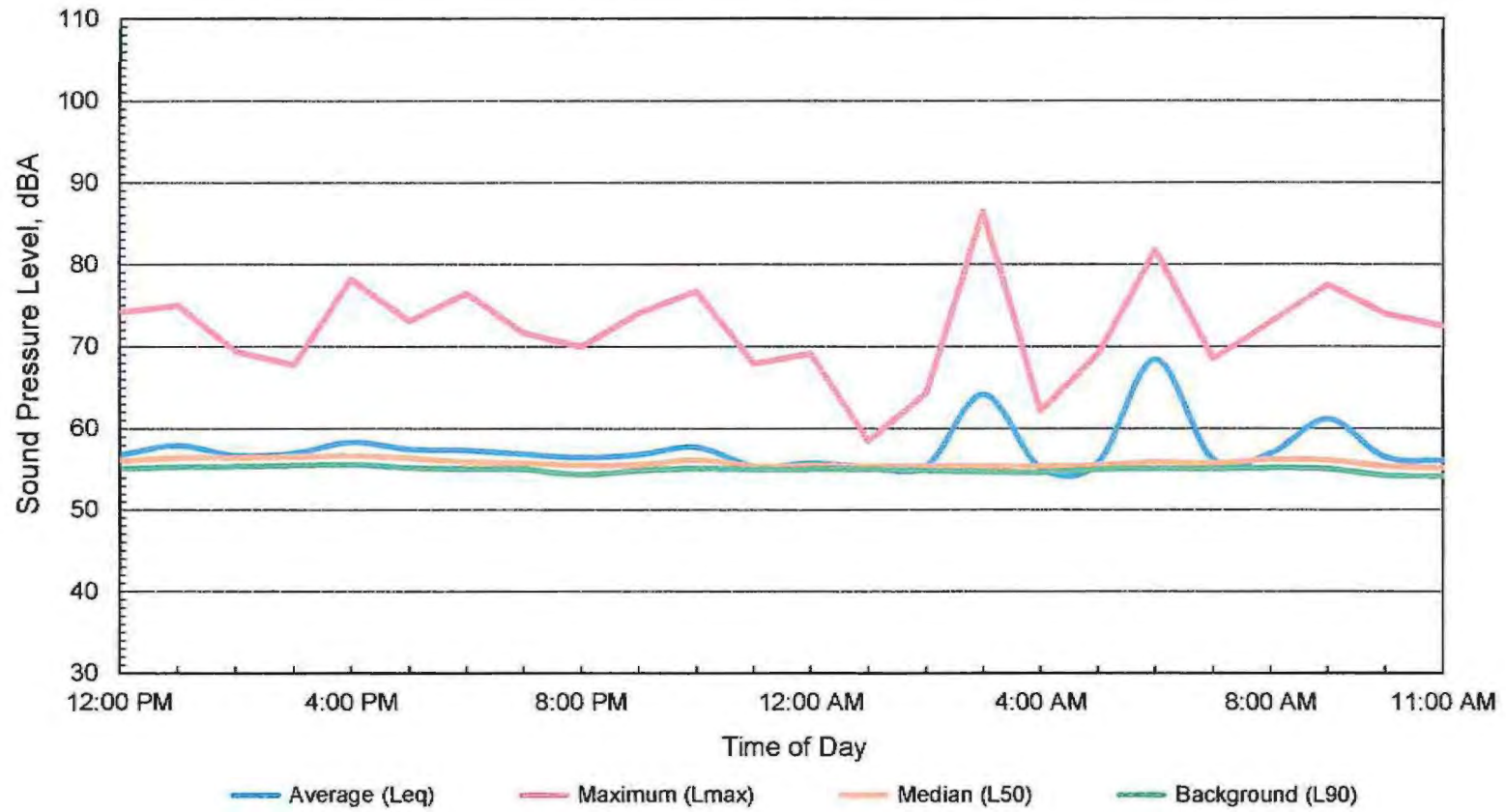
Appendix D-1
Ambient Noise Monitoring Results - Site LT-1
Poor Red's BBQ Restaurant and Bar Outdoor Music Events
8/7/19 - 8/8/19



Computed Ldn = 65 dB



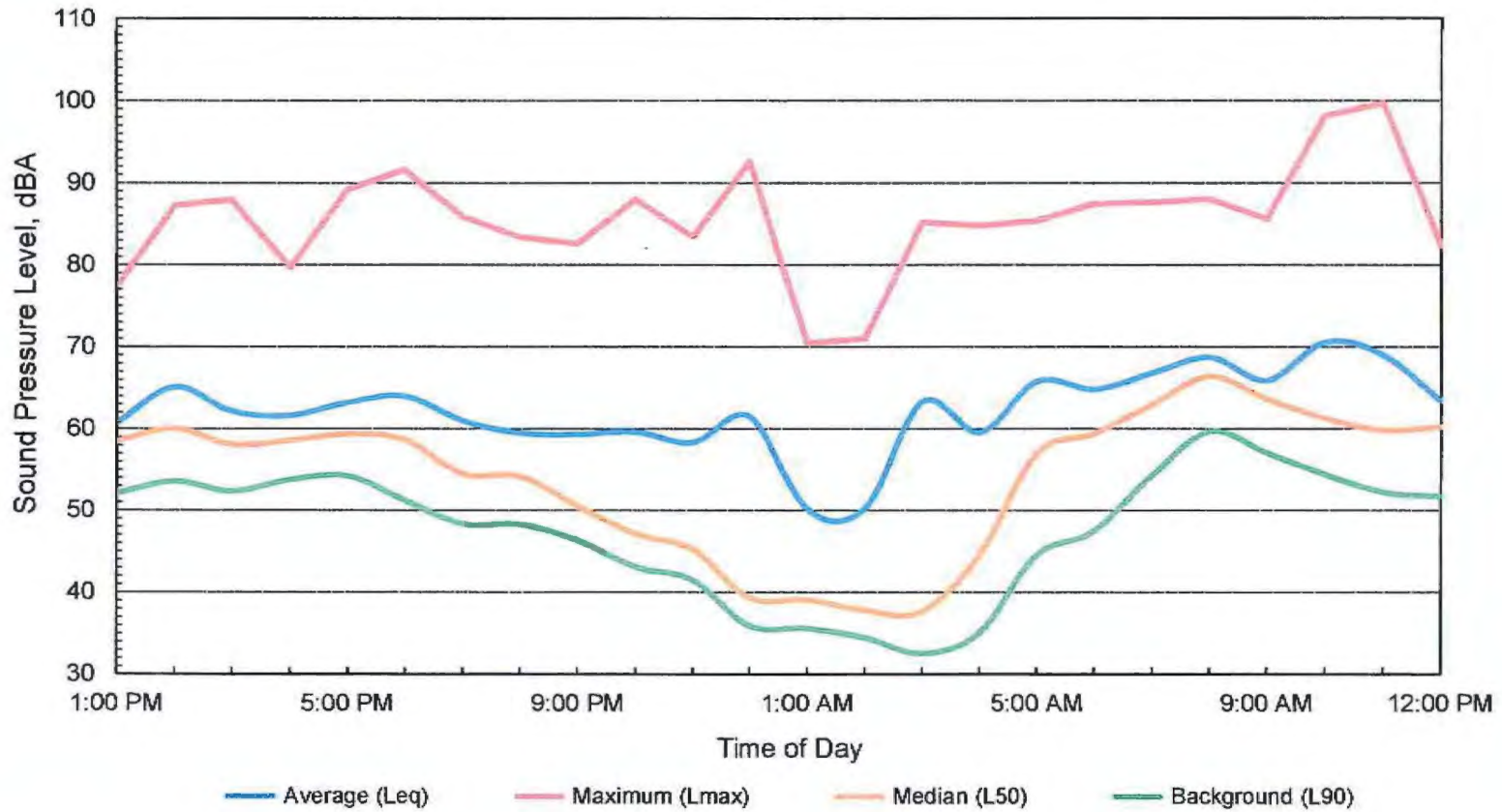
Appendix D-2
Ambient Noise Monitoring Results - Site LT-1
Poor Red's BBQ Restaurant and Bar Outdoor Music Events
8/8/19 - 8/9/19



Computed Ldn = 67 dB



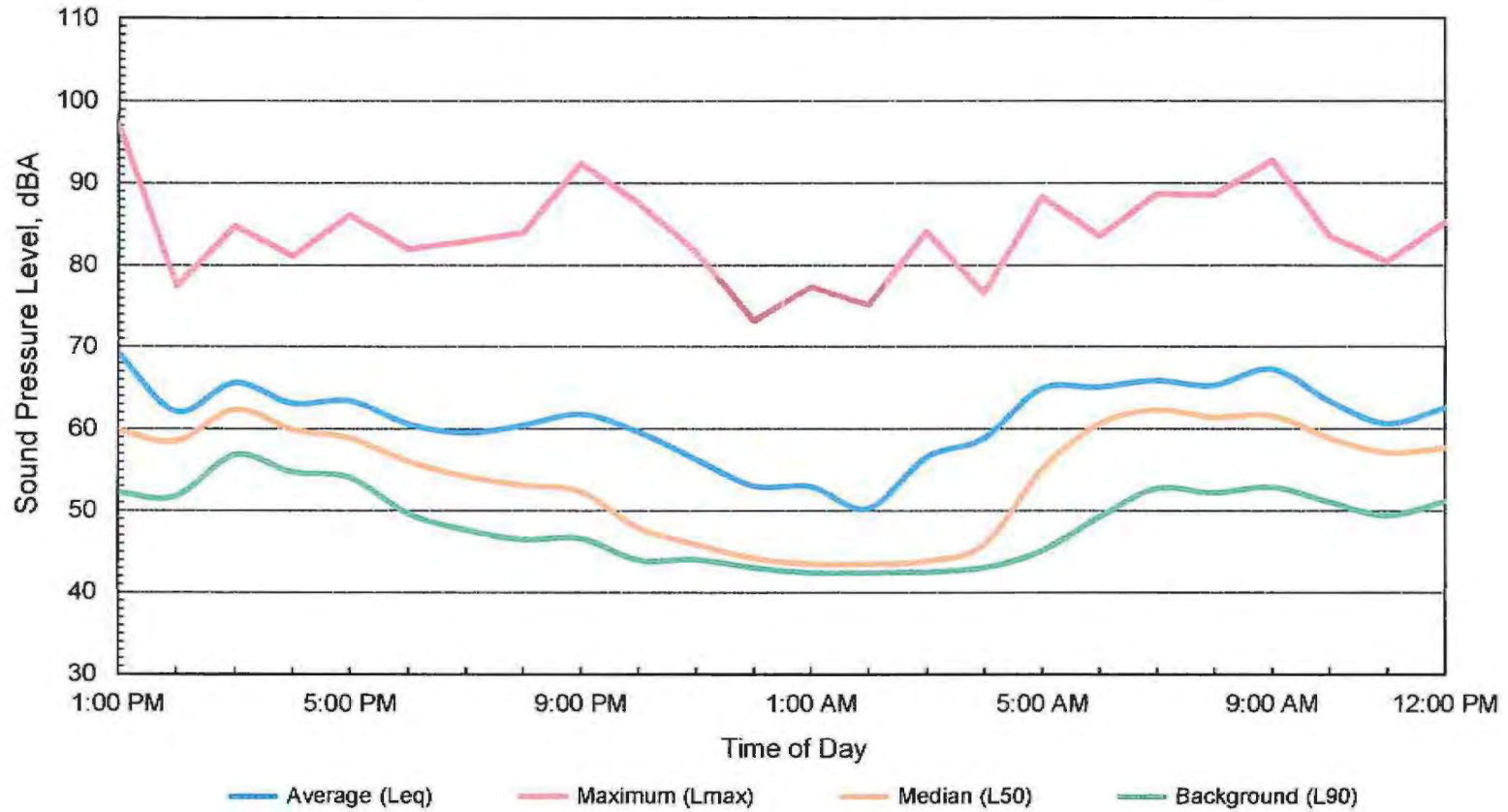
Appendix D-3
Ambient Noise Monitoring Results - Site LT-2
Poor Red's BBQ Restaurant and Bar Outdoor Music Events
8/7/19 - 8/8/19



Computed Ldn = 69 dB



Appendix D-4
Ambient Noise Monitoring Results - Site LT-2
Poor Red's BBQ Restaurant and Bar Outdoor Music Events
8/8/19 - 8/9/19



Computed Ldn = 67 dB



EXHIBIT H
DIAMOND SPRINGS AND EL DORADO
COMMUNITY ADVISORY COMMITTEE COMMENTS



Committee Members

Carl Hillendahl
Larry Patterson
Randy Pesses
Bob Smart
Meredith Stirling
Chris Whitaker
Maria Samaniego-Taylor

DIAMOND SPRINGS AND EL DORADO
COMMUNITY
ADVISORY COMMITTEE

Diamond Springs Fire Station
501 Main Street
Diamond Springs, CA 95619

AGENDA
January 16, 2020

PLACE: Diamond Springs Fire Station
501 Main Street
Diamond Springs, CA 95916

TIME: 6 P.M.

POSTED: 01-10-2020

For purposes of the Brown Act (Government Code Section 54954.2 (a)), the numbered items on this agenda give a brief general description of each item of business to be transacted or discussed.

ROLL CALL

FLAG SALUTE

ADOPT AGENDA

APPROVE 11-21-19 DRAFT MINUTES-Attachment 1

OPEN FORUM

Public testimony will be received on each agenda item as it is called. Matters not on the agenda may be addressed by the general public during the Open Forum. Public comments during Open Forum are limited to three minutes per person. The Committee reserves the right to waive said rules by majority vote.

CORRESPONDENCE:

None

**EXHIBIT H
DIAMOND SPRINGS AND EL DORADO
COMMUNITY ADVISORY COMMITTEE COMMENTS**

Topics:

1. Selection of Committee Chair, Vice-Chair, and Secretary for 2020

2. Consideration of a proposed Conditional Use Permit (CUP19-0010 – Poor Reds Live Music) which is a request for a conditional use permit to allow up to 35 live music events per year, from March to November, in the existing semi-enclosed outdoor patio. Amplified music for each event would be limited to the hours of 6:00 pm to 10:00 pm on weekdays, and 12:00pm to 10:00pm on weekends and holidays. A presentation of the project will be made by Tom Purciel of the County Planning Dept.

3. Consideration of a proposal by Walmart (PD-R19-0002) to install ground-mount photovoltaic solar arrays as parking coverage. A presentation of the project will be provided by Mel Pabalinas of the County Planning Dept.

Coming Events:

None

Committee Reports: None

Adjourn

EXHIBIT H
DIAMOND SPRINGS AND EL DORADO
COMMUNITY ADVISORY COMMITTEE COMMENTS



DIAMOND SPRINGS AND EL DORADO
COMMUNITY
ADVISORY COMMITTEE

Mr. Tom Purciel, County Planning Department
2850 Fairlane Ct
Placerville, CA 95667

January 17, 2020

Re: CUP19-0010 – Poor Red’s Live Music

Dear Mr. Purciel;

At last night’s meeting, the Community Advisory Committee considered the subject application for live music events to be held at Poor Red’s barbecue in downtown El Dorado. Our Committee voted unanimously to support the proposed project, as we feel it will help to renew vitality to the commercial district of El Dorado, and that there has been no concern expressed by nearby residents that they would object to the sound volumes or timing associated with live music events. Also, The Committee feels that the restaurant of Poor Red’s has been such an iconic landmark in El Dorado and such an asset to the community for so many decades that we continue to support measures that will help to make this enterprise a continuing success.

One concern was raised by a member of the community concerning the overall safety of the pedestrian crosswalk directly in front of Poor Red’s. While we recognize the fact that this crosswalk is properly striped, and located, and that it occurs a fully stop controlled intersection, there is concern that on dark nights pedestrians, (especially distracted pedestrians) could be vulnerable to being hit in the crosswalk by a passing vehicle.

On eastbound Pleasant Valley Rd, the stop bar is directly at the crosswalk, so anyone running the crosswalk is also running a stop sign. But westbound traffic on Pleasant Valley Rd, and northbound traffic on Hwy 49, turning west onto Pleasant Valley Rd, after having stopped at their stop sign, could become distracted and inadvertently collide with a pedestrian in the crosswalk. This occurrence may

EXHIBIT H
DIAMOND SPRINGS AND EL DORADO
COMMUNITY ADVISORY COMMITTEE COMMENTS

never have occurred in this past, but we recommend that DOT investigate the circumstance, and if warranted, a flexible “YIELD TO PEDESTRIANS IN CROSSWALK” sign be placed at the center of the road at the east edge of the crosswalk. Thank you for the opportunity to comment on this project. I’m sure we all look forward to a summer evening of barbecued ribs, and live music at Poor Red’s.

Sincerely,

Randy Pesses, Chairman



Tom Purciel <tom.purciel@edcgov.us>

Project for Review & Comment - CUP19-0010 – POOR REDS LIVE MUSIC

Dave Spiegelberg <dave.spiegelberg@edcgov.us>
To: Tom Purciel <tom.purciel@edcgov.us>

Wed, Feb 26, 2020 at 1:58 PM

The County Transportation Department (DOT) has reviewed the ED-DS CAC comments (submitted January 17, 2020) concerning intersection safety. DOT staff is unable to place the suggested "YIELD TO PEDESTRIANS IN CROSSWALK" sign because such signs are not sanctioned by the California Manual on Uniform Traffic Control Devices (CAMUTCD). It was suggested by the DOT Traffic Superintendent that increased lighting levels at the crosswalk and intersection would be the most effective means of increasing pedestrian safety.

DOT requested the applicant to have an electrician measure the light levels in "lux" across the crosswalk at night. The readings varied from approximately 0.6 lux on the Poor Red's side, and approximately 0.15 lux at the south end of the crosswalk. Caltrans recommends light levels (from street lighting) of 1.6 lux at all points in the crosswalk in urban areas, and 1.1 lux in rural areas.

DOT reviewed County and Caltrans accident data and discovered no pedestrian accidents at this crosswalk. There was a fatal pedestrian / vehicle accident to the west, on Main Street, in 2015. It involved an elderly person at approximately 9:30am.

DOT has chosen not to require Poor Reds to improve the lighting at this crosswalk. First, this is an existing problem within Caltrans Right of Way, so the nexus to Poor Reds current application does not exist. Secondly, the addition of live music does not increase either the service capacity of the restaurant, nor the occupant capacity of the building. Lastly, the accident data does not show any problem at this location.

DOT has referred this matter to Caltrans District 3 Traffic Operations.

Dave W. Spiegelberg, P.E.
Senior Civil Engineer

County of El Dorado
Community Development
Department of Transportation, Development Section
2850 Fairlane Court
Placerville, CA 95667
530-621-6077 / 530-957-3521 (cell) / 530-295-2655 (fax)
dave.spiegelberg@edcgov.us

[Quoted text hidden]

EXHIBIT I

DOT RESPONSE TO COMMENTS FROM THE DIAMOND SPRINGS AND EL DORADO CAC

20-0411 D 34 of 48



EXHIBIT J - PREVIOUS TEMPORARY USE PERMITS
COMMUNITY DEVELOPMENT SERVICES
PLANNING AND BUILDING DEPARTMENT

<http://www.edcgov.us/DevServices/>

PLACERVILLE OFFICE:

2850 Fairlane Court, Placerville, CA 95667

BUILDING

(530) 621-5315 / (530) 622-1708 Fax

bldddept@edcgov.us

PLANNING

(530) 621-5355 / (530) 642-0508 Fax

planning@edcgov.us

LAKE TAHOE OFFICE:

3368 Lake Tahoe Blvd., Suite 302

South Lake Tahoe, CA 96150

(530) 573-3330

(530) 542-9082 Fax

tahoebuild@edcgov.us

March 9, 2018

Poor Red's BBQ
Steve Anderly
6221 Pleasant Valley Rd.
El Dorado, CA 95623

RE: Temporary Use Permit TUP 18-0004
Poor Red's BBQ Outdoor Live Music
APN: 331-113-13

Dear Mr. Anderly:

El Dorado County Planning Services has completed the review of Temporary Use Permit Application TUP18-0004 and **approves** the proposed project subject to the following conditions and based on the approved site plan (see attached):

FINDINGS FOR APPROVAL

Based on the review and analysis of this project by staff and affected agencies, and supported by evidence in the record, the following findings can be made:

1.0 ADMINISTRATIVE FINDINGS

- 1.1 Pursuant to 130.52.060 of the El Dorado County Code, Planning Services has determined that, as conditioned, the proposed project as described below would not be detrimental to public health and safety. Further, the use is allowed within the Commercial, Main Street (CM) Zone Districts pursuant to Section 130.22.020 which allows Special Events with an approved Temporary Use Permit.
- 1.2 The Temporary Use Permit is consistent with applicable General Plan policies including 2.2.5.21 (Compatibility with surrounding uses), and 10.1.6.1 (promotion of local businesses). As a temporary use, the project is compatible with the General Plan as conditions have been added to minimize short-term noise, emergency access capability, and traffic.

EXHIBIT J - PREVIOUS TEMPORARY USE PERMITS

Poor Red's BBQ/Live Music Events
Approval Letter; Temporary Use Permit (TUP 18-0004)
March 9, 2018
Page 2 of 3

2.0 ENVIRONMENTAL REVIEW

The proposed project is exempt from CEQA pursuant to Section 15304(e) (Minor temporary use of land having negligible or no permanent effects on the environment) in that the Poor Red's BBQ's events will not result in significant land use changes, are of short duration, uses existing developed facilities, and the current zoning designation authorizes such temporary events by means of this Temporary Use Permit.

CONDITIONS OF APPROVAL

1. This Temporary Use Permit is based upon and limited to compliance with the project description and submitted site plan and conditions of approval set forth below and found in the attached approval packet. Any deviations from the project description, exhibits, or conditions must be reviewed and approved by the County for conformity with this approval. Deviations may require approved changes to the permit and/or further environmental review. Deviations without the above described approval will constitute a violation of permit approval. The project description is as follows:

Temporary Use Permit TUP18-0004 is for a series of special events to include outdoor live music. The events will take place at Poor Red's BBQ within the existing outdoor patio which is currently approved for outdoor uses as a restaurant and bar (See attached site plans). The events will commence on March 11, April 21, May 13, June 9, and June 17, 2018. The outdoor live music will occur from 1:00 P.M. to 9:00 P.M.

2. Noise levels shall not exceed those allowed in Table 130.37.060.1 of the El Dorado County Zoning Code for non-transportation related noise sources within the Community Regions, as follows:

	Daytime (7am-7pm)	Evening (7pm-10pm)	Night (10pm-7am)
Hourly dB	55	50	45
Max. dB	70	60	55

3. Decibel readings shall be taken hourly at all four property lines during the live music performances. These readings shall be forwarded to Planning for review before the next event takes place. If noise levels have been exceeded then the applicant shall prepare a plan to modify the amplification in order to meet Table 130.37.060.1 of the El Dorado County Zoning Code. If the next event has decibel levels that exceed Table 130.37.060.1 then the applicant shall submit a noise study prepared by an acoustical engineer. This study shall be reviewed by Planning and future events may only take place if the study states that compliance can be achieved. Failure to comply with sound system levels shall result in termination of the events for the duration of the period approved under the use permit and a moratorium on future events for the applicant or the property owner of two calendar years from the date of non-compliance.

EXHIBIT J - PREVIOUS TEMPORARY USE PERMITS

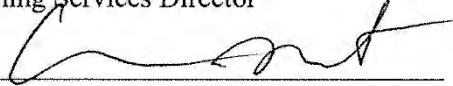
Poor Red's BBQ/Live Music Events
Approval Letter; Temporary Use Permit (TUP 18-0004)
March 9, 2018
Page 3 of 3

4. Speakers shall be directed away from the northern property line beyond which contains the closest residences.
5. Any signage and temporary materials shall be properly maintained and safely secured at all times. No signage or other event materials shall be located within the public right-of-way. All signage shall be consistent with the authorizations and development standards found in Chapter 130.16.050 (Temporary Signs).
6. At no time shall the event cause traffic entering or exiting the event to disrupt normal traffic flow. Event staff shall be onsite during the duration of the event to direct parking and pedestrian traffic if an issue arises.
7. All materials used in connection with or resulting from the event shall be removed no later than three days after each event and the expiration of the temporary use permit.
8. Occupancy shall not exceed the limits established by the Diamond Springs - El Dorado Fire Protection District.

If you have any questions please contact the project planner, Aaron Mount, at (530) 621-5345 or aaron.mount@edcgov.us.

Sincerely,

ROGER P. TROUT
Planning Services Director

By: 
Aaron Mount
Associate Planner, Planning Services

Attachment (2; 5 pages total): Approved Application Packet Plan (6 pages)

cc: BOS District III
El Dorado County Sheriff's Office
Diamond Springs - El Dorado Fire Protection District
Roger Trout, Planning Services Director
Rommel Pabalinas, Principal Planner
File, TUP18-0004

2/28/2018

EXHIBIT J - PREVIOUS TEMPORARY USE PERMITS

Maximum occupancy is 125, but I don't think we have ever had that many people out there.



Steve Anderly
Sent from my iPhone
[Quoted text hidden]

[Quoted text hidden]

WARNING: This email and any attachments may contain private, confidential, and privileged material for the sole use of the intended recipient. Any review, copying, or distribution of this email (or any attachments) by other than the intended recipient is strictly prohibited. If you are not the intended contact the sender immediately and permanently delete the original and any copies of this email and any attachments.

EXHIBIT J - PREVIOUS TEMPORARY USE PERMITS

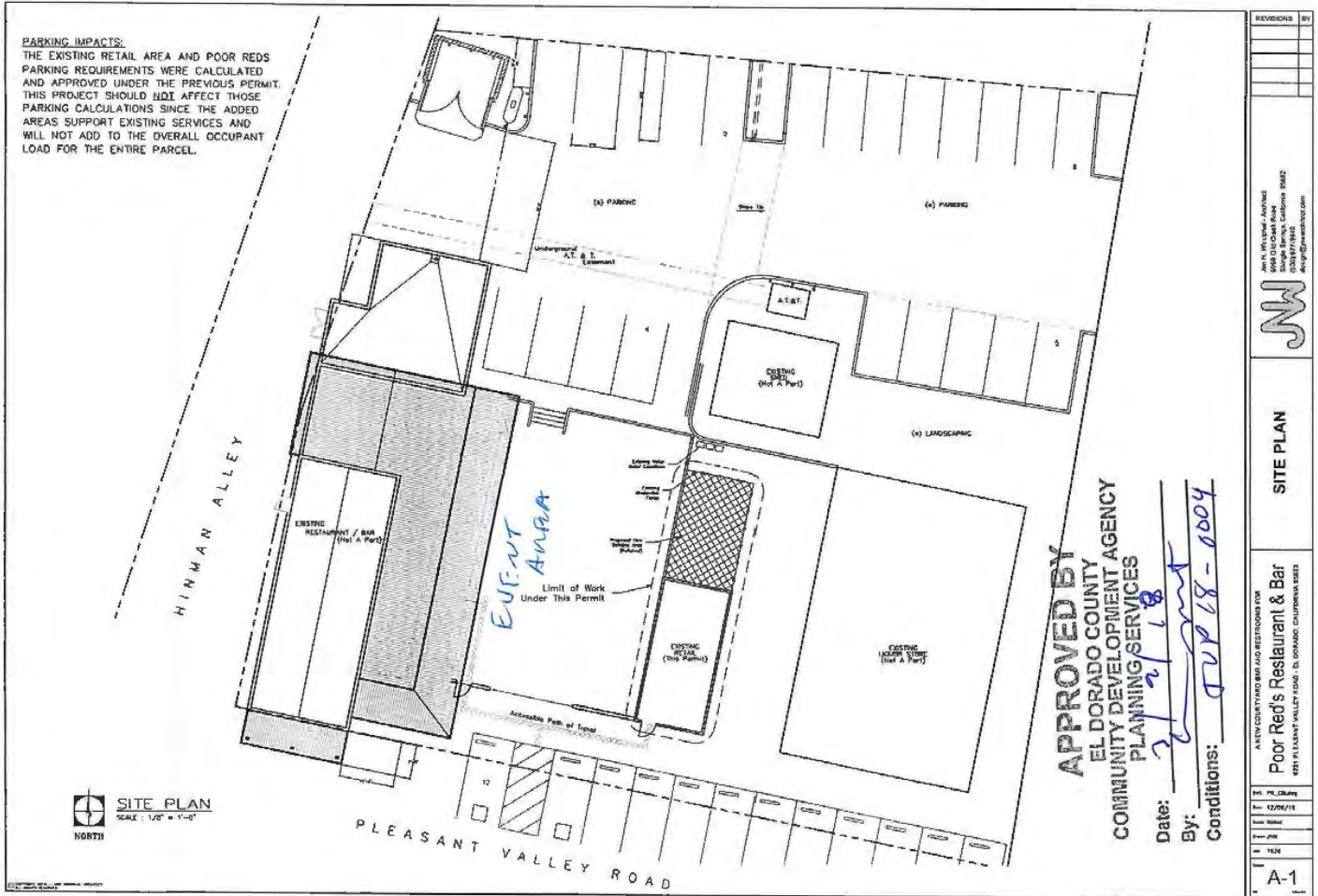


EXHIBIT J - PREVIOUS TEMPORARY USE PERMITS



COMMUNITY DEVELOPMENT SERVICES PLANNING AND BUILDING DEPARTMENT Planning Services Division, Current Planning Unit

<http://www.edcgov.us/DevServices/>

PLACERVILLE OFFICE:

2850 Fairlane Court, Placerville, CA 95667

BUILDING

(530) 621-5315 / (530) 622-1708 Fax

bldgdept@edcgov.us

PLANNING

(530) 621-5355 / (530) 642-0508 Fax

planning@edcgov.us

LAKE TAHOE OFFICE:

924 B Emerald Bay Rd

South Lake Tahoe, CA 96150

(530) 573-3330

(530) 542-9082 Fax

March 27, 2019

Poor Red's BBQ
Jeff Genovese
6221 Pleasant Valley Rd.
El Dorado, CA 95623

**RE: Temporary Use Permit TUP19-0003
Poor Red's BBQ Outdoor Live Music
APN: 331-113-13**

Dear Mr. Genovese:

El Dorado County Planning Services has completed the review of Temporary Use Permit Application TUP19-0003 and **approves** the proposed project subject to the following conditions and based on the approved site plan (see attached):

FINDINGS FOR APPROVAL

Based on the review and analysis of this project by staff and affected agencies, and supported by evidence in the record, the following findings can be made:

1.0 ADMINISTRATIVE FINDINGS

- 1.1 Pursuant to 130.52.060 of the El Dorado County Code, Planning Services has determined that, as conditioned, the proposed project as described below would not be detrimental to public health and safety. Further, the use is allowed within the Commercial, Main Street (CM) Zone Districts pursuant to Section 130.22.020 which allows Special Events with an approved Temporary Use Permit.
- 1.2 The Temporary Use Permit is consistent with applicable General Plan policies including 2.2.5.21 (Compatibility with surrounding uses), and 10.1.6.1 (promotion of local businesses). As a temporary use, the project is compatible with the General Plan as conditions have been added to minimize short-term noise, emergency access capability, and traffic.

EXHIBIT J - PREVIOUS TEMPORARY USE PERMITS

Poor Red's BBQ/Live Music Events
Approval Letter; Temporary Use Permit (TUP19-0003)
March 27, 2019
Page 2 of 3

2.0 ENVIRONMENTAL REVIEW

The proposed project is exempt from CEQA pursuant to Section 15304(e) (Minor temporary use of land having negligible or no permanent effects on the environment) in that the Poor Red's BBQ's events will not result in significant land use changes, are of short duration, uses existing developed facilities, and the current zoning designation authorizes such temporary events by means of this Temporary Use Permit.

CONDITIONS OF APPROVAL

1. This Temporary Use Permit is based upon and limited to compliance with the project description and submitted site plan and conditions of approval set forth below and found in the attached approval packet. Any deviations from the project description, exhibits, or conditions must be reviewed and approved by the County for conformity with this approval. Deviations may require approved changes to the permit and/or further environmental review. Deviations without the above described approval will constitute a violation of permit approval. The project description is as follows:

Temporary Use Permit TUP19-0003 is for a series of special events to include outdoor live music. The events will take place at Poor Red's BBQ within the existing outdoor patio which is currently approved for outdoor uses as a restaurant and bar (See attached site plans). The events will commence on April 21, May 5, May 12, June 16, September 1 and October 12. The outdoor live music will occur from 10:00 A.M. to 10:00 P.M.

2. Noise levels shall not exceed those allowed in Table 130.37.060.1 of the El Dorado County Zoning Code for non-transportation related noise sources within the Community Regions, as follows:

	Daytime (7am-7pm)	Evening (7pm-10pm)	Night (10pm-7am)
Hourly dB	55	50	45
Max. dB	70	60	55

3. Decibel readings shall be taken hourly at all four property lines during the live music performances. These readings shall be forwarded to Planning for review before the next event takes place. If noise levels have been exceeded then the applicant shall prepare a plan to modify the amplification in order to meet Table 130.37.060.1 of the El Dorado County Zoning Code. If the next event has decibel levels that exceed Table 130.37.060.1 then the applicant shall submit a noise study prepared by an acoustical engineer. This study shall be reviewed by Planning and future events may only take place if the study states that compliance can be achieved. Failure to comply with sound system levels shall result in termination of the events for the duration of the period approved under the use

EXHIBIT J - PREVIOUS TEMPORARY USE PERMITS

Poor Red's BBQ/Live Music Events
Approval Letter; Temporary Use Permit (TUP19-0003)
March 27, 2019
Page 3 of 3


permit and a moratorium on future events for the applicant or the property owner of two calendar years from the date of non-compliance.

4. Speakers shall be directed away from the northern property line beyond which contains the closest residences.
5. Any signage and temporary materials shall be properly maintained and safely secured at all times. No signage or other event materials shall be located within the public right-of-way. All signage shall be consistent with the authorizations and development standards found in Chapter 130.16.050 (Temporary Signs).
6. At no time shall the event cause traffic entering or exiting the event to disrupt normal traffic flow. Event staff shall be onsite during the duration of the event to direct parking and pedestrian traffic if an issue arises.
7. All materials used in connection with or resulting from the event shall be removed no later than three days after each event and the expiration of the temporary use permit.
8. Occupancy shall not exceed the limits established by the Diamond Springs - El Dorado Fire Protection District.

If you have any questions please contact the project planner, Melanie Shasha, at (530) 621-5355 or Melanie.shasha@edcgov.us.

Sincerely,

TIFFANY SCHMID
Planning Services Director

By: 
Melanie Shasha
Associate Planner, Planning Services

Attachment (3; 6 pages total): Approved Application Packet Plan (4 pages)

cc: BOS District III
El Dorado County Sheriff's Office
Diamond Springs - El Dorado Fire Protection District
Tiffany Schmid, Planning Services Director
Robert Peters, Principal Planner
File, TUP19-0003

EXHIBIT K - ADJACENT PROPERTY OWNER LETTERS

Community Development Services
Planning and Building Department
2850 Fairlane Court
Placerville, CA 95667

To Whom It May Concern:

The ownership and management of Poor Reds restaurant has informed me of their plans to have live music outdoors on their patio. I am not opposed to Poor Reds obtaining a conditional use permit for live music on their patio.

I reside at 6240 North St., El Dorado, CA
Street Address

Marie Rawlin
Printed Name

Marie Rawlin 9-25th
Signature Date

(530) 295-3709
Contact Phone Number

331-113-011
Parcel Number

CUP19-0010

EXHIBIT K - ADJACENT PROPERTY OWNER LETTERS

Community Development Services
Planning and Building Department
2850 Fairlane Court
Placerville, CA 95667

To Whom It May Concern:

The ownership and management of Poor Reds restaurant has informed me of their plans to have live music outdoors on their patio. I am not opposed to Poor Reds obtaining a conditional use permit for live music on their patio.

I reside at 6231 Pleasant Valley Rd, El Dorado, CA
Street Address

4262 Missouri St
4265 Missouri St

GAIL HARTWICK
Printed Name OWNER

Gail Hartwick
Signature

9/24/19
Date

530-409-6815
Contact Phone Number

331-113-004
Parcel Number

CUP19-0010

EXHIBIT K - ADJACENT PROPERTY OWNER LETTERS

Community Development Services
Planning and Building Department
2850 Fairlane Court
Placerville, CA 95667

To Whom It May Concern:

The ownership and management of Poor Reds restaurant has informed me of their plans to have live music outdoors on their patio. I am not opposed to Poor Reds obtaining a conditional use permit for live music on their patio.

I reside at 6220 North Street, El Dorado, CA
Street Address

April Covington
Printed Name

April Covington
Signature

9-25-19
Date

530-309-2034
Contact Phone Number

331-112-009
Parcel Number

CUP19-0010

EXHIBIT K - ADJACENT PROPERTY OWNER LETTERS

Community Development Services
Planning and Building Department
2850 Fairlane Court
Placerville, CA 95667

To Whom It May Concern:

The ownership and management of Poor Reds restaurant has informed me of their plans to have live music outdoors on their patio. I am not opposed to Poor Reds obtaining a conditional use permit for live music on their patio.

I reside at 6215 Pleasant Valley Rd, El Dorado, CA
Street Address

Jaymee Aldridge
Printed Name

Jaymee Aldridge
Signature

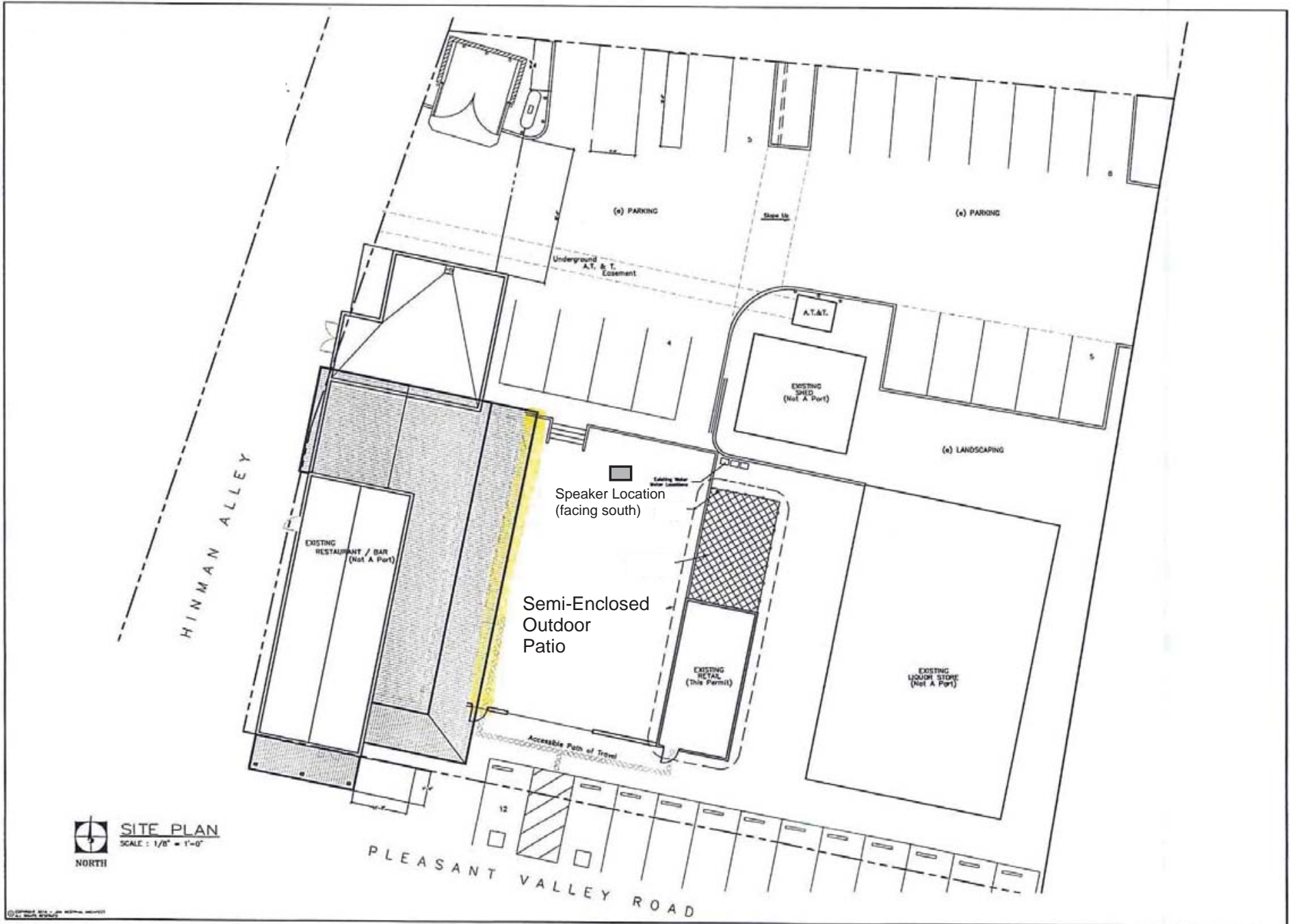
09/25/2019
Date

530-417-0794
Contact Phone Number

331-112-009
Parcel Number

CUP19-0010

EXHIBIT L - SITE PLAN



REVISIONS	BY

Jan H. Winters - Architect
 8953 Oak Crest Road
 Shingle Springs, California 95632
 (530) 877-2843
 jan@jhwarchitect.com



SITE PLAN

A NEW COURTYARD BAR AND RESTROOMS FOR
Poor Red's Restaurant & Bar
 6221 PLEASANT VALLEY ROAD - EL DORADO, CALIFORNIA 95223

DRW: JHL, CR, JWG
DATE: 12/04/18
SCALE: NOTED
PROJECT: JHW
NO: 1828
Sheet: A-1