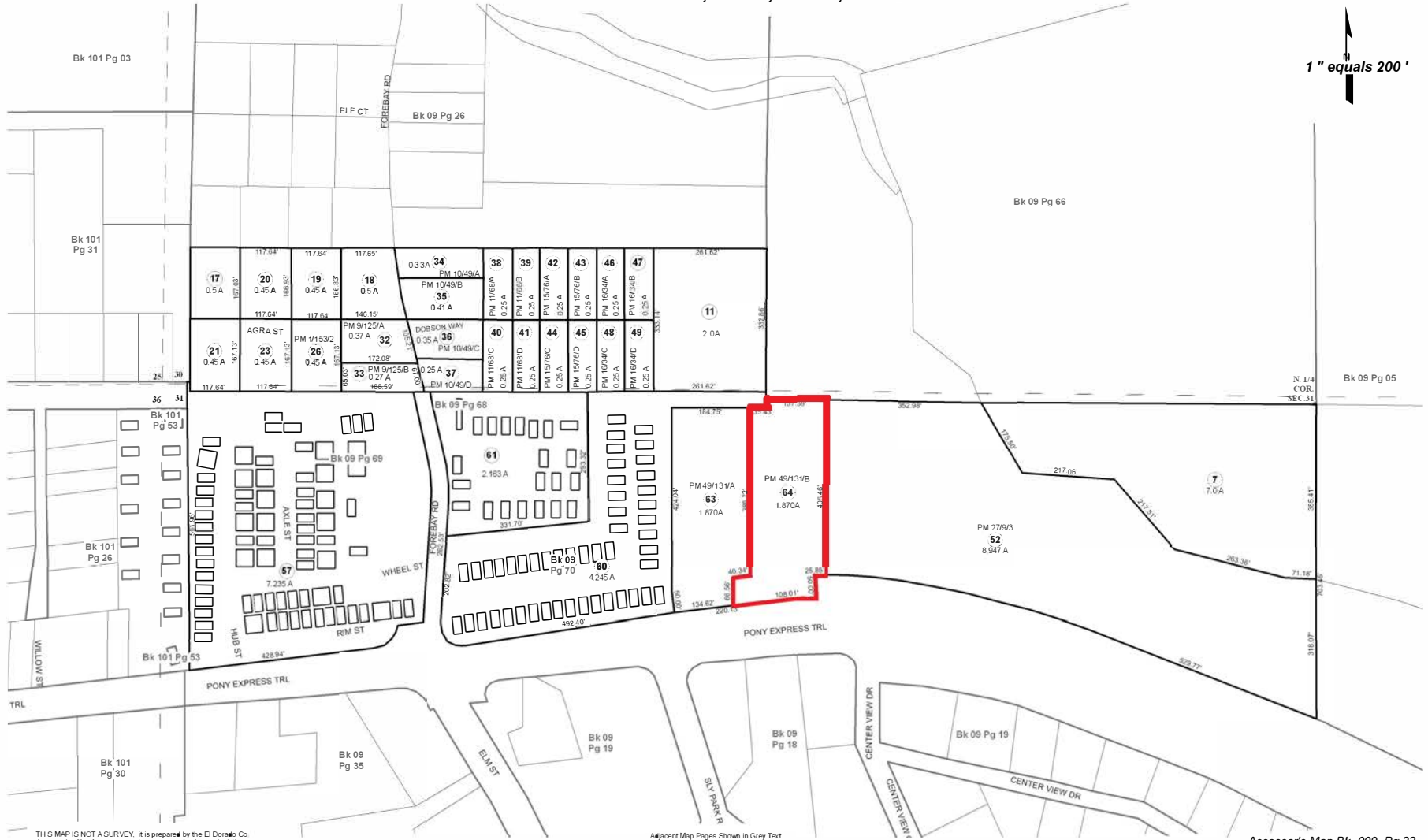
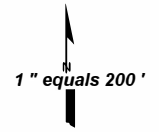


CUP22-0010/Stella Battery Storage
 Exhibit A: Location/Vicinity Map

POR. SECS. 30 & 31., T.11N., R.13E., M.D.M.

9:33



THIS MAP IS NOT A SURVEY. It is prepared by the El Dorado Co. Assessor's office for assessment purposes only. Area calculations and characteristics are not guaranteed. Users should verify items such as dimensions and acreage.

Acreages Are Estimates

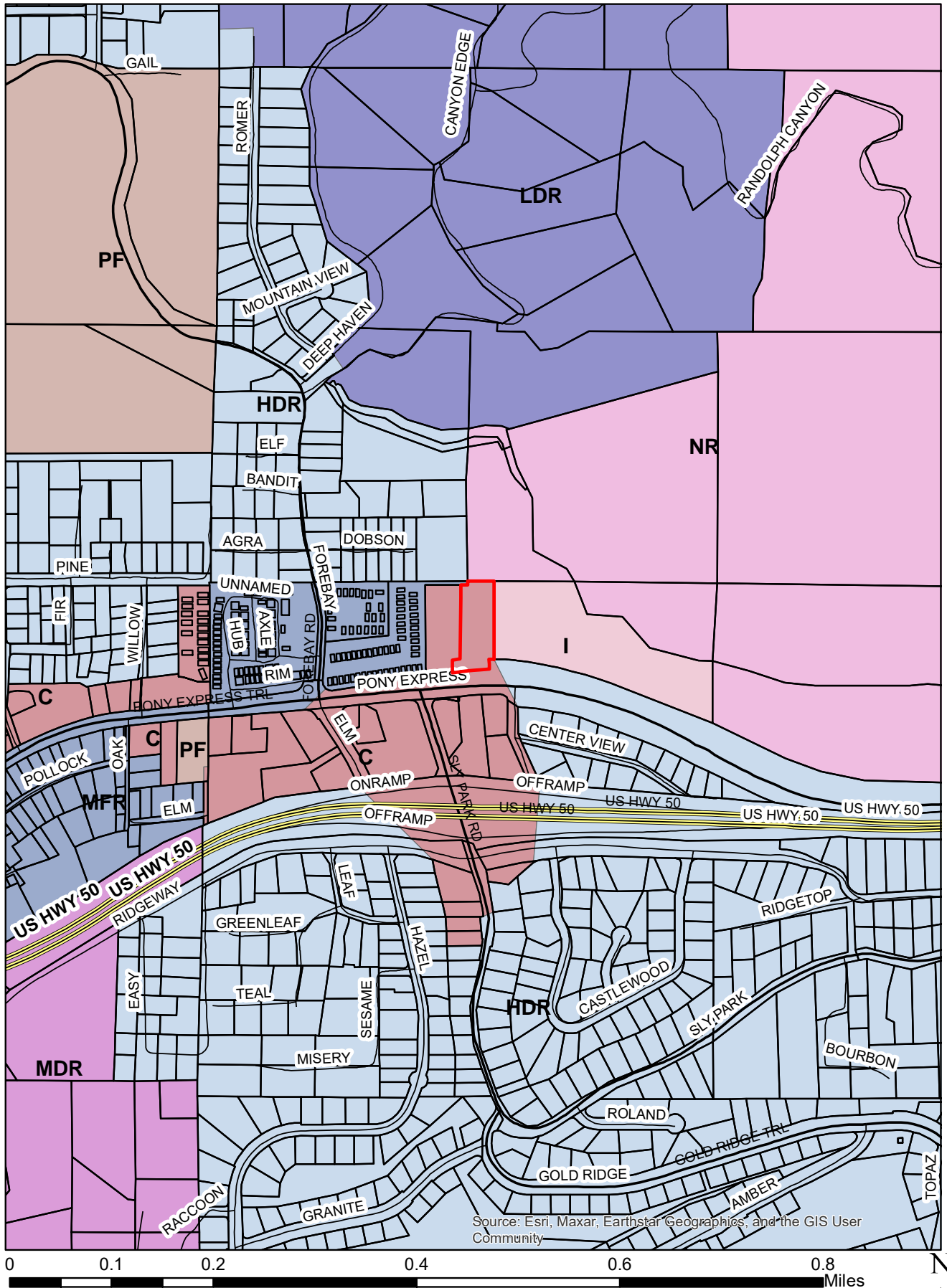
Adjacent Map Pages Shown in Grey Text
Assessor's Block Numbers Shown in Ellipses
Assessor's Parcel Numbers Shown in Circles

Rev. June 28, 2007

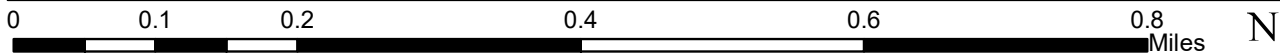
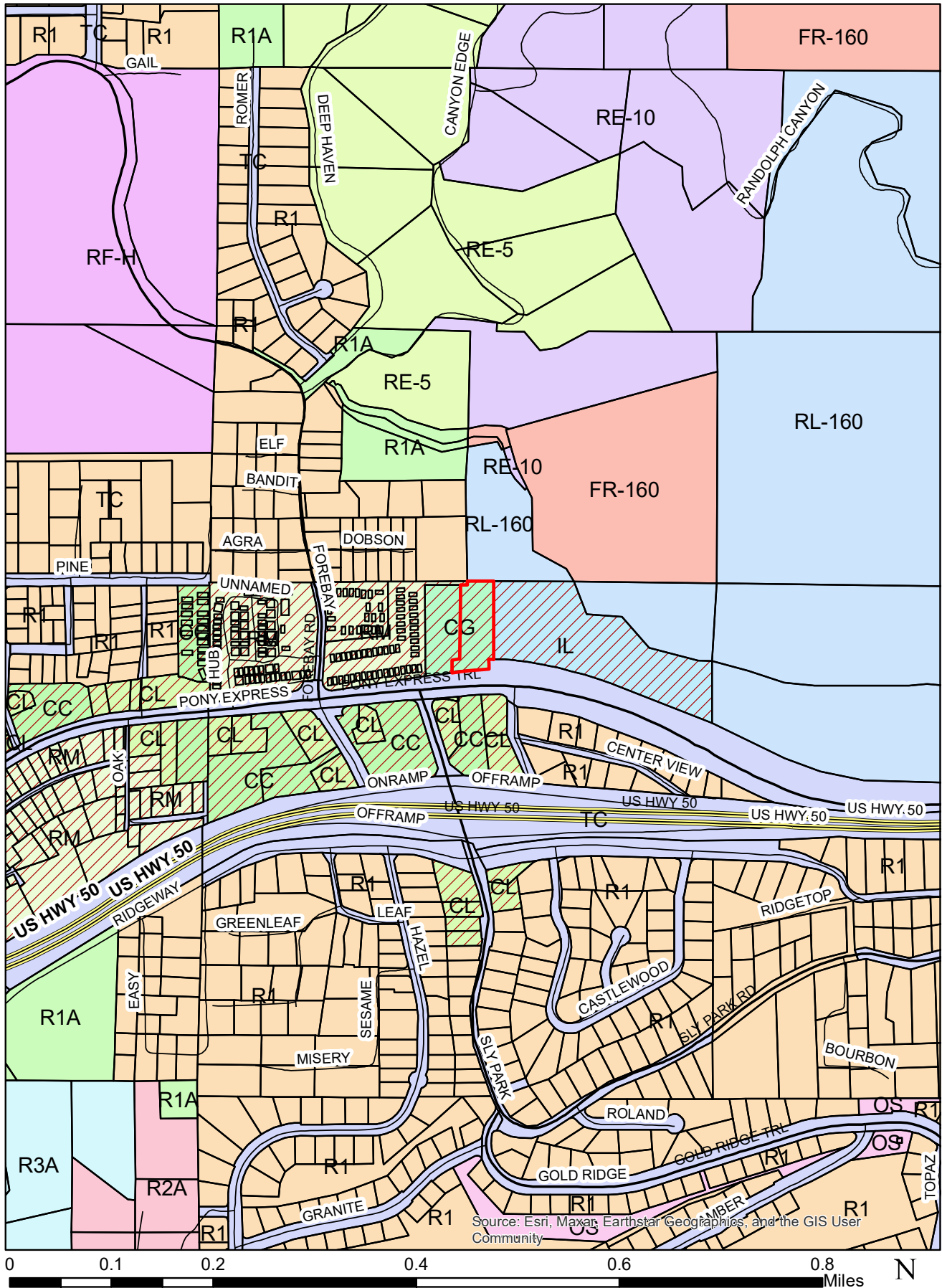
Assessor's Map Bk. 009, Pg.33
County of El Dorado, CA

CUP22-0010/Stella Battery Storage

Exhibit B: Assessor's Parcel Map



CUP22-0010/Stella Battery Storage
 Exhibit C: General Plan Land Use Map



CUP22-0010/Stella Battery Storage
Exhibit D: Zoning Map

Project: Stella Battery Storage
 Applicant: Apex Energy Solutions LLC
 APN:009-330-064
 El Dorado County
 Zoning: Industrial

STELLA BATTERY PROJECT

CONFIDENTIAL DOCUMENTS
 THE INFORMATION EMBODIED ON THIS DRAWING IS STRICTLY CONFIDENTIAL AND IS SUPPLIED WITH THE UNDERSTANDING THAT IT WILL BE HELD CONFIDENTIAL AND NOT DISCLOSED TO THIRD PARTIES WITHOUT THE PRIOR WRITTEN CONSENT OF ZGLOBAL, INC.

REV.	BY	DESCRIPTION	DATE	APPROVED BY
0	OI	SUBMITTAL #1	03/21/22	
1	OI	REV 1	12/10/22	



AGAHI TOORAJ TR & ADOREA CELESTE TR
 6505 PONY EXPRESS TRAIL
 POLLOCK PINES, CALIFORNIA 95726
 APN: 009330063

10.0' ELECTRICAL EASMENT
 PER BOOK 2845, PAGE 86

PARCEL AREA: 1.87 ACRES
 009-330-064
 TOORAJ AGAHI & ADOREA AGAHI

FIRE HYDRANT LOCATION
 #000360

CUP22-0010/Stella Battery Storage
 Exhibit E: Site Plan

1 inch
 Scale to Conform 24"x36" Plot



604 SUTTER ST, STE 250
 FOLSOM, CA 95630
 Phone : 916.985.9461
 Fax: 916.985.9467

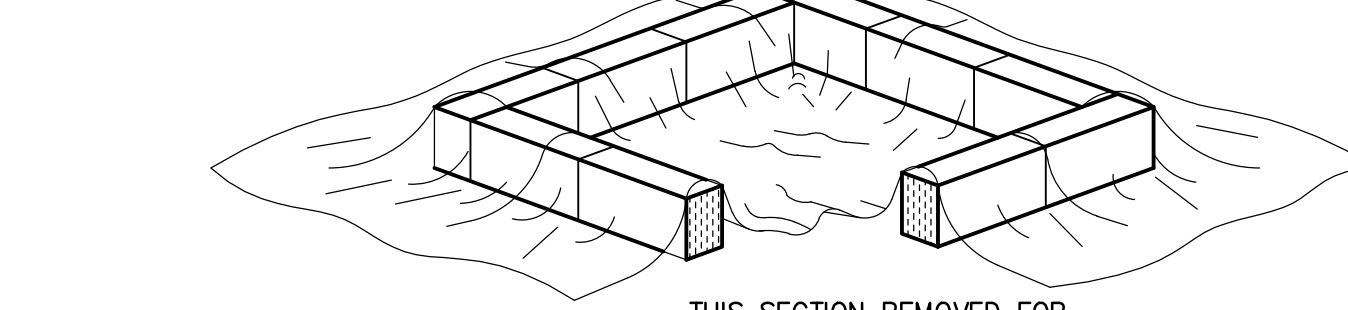
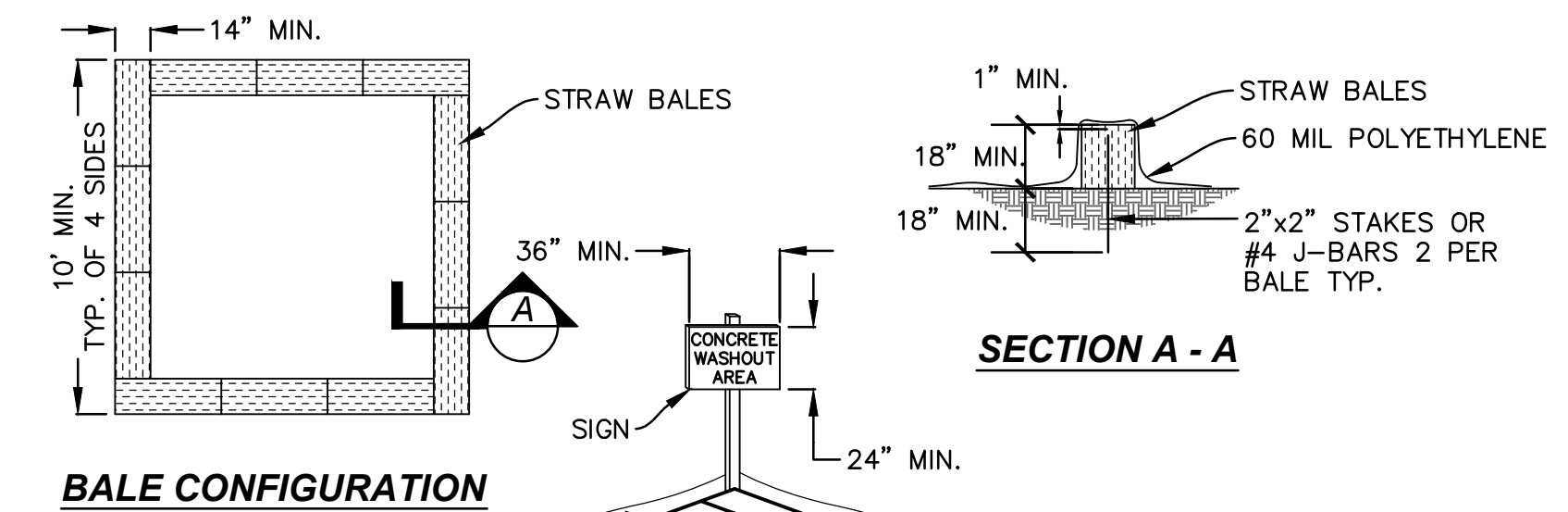
"THESE DRAWINGS AND SPECIFICATIONS HAVE BEEN PREPARED BY ZGLOBAL INC. FOR THEIR EXCLUSIVE USE IN ACCORD WITH SEC. 6737.3 OF THE 2012 PROFESSIONAL ENGINEERS ACT OF THE STATE OF CALIFORNIA"

SHEET TITLE:
PRODUCT SPECIFICATION SHEETS

DRAWN BY:	OI	DRAWING No.	
CHECKED:		SCALE:	AS NOTED
SCALE:		JOB NO.:	C-000
JOB NO.:		DATE:	
DATE:		REV No.:	1

EROSION AND SEDIMENT CONTROL NOTES:

1. THE CONTRACTOR SHALL FOLLOW ALL JURISDICTIONAL GUIDELINES FOR GRADING AND THE EROSION AND SEDIMENT CONTROL MEASURES SHOWN OR STATED ON THESE PLANS.
 2. CONTRACTOR MUST ENSURE THAT THE CONSTRUCTION SITE IS PREPARED PRIOR TO THE ONSET OF ANY STORM. CONTRACTOR SHALL HAVE ALL EROSION AND SEDIMENT CONTROL MEASURES IN PLACE FOR THE WINTER MONTHS PRIOR TO OCTOBER 1.
 3. ALL EROSION AND SEDIMENT CONTROL MEASURES SHALL BE MAINTAINED UNTIL DISTURBED AREAS ARE STABILIZED. CHANGES TO THIS EROSION AND SEDIMENT CONTROL PLAN SHALL BE MADE TO MEET FIELD CONDITIONS ONLY WITH THE APPROVAL OF OR AT THE DIRECTION OF A REPRESENTATIVE OF THE DEPARTMENT OF UTILITIES.
 4. THIS PLAN MAY NOT COVER ALL THE SITUATIONS THAT ARISE DURING CONSTRUCTION DUE TO UNANTICIPATED FIELD CONDITIONS. VARIATIONS MAY BE MADE TO THE PLAN IN THE FIELD SUBJECT TO THE APPROVAL OF OR AT THE DIRECTION OF A REPRESENTATIVE OF THE DEPARTMENT OF UTILITIES.
 5. ALL EROSION AND SEDIMENT CONTROL MEASURES SHALL BE CHECKED BEFORE AND AFTER ALL STORMS TO ENSURE MEASURES ARE FUNCTIONING PROPERLY.
 6. CONTRACTOR SHALL MAINTAIN A LOG AT THE SITE OF ALL INSPECTIONS OR MAINTENANCE OF BMPs, AS WELL AS, ANY CORRECTIVE CHANGES TO THE BMPs OR EROSION AND SEDIMENT CONTROL PLAN.
 7. IN AREAS WHERE SOIL WILL BE EXPOSED LONGER THAN 14 DAYS, CONTRACTOR SHALL STABILIZE EXPOSED SOILS WITH HYDROSEEDING OR OTHER EQUIVALENT METHOD. CONTRACTOR SHALL ENSURE NO AREAS WILL BE LEFT EXPOSED OVER THE WINTER SEASON.
 8. THE CONTRACTOR SHALL INSTALL THE STABILIZED CONSTRUCTION ENTRANCE PRIOR TO COMMENCEMENT OF GRADING. LOCATION OF THE ENTRANCE MAY BE ADJUSTED BY THE CONTRACTOR TO FACILITATE GRADING OPERATIONS. ALL CONSTRUCTION TRAFFIC ENTERING THE PAVED ROAD MUST CROSS THE STABILIZED CONSTRUCTION ENTRANCE. THE STABILIZED CONSTRUCTION ENTRANCE SHALL REMAIN IN PLACE UNTIL THE ROAD BASE ROCK COURSE IS COMPLETED.
 9. ALL SEDIMENT DEPOSITED ON PAVED ROADWAYS SHALL BE SWEEPED AT THE END OF EACH WORKING DAY OR AS NECESSARY.
 10. CONTRACTOR SHALL PLACE GRAVEL BAG BARRIERS AROUND ALL NEW DRAINAGE STRUCTURE OPENINGS IMMEDIATELY AFTER THE STRUCTURE OPENING IS CONSTRUCTED. THESE GRAVEL BAG BARRIERS SHALL BE MAINTAINED AND REMAIN IN PLACE UNTIL CONSTRUCTION IS COMPLETED.
 11. SOIL STOCKPILE SHALL BE SURROUNDED BY STRAW WATTLE. CONTRACTOR SHALL COVER STOCKPILE WHEN NOT IN USE.
12. CONTRACTOR SHALL IMPLEMENT HOUSEKEEPING PRACTICES AS FOLLOWS:
 - A. SOLID WASTE MANAGEMENT: PROVIDE DESIGNATED WASTE COLLECTION AREAS AND CONTAINERS. ARRANGE FOR REGULAR REMOVAL AND DISPOSAL. CLEAR SITE OF TRASH INCLUDING ORGANIC DEBRIS, PACKAGING MATERIALS, SCRAP OR SURPLUS BUILDING MATERIALS AND DOMESTIC WASTE DAILY.
 - B. MATERIAL DELIVERY AND STORAGE: PROVIDE A DESIGNATED MATERIAL STORAGE AREA WITH SECONDARY CONTAINMENT SUCH AS BERMING. STORE MATERIAL ON PALLETS AND PROVIDE COVERING FOR SOLUBLE MATERIALS. RELOCATE STORAGE AREA INTO BUILDING SHELL WHEN POSSIBLE. INSPECT AREA WEEKLY.
 - C. CONCRETE WASTE: PROVIDE A DESIGNATED AREA FOR A TEMPORARY PIT TO BE USED FOR CONCRETE TRUCK WASH-OUT. DISPOSE OF HARDENED CONCRETE OFFSITE. AT NO TIME SHALL A CONCRETE TRUCK DUMP ITS WASTE AND CLEAN ITS TRUCK INTO THE CITY STORM DRAINS VIA CURB AND GUTTER. INSPECT DAILY TO CONTROL RUNOFF, AND WEEKLY FOR REMOVAL OF HARDENED CONCRETE.
 - D. PAINT AND PAINTING SUPPLIES: PROVIDE INSTRUCTION TO EMPLOYEES AND SUBCONTRACTORS REGARDING REDUCTION OF POLLUTANTS INCLUDING MATERIAL STORAGE, USE, AND CLEAN UP. INSPECT SITE WEEKLY FOR EVIDENCE OF IMPROPER DISPOSAL.
 - E. VEHICLE FUELING, MAINTENANCE AND CLEANING: PROVIDE A DESIGNATED FUELING AREA WITH SECONDARY CONTAINMENT SUCH AS BERMING. DO NOT ALLOW MOBILE FUELING OF EQUIPMENT. PROVIDE EQUIPMENT WITH DRIP PANS. RESTRICT ON-SITE MAINTENANCE AND CLEANING OF EQUIPMENT TO A MINIMUM. INSPECT AREA WEEKLY.
 - F. HAZARDOUS WASTE MANAGEMENT: PREVENT THE DISCHARGE OF POLLUTANTS FROM HAZARDOUS WASTES TO THE DRAINAGE SYSTEM THROUGH PROPER MATERIAL USE, WASTE DISPOSAL AND TRAINING OF EMPLOYEES. HAZARDOUS WASTE PRODUCTS COMMONLY FOUND ON-SITE INCLUDE BUT ARE NOT LIMITED TO PAINTS & SOLVENTS, PETROLEUM PRODUCTS, FERTILIZERS, HERBICIDES & PESTICIDES, SOIL STABILIZATION STABILIZATION PRODUCTS, ASPHALT PRODUCTS AND CONCRETE CURING PRODUCTS.
 13. THE FOLLOWING SOIL WIND EROSION CONTROL (DUST CONTROL) METHODS ARE PROPOSED AS PART OF THESE IMPROVEMENT PLANS:
 - A. WATER THE SOIL OF THE SITE AND THE ADJACENT STREETS BEING USED IN CONNECTION WITH SOIL DISTURBANCE OPERATIONS ON THE SITE IN ACCORDANCE WITH CALTRANS STANDARDS.
 - B. COVER EXPOSED SOIL WITH GRAVEL OR ROCK LANDSCAPING.
 - C. COVER EXPOSED SOIL WITH ORGANIC MULCHES, SPRINKLER IRRIGATED.
 - D. IRRIGATE GRASSES.
 - E. MAINTAIN LANDSCAPE VEGETATION.



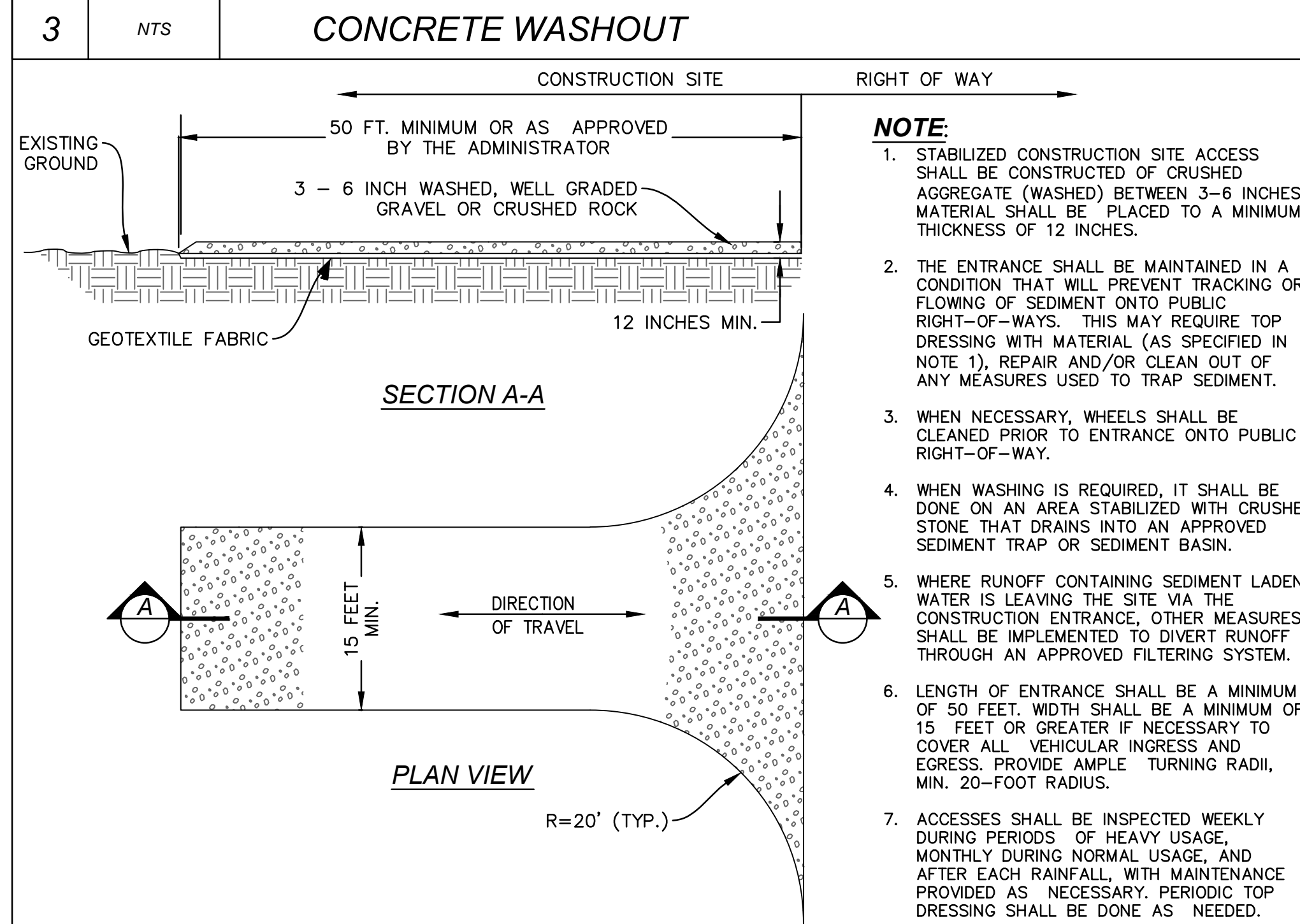
THIS SECTION REMOVED FOR GRAPHICAL REPRESENTATION ONLY. STRAW BALE PERIMETER SHALL BE CONTINUOUS.

- NOTES:**
- 1.) FACE SIGN TOWARD NEAREST STREET OR ACCESS POINT.
 - 2.) CONCRETE WASHOUT SHALL BE LOCATED BEHIND THE CURB AND 50 FT. MINIMUM FROM DRAINAGE INLETS OR WATERCOURSES

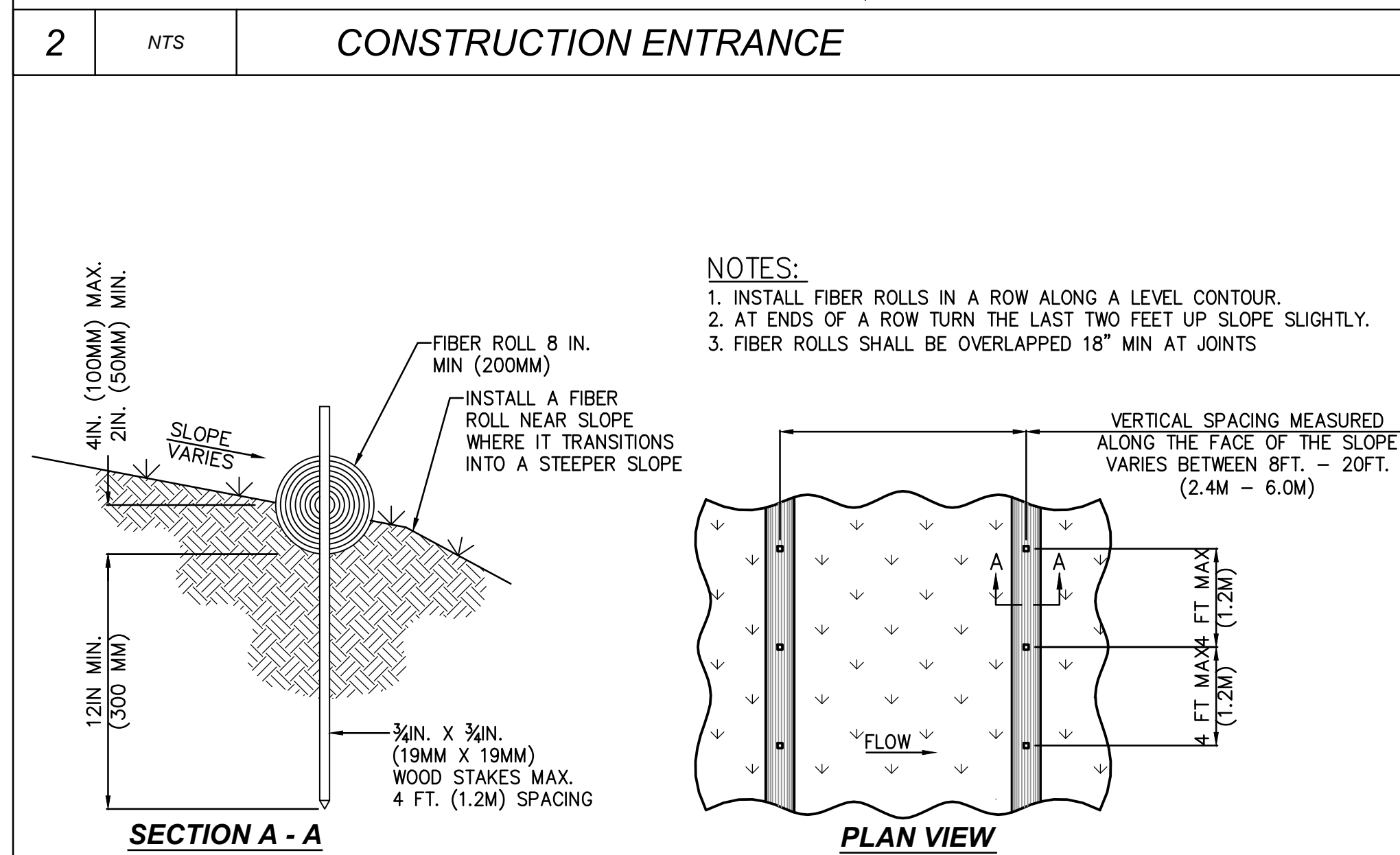
EROSION AND SEDIMENT CONTROL MEASURES													
PHASE OF CONSTRUCTION	(WET SEASON)						(WET AND DRY SEASON)						
	HYDRO-SEEDING	STRAW MULCHING & TACKIFIER	PRESERVATION OF EXISTING VEGETATION	SOIL BINDERS	FIBER ROLLS	OUTLET PROTECTION	STORM DRAIN INLET PROTECTION	DEWATERING	STABILIZED CONSTRUCTION ENTRANCE	MATERIAL & WASTE DISPOSAL LOCATION	CONCRETE WASHOUT	DUST CONTROL	SEDIMENT TRAP
PRE-GRADING			●		●		●		●	●		●	●
CUT AND FILL QUANTITIES	●	●		●			●					●	●
UNDERGROUND WORK												●	
STORM DRAIN IMPROVEMENTS						●				●		●	
CURB & GUTTER												●	
STREET IMPROVEMENTS					●							●	
POST CONSTRUCTION	●	●	●										

NOTES:

1. ALL EROSION BMPs SHALL BE IN PLACE PRIOR TO STORM EVENTS AND IN ACCORDANCE WITH THE LATEST EDITION OF SECTION II OF THE IMPROVEMENT STANDARDS AND THE CALIFORNIA STORM WATER HANDBOOK.
2. MAINTAIN BMPs AS NECESSARY.



- NOTE:**
1. STABILIZED CONSTRUCTION SITE ACCESS SHALL BE CONSTRUCTED OF CRUSHED AGGREGATE (WASHED) BETWEEN 3-6 INCHES. MATERIAL SHALL BE PLACED TO A MINIMUM THICKNESS OF 12 INCHES.
 2. THE ENTRANCE SHALL BE MAINTAINED IN A CONDITION THAT WILL PREVENT TRACKING OR FLOWING OF SEDIMENT ONTO PUBLIC RIGHT-OF-WAYS. THIS MAY REQUIRE TOP DRESSING WITH MATERIAL (AS SPECIFIED IN NOTE 1), REPAIR AND/OR CLEAN OUT OF ANY MEASURES USED TO TRAP SEDIMENT.
 3. WHEN NECESSARY, WHEELS SHALL BE CLEANED PRIOR TO ENTRANCE ONTO PUBLIC RIGHT-OF-WAY.
 4. WHEN WASHING IS REQUIRED, IT SHALL BE DONE ON AN AREA STABILIZED WITH CRUSHED STONE THAT DRAINS INTO AN APPROVED SEDIMENT TRAP OR SEDIMENT BASIN.
 5. WHERE RUNOFF CONTAINING SEDIMENT LADEN WATER IS LEAVING THE SITE VIA THE CONSTRUCTION ENTRANCE, OTHER MEASURES SHALL BE IMPLEMENTED TO DIVERT RUNOFF THROUGH AN APPROVED FILTERING SYSTEM.
 6. LENGTH OF ENTRANCE SHALL BE A MINIMUM OF 50 FEET. WIDTH SHALL BE A MINIMUM OF 15 FEET OR GREATER IF NECESSARY TO COVER ALL VEHICULAR INGRESS AND EGRESS. PROVIDE AMPLE TURNING RADII, MIN. 20-FOOT RADIUS.
 7. ACCESSES SHALL BE INSPECTED WEEKLY DURING PERIODS OF HEAVY USAGE, MONTHLY DURING NORMAL USAGE, AND AFTER EACH RAINFALL, WITH MAINTENANCE PROVIDED AS NECESSARY. PERIODIC TOP DRESSING SHALL BE DONE AS NEEDED.



- NOTES:**
1. INSTALL FIBER ROLLS IN A ROW ALONG A LEVEL CONTOUR.
 2. AT ENDS OF A ROW TURN THE LAST TWO FEET UP SLOPE SLIGHTLY.
 3. FIBER ROLLS SHALL BE OVERLAPPED 18" MIN AT JOINTS



FIBER ROLL

CUP22-0010/Stella Battery Storage
Exhibit F: Grading Plan

APPROVED	BY	DATE	REVISION	CHECK	NO.	BY	DESIGN	DRAWN	QUANT.	ORIGINAL SCALE IS IN INCHES
										2

REGISTERED PROFESSIONAL ENGINEER
No. 0048888
Exp. 3-31-28
CIVIL
STATE OF CALIFORNIA

WE
2960 Douglas Blvd., Suite 160, Roseville, CA 95681
Ph. 916-772-7800 | www.WEEcorp.com

ZGLOBAL
604 SUTTER ST., SUITE 250
FOLSOM, CA
(916) 985-9461

STELLA BATTERY STORAGE
EL DORADO COUNTY, CA
APN: 009-330-064-000

EROSION AND SEDIMENT CONTROL DETAILS

Sheet
C4
4 of 4
04/10/2023

PROJECT R23002 - STELLA; EL DORADO COUNTY
24-0734 B 9 of 10

CUP22-0010/Stella Battery Storage
Exhibit G: Photosimulation

