

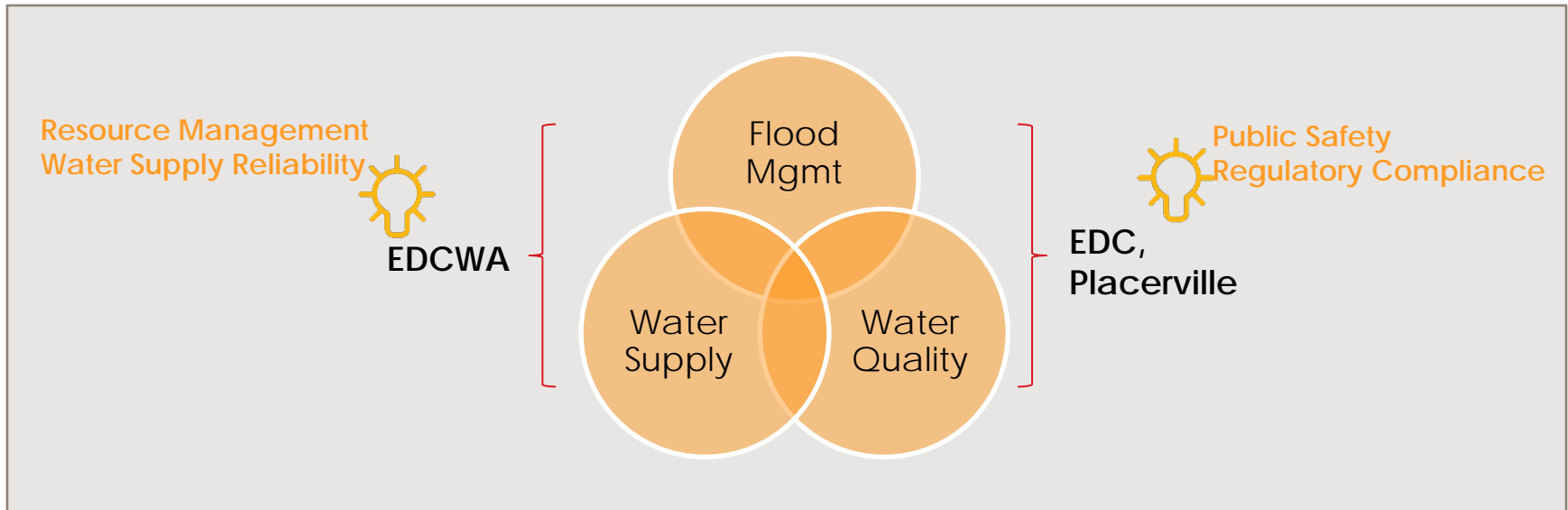


El Dorado County Board of Supervisors Presentation

# West Slope Stormwater Resource Plan

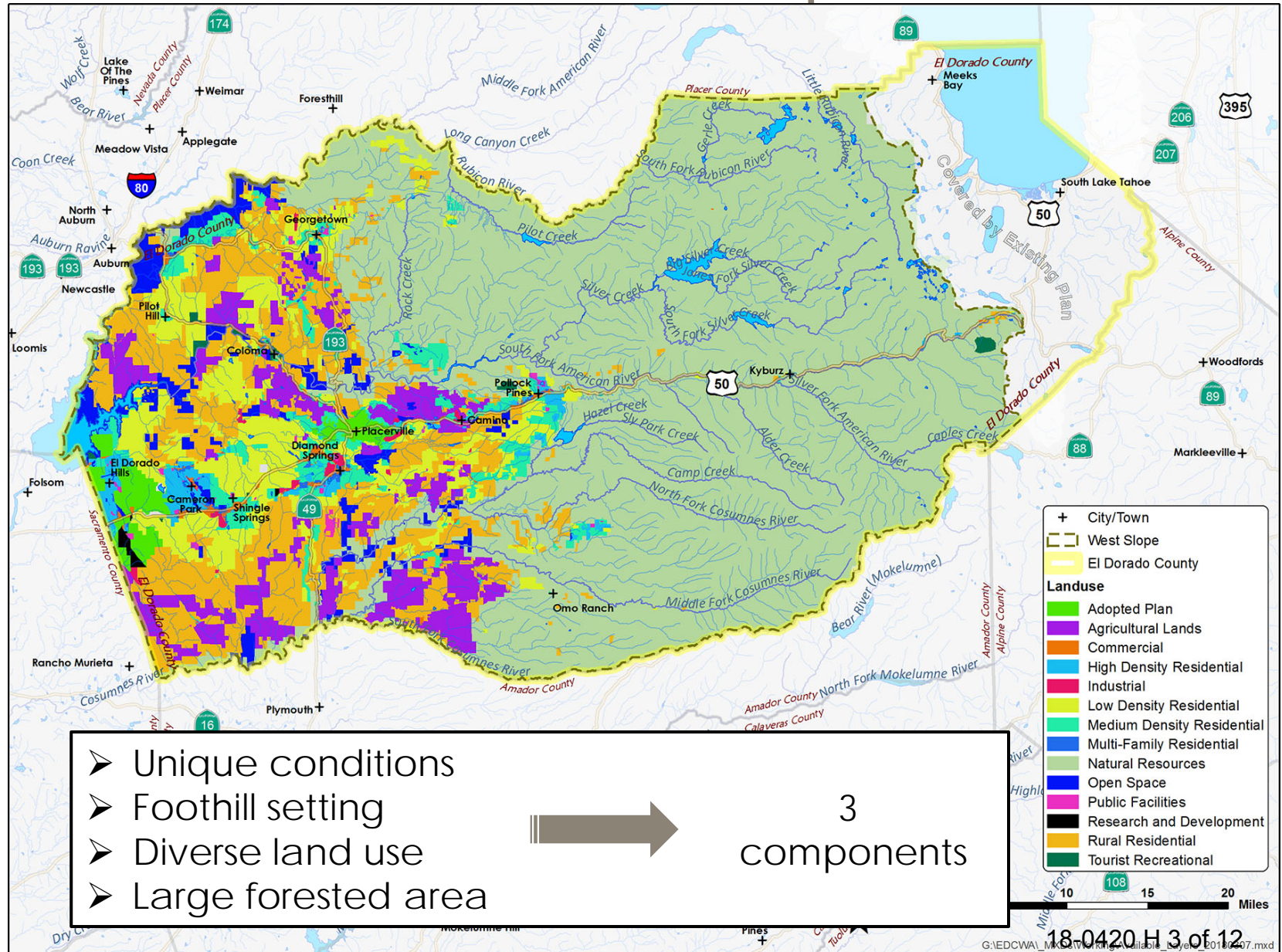
April 10, 2018

# Stormwater as a Resource



Integrated Water Management for Sustainability and Economic Development  
Organizational Development and Capacity Building  
Opportunities for State and Federal Technical and Financial Assistance

# Land Use in West Slope



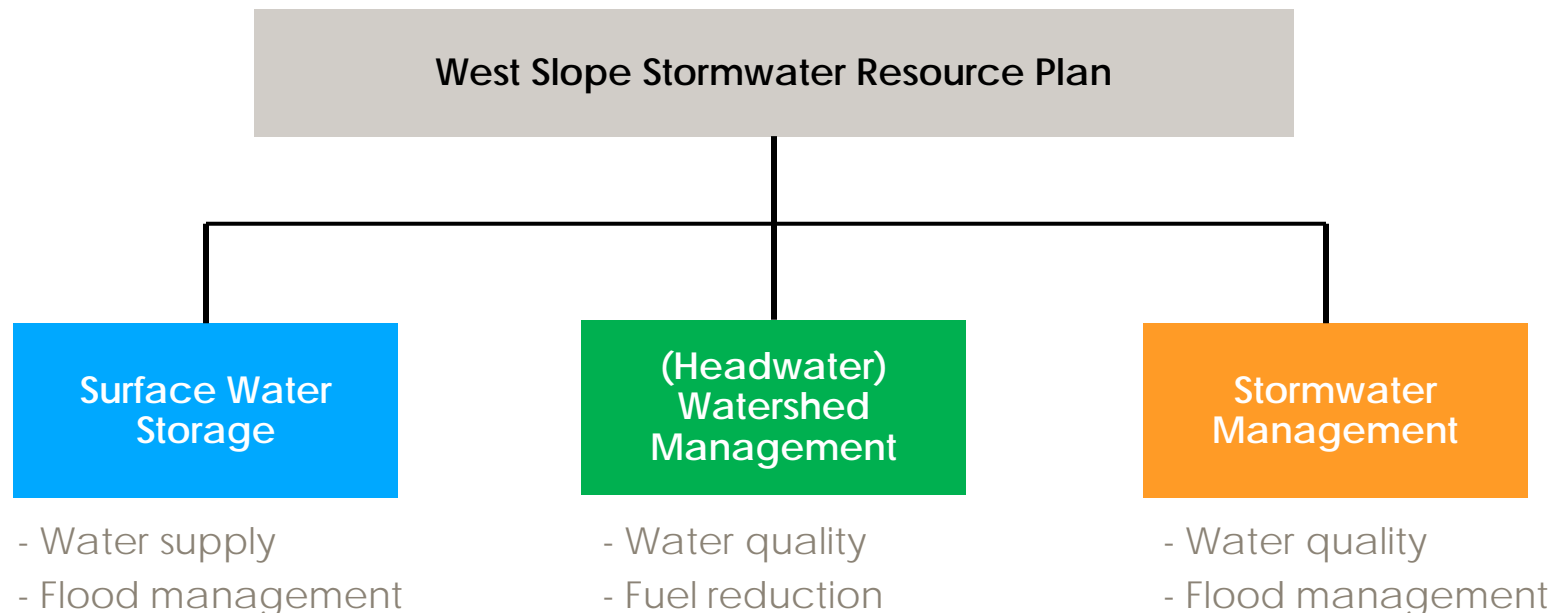
➤ Unique conditions  
 ➤ Foothill setting  
 ➤ Diverse land use  
 ➤ Large forested area

➔

3  
 components

# West Slope SWRP

- An SWRP is needed for Proposition 1 grant eligibility
- West Slope SWRP developed in conformance with State Water Board Guidelines
- Broken into 3 components to recognize unique settings and needs



# Collaboration with Agencies

## Received Information From:

1. City of Placerville
2. El Dorado County
  - Community Development Services
  - Department of Environmental Management
3. EDCWA
4. American River Conservancy
5. El Dorado County & Georgetown Divide Resource Conservation Districts
6. El Dorado Irrigation District
7. U.S. Forest Service
8. Caltrans



## Contacted:

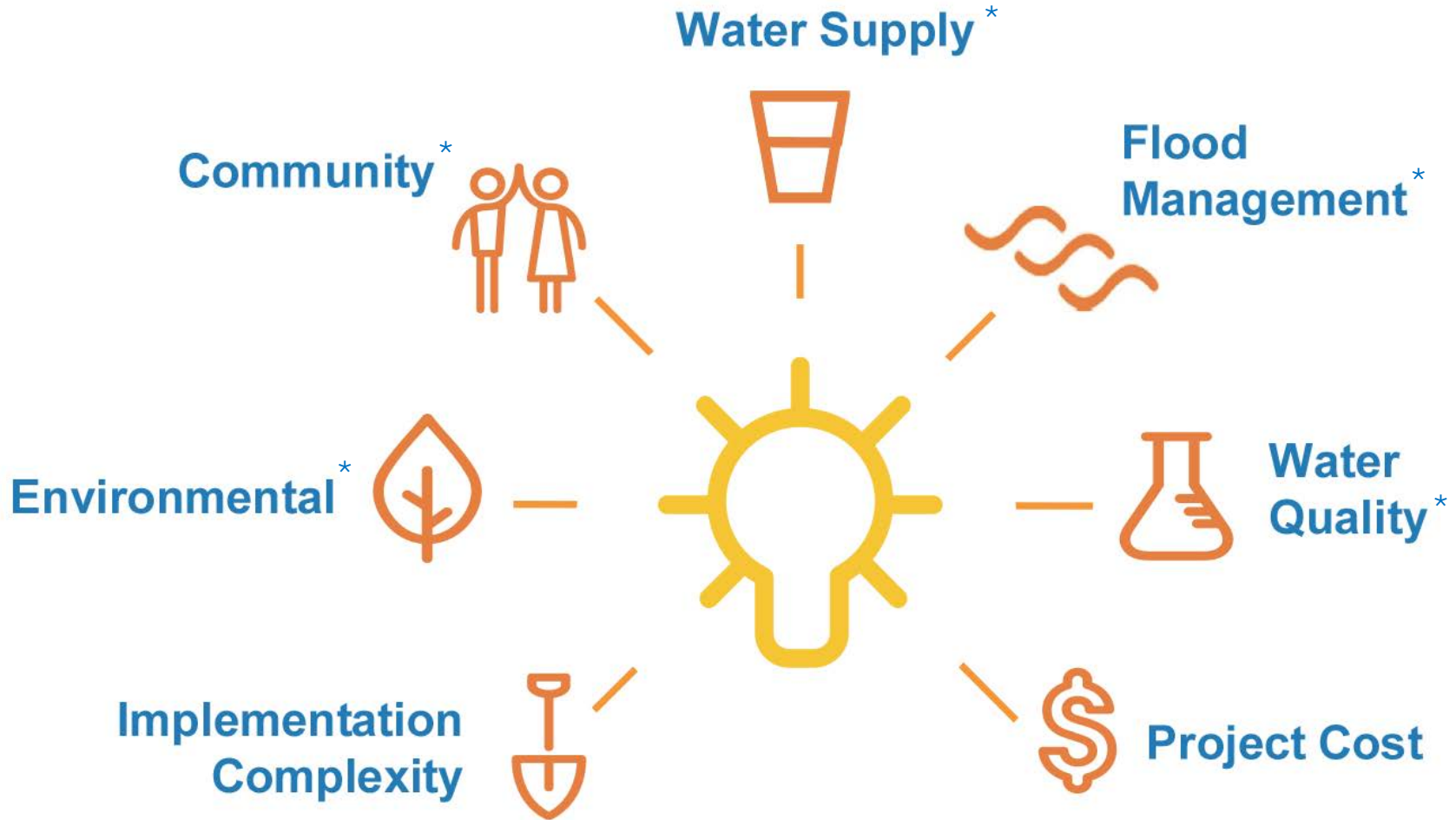
El Dorado County Department of:

1. Environmental Management
2. Transportation
3. Planning and Building
4. Parks and Trails
5. Code Enforcement
6. Agriculture
7. Surveyor

Additional Agencies:

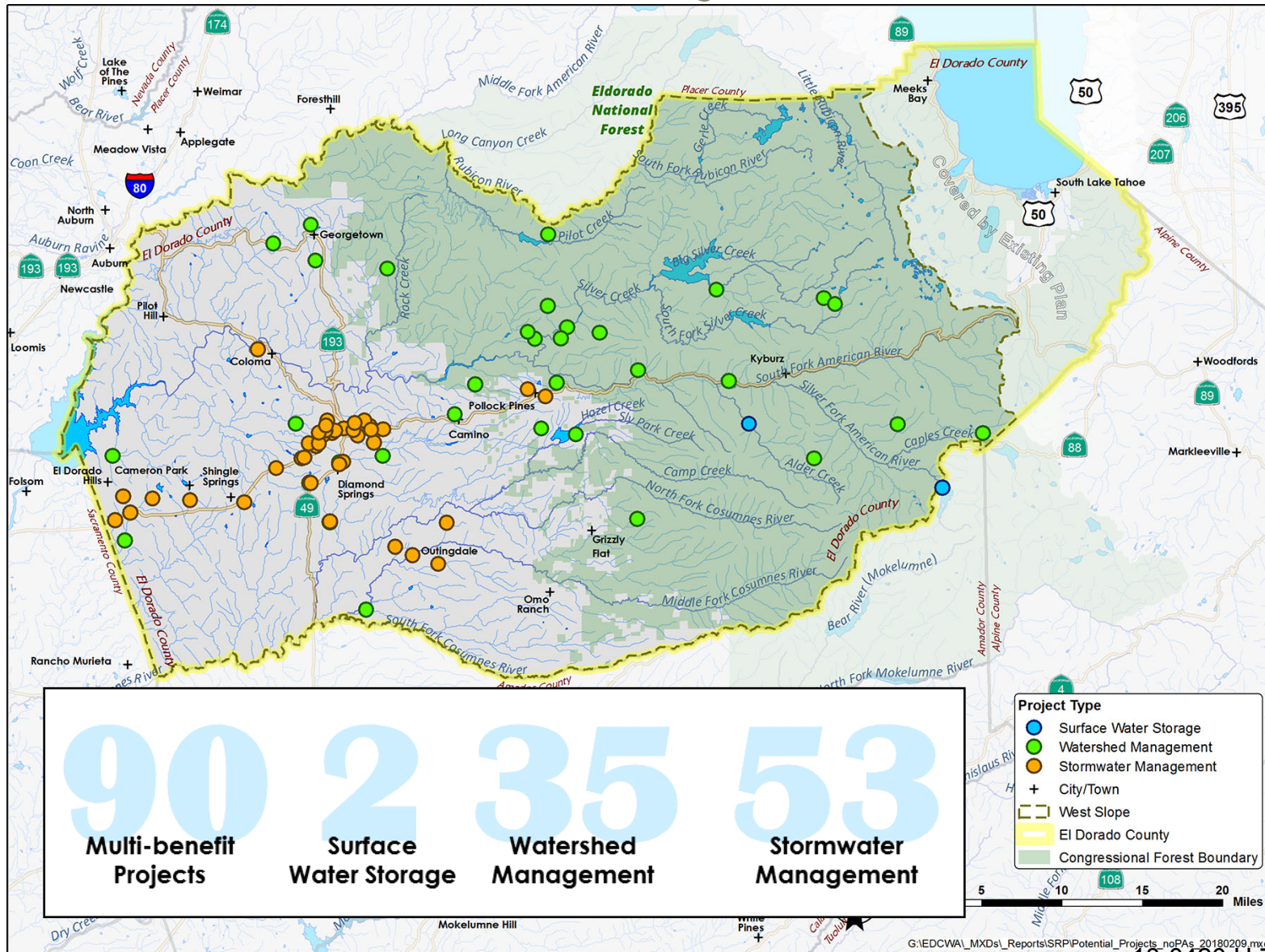
1. Cosumnes, American, Bear & Yuba (CABY) Integrated Regional Water Management Group

# Multi-Benefit Project Considerations



\* Required by State Water Board SWRP Guidelines; other categories developed to aid in prioritization.

# Multi-Benefit Projects



# Project Evaluation Process

## Project Identification

- Solicited projects from various agencies



## Project Evaluation

- Confirmed criteria & assigned weights at workshop with all Partners present
- Performed qualitative & quantitative analysis



## Project Prioritization

- Projects grouped into A, B, C
- Confirmed results at meeting with all Partners present
- No comments from public on results



# 15 Top Priority Projects

## Surface Water Storage Component

- Alder Reservoir
- Silver Lake Dam Remediation

## Watershed Management Component

- Fire Adaptive along Highway 50-Fuels Reduction
- Caples Watershed Improvement

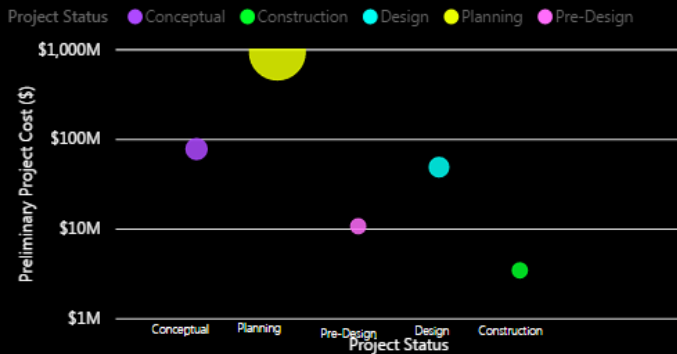
## Stormwater Management Component

- Headington Yard Wash Rack
- Diamond Springs Parkway-Roadway and Drainage Improvement Project
- Town of El Dorado Drainage Improvements
- Town of El Dorado Green Street Project
- Splash in the Class-Outreach Program
- Union Mine Landfill Retention Pond
- Upper Main Ditch Stormwater Improvements
- BMP Countywide Demonstration Projects
- Cameron Park Drainage Improvements
- Stormwater Detention Basin-Hangtown Creek Flood Damage Reduction Project
- Cedar Ravine Road Drainage Improvement

# Data Management Tool

## West Slope SWRP Project Summary

Project Status and Project Cost



Total Number of Projects

90

Total Preliminary Cost

\$1,082M

Funding/Spent Received to Date (\$)

\$0M

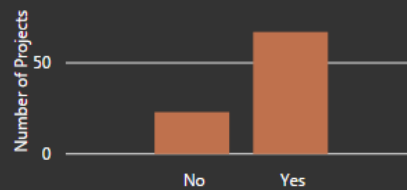
In-Kind (\$)

\$0M

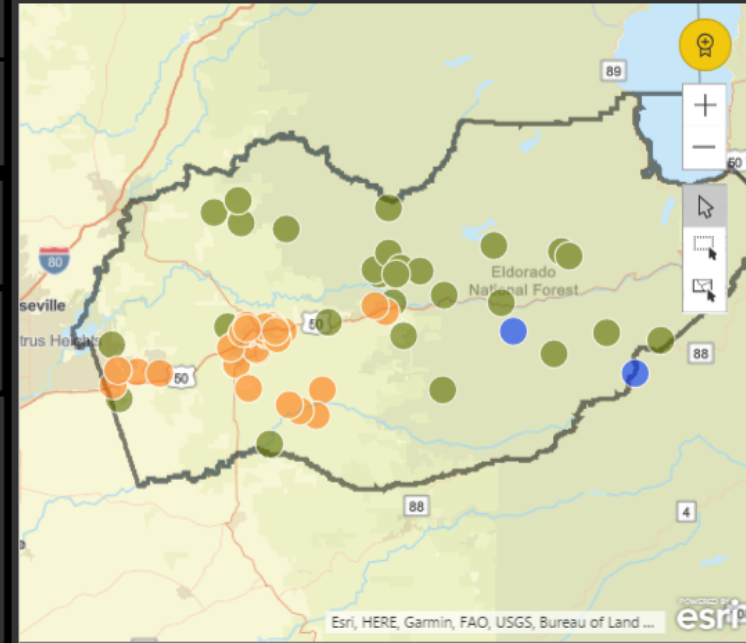
Grant/Other (\$)

\$0M

Projects Benefiting DAC/EDA



Project Location



### Project Summary

Project ID	Project Component	Project Name	Project Type	Grouping	Responsible Agency
100	Surface Water Storage	Alder Reservoir	Reservoir Creation	A	EDCWA
104	Surface Water Storage	Silver Lake Dam Remediation	Reservoir Upgrade	C	EID
200	Watershed Management	Biomass Plant-Union Mine	Renewable Energy	A	EDCWA
202	Watershed Management	Slate Creek Monitoring Project	Water Quality Management	B	El Dorado County - Community Development Servi
206	Watershed Management	Carson Creek Restoration	Creek Restoration	A	El Dorado County- Community Development Servi
207	Watershed Management	New York Creek Restoration	Creek Restoration	A	El Dorado County- Community Development Servi
208	Watershed Management	Weber Creek Restoration	Creek Restoration	A	El Dorado County- Community Development Servi
209	Watershed Management	King Fire Watershed Restoration & Reforestation Project	Fire Restoration	B	El Dorado County & Geometown Divide Resource

# SWRP Implementation

## Presentations and Adoptions

- EDCWA Board of Directors – March 14<sup>th</sup>
- Placerville City Council – March 27<sup>th</sup>
- EDC Board of Supervisors – April 10<sup>th</sup>

**Future Updates:** Every 5 years, with annual progress assessments; EDCWA continue to lead this collaborative effort

## Near-Term Next Steps

1. EDCWA to complete data management tool
2. CABY to incorporate projects into IRWMP
3. SWRCB to review SWRP for concurrence
4. Partner Agencies to further develop top priority projects for implementation

