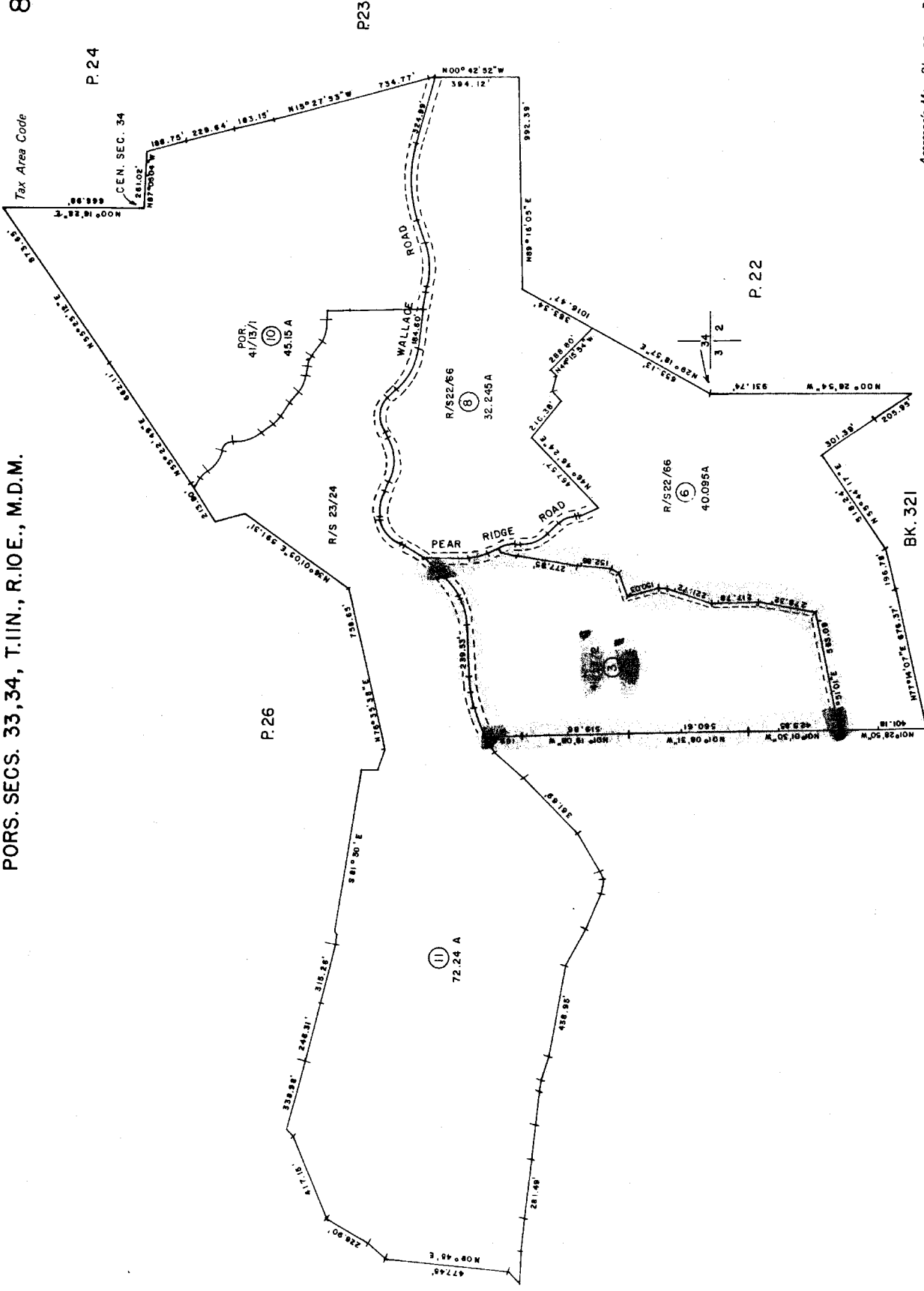


PORS. SECS. 33, 34, T. 11N., R. 10E., M.D.M.

89:32

# EXHIBIT B



Assessor's Map Bk. 89 - Pg. 32  
County of El Dorado, California

NOTE - Assessor's Block Numbers Shown in Ellipses  
Assessor's Parcel Numbers Shown in Circles

THIS MAP IS NOT A SURVEY, It is prepared by the El Dorado Ca  
Assessor's office for assessment purposes only.