



Agriculture Workshop

El Dorado County Board of
Supervisors

October 24, 2011

Purpose:

- To support and enhance the economic development of agriculture in El Dorado County.
- To identify and alleviate roadblocks to agricultural growth and agritourism in the County.

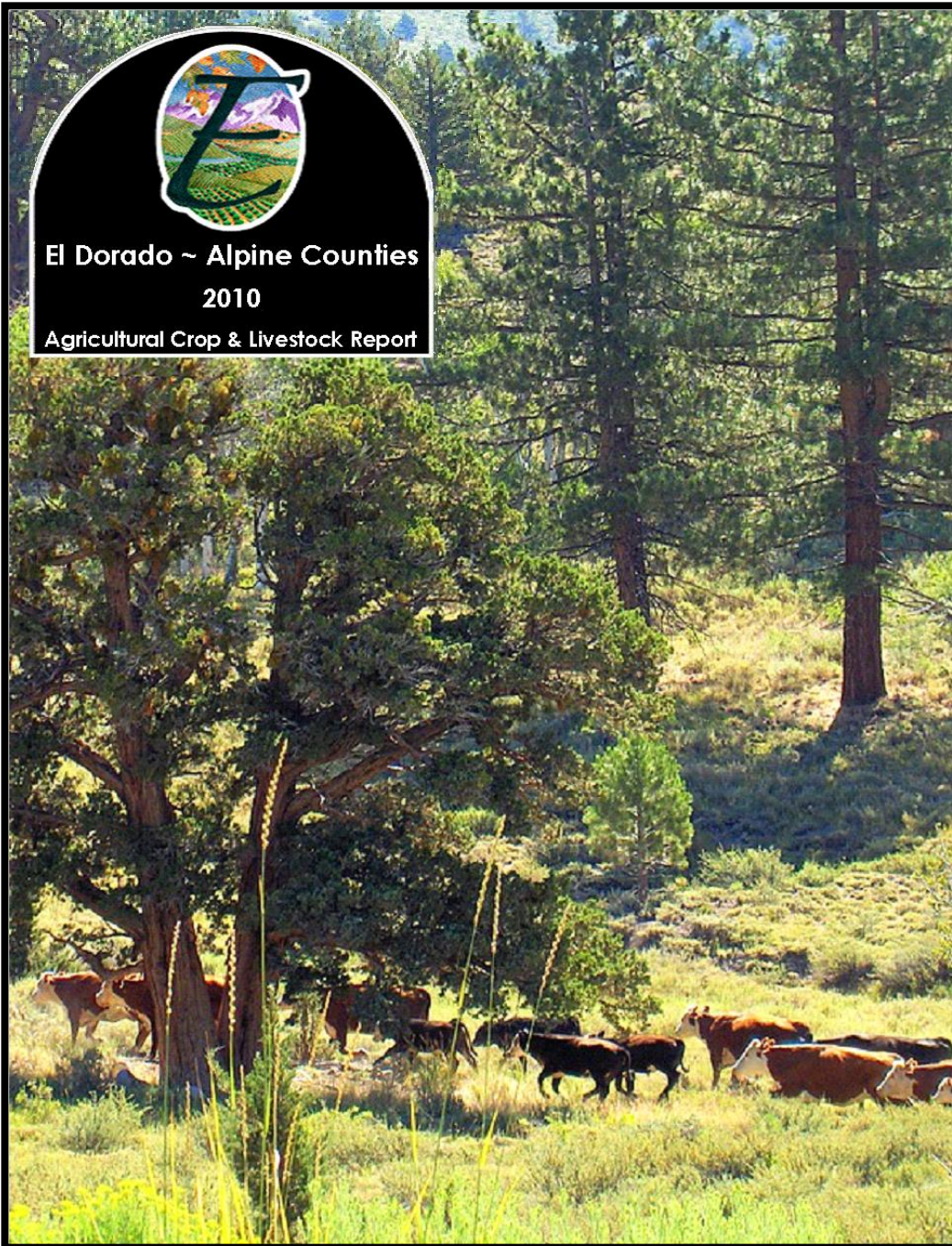




El Dorado ~ Alpine Counties

2010

Agricultural Crop & Livestock Report



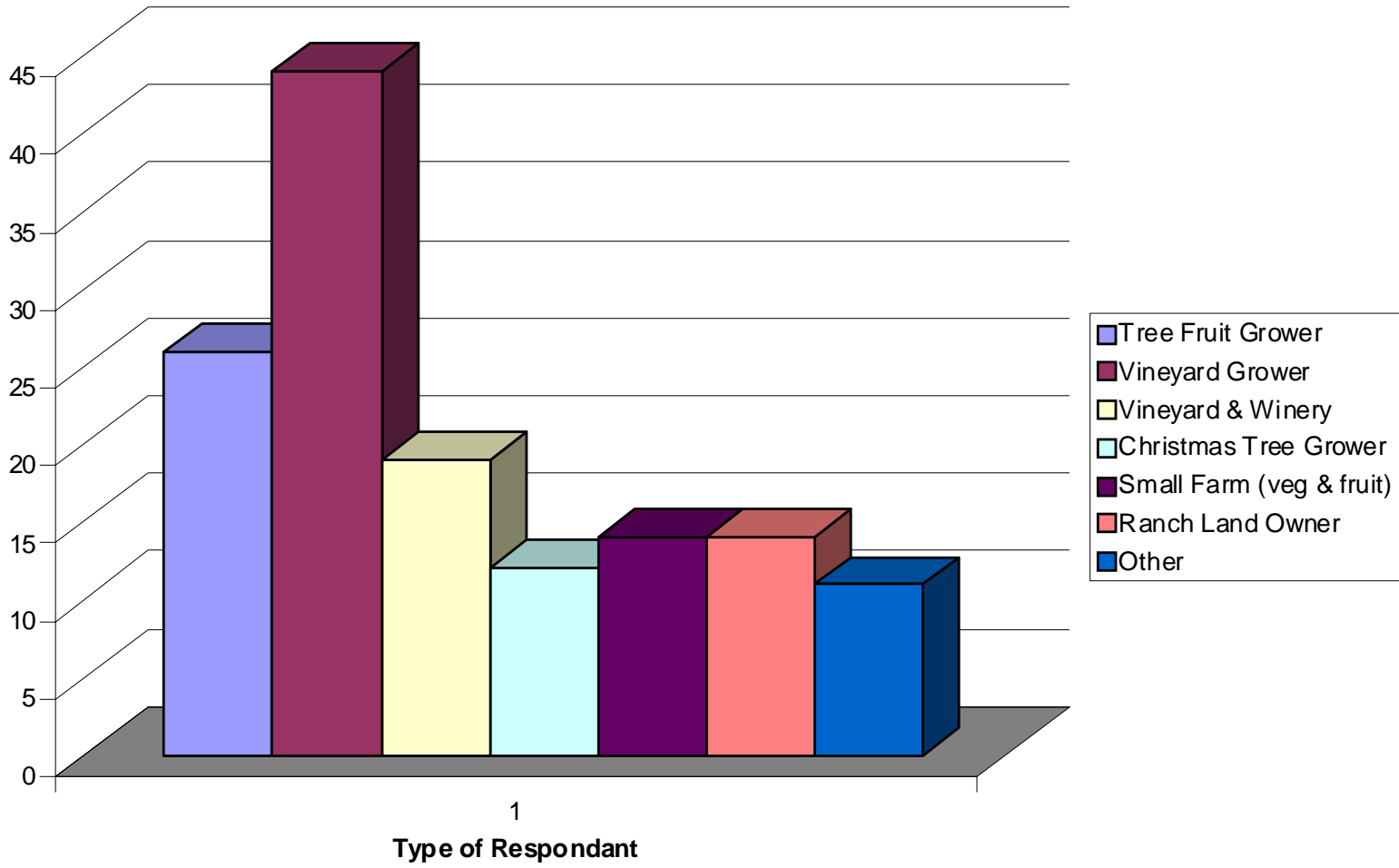
Introduction

- On 8/29/11, representatives from the Ag Department, UCCE and RCD met to discuss topics relevant to agriculture in El Dorado County.
 - It was decided that an outreach survey would provide feedback regarding current issues surrounding agriculture in the County and give a good indication of how important the identified issues are to the industry and those not normally involved in the governing or planning process
- Survey sent out by email and USPS on 9/2/11
- Survey closed 9/12/11

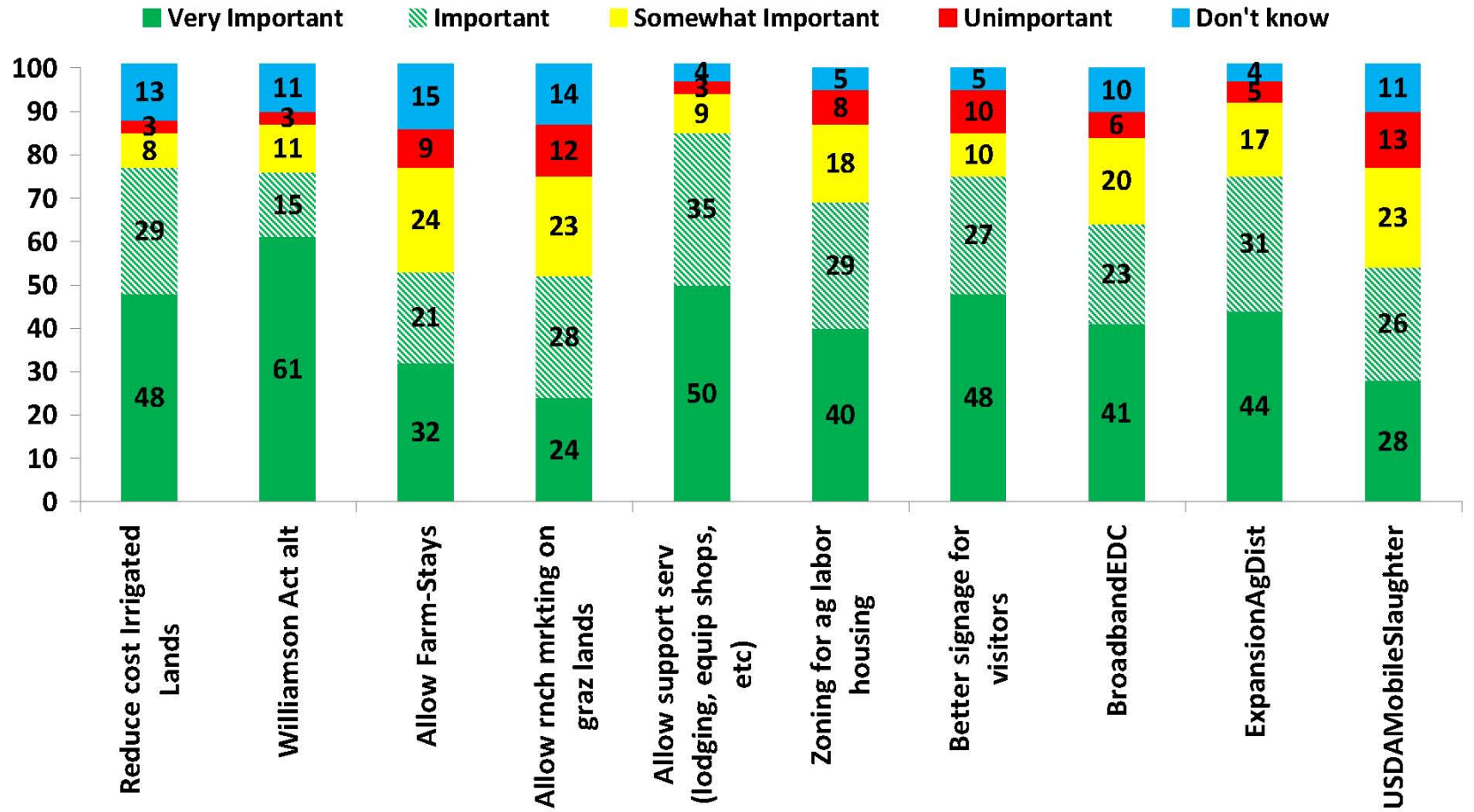
Survey Overview

- Of 576 surveys sent out –107 replied
- Mailing lists: UCCE, pesticide database, & crop report
- Industry groups under-represented: timber & cattle

Survey Respondants



Percent of survey responses within each category, n=102 to 105



Water

77%

- Irrigated Lands Regulatory Program
 - BOS support of the Coalition
 - Regional Water Quality Control Board



- Fish Friendly Farming

Incentives for Land Conservation and Agriculture

76%

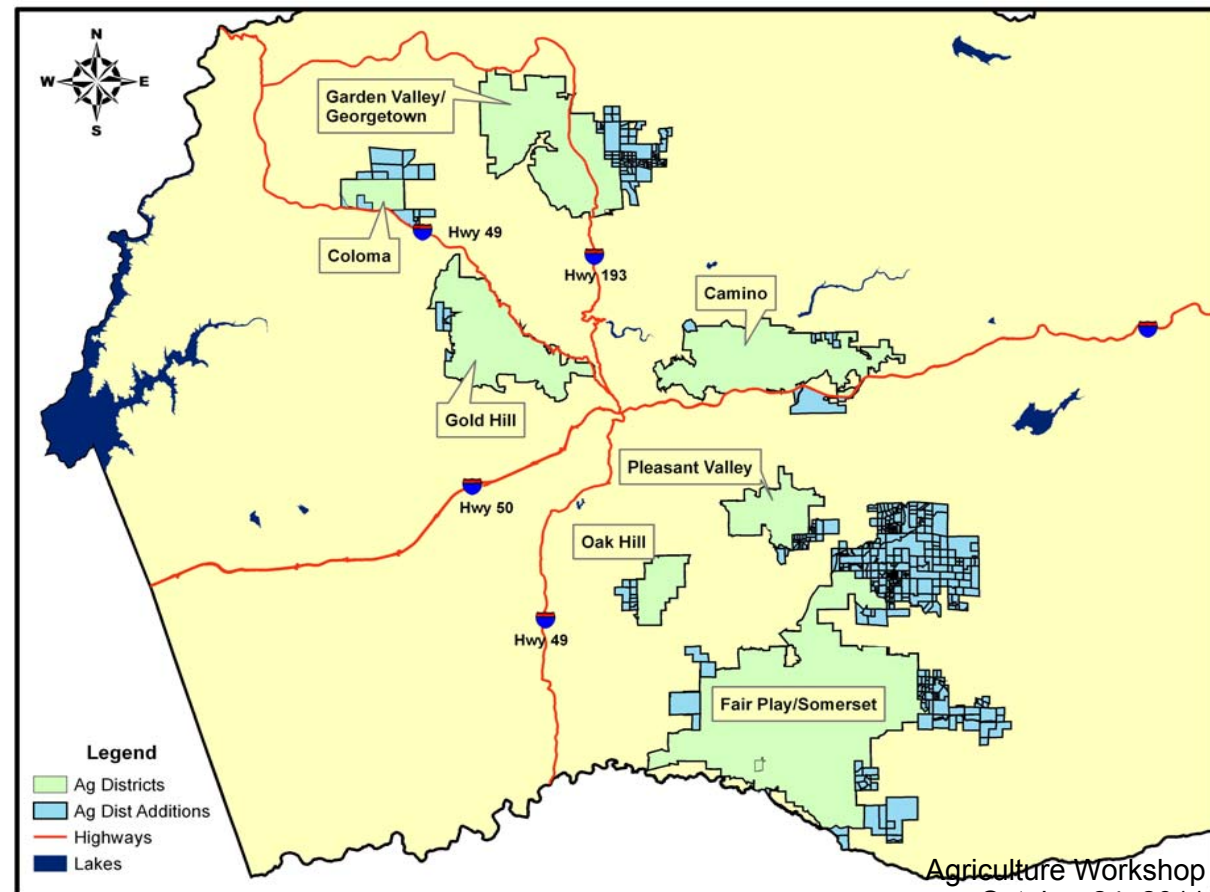
- Supporting the continuation of Williamson Act Contracts regardless of State subventions.
- AB 1265 – State bill implementing 9 year WAC's
- Implementation of GP Policy 8.1.3.4 – 1:1 mitigation measures for conservation of land suitable for agriculture (Conservation Easements) when projects convert agricultural lands to non-agricultural uses.



Support of Measure AF-J

75%

- The expansion of the existing Agricultural Districts



Agriculture Workshop

October 24, 2011

11.1189 A.10

Vineyard Soils

- Recognition that certain soils are important to the quality of El Dorado County vineyards and should be designated as “Soils of Local Importance”





Signage/Direction

75%

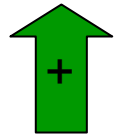
- Support and promote better signage/direction to farms and wineries
 - Along Hwy's 49, 50, & 80
 - Along County roadways



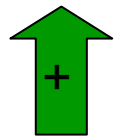
Broadband/Internet Service

64%

- Support of expansion to rural areas of the County



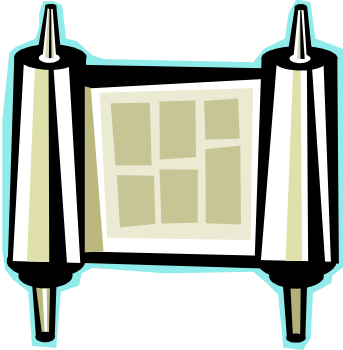
Marketing



Access to information



Proposed changes to the Zoning Ordinance



- Inclusion of more agricultural support uses on agricultural zoned lands (i.e. farm supply stores, farm equipment repair shops, nurseries, agritourism uses, etc)
- Streamlined regulations for ag employee housing
- Inclusion of Agricultural Homestays
- Support direct marketing venues
- Inclusion of Ranch Marketing on grazing lands (i.e. Dude/Guest Ranches)
- Inclusion of “Agricultural Land (AL)” land use designation and lands within the Agricultural Districts, into the Right to Farm Ordinance

Agricultural Support Services

85%

- Inclusion of more allowed uses on agriculturally zoned land; uses that support the ag industry or agritourism industry (i.e. farm equipment sales and repair shops, production facilities, vet services, nurseries & garden centers, dining facilities/restaurants, lodging facilities, campgrounds, etc.)





Ag Employee Housing

69%

- Support and identify ways to offset costs associated with development of ag labor housing
- 2013 Housing Element Update
 - Complete needs analysis of Ag Labor Housing in EDC
 - Identify policy and regulations constraining the development of ag labor housing
 - Seek funding opportunities to achieve desired outcomes from needs analysis



Agriculture Workshop

October 24, 2011

11.1189 A.16

Agricultural Homestays

53%

- Included in Draft Zoning Ordinance
- The California Agricultural Homestay Bill (AB 1258) – passed in July 1999, paved the way for more farmers and ranchers to offer tourists overnight visits.



Direct Marketing



- Support direct marketing venues (Certified Farmer's Markets, farm stands, ranch marketing, etc.)



Ranch Marketing on Grazing lands

52%

- Support inclusion into Draft Zoning Ordinance and inclusion of supportive language into General Plan during TGPA
- Incentive for grazing land to stay as grazing land and not be sold and subdivided.



Agriculture Workshop
October 24, 2011

11.1189 A.19

USDA Mobile Slaughterhouse

54%

