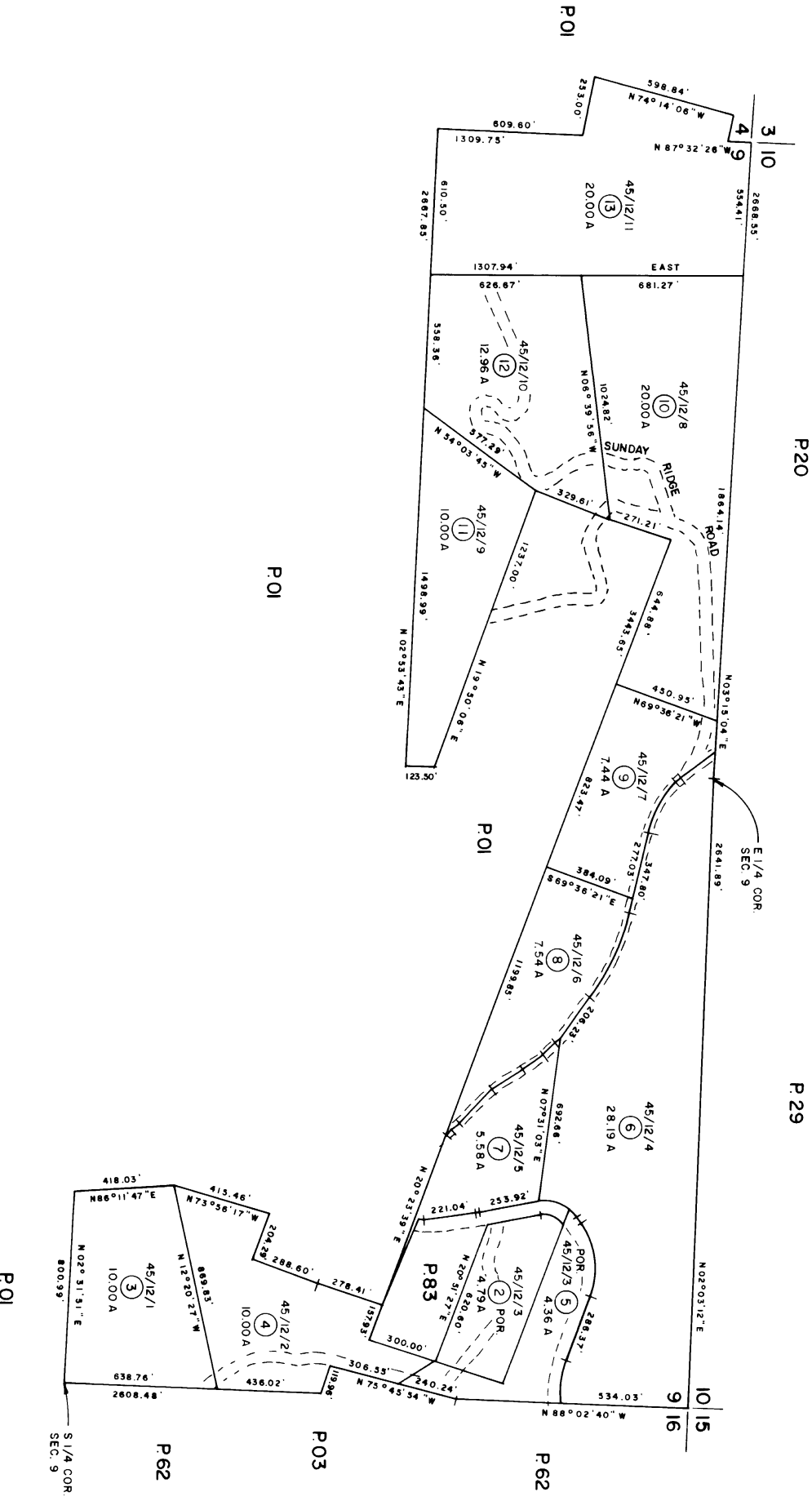


POR. SECS 4 & 9, T.9N., R.13E., M.D.M.

Tax Area Code

41:95



THIS MAP IS NOT A SURVEY. It is prepared by the El Dorado Co Assessor's office for assessment purposes only.

NOTE - Assessor's Block Numbers Shown in Ellipses Assessor's Parcel Numbers Shown in Circles