

El Dorado, County Recorder
Janelle K. Horne Co Recorder Office
DOC- 2019-0007896-00

Acct 200-VITALCHECK
Monday, MAR 11, 2019 15:19:41
Ttl Pd \$92.00 Rcpt # 0001993924
MMF/C1/1-1

TYPE OF MAP: ASSESSMENT DISTRICT

BOOK: 5 PAGE: 22

REQUESTED BY: BASS LAKE HILLS

DESCRIPTION: COMMUNITY FACILITIES DISTRICT NO 2019-1

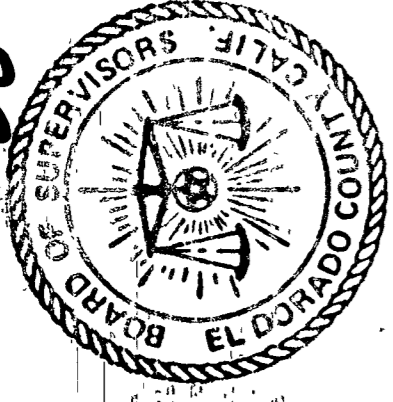
APN # 119-020-050-000, 115-040-016-000, 119-020-052-000

NO. OF MAP PAGES 1

5-22

**MAP OF PROPOSED BOUNDARIES
OF THE EL DORADO COUNTY
COMMUNITY FACILITIES DISTRICT NO. 2019-1
(BASS LAKE HILLS SERVICES)**

COUNTY OF EL DORADO
STATE OF CALIFORNIA



FILED IN THE OFFICE OF THE CLERK OF THE BOARD OF THE COUNTY OF EL DORADO THIS 26th DAY OF FEB, 2019

[Signature]
CLERK OF THE BOARD

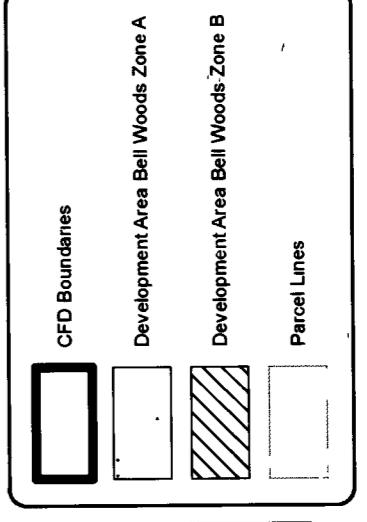
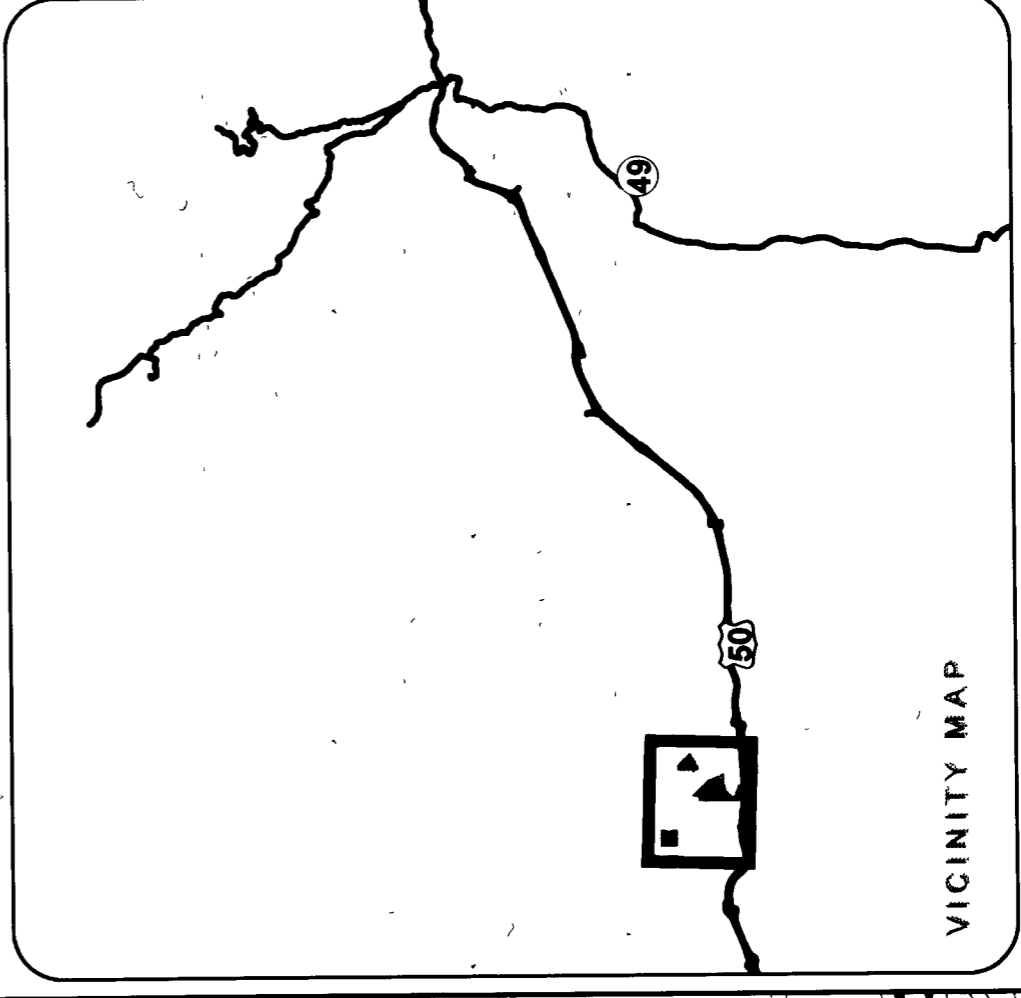
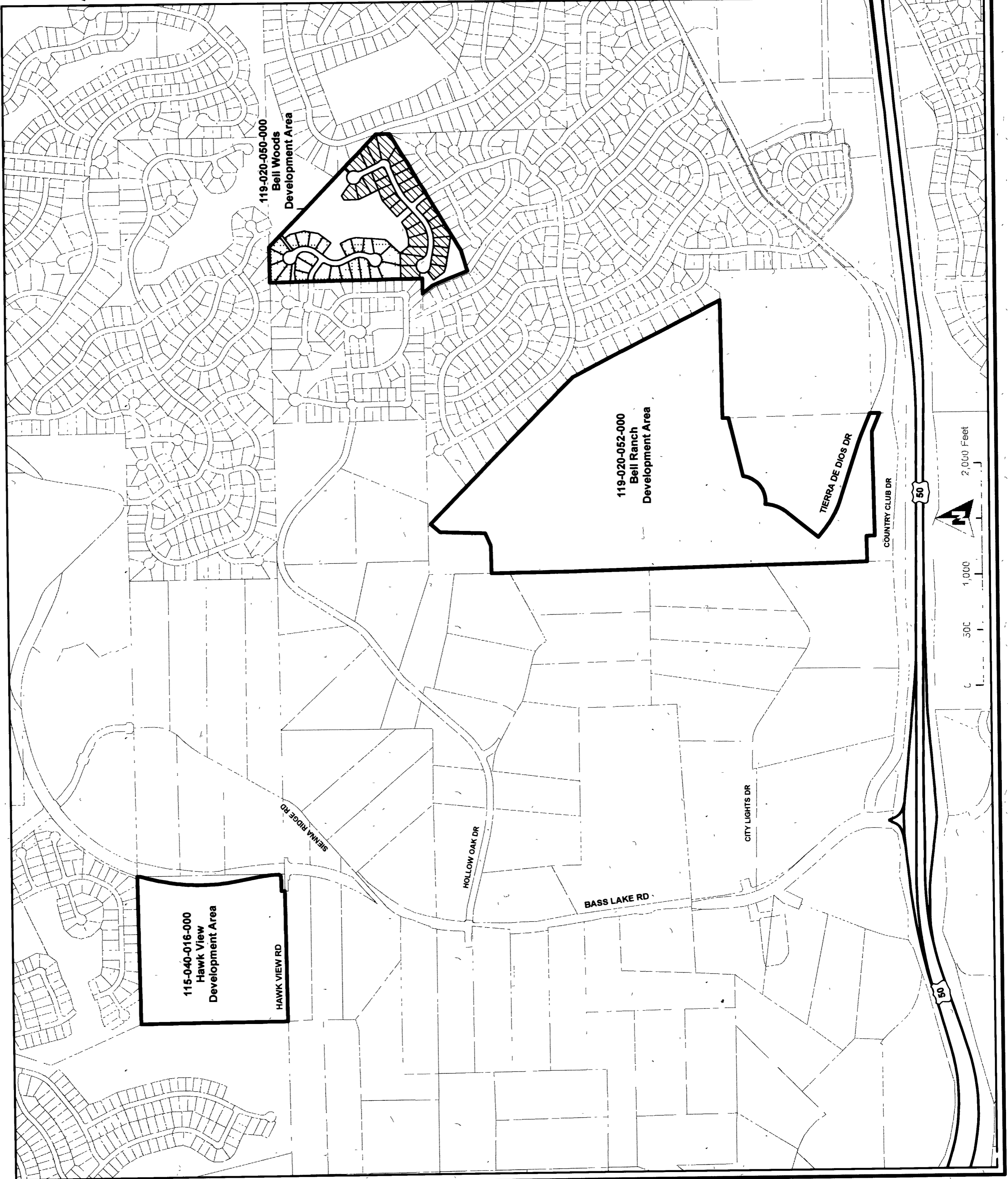
I HEREBY CERTIFY THAT THE WITHIN MAP SHOWING PROPOSED BOUNDARIES OF THE EL DORADO COUNTY COMMUNITY FACILITIES DISTRICT NO. 2019-1 (BASS LAKE HILLS SERVICES) WAS APPROVED BY THE BOARD OF SUPERVISORS OF THE COUNTY OF EL DORADO, AT A MEETING THEREOF, HELD ON THE 26th DAY OF FEB, 2019, BY ITS RESOLUTION NO. 019-2019

[Signature]
CLERK OF THE BOARD

FILED THIS 11 DAY OF March, 2019, AT THE HOUR OF 3:00 P.M. IN BOOK 5 OF MAPS OF ASSESSMENT AND COMMUNITY FACILITIES DISTRICTS, AT PAGE 22 IN THE OFFICE OF THE COUNTY RECORDER IN THE COUNTY OF EL DORADO, STATE OF CALIFORNIA

Janelle K. Horne, Deputy
Janelle K. Horne, Deputy
COUNTY RECORDER,
COUNTY OF EL DORADO

FOR PARTICULARS OF THE LINES AND DIMENSIONS OF ASSESSOR'S PARCELS, REFERENCE IS MADE TO THE MAPS OF THE ASSESSOR OF THE COUNTY OF EL DORADO, STATE OF CALIFORNIA



Source: El Dorado County GIS
Geographic Coordinate Reference: GCS North American 1983
Projection: NAD 1983 StatePlane California II FIPS 0402 Feet



5-22