

PROPOSAL TO PREPARE THE EL DORADO COUNTY INTEGRATED NATURAL RESOURCES MANAGEMENT PLAN ALTERNATIVES ANALYSIS



mintierharnish
planning consultants



HARTY
Conflict
Consulting
& Mediation

Executive Summary

Planning Partners has assembled an outstanding group of specialists with relevant experience for this project. Our proposed team of Planning Partners, Mintier Harnish, and Harty Conflict Resolution and Mediation is aware of the long and complex history leading to the development of the RFP for the Integrated Natural Resources Management Plan (INRMP), and of the competing views on many of the subject areas. Our Team's approach is to conduct a productive planning process with a focus on consensus building and mediation to develop an INRMP scope of work that is consistent with General Plan Policy 7.4.2.8.

Planning Partners, along with Mintier Harnish and Harty Conflict Resolution and Mediation, views this project as an opportunity to cooperatively guide the development of a fully compliant INRMP for the west slope of El Dorado County. Planning Partners brings a highly experienced, efficient, and well respected staff of technical specialists and planning experts, while Mintier Harnish complements the Team with planners deeply experienced in recent large-scale planning projects and alternatives development. Harty Conflict Resolution and Mediation has extensive experience in developing and facilitating highly successful, collaborative processes on technical policy issues with diverse stakeholders, the public, and government officials, including Boards of Supervisors, Planning Commissions, and scientific and citizen advisory committees. Planning Partners Services, parts 1) and 2) in just over one year of contract execution. The length of time is largely dependent on the need for administrative and public review of the several environmental documents.

Options

Optional Task 1d (1): Civil Engineer Consultation

Our Team will consult with El Dorado County Department of Transportation engineers and with Caltrans District 3 engineers and biologists for information on barrier effects, issues of retrofitting drainage structures and undercrossings, etc. If advised by those agencies, we will also consult with a licensed Civil Engineer for information on cost and feasibility of various such structural methods.

Optional Task 2a (2): Selection of Preferred INRMP Alternative

be necessary to select a preferred INRMP alternative. To accomplish that selection, we propose a series of professionally-facilitated consensus-building meetings with the PAWTAC and ISAC. After meeting first with County staff, we will meet with each committee separately to develop a clear understanding of each committee's concerns, expectations, and ideas about workable alternatives. We will then facilitate a joint committee consensus building effort intended to result in the selection of a preferred INRMP alternative.

Major Requirements

There are no major requirements that cannot be met by our team.

Major Features of our Proposal

Planning Partners and our subconsultants, Mintier-Harnish and Harty Conflict Resolution and Mediation (Team), will employ our skills to foster cooperation and strive to reach consensus with relevant parties on the definition of General Plan terms. Our approach includes beginning the process by conducting an assessment to determine how the parties can work with each other, and to provide a roadmap for the Consultant Team and County staff to collaboratively prepare the final Habitat Inventory Report and Map and the final INRMP Implementation Alternatives Report. We will assemble and analyze existing GIS and biological data and use them to compile layers and update the Initial Inventory Map. We will develop, discuss, and recommend a list of Indicator Species to assist in the selection of core habitats, wildlife movement corridors, and habitat linkages. We will research previous study reports, analyze the need for, and develop alternative locations for north-south wildlife movement corridors and linkages. We will research the feasibility and cost of the identified options, and the means to achieve and preserve them.

Our Team will assist the County in identifying alternative approaches for preparation and implementation of the INRMP. We will examine the experience of other jurisdictions, develop viable options, and analyze the advantages and disadvantages of each alternative. We will prepare an administrative draft, and a public review draft Alternatives Report based on our research. Following consensus-building meetings to choose a preferred alternative, our Team will prepare a final INRMP Implementation Alternatives Report.

Identification of Relevant Supporting Materials

Supporting materials included with this proposal (Section I, Additional Data) consist of five focused resumes of the key personnel on our Team.

PROPOSAL TO PREPARE THE EL DORADO COUNTY INTEGRATED NATURAL RESOURCES MANAGEMENT PLAN ALTERNATIVES ANALYSIS

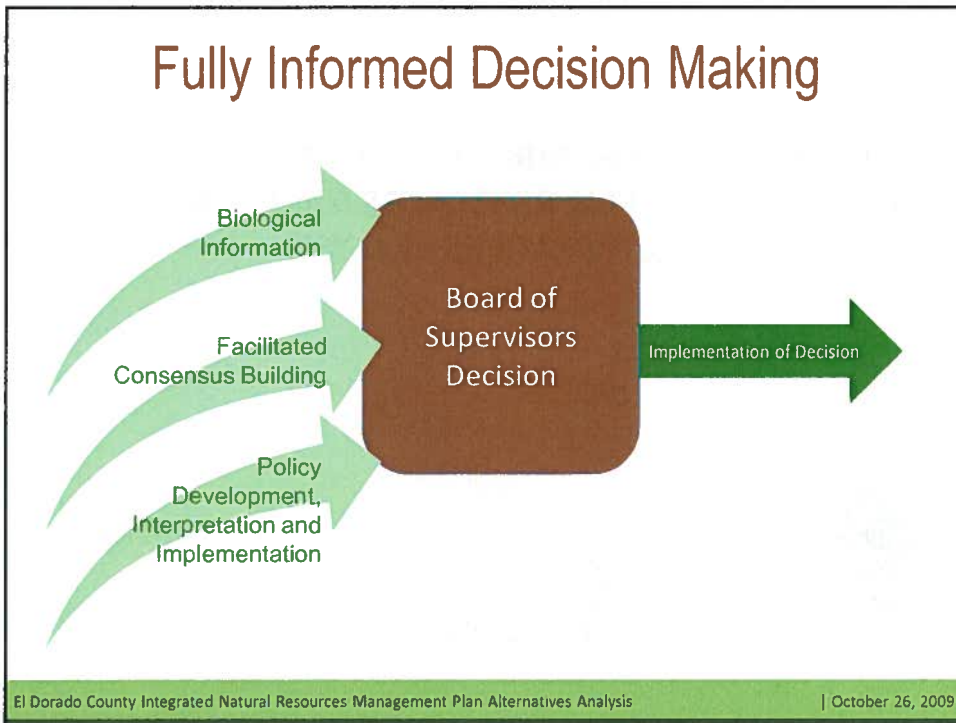


HARTY
Conflict
Consulting
& Mediation



mintierharnish
planning consultants

OUR APPROACH & TEAM

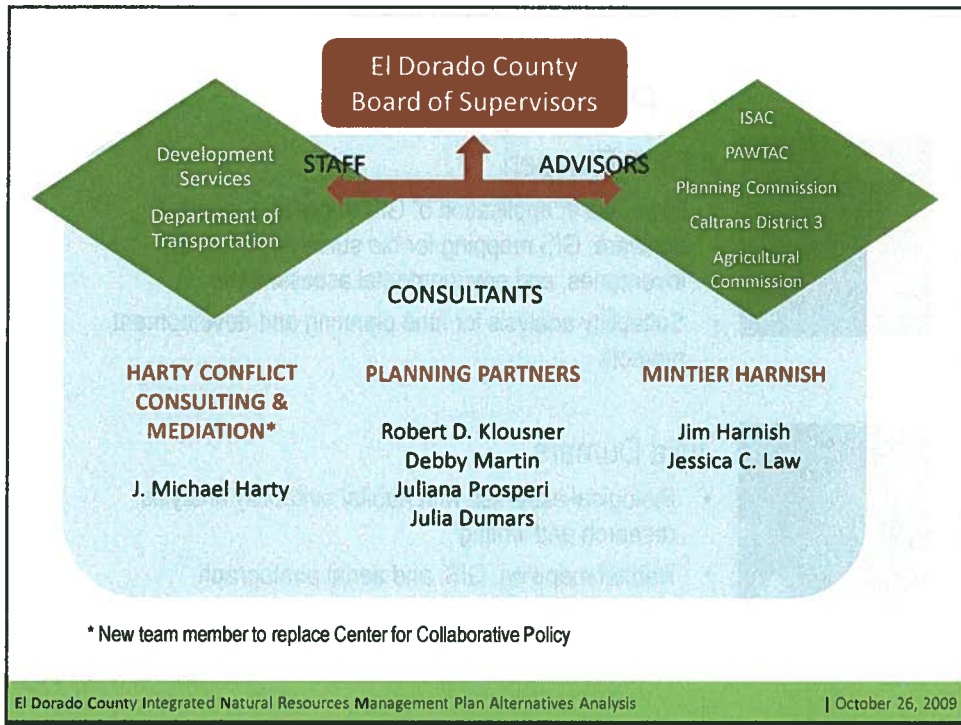


Our Approach

Focus on presenting agreements and options to the Board of Supervisors (BOS)

- Experienced team of biologists, planners, and facilitators
- Updating biological information where necessary for BOS decision making
- Focus on consensus building and decision making
- Planning for implementation alternatives based on science, feasibility, and community goals

El Dorado County Integrated Natural Resources Management Plan Alternatives Analysis | October 26, 2009



Planning Partners



Bob Klousner

- 28 years of experience as an environmental planner
- Specializes in the resolution of complex planning issues among diverse interest groups, including preservationists and environmentalists, developers, and local, state, and federal agencies



Debby Martin

- 27 years California biological experience for public and private clients
- Expertise in project management, habitat assessments, mitigation and monitoring plans, endangered species studies, agency consultation and coordination, environmental documentation, regulatory compliance

El Dorado County Integrated Natural Resources Management Plan Alternatives Analysis
| October 26, 2009

Planning Partners



Juliana Prospero

- Expertise in application of GIS decision-supported software; GIS mapping for bio surveys, resource inventories, and environmental assessments
- Suitability analysis for land planning and development projects



Julia Dumars

- Biological expertise with habitat suitability analysis, research and writing
- Habitat mapping, GIS, and aerial photograph interpretation

Mintier Harnish



Jim Harnish

- 38 years of public- and private-sector experience as land use planner and attorney
- Specializes in project management for general plans, specific plans, and large private projects; CEQA compliance; zoning and regulatory ordinance preparation; and public outreach and consensus building



Jessica Law

- Expertise in general plan alternatives analysis, policy, and implementation; and public outreach
- Recently involved with collaborative policy process (Calaveras County General Plan Update, Water Element)

HARTY Conflict Consulting & Mediation

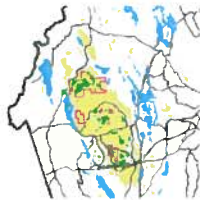
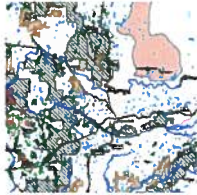


J. Michael Harty

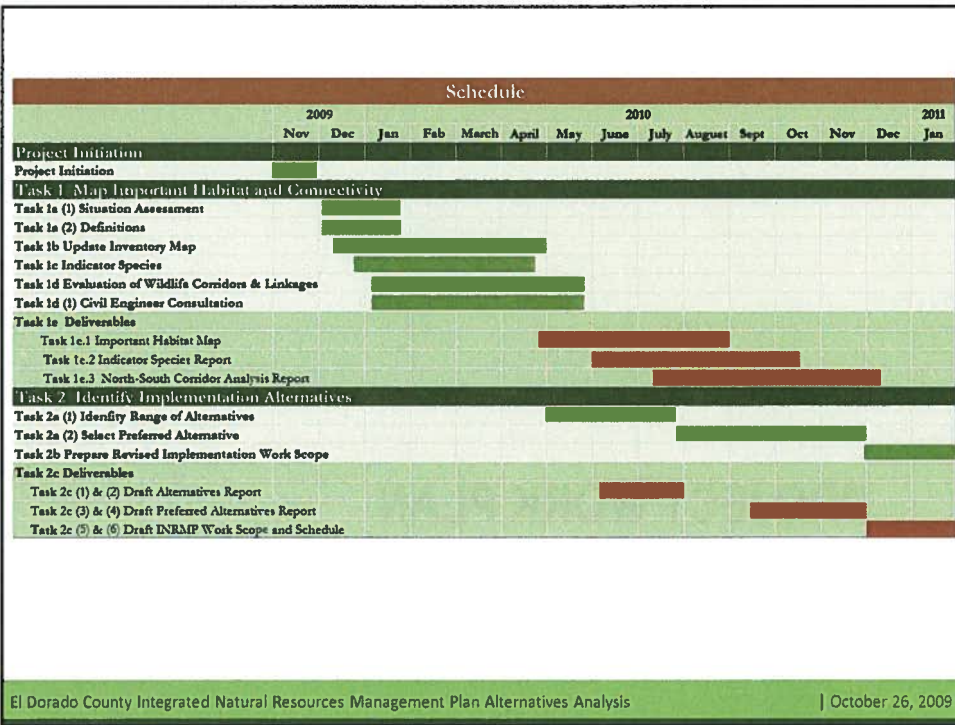
- 14 years of expertise in design, facilitation, and evaluation for public decision making processes and conflict resolution
- Specialization in natural resource issues in California and around the U.S.
- Previous assessment experience in El Dorado County related to General Plan development

PROJECT WORK PLAN

Work Plan Overview



- Assess areas of likely agreement and disagreement
- Define terms and update inventory map
- Develop and recommend indicator species
- Address wildlife movement corridors and habitat linkages
- Identify alternative approaches for preparing an INRMP
- Facilitate development of a preferred alternative
- Create INRMP implementation work scope and schedule



Task 1. Map Important Habitat Connectivity

- Task 1A (1) Situation Assessment*
- Task 1A (2) Definitions*
- Task 1B Refine Inventory Map*
- Task 1C Indicator Species*
- Task 1D Evaluation of Wildlife Corridors & Linkages*
- Task 1D(1) Civil Engineer Consultation*

TASK 1. DELIVERABLES

- Refined Habitat Map
- Indicator Species Report
- North-South Corridor Report

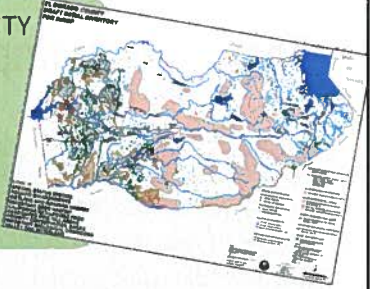
TASK 1. MAP IMPORTANT HABITAT CONNECTIVITY

- 1A (1) Situation Assessment*
- 1A (2) Definitions*
- 1B Refine Inventory Map*
- 1C Indicator Species*
- 1D Evaluation of Wildlife Corridors & Linkages*
- 1D (1) Civil Engineer Consultation*


*“Important Habitat”
“Large Expanses”
“Native Vegetation”*

- West slope below 4,000 feet elevation
- Research uses/connotations in relevant documents
- Build consensus with ISAC, PAWTAC, and BOS
- BOS final decision

TASK 1. MAP IMPORTANT HABITAT CONNECTIVITY
1A (1) Situation Assessment
1A (2) Definitions
1B Refine Inventory Map
1C Indicator Species
1D Evaluation of Wildlife Corridors & Linkages
1D (1) Civil Engineer Consultation




- Review existing map layers and documents
 - Draft initial inventory map
 - Oak Woodland Management Plan
 - Priority conservation areas
 - Other preserve lands
- Update layers as needed with new information
 - E.g. CNDDDB - over 10 new occurrences of listed species recorded since draft map



El Dorado County Integrated Natural Resources Management Plan Alternatives Analysis | October 26, 2009

TASK 1. MAP IMPORTANT HABITAT CONNECTIVITY
1A (1) Situation Assessment
1A (2) Definitions
1B Refine Inventory Map
1C Indicator Species
1D Evaluation of Wildlife Corridors & Linkages
1D (1) Civil Engineer Consultation



- Species and habitats are interrelated
- Important habitat types of western slope already mapped and identified
- Use mapping and WHRS, HSI, MIS systems as appropriate
- Set selection criteria for indicator species as appropriate
- Develop list of species for use in identifying/verifying core habitats and linkages

El Dorado County Integrated Natural Resources Management Plan Alternatives Analysis | October 26, 2009

TASK 1. MAP IMPORTANT HABITAT CONNECTIVITY

1A (1) Situation Assessment

1A (2) Definitions

1B Refine Inventory Map

1C Indicator Species

1D Evaluation of Wildlife Corridors & Linkages

1D (1) Civil Engineer Consultation



- Identify west slope species having north-south migration patterns
- Identify barriers to migration (e.g. Hwy 50 and other roadways)
- Analyze prior studies for need for crossing points
- Consult with County Department of Transportation and Caltrans
- Best locations and feasibility of retrofitting existing structures
- If appropriate, consult with private civil engineer for cost information of retrofits

Task 2. Identify Implementation Alternatives

Task 2A (1) Identify Range of Alternatives

Task 2A (2) Select Preferred Alternative

Task 2B Prepare Revised Implementation Work Scope

TASK 2. DELIVERABLES

- Alternatives Report
- Preferred Alternative Report
- Draft INMRP Work Scope/Schedule

TASK 2 IDENTIFY IMPLEMENTATION ALTERNATIVES

Task 2A (1) Identify Range of Alternatives

Task 2A (2) Select Preferred Alternative

Task 2B Prepare Revised Implementation Work Scope



- Alternatives for habitat protection, acquisition, mitigation, funding, public participation, and management
- Alternatives will address north-south wildlife corridors
- Draft Alternatives reports provide opportunities for review and comment

TASK 2 IDENTIFY IMPLEMENTATION ALTERNATIVES

Task 2A (1) Identify Range of Alternatives

Task 2A (2) Select Preferred Alternative (Optional)

Task 2B Prepare Revised Implementation Work Scope



- Consensus-building with PAWTAC and ISAC prior to BOS choosing preferred alternative
- Draft Preferred Alternatives reports provide opportunities for review and comment

TASK 2 IDENTIFY IMPLEMENTATION ALTERNATIVES

Task 2A (1) Identify Range of Alternatives

Task 2A (2) Select Preferred Alternative

Task 2B Prepare Revised Implementation Work Scope



- Complete work scope and schedule for preparation of the INRMP
- Detailed description of objectives, end products, required services, key milestones, and schedule
- Opportunities for review and comment by staff and advisors
- Ensure consistency with General Plan policy and programs

DECISION MAKING PROCESS

Explicit Focus on Consensus

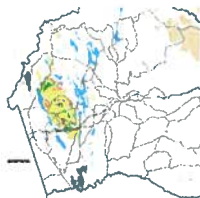
- Consensus as process and outcome
 - Agreement on a definition
 - Explicit, transparent decision making structure and expectations
- Assessing for interests: INRMP content, process, people
- Values
- Whether and How
- Convergence: narrowing differences

Steps to Build Consensus

- BOS role endorsement
- Assess and design approach
- Explore interests, values, and options with committees
- Engage BOS at key decision points
- Deliverables:
 - Final Implementation Alternatives Report
 - Acceptance of process

WHY CHOOSE OUR TEAM

Why Choose Our Team



- Unique recognition of the nature of the task
- Team developed to respond to the task
- Endangered species, biology, and GIS experience
- Conflict resolution expertise
- Project management
- General plan expertise
- Local knowledge
- Focus on decision making process

