

# **El Dorado County General Plan Biological Policies**

---

**October 7, 2014**

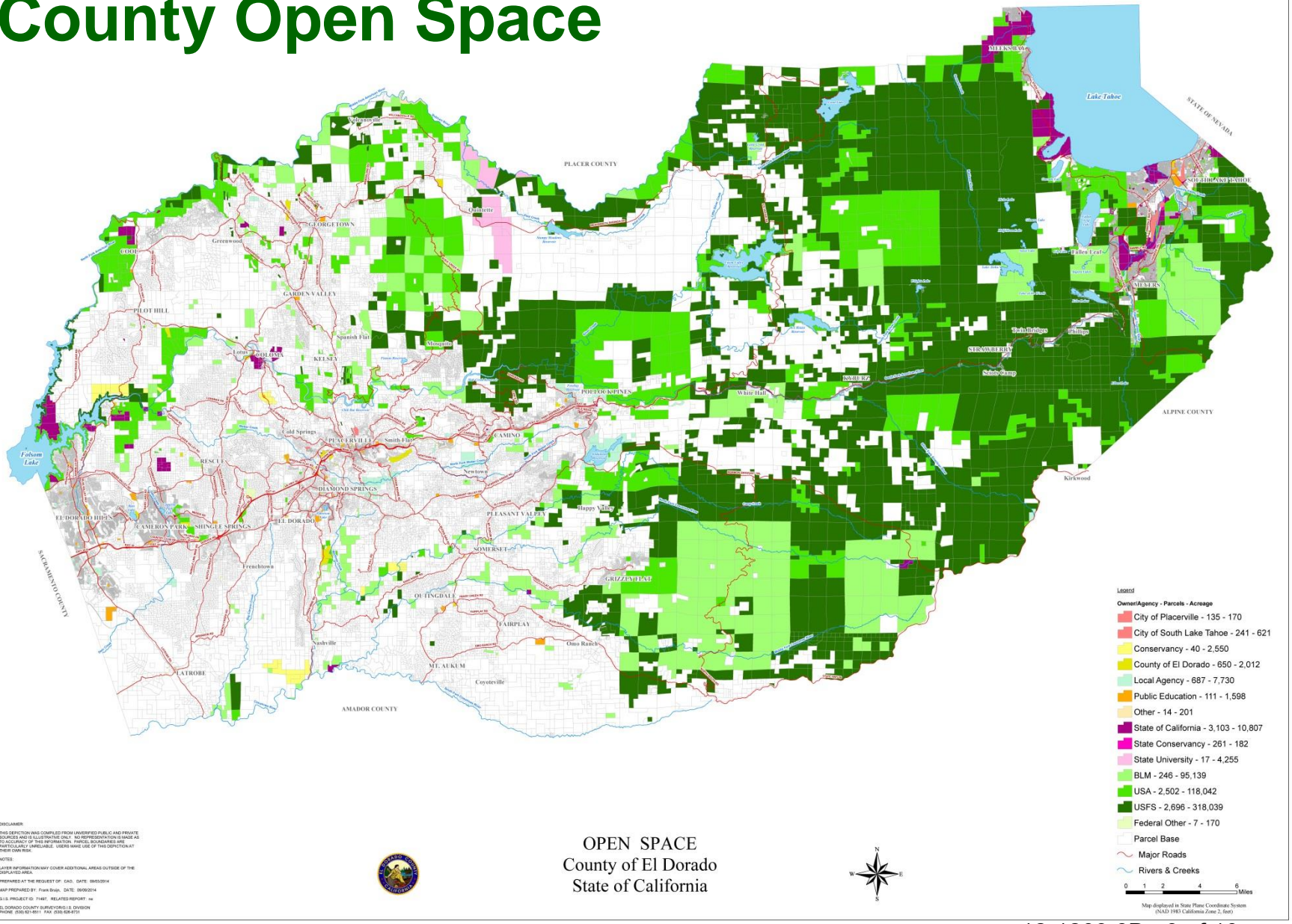


# July 28, 2014 BOS Meeting Summary

- **Review of General Plan Biological Policies**
- **Historic timeline and current status**
- **General Plan objectives and local issues**
- **Conservation vs. mitigation**
- **Oak canopy vs. oak woodland mapping**
- **Options review and comparison:**
  - **Option 1: Compliance with State/Federal Regulations**
  - **Option 2: Mitigation Approach**
  - **Option 3: Mitigation/Conservation Approach**
  - **Option 4: Conservation Approach**
- **Board requested further information**



# County Open Space

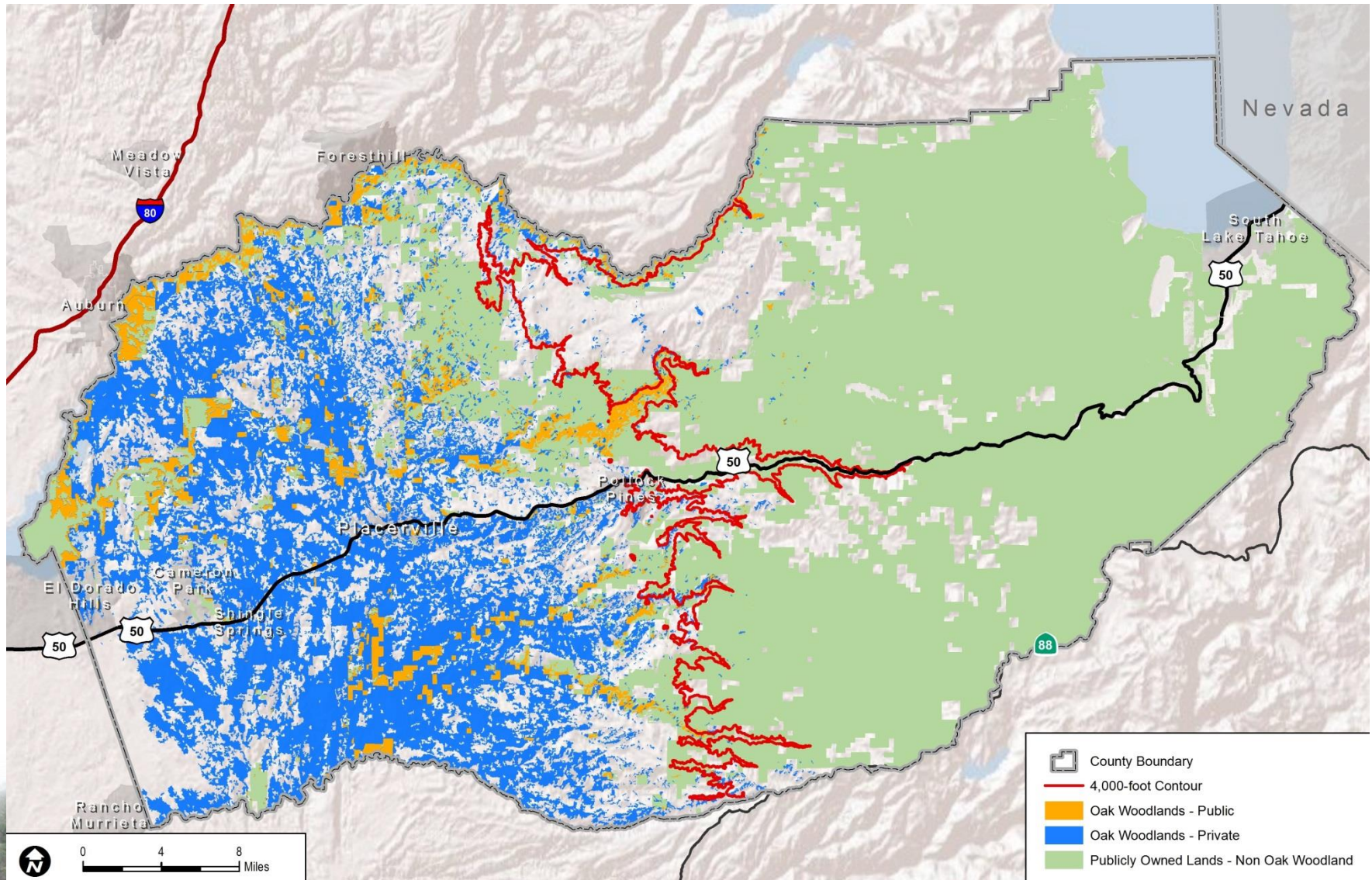


OPEN SPACE  
County of El Dorado  
State of California





# Oak Woodlands in Open Space





# Infill/Moderate Income Housing Project



- **5.08-acre site**
- **1.35 acres of oak woodland on site**
- **Development examples:**
  - 1 - Full development (2.45 acres developed)
  - 2 - Woodland-avoidance (1.91 acres developed)
- **Four broad policy options evaluated for each example**
- **Assumptions:**
  - Conservation easements acquired at a 2:1 ratio
  - In-lieu fee payment is \$4,700/acre or \$100/ inch
  - Oak tree replacement at inch-for-inch basis
  - Replacement trees maintained for 7 years

# Full Development Scenario



- **Policy Option 1: Compliance with State and Federal Regulations**
  - Mitigation of woodland impacts and any special-status species as defined in GP, mitigation must meet state and fed standards
- **Policy Option 2: Mitigation Approach**
  - Mitigation of woodland AND tree impacts, also GP-defined special status species with mitigation to meet County standards including prohibition on barriers to wildlife movement where applicable
- **Policy Option 3: Mitigation/Conservation Approach**
  - Mitigation of woodland OR tree impacts, also GP-defined special status species with mitigation to meet County standards including PCA/IBCs
- **Policy Option 4: Conservation Approach**
  - Mitigation of woodland AND tree impacts as well as INRMP-defined special status species with mitigation to meet County standards



# Woodland Avoidance Scenario



- **Policy Option 1: Compliance with State and Federal Regulations**
  - Mitigation for any special-status species as defined in GP, mitigation must meet state and fed standards
- **Policy Option 2: Mitigation Approach**
  - Mitigation for individual tree impacts and GP-defined special status species with mitigation to meet County standards including prohibition on barriers to wildlife movement where applicable
- **Policy Option 3: Mitigation/Conservation Approach**
  - Mitigation may be required for individual tree impacts depending on specific policy and ORMP, also GP-defined special status species with mitigation to meet County standards including PCA/IBCs
- **Policy Option 4: Conservation Approach**
  - Mitigation required for individual tree impacts and INRMP-defined special status species with mitigation to meet County standards including PCA/IBCs

# Comparison of Options

	Option 1	Option 2	Option 3	Option 4
<b>Oak Woodland Management Plan</b>	No	No	Yes	Yes
<b>Priority Conservation Areas</b>	No	No	Yes	Yes
<b>Important Biological Corridors</b>	No	No	Yes	Yes
<b>Integrated Natural Resources Management Plan</b>	No	No	No	Yes
<b>Self-Implementing Policies</b>	No	Yes	Yes	Yes
<b>Initial Relative Costs</b>	Low	Medium	Medium-High	High
<b>Timeframe for Implementing</b>	15 months	18 months	20-24 months	36 months
<b>Long-term Relative Staff Time/Cost</b>	High	Medium-High	Low	Medium-High
<b>Comparable Counties</b>	Alpine, Amador, Plumas, Sierra	Alpine, Amador, Butte, Calaveras, Nevada, Plumas, Tehama	Butte, Nevada, Placer, Tehama, Tuolumne	None Identified



# Questions for Consideration

- If the six biological resources policies are removed, do state and federal policies suffice?
- Which of the four options presented at the July 28th workshop is most effectively self-implementing (doesn't need further clarification, interpretation or policy determination)?
- Which option best addresses the General Plan objectives for development along the Highway 50 corridor in areas with existing roads and infrastructure (public water/sewer), while best retaining Highway 50 corridor habitat connectivity value?
- If the OWMP is removed, how are cumulative impacts addressed for individual projects?



# Next Steps

- Board Direction on Policy Option
- Resolution of Intention (ROI) Adoption
- Public Outreach
- Draft Policy Preparation
- Preparing Any Necessary Documents
- Environmental Review

