

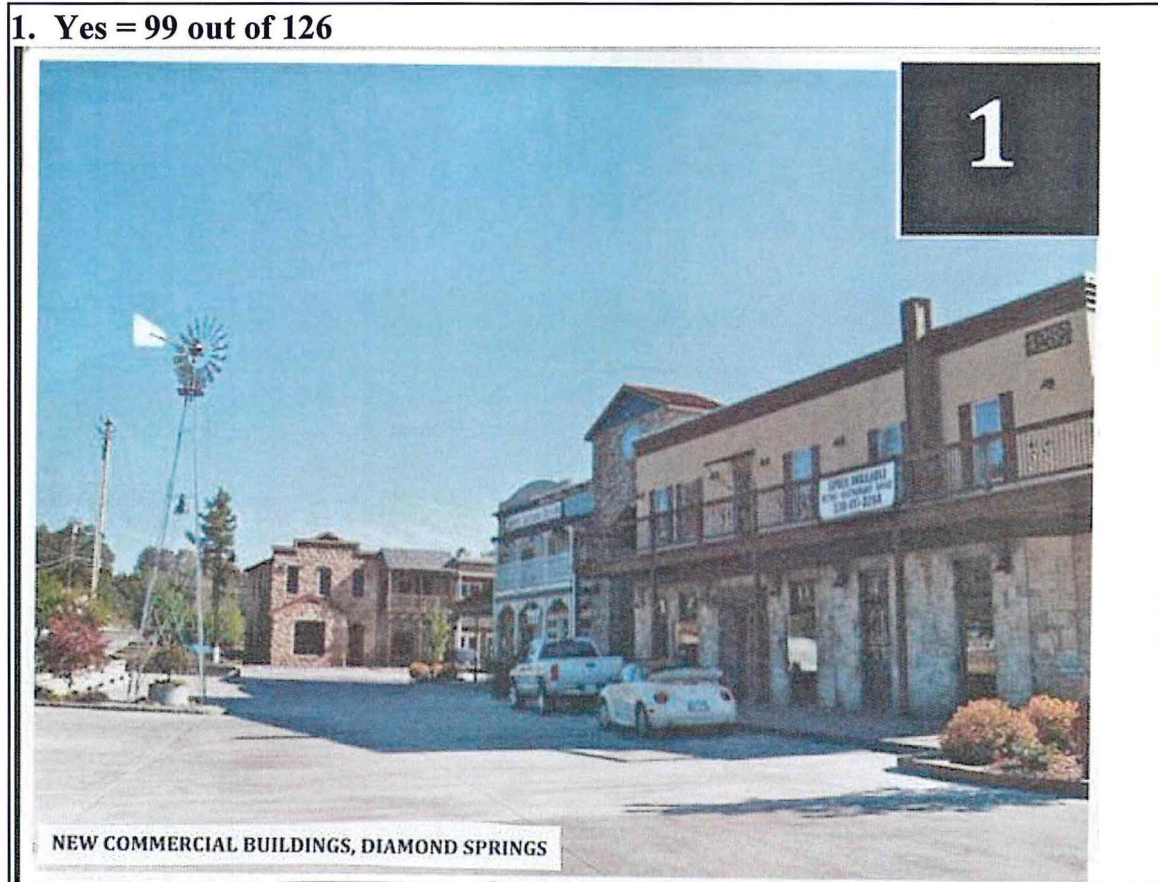
DESIGN GUIDELINES SURVEY FORM

SHINGLE SPRINGS COMMUNITY MEETING JUNE 5, 2013

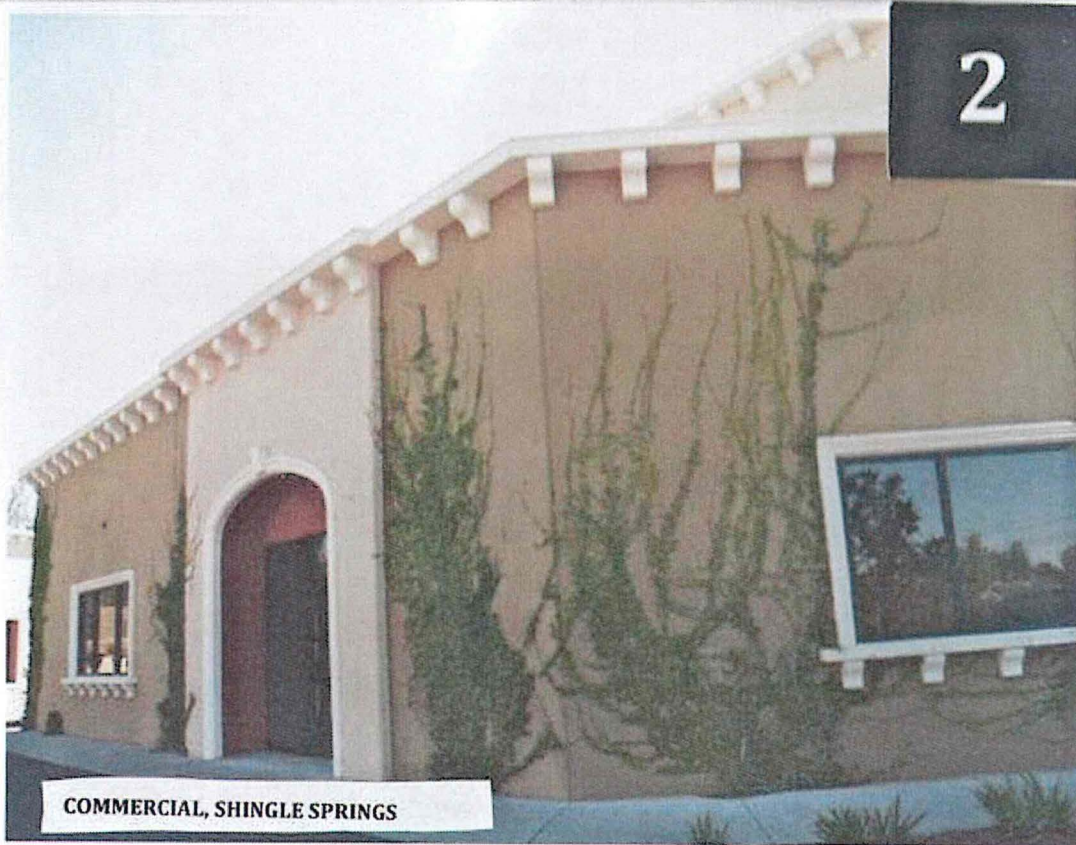
RESULTS FROM SURVEYS COLLECTED THROUGH JUNE 19, 2013

Do you recommend this type of design for the Shingle Springs Town Site Core Area?

1. Yes = 99 out of 126



2. Yes = 26 out of 126



3. Yes = 36 out of 126



4. Yes = 67 out of 126



4

COMMERCIAL, UNKNOWN LOCATION

5. Yes = 13 out of 126

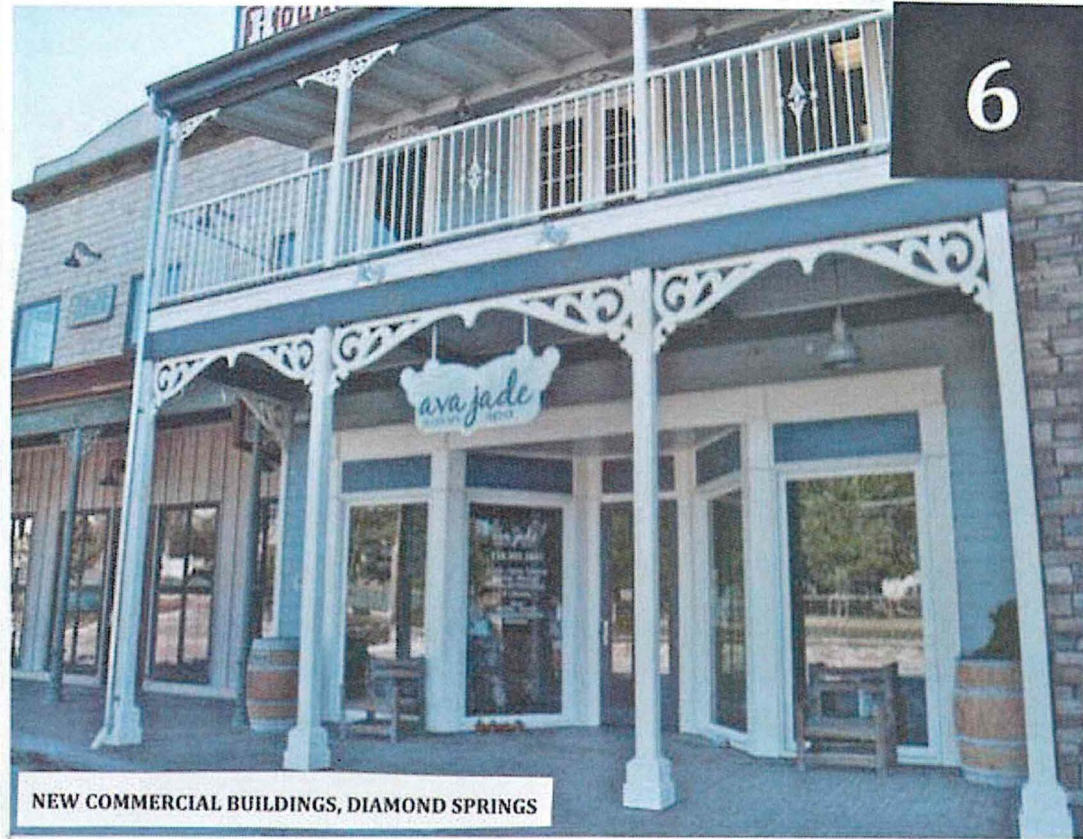


5

Commercial

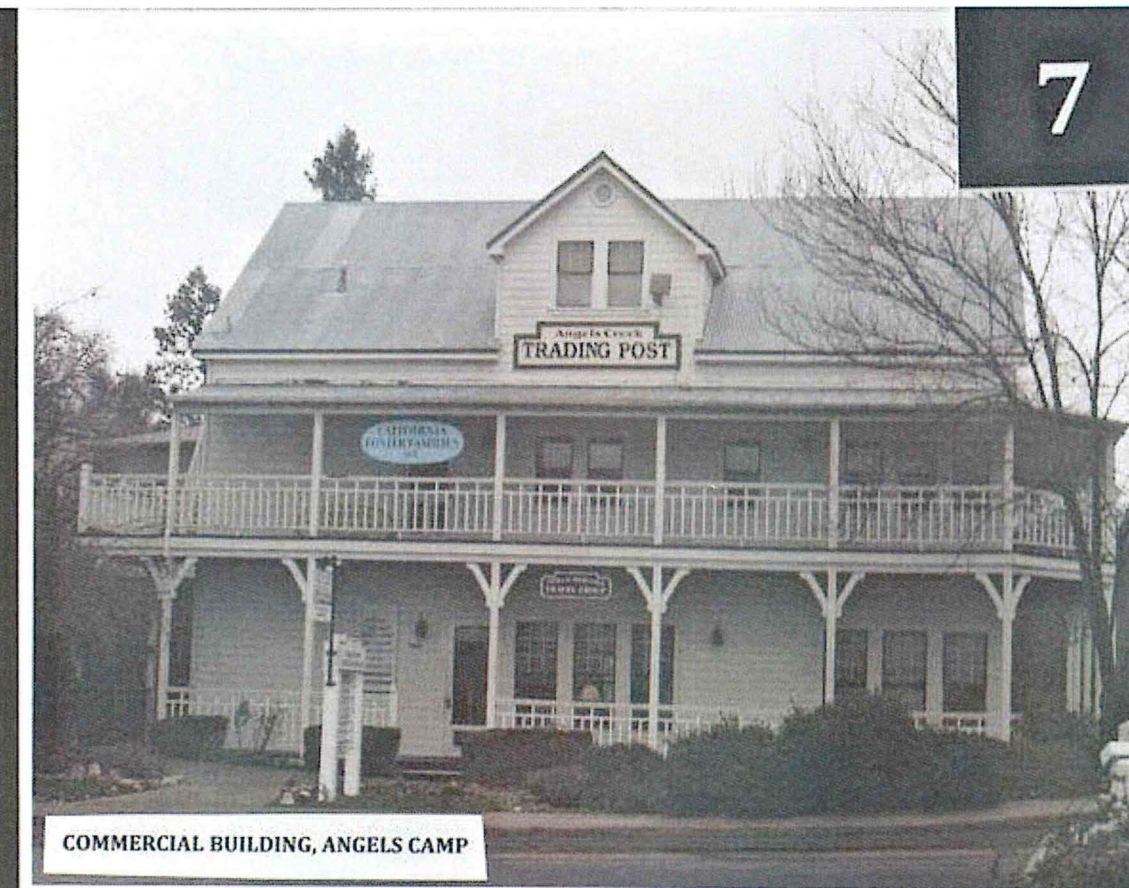
INDUSTRIAL PARK, SHINGLE SPRINGS

6. Yes = 108 out of 126



NEW COMMERCIAL BUILDINGS, DIAMOND SPRINGS

7. Yes = 108 out of 126



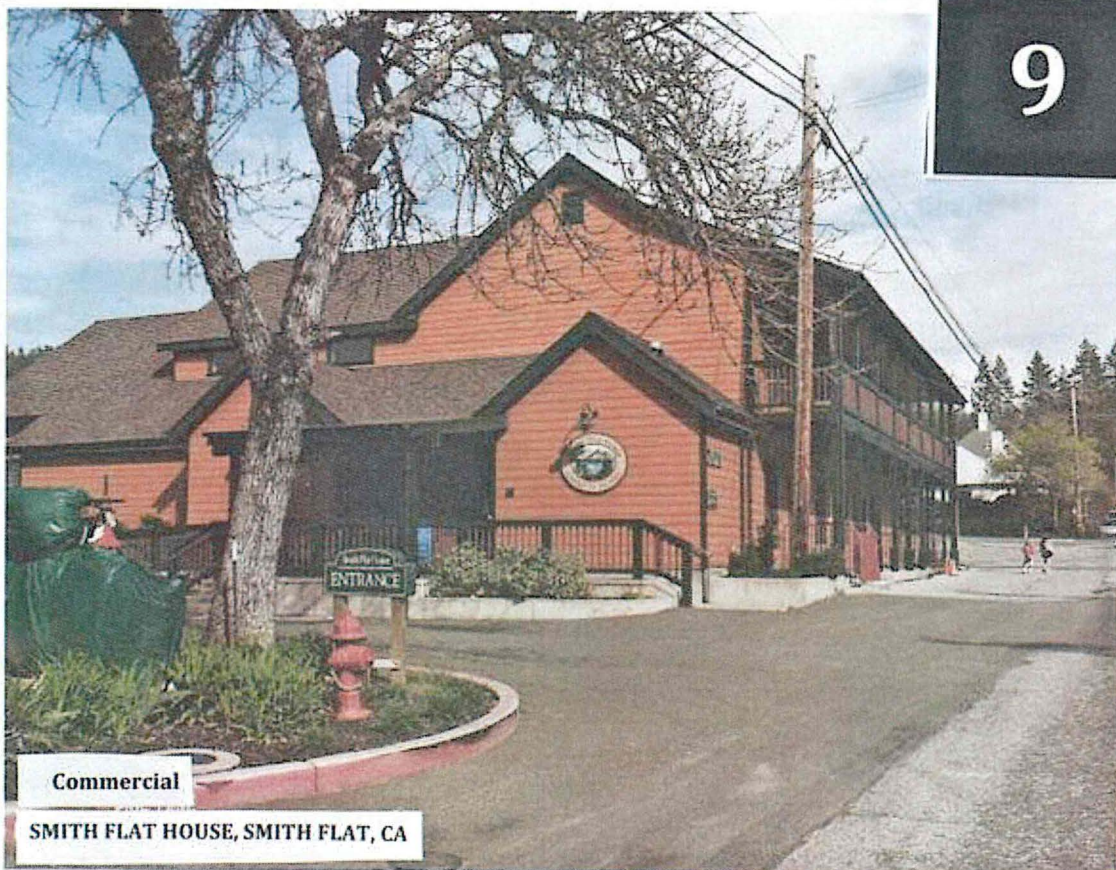
COMMERCIAL BUILDING, ANGELS CAMP

8. Yes = 83 out of 126



COMMERCIAL, UNKNOWN LOCATION

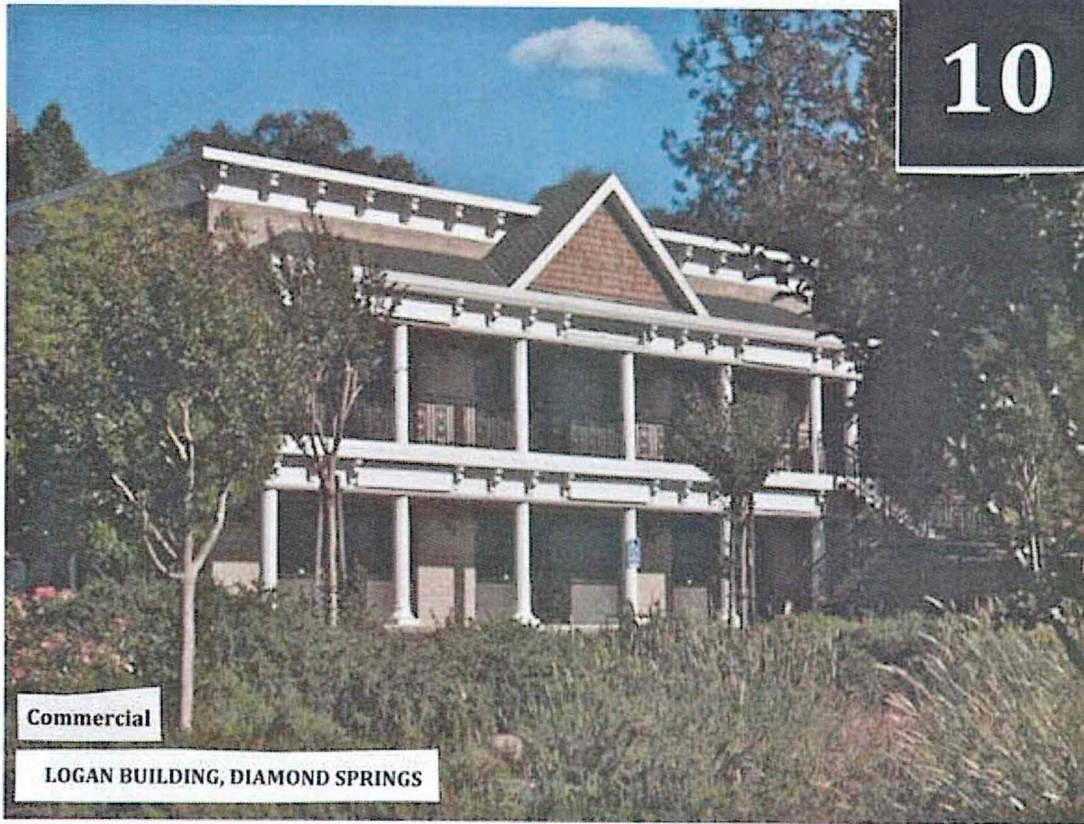
9. Yes = 88 out of 126



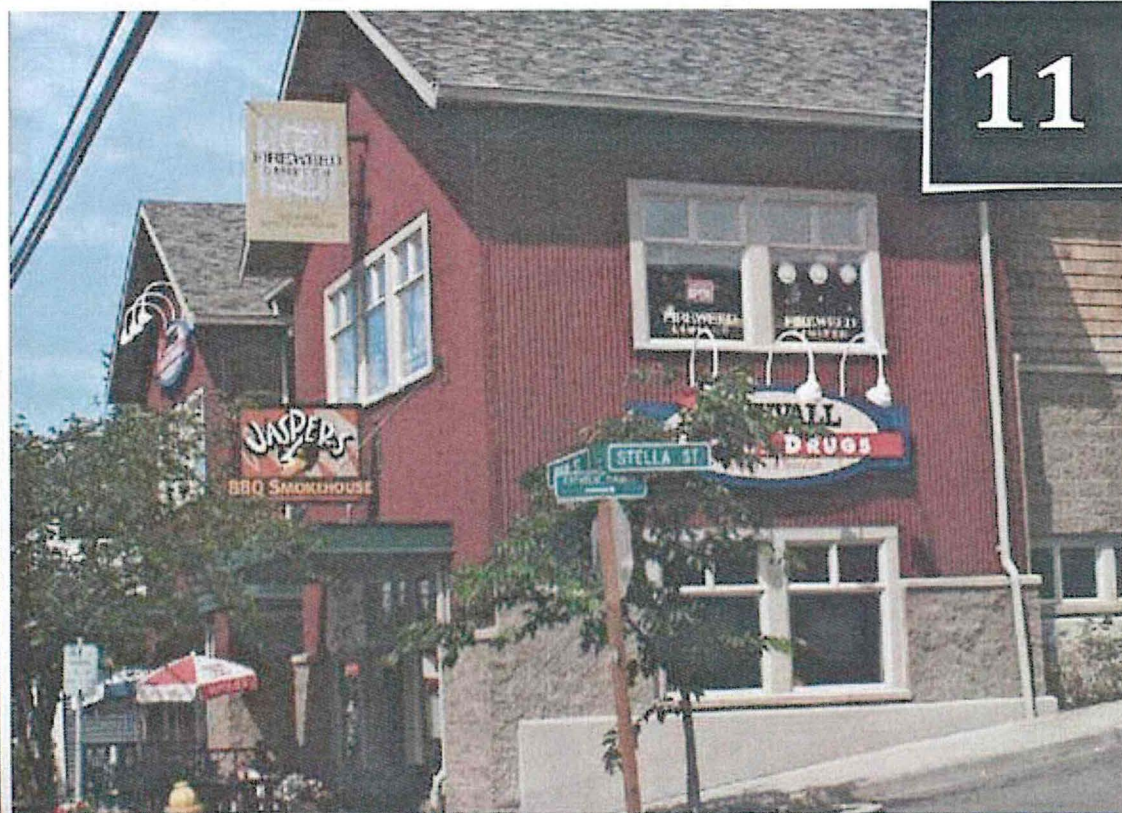
Commercial

SMITH FLAT HOUSE, SMITH FLAT, CA

10. Yes = 91 out of 126



11. Yes = 91 out of 126



COMMERCIAL, UNKNOWN LOCATION

12. Yes = 21 out of 126



COMMERCIAL, CAMERON PARK

13. Yes = 83 out of 126



Commercial

14. Yes = 10 out of 126



15. Yes = 74 out of 126



16. Yes = 15 out of 126



17. Yes = 111 out of 126



18. Yes = 89 out of 126



19. Yes = 27 out of 126



20. Yes = 39 out of 126



21. Yes = 96 out of 126



22. Yes = 5 out of 126

22



Multi-Family

APTS, HWY 50 AT ZINFANDEL

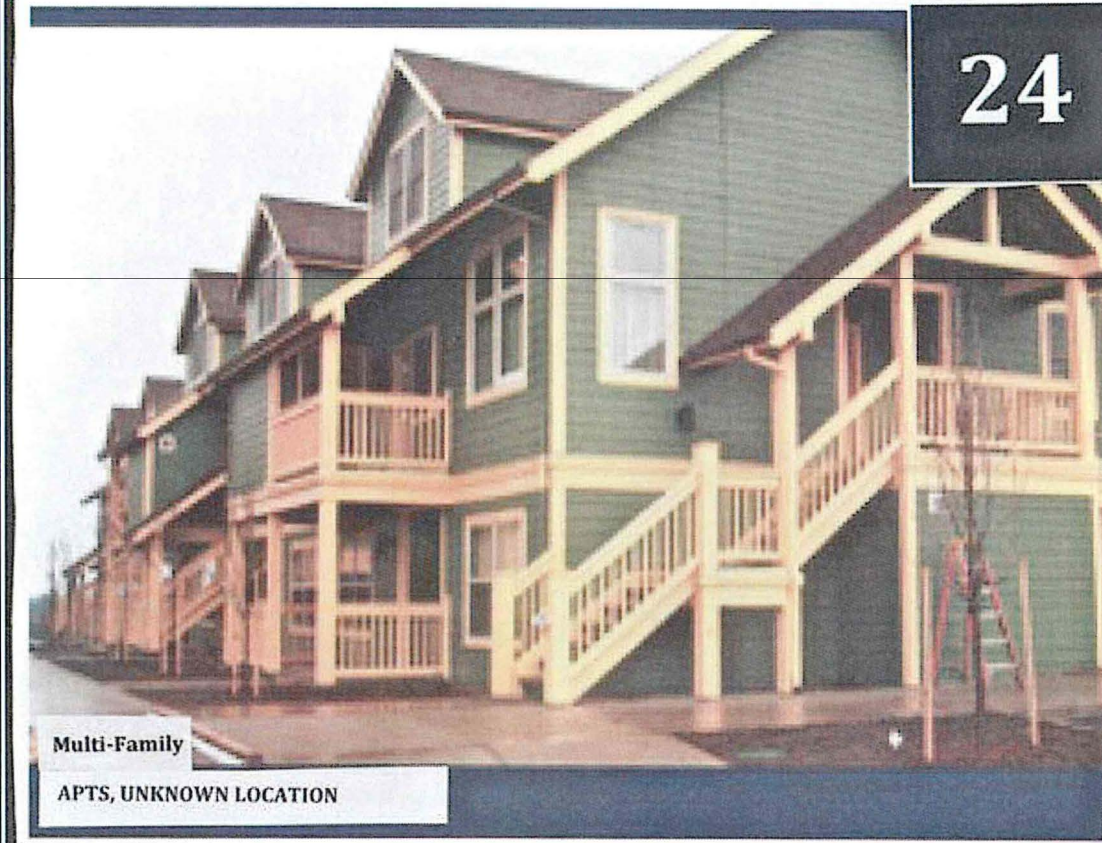
23. Yes = 3 out of 126

23



MULTI-FAMILY, DAVIS

24. Yes = 68 out of 126



24

Multi-Family

APTS, UNKNOWN LOCATION

25. Yes = 15 out of 126

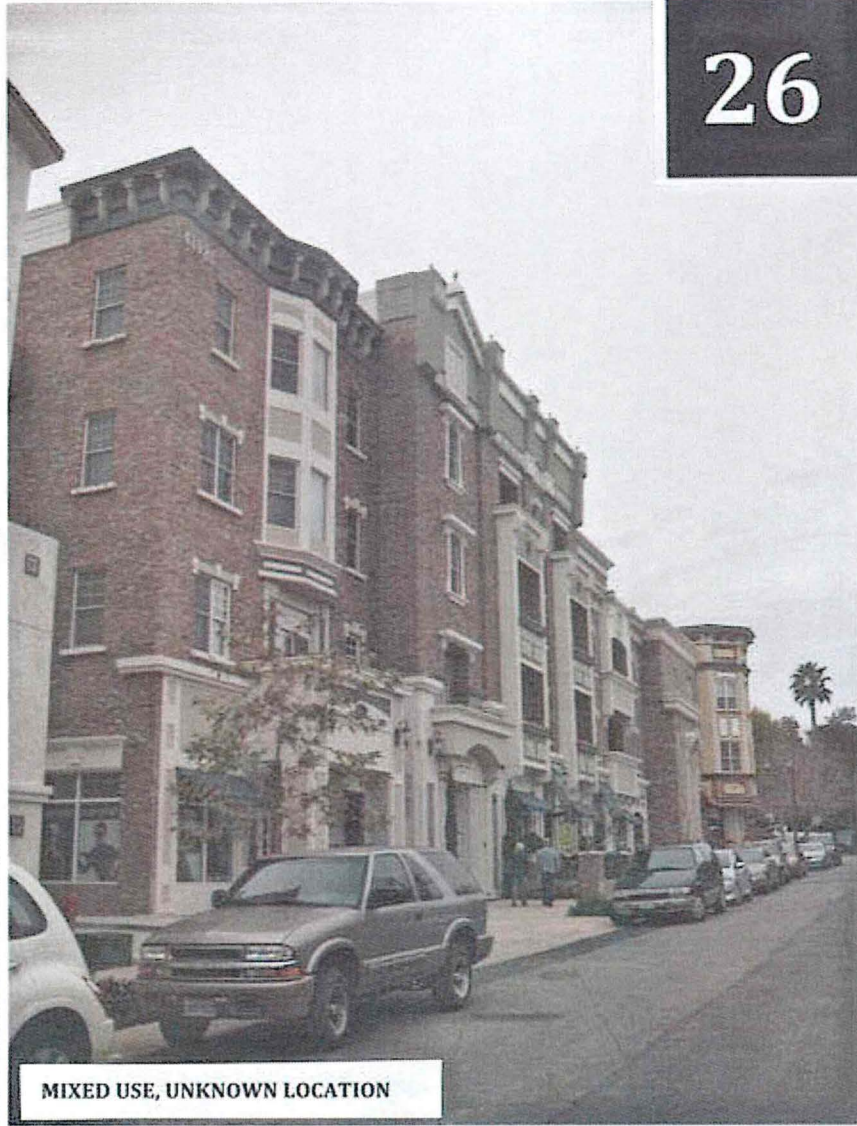


25

MIXED USE DEVELOPMENT, OREM, UT

26. Yes = 49 out of 126

26



MIXED USE, UNKNOWN LOCATION

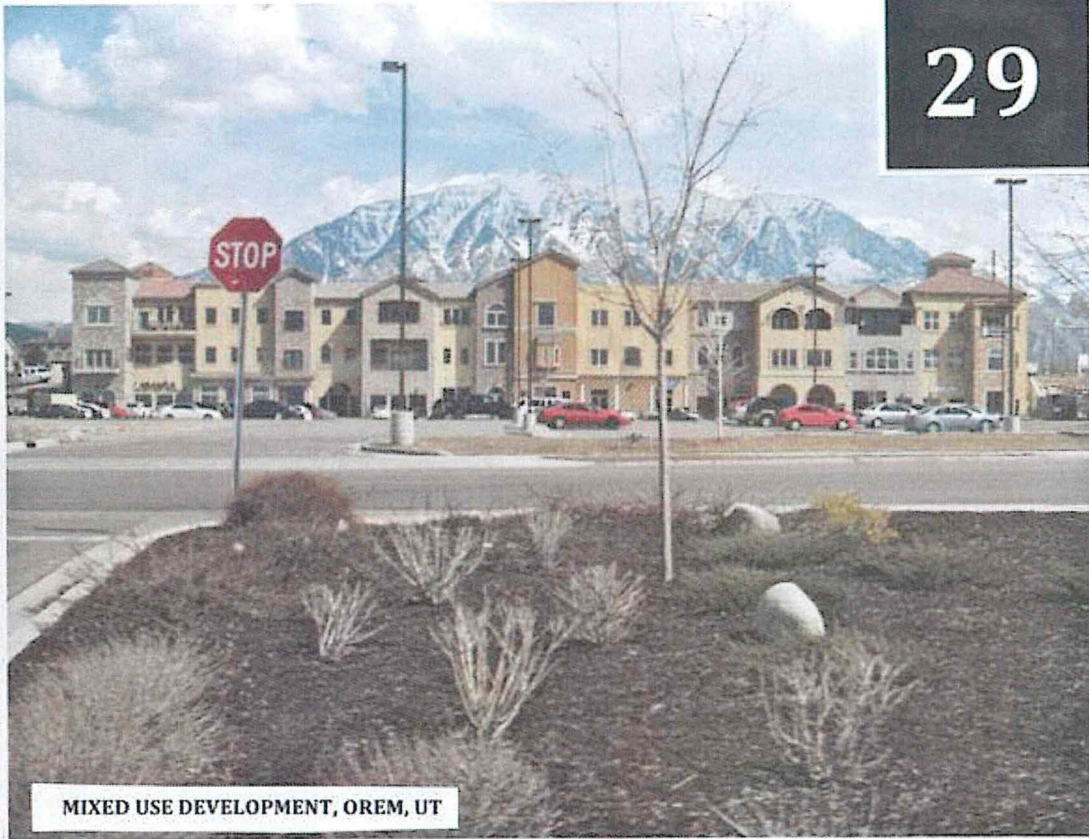
27. Yes = 16 out of 126



28. Yes = 3 out of 126



29. Yes = 13 out of 126



MIXED USE DEVELOPMENT, OREM, UT

30. Yes = 68 out of 126

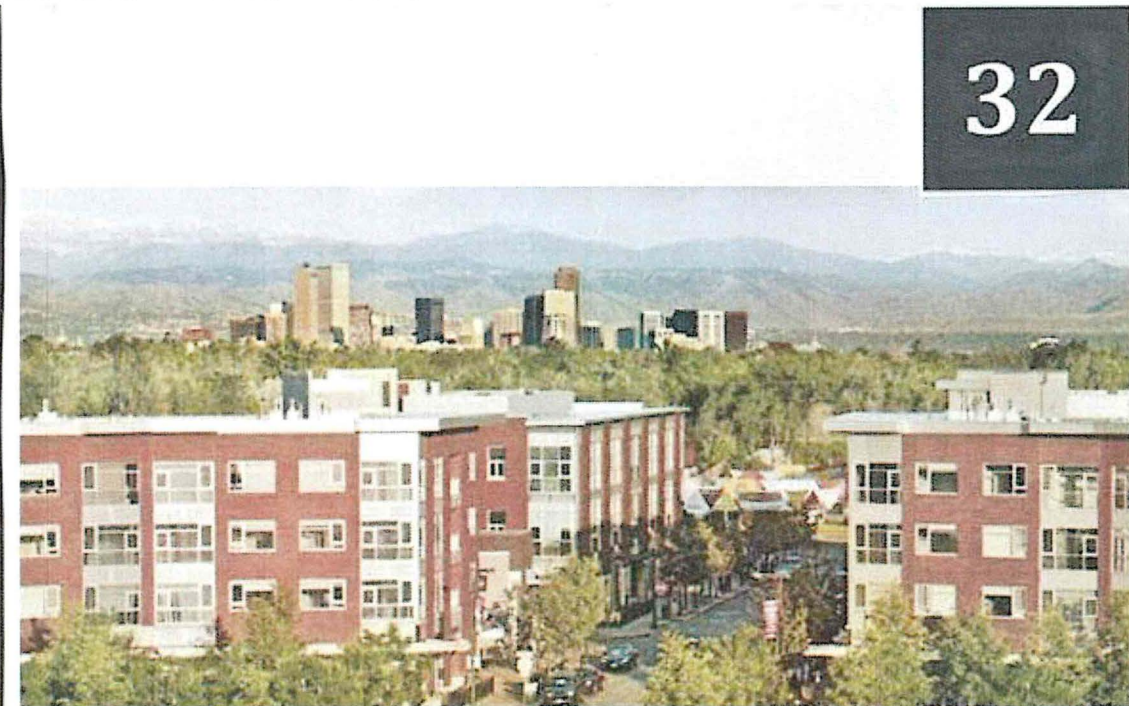


MULTI-FAMILY, UNKNOWN LOCATION

31. Yes = 10 out of 126



32. Yes = 2 out of 126



Multi-Family

33. Yes = 79 out of 126



33

34. Yes = 48 out of 126



34

35. Yes = 10 out of 126

35



Multi-Family
MERCY SUNSET APTS, SHINGLE SPRINGS

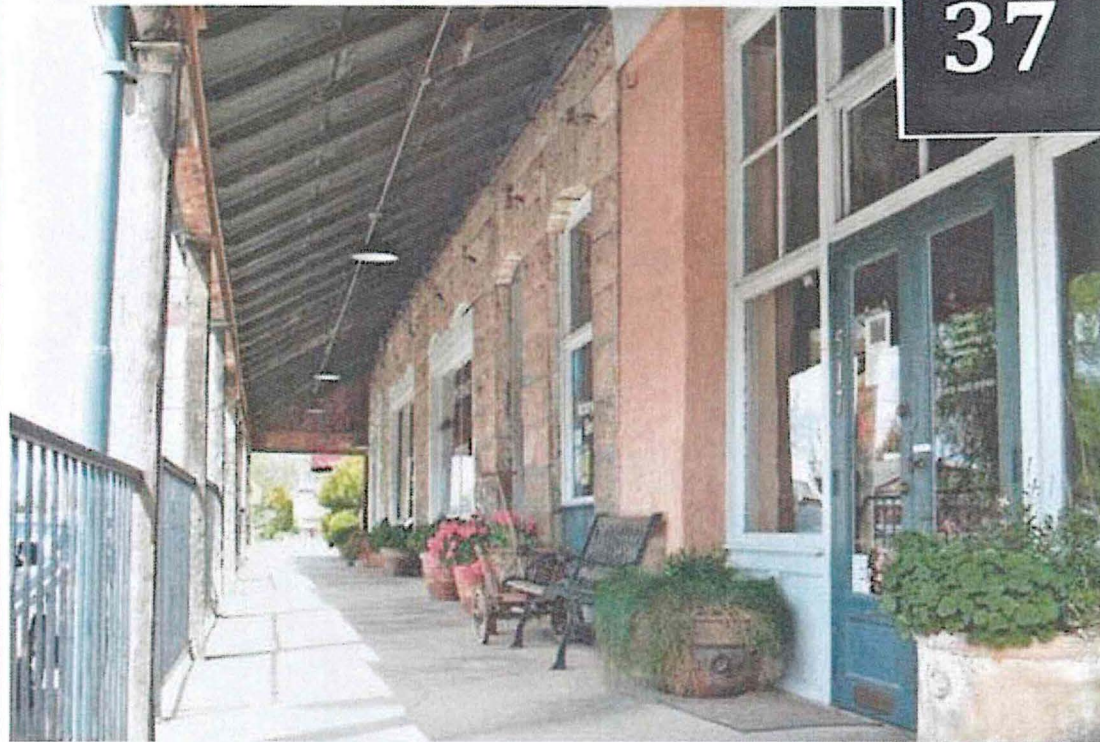
36. Yes = 8 out of 126

36



Multi-Family
SMART GROWTH APTS, RANCHO CORDOVA

37. Yes = 106 out of 126



COMMERCIAL, DIAMOND SPRINGS

38. Yes = 86 out of 126



Architectural Element

HISTORIC RAILROAD HOME, SHINGLE SPRINGS

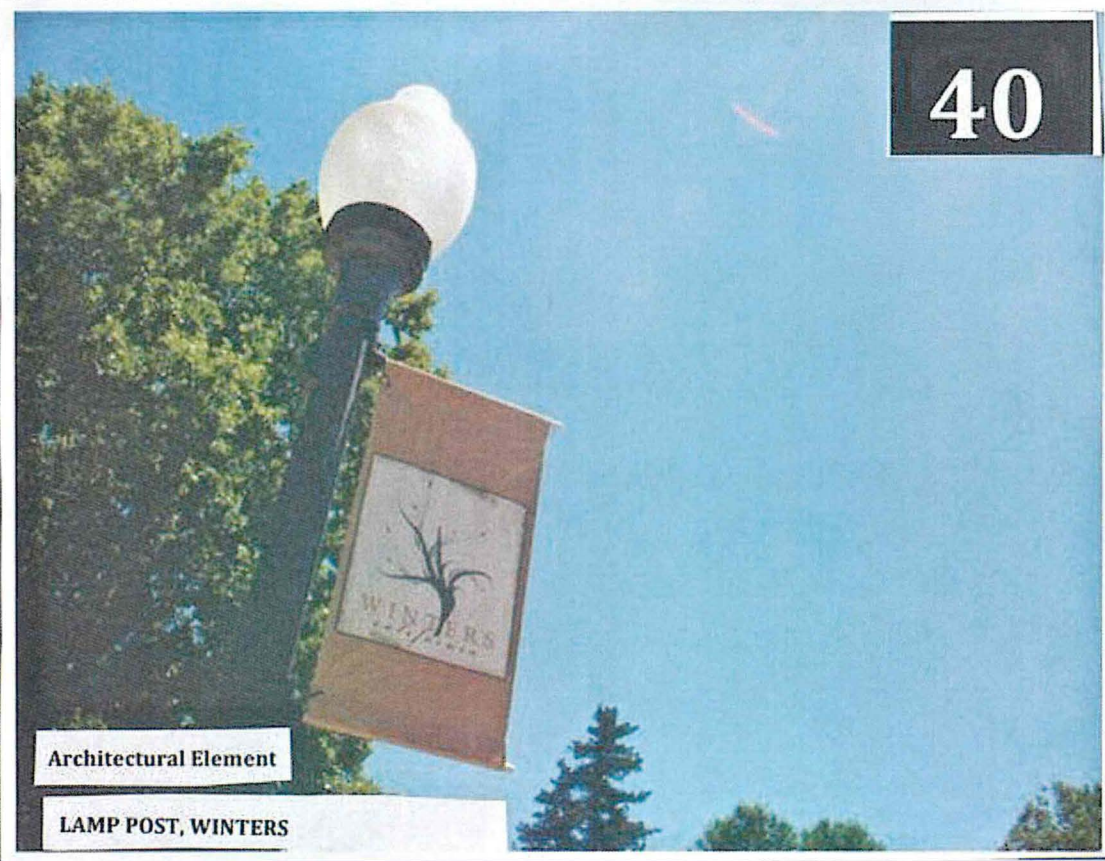
39. Yes = 62 out of 126



Public Space Architectural Element

PUBLIC RESTROOMS, WINTERS

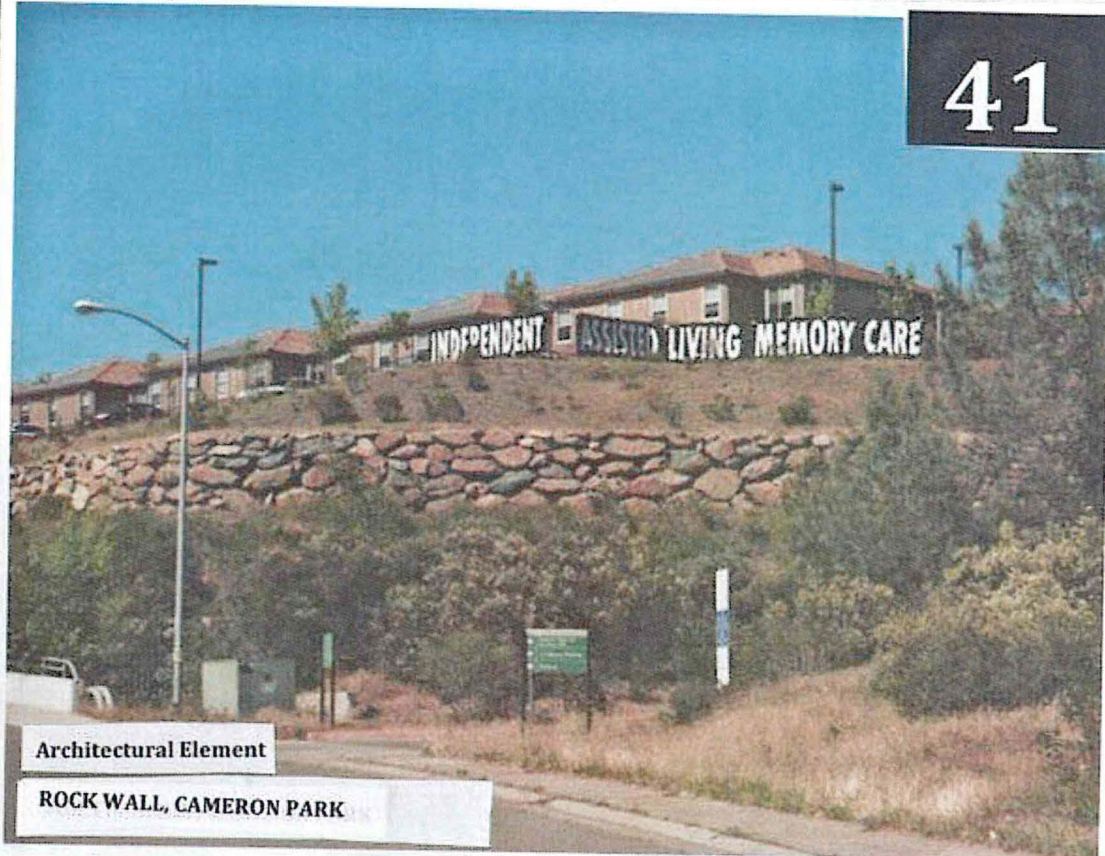
40. Yes = 91 out of 126



Architectural Element

LAMP POST, WINTERS

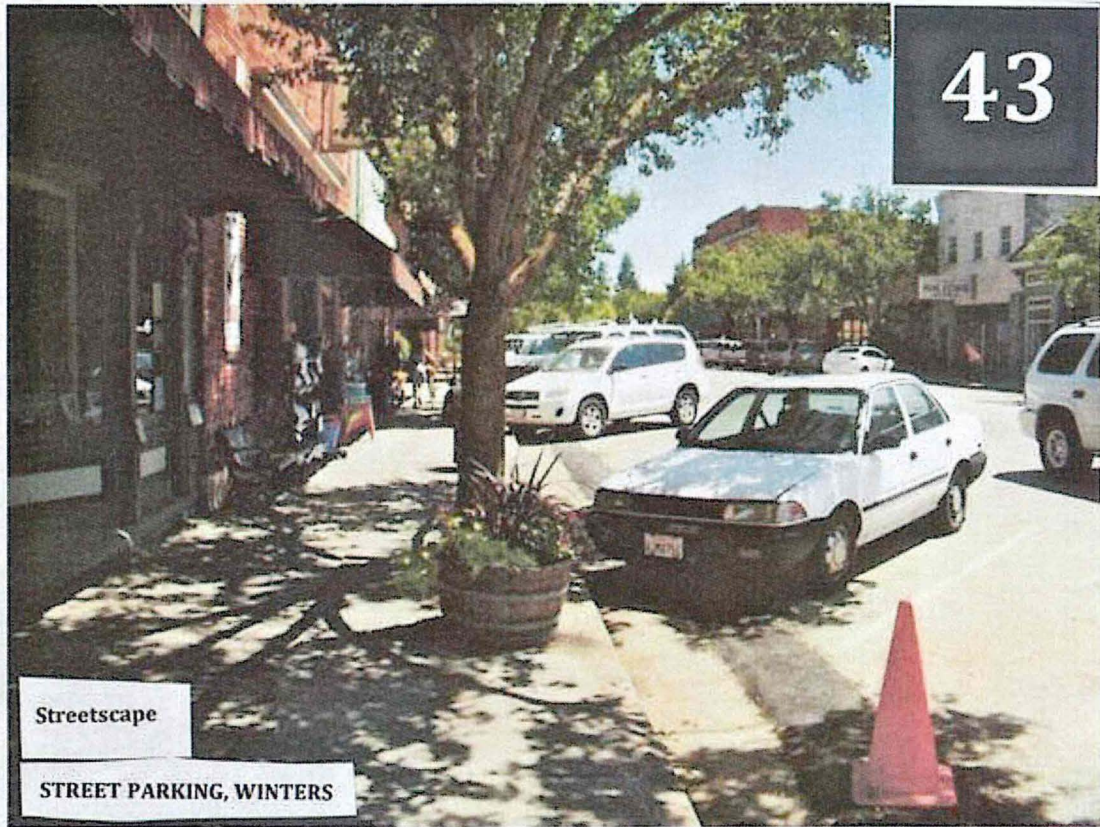
41. Yes = 37 out of 126



42. Yes = 110 out of 126



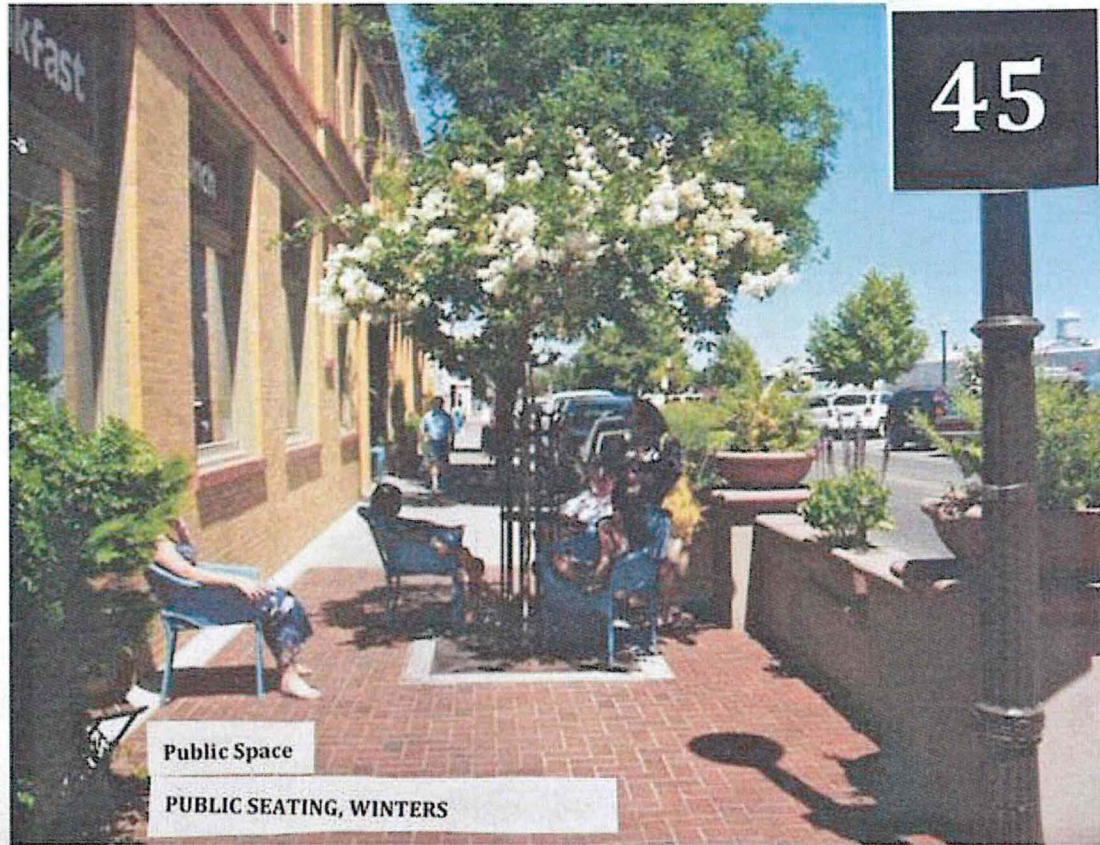
43. Yes = 106 out of 126



44. Yes = 91 out of 126



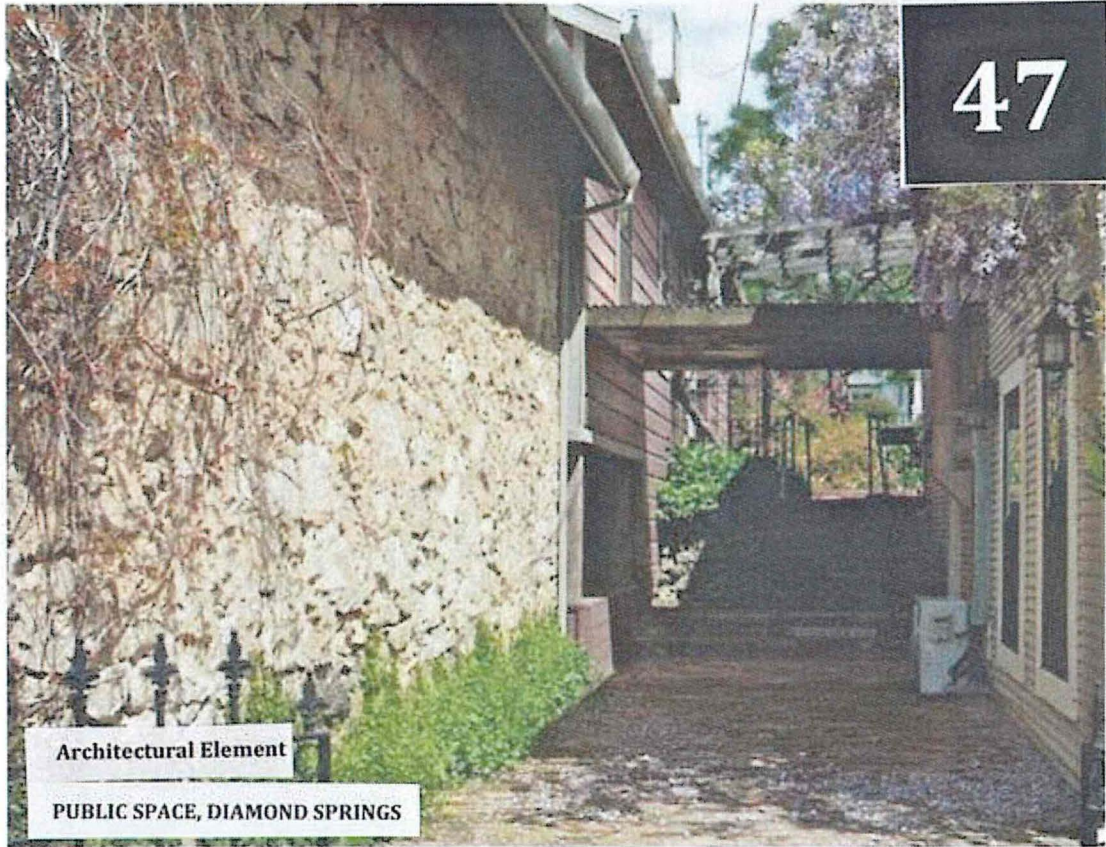
45. Yes = 90 out of 126



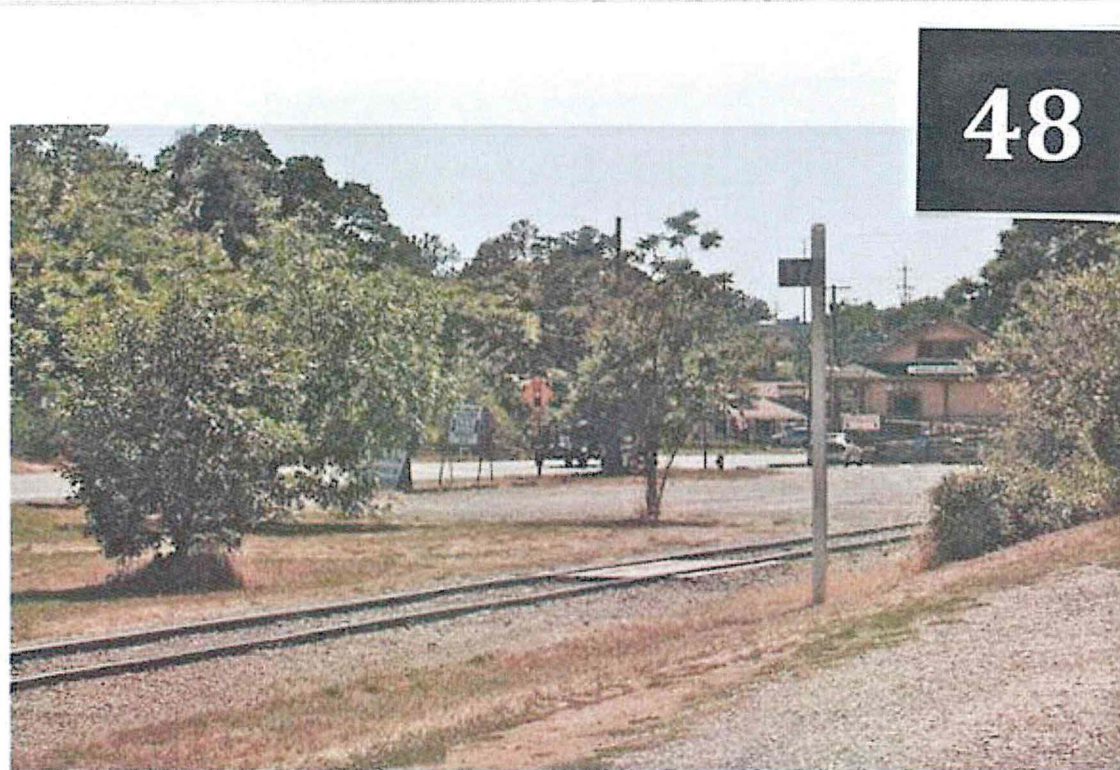
46. Yes = 100 out of 126



47. Yes = 99 out of 126

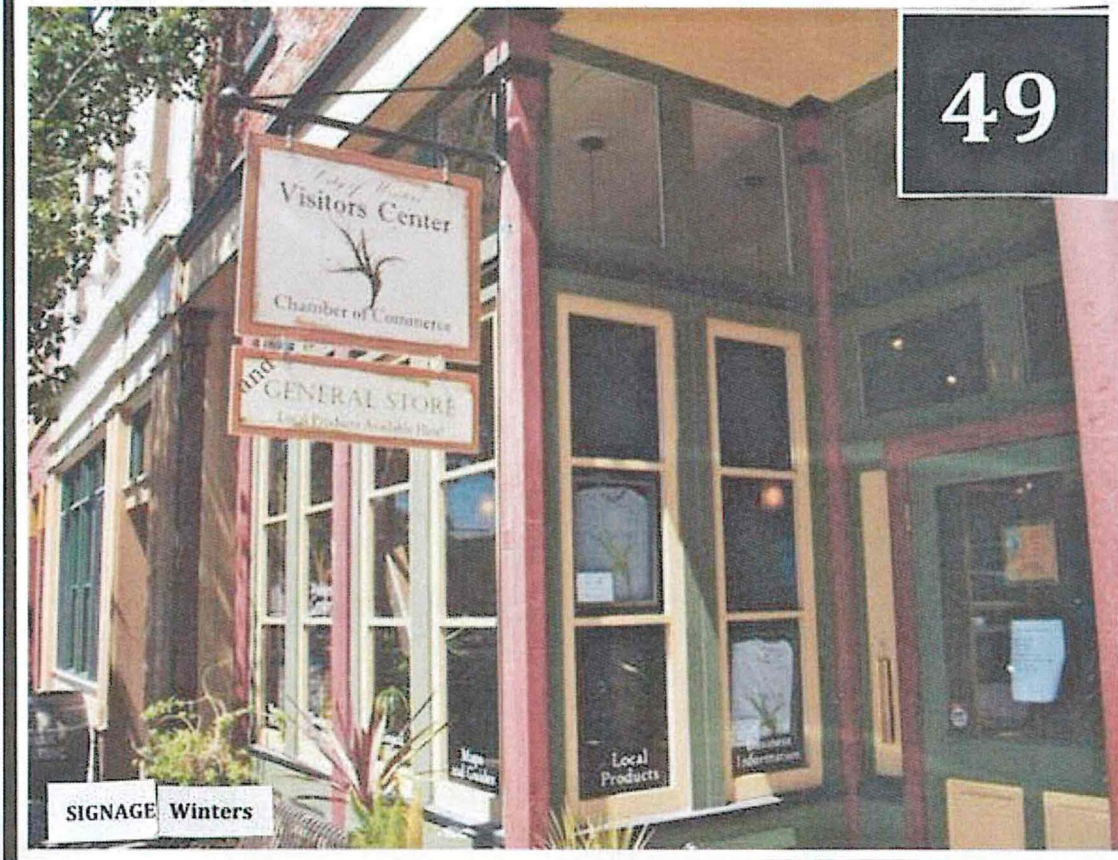


48. Yes = 98 out of 126



PUBLIC SPACE, SHINGLE SPRINGS

49. Yes = 102 out of 126



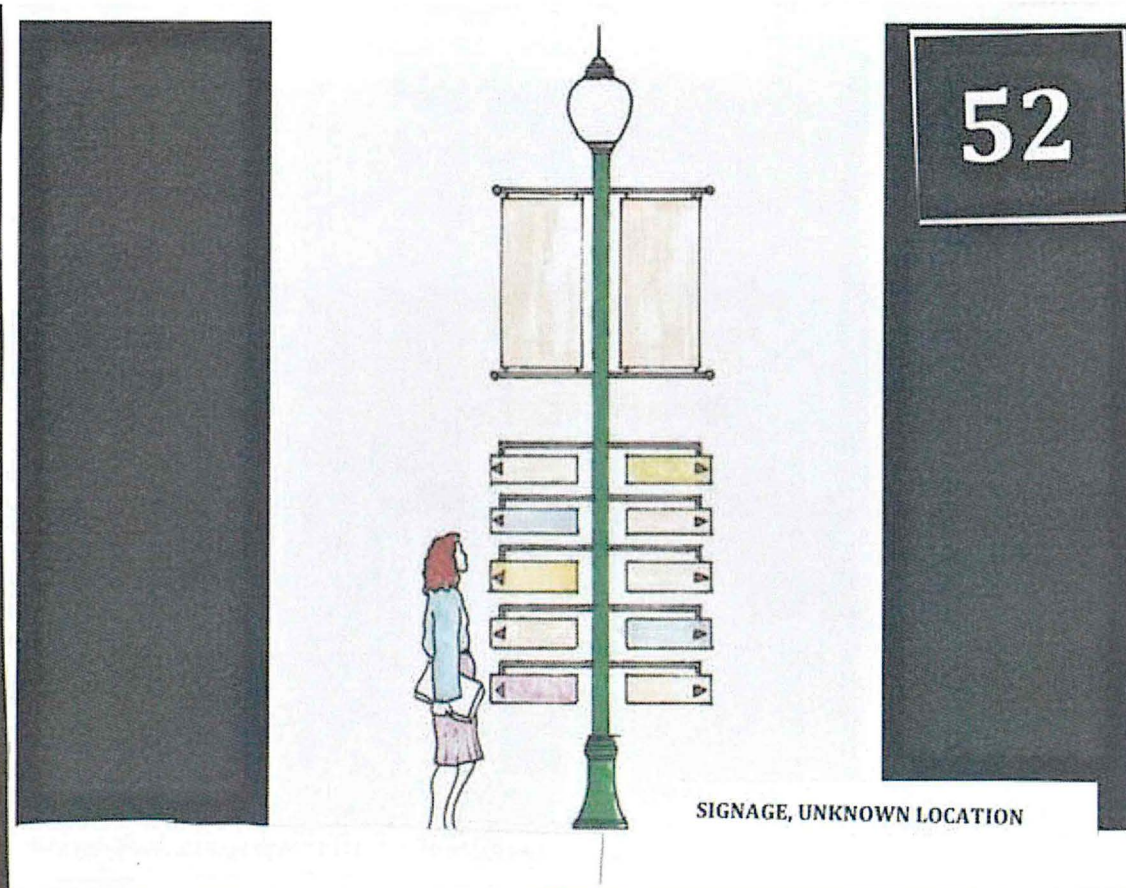
50. Yes = 3 out of 126



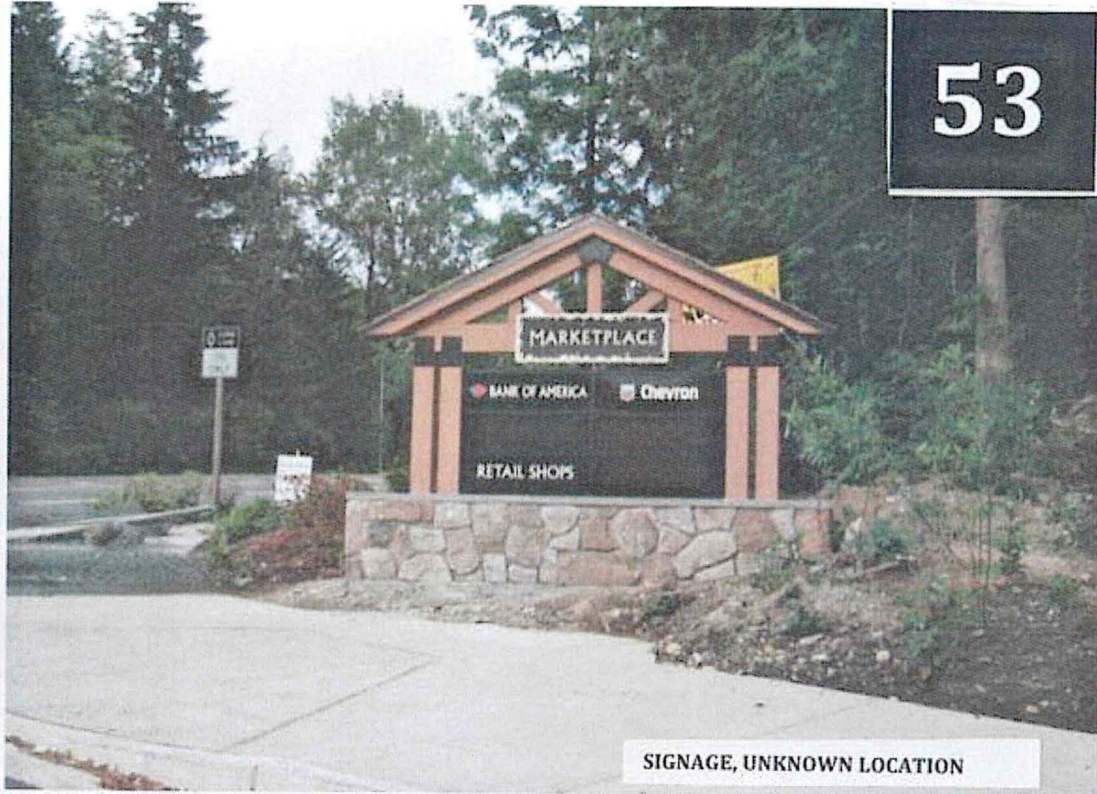
51. Yes = 77 out of 126



52. Yes = 44 out of 126

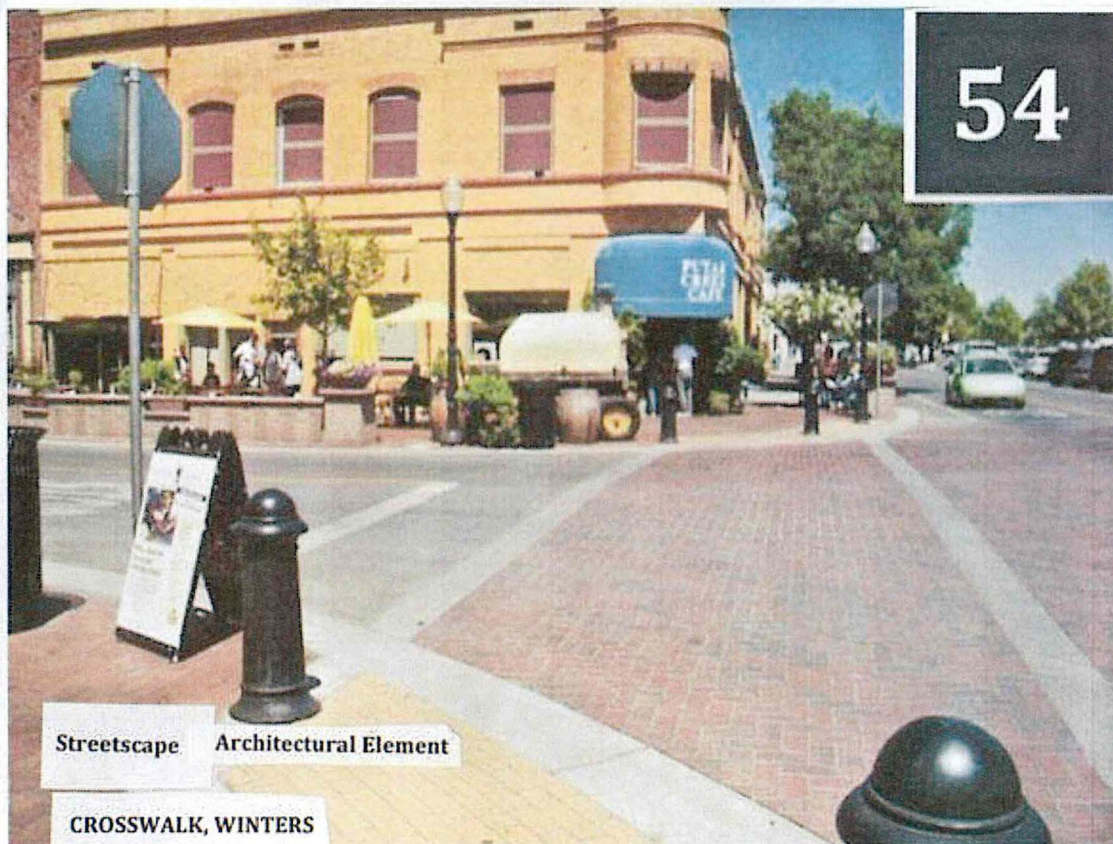


53. Yes = 94 out of 126

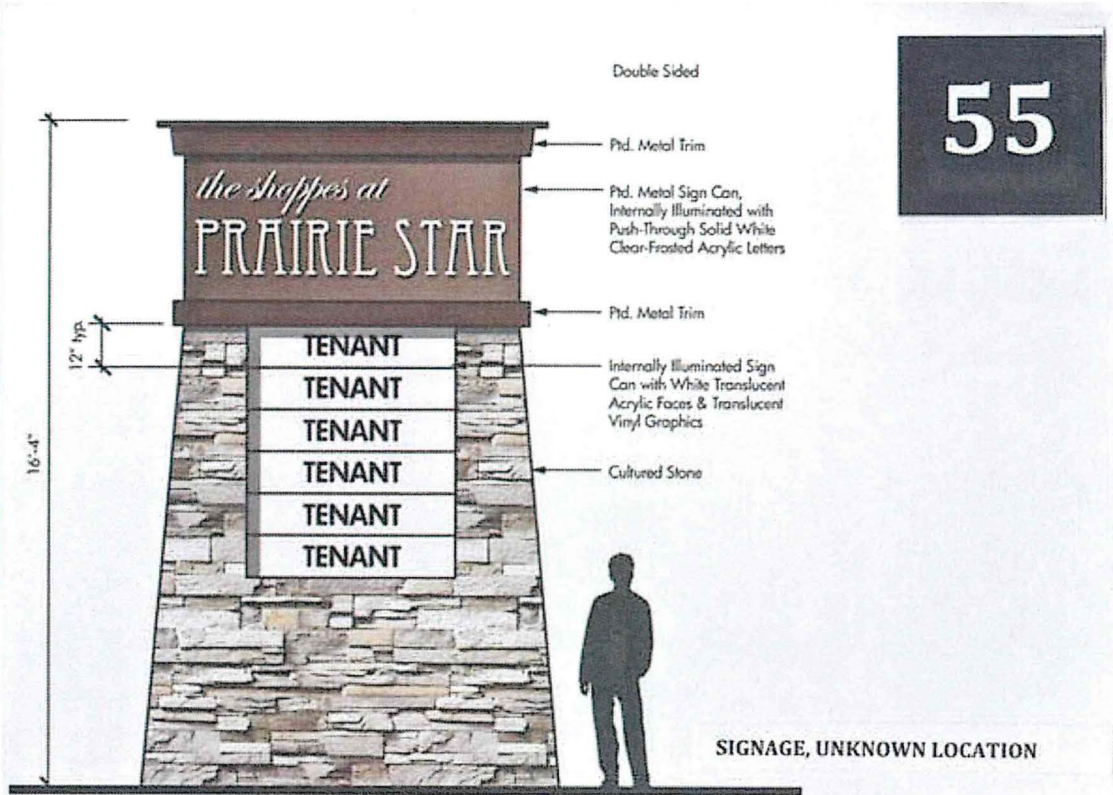


Monument sign advertising multiple businesses in a center – consider size, materials, character, and location

54. Yes = 71 out of 126



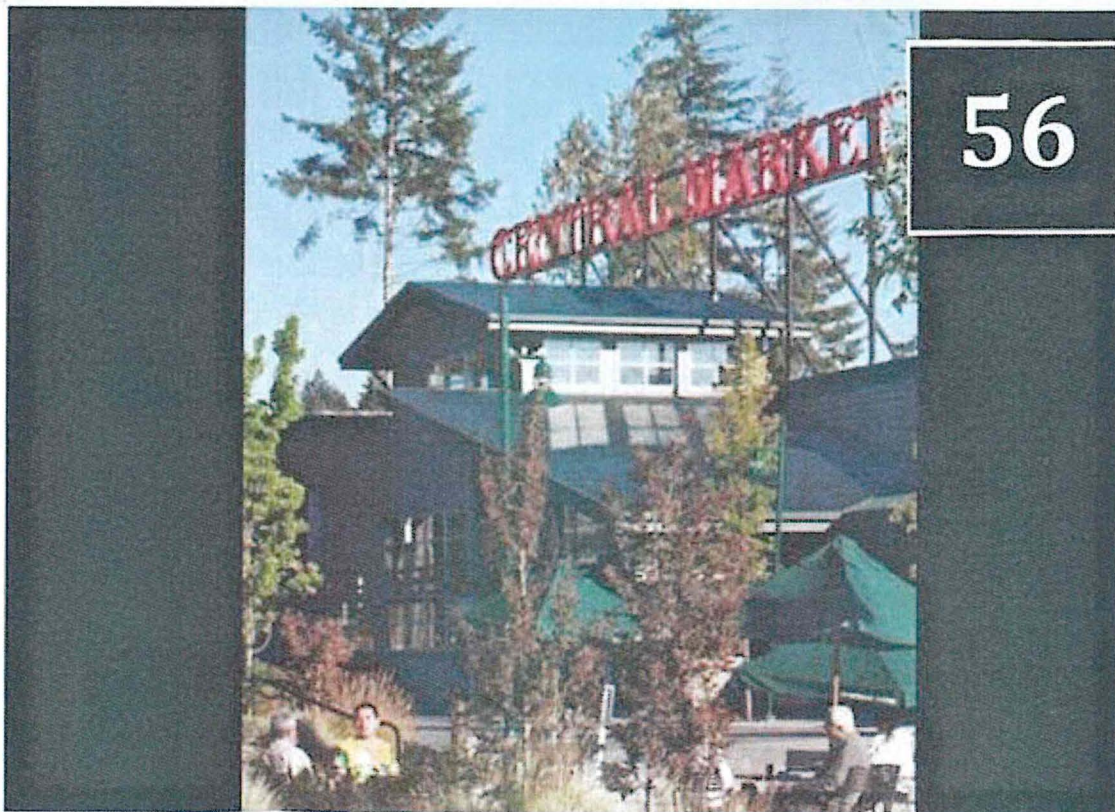
55. Yes = 46 out of 126



SIGNAGE, UNKNOWN LOCATION

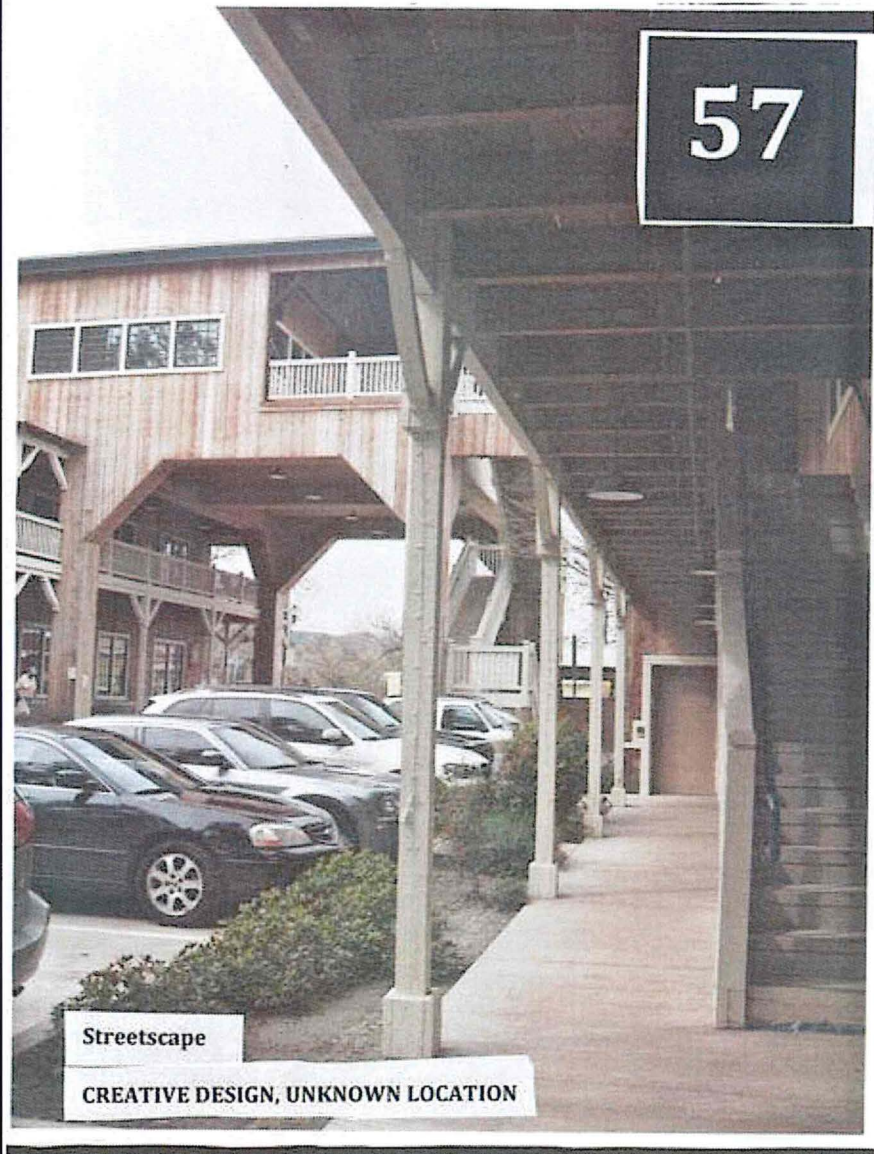
Monument sign - consider size, location, materials, surrounding landscaping, and lighting (backlighting)

56. Yes = 50 out of 126



SIGNAGE, UNKNOWN LOCATION

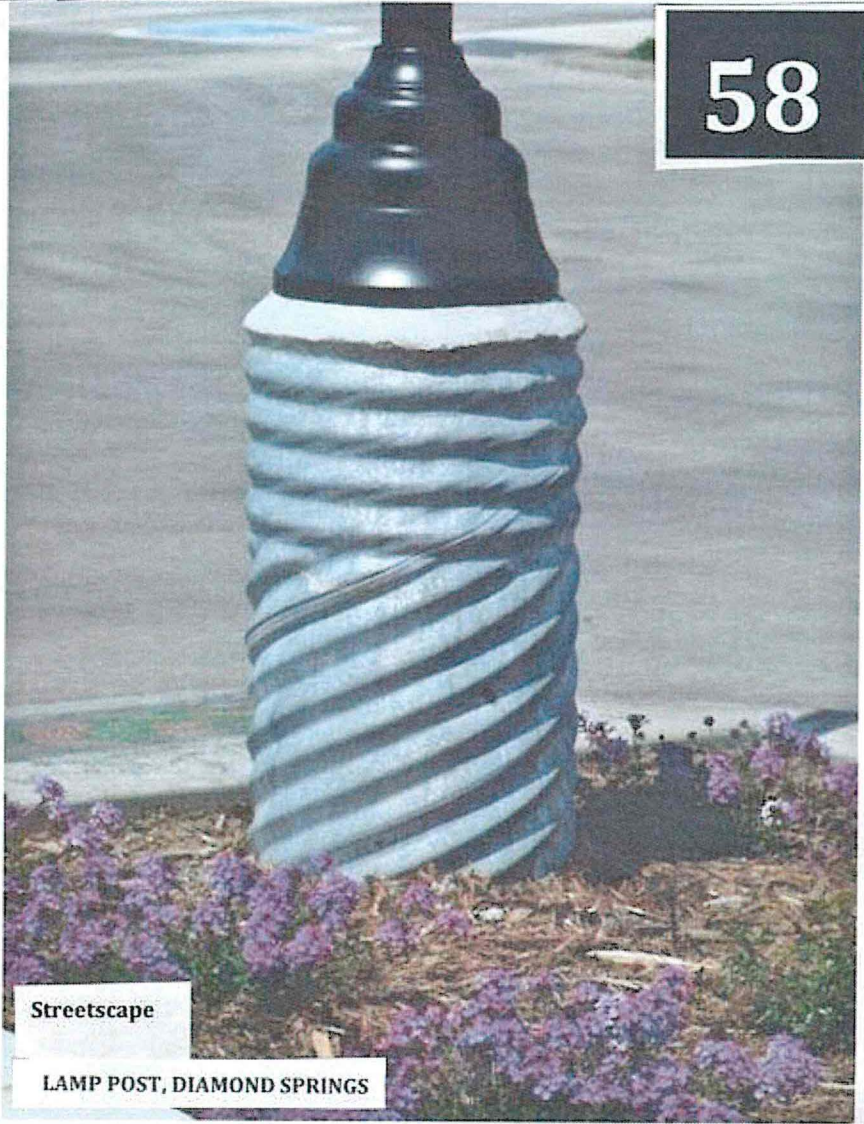
57. Yes = 72 out of 126



Streetscape

CREATIVE DESIGN, UNKNOWN LOCATION

58. Yes = 32 out of 126



58

Streetscape

LAMP POST, DIAMOND SPRINGS

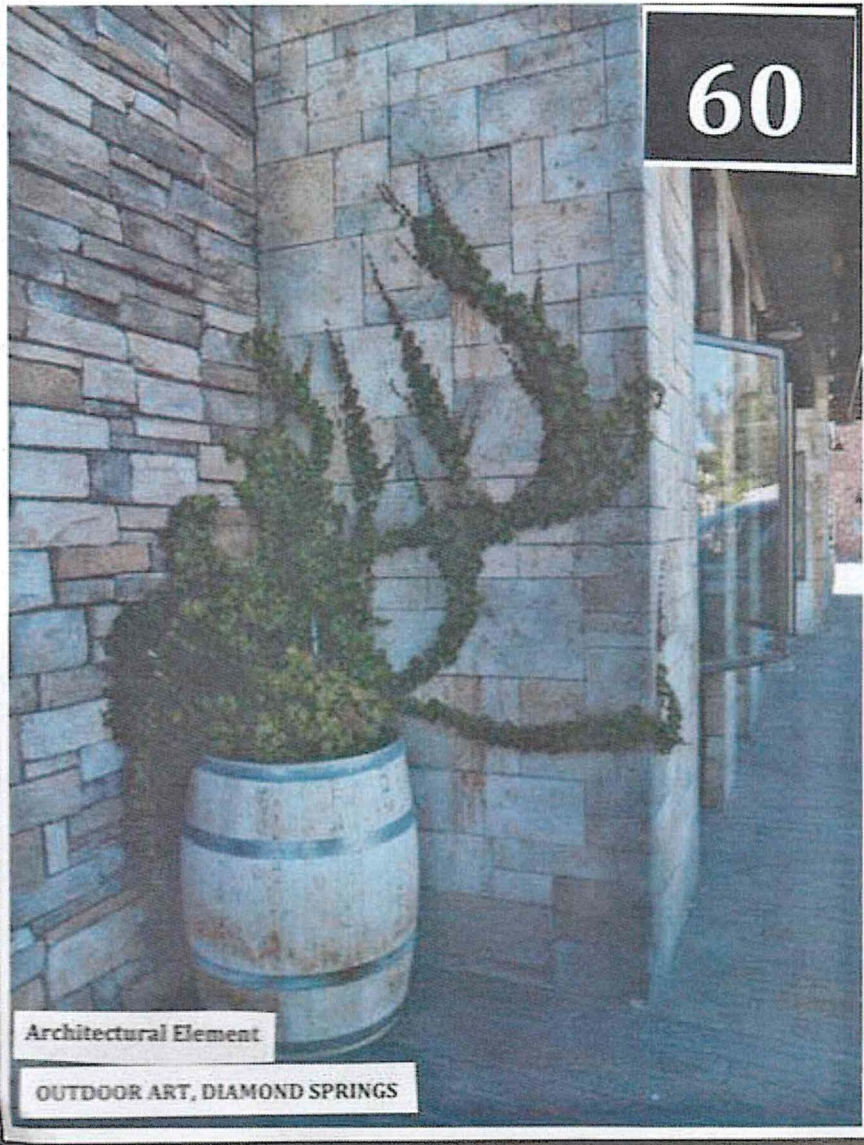
59. Yes = 91 out of 126



Architectural Element

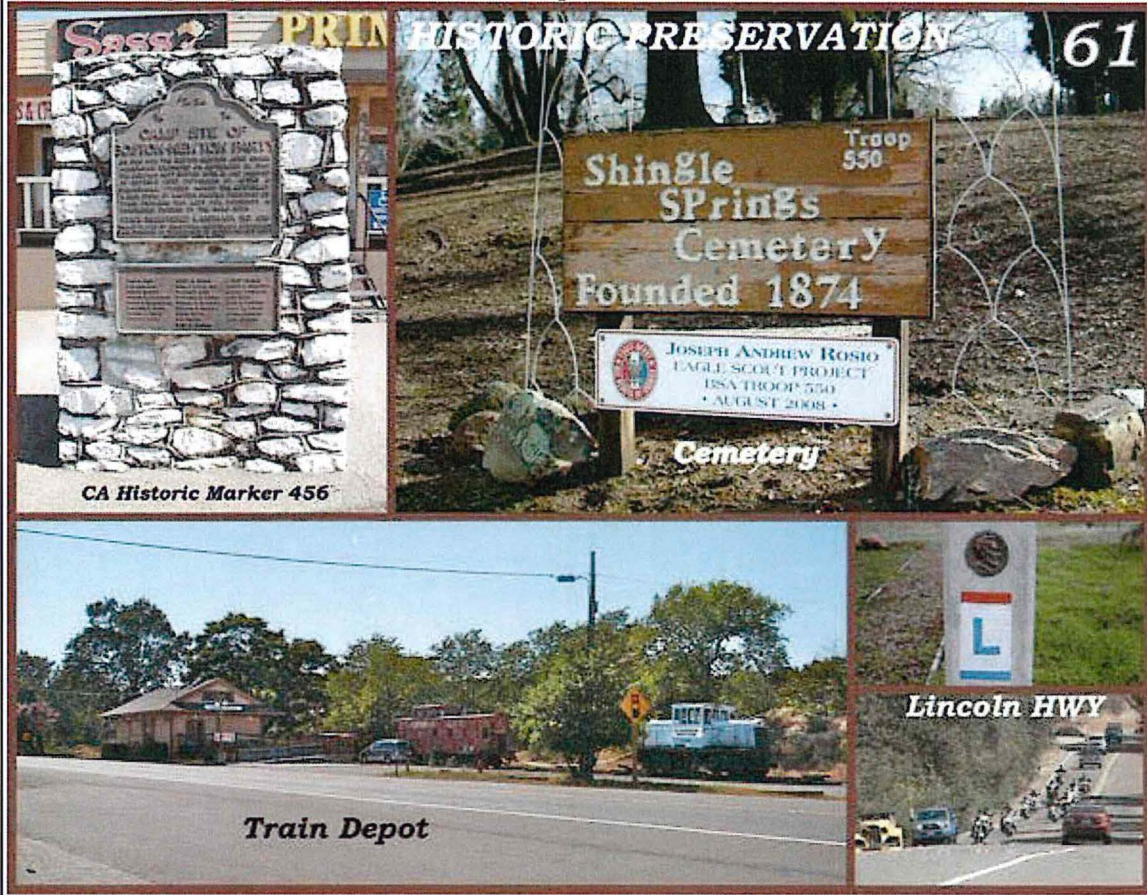
STAMPED CONCRETE, TEMECULA, CA

60. Yes = 105 out of 126



61. Yes = 102 out of 126

Should Shingle Springs' historical sites be preserved?



Back of paper comments:

Don't HELLA El Dorado! Do Government before they DO you!

The circled items were ones that I didn't have time to review. Sorry! Great presentation.

Let's not lose anymore of our character such as the Stone House already gone!

#58 Lamp base looks like pipe, not good - flowers yes

We don't want that "Mediterranean/Italian" look. We want the Gold Rush, or farming look, or pioneer look. Parking needs to have space for pickup trucks.

#58 like the lamp, but not the "pipe"-look concrete.

#33 Could be a good design-style for low-income housing here - lots of people thought the "barn-look" fits in well.

Tear down the billboard!

I would like to see smart growth vs no growth. We can't stop a town from developing but we can stop that development to include urban sprawl and loss of habitats and farmland. By designing land to max use on the smaller space we can keep our rural community and sustain healthy growth.

↑ Apartments with businesses intergrated into communities

↓ Park lots

↑ Parking garages and roofs w/ parking

↑ More public trans and bike lanes

Historic preservation, rather than placing limits on commercial development, can be taken to a higher, and probably more disinterested level than the board of supervisors.

We are big enough! We do not need any added commercial buildings!

Keep architectural elements on buildings so each is individual. El Dorado Town Center is very nice.

Front of paper comments:

Didn't have time to review all of the photos.

Partial survey - ran out of time!

#61 - Yes! When we have out-of-town visitors, we take them to the train and the Depot.

#40 - No lights

#61 - Absolutely

We'd like any decor that embraces Shingle Springs' historical past.