

# EL DORADO COUNTY DEPT. OF TRANSPORTATION

## EQUIPMENT / VEHICLE WASH FACILITY

2441 HEADINGTON RD, PLACERVILLE, CA 95667

PW12-30631 / CIP No. 81134

**STAFFORD  
KING  
WIESE  
ARCHITECTS**

ARCHITECTURE  
PLANNING  
INTERIORS



622 20TH STREET  
SACRAMENTO CALIFORNIA 95811  
(916) 930-5900 FAX: (916) 930-5800  
EMAIL: mail@skwaia.com

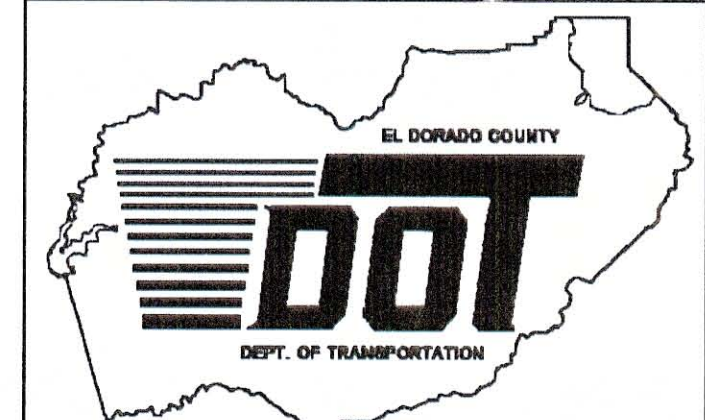
THE ARCHITECTS DO NOT REPRESENT THAT THESE PLANS OR THE SPECIFICATIONS IN CONNECTION THEREWITH ARE SUITABLE, WHETHER OR NOT MODIFIED, FOR ANY OTHER SITE THAN THE ONE FOR WHICH THEY WERE SPECIFICALLY PREPARED. THE ARCHITECTS DISCLAIM RESPONSIBILITY FOR THESE PLANS AND SPECIFICATIONS IF THEY ARE USED IN WHOLE OR IN PART AT ANY OTHER SITE.

CONSULTANT STAMP



CLIENT AND PROJECT

EQUIPMENT / VEHICLE  
WASH FACILITY  
EL DORADO COUNTY DEPT.  
OF TRANSPORTATION



REVISIONS

NO.	DESCRIPTION	DATE

KEY PLAN



SHEET TITLE

COVER SHEET

DRAWN BY SKW		CHECKED BY SKW	
PROJECT NO. 2957	UNIT	SHEET NO. A0.1	
COMPUTER NO.			
DATE 1/20/12			

### CONSULTANT / ARCHITECT CONTACTS

**ARCHITECT:** STAFFORD KING WIESE ARCHITECTS  
622 20TH STREET  
SACRAMENTO, CA 95811  
(916) 930-5900  
(916) 903-5800 fax  
CONTACT: GREG SECOR  
EMAIL: greg\_secor@skwaia.com

**CIVIL:** CARLTON ENGINEERING  
3883 PONDEROSA ROAD  
SHINGLE SPRINGS, CA 95682  
(530) 677-5515  
(530) 677-6645 fax  
CONTACT: JEFF THOMPSON  
EMAIL: jthompson@carlton-engineering.com

**STRUCTURAL:** BUEHLER & BUEHLER STRUCTURAL  
ENGINEERS  
600 Q STREET, SUITE 200  
SACRAMENTO, CA 95811  
(916) 443-0303  
CONTACT: LARRY JONES  
EMAIL: ljones@bbse.com

**MECHANICAL /  
ELECTRICAL /  
PLUMBING** GLUMAC, INC.  
910 GLENN DRIVE  
FOLSOM, CA 95630  
(916) 934-5103  
(916) 934-5112 fax  
CONTACT: HERB KNIERIEM  
EMAIL: hknieriem@glumac.com

### DEPARTMENT APPROVALS

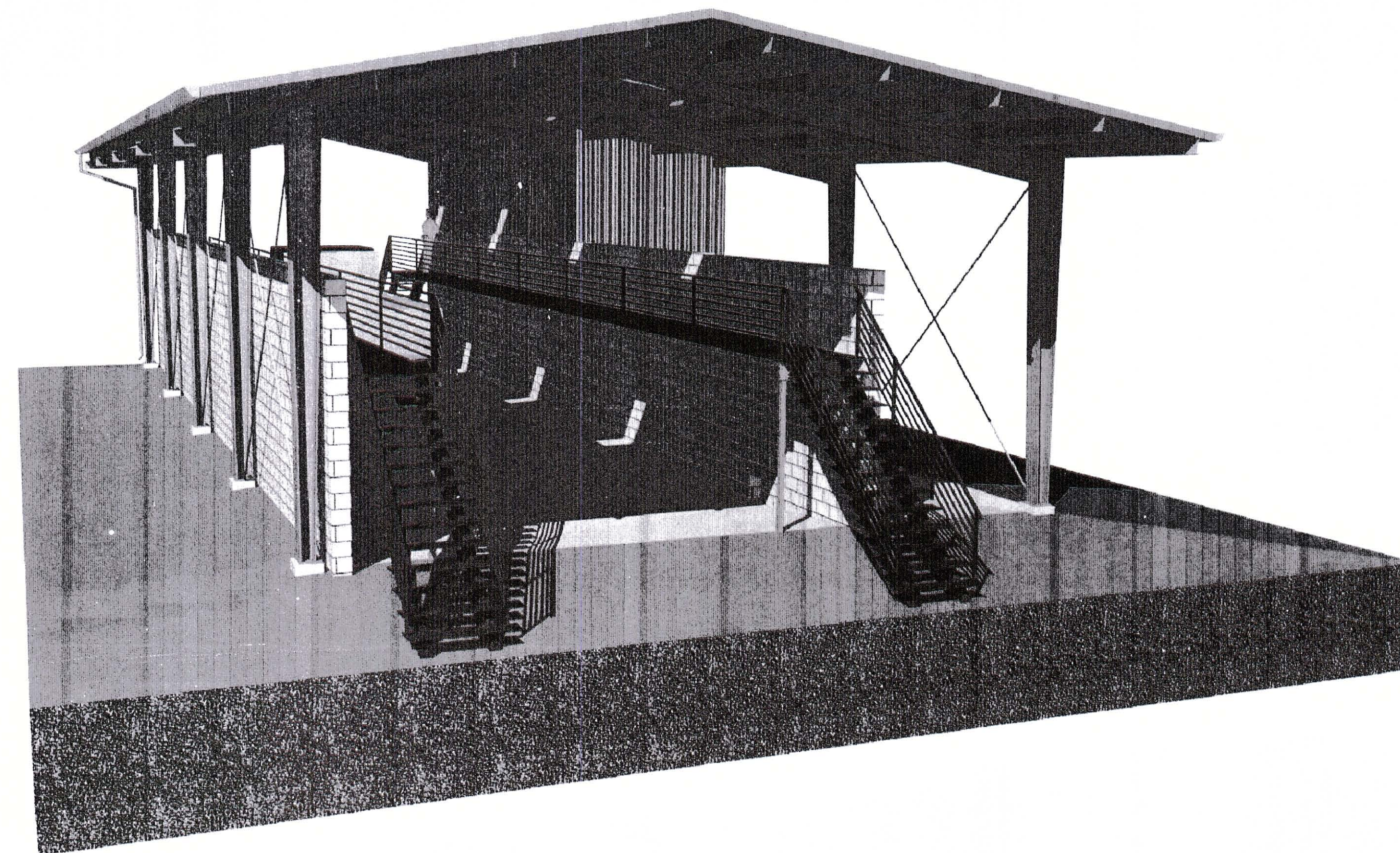
Adopted and Approved by:

John R. Knight  
Chair, El Dorado County Board of  
Supervisors

Approved by:

Kimberly A. Kerr  
Interim Director,  
El Dorado County Department of  
Transportation

Mathew D. Smeltzer, P.E. No C56932  
Deputy Director, Engineering Design  
El Dorado County Department of  
Transportation



### PROJECT DATA

**PROJECT DESCRIPTION:** THE PROJECT CONSISTS OF A VEHICLE WASH FACILITY, INCLUDING A TWO-STAGE, TWO-LEVEL WASH BAY WITH ADJACENT EQUIPMENT ROOM AND SUMP PIT.

**SITE ADDRESS:** 2441 HEADINGTON RD.  
PLACERVILLE, CA 95667

**BUILDING USE:** B & U OCCUPANCY

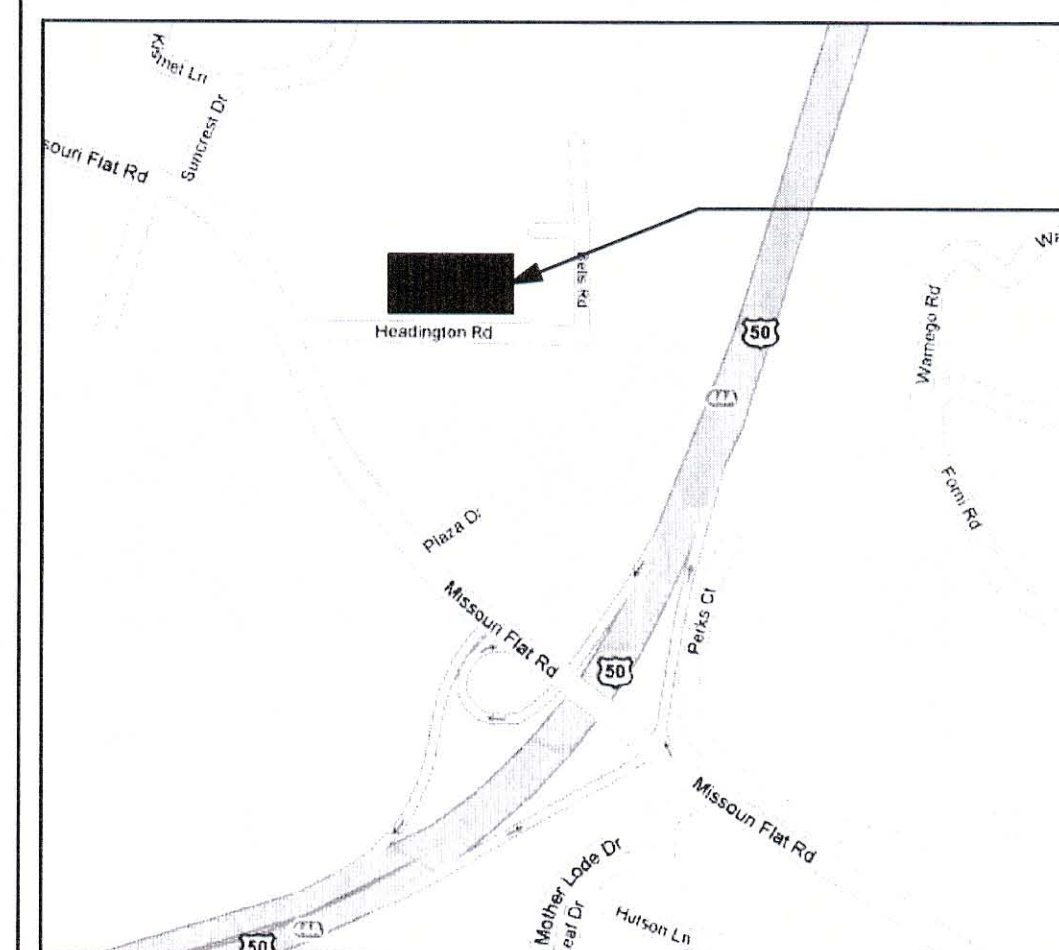
**CONST. TYPE:** TYPE II B

**TOTAL BUILDING STORIES:** 1

**AUTOMATIC FIRE SPRINKLERS:** NO

**BUILDING AREA:** 3,287 SF

### VICINITY MAP



PROJECT  
LOCATION