

INDEX OF SHEETS

Sheet Number	Sheet Title	Sheet Description
1	i	TITLE SHEET
2	ii	GENERAL NOTES, ABBREVIATIONS, AND LEGEND
3	iii	INDEX
4	P-1	LAKE TAHOE BLVD NEAR SAWMILL RD
5	P-2	LAKE TAHOE BLVD AT ANGORA CREEK VIEW CIRCLE AT ANGORA CREEK
6	P-3	PIONEER TRAIL AT COLD CREEK AND TROUT CREEK
7	P-4	TROUT CREEK AT MARTIN AVE PIONEER TR NEAR JICARILLA DR
8	EC-1	EROSION CONTROL
9	TC-1	TRAFFIC CONTROL
10	TC-2	TRAFFIC CONTROL

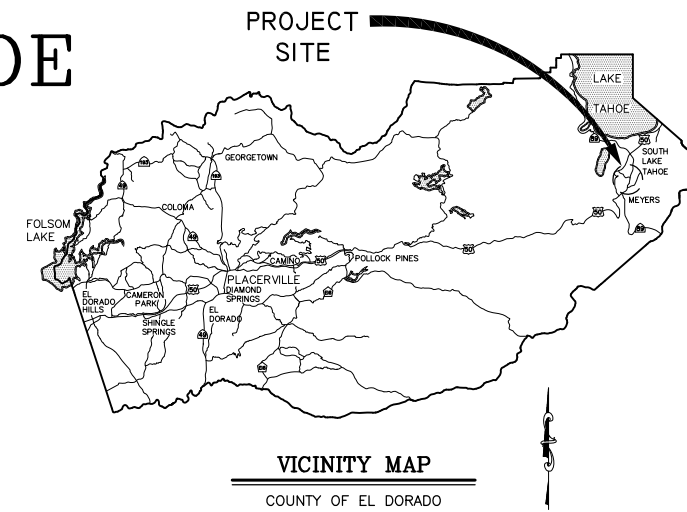
COUNTY OF EL DORADO, CA
DEPARTMENT OF TRANSPORTATION

PROJECT PLANS FOR THE CONSTRUCTION OF THE 2020

GUARDRAIL UPGRADES – TAHOE
PROJECT

IN THE COUNTY OF EL DORADO, DISTRICT 5,
MOUNTAIN VIEW ESTATES SUBDIVISIONS 5 & 6, AND UNASSIGNED
COUNTY ROAD RIGHTS OF WAY

To be supplemented with the 2018 Standard Plans and Specifications of
the California Department of Transportation, including the 2018 Revised
Standard Specifications of the California Department of Transportation,
unless otherwise noted.



GUARDRAIL UPGRADES –
TAHOE PROJECT AREAS



FUNDING SOURCES
HIGHWAY SAFETY IMPROVEMENT PROGRAM

CONTRACTOR'S LICENSE CLASSIFICATION: Bidders shall be properly licensed to perform the Work pursuant to the State Contractor's License Law (Business and Professions Code section 7000 et seq.) and shall possess a CLASS A LICENSE or equivalent combination of Classes required by the categories and type of Work included in the Contract Documents and Plans, at the time the Contract is awarded, and shall maintain a valid license through completion and acceptance of the Work including guarantee and warranty period. Failure of the successful Bidder to obtain proper and adequate licensing for an award of the Contract shall constitute a failure to execute the Contract, and shall result in forfeiture of the Bidders security.

REVISIONS		
MARK	DATE	BY



LOCATION MAP
SCALE: 1" = 2500'



SUBMITTED BY: DANIEL W. KIKKERT P.E.
SENIOR CIVIL ENGINEER
STATE OF CALIFORNIA NO. 70168

JUNE 25, 2020
DATE

BOARD OF SUPERVISORS
JOHN HIDAHL I
SHIVA FRENTZEN II
BRIAN K. VEERKAMP III
LORI PARLIN IV
SUE NOVASEL V

COUNTY OF EL DORADO
DEPARTMENT OF TRANSPORTATION
(530) 573-7900 (530) 621-5900
924 B EMERALD BAY RD 2850 FAIRLANE CT
SOUTH LAKE TAHOE, CA PLACERVILLE, CA
96150 96150

ADOPTED AND APPROVED BY:
BRIAN K. VEERKAMP
CHAIR, EL DORADO COUNTY BOARD OF SUPERVISORS
RAFAEL MARTINEZ, DIRECTOR
COMMUNITY DEVELOPMENT SERVICES, DEPARTMENT OF TRANSPORTATION
JOHN H. KAHLING, P.E., RCE NO. 52426, DEPUTY DIRECTOR OF ENGINEERING
COMMUNITY DEVELOPMENT SERVICES, DEPARTMENT OF TRANSPORTATION

CONTRACT NO. 4576, CIP NO. 72198
GUARDRAIL UPGRADES - TAHOE
PROJECT
TITLE SHEET
SHEET 1 OF 10

GENERAL NOTES

- ALL IMPROVEMENTS WILL BE ACCOMPLISHED UNDER THE APPROVAL, INSPECTION, AND TO THE SATISFACTION OF THE COUNTY OF EL DORADO TRANSPORTATION DIVISION (TD). IMPROVEMENT CONSTRUCTION MUST COMPLY WITH THESE PLANS AND THE 2018 CALTRANS STANDARD PLANS, UNLESS NOTED OTHERWISE. ALL REFERENCES TO THE "STANDARD SPECIFICATIONS" MEAN THE STATE OF CALIFORNIA, DEPARTMENT OF TRANSPORTATION (CALTRANS) 2018 STANDARD SPECIFICATIONS. CONSTRUCTION NOT SPECIFIED ON THESE PLANS OR IN SPECIFIC COUNTY OF EL DORADO (COUNTY) ORDINANCES MUST CONFORM TO THE REQUIREMENTS OF THE STANDARD SPECIFICATIONS. YOU ARE OBLIGATED TO BE FAMILIAR WITH APPLICABLE SECTIONS OF THE STANDARD SPECIFICATIONS NOT DISCUSSED IN THE GENERAL NOTES. THE CONTRACT SPECIAL PROVISIONS SUPERSEDE THE STANDARD SPECIFICATIONS WHERE DISCREPANCIES OCCUR.
- CONSTRUCTION HOURS WILL BE WEEKDAYS BETWEEN 8:00 A.M. AND 6:30 P.M. UNLESS PRIOR APPROVAL IS RECEIVED FROM THE COUNTY TD.
- THE LOCATIONS AND EXTENT OF UNDERGROUND UTILITIES IN THE WORK AREA AS SHOWN ARE APPROXIMATE AND ARE NOT NECESSARILY COMPLETE. A REASONABLE EFFORT HAS BEEN MADE TO LOCATE AND DELINEATE UTILITIES BASED UPON AVAILABLE RECORDS. YOU MUST DETERMINE THE TYPE, LOCATION, SIZE, AND/OR DEPTH OF THE UTILITIES WITHIN THE WORK AREA BEFORE STARTING WORK. YOU OR ANY SUBCONTRACTOR FOR THIS CONTRACT ARE RESPONSIBLE FOR DAMAGES DUE TO THE FAILURE TO EXACTLY LOCATE AND PRESERVE UNDERGROUND UTILITIES. YOU MUST CONTACT UNDERGROUND SERVICE ALERT AT (800) 642-2444 AT LEAST 48 HOURS BEFORE ANY CONSTRUCTION. SEE THE SPECIAL PROVISIONS FOR NOTIFICATION REQUIREMENTS. YOU ASSUME COMPLETE RESPONSIBILITY FOR DAMAGED UTILITIES.
- UNLESS SHOWN OTHERWISE, YOU ARE RESPONSIBLE FOR THE PROTECTION OF ALL EXISTING SURVEY MONUMENTS AND OTHER SURVEY MARKERS, INCLUDING CONSTRUCTION STAKES DURING CONSTRUCTION AND YOU ARE RESPONSIBLE FOR THE COST TO REPLACE ANY SUCH SURVEY MONUMENTS, MARKERS, OR STAKES.
- YOU WILL PROVIDE ALL LIGHTS, SIGNS, BARRICADES, FLAG PERSONS, PILOT CAR, OR OTHER DEVICES NECESSARY TO CONTROL TRAFFIC THROUGH THE JOB SITE AND FOR PUBLIC SAFETY UNDER THESE PLANS, THE STANDARD SPECIFICATIONS, AND CALIFORNIA MANUAL ON UNIFORM TRAFFIC CONTROL DEVICES (MUTCD).
- YOU AGREE TO ASSUME SOLE RESPONSIBILITY FOR JOB SITE CONDITIONS DURING THE COURSE OF THE WORK, INCLUDING SAFETY OF ALL PERSONS AND PROPERTY, AND FURTHER AGREE THAT THIS REQUIREMENT APPLIES CONTINUOUSLY AND IS NOT LIMITED TO NORMAL WORKING HOURS UNDER THE CONTRACT AND STANDARD SPECIFICATIONS.
- THERE WILL BE NO GRADING OR LAND DISTURBANCE BETWEEN OCTOBER 15 AND MAY 1 UNLESS APPROVALS ARE OBTAINED FROM THE TAHOE REGIONAL PLANNING AGENCY (TRPA), AS PROVIDED IN THE LIMITED EXEMPTION DESCRIBED IN CHAPTER 64, SUBSECTION 64.2.B. OF THE TRPA CODE OF ORDINANCES. APPROVALS FOR GRADING BETWEEN OCTOBER 15 AND MAY 1 MUST ALSO BE OBTAINED FROM THE REGIONAL WATER QUALITY CONTROL BOARD, LAHONTAN. IF REQUIRED, THE COUNTY WILL OBTAIN THESE APPROVALS.
- YOU WILL MAINTAIN A SET OF PLANS ON THE JOB SITE SHOWING "AS-CONSTRUCTED" CHANGES MADE TO DATE. UPON COMPLETION OF THE WORK, YOU WILL GIVE TO THE COUNTY A SET OF PLANS, MARKED UP TO THE SATISFACTION OF THE COUNTY, REFLECTING THE AS-CONSTRUCTED MODIFICATIONS.
- ALL CONTROL STATIONING AND DATA DIMENSIONING REFERENCE THE CENTERLINE OF THE FACILITY SHOWN, UNLESS NOTED OTHERWISE.
- YOU WILL NOT CLOSE OFF ANY UTILITY LINES OR OPEN VALVES OR TAKE ANY OTHER ACTION WHICH WOULD AFFECT THE OPERATION OF WATER OR SEWER SYSTEMS WITHOUT APPROVAL FROM THE SOUTH TAHOE PUBLIC UTILITY DISTRICT (STPUD). APPROVAL MUST BE REQUESTED AT LEAST 48 HOURS BEFORE INTERRUPTION OF THE UTILITY SERVICE IS REQUIRED. ANY INTERRUPTION TO ACTIVE WATER OR SEWER SERVICES, INCLUDING FIRE HYDRANTS, WHETHER INTENTIONAL OR NOT, MUST BE KEPT TO A MINIMUM TIME PERIOD. IF SERVICE TO BUILDINGS IS TO BE OFF FOR MORE THAN FOUR HOURS, YOU MUST ADVISE STPUD.
- YOU ARE REQUIRED TO IMPLEMENT DUST CONTROL MEASURES TO ENSURE THAT DUST RESULTING FROM YOUR ACTIVITIES IS CONTROLLED AND COMPLIES WITH THE PROVISIONS OF SECTION 7, "LEGAL RELATIONS AND RESPONSIBILITY TO THE PUBLIC," AND SECTION 14, "ENVIRONMENTAL STEWARDSHIP," OF THE STANDARD SPECIFICATIONS, COUNTY, AND LOCAL ORDINANCES. SEE THE SPECIAL PROVISIONS FOR DUST AND TRACKING CONTROL AND SWEEPING REQUIREMENTS.
- YOU ARE RESPONSIBLE FOR IMPLEMENTING ALL TEMPORARY EROSION CONTROL MEASURES. THE TEMPORARY EROSION CONTROL MEASURES MUST COMPLY WITH THE TRPA "HANDBOOK OF BEST MANAGEMENT PRACTICES" AND THE STORM WATER POLLUTION PREVENTION PLAN (SWPPP). THE TD WILL CONTACT TRPA BEFORE THE START OF THE WORK FOR A PRE-GRADING INSPECTION OF THE INSTALLED TEMPORARY EROSION CONTROL FACILITIES. YOU ARE RESPONSIBLE FOR THE MAINTENANCE AND PERFORMANCE OF THE TEMPORARY EROSION CONTROL MEASURES THROUGHOUT THE DURATION OF THE WORK. SEE THE SPECIAL PROVISIONS REGARDING TEMPORARY EROSION CONTROL FACILITY REMOVAL.
- CONSTRUCTION LIMITS SHOWN DELINEATE THE BOUNDARIES FOR YOUR ACTIVITIES BEYOND THE COUNTY STREET RIGHT-OF-WAY. CONSTRUCTION LIMIT FENCING MUST BE ERECTED ALONG THESE BOUNDARIES BEFORE WORK STARTS. VEGETATION WITHIN THESE LIMITS MUST BE PROTECTED TO THE EXTENT FEASIBLE. ALL TREES MUST BE PROTECTED UNLESS SHOWN TO BE REMOVED.
- UNLESS NOTED OTHERWISE, ALL REVEGETATION IS TO BE COMPLETED BY OTHERS.
- YOU WILL ONLY USE THE DESIGNATED SITES SHOWN FOR STORAGE OF EQUIPMENT AND MATERIALS. YOU ARE RESPONSIBLE FOR THE SECURITY OF EQUIPMENT AND MATERIALS.
- IT IS YOUR AND YOUR SUBCONTRACTOR(S) RESPONSIBILITY TO EXAMINE THE JOB SITE BEFORE THE OPENING OF BID PROPOSALS. YOU MUST BECOME FAMILIAR WITH THE NATURE AND LOCATION OF THE WORK AND THE GENERAL AND LOCAL CONDITIONS, PARTICULARLY THOSE AFFECTING THE AVAILABILITY OF TRANSPORTATION, THE DISPOSAL, HANDLING, AND STORAGE OF MATERIALS, AVAILABILITY OF LABOR, WATER, ELECTRICITY, ROADS, THE UNCERTAINTIES OF WEATHER, THE CONDITIONS OF THE GROUND, SURFACE AND SUBSURFACE MATERIALS, THE EQUIPMENT AND FACILITIES NEEDED FOR AND DURING THE PERFORMANCE OF THE WORK. FAILURE BY YOU OR YOUR SUBCONTRACTOR(S) TO ACQUAINT YOURSELVES WITH THE INFORMATION AVAILABLE WILL NOT RELIEVE YOU OR YOUR SUBCONTRACTOR(S) FROM RESPONSIBILITY FOR PROPERLY ESTIMATING THE DIFFICULTY AND COST OF SUCCESSFULLY PERFORMING THE WORK.
- ELEVATIONS FOR PIPE INVERTS, FLOWLINES, TOPS OF GRATES, RIMS, ETC., ARE BASED ON THE TOPOGRAPHIC INFORMATION SHOWN. YOU WILL VERIFY ALL NECESSARY SURFACE ELEVATIONS IN THE FIELD AND NOTIFY THE TD OF ANY DISCREPANCIES WHICH MIGHT AFFECT THE OPERATION OF THE NEW FACILITIES BEFORE BREAKING GROUND FOR THE INSTALLATION. THE TD MUST BE CONTACTED IF ELEVATIONS ARE INCORRECT SO PROPER ADJUSTMENTS CAN BE MADE BEFORE THE INSTALLATION OF THE FACILITIES.
- EXCEPT FOR THOSE OBTAINED BY THE TD, YOU MUST OBTAIN, AT YOUR EXPENSE, ALL PERMITS, LICENSES, INSURANCE POLICIES, ETC., NECESSARY TO COMPLY WITH STATE AND LOCAL LAWS ASSOCIATED WITH THE PERFORMANCE OF THE WORK.
- YOU ARE RESPONSIBLE TO REVIEW THE CONTRACT DOCUMENTS FOR SUBMITTALS REQUIRED FOR COUNTY REVIEW AND ACCEPTANCE.
- THE COUNTY WILL PROVIDE CONSTRUCTION STAKING IN COMPLIANCE WITH SECTION 5-1.26 OF THE STANDARD SPECIFICATIONS.
- THE PLANS SHOW SLOPE LENGTHS FOR PIPE ROUNDED TO THE NEAREST FOOT. ALL PIPE LENGTHS AND INVERT ELEVATIONS SHOWN ON THE PLANS ARE TO THE CENTERLINE OF THE STRUCTURES TO WHICH THE PIPES ARE ATTACHED. SEE THE STANDARD SPECIFICATIONS FOR THE MAXIMUM ALLOWABLE DEFLECTION ANGLE AT EACH PIPE JOINT.
- YOU ARE RESPONSIBLE TO MAINTAIN THE GRADING LIMITS AS SHOWN ON THE PLANS, DETAILS, CROSS SECTIONS, AND AS DIRECTED BY THE ENGINEER. SEE SHEET iii OF THE PLANS FOR THE RAW EARTHWORK QUANTITIES ASSOCIATED WITH GRADING.

ABBREVIATIONS

NOTE: LOWER CASE TEXT WITHIN PLAN SET INDICATES EXISTING

△	DELTA = DEFLECTION ANGLE	MGS	MIDWEST GUARDRAIL SYSTEM
A	ARCH OR ASPEN	MISC	MISCELLANEOUS
AB	AGGREGATE BASE	MOC	MID POINT ON CURVE
ABAND	ABANDONED	MOD	MODIFIED
ABC	ARTICULATED BLOCK CHANNEL	N	NORTH
AC	ASPHALT CONCRETE	NEG	NEGLIGIBLE
AP	ANGLE POINT	NGVD	NATIONAL GEODETIC VERTICAL DATUM
APN	ASSESSOR'S PARCEL NUMBER	NIC	NOT IN CONTRACT
BC	BEGIN CURVE	NTS	NOT TO SCALE
BCR	BEGIN CURB RETURN	OAE	OR APPROVED EQUAL
BGN	BEGIN	OC	ON CENTER
BLC	BLANKET-LINED CHANNEL	OD	OUTSIDE DIAMETER
BVCE	BEGIN VERTICAL CURVE ELEVATION	OG	ORIGINAL GROUND
BVCS	BEGIN VERTICAL CURVE STATION	OH	OVERHEAD
C	CEDAR	OVEREX	OVEREXCAVATION
CALCS	CALCULATIONS	P	PINE
CATV	CABLE TELEVISION	PC	POINT OF BEGINNING OF CURVE
CC	CENTER TO CENTER	PCC	PORTLAND CEMENT CONCRETE OR POINT OF COMPOUND CURVE
CF	CUBIC FEET OR CURB FACE	PERF	PERFORATED
CHD	CHORD DIRECTION	PCVCE	POINT OF COMPOUND VERTICAL CURVE ELEVATION
CIR	CIRCLE	PCVCS	POINT OF COMPOUND VERTICAL CURVE STATION
CL	CENTERLINE	PL	PROPERTY LINE
CL	CLASS OR CENTERLINE	POR	PORTION
CLR	CLEAR	PP	POWER/UTILITY POLE
CO	CURB OPENING OR CLEANOUT	PRC	POINT OF REVERSE CURVE
CO	COUNTY	PROP	PROPOSED
CONC	CONCRETE	PRVCE	POINT OF REVERSE VERTICAL CURVE ELEVATION
CONST	CONSTRUCT	PRVCS	POINT OF REVERSE VERTICAL CURVE STATION
CMP	CORRUGATED METAL PIPE	PT	POINT OR POINT OF TANGENCY
CSLT	CITY OF SOUTH LAKE TAHOE	PUE	PUBLIC UTILITY EASEMENT
CSP	CORRUGATED STEEL PIPE	PVC	POLYVINYL CHLORIDE
CT	CALTRANS OR COURT	PVIE	POINT OF VERTICAL INTERSECTION ELEVATION
CTC	CALIFORNIA TAHOE CONSERVANCY	PVIS	POINT OF VERTICAL INTERSECTION STATION
CY	CUBIC YARD	PVMT	PAVEMENT
C&G	CURB AND GUTTER	R	RADIUS
D	DEPTH	R&R	REMOVE & REPLACE
DBL	DOUBLE	RC	RELATIVE COMPACTION
DET	DETAIL	RCP	REINFORCED CONCRETE PIPE
DI	DRAINAGE INLET OR DUCTILE IRON	RD	ROAD
DIA OR Ø	DIAMETER	REF	REFERENCE
DISS	DISSIPATOR	REQ'D	REQUIRED
DR	DRIVE	RLC	ROCK-LINED CHANNEL
D/W	DRIVEWAY	ROW	RIGHT-OF-WAY
E	EAST	RSF	REINFORCED SILT FENCE
EA	EACH	RSP	ROCK SLOPE PROTECTION
EC	END OF CURVE	RT	RIGHT
ECR	END OF CURB RETURN	RW	RETAINING WALL
ELEC	ELECTRIC	S	SOUTH OR SANITARY SEWER
ELEV	ELEVATION	SCO	SEWER CLEAN OUT
ENGR	ENGINEER	SD	STORM DRAIN
EP	EDGE OF PAVEMENT	SDMH	STORM DRAIN MANHOLE
ESA	ENVIRONMENTALLY SENSITIVE AREA	SEZ	STREAM ENVIRONMENT ZONE
ESMT	EASEMENT	SF	SQUARE FEET
EVCE	END VERTICAL CURVE ELEVATION	SHT	SHEET
EVCS	END VERTICAL CURVE STATION	SL	SLOPE LENGTH
EX OR EXIST	EXISTING	SMH	SEWER MANHOLE
F	FIR	ST	SEDIMENT TRAP OR STREET
FES	FLARED END SECTION	STA	STATION
FG	FINISHED GRADE	STD	STANDARD
FH	FIRE HYDRANT	STL	STEEL
FL	FLOWLINE	STPUD	SOUTH TAHOE PUBLIC UTILITY DISTRICT
FS	FINISH SURFACE	SWPPP	STORM WATER POLLUTION PREVENTION PLAN
G	GAS	T	TELEPHONE
GA	GAUGE	TBC	TOP BACK OF CURB
GB	GRADE BREAK	TBD	TOP BACK OF DIKE
GLS	GRASS-LINED SWALE	TBR	TO BE REMOVED
GW	GROUND WATER	TD	TOP OF DIKE
H	HORIZONTAL	TG	TOP OF GRATE
HDPE	HIGH DENSITY POLYETHYLENE	TTL	TOTAL
HP	HIGH POINT	TRANS	TRANSITION
HWL	HIGH WATER LINE	TRM	TURF REINFORCEMENT MAT
ID	INSIDE DIAMETER	TRPA	TAHOE REGIONAL PLANNING AGENCY
IE	INVERT ELEVATION	TYP	TYPICAL
INCR	INCREASE	UG	UNDERGROUND
INST	INSTALL	UKN	UNKNOWN
INTRXN	INTERSECTION	USFS	UNITED STATES FOREST SERVICE
L	LENGTH	V	VERTICAL
LC	LENGTH OF CHORD	W	WEST OR WATER
LF	LINEAR FEET	W/O	WITHOUT
LP	LOW POINT	WC	WILLOW CLUSTER
LT	LEFT	WV	WATER VALVE
MAT'L	MATERIAL		

LEGEND

EXISTING		PROPOSED	
(SCREENED AND/OR DASHED)	EXISTING (AS NOTED)	---	CENTERLINE
---	RIGHT-OF-WAY OR PROPERTY LINE	-----	SAWCUT (AS NOTED)
---	EASEMENT	XXXX.XX	ELEVATION
---	LAND CAPABILITY BOUNDARY	XXXX.X XXXX.XX	ELEVATION, EG CL, PROPOSED (PROFILE ONLY)
---	10' SEZ SETBACK	○ □	CSP INLET/RISER OR STORM DRAIN MANHOLE, DRAINAGE INLET
○ or □	ROCK	VV	CUT OR FILL SLOPE
●	FOUND MONUMENT	(X)	DETAIL REF NUMBER SHEET NUMBER
XXXX.X	ELEVATION	■	ROCK
⊙	SEWER MANHOLE	=====	SD PIPE (MATERIAL AS NOTED)
○	SEWER CLEAN OUT	-RSF-ESA-	REINFORCED SILT FENCE AND TYPE ESA FENCE
■	DRAINAGE INLET	▷	FLARED END SECTION
gm	GAS METER	#:#	SLOPE RATIO, H: V
WV	WATER VALVE	=====	ROCK-LINED CHANNEL
WM	WATER METER	=====	BLANKET-LINED CHANNEL
⊙	MONITORING WELL	⊗	TREE REMOVAL
---w---w---	WATER LINE	FLOWLINE
---s---s---	SEWER LINE	---c---c---	CUT
---g---g---	GAS LINE	---f---f---	FILL
┌───┐	STORM DRAIN		
---oh---oh---	OVERHEAD UTILITIES		
⊙	POWER/UTILITY POLE		
⊙	UTILITY POLE & GUY ANCHOR		
⊙	FIRE HYDRANT		
---	FENCE		
---	FLOWLINE		
⊙ 28"	TREE, DIAMETER AND TYPE		
○	STUMP		
⊙ inc	WILLOW CLUSTER		

UTILITIES

CABLE TELEVISION	CHARTER COMMUNICATIONS, (775) 588-1077
ELECTRIC	LIBERTY UTILITIES, (530) 541-6400
SEWER	SOUTH TAHOE PUD, (530) 544-6474
TELEPHONE	AT&T, (530) 888-2031
STORM DRAIN	CO. OF EL DORADO TRANSPORTATION DIVISION, (530) 573-3180
WATER	FALLEN LEAF MUTUAL WATER CO, (530)-544-0608

Drawing name: \\CD\Users\TD-ST-Engineering\CDL_30_PROJECTS\72198 - General\Upgrades\Engineering\PLAN2_GENERAL.dwg

FOR REDUCED PLANS ORIGINAL SCALE IS IN INCHES

REVISION	NUMBER	DATE	DESCRIPTION	BY



PREPARED UNDER THE SUPERVISION OF:

 REGISTERED CIVIL ENGINEER
JUNE 25, 2020
 DATE:

DESIGNED: DMG	DRAWN: DMG
CHECKED: DWK	DATE: 6/2020
ROAD NUMBER: ---	



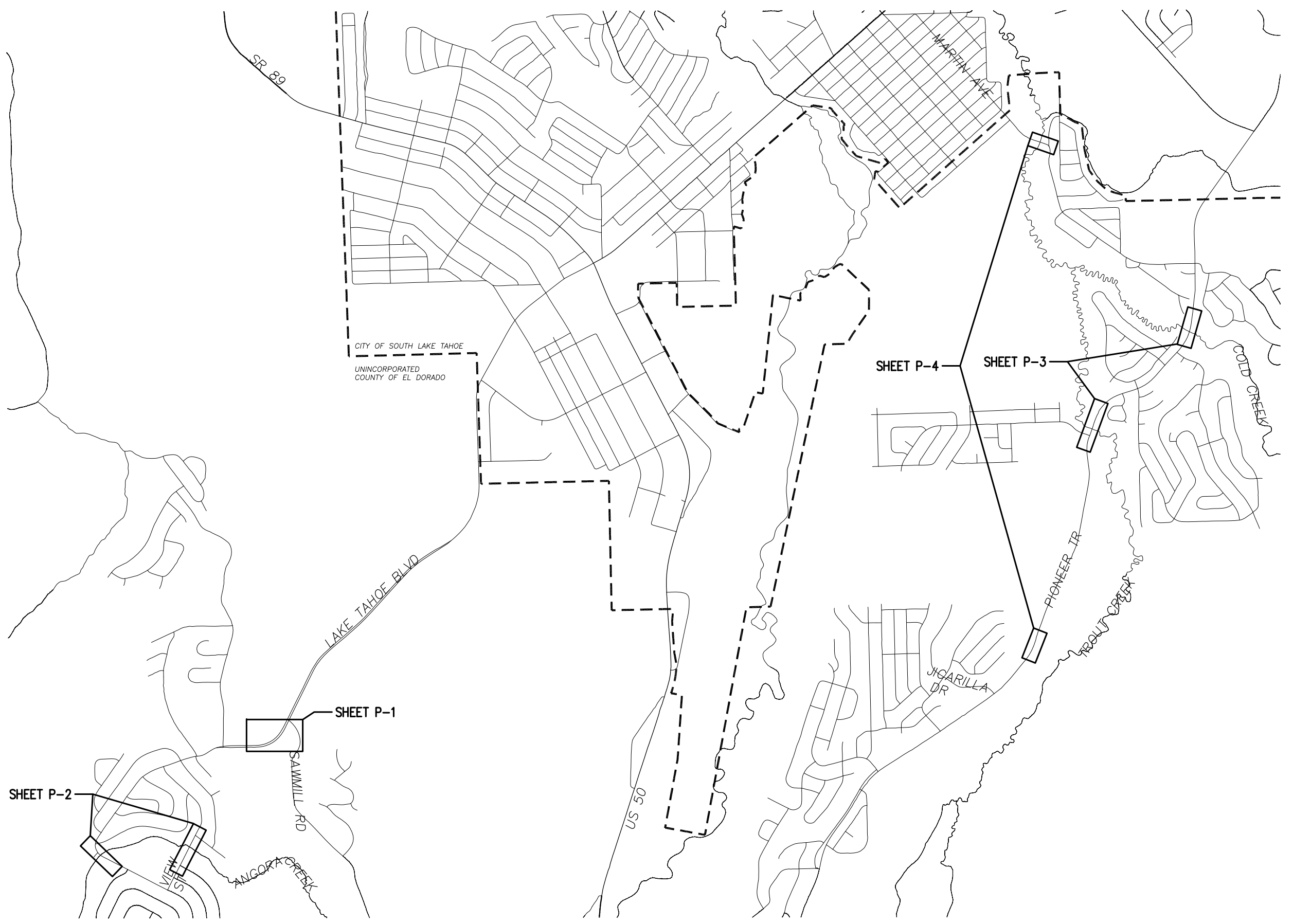
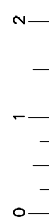
**COUNTY OF EL DORADO
DEPARTMENT OF TRANSPORTATION**

**GUARDRAIL UPGRADES - TAHOE PROJECT
GENERAL NOTES, ABBREVIATIONS, AND LEGEND**

SHEET	ii
OF	10
CONTRACT NO.	4576
CIP No.	72198

Drawing name: \\CD\Users\TD-SIT-Engineering\Civil_3D_PROJECTS\72198 - Guardrail Upgrades\Engineering\PLANS\3 SUBSHEET 3 INDEX.dwg

FOR REDUCED PLANS
ORIGINAL SCALE IS IN INCHES



SCALE: 1" = 1000'

REVISION	NUMBER	DATE	DESCRIPTION	BY



PREPARED UNDER THE SUPERVISION OF:

 REGISTERED CIVIL ENGINEER
 DATE: **JUNE 25, 2020**

DESIGNED: DMG	DRAWN: DMG
CHECKED: DWK	DATE: 6/2020
ROAD NUMBER: ---	



COUNTY OF EL DORADO
DEPARTMENT OF TRANSPORTATION

GUARDRAIL UPGRADES – TAHOE PROJECT
INDEX

SHEET **iii**
 3 OF 10
 CONTRACT NO. **4576**
 CIP No. **72198**

Drawing name: \\C:\Data\GIS\Projects\72198 - Guardrail Upgrade\Engineering\PLAN\GUARDRAIL_UPDATE.dwg

FOR REDUCED PLANS
REVISION

2 ORIGINAL SCALE IS IN INCHES
1
0

NUMBER	DATE	DESCRIPTION	BY



PREPARED UNDER THE SUPERVISION OF:

 REGISTERED CIVIL ENGINEER
JUNE 25, 2020
 DATE:

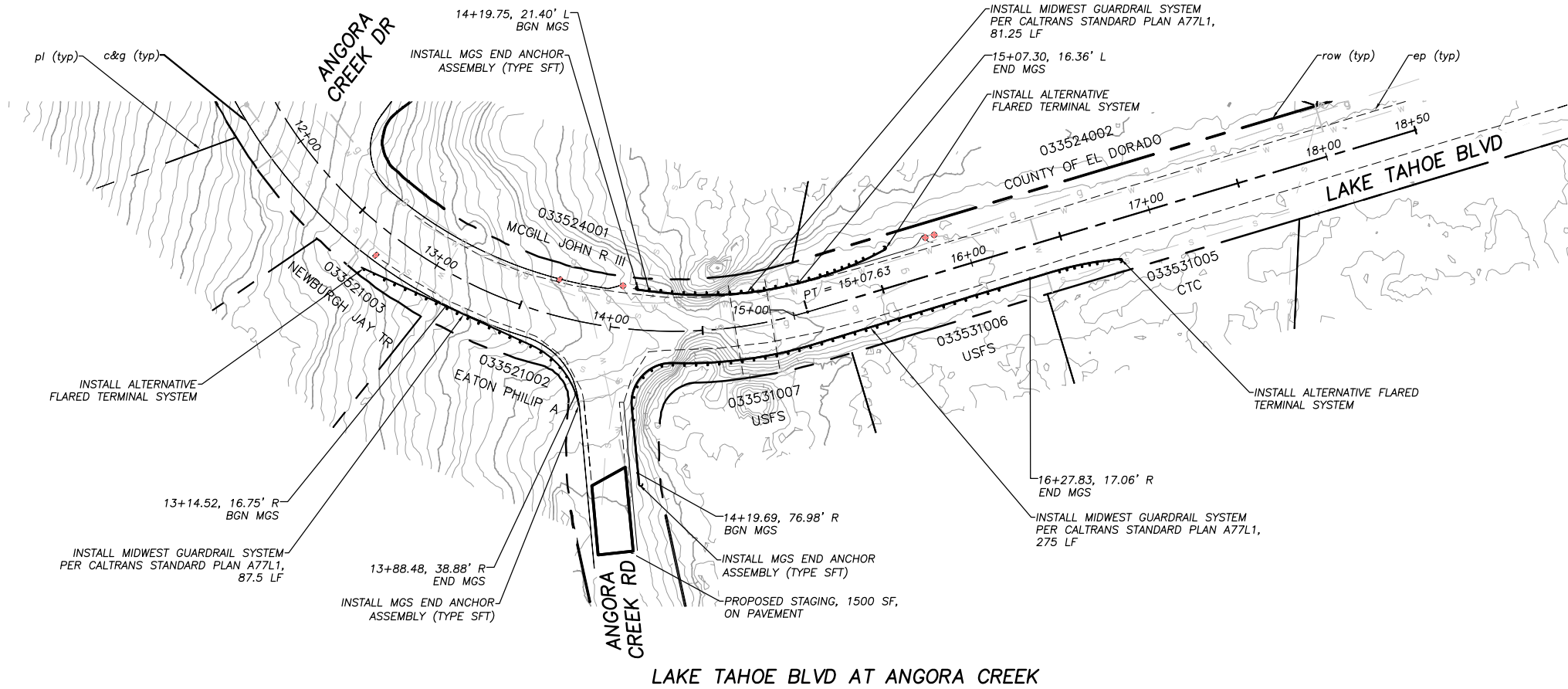
DESIGNED: DMG
 DRAWN: DMG
 CHECKED: DWK
 DATE: 6/2020
 ROAD NUMBER: ---



COUNTY OF EL DORADO
 DEPARTMENT OF TRANSPORTATION

GUARDRAIL UPGRADES - TAHOE PROJECT
 LAKE TAHOE BLVD AT ANGORA CREEK
 VIEW CIRCLE AT ANGORA CREEK

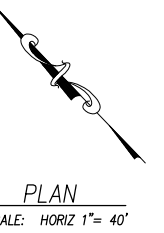
SHEET
P-2
 5 OF 10
 CONTRACT NO.
4576
 CIP No.
72198



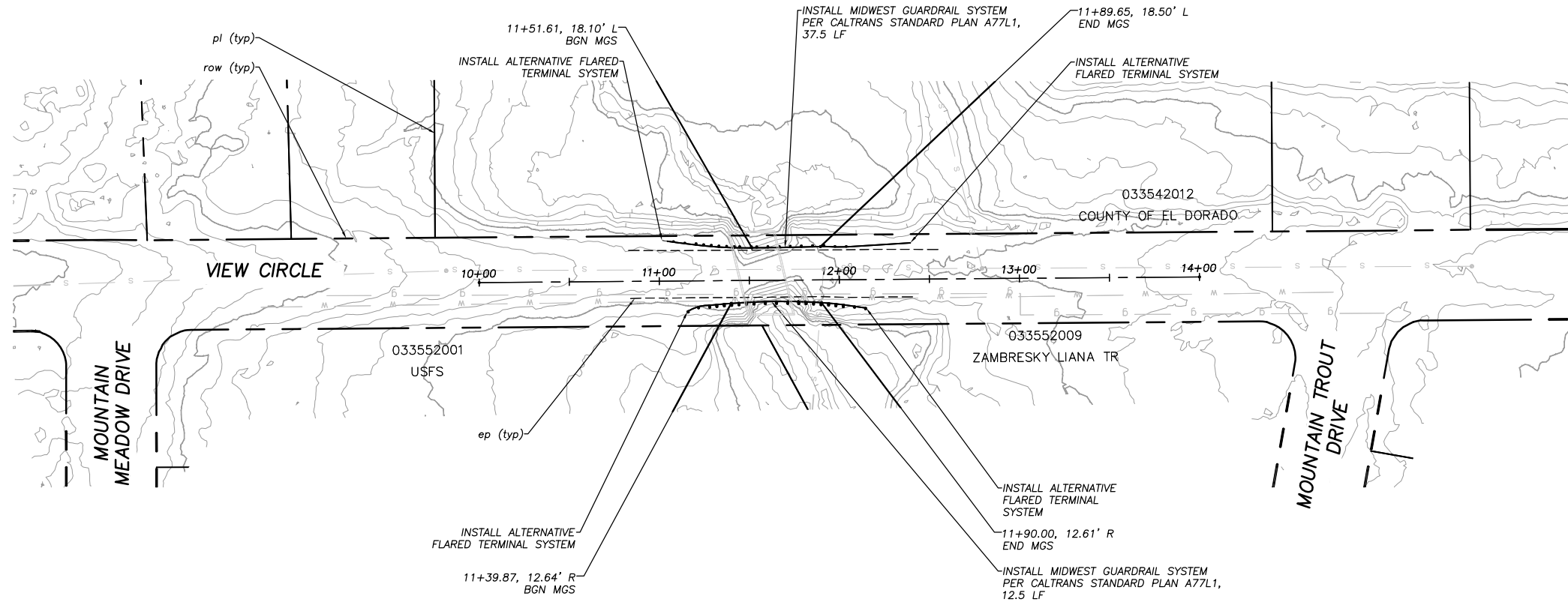
LAKE TAHOE BLVD AT ANGORA CREEK

!! WARNING !!
 THE LOCATION AND/OR ELEVATION OF EXISTING UNDERGROUND UTILITIES SHOWN ON THESE PLANS ARE ONLY APPROXIMATE. CONTRACTOR TO VERIFY LOCATION AND ELEVATION OF ALL EXISTING UNDERGROUND UTILITIES.

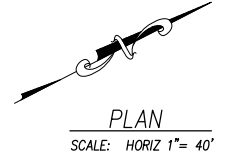
NOTE:
 THIS PROJECT IS LOCATED IN AN ENVIRONMENTALLY SENSITIVE AREA. YOU MUST EXERCISE UTMOST CARE TO PROTECT AND MAINTAIN EXISTING VEGETATION AND MINIMIZE SOIL COMPACTION WITHIN CONSTRUCTION AREAS.



PLAN
 SCALE: HORIZ 1" = 40'



VIEW CIRCLE AT ANGORA CREEK



PLAN
 SCALE: HORIZ 1" = 40'

!! WARNING !!

THE LOCATION AND/OR ELEVATION OF EXISTING UNDERGROUND UTILITIES SHOWN ON THESE PLANS ARE ONLY APPROXIMATE. CONTRACTOR TO VERIFY LOCATION AND ELEVATION OF ALL EXISTING UNDERGROUND UTILITIES.

NOTE:
THIS PROJECT IS LOCATED IN AN ENVIRONMENTALLY SENSITIVE AREA. YOU MUST EXERCISE UTMOST CARE TO PROTECT AND MAINTAIN EXISTING VEGETATION AND MINIMIZE SOIL COMPACTION WITHIN CONSTRUCTION AREAS.

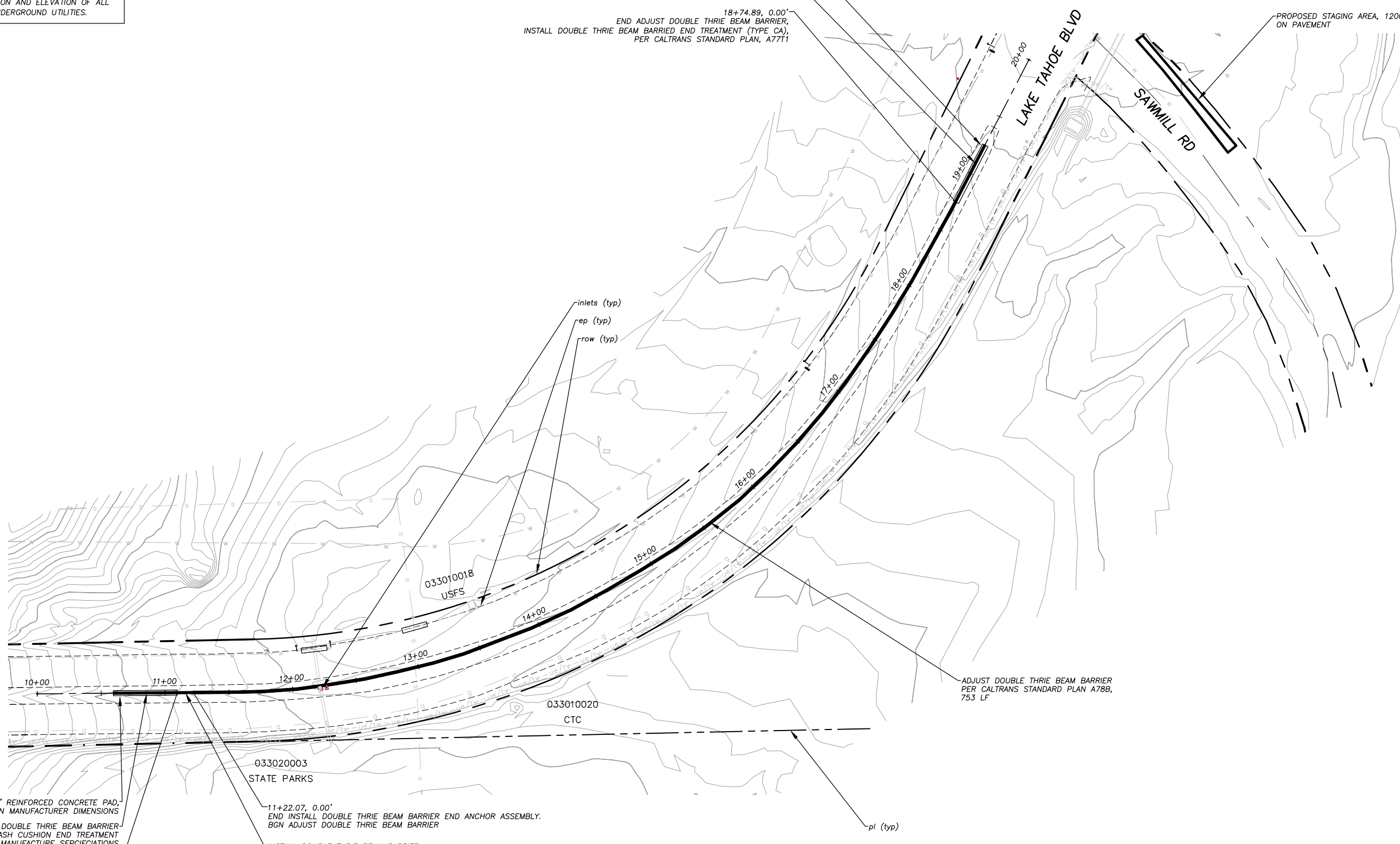
CONSTRUCT 6" REINFORCED CONCRETE PAD, PER MANUFACTURER CRASH CUSHION SPECIFICATION

INSTALL DOUBLE THRIE BEAM BARRIER CRASH CUSHION END TREATMENT PER PER MANUFACTURER SPECIFICATIONS

18+74.89, 0.00'
END ADJUST DOUBLE THRIE BEAM BARRIER, INSTALL DOUBLE THRIE BEAM BARRIED END TREATMENT (TYPE CA), PER CALTRANS STANDARD PLAN, A77T1

PROPOSED STAGING AREA, 1200 SF, ON PAVEMENT

Drawing name: \\C:\data\td-s\it-engineering\civil_3d_projects\72198 - Guardrail Upgrade\Engineering\PLAN\GUARDRAIL_UPDATE.dwg



CONSTRUCT 6" REINFORCED CONCRETE PAD, PER CRASH CUSHION MANUFACTURER DIMENSIONS

INSTALL DOUBLE THRIE BEAM BARRIER CRASH CUSHION END TREATMENT PER MANUFACTURE SEPCIFICATIONS

11+09.57, 0.00'
END INSTALL DOUBLE THRIE BEAM BARRIER CRASH CUSHION END TREATMENT, BGN INSTALL DOUBLE THRIE BEAM BARRIER END ANCHOR ASSEMBLY

11+22.07, 0.00'
END INSTALL DOUBLE THRIE BEAM BARRIER END ANCHOR ASSEMBLY, BGN ADJUST DOUBLE THRIE BEAM BARRIER

INSTALL DOUBLE THRIE BEAM BARRIER END ANCHOR ASSEMBLY (TYPE CA) PER CALTRANS STANDARD PLAN A77T1

ADJUST DOUBLE THRIE BEAM BARRIER PER CALTRANS STANDARD PLAN A78B, 753 LF

LAKE TAHOE BLVD NEAR SAWMILL RD

PLAN & PROFILE

SCALE: HORIZ 1"= 40'
VERT 1"= 10'

REVISION	NUMBER	DATE	DESCRIPTION	BY



PREPARED UNDER THE SUPERVISION OF:

Walter A. Walker

REGISTERED CIVIL ENGINEER
JUNE 25, 2020

DESIGNED: DMG
DRAWN: DMG

CHECKED: DWK
DATE: 6/2020

ROAD NUMBER: ---



**COUNTY OF EL DORADO
DEPARTMENT OF TRANSPORTATION**

**GUARDRAIL UPGRADES - TAHOE PROJECT
LAKE TAHOE BLVD NEAR SAWMILL RD**

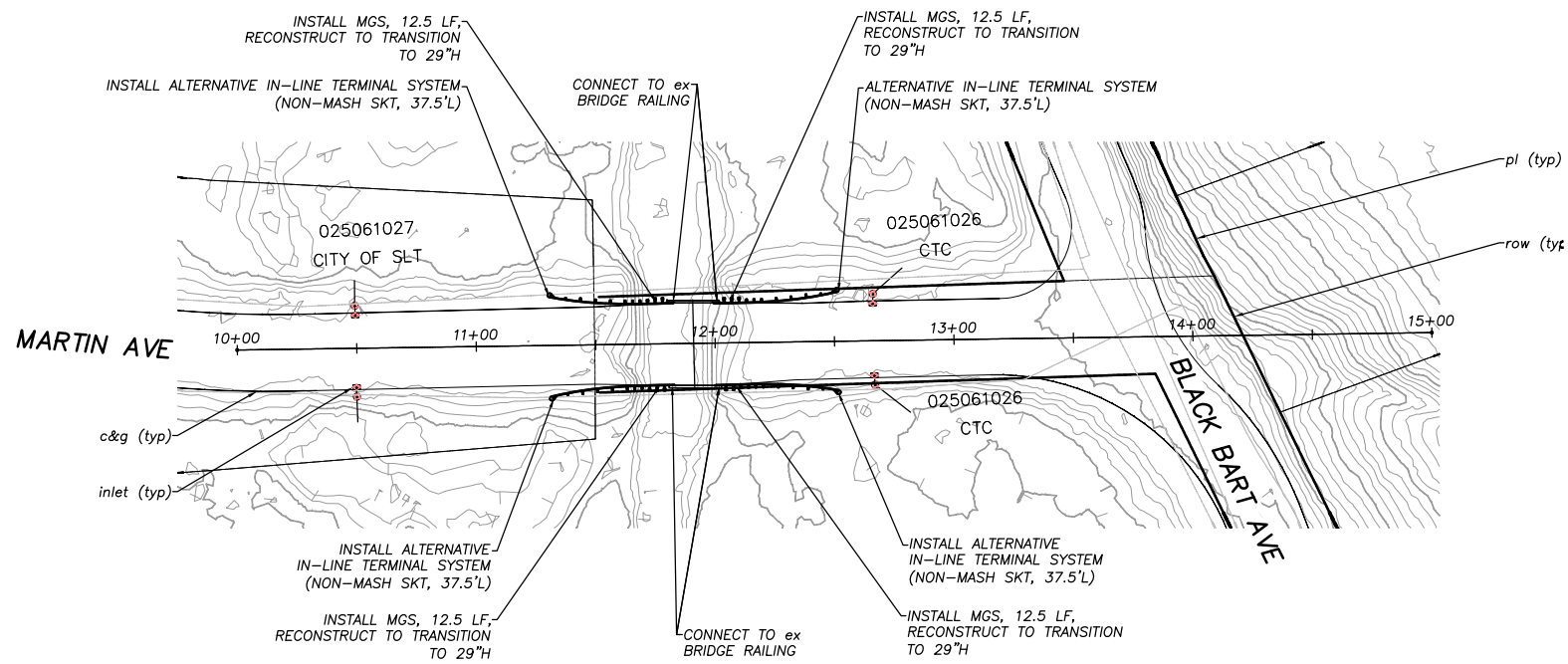
SHEET **P-1**
4 OF 10

CONTRACT NO. **4576**
CIP No. **72198**

!! WARNING !!

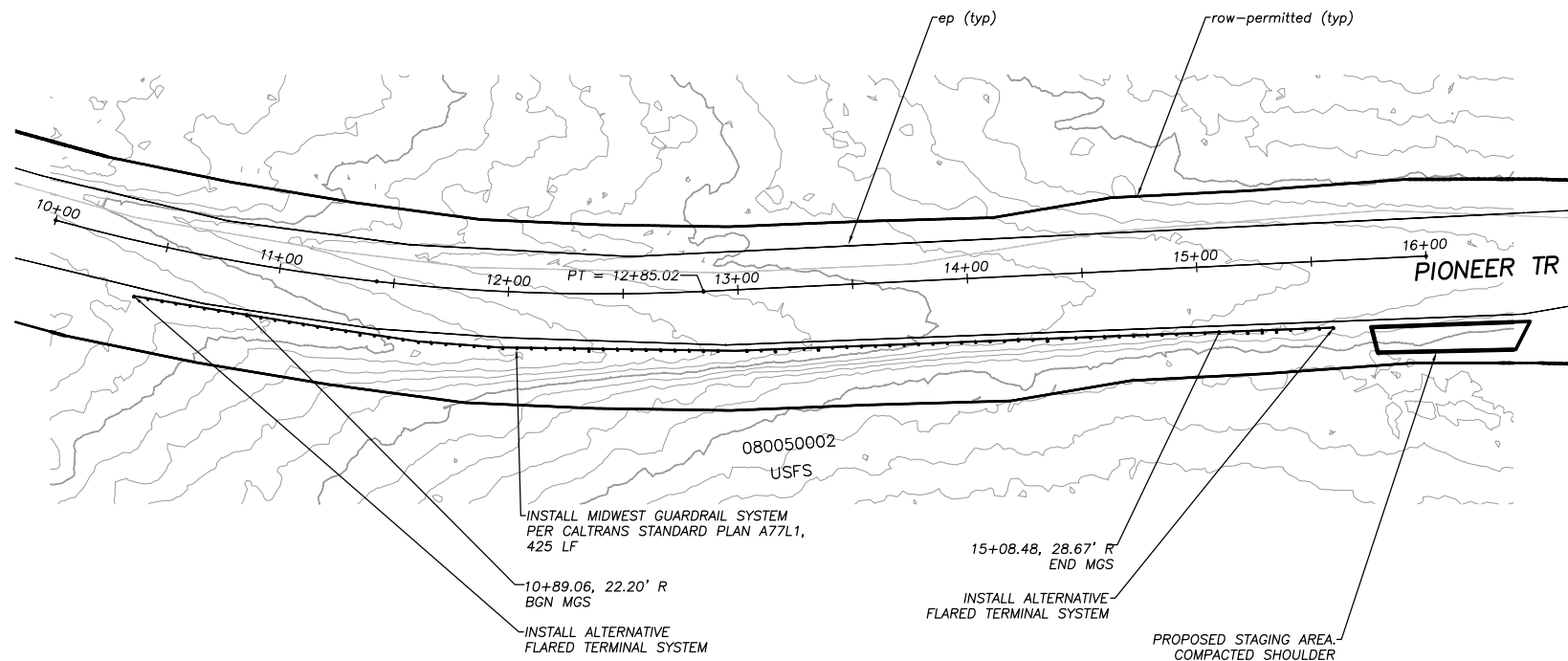
THE LOCATION AND/OR ELEVATION OF EXISTING UNDERGROUND UTILITIES SHOWN ON THESE PLANS ARE ONLY APPROXIMATE. CONTRACTOR TO VERIFY LOCATION AND ELEVATION OF ALL EXISTING UNDERGROUND UTILITIES.

NOTE:
THIS PROJECT IS LOCATED IN AN ENVIRONMENTALLY SENSITIVE AREA. YOU MUST EXERCISE UTMOST CARE TO PROTECT AND MAINTAIN EXISTING VEGETATION AND MINIMIZE SOIL COMPACTION WITHIN CONSTRUCTION AREAS.



MARTIN AVE AT TROUT CREEK

PLAN
SCALE: HORIZ 1" = 40'



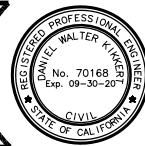
PIONEER TR NEAR JICARILLA DR

PLAN
SCALE: HORIZ 1" = 40'

Drawing name: \\data\td\sl\Engineering\Civil_3D PROJECTS\72198 - Guardrail Upgrades\MP\PLAN\GUARDRAIL_UPDATE.dwg

FOR REDUCED PLANS ORIGINAL SCALE IS IN INCHES

REVISION	NUMBER	DATE	DESCRIPTION	BY



PREPARED UNDER THE SUPERVISION OF:
[Signature]
REGISTERED CIVIL ENGINEER
DATE: **JUNE 25, 2020**

DESIGNED: DMG
DRAWN: DMG
CHECKED: DWK
DATE: 6/2020
ROAD NUMBER: ---



COUNTY OF EL DORADO
DEPARTMENT OF TRANSPORTATION

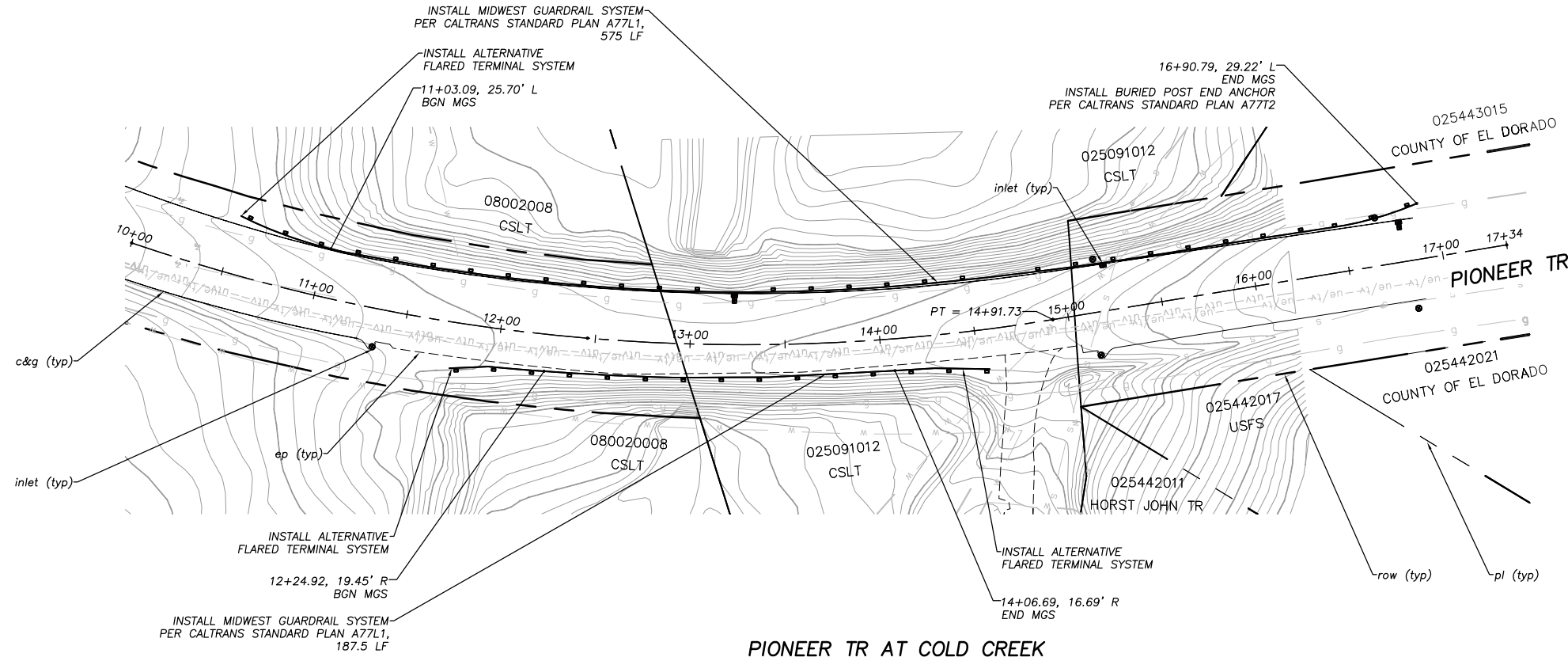
GUARDRAIL UPGRADES - TAHOE PROJECT
TROUT CREEK AT MARTIN AVE
PIONEER TR NEAR JICARILLA DR

SHEET
P-4
7 OF 10
CONTRACT NO.
4576
CIP No.
72198

!! WARNING !!

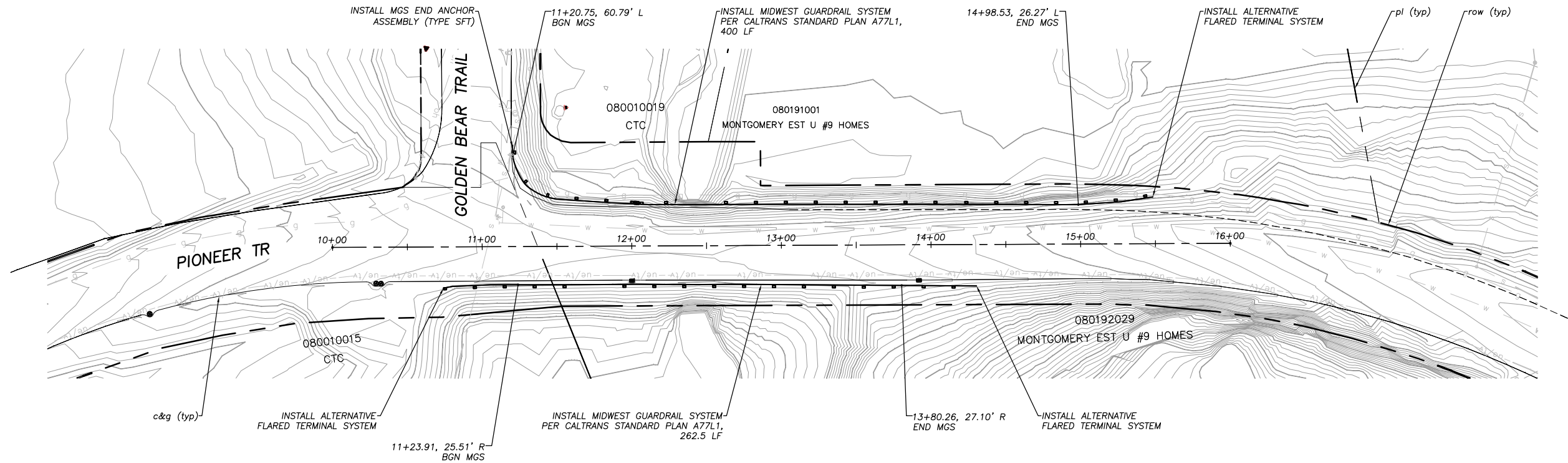
THE LOCATION AND/OR ELEVATION OF EXISTING UNDERGROUND UTILITIES SHOWN ON THESE PLANS ARE ONLY APPROXIMATE. CONTRACTOR TO VERIFY LOCATION AND ELEVATION OF ALL EXISTING UNDERGROUND UTILITIES.

NOTE:
THIS PROJECT IS LOCATED IN AN ENVIRONMENTALLY SENSITIVE AREA. YOU MUST EXERCISE UTMOST CARE TO PROTECT AND MAINTAIN EXISTING VEGETATION AND MINIMIZE SOIL COMPACTION WITHIN CONSTRUCTION AREAS.



PIONEER TR AT COLD CREEK

PLAN
SCALE: HORIZ 1" = 40'



PIONEER TR AT TROUT CREEK

PLAN
SCALE: HORIZ 1" = 40'

Drawing name: \\C:\data\td-slt-Engineering\Civil_3D PROJECTS\72198 - Guardrail Upgrade\Engineering\PLAN\GUARDRAIL_UPDATE.dwg

FOR REDUCED PLANS
2 ORIGINAL SCALE IS IN INCHES
1
0

REVISION	NUMBER	DATE	DESCRIPTION	BY



PREPARED UNDER THE SUPERVISION OF:
[Signature]
REGISTERED CIVIL ENGINEER
DATE: **JUNE 25, 2020**

DESIGNED: DMG
DRAWN: DMG
CHECKED: DWK
DATE: 6/2020
ROAD NUMBER: ---

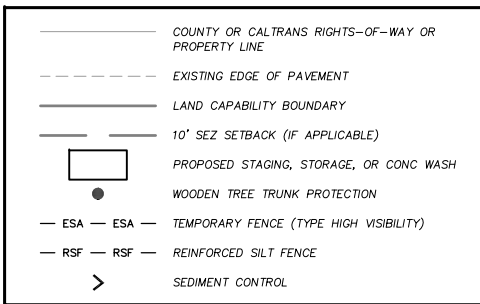


COUNTY OF EL DORADO
DEPARTMENT OF TRANSPORTATION

GUARDRAIL UPGRADES - TAHOE PROJECT
PIONEER TRAIL AT
COLD CREEK AND TROUT CREEK

SHEET
P-3
6 OF 10
CONTRACT NO.
4576
CIP No.
72198

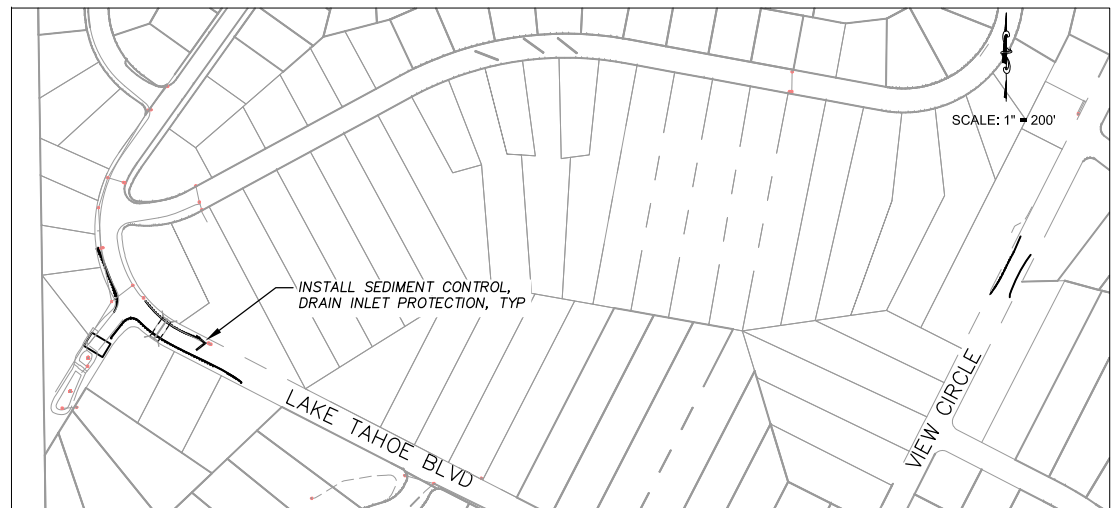
LEGEND



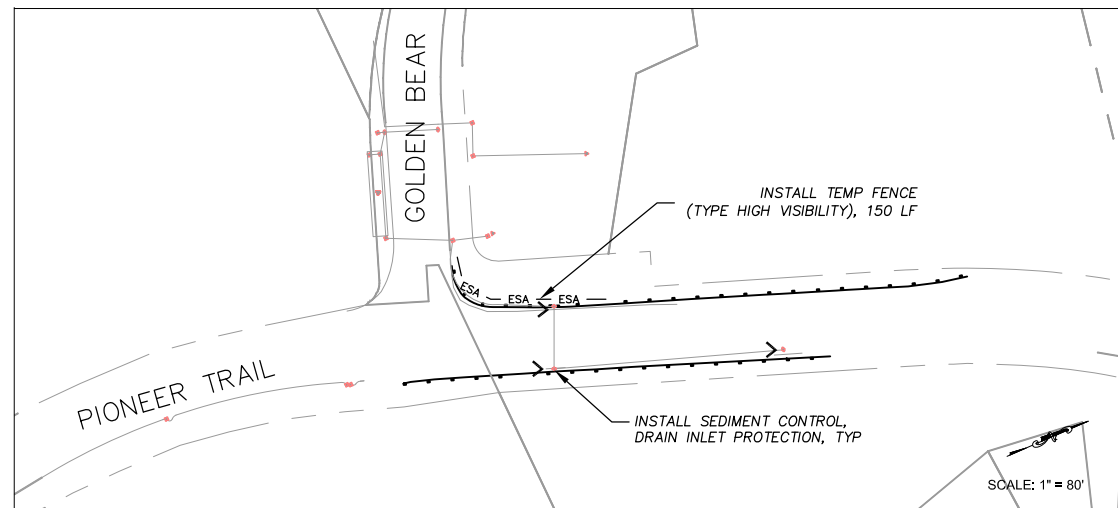
NOTES:

1. THIS PLAN HAS BEEN PREPARED AS A GUIDE FOR YOU IN PREPARATION OF A COMPLETE EROSION CONTROL PLAN AND TO AID IN YOUR PLANNING FOR STAGING/STORAGE OF MATERIALS AND EQUIPMENT. YOUR EROSION CONTROL PLAN WILL INCLUDE DETAILED CONTROLS INCLUDING DRAINAGE INLET PROTECTION, CURB AND GUTTER FLOWLINE PROTECTION.
2. YOUR EROSION CONTROL PLAN WILL ADDRESS CONSTRUCTION ACTIVITIES THAT INCLUDE GROUND DISTURBANCE AND TRACKING OF SOILS, AND WILL CONFORM TO THE SPECIAL PROVISIONS. YOUR TRAFFIC CONTROL PLAN WILL ALSO INCLUDE A SPILL CONTINGENCY PLAN WITH APPROPRIATE CONTACT INFORMATION.
3. ALL MATERIAL PILES WILL BE COVERED AND SECURED AT THE END OF EACH WORK DAY.
4. YOU WILL NOT EXCAVATE MORE THAN CAN BE INSTALLED AND BACKFILLED IN ONE WORKING DAY.
5. YOUR ATTENTION IS DIRECTED TO THE COUNTY PREPARED SWPPP AND THE SPECIAL PROVISIONS REGARDING TEMPORARY EROSION CONTROL REQUIREMENTS FOR STAGING AREAS.
6. STAGING AREAS SHOWN ARE FOR THE TEMPORARY STORAGE OF CONSTRUCTION MATERIALS AND EQUIPMENT WHICH ARE TO BE USED ON THIS PROJECT.

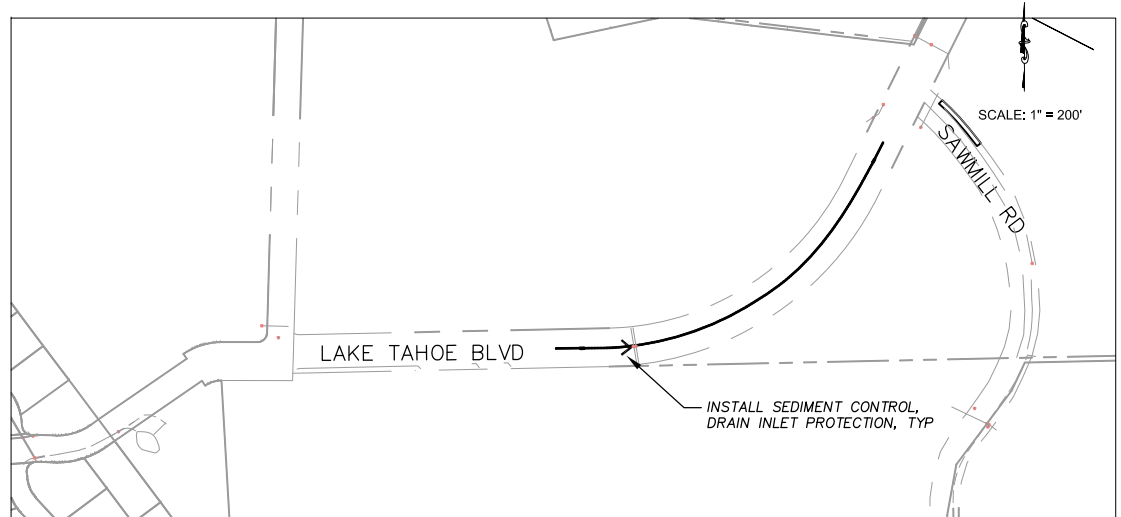
NOTE:
THIS PROJECT IS LOCATED IN AN ENVIRONMENTALLY SENSITIVE AREA. YOU MUST EXERCISE UTMOST CARE TO PROTECT AND MAINTAIN EXISTING VEGETATION AND MINIMIZE SOIL COMPACTION WITHIN CONSTRUCTION AREAS.



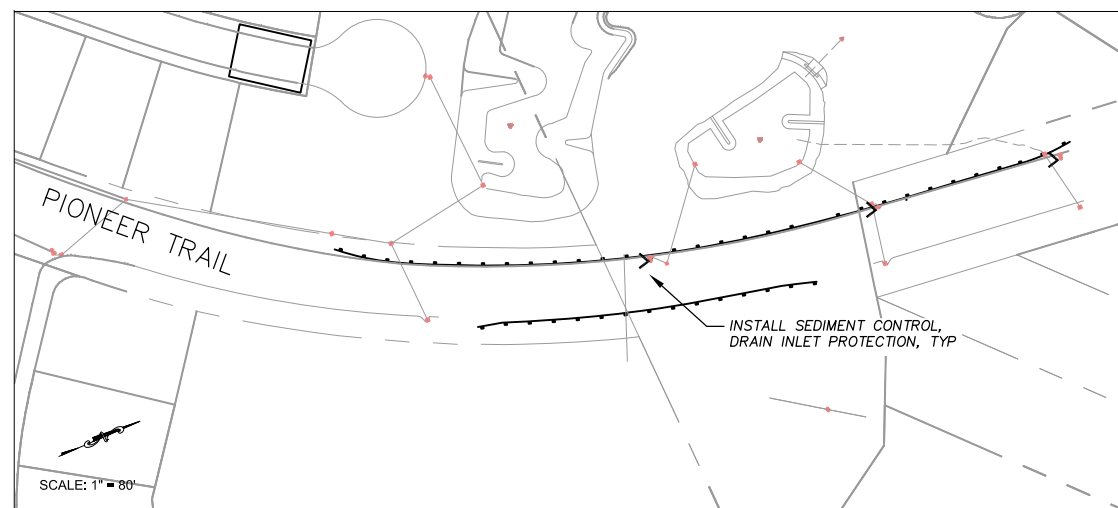
LAKE TAHOE BLVD AT ANGORA CREEK AND
VIEW CIRCLE AT ANGORA CREEK



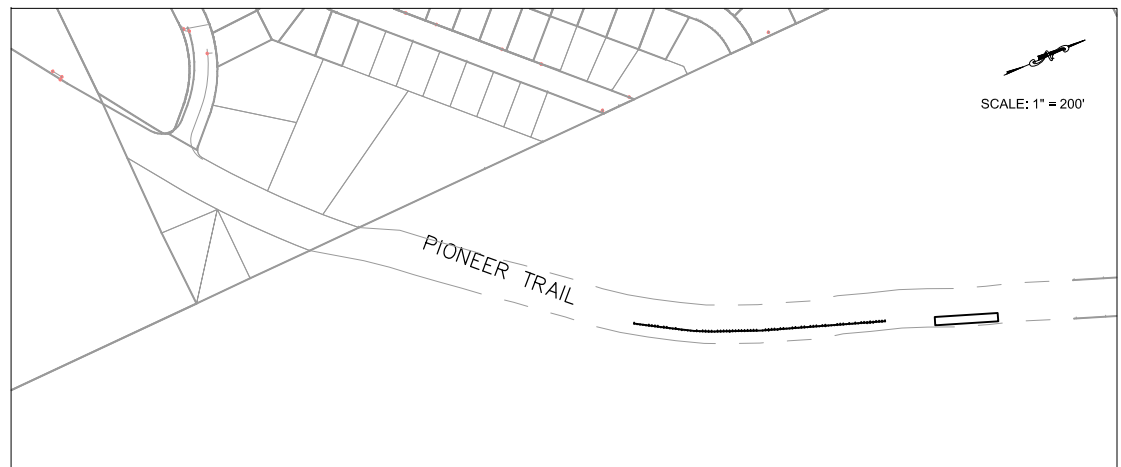
PIONEER TRAIL AT TROUT CREEK



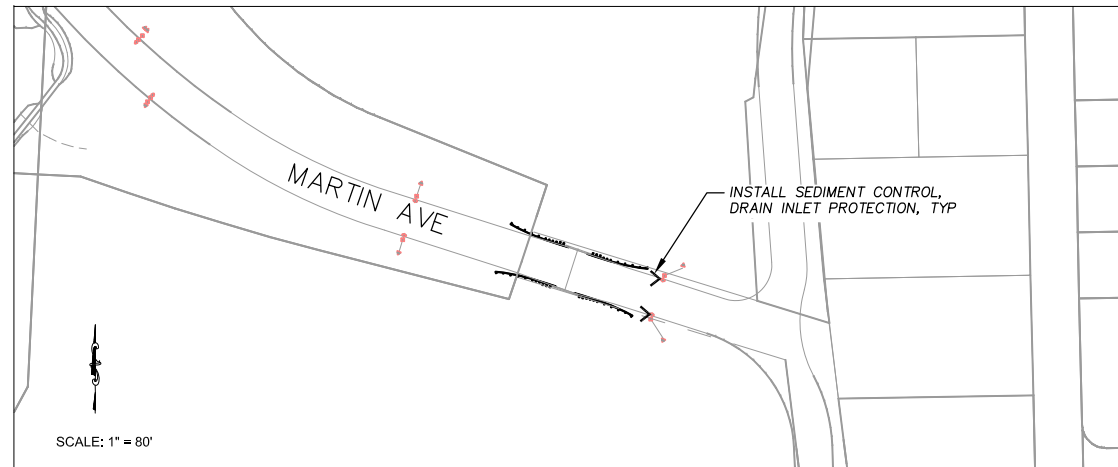
LAKE TAHOE BLVD AT SAWMILL RD



PIONEER TRAIL AT COLD CREEK

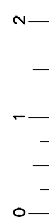


PIONEER TRAIL NEAR JICARILLA



MARTIN AVE AT TROUT CREEK

FOR REDUCED PLANS ORIGINAL SCALE IS IN INCHES



REVISION	NUMBER	DATE	DESCRIPTION	BY



PREPARED UNDER THE SUPERVISION OF:
[Signature]
REGISTERED CIVIL ENGINEER
DATE: **JUNE 25, 2020**

DESIGNED: DMG
DRAWN: DMG
CHECKED: DWK
DATE: 6/2020
ROAD NUMBER: ---



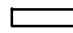
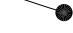
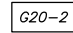
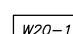
**COUNTY OF EL DORADO
DEPARTMENT OF TRANSPORTATION**

**GUARDRAIL UPGRADES - TAHOE PROJECT
EROSION CONTROL**

SHEET
EC-1
8 OF 10
CONTRACT NO.
4576
CIP No.
72198

Drawing name: \\C:\Data\GIS\TD-S\T-Engineering\Civil_3D\PROJECTS\72198 - Guardrail Upgrade\Engineering\MPLAN\6 GUARDRAIL TC-1.dwg

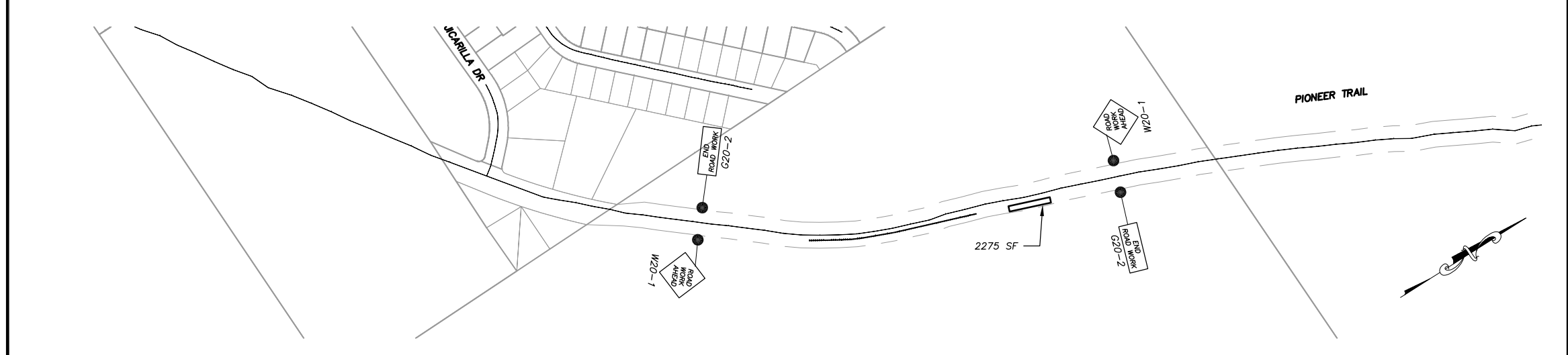
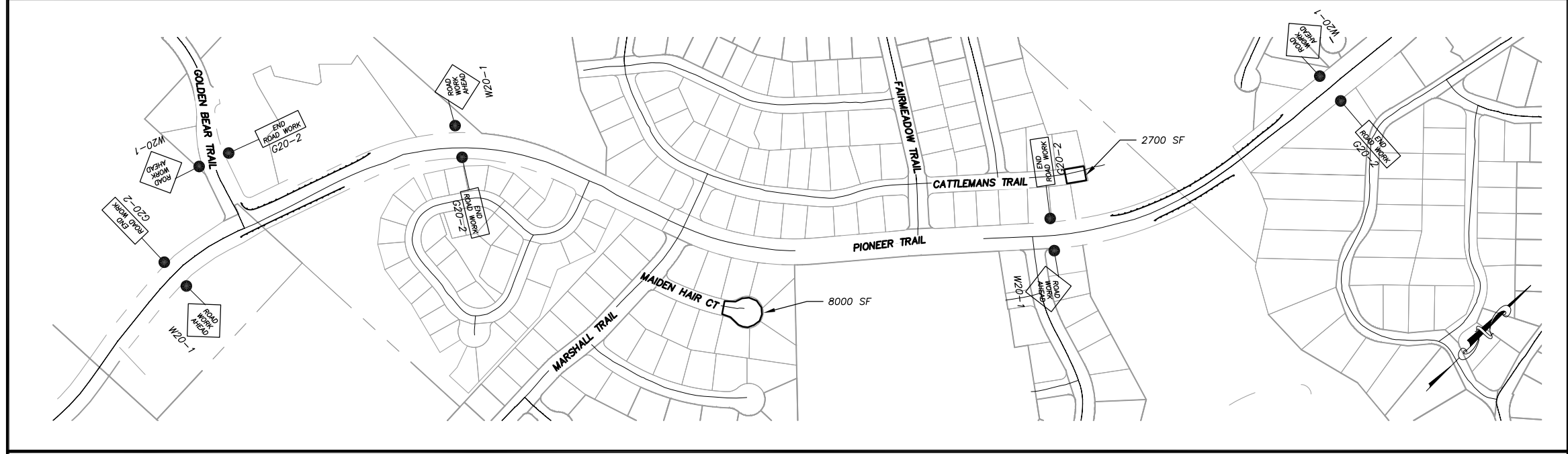
LEGEND

-  PROPOSED STAGING AREA WITH SF
-  APPROXIMATE SIGN LOCATION
-  "END ROAD WORK" SIGN
-  "ROAD WORK AHEAD" SIGN

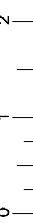
SCALE: 1"=200'

NOTES:

1. THIS PLAN HAS BEEN PREPARED AS A GUIDE FOR YOU IN PREPARATION OF A COMPLETE TRAFFIC CONTROL PLAN AND TO AID IN YOUR PLANNING FOR STAGING/STORAGE OF MATERIALS AND EQUIPMENT. YOUR TRAFFIC CONTROL PLAN WILL INCLUDE DETAILED CONTROLS INCLUDING FLAGGERS, LANE CLOSURES, AND SIGNS FOR ALL ITEMS OF ROAD WORK WHICH WILL REQUIRE ALTERATION OF EXISTING TRAFFIC PATTERNS. THE LEGEND SHOWS THE LIST OF SIGNS TO BE REQUIRED AS A MINIMUM.
2. YOUR TRAFFIC CONTROL PLAN WILL ADDRESS EACH PHASE OF CONSTRUCTION (e.g. GUARDRAILS, STRUCTURES ADJACENT TO AND/OR AFFECTING THE ROADWAY, ETC.) AND WILL CONFORM TO PART 6 OF THE CALIFORNIA MUTCD ENTITLED "TEMPORARY TRAFFIC CONTROL" AND THE SPECIAL PROVISIONS. YOUR TRAFFIC CONTROL PLAN WILL ALSO INCLUDE ALL SIGNING REQUIRED AT INTERSECTING STREETS WITHIN THE AREA THAT WILL REQUIRE TRAFFIC CONTROL.
3. SINGLE LANE CLOSURES WILL BE ALLOWED FOR THE INSTALLATION OF THE GUARDRAILS (VARIOUS LOCATIONS). AT ALL OTHER TIMES, TWO LANES OF TRAFFIC WILL BE MAINTAINED.
4. AT THE END OF EACH WORK DAY A MINIMUM OF TWO 10 FOOT LANES WILL BE OPENED TO PUBLIC TRAFFIC. NO LANE CLOSURE WILL PREVENT RESIDENTS FROM ACCESS TO THEIR PROPERTY.
5. WHEN LANE CLOSURES ARE REMOVED AND ROADS ARE OPEN TO PUBLIC TRAFFIC, ALL DRIVEWAYS WITHIN THE WORK AREA WILL BE ACCESSIBLE AND OPERATIONAL.
6. YOU WILL NOT EXCAVATE MORE THAN CAN BE INSTALLED AND BACKFILLED IN ONE WORKING DAY.
7. YOUR TRAFFIC CONTROL PLAN WILL INCLUDE SIGNAGE ON PINE STREET FOR TRAFFIC CONTROL RELATED TO TRUCKS ENTERING THE ROADWAY FROM THE PROJECT AREA.
8. YOUR ATTENTION IS DIRECTED TO THE SWPPP, TEMPORARY EROSION CONTROL SHEETS, REVEGETATION PLAN SHEET, AND THE SPECIAL PROVISIONS REGARDING TEMPORARY EROSION CONTROL REQUIREMENTS FOR STAGING AREAS.
9. STAGING AREAS SHOWN ARE FOR THE TEMPORARY STORAGE OF CONSTRUCTION MATERIALS AND EQUIPMENT WHICH ARE TO BE USED ON THIS PROJECT.

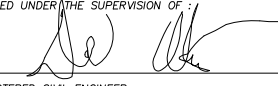


FOR REDUCED PLANS ORIGINAL SCALE IS IN INCHES



REVISION	NUMBER	DATE	DESCRIPTION	BY



PREPARED UNDER THE SUPERVISION OF:

 REGISTERED CIVIL ENGINEER
JUNE 25, 2020
 DATE:

DESIGNED: DMG
 DRAWN: DMG
 CHECKED: DWK
 DATE: 6/2020
 ROAD NUMBER: ---



COUNTY OF EL DORADO
DEPARTMENT OF TRANSPORTATION

GUARDRAIL UPGRADES - TAHOE PROJECT
TRAFFIC CONTROL

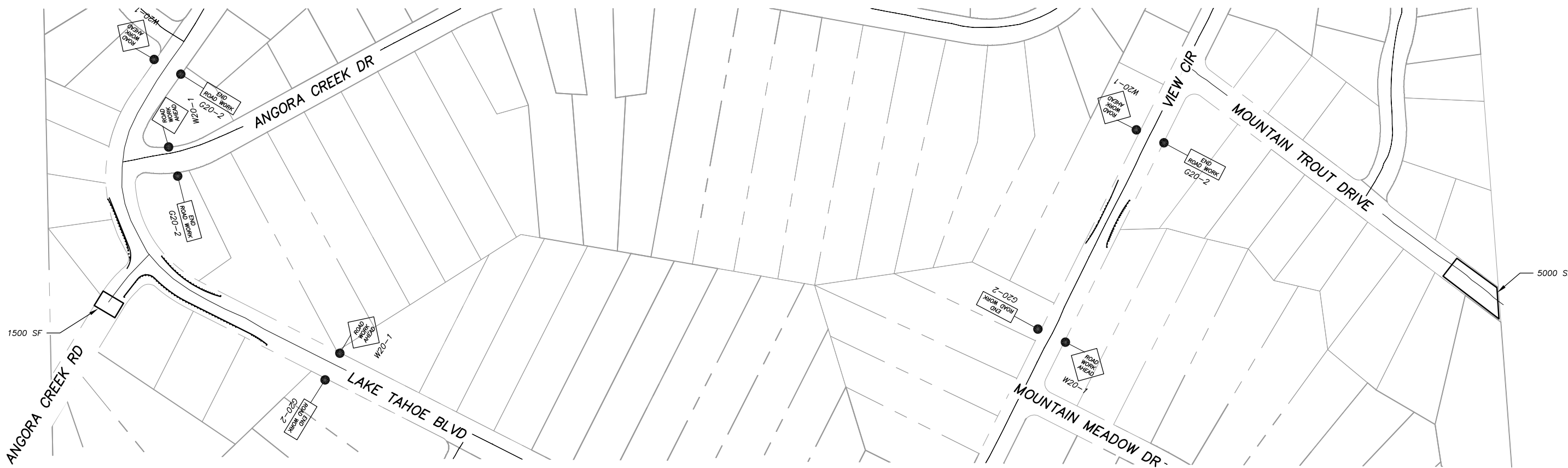
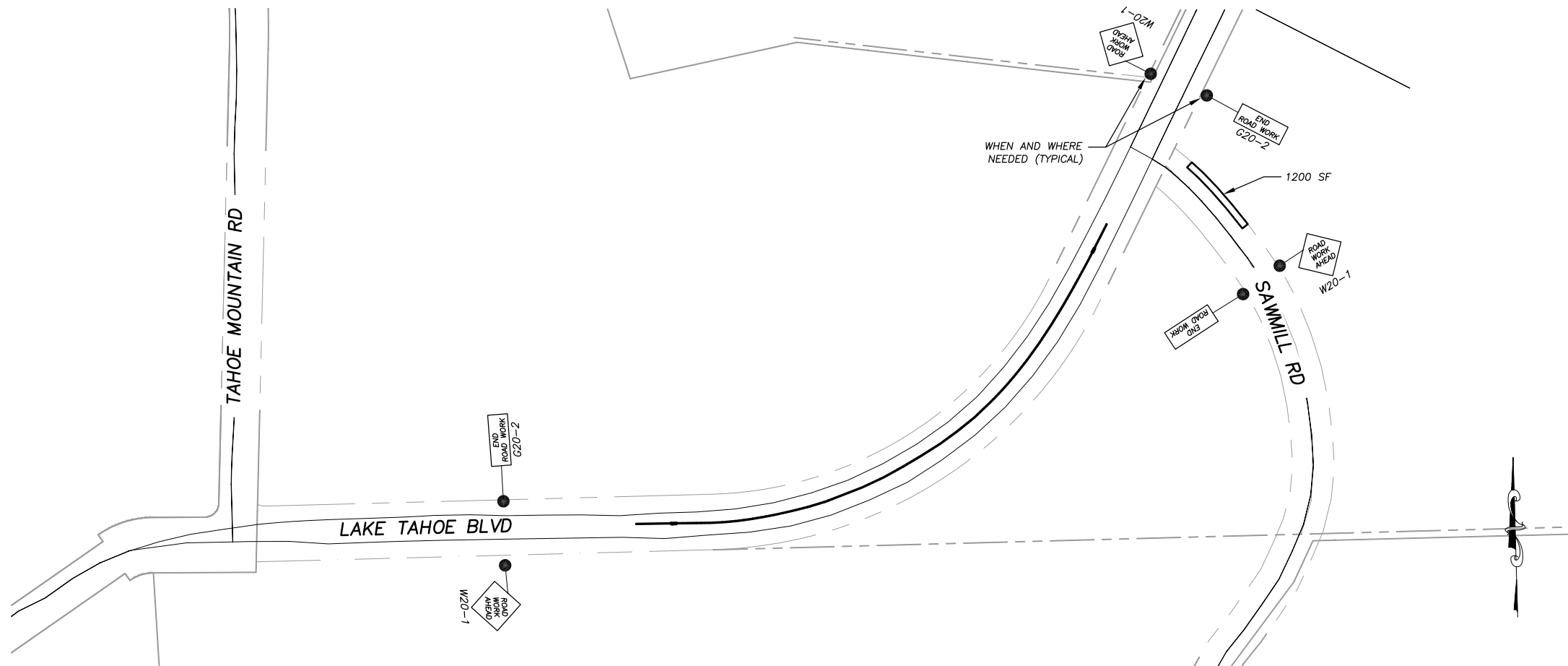
SHEET
TC-1
 9 OF 10
 CONTRACT NO.
4576
 CIP No.
72198

Drawing name: \\C:\Data\GIS\TD-SIT-Engineering\Civil_3D\PROJECTS\72198 - Guardrail Upgrade\Engineering\PLAN\6 GUARDRAIL TC-1.dwg

LEGEND

- PROPOSED STAGING AREA WITH SF
- APPROXIMATE SIGN LOCATION
- G20-2 "END ROAD WORK" SIGN
- W20-1 "ROAD WORK AHEAD" SIGN

SCALE: 1"=100'



FOR REDUCED PLANS
2 ORIGINAL SCALE IS IN INCHES
1
0

REVISION	NUMBER	DATE	DESCRIPTION	BY



PREPARED UNDER THE SUPERVISION OF:

 REGISTERED CIVIL ENGINEER
JUNE 25, 2020
 DATE:

DESIGNED: DMG
 DRAWN: DMG
 CHECKED: DWK
 DATE: 6/2020
 ROAD NUMBER: ---



COUNTY OF EL DORADO
 DEPARTMENT OF TRANSPORTATION

GUARDRAIL UPGRADES - TAHOE PROJECT
 TRAFFIC CONTROL

SHEET
TC-2
 10 OF 10
 CONTRACT NO.
4576
 CIP No.
72198