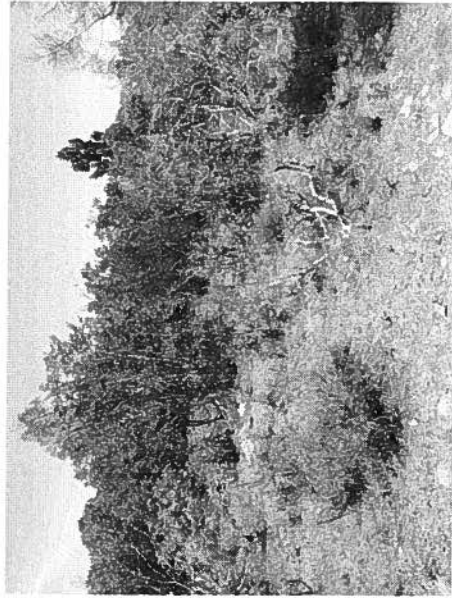


# Conservation of Gabbro Soils Rare Plants in El Dorado County



A collaborative approach

# What is a Conservation Strategy?

A plan that prescribes standards and guidelines which provide a high likelihood that the plant, animal, or ecosystem will continue to exist.

# Why a Conservation Strategy?

In 2002, U.S. Fish and Wildlife Service issued a Final Recovery Plan for gabbro soils plants.

- ▶ Provides an agreed upon framework for the protection of gabbro plants and their habitat.
- ▶ Improves and streamlines the environmental review and permitting process.
- ▶ Develops a partnership between numerous parties.

# Benefits of a Strategy

Strategy Provides for Assurances and Facilitates a Streamlined Process for:

- California Environmental Quality Act
- California Endangered Species Act
- National Environmental Policy Act
- Endangered Species Act

# Conservation Strategy Partners

- ▶ American River Conservancy
- ▶ Bureau of Land Management
- ▶ Bureau of Reclamation
- ▶ California Department of Fish and Game
- ▶ California Native Plant Society
- ▶ El Dorado County
- ▶ El Dorado Irrigation District
- ▶ U.S. Fish and Wildlife Service

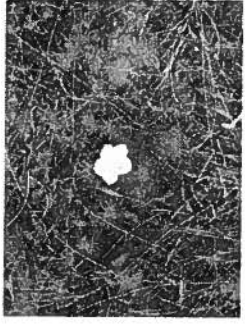
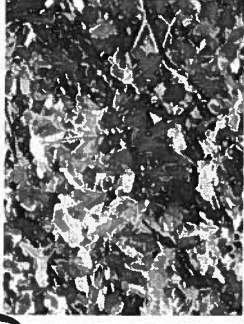
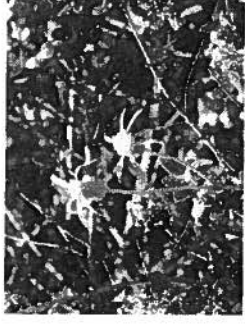


# Outcome

To achieve the long-term persistence of eight rare plant species associated with the gabbro soils in El Dorado County while allowing for planned development and the pursuit of a safe and reliable water supply within the County.

# Eight Rare Plants

- ▶ El Dorado bedstraw (FE, SR)
- ▶ Layne's butterweed (FT, SR)
- ▶ Pine Hill ceanothus (FE SR)
- ▶ Pine Hill flannelbush (FE, SR)
- ▶ Stebbins' morning glory (FE, SE)
- ▶ Bisbee Peak rose rush
- ▶ El Dorado mule ears
- ▶ Red Hills soaproot



# Goals

## 1. Assess effects and adequately mitigate

To provide a mechanism by which El Dorado County can assess effects of development on gabbro soils plants and adequately mitigate project impacts.

## 2. Conservation and Recovery

To establish a long-term conservation program sufficient to mitigate potential adverse effects of future development on gabbro soils plants within western El Dorado County, and to conserve and contribute to the recovery of the listed species and the conservation of their limited habitat.



# Goals

## 3. Funding

To establish a funding mechanism adequate to provide for the permanent protection and management of gabbro soils plants.

## 4. Facilitate CESA Permitting

To provide a mechanism to support issuance of an authorization for incidental take of *Calystegia stebbinsii* (Stebbins Species Act morning glory) under the California Endangered Species Act that may occur in the course of carrying out a broad range of development-related activities within El Dorado County.

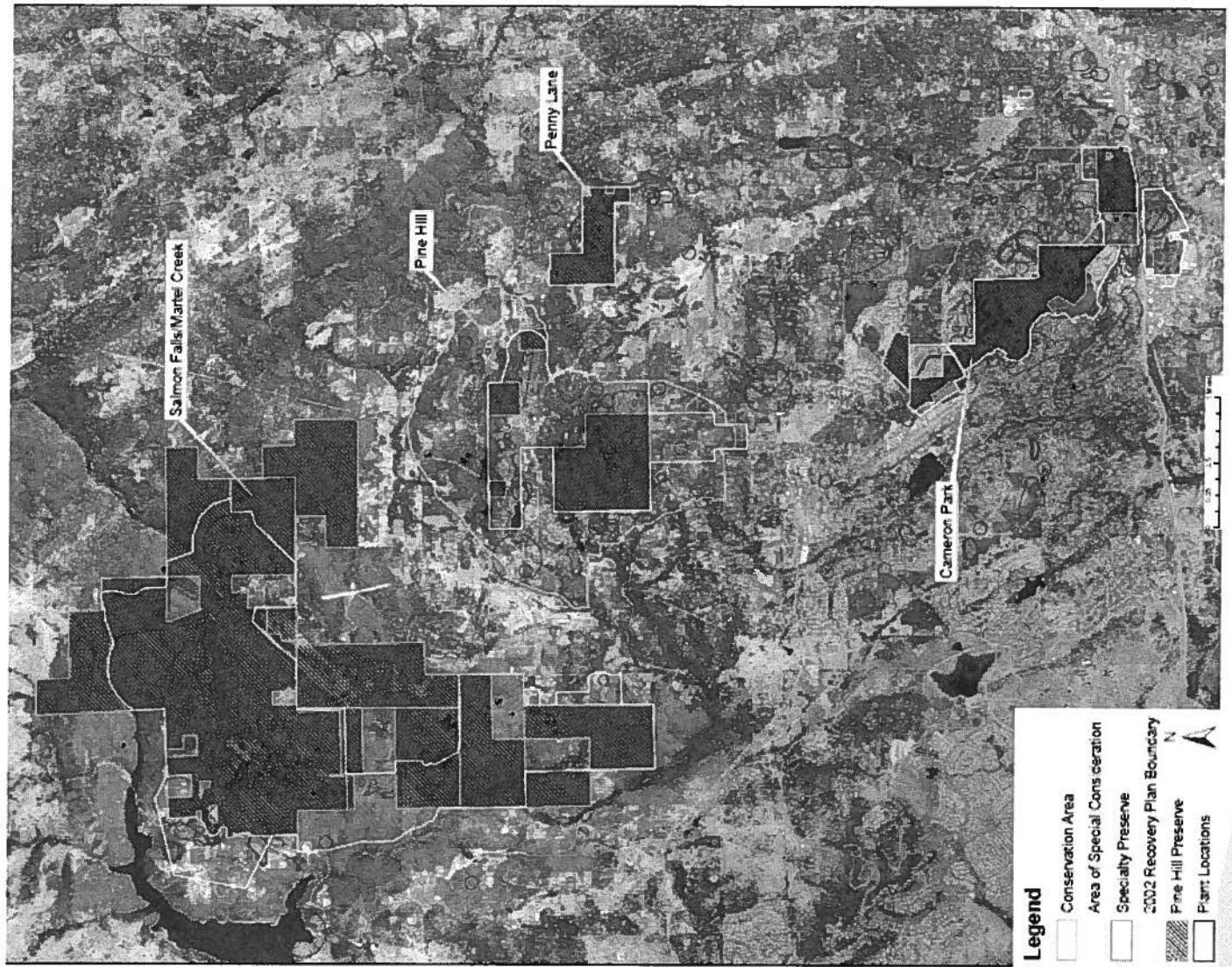
# Major Focus of the Conservation Strategy

Identification of an area where habitat conservation should occur

# The team took into account

- ▶ Distribution of each of the eight rare plants
- ▶ Current land use (including currently-conserved areas)
- ▶ Biological needs and targets of each plant species
- ▶ Management considerations (including prescribed fire)

# Conservation Area

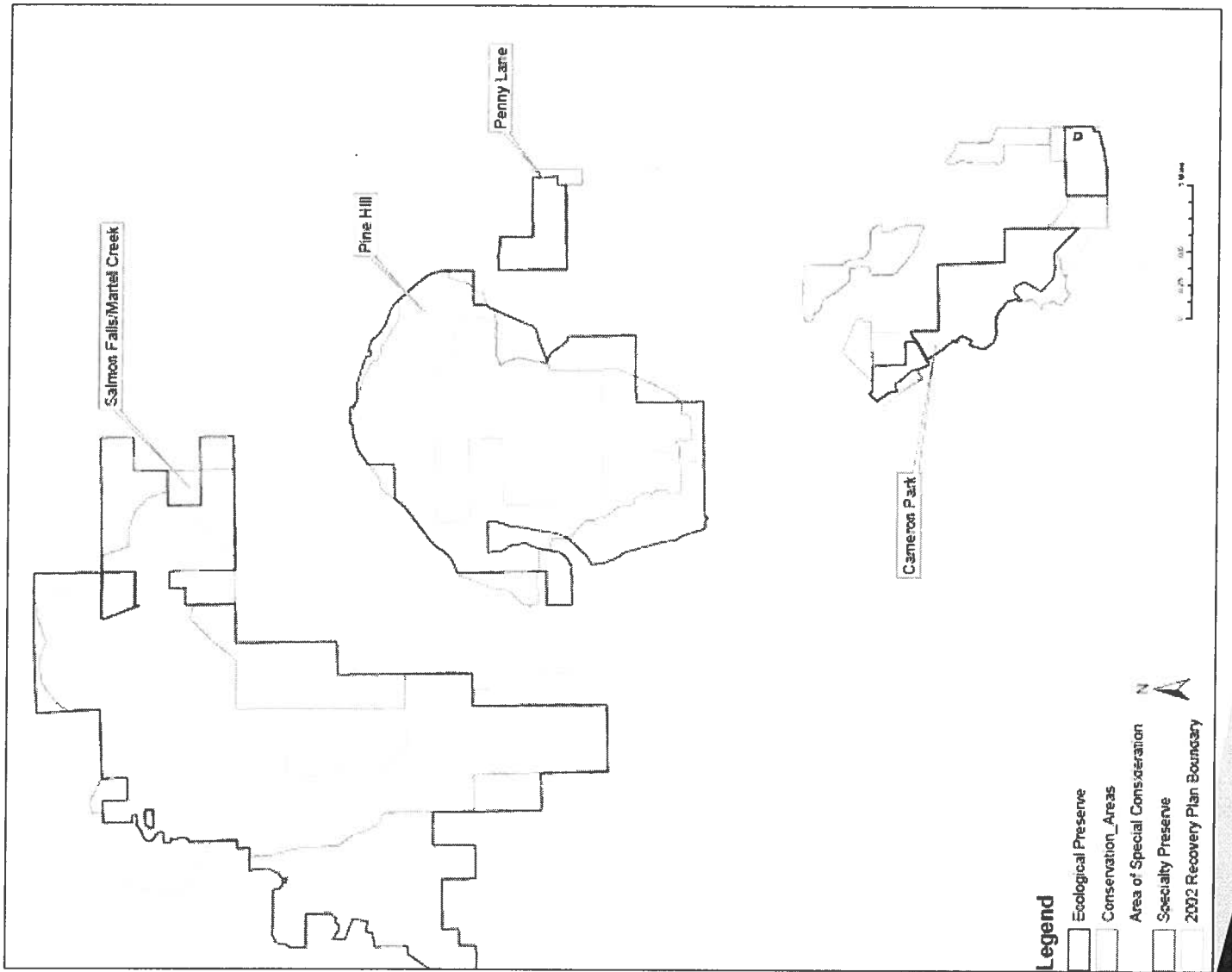


# Conservation Area

- ▶ Area where focused habitat protection should occur through:
  - Willing sellers
  - Fee title acquisition
  - Conservation easements
- ▶ Enhancement of habitat
- ▶ Preservation of existing habitats on private property
- ▶ Permit development in a way that maintains the integrity of the habitat

# Conservation Area

(in comparison  
to El Dorado County's  
current Ecological  
Preserve)



# Ecological Preserve

Established by El Dorado County in order to “provide for the permanent protection of the eight sensitive plant species”

Current ordinances provide for special protections and mitigations for impacts to the eight rare plant species

*“those properties in public or private ownership which have potential to be established or have been established as habitat preserve areas for rare or endangered plant and animal species and/or critical wildlife habitat and/or natural communities of high quality” – EDC*

# Early Implementation

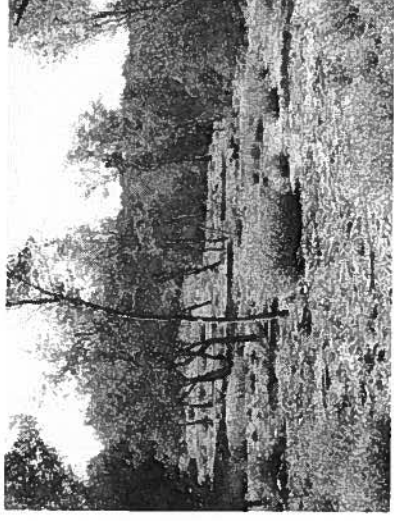
Funds currently available can be utilized for the protection of habitat, either by:

1. Mitigation for past impacts; or
2. Advanced mitigation for future impacts  
(with reimbursement of funds at time of impact)



# Next Steps

- ▶ Completing written strategy documents
- ▶ Identifying steps for strategy implementation



# Questions?

