

ope
Holidays



PROBATION DEPARTMENT OVERVIEW



VISION

SAFE COMMUNITIES THROUGH CHANGED LIVES

MISSION

PROVIDING PUBLIC SAFETY THROUGH COLLABORATIVE PARTNERSHIPS AND INNOVATIVE PRACTICES IN CORRECTIONS, WITH ACCOUNTABILITY AND COMPASSION

VALUES

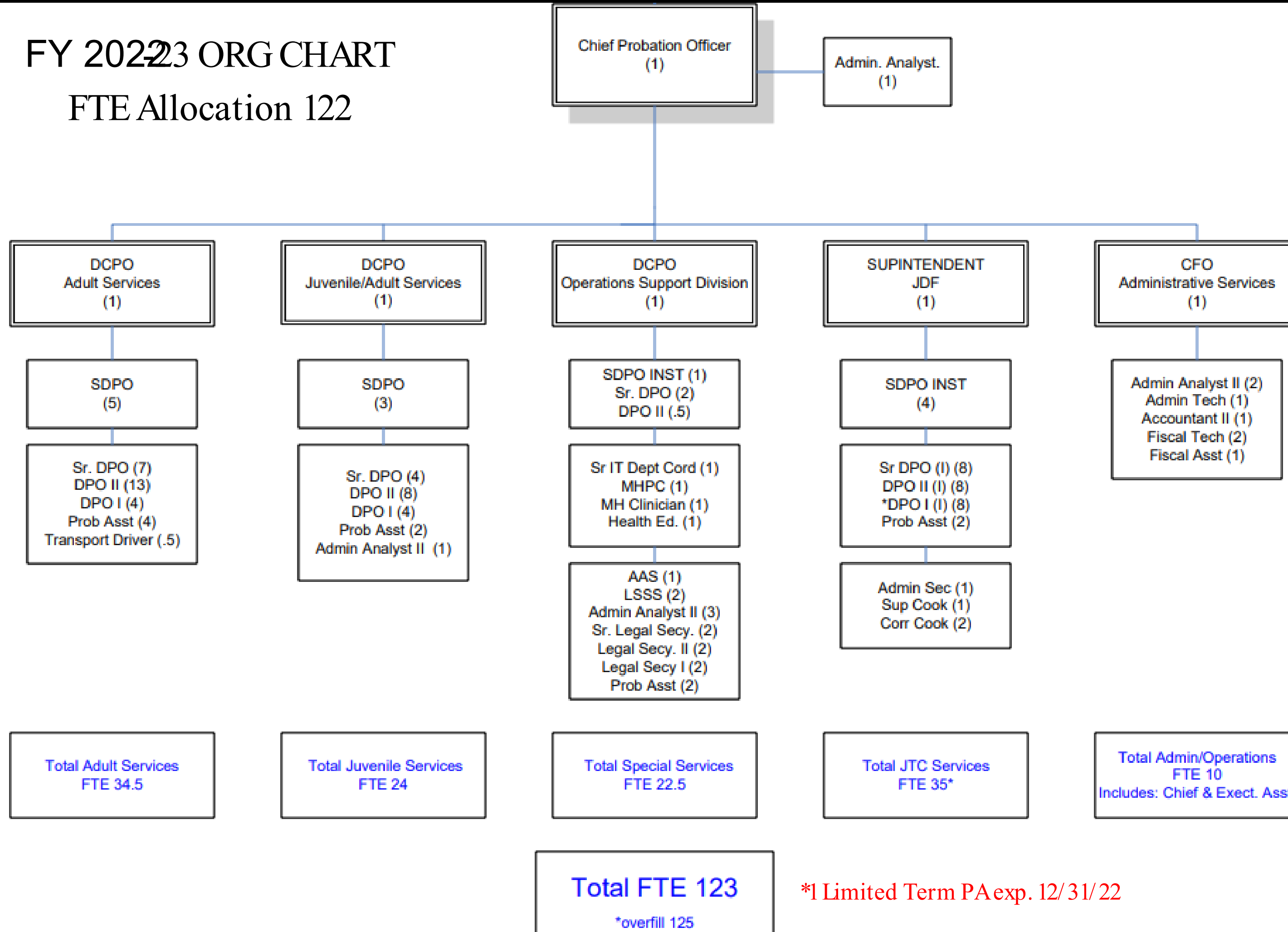
We Believe That Our Well-Trained, Dedicated, and Compassionate Employees are the Probation Department's Most Valuable Asset

We are Committed to:

- **Respecting Human Rights and Diversity**
- **Fostering Transparency Through Accountability and Communication**
- **Providing Exemplary Service by Leading With Integrity, Humility, Honesty, and Equality**

FY 2023 ORG CHART

FTE Allocation 122

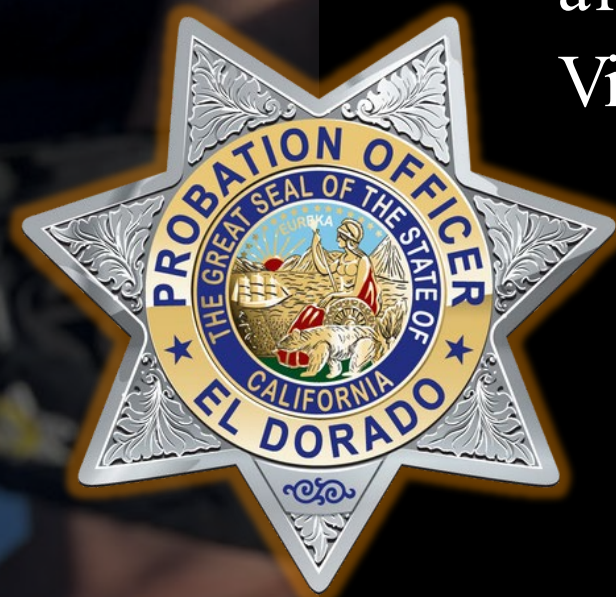


*1 Limited Term PA exp. 12/31/22



ADULT PROBATION SERVICES

Adult Probation Services are focused in several areas including Pretrial Services, Adult Court Services, Field Supervision, Electronic Monitoring, Community Corrections Center services, Vocational Job Services, a Transitional Living Program, and Victim Services. The goal of the Adult Services Division is to be effective in our efforts to reduce recidivism for Justice-Involved Individuals through evidence-based decision-making by understanding each individual's risk and needs, and by how an officer responds. Assessments are used to guide supervision decision-making along several dimensions with the goal of strategic use of our community resources, which requires appropriate matching of treatment to the level of the criminogenic need. Risk level for each individual determines the intensity and frequency of supervision by an officer. Specialized caseloads are also in place for sex offenses, DUI, Military Veterans, Domestic Violence, and individuals with behavioral health challenges.



JUVENILE PROBATION SERVICES

The Juvenile Probation Services division is responsible for countywide community supervision of the youth who are under a term of probation supervision, utilizing risk and needs assessments to determine criminogenic needs, resulting in an individually-based service plan unique to each youth. Officers in this division coordinate intake services (prevention and diversion) for youth as well as delivery of family-based services. Juvenile Court Officers represent the department in all juvenile hearings and complete investigations and recommendation reports to the Superior Court, based on needs of the youth and community safety with victim input. Supervision of youth is guided by risk level and includes enforcement of court orders, referrals to counseling and may include electronic monitoring, community service and victim restoration. Specialized juvenile caseloads consist of Dual Status Youth (DSY) and Placement/Foster Care, where collaboration with partner agencies (Child Welfare, Behavioral Health and Education) and Child & Family Team meetings promote the youth's strengths and goals in service plan development and rehabilitation efforts.



JUVENILE RESIDENTIAL FACILITY

The South Lake Tahoe Juvenile Treatment Center is a 40 bed, medium-security juvenile detention facility where youth await adjudication of cases for delinquent acts and engage in court-ordered programs and interventions to promote rehabilitation and public safety. This juvenile residential facility provides mandated services and treatment programs to incarcerated youth, supporting provisions of five court-ordered disposition programs: Chances, a short term transition commitment to establish stabilizing and treatment services for the youth out of custody prior to release (for up to 30 days), Choices (for up to 90 days), Changes (for up to 180 days), Challenge, a camp commitment for moderate to high risk youth (for up to 240 days), and Cedar Secure Track for youth who qualify pursuant to Welfare and Institutions Code 208.5. Youth are assessed for risk and need and provided treatment interventions in each program to address their top criminogenic needs and acute needs. All facilities within the State must comply with State Title 15 and Title 24 regulations covering staffing ratios (staff-to-juvenile), care and custody programming, housing conditions, facility maintenance, medical, educational, and treatment services, and safe transportation to services outside of the facility.



OPERATIONS SUPPORT DIVISION

The Operations Support Division provides comprehensive program support and development to the entire Department. This division leads the advancement and preservation of policy, procedure, and evidence-based and best practices for all Department training and program development. This division also provides central Department services such as information technologies, developing internal software, information support services, data research, analytics, reporting, and human resources functions. In addition, members of this division support, administer, and organize the Community Corrections Partnership.



FISCAL-ADMINISTRATION DIVISION

The Fiscal-Administration Division organizes, directs, and supports the daily operations of the Probation Department by overseeing the development and implementation of the annual budget, grant management, contracts administration, payroll, accounts payable/receivable, and training and travel. Members of this division provide experienced and collaborative service to team members and the community we serve while representing our Department with Professionalism, Accountability, and Compassion.



A screenshot of the EDC (Enterprise Data Center) Homepage dashboard. The page title is "El Dorado County, CA - Hub Prod". The dashboard includes a search bar, a navigation menu on the left, and several data cards. The data cards show "Approvals" (0), "Notifications" (0), and "Alerts" (0). Below these are sections for "Tyler Menu" and "Favorites". The "Tyler Menu" includes a search bar and a list of categories: "Munis" (with sub-items: Financials, Human Capital Management, Departmental Functions, EDC Custom Reports, Help). The "Favorites" section is divided into "Recent Activity" and "Financials". "Recent Activity" includes: Invoice Entry, PA Form, Projection Employee Job/Salary, Employee Central, Employee User Defined Fields, Employee Benefits, Employee Inquiry, Payroll Allocations, Workflow Assistant, and Projection Longevity and Experience Report. "Financials" includes: YTD Budget, Purchase Order Receiving, Next Year Budget Reports, Contract Entry, and Contracts Central.

TOTAL OPERATING APPROPRIATIONS \$21,745,498

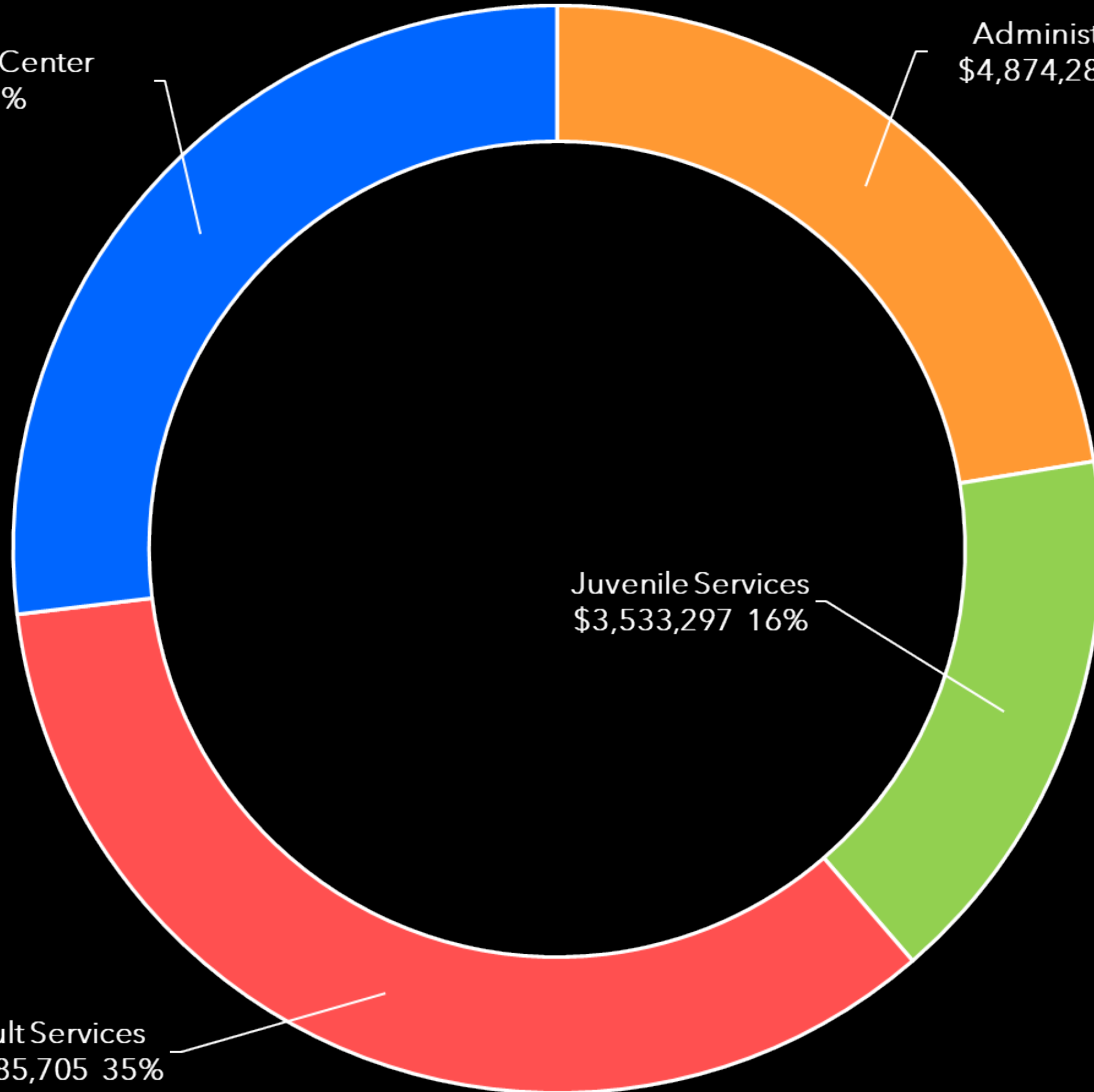
Juvenile Treatment Center
\$5,852,216 27%

Administration
\$4,874,280 22%

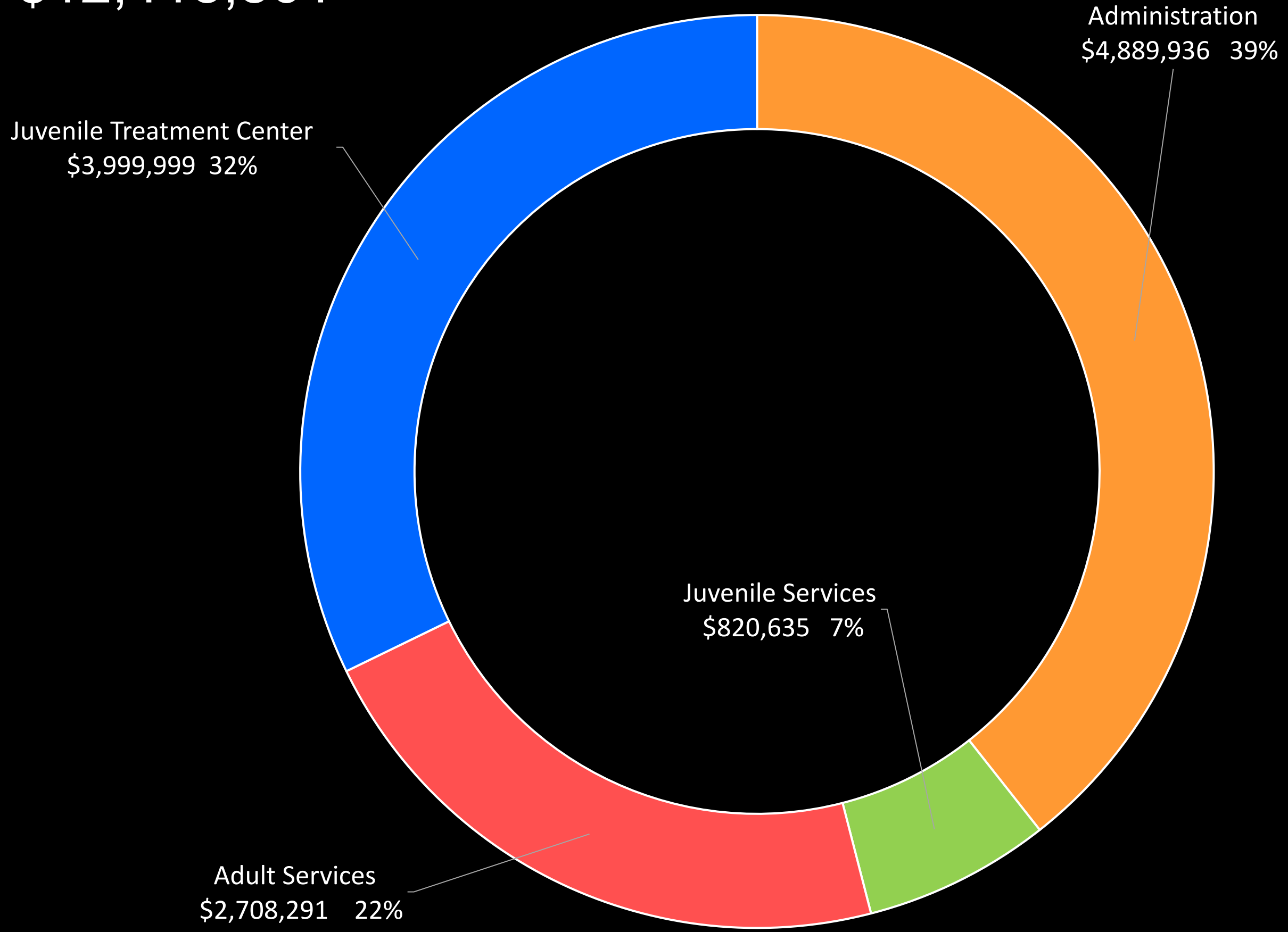
Juvenile Services
\$3,533,297 16%

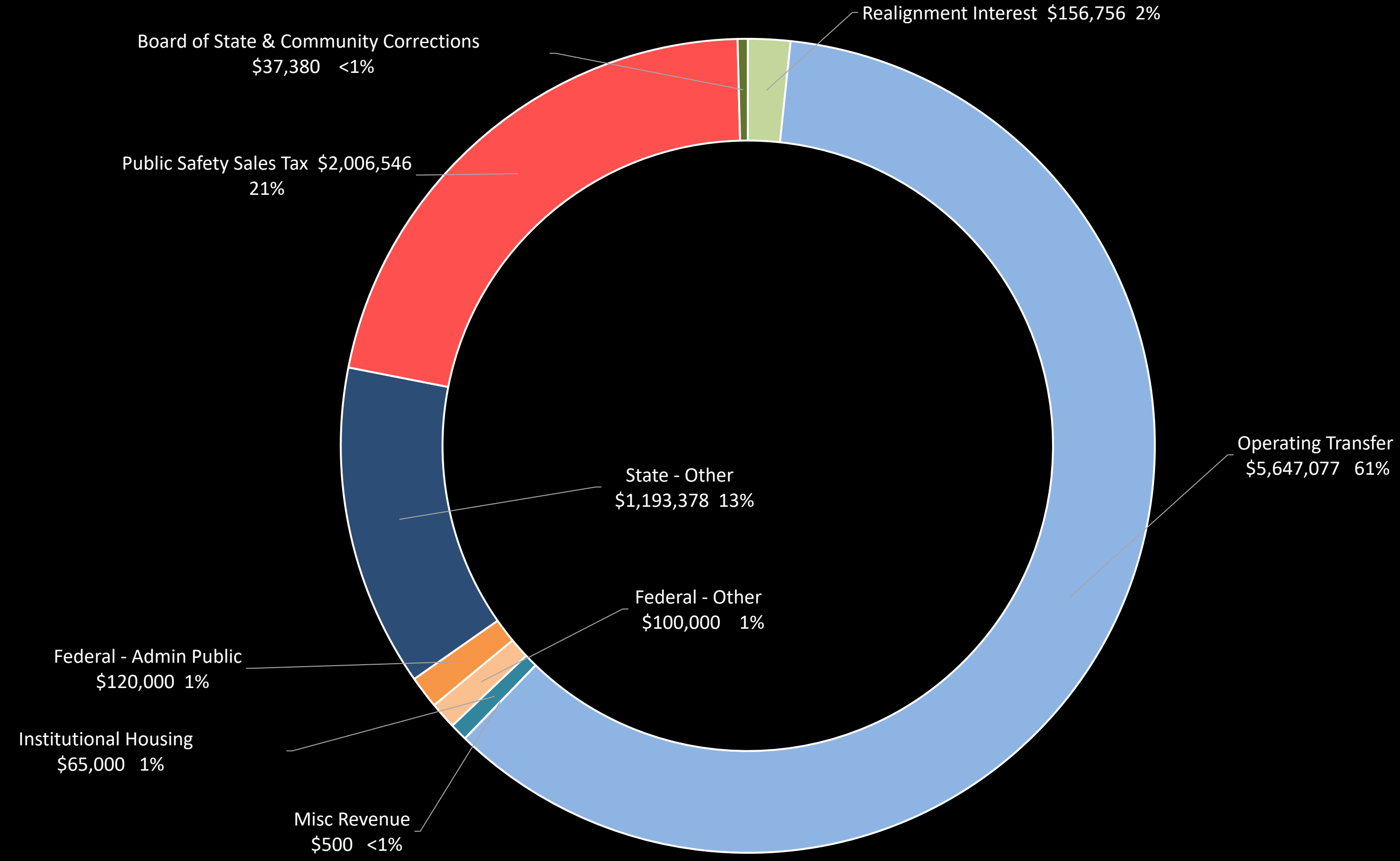
Adult Services
\$7,485,705 35%

BASED ON FY 2022-23 BUDGET



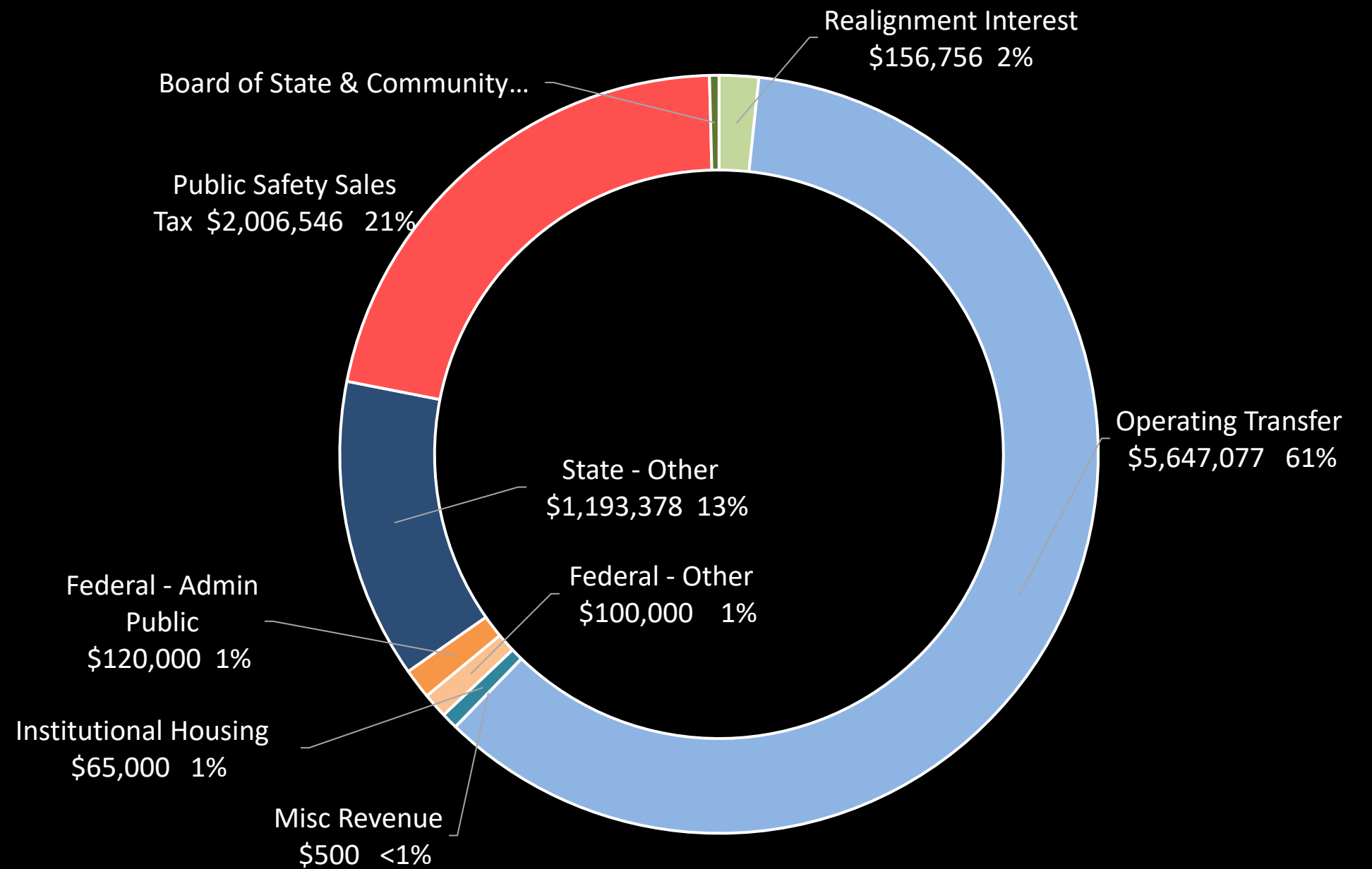
NET COUNTY COST \$12,418,861





REVENUE SOURCES \$9,326,637

- AB 1869 Backfill / AB 143 Allocation
- Community Corrections Performance Incentive Grant SB 678
- Juvenile Justice Crime Prevention Act
- Youthful Offender Block Grant
- AB109 / AB109 Planning & Implementation
- Enhancing Law Enforcement
- Post Release Community Supervision (PRCS)
- Juvenile Reentry
- SB 823 Block Grant

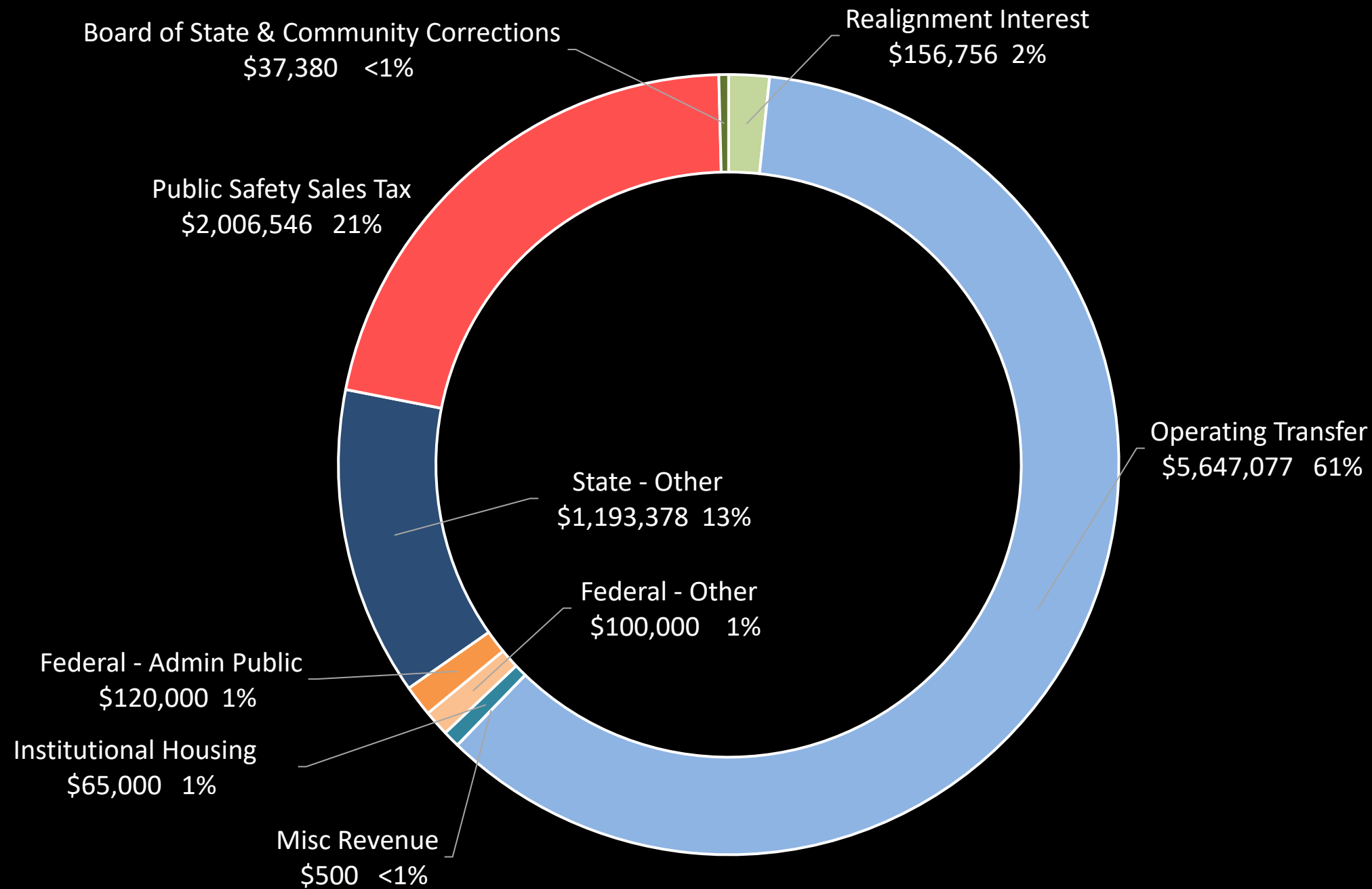


Operating Transfers \$5,647,027 61%

REVENUE SOURCES \$9,326,

BASED ON FY 2022-23 BUDGET

State: Other \$1,193,378 13%



- Title IV-E
- Juvenile Camp Funding
- Juvenile Probation Funding
- Substance Abuse Focus Grant
- Pretrial SB 129
- Behavioral Health Justice Intervention Services (BHJIS) Grant
- Juvenile Reentry – SB 823 Part B

REVENUE SOURCES \$9,326,637

BASED ON FY2022-23 BUDGET

OUR ROLE IN THE STRATEGIC PLAN



CORE VALUES

ACCOUNTABILITY

COLLABORATION

INTEGRITY

SERVICE EXCELLENCE

FISCAL RESPONSIBILITY

STRATEGIC GOALS

ECONOMIC DEVELOPMENT

GOOD GOVERNANCE

HEALTHY COMMUNITIES

INFRASTRUCTURE

PUBLIC SAFETY



UPCOMING POLICY & PROGRAMATIC CHANGES

- Division of Juvenile Justice Realignment & Transition
- PRCS Mitigation Funding & Proposition 57
- Community Assistance, Recovery, & Empowerment (CARE) Act
- CalAIM
- Housing & Homelessness

