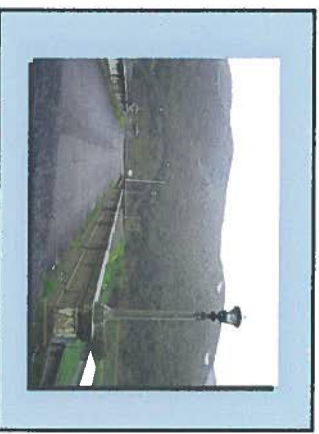
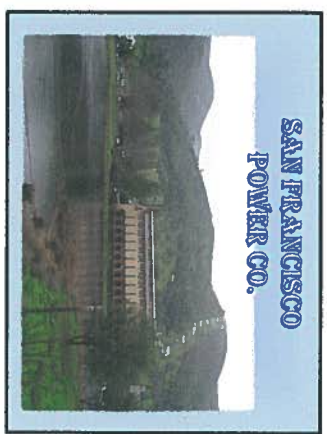
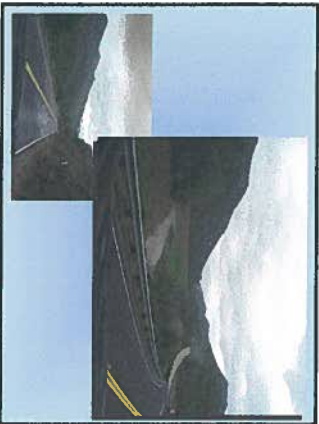
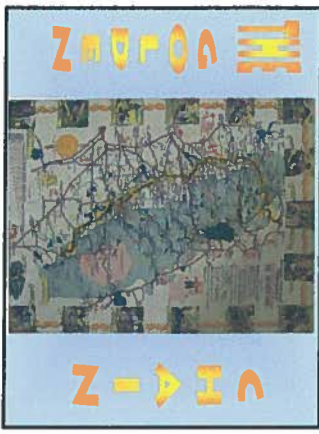
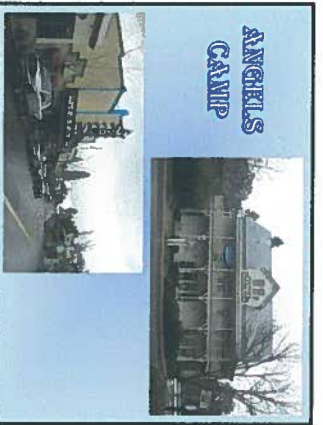
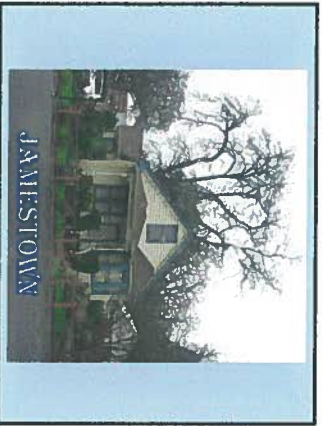
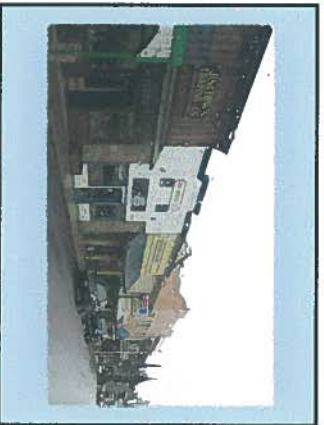
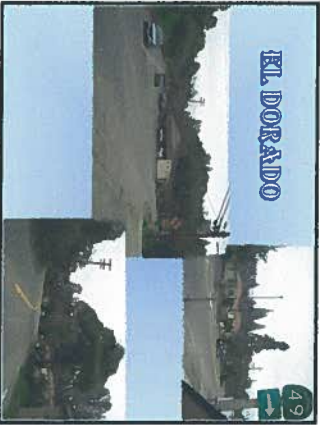
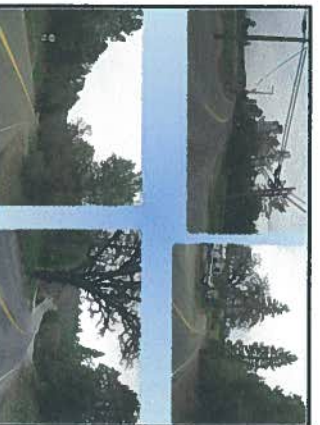


2009 MAY 11 PM 12:37







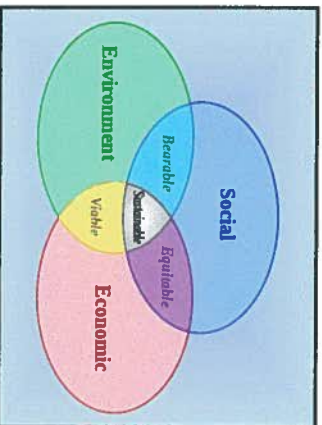
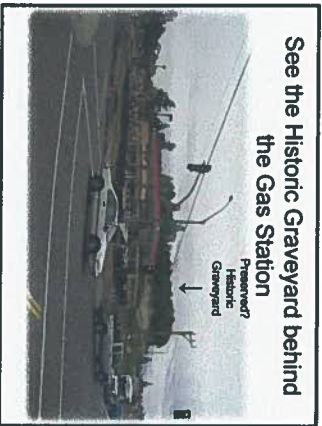


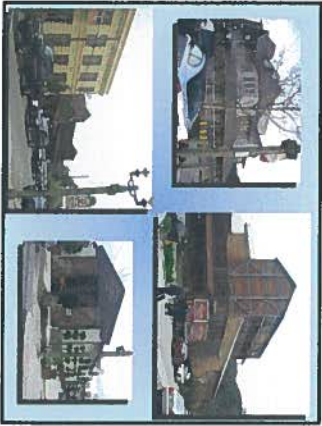
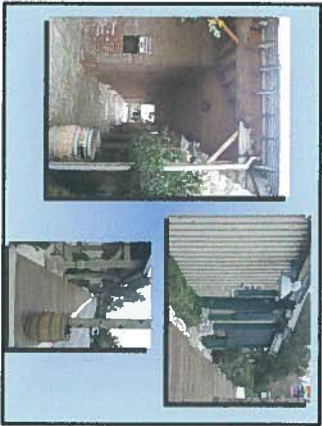
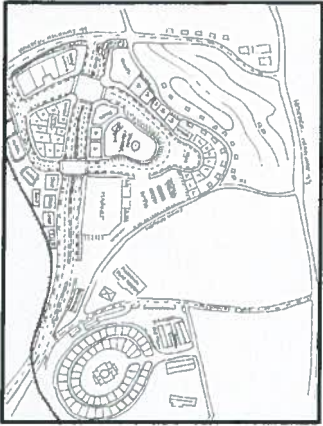
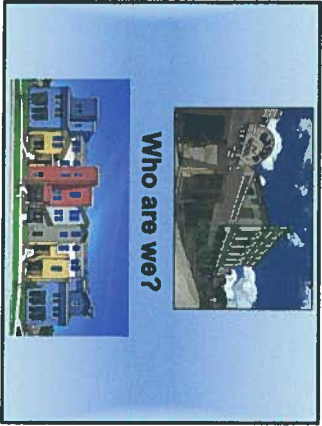
**ECONOMIC  
DEVELOPMENT  
THROUGH  
SUSTAINABILITY**

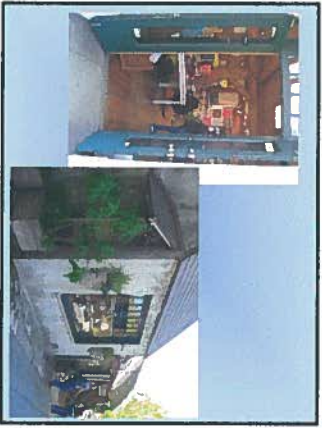


What does El Dorado County  
have to contribute to  
Historic Highway 49?

A widely accepted definition  
of sustainability: "[to meet]  
the needs of the present  
without compromising the  
ability of future generations to  
meet their own needs."

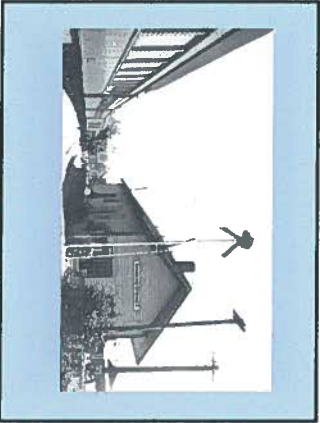








OR



WHAT  
IS THE  
PLAN?