

OWNER/APPLICANT
 STARBUCK ROAD 56, LLC
 2625 SHERIDAN WAY
 SACRAMENTO, CA 95821
 CONTACT: CHUCK CENTERS

MAP PREPARER/ENGINEER
 R.E.Y. ENGINEERS, INC.
 905 SUTTER STREET, SUITE 200
 FOLSOM, CA 95630

MAP SCALE & CONTOUR INTERVAL
 1" = 40'
 CONTOUR INTERVAL = 5'

SOURCE OF TOPOGRAPHY
 RADMAN AERIAL PHOTOGRAPHY

SECTION, TOWNSHIP, & RANGE
 SW 1/4 SECTION 21, T. 10 N., R. 9 E. M.D.M.

ASSESSOR'S PARCEL NUMBERS
 102-110-24, 102-110-14, & 102-421-01

EXISTING/PROPOSED ZONING
 EXISTING: RM-AA-DC
 PROPOSED: RM-AA-DC-PD

TOTAL AREA
 5.6 ACRES +/-

TOTAL NUMBER OF PARCELS
 41- SINGLE-FAMILY RESIDENTIAL UNITS
 (32 ATTACHED, 9 DETACHED)
 1- ROADWAY LOT
 1- LOT A

MINIMUM PARCEL AREA
 2821 SF

WATER SUPPLY & SEWER DISPOSAL
 EL DORADO IRRIGATION DISTRICT

PROPOSED STRUCTURAL FIRE PROTECTION
 CAMERON PARK FIRE DISTRICT

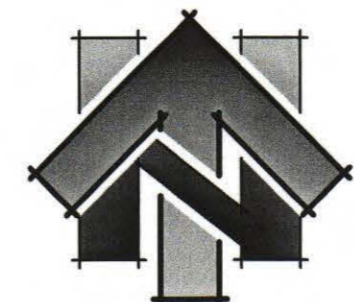
DATE OF PREPARATION
 AUGUST 30, 2017

CAMERON RANCH

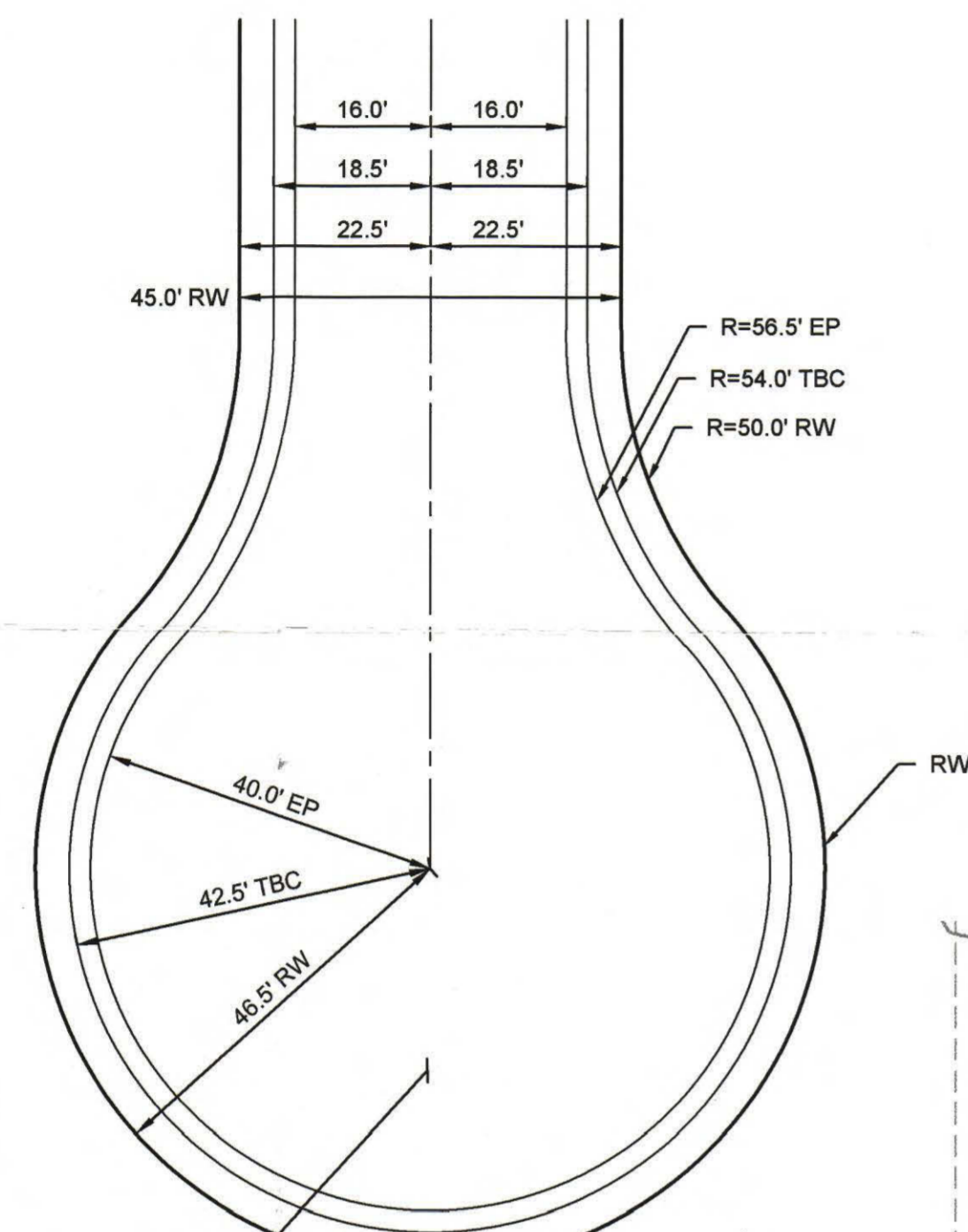
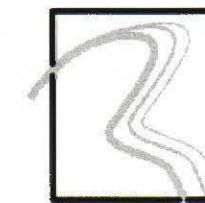
TENTATIVE MAP

EL DORADO COUNTY, CALIFORNIA

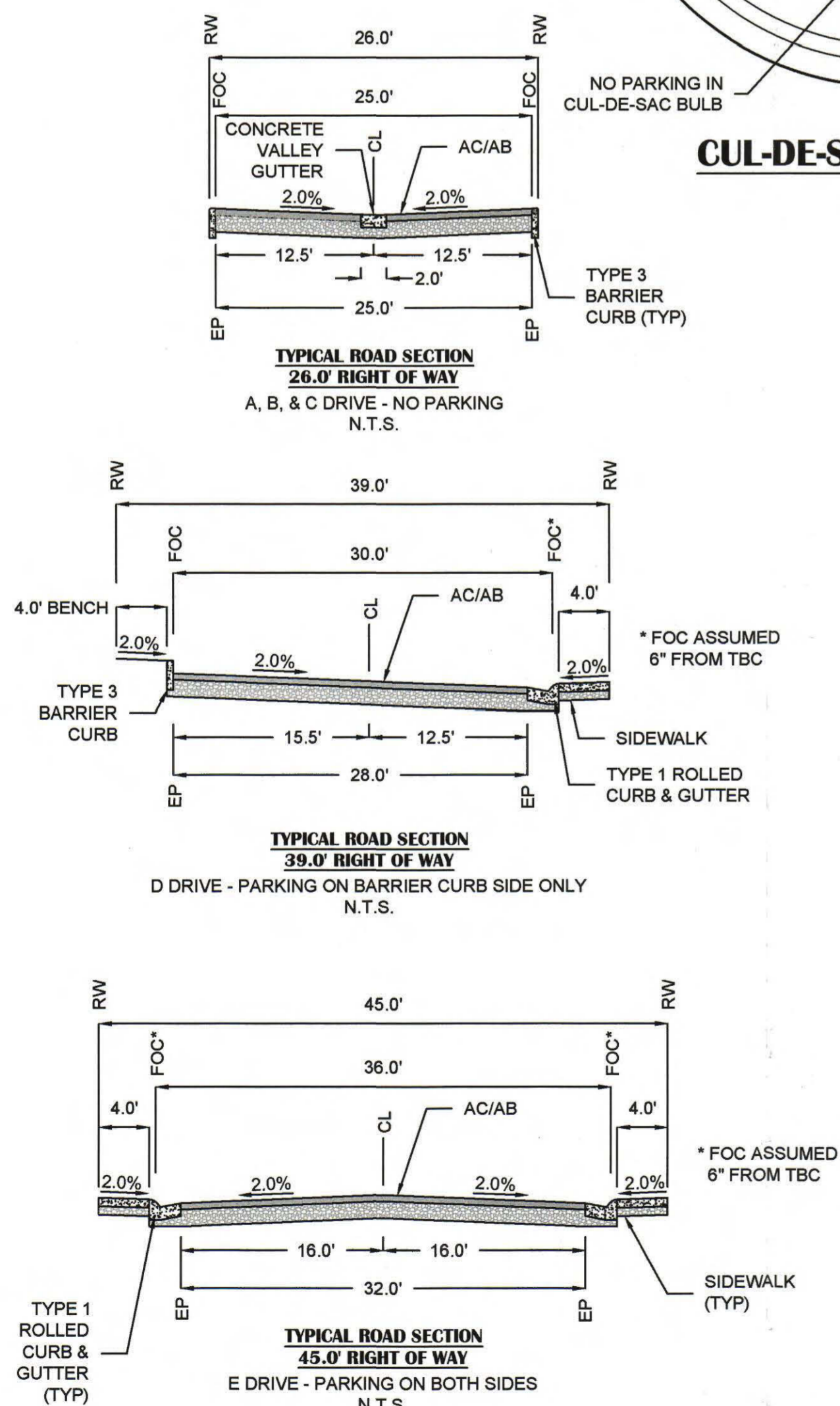
AUGUST 2017



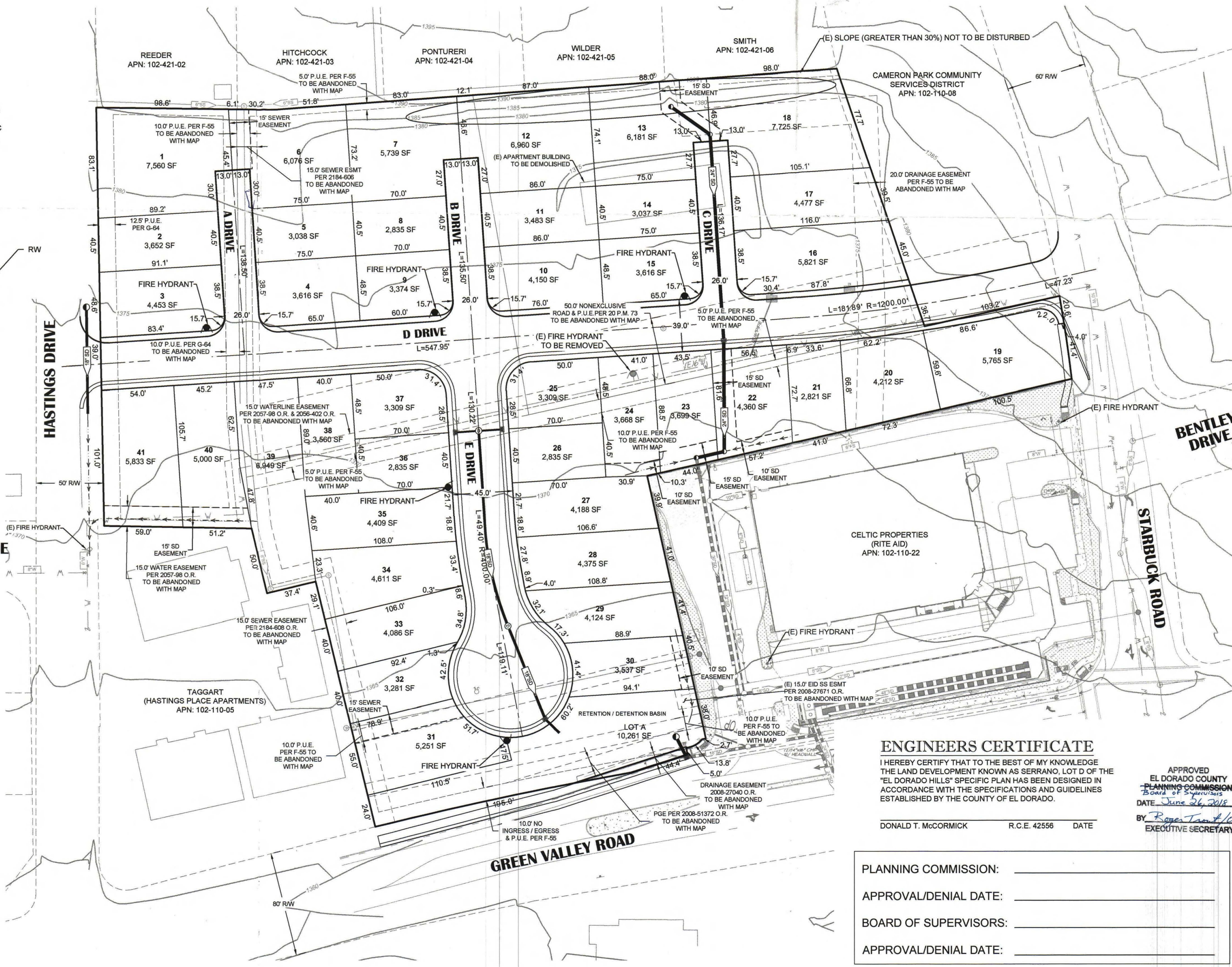
905 Sutter Street, Suite 200, Folsom, CA 95630
 (916) 366-3040 Fax (916) 366-3303
 R.E.Y. ENGINEERS, Inc.
 Civil Engineers / Land Surveyors



ROADWAY SECTIONS



TOURMALINE WAY



ENGINEERS CERTIFICATE

I HEREBY CERTIFY THAT TO THE BEST OF MY KNOWLEDGE THE LAND DEVELOPMENT KNOWN AS SERRANO, LOT D OF THE "EL DORADO HILLS" SPECIFIC PLAN HAS BEEN DESIGNED IN ACCORDANCE WITH THE SPECIFICATIONS AND GUIDELINES ESTABLISHED BY THE COUNTY OF EL DORADO.

DONALD T. MCCORMICK R.C.E. 42556 DATE

APPROVED
 EL DORADO COUNTY
 PLANNING COMMISSION
 Board of Supervisors
 DATE: June 26, 2018
 BY: Roger Tam/Car Executive Secretary

PLANNING COMMISSION: _____
 APPROVAL/DENIAL DATE: _____
 BOARD OF SUPERVISORS: _____
 APPROVAL/DENIAL DATE: _____