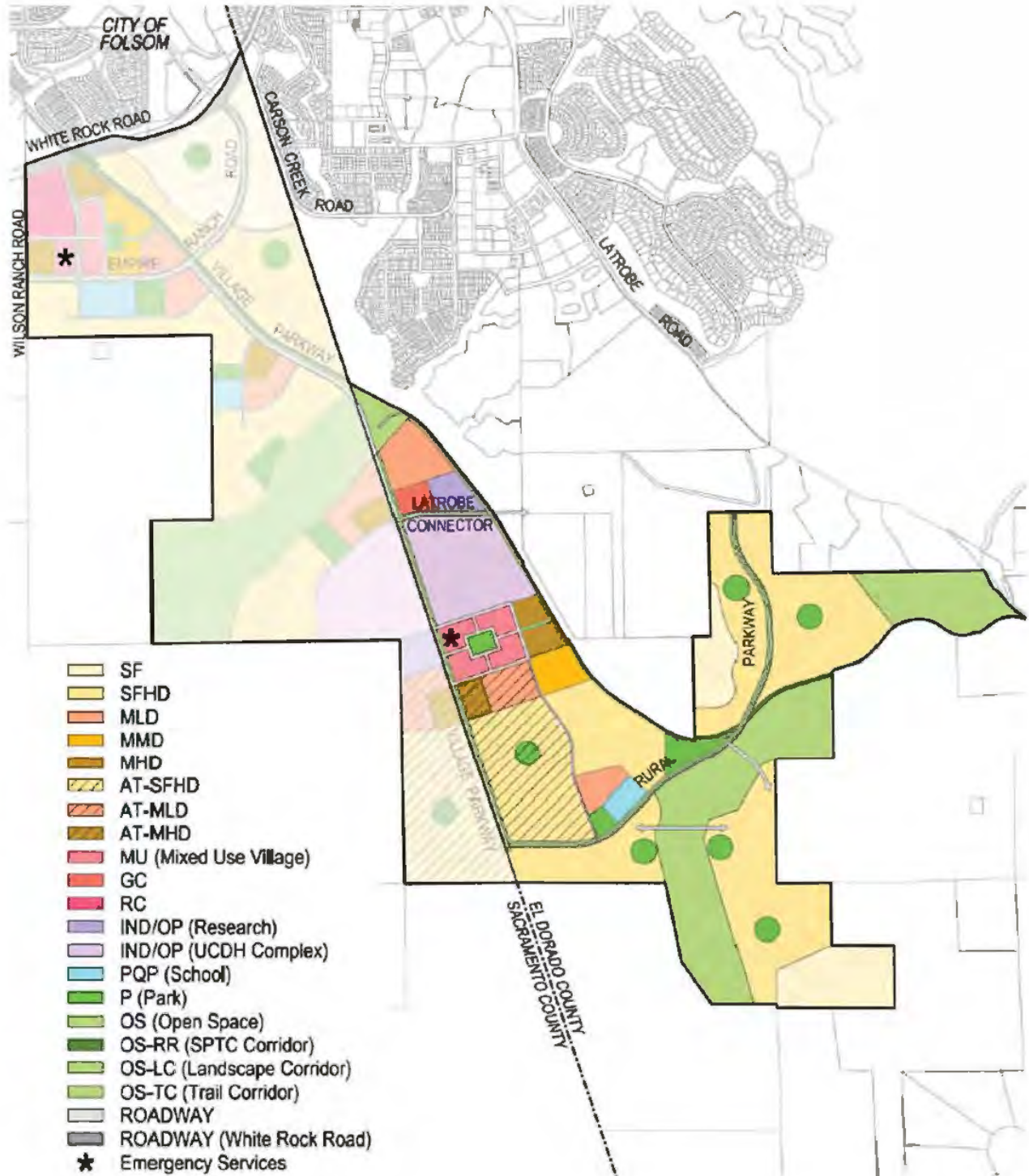
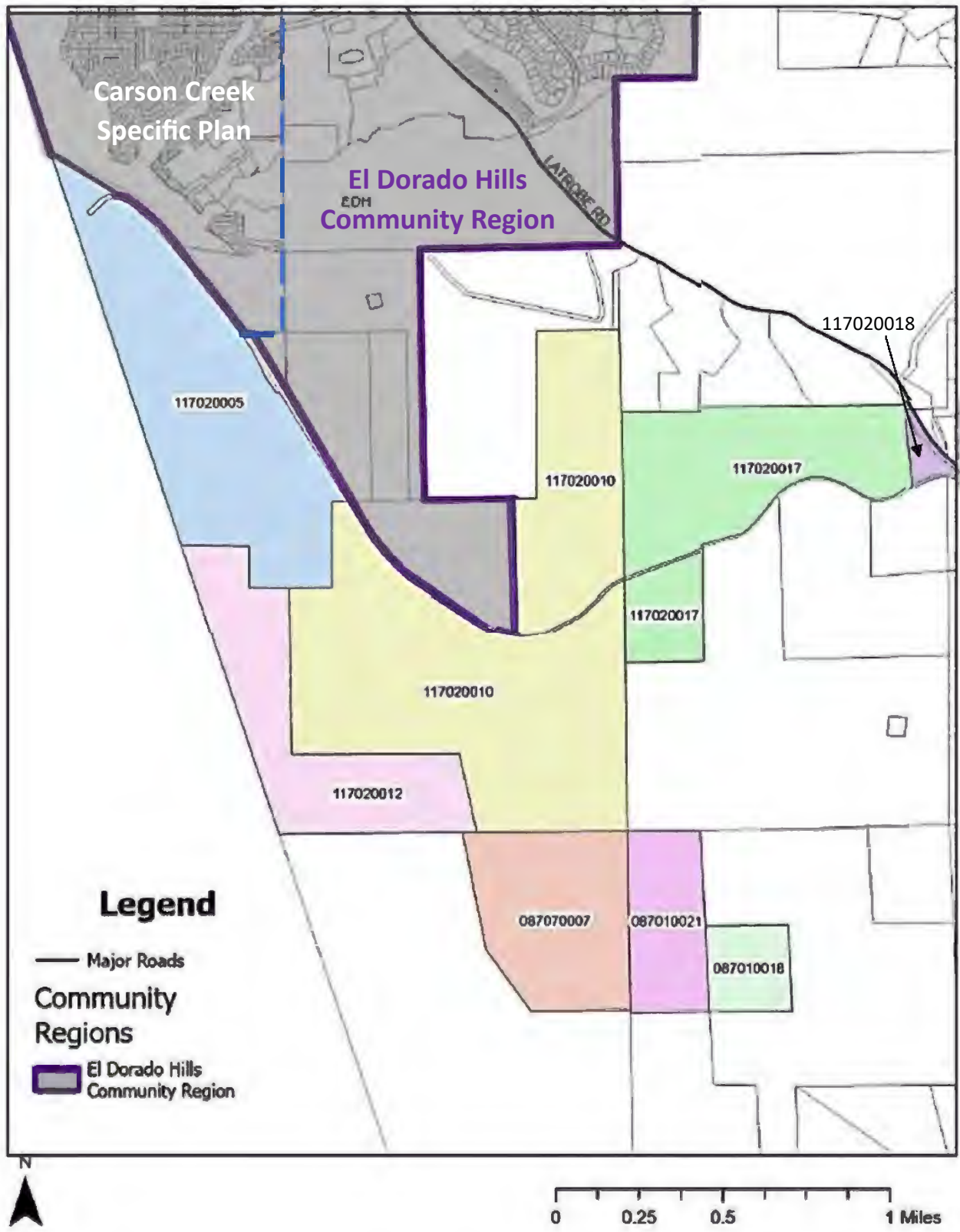


**Community for Health and Independence
East Plan Area
Conceptual Land Use Plan**

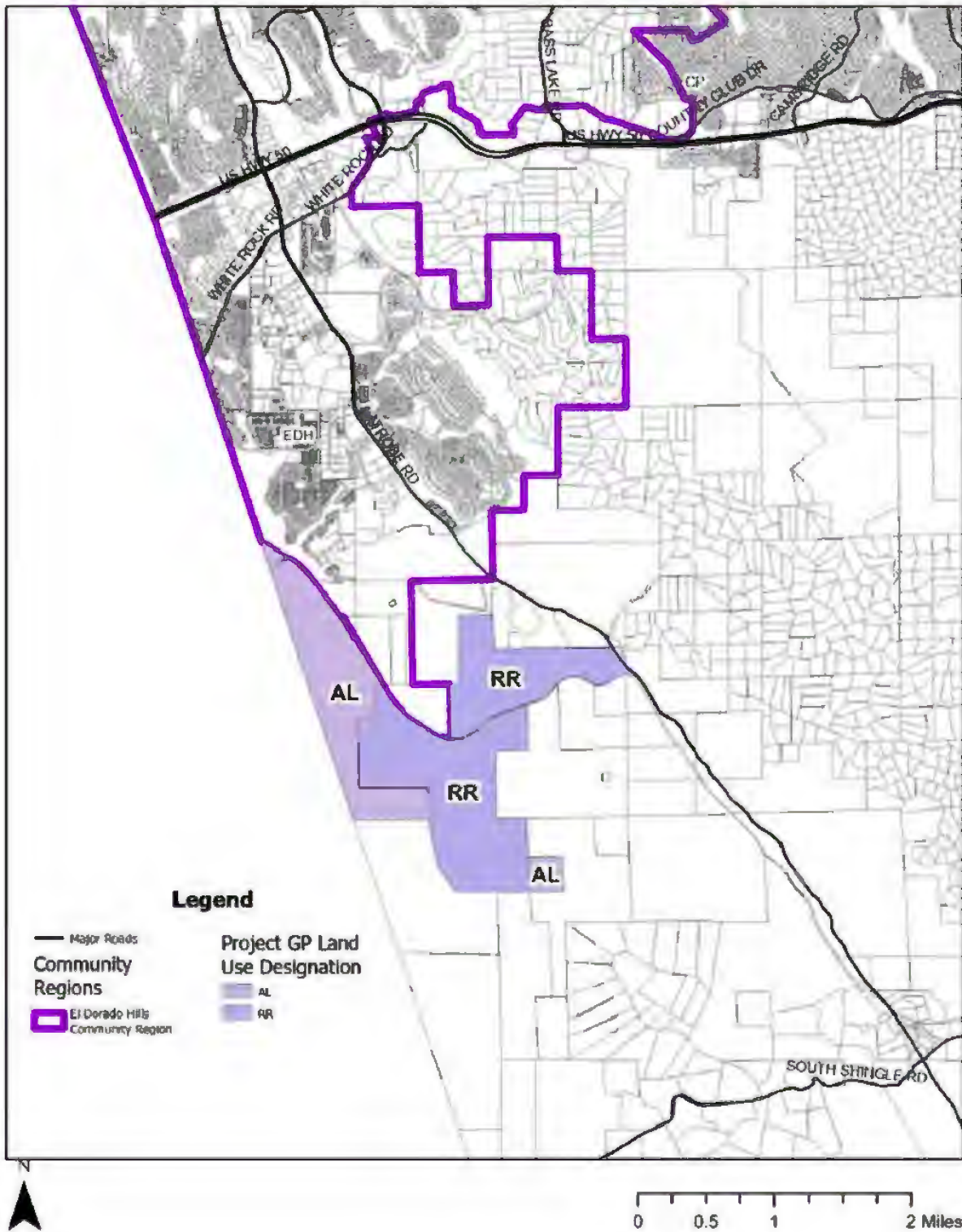


EAST PLAN AREA		
Land Use	Gross Area (Acres)	Dwelling Units
Residential		
SF (1-4du/ac) Single Family	105.3	295
SFHD (4-7du/ac) Single Family High Density	490.2	2157
MLD (7-12du/ac) Multi-Family Low Density	46.8	337
MMD (13-20du/ac) Multi-Family Medium Density	19.3	232
MHD (20-30du/ac) Multi-Family High Density	19.5	311
Subtotal Traditional Residential	681.1	3,332
Age-Targeted Residential		
AT-SFHD (4-7du/ac) Age-Targeted Single Family High Density	119.5	526
AT-MLD (7-12 du/ac) Age-Targeted Multi-Family Low Density	20.0	144
AT-MHD (20-30du/ac) Age-Targeted Multi-Family High Density	10.0	160
Subtotal Age-Targeted Residential	149.5	830
Mixed-Use		
MU (9-30du/ac & 0.5 FAR) Mixed-Use Village (Assumes 25% Residential / 75% Commercial)	32.0	144
Subtotal Mixed-Use	32.0	144
Commercial, Employment & Civic		
GC (0.5 FAR) General Commercial	10.0	
IND/OP Complex (1.0 FAR) Industrial/Office Park UCDH Complex	100.0	
IND/OP Research (0.5 FAR) Industrial/Office Park Research	15.0	
PQP (0.5 FAR) Public/Quasi-Public Public Schools	10.0	
Subtotal Commercial & Employment	135.1	
Parks & Open Space		
P Parks	53.4	
OS Open Space	306.6	
OS-RR Open Spoce Rail Road Parcels	4.5	
OS Open Space Landscape/Trail Corridor	51.4	
Subtotal Parks & Open Space	416.0	
Circulation		
Major Circulation	46.2	
Subtotal Circulation & Misc	46.2	
EAST PLAN AREA TOTAL	1,459.9	4,306
Land Use Designations and Park & Population Generation Factors are based on the El Dorado County General Plan.		

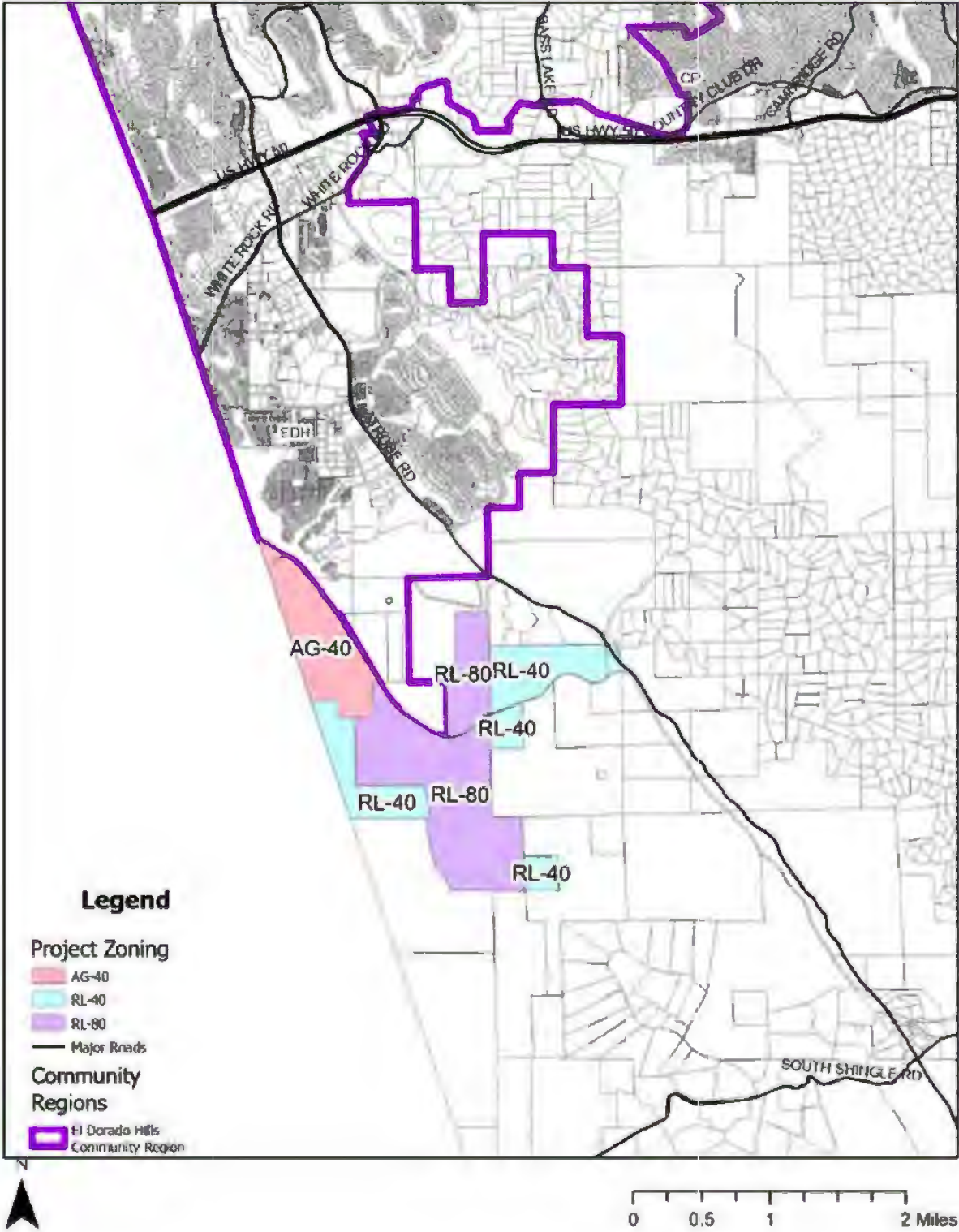
General Plan Designations and Community Region Boundary



General Plan Designations and Community Region Boundary





Zoning Designations and Community Region Boundary

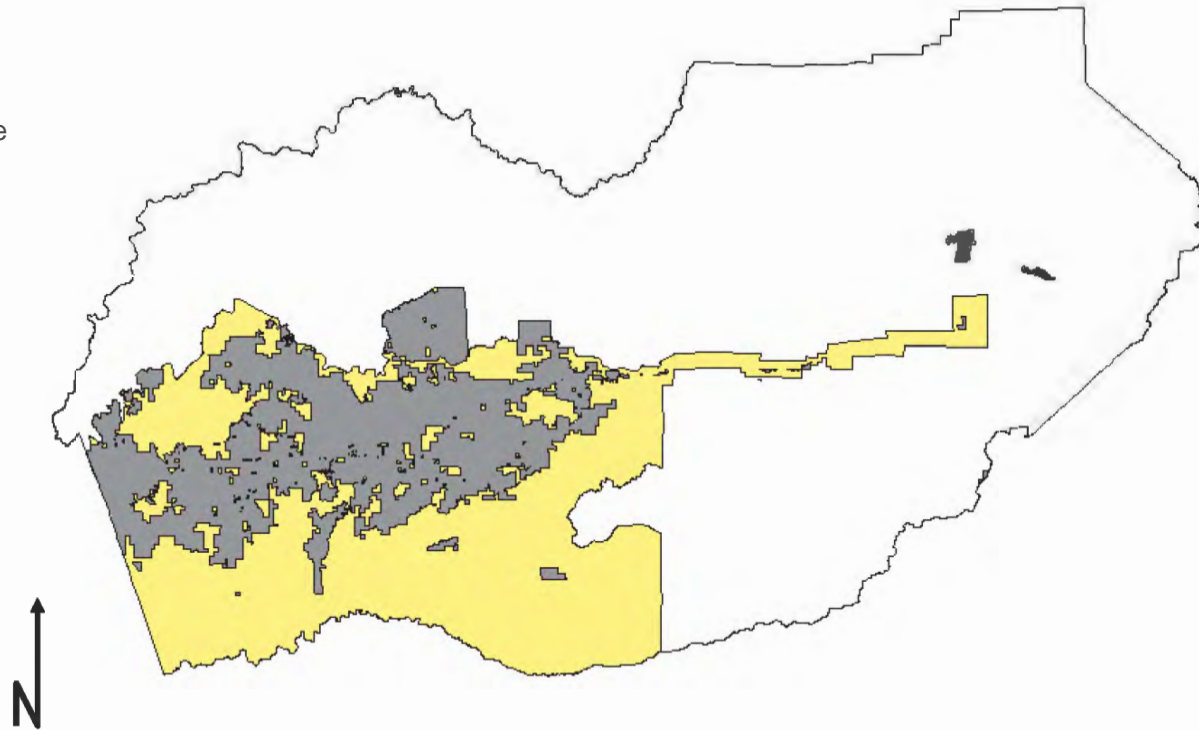


APPROVED

Exhibit F

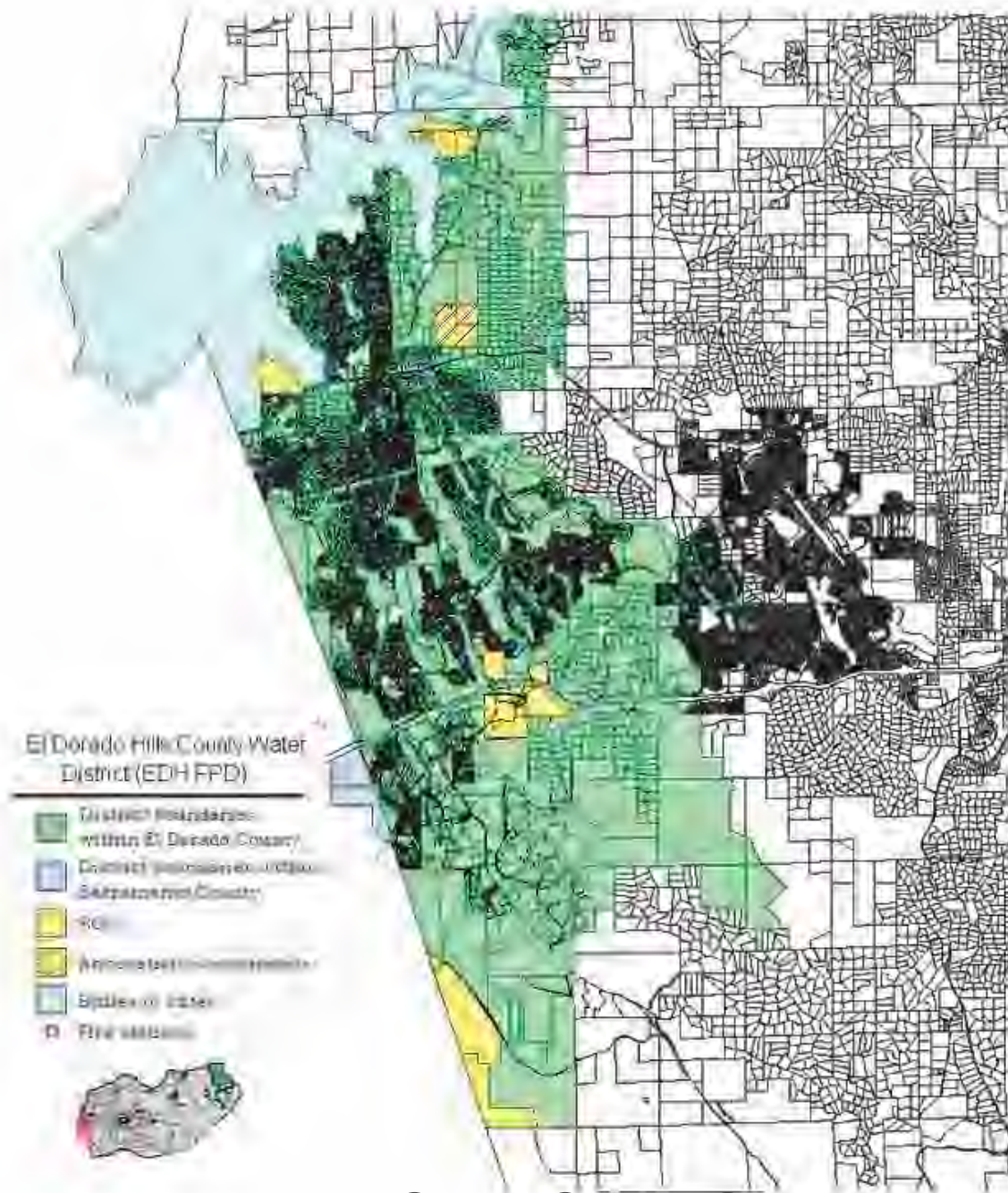
Legend:

-  Service Area
-  Sphere of Influence



EL DORADO IRRIGATION DISTRICT

APPROVED 2011 MAP 1



EL DORADO HILLS COUNTY WATER DISTRICT

APPROVED

