



Community Economic Resilience Fund

County of El Dorado, Board of Supervisors
February 14, 2023

About Valley Vision



Evan Schmidt
CEO



Trish Kelly
Managing Director

Our CERF Team



Alana Ramsay
Project Associate

For 27 years, Valley Vision has served as a trusted nonprofit civic leadership organization in the region, driven by a “triple bottom line” approach of co-equally advancing social equity, economic prosperity, and environmental sustainability, and with a proven record in bringing diverse groups together to develop long-term solutions to the region’s greatest problems. This history of civic leadership and engagement runs across local, regional and statewide platforms, and across sectors and disciplines.

Community Economic Resilience Fund ("CERF")

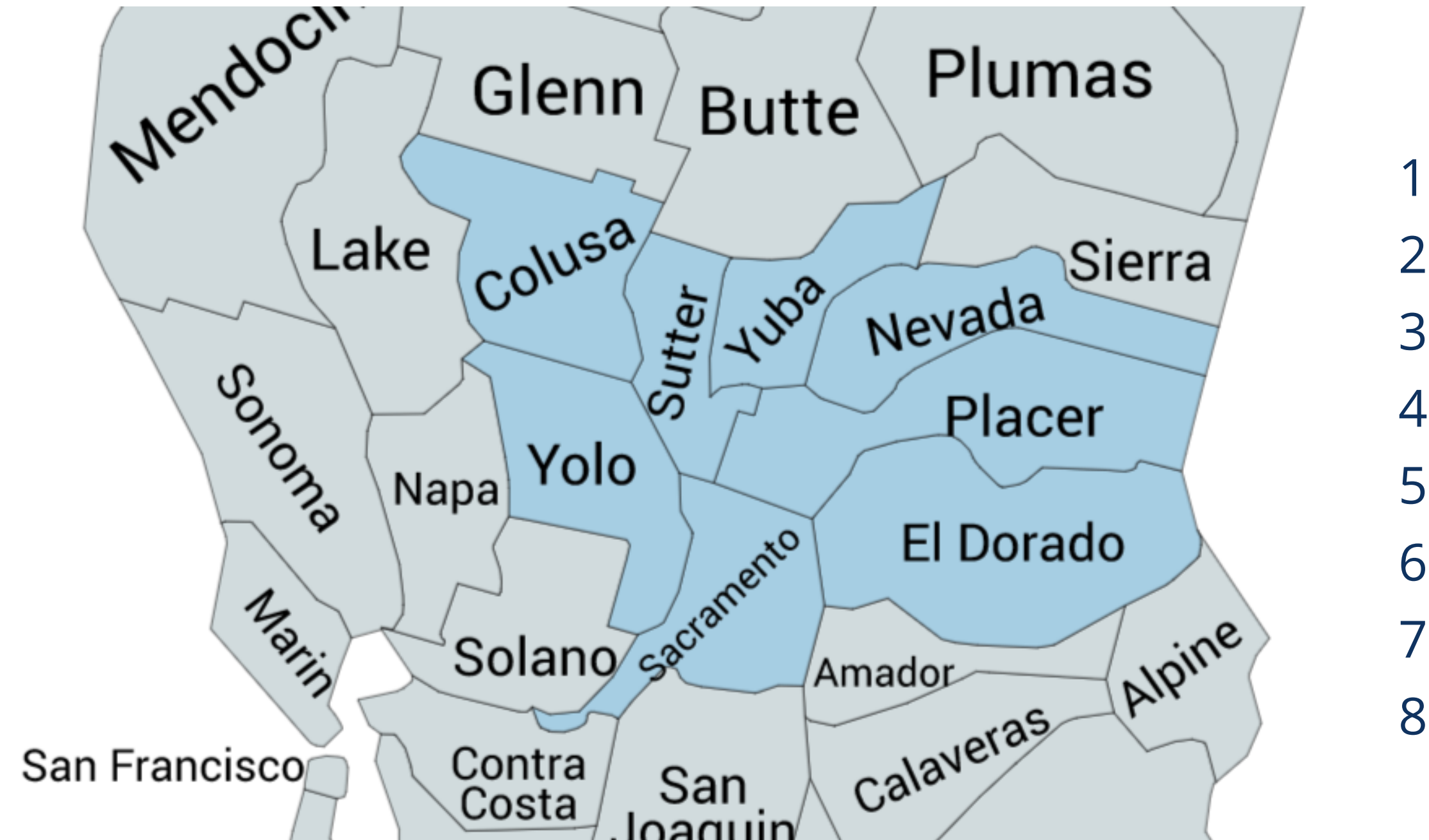
A one-time use of State general funds that will distribute **\$600 million to regions across California** to support **inclusive and low carbon economic development**.

Program Objectives

1. Promote equitable and sustainable economic development
2. Support inclusive economic planning that prioritizes equity, job quality, and sustainability (low-carbon)
3. Align and leverage federal and state funding to maximize economic resilience



Our Sacramento Region



Includes the counties of:

1. Colusa
2. El Dorado
3. Nevada
4. Placer
5. Sacramento
6. Sutter
7. Yolo
8. Yuba

Phases

PLANNING PHASE

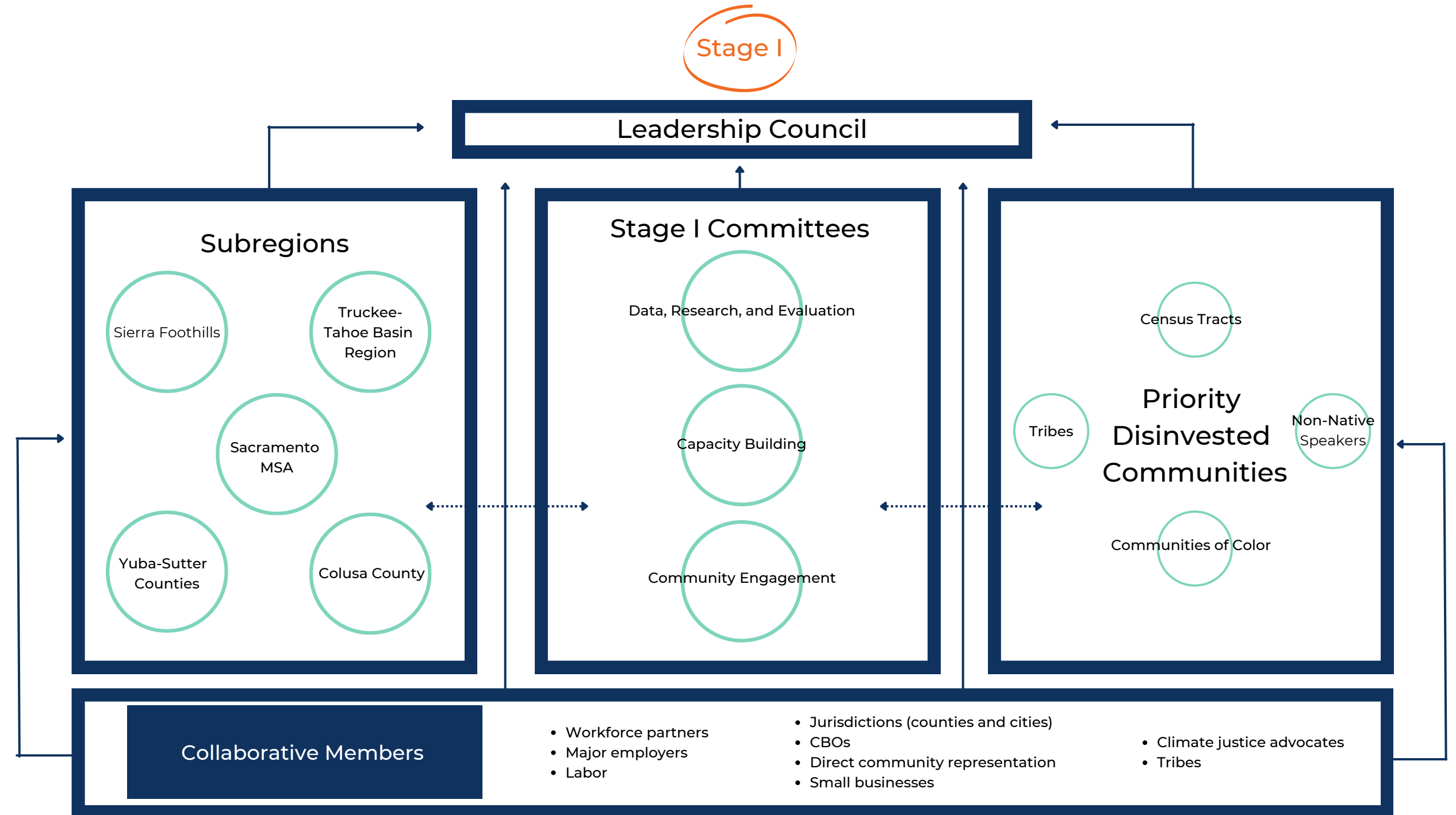
- 13 regions, up to \$5M each
- Regional Collaboratives
- Regional Economic Plans

IMPLEMENTATION PHASE

- Upwards of \$500M total
- Projects that:
 - Demonstrate proposed impacts to disinvested communities
 - Demonstrate community support
 - Promote state climate goals
 - Support labor standards and job quality
 - Demonstrate clear role in regional strategy
 - Complement existing funding sources
 - Supported by the Collaborative

Proposed Governance Structure

Valley Vision is the Regional Convener and Fiscal Agent for our region.



CERF Vision & Impact for Our Region

CERF is a transformative opportunity that allows us to establish a collective vision for our region in a way that includes and uplifts those who are typically left out of these processes. Through CERF we will:

- 1 Provide an opportunity to build a comprehensive regional inclusive economic development vision
- 2 Elevate historical marginalized communities and activate supportive projects
- 3 Create a pipeline for investments to support inclusive economic development projects through CERF and other sources
- 4 Build regional capacity for collaboration and strategies for place-based economic development that go beyond CERF

El Dorado Role & Opportunities

Communicate and seek alignments of El Dorado County's priorities, opportunities, and challenges

Participate in the Collaborative and help grow El Dorado's representation
Primary Contact: Kyle Zimbelman, Economic and Business Relations Manager

Identify and activate high priority projects in El Dorado together

Our Next Steps

Building a strong and cohesive coalition

Continuing outreach

Kick-off in February

Advance key research analysis to inform the plan

Inventory and gap analysis of regional data assets as well as new assets

Economic Development Pilot Projects

Spreading awareness and encouraging eligible projects to apply

CERF Economic Development Pilot Projects Framework

Overview:

- Will fund projects aligned with the values of the CERF program that demonstrate potential uses of CERF implementation funds.
 - Support labor standards where applicable
 - Address geographic equity and access to basic services issues
 - Organize strategies by industry or geography, or both, within or across region
 - Include a range of activities related to economic diversification
 - Coordinate with, advance, and complement state and federal infrastructure investments
 - Align with regional workforce needs by linking directly to high road training partnerships, high road construction careers training programs, or other workforce training
 - Align with state climate goals

CERF Economic Development Pilot Projects Framework (cont'd)

Funding:

- Up to \$50 million, with a maximum of \$10 million allowed for any single award.
- Up to 13 projects will be funded, and geographic equity among regions will be prioritized.

Timeline: SFP will be released in January 2023, application period open for 5 weeks.

Eligibility/Submission Requirements:

- Letter of Support
 - Local or regional government
 - Economic development agency
 - Workforce development agency
 - California Native American Tribe
- Must be presented as part of a plan approved or adopted by a local or regional entity within the past five years

Contact Us



For additional questions or to join our efforts:

cerf@valleyvision.org



To view FAQs and other background info:

https://bit.ly/SacCERF