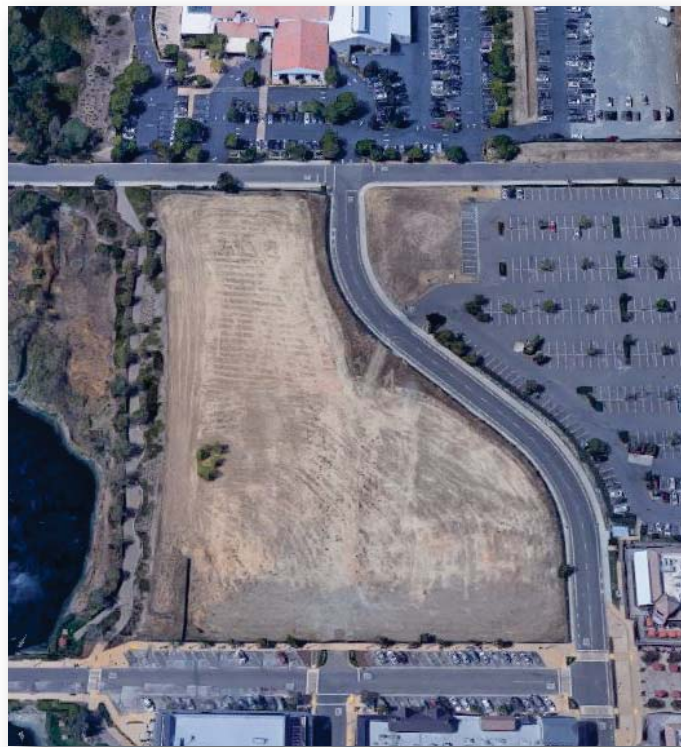


County of El Dorado

El Dorado Hills Apartments Project Draft Environmental Impact Report

SCH No. 2017042017



Prepared by:

**IMPACT
SCIENCES**

505 14th Street, Suite 1230
Oakland, California 94612

Prepared For:

County of El Dorado
Planning and Building Department
2850 Fairlane Court, Building C
Placerville, CA 95667

June 2017

EL DORADO HILLS APARTMENTS PROJECT

Draft Environmental Impact Report

SCH No. 2017042017

Prepared for:

County of El Dorado
Planning and Building Department
2850 Fairlane Court, Building C
Placerville, CA 95667

Prepared by:

Impact Sciences, Inc.
505 14th Street, Suite 1230
Oakland, California 94612
(510) 267-0494

June 2017

TABLE OF CONTENTS

| Section | Page |
|---|--------|
| 1.0 Introduction | 1.0-1 |
| 2.0 Summary | 2.0-1 |
| 3.0 Project Description | 3.0-1 |
| 4.0 Environmental Setting, Impacts, and Mitigation Measures | 4.0-1 |
| 4.1 Air Quality | 4.1-1 |
| 4.2 Biological Resources | 4.2-1 |
| 4.3 Cultural Resources and Tribal Cultural Resources | 4.3-1 |
| 4.4 Greenhouse Gas Emissions | 4.4-1 |
| 4.5 Land Use and Planning | 4.5-1 |
| 4.6 Noise | 4.6-1 |
| 4.7 Public Services and Recreation..... | 4.7-1 |
| 4.8 Transportation and Traffic..... | 4.8-1 |
| 4.9 Utilities and Service Systems | 4.9-1 |
| 4.10 Energy | 4.10-1 |
| 5.0 Alternatives | 5.0-1 |
| 6.0 Other CEQA Considerations | 6.0-1 |
| 7.0 Report Preparation/Agencies Consulted..... | 7.0-1 |

Appendices (on CD attached to the back cover)

| |
|--|
| 1.0 Notice of Preparation, Initial Study, and Scoping Comments |
| 4.1 Air Quality Impact and Greenhouse Gas Analysis |
| 4.2 Biological Resources Assessment |
| 4.3 Archaeological Resources Assessment |
| 4.6 Noise Modeling Data |
| 4.8 Transportation Impact Study |
| 4.9 Water Supply Evaluation |

LIST OF FIGURES

| Figure | Page |
|---|--------|
| 3.0-1 Project Vicinity and Location..... | 3.0-3 |
| 3.0-2 County General Plan Land Use Designation..... | 3.0-4 |
| 3.0-3 EDHSP Village U and Village T Location Map..... | 3.0-5 |
| 3.0-4 EDHSP Village T Planning Area Locations..... | 3.0-6 |
| 3.0-5 Existing and Proposed EDHSP Land Use Designation..... | 3.0-7 |
| 3.0-6 Existing and Proposed Zoning..... | 3.0-8 |
| 3.0-7 Project Site Plan..... | 3.0-11 |
| 3.0-8 Preliminary Landscape Plan..... | 3.0-12 |
| 3.0-9 Project Site Plan – First Level..... | 3.0-15 |
| 3.0-10 Project Site Plan – Second Level..... | 3.0-16 |
| 3.0-11 Project Site Plan –Levels 3 and 4..... | 3.0-17 |
| 3.0-12 Roof Plan..... | 3.0-18 |
| 3.0-13 Illustrative Project Elevations..... | 3.0-19 |
| 3.0-14 Illustrative Project Elevations..... | 3.0-20 |
| 3.0-15 Illustrative Project Elevations..... | 3.0-21 |
| 3.0-16 Town Center Piazza Rendering..... | 3.0-22 |
| 3.0-17 Preliminary Utility Plan..... | 3.0-24 |
| 3.0-18 Preliminary Grading and Drainage Plan..... | 3.0-27 |
| 4.2-1 Aerial Photo..... | 4.2-3 |
| 4.5-1 Surrounding Land Uses..... | 4.5-2 |
| 4.5-2 County of El Dorado General Plan Land Use Designation..... | 4.5-4 |
| 4.5-3 El Dorado Hills Specific Plan Villages T and U..... | 4.5-5 |
| 4.5-4 El Dorado Hills Specific Plan Town Center Plan Planning Area 2..... | 4.5-6 |
| 4.8-1 Project Location and Study Area..... | 4.8-2 |
| 4.8-2 Existing and Planned Bicycle Facilities..... | 4.8-7 |
| 4.8-3 Existing Conditions Peak Hour Intersection Turning Movement Volumes..... | 4.8-11 |
| 4.8-4 Project Trip Distribution..... | 4.8-26 |
| 4.8-5 Project Trip Assignment..... | 4.8-27 |
| 4.8-6 Existing Plus Project Conditions Peak Hour Intersection Turning Movement Volumes..... | 4.8-28 |
| 4.8-7 Peak Hour Traffic Volumes and Lane Configurations – Near-Term No Project..... | 4.8-31 |
| 4.8-8 Peak Hour Traffic Volumes and Lane Configurations – Near-Term Plus Project..... | 4.8-32 |

LIST OF TABLES

| Table | Page |
|--|--------|
| 2.0-1 Summary of Project Impacts and Mitigation Measures | 2.0-7 |
| 2.0-2 Comparison of Alternatives to the Proposed Project | 2.0-29 |
| 3.0-1 Residential Unit Mix Summary | 3.0-9 |
| 4.0-1 Related Projects..... | 4.0-3 |
| 4.1-1 Sources and Health Effects of Air Pollutants..... | 4.1-3 |
| 4.1-2 Ambient Air Quality Standards | 4.1-4 |
| 4.1-3 Highest Measured Air Pollutant Concentrations near the Project Site..... | 4.1-7 |
| 4.1-4 National Ambient Air Quality Standard Designations – MCAB..... | 4.1-9 |
| 4.1-5 California Ambient Air Quality Standard Designations – MCAB | 4.1-10 |
| 4.1-6 Operational Emissions (Unmitigated Maximum Daily lbs/day) | 4.1-24 |
| 4.1-7 Operational Emissions (Mitigated Maximum Daily lbs/day) | 4.1-25 |
| 4.1-8 Operational Emissions – Pollutant Concentration/Significance Determination (CO) | 4.1-26 |
| 4.1-9 Operational Emissions – Pollutant Concentration/Significance Determination (PM10)..... | 4.1-26 |
| 4.1-10 CARB Minimum Separation Recommendations of Siting Sensitive Land Uses..... | 4.1-31 |
| 4.2-1 Special Status Species Reported for Nine Quad Area Surrounding the El Dorado Hills Apartments Project Site | 4.2-7 |
| 4.4-1 AB 32 Scoping Plan Measures (SPMs)..... | 4.4-11 |
| 4.4-2 Greenhouse Gas Emissions Thresholds Efficiency Matrix | 4.4-20 |
| 4.4-3 Estimated Construction GHG Emissions | 4.4-21 |
| 4.4-4 Operational GHG Emissions (2020)..... | 4.4-23 |
| 4.5-1 Proposed Project Land Use Approvals..... | 4.5-12 |
| 4.5-2 General Plan Land Use Element Consistency Analysis | 4.5-14 |
| 4.5-3 General Plan Housing Element Consistency Analysis..... | 4.5-15 |
| 4.5-4 El Dorado Hills Specific Plan Policy Consistency Analysis..... | 4.5-16 |
| 4.5-5 Draft El Dorado Hills TCE Urban Infill Residential Area Design Guidelines and Development Standards Consistency Analysis..... | 4.5-18 |
| 4.6-1 Representative Environmental Noise Levels..... | 4.6-2 |
| 4.6-2 Existing Roadway Modeled Noise Levels | 4.6-7 |
| 4.6-3 Maximum Allowable Noise Exposure for Transportation Noise Sources | 4.6-9 |
| 4.6-4 Noise Level Performance Protection Standards for Noise Sensitive Land Uses Affected by Non-Transportation Sources..... | 4.6-10 |
| 4.6-5 Maximum Allowable Noise Exposure for Non-transportation Noise Sources in Community Regions and Adopted Plan Areas – Construction Noise..... | 4.6-11 |
| 4.6-6 Operational Roadway Noise Levels – Existing Plus Project Conditions | 4.6-15 |
| 4.6-7 HVAC Noise Levels | 4.6-16 |
| 4.6-8 Parking Noise Levels | 4.6-17 |
| 4.6-9 Maximum Noise Levels Generated by Typical Construction Equipment, Lmax..... | 4.6-19 |
| 4.6-10 Construction Noise Levels (Site Preparation) | 4.6-20 |
| 4.6-11 Cumulative Mobile Source Noise Levels | 4.6-22 |
| 4.8-1 Signalized Intersection Level of Service Definitions | 4.8-9 |
| 4.8-2 Unsignalized Intersection Level of Service Definitions | 4.8-10 |
| 4.8-3 Freeway Facility Level of Service Criteria..... | 4.8-12 |
| 4.8-4 Existing Conditions – Study Intersection LOS Summary | 4.8-13 |
| 4.8-5 Existing Conditions – Study Freeway Segments and Ramps LOS Summary..... | 4.8-14 |

LIST OF TABLES (CONT.)

| Table | Page |
|---|---------|
| 4.8-6 Project Trip Generation Rates and Estimates | 4.8-24 |
| 4.8-7 Capacity-Enhancing Roadway Improvements (Construction within 10 years) | 4.8-26 |
| 4.8-8 Existing and Existing Plus Project Intersection LOS Summary | 4.8-34 |
| 4.8-9 Existing and Existing Plus Project Conditions – Study Freeway Segment LOS Summary | 4.8-35 |
| 4.8-10 Intersection LOS and Delay – Near-Term Conditions | 4.8-38 |
| 4.8-11 Freeway Facility Peak Hour Level of Service – Near-Term Conditions | 4.8-39 |
| 4.8-12 Intersection LOS and Delay – Near-Term Plus Project Conditions..... | 4.8-40 |
| 4.8-13 Freeway Facility Peak Hour Level of Service – Near-term Conditions | 4.8-42 |
| 4.8-14 Capacity-Enhancing Roadway Improvements (Anticipated Completion by 2035) | 4.8-44 |
| 4.8-15 Long-Term Cumulative Conditions – Study Intersection LOS Summary | 4.8-48 |
| 4.8-16 Long-Term Cumulative Conditions – Study Freeway Facilities LOS Summary | 4.8-52 |
| 4.9-1 EID Projected Supply | 4.9-2 |
| 4.9-2 EID Recycled Water Supply Reliability, AFY | 4.9-4 |
| 4.9-3 Minimum Levels of Service – Utilities..... | 4.9-9 |
| 4.9-4 Projected Water Demand | 4.9-14 |
| 4.9-5 Projected Potable and Recycled Water Demand | 4.9-15 |
| 4.9-6 Summary of Potable Water Demand versus Supply | 4.9-16 |
| 4.9-7 Summary of Recycled Water Demand versus Supply (During Hydrologic Normal, Single Dry, and Multiple Dry Years for EID, AFY) | 4.9-17 |
| 4.10-1 Project Operational Natural Gas and Electricity Usage (Unmitigated Scenario) | 4.10-9 |
| 4.10-2 Project Operational Natural Gas and Electricity Usage (Mitigated Scenario) | 4.10-9 |
| 4.10-3 On-road Mobile Fuel Generated by Project Construction Activities – By Phase..... | 4.10-11 |
| 5.0-1 No Project/Existing Zoning Alternative Trip Generation..... | 5.0-10 |
| 5.0-2 Reduced Density Alternative Trip Generation..... | 5.0-16 |
| 5.0-3 Summary Comparison of Project Alternatives..... | 5.0-21 |