



Pioneer Community Energy and El Dorado County

February 1, 2022



When you joined Pioneer.....



Energy Future

1

El Dorado County took control of its energy future

Choice

2

For the first time, you gave your residents a choice on their energy provider

Programs

3

El Dorado County took control of what energy programs will be serving the county

Savings

4

El Dorado County residents will save an estimated \$6.7 million in 2022 on their utility bills

ROI

5

All this happened without any cost to the County

- **Mission**

- Pioneer Community Energy is a locally owned provider of electricity – powering the communities we serve with competitive rates, reliable service, and a choice in energy options

- **Vision**

- A community partner in reliable energy solutions and positive local impact, powering today, and empowering tomorrow

What Happened January 1?

- Three Things Stay the Same but One Big Change Happened



Before January 1

On January 1

PG&E purchases power

Pioneer purchases power

PG&E maintains transmission lines

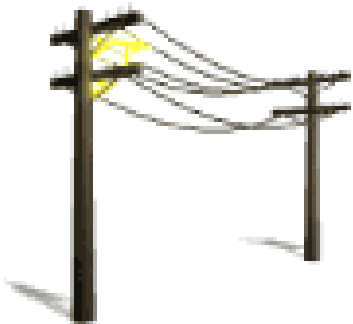
PG&E maintains transmission lines

PG&E provides customer service

PG&E/Pioneer provides customer service

PG&E bills the customer

PG&E bills the customer on behalf of Pioneer



PG&E vs. Pioneer – Rates



- PG&E has announced ‘significant’ rate increases
 - T&D rate increases are 12.6% effective Jan 2022
 - Generation rate increases effective Mar 2022
- PCIA modification to be effective Mar 2022
- Pioneer’s board recently approved a rate adjustment
 - Effective Mar 2022
 - Most Pioneer customers will realize a discount (savings) of at least 6% from PG&E’s generation rate

PG&E vs. Pioneer – Jan/Feb 2022

E-1 Residential (Based on 500 kWh/month usage)	Pioneer (Standard)	Pioneer (Green100)	PG&E (Bundled)
Generation Rate (\$/kWh)	\$0.07719	\$0.07719	\$0.11418
Green100 Rate (\$/kWh)	N/A	\$0.01088	N/A
*PG&E Delivery Rate (\$/kWh)	\$0.17209	\$0.17209	\$0.17209
PG&E Surcharges (\$/kWh)	\$0.02887	\$0.02887	N/A
Total Electricity Cost (\$/kWh)	\$0.27815	\$0.28903	\$0.28627
Average Monthly Bill (\$)	\$139.08	\$144.52	\$143.14

- These numbers are for a typical El Dorado County residential customer (E1 rate)
- The savings with Pioneer’s Generation rate + PCIA vs. PG&E’s Generation rate is nearly 7%
- El Dorado County falls under the 2021 PCIA Vintage

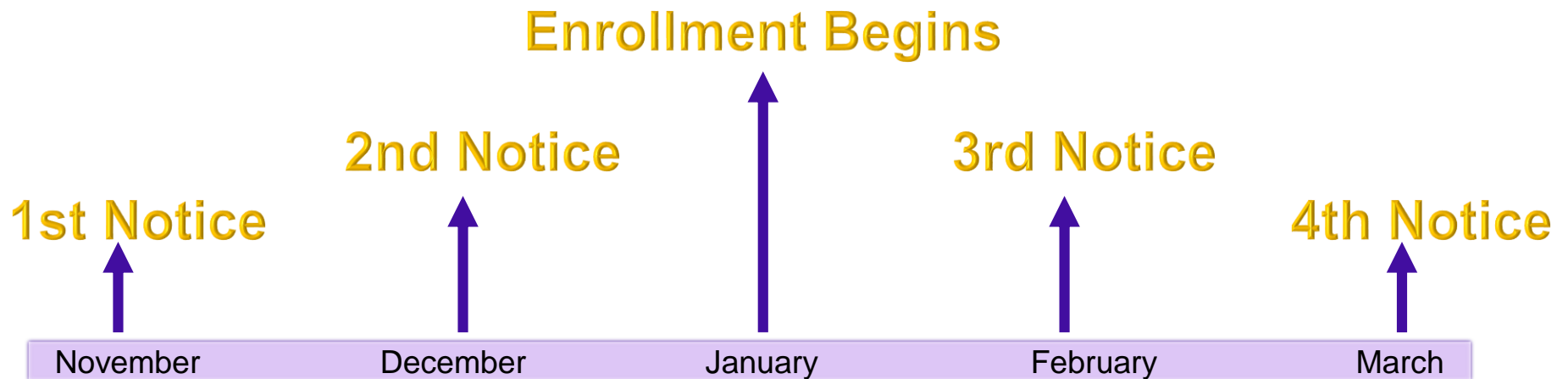
PG&E vs. Pioneer – March 2022



E-1 Residential (Based on 500 kWh/month usage)	Pioneer (Standard)	Pioneer (Green100)	PG&E (Bundled)
Generation Rate (\$/kWh)	\$0.11402	\$0.11402	\$0.15558
Green100 Rate (\$/kWh)	N/A	\$0.01088	N/A
*PG&E Delivery Rate (\$/kWh)	\$0.17209	\$0.17209	\$0.17209
PG&E Surcharges (\$/kWh)	\$0.03182	\$0.03182	N/A
Total Electricity Cost (\$/kWh)	\$0.31793	\$0.32881	\$0.32767
Average Monthly Bill (\$)	\$158.97	\$164.41	\$163.84

- The savings with Pioneer’s Generation rate + PCIA vs. PG&E’s Generation rate is greater than 6%
- Based on historical load, El Dorado County residents and businesses will save \$6.7 million in 2022 vs. staying with PG&E
- Actual rates expected to be released in late February

Enrollment Timeline



Solar (Net Energy Metering) customers enroll close to their true up month

True Up Month	Jan/Feb	March/April	May/June	July/Aug	Sept/Oct	Nov/Dec
1 st Notice	November	January	March	May	July	September
Enrollment Month	January	March	May	July	September	November

Special Note: Solar customers can enroll before their true-up date by calling Pioneer.

Why Auto Enrollment?



- The legislature determined that all customers would be enrolled in a CCA upon launch
 - This process ensures fair and equitable treatment of all customers
 - Energy providers must plan for energy purchases to ensure the lowest costs
- Customers can choose to stay with Pioneer or return to PG&E
- Solar customers auto enroll on their true-up date

Opt Outs

- Pioneer customers can opt out at any time
- Opt out customers do not pay a fee to Pioneer
- Solar customers can opt out no earlier than 60 days of true-up date
- Post March 2022 Opt Outs – Returning to PG&E
 - Immediate 6-month ‘Transitional’ rate and then 6-month standard rate for a 12-month commitment w/PG&E
 - 6-month waiting period w/Pioneer and then a 12-month standard rate commitment w/PG&E

- Over 30,000 solar customers have joined Pioneer
- Individualized bill analysis has shown solar customers save with Pioneer
- Pioneer pays 1/2 cent more than PG&E for excess kWh
- Pioneer true-up is monthly vs. PG&E annually
- Pioneer assists customers to understand energy consumption and billing questions

Outreach & Awareness



- Over 3,000 Customer Calls & Emails
- 40 Community Presentations & Key External Stakeholder Engagement
- 48 Social Media Posts with 570 Followers
- 28 Earned media stories
 - 2,900,000 Viewers
- 40,000 newspaper inserts

Advocacy in Action

- PSPS – Advocated at CPUC & CCAs
- EPSS (Fast Trips) – Raised issue to CPUC & CCAs
- AB 843 – Sponsored biomass funding bill
- Local Spending – First option is local vendors
- River Fire – Waived up to \$50,000 in bills

Pioneer is your long-term choice



- Strong balance sheet and financially stable
- Projected to reach reserve targets of 160 days of cash liquidity by FY 2024
- Signed \$82.5 million in long-term contracts with power suppliers in 2021
- Discussions beginning in 2022 to obtain a credit rating

Contact Us



(916) 758-8969 Office

CustomerService@PioneerCommunityEnergy.ca.gov

<http://PioneerCommunityEnergy.ca.gov>

Facebook: Pioneer Community Energy