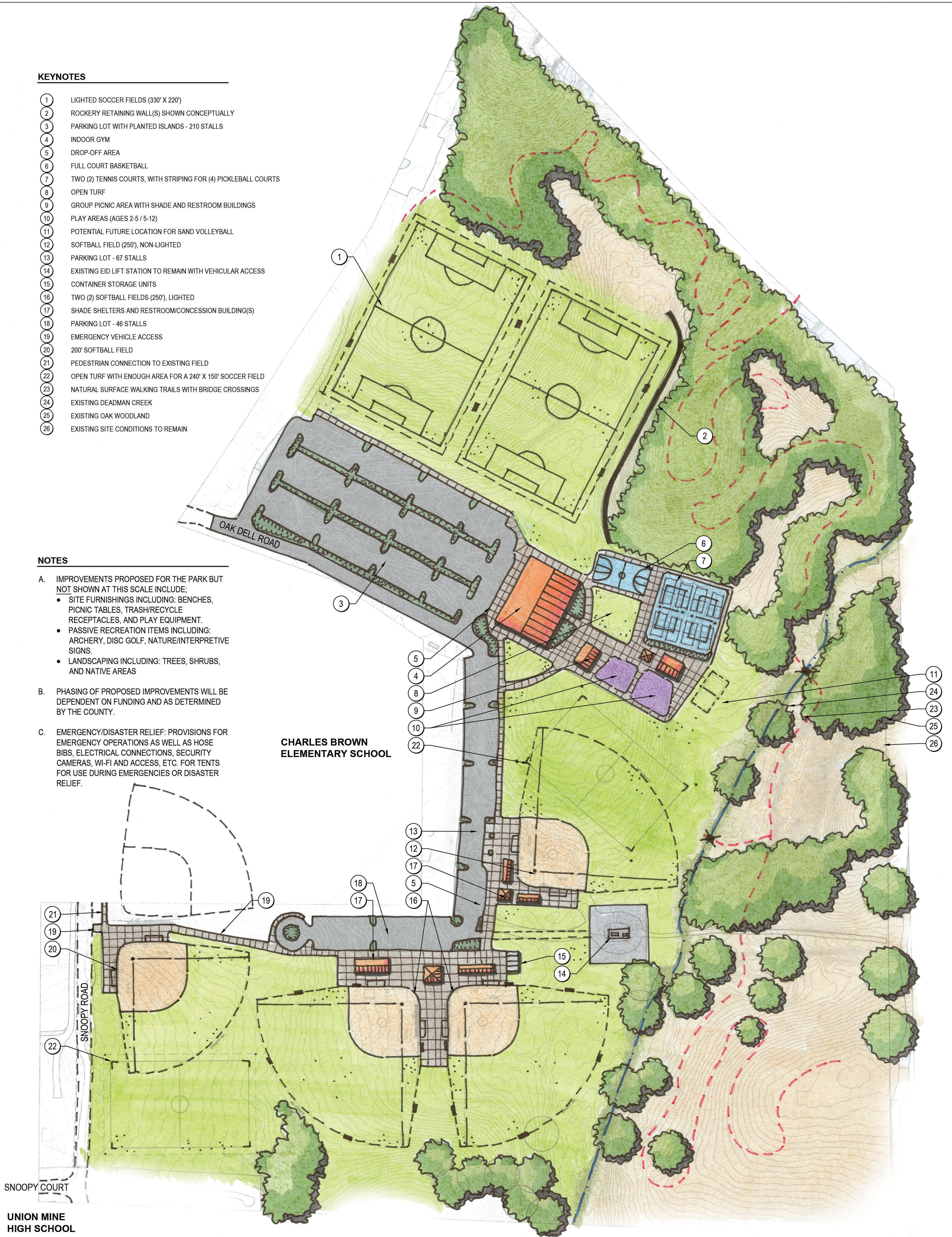


KEYNOTES

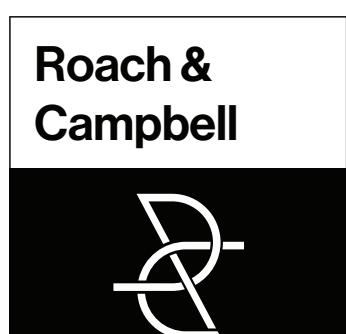
- ① LIGHTED SOCCER FIELDS (330' X 220')
- ② ROCKERY RETAINING WALL(S) SHOWN CONCEPTUALLY
- ③ PARKING LOT WITH PLANTED ISLANDS - 210 STALLS
- ④ INDOOR GYM
- ⑤ DROP-OFF AREA
- ⑥ FULL COURT BASKETBALL
- ⑦ TWO (2) TENNIS COURTS, WITH STRIPING FOR (4) PICKLEBALL COURTS
- ⑧ OPEN TURF
- ⑨ GROUP PICNIC AREA WITH SHADE AND RESTROOM BUILDINGS
- ⑩ PLAY AREAS (AGES 2-5 / 5-12)
- ⑪ POTENTIAL FUTURE LOCATION FOR SAND VOLLEYBALL
- ⑫ SOFTBALL FIELD (250'), NON-LIGHTED
- ⑬ PARKING LOT - 67 STALLS
- ⑭ EXISTING EID LIFT STATION TO REMAIN WITH VEHICULAR ACCESS
- ⑮ CONTAINER STORAGE UNITS
- ⑯ TWO (2) SOFTBALL FIELDS (250'), LIGHTED
- ⑰ SHADE SHELTERS AND RESTROOM/CONCESSION BUILDING(S)
- ⑱ PARKING LOT - 46 STALLS
- ⑲ EMERGENCY VEHICLE ACCESS
- ⑳ 200' SOFTBALL FIELD
- ㉑ PEDESTRIAN CONNECTION TO EXISTING FIELD
- ㉒ OPEN TURF WITH ENOUGH AREA FOR A 240' X 150' SOCCER FIELD
- ㉓ NATURAL SURFACE WALKING TRAILS WITH BRIDGE CROSSINGS
- ㉔ EXISTING DEADMAN CREEK
- ㉕ EXISTING OAK WOODLAND
- ㉖ EXISTING SITE CONDITIONS TO REMAIN

NOTES

- A. IMPROVEMENTS PROPOSED FOR THE PARK BUT NOT SHOWN AT THIS SCALE INCLUDE:
 - SITE FURNISHINGS INCLUDING: BENCHES, PICNIC TABLES, TRASH/RECYCLE RECEPTACLES, AND PLAY EQUIPMENT.
 - PASSIVE RECREATION ITEMS INCLUDING: ARCHERY, DISC GOLF, NATURE/INTERPRETIVE SIGNS.
 - LANDSCAPING INCLUDING: TREES, SHRUBS, AND NATIVE AREAS
- B. PHASING OF PROPOSED IMPROVEMENTS WILL BE DEPENDENT ON FUNDING AND AS DETERMINED BY THE COUNTY.
- C. EMERGENCY/DISASTER RELIEF: PROVISIONS FOR EMERGENCY OPERATIONS AS WELL AS HOSE BIBS, ELECTRICAL CONNECTIONS, SECURITY CAMERAS, WI-FI AND ACCESS, ETC. FOR TENTS FOR USE DURING EMERGENCIES OR DISASTER RELIEF.



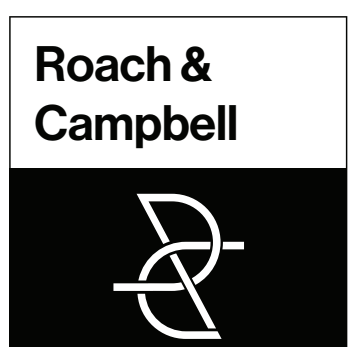
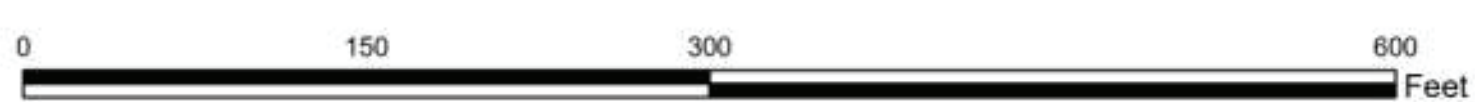
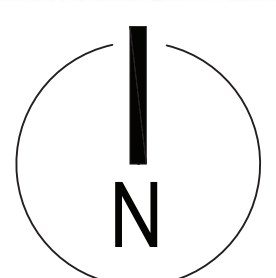
This concept is diagrammatic and preliminary, used to illustrate options for major programming only. A preferred park master plan based on community input, needs, and additional survey data will be developed. Other amenities not represented at this scale include walking trails, educational and interpretive signage, archery and disc golf courses, recycling and trash receptacles, benches, planting, additional shade trees, etc.



August 2022
El Dorado County, California

Diamond Springs Community Park

Draft Preferred Conceptual Master Plan



August 2022
El Dorado County, California

Diamond Springs Community Park

Aerial Site Plan