

Pollock Pines Fire Safe Project

Pollock Pines Park

Record Of Survey

NOTE:

THE PURPOSE OF THIS SURVEY IS TO DELINEATE THE PROPERTY DESCRIBED IN BOOK NO. 01-46886 AND TO SHOW MONUMENTS SET ON-LINE AT THE OWNER'S REQUEST

RECORD OF SURVEY

A PORTION OF NW1/4 OF THE NW1/4
OF SECTION 36, T.11N., R.12E., M.D.M.
COUNTY OF EL DORADO STATE OF CALIFORNIA
MARCH, 2003 Scale: 1"= 100'
Cooper, Thorne & Associates, Inc.
Sheet 1 of 1



BASIS OF BEARINGS

THE BASIS OF BEARINGS FOR THIS SURVEY IS IDENTICAL WITH THAT OF P.M. 45-31 FILED IN THE OFFICE OF THE COUNTY RECORDER, BASED ON FOUND MONUMENTS ALONG THE NORTH LINE OF SECTION 36, THAT BEARING BEING N89°02'01"W.

SURVEYOR'S STATEMENT

THIS MAP CORRECTLY REPRESENTS A SURVEY MADE BY ME OR UNDER MY DIRECTION IN CONFORMANCE WITH THE REQUIREMENTS OF THE PROFESSIONAL LAND SURVEYORS ACT AT THE REQUEST OF COUNTY OF EL DORADO IN FEBRUARY, 2003.

Kevin A. Heeneey
KEVIN A. HEENEY L.S. 5914
LICENSE EXPIRES 12-31-2004



COUNTY SURVEYOR'S STATEMENT

THIS MAP HAS BEEN EXAMINED IN ACCORDANCE WITH SECTION 8766 OF THE PROFESSIONAL LAND SURVEYORS ACT THIS 10th DAY OF JUNE, 2003.

Daniel Russell
DANIEL S. RUSSELL L.S. 5017 LICENSE EXPIRES 12-31-05
COUNTY SURVEYOR
COUNTY OF EL DORADO, CALIFORNIA



BY: *Richard I. Briner*
RICHARD I. BRINER L.S. 5084 LICENSE EXPIRES 06-30-07
DEPUTY SURVEYOR
COUNTY OF EL DORADO

RECORDER'S STATEMENT

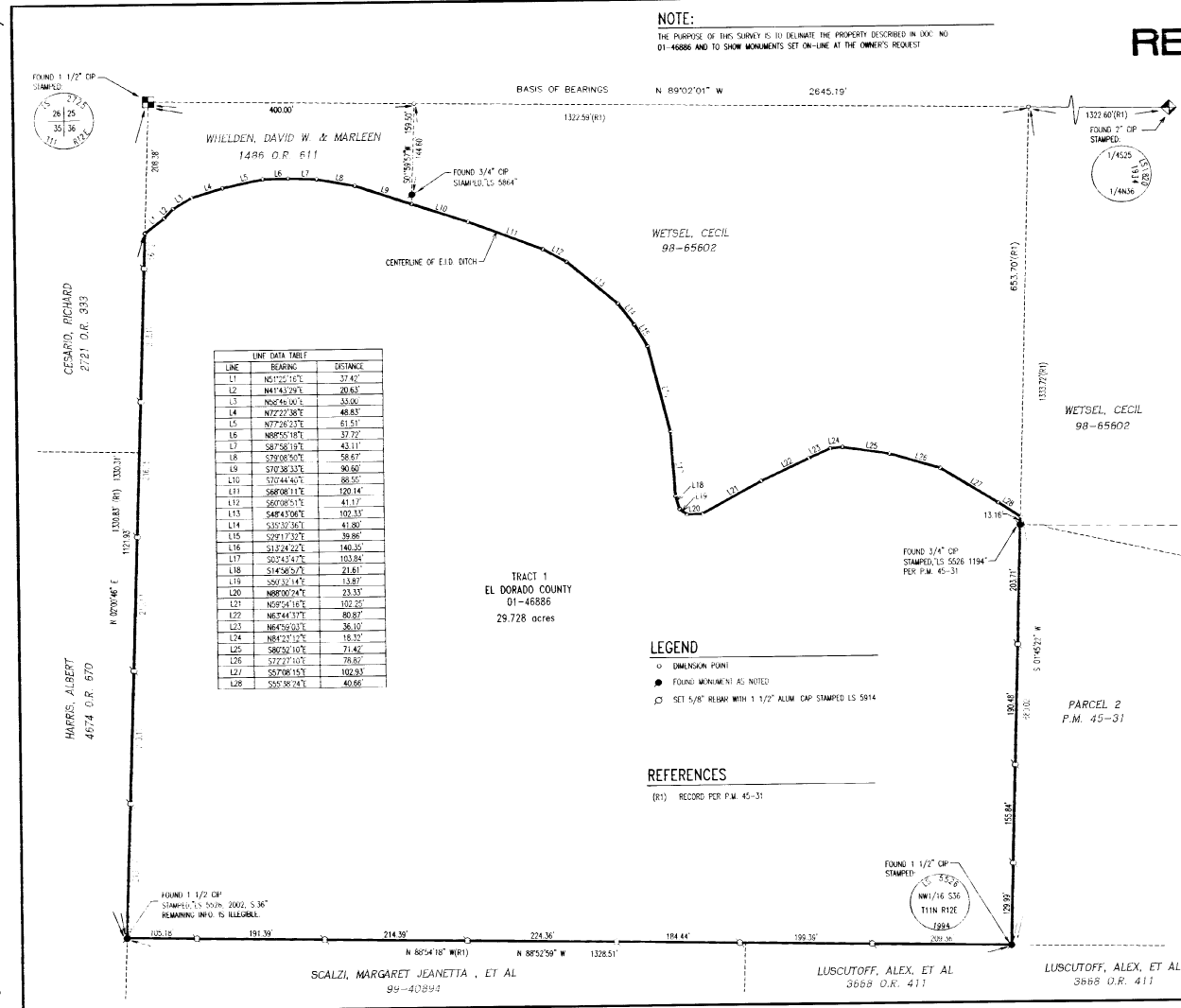
FILED THIS 10 DAY OF JUNE, 2003, AT 11:20:38 AM BOOK 26 OF
RECORD OF SURVEYS, AS PAGE 61, AT THE REQUEST OF THE COOPER, THORNE &
ASSOCIATES, INC.

DOCUMENT NO. 2003-57571

William F. Schultz
WILLIAM F. SCHULTZ
COUNTY RECORDER, CLERK
COUNTY OF EL DORADO

BY: *Subir Saha*
SUBIR SAHA
DEPUTY

EXISTING ASSESSOR'S PARCEL NO. 101-220-10 & 11



LINE	BEARING	DISTANCE
L1	N0°12'16"E	37.42'
L2	N41°44'29"E	20.85'
L3	N56°45'00"E	33.06'
L4	N72°22'38"E	48.83'
L5	N77°26'23"E	61.51'
L6	N89°05'16"E	37.72'
L7	S87°56'19"E	43.11'
L8	S79°06'50"E	58.67'
L9	S70°26'33"E	90.60'
L10	S72°44'40"E	80.55'
L11	S68°08'11"E	120.14'
L12	S67°06'51"E	41.17'
L13	S49°43'06"E	102.33'
L14	S33°52'36"E	43.80'
L15	S29°17'32"E	39.86'
L16	S13°24'22"E	146.30'
L17	S0°42'47"E	103.84'
L18	S14°26'29"E	23.81'
L19	S20°32'14"E	13.87'
L20	N88°00'24"E	23.33'
L21	N59°24'16"E	102.20'
L22	N62°44'13"E	80.92'
L23	N64°52'03"E	36.10'
L24	N84°21'12"E	18.32'
L25	S80°52'10"E	71.42'
L26	S72°07'02"E	79.82'
L27	S57°08'15"E	102.93'
L28	S05°38'24"E	40.66'

LEGEND

- DIMENSION POINT
- FOUND MONUMENT AS NOTED
- SET 5/8" REBAR WITH 1 1/2" ALUM CAP STAMPED LS 5914

REFERENCES

(R1) RECORD PER P.M. 45-31

26/61

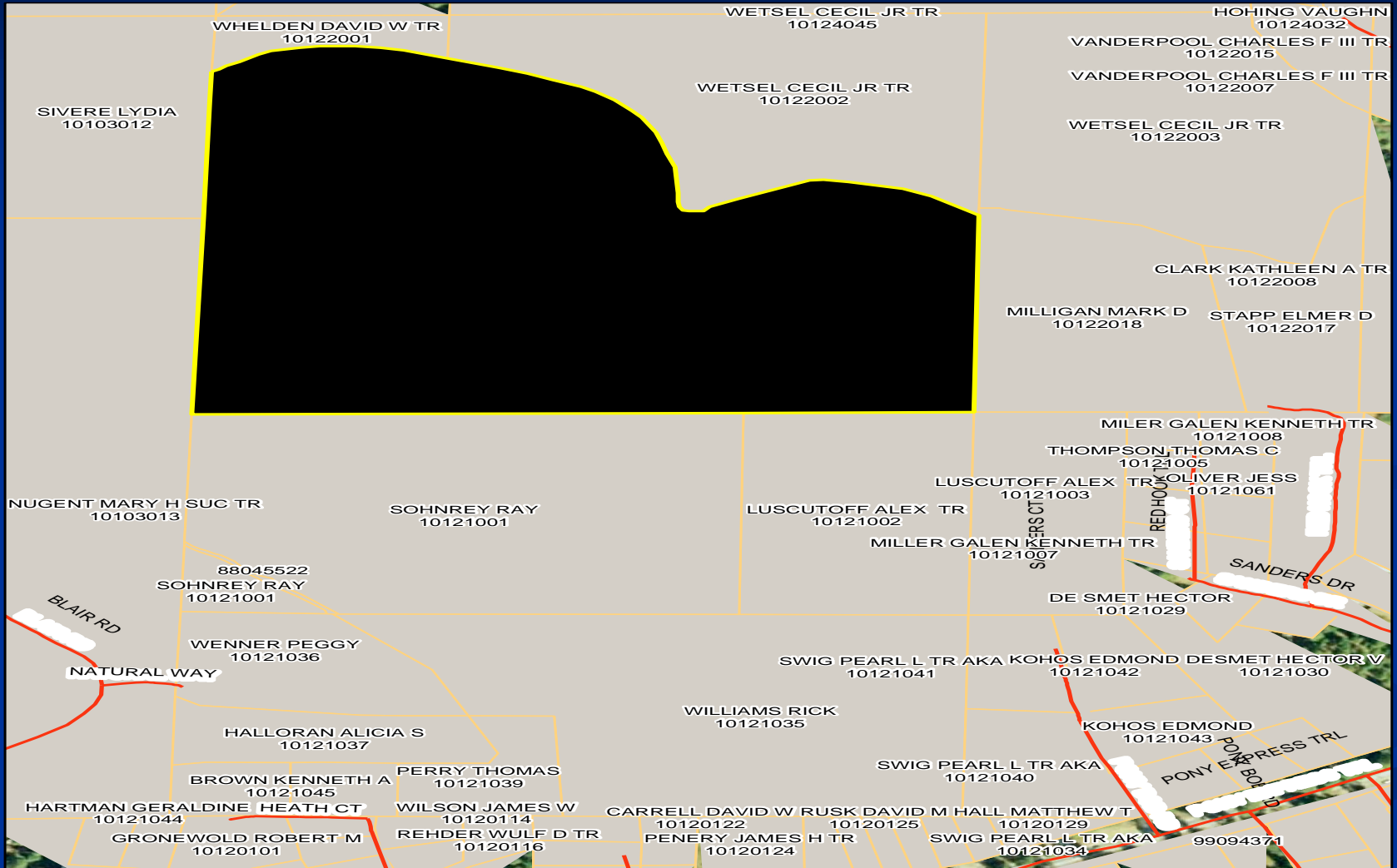
26/61

26/61

26/61

Aerial Photograph

APN 10122019



Disclaimer: This depiction was compiled from unverified public and private sources and is illustrative only. No representation is made as to accuracy of this information. Parcel boundaries are particularly unreliable. Users make use of this depiction at their own risk.



Aerials Copyright 2003,2004,2007 AirPhotoUSA, LLC. All Rights Reserved



Map displayed in State Plane Coordinate System (NAD 1983 California Zone 2, feet)

Vicky Yorty, Executive Director El Dorado Fire Safe Council

Photo Date 1/11/2009



Mix conifer forest ladder fuels ground to canopy



Canopy spacing



Spacing



Canopy Interlocking



Thicket Ground Level Ladder Fuels



Ground Ladder Fuels



Thicket



Down Material



Stubble (stunted growth)



Thicket (ground to canopy)



**Open Canopy (will not touch
standing dead and canopy)**



Dense Thicket



Ground Fuels



Young Hardwood Thinning



Thicket Mixed Woodlands



**Large down material will be left behind;
small material chipped or disposed in
small burn piles**



Our Goal....

“Ground Ladder Fuels Removed”

Property to south: fuels removed



Ground Ladder Fuels Removed

