

# EL DORADO DISPOSAL

## Transfer Station/MRF Presentation



# What Do We Do? What Do We Offer?

## Facility Overview

- We operate the only Transfer Station & Recycling facility on the Western Slope of El Dorado County
- Open 7 days/week – 363 days a year
- Materials processed & transported
  - Municipal solid waste
  - Mixed organics
  - Co-mingled recycling
  - Construction & Demolition
  - Electronic Waste
  - Household Hazardous Waste
  - Tires
  - Mattresses
  - Carpet
  - Metal
  - Oil & Antifreeze
  - Batteries
  - Solar Panels
  - Textiles
  - Appliances
  - Treated Wood

## FREE Services Offered

- Electronic waste
- Textiles
- Mattresses
- Batteries
- Household hazardous waste
- Cardboard
- Assorted recycling
- Scrap metal



# SERVICES BY THE NUMBERS

## Over The Course of a Year

- 11,800 customers utilized household hazardous waste drop off
- 6,300 customers disposed of mattresses
- 20,100 customers disposed of Electronic Waste
- A total of 48,000 transactions for FREE materials
- Avg. 244 paying customers per day
- Avg. cost per paying transaction is \$43.90
- Min charge (up to 1/2 yd of material) is \$22.15
- \$24.44 per yard of trash

## Transfer Station/MRF Rebuild – Rate Impacts

- Total request is 2.74%
  - Minimum charge adjustment - \$0.61
  - Per Yard Adjustment (Trash) - \$0.67
  - Avg. charge per customer adjustment - \$1.20
- Curbside Customer – Rate Impact
  - Area-A:
    - 35-gal customer - \$1.07
    - 64-gal customer - \$1.35
  - Area-B:
    - 35-gal customer - \$0.92
  - Area-C:
    - 35-gal customer - \$0.92



# El Dorado Transfer Station Project

## Requested by the County; Included as Part of the 2014 Franchise Agreement

- Existing MRF inadequate for expanded and future operations – County desired new facility
- New 36,000 SF Building
  - For MSW, Mixed organics, Co-mingled Recyclables, and C&D
  - Separate Tipping Areas (Commercial vs Residential)
  - Drive-thru loadout for transfer trucks
  - Tip to floor – no vertical drop-offs
  - Use of both sides of building on weekends for residential



# El Dorado Transfer Station Project – Cont.

- Franchise Agreement: 4<sup>th</sup> Amendment approved Nov. 2018 – added provision for Contractor to request cost recovery over initial \$12 million.
- Design Changes 2014 to 2024 – Resulted in higher project costs:
  - Existing MRF unable to structurally retrofit, resulted in additional building.
  - Existing circulation had commercial and public cross-traffic, minimized through re-design.
  - Waterboard requirement to remove existing subsurface (lime-waste) soils and remediate. Resulted in extended initial project delay
  - Transfer Station Expansion and Fabric Baler building in lieu of more-costly separate building
  - Offsite Construction and Demolition facility used 2018 to 2024 (Wetsel Oviatt site, El Dorado Hills)
  - Temporary Household Hazardous Waste added to provide services during construction
  - Temporary scale house installed north of site due to lack of room during construction.
  - Onsite storage containment required due to EID wastewater not available to site.







# 2014 Birds Eye (pre-project)

- Former MRF Building
- C&D (outside)
- Existing Lime Waste underground
- Public stacking concern (traffic)
- Limited turn movements



# 2020 Visual Rendering

- Admin Building
- Initial Transfer Building
- HHW
- Free Recycle
- Baler/Co-mingled and C&D (not designed at this point) – building in rear





# Current Conditions



# Entry to Scale

- Good Stacking
- Three lanes potential
- Flow-Thru Sequence:
  - Entry
  - Scale
  - Routing Attendant
  - Drop-Off
  - Exit



# Free Recycle





# Staging



# Operations

- Separate commercial scale
- Commercial and Public Drop-off separate
- Green waste bunkers, canopies, and baler kept separate from public





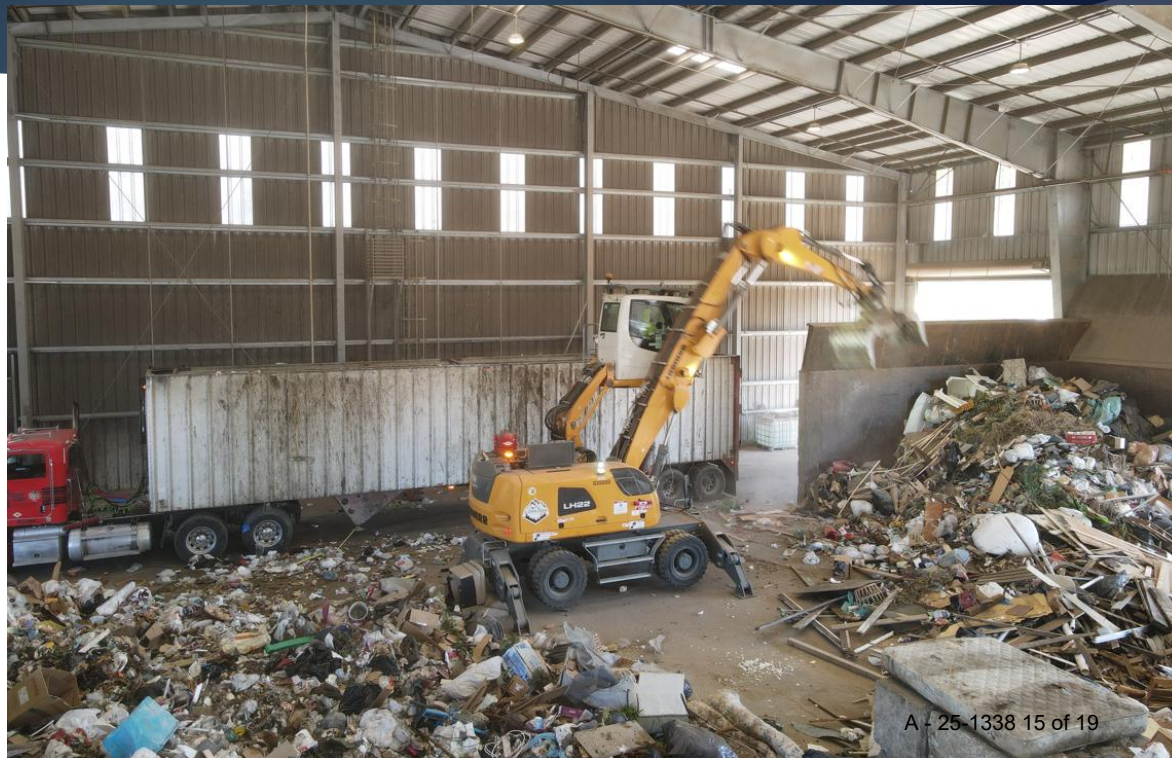
# Operations C&D / Mixed Organics

- C&D sorted, processed, and transferred
- C&D Material is sent out for alternative daily cover, which counts as diversion
- Mixed Organics is transferred off-site for processing



# Operations - Loadouts

- All MSW Indoors
- Dust/Odor Control – Misting System
- Trackout Control
- Future Axle Scales (by Site, no shared cost)





# Operations – Baler & Co-mingled Recyclables

- Materials under cover
- Operations in buildings
- Fire-Rover System throughout



# Community – Education Center





# Transfer Station Recap

- Open 7 days per week
- 12 hours per day
- 363 days per year
- Facility Capacity: 750 tons per day (doesn't include free recycling)
- Vehicle Capacity: 679 vehicles per day





# FINAL NOTES

## NEW SUSTAINABILITY INITIATIVES

- Additional textile recycling opportunities
- Plastic Bag(s) Recovery
- Solar Panels, Vape Pens, Nitrous Oxide solutions
- Compost Program expansion (bagged compost)

## COUNTY PARTNERSHIP

- History of long-term successful partnership
- Completed re-construction project on time despite numerous unforeseen challenges and uncontrollable circumstances
- Completed facility will continue to provide capacity for all the waste on Western Slope of County and various FREE programs for residents for years to come

## COMMUNITY PARTNERSHIP

- Actively engaged in many of the non-profit organizations throughout the county
- We are recognized as being a significant partner in non-profit community activities throughout the county
- Dedicated to continuing our history of being a successful partner for our community

