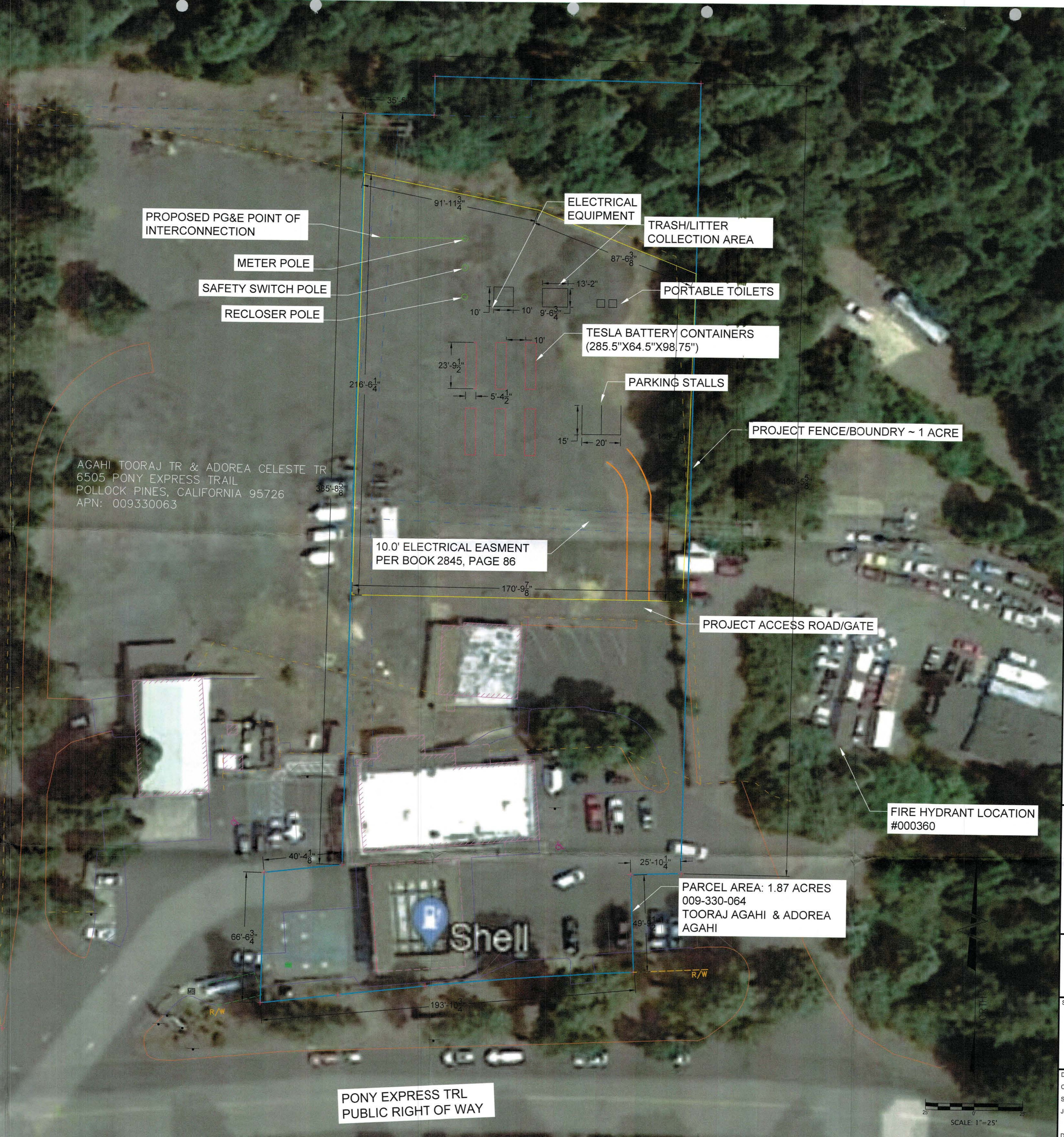


Project: Stella Battery Storage
 Applicant: Apex Energy Solutions LLC
 APN:009-330-064
 El Dorado County
 Zoning: Industrial

STELLA BATTERY PROJECT

CONFIDENTIAL DOCUMENTS
 THE INFORMATION EMBODIED ON THIS DRAWING IS STRICTLY CONFIDENTIAL AND IS SUPPLIED WITH THE UNDERSTANDING THAT IT WILL BE HELD CONFIDENTIAL AND NOT DISCLOSED TO THIRD PARTIES WITHOUT THE PRIOR WRITTEN CONSENT OF ZGLOBAL, INC.

REV.	BY	DESCRIPTION	DATE	APPROD BY
0	OI	SUBMITTAL #1	03/21/22	
1	OI	REV 1	12/10/22	



APPROVED
 EL DORADO COUNTY
 ZONING ADMINISTRATOR
 DATE: *June 5, 2024*
 BY: *Brian Rahman*
 ZONING ADMINISTRATOR
 CUP 22-0010

1 inch
 Scale to Confirm 24"x36" Plot



604 SUTTER ST, STE 250
 FOLSOM, CA 95630
 Phone: 916.985.9461
 Fax: 916.985.9467

"THESE DRAWINGS AND SPECIFICATIONS HAVE BEEN PREPARED BY ZGLOBAL, INC. FOR THEIR EXCLUSIVE USE IN ACCORD WITH SEC. 6737.3 OF THE 2012 PROFESSIONAL ENGINEERS ACT OF THE STATE OF CALIFORNIA"

SHEET TITLE:
PRODUCT SPECIFICATION SHEETS

DRAWN BY:	OI	DRAWING No.	
CHECKED:	AS NOTED		
SCALE:	AS NOTED		
JOB NO:			C-000
DATE:		REV No.	1

AGAHI TOORAJ TR & ADOREA CELESTE TR
 6505 PONY EXPRESS TRAIL
 POLLOCK PINES, CALIFORNIA 95726
 APN: 009330063

Ponderosa Mobile Estates

PONY EXPRESS TRAIL
 PUBLIC RIGHT OF WAY

PARCEL AREA: 1.87 ACRES
 009-330-064
 TOORAJ AGAHI & ADOREA AGAHI

FIRE HYDRANT LOCATION
 #000360

SCALE: 1"=25'