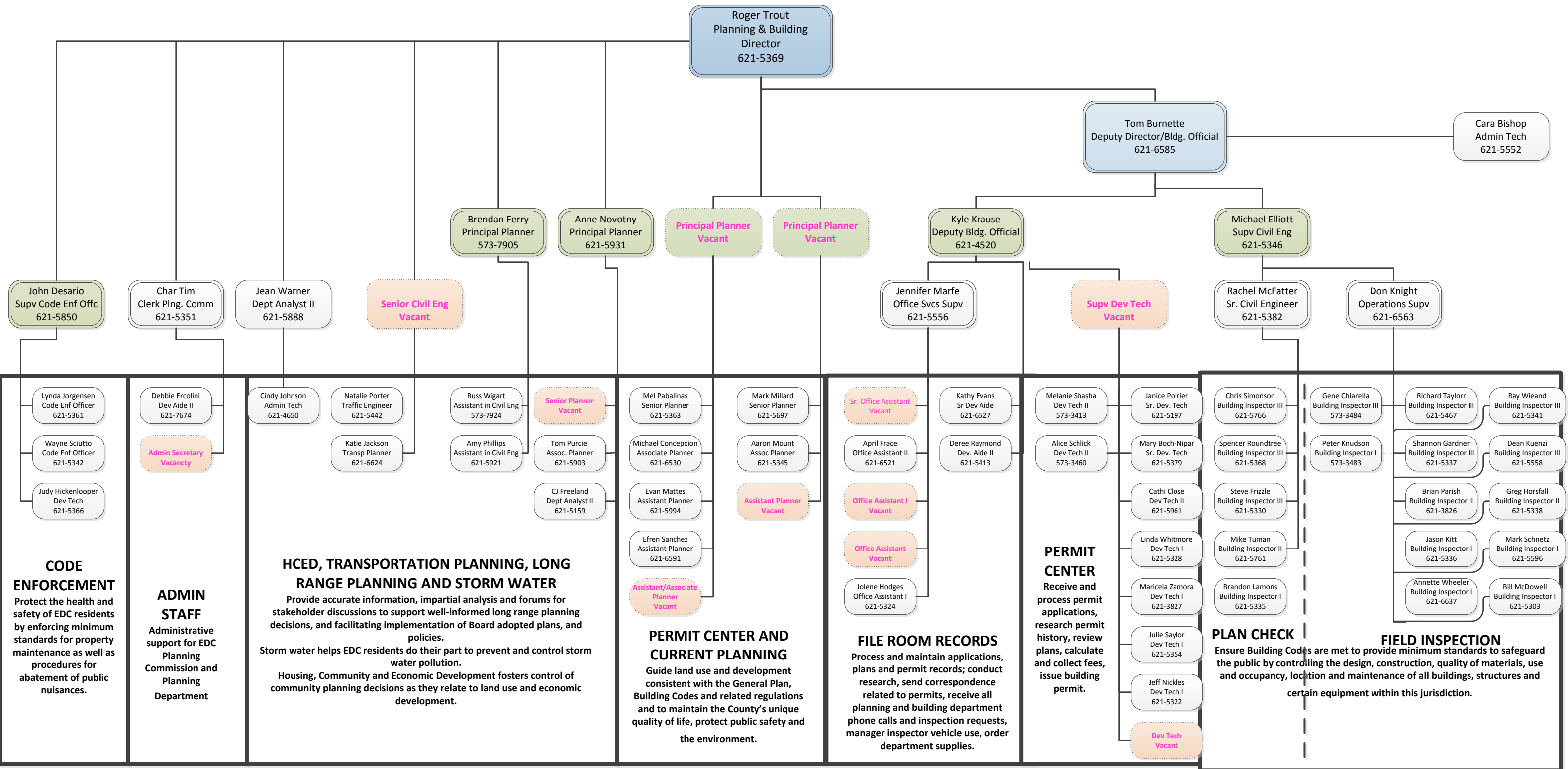


# El Dorado County Planning and Building Department

As of 11/2/17  
60 Employees  
12 Vacant  
Total of 71.8 Allocations



**CODE ENFORCEMENT**  
Protect the health and safety of EDC residents by enforcing minimum standards for property maintenance as well as procedures for abatement of public nuisances.

**ADMIN STAFF**  
Administrative support for EDC Planning Commission and Planning Department

**HCED, TRANSPORTATION PLANNING, LONG RANGE PLANNING AND STORM WATER**  
Provide accurate information, impartial analysis and forums for stakeholder discussions to support well-informed long range planning decisions, and facilitating implementation of Board adopted plans, and policies.  
Storm water helps EDC residents do their part to prevent and control storm water pollution.  
Housing, Community and Economic Development fosters control of community planning decisions as they relate to land use and economic development.

**PERMIT CENTER AND CURRENT PLANNING**  
Guide land use and development consistent with the General Plan, Building Codes and related regulations and to maintain the County's unique quality of life, protect public safety and the environment.

**FILE ROOM RECORDS**  
Process and maintain applications, plans and permit records; conduct research, send correspondence related to permits, receive all planning and building department phone calls and inspection requests, manager inspector vehicle use, order department supplies.

**PERMIT CENTER**  
Receive and process permit applications, research permit history, review plans, calculate and collect fees, issue building permit.

**PLAN CHECK**  
Ensure Building Codes are met to provide minimum standards to safeguard the public by controlling the design, construction, quality of materials, use and occupancy, location and maintenance of all buildings, structures and certain equipment within this jurisdiction.