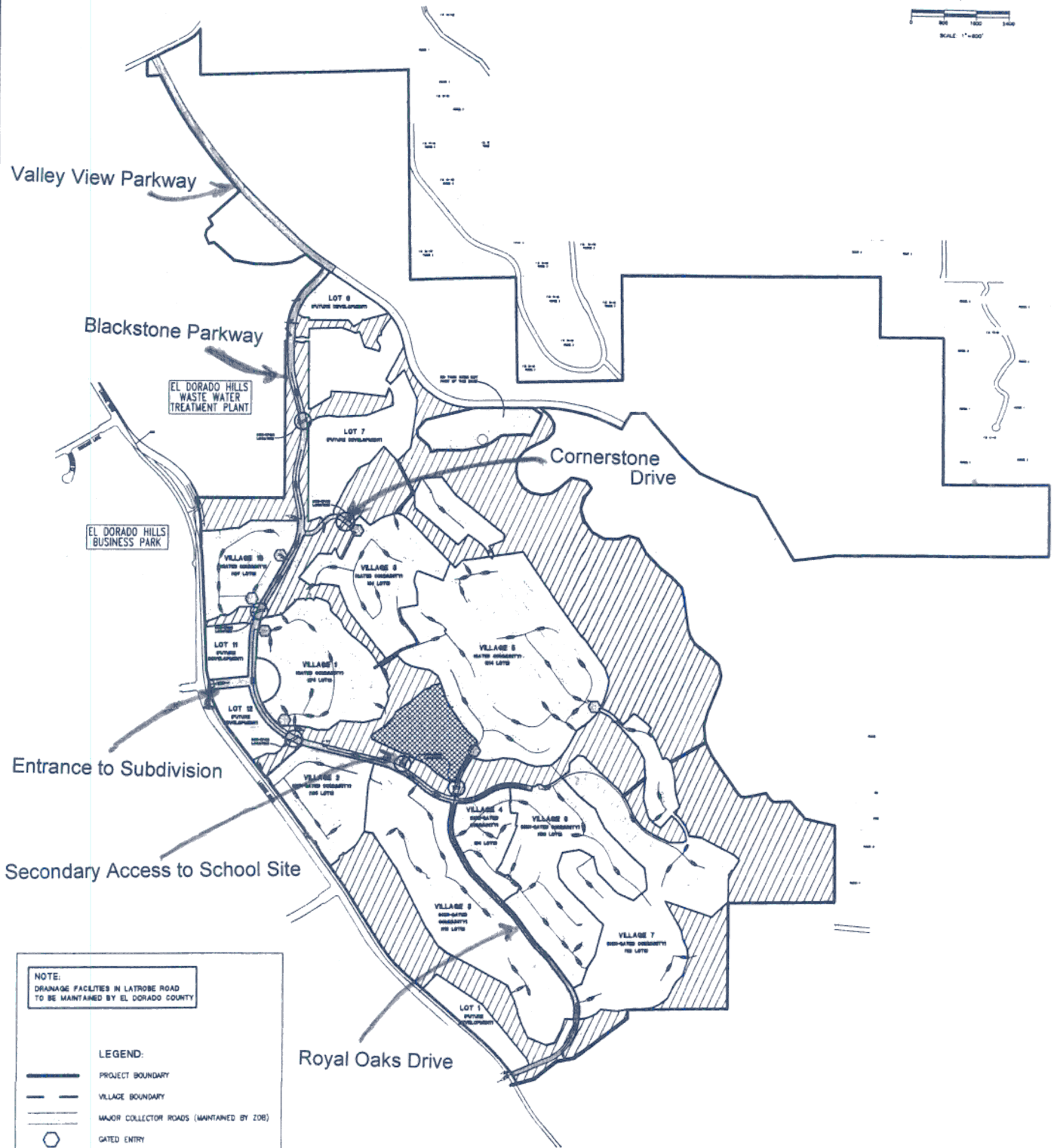
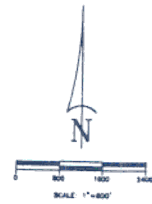


# WEST VALLEY VILLAGE

TM 99-1359  
**OVERALL ZONE OF BENEFIT SERVICE AREA**  
 EL DORADO HILLS CALIFORNIA

JULY, 2007



**NOTE:**  
 DRAINAGE FACILITIES IN LATROBE ROAD  
 TO BE MAINTAINED BY EL DORADO COUNTY

**LEGEND:**

- PROJECT BOUNDARY
- VILLAGE BOUNDARY
- MAJOR COLLECTOR ROADS (MAINTAINED BY ZOB)
- GATED ENTRY
- OPEN SPACE (MAINTAINED BY OTHERS)
- SCHOOL SITE (MAINTAINED BY OTHERS)
- E.I.D. TANK SITE (MAINTAINED BY OTHERS)

**Exhibit A**

