

Quincy Engineering, Incorporated

THIRD AMENDMENT TO AGREEMENT FOR SERVICES #467-S1411

THIS THIRD AMENDMENT to that Agreement for Services #467-S1411 made and entered into by and between the County of El Dorado, a political subdivision of the State of California (hereinafter referred to as "COUNTY"), and Quincy Engineering, Incorporated, a corporation duly qualified to conduct business in the State of California, whose principal place of business is 11017 Cobblersrock Drive, Suite 100, Rancho Cordova, California 95670 (hereinafter referred to as "CONSULTANT");

RECITALS

WHEREAS, CONSULTANT has been engaged by COUNTY to provide project delivery support services, including updating the feasibility study, and providing environmental support services for the Mosquito Road Bridge at the South Fork American River Project for its Community Development Services, Department of Transportation pursuant to Agreement for Services #467-S1411, dated July 29, 2014; First Amendment to Agreement for Services #467-S1411, dated March 7, 2017; and Second Amendment to Agreement for Services #467-S1411, dated August 15, 2017; incorporated herein and made by reference a part hereof (hereinafter referred to as "Agreement");

WHEREAS, the parties hereto desire to amend the Agreement to revise the scope of services, amending **ARTICLE I, Scope of Services**, and adding **Exhibit A-1, Additional Scope of Work**;

WHEREAS, the parties hereto desire to amend the Agreement to include a new fee schedule for the extended term of the Agreement, amending **ARTICLE II, Compensation for Services**, **ARTICLE V, Allowable Costs and Payments**, and **ARTICLE LII, Claims Filed by County's Construction Contractors**, and adding **Amended Exhibit B, Amended Rate Schedule**;

WHEREAS, the parties hereto desire to amend the Agreement to update the performance period, amending **ARTICLE IV, Performance Period**;

WHEREAS, the parties hereto desire to amend the Agreement to increase the not-to-exceed compensation amount of the Agreement by \$3,113,920 for a total not-to-exceed amount of \$6,457,483 and to increase the fixed fee amount of the Agreement by \$147,897, amending **ARTICLE V, Allowable Costs and Payments**, and adding **Amended Exhibit C-2, Amended Cost Proposal**;

NOW, THEREFORE, in consideration of the foregoing and the mutual promises and covenants hereinafter contained, COUNTY and CONSULTANT mutually agree to amend the terms of the Agreement in this Third Amendment to Agreement on the following terms and conditions:

- I. Exhibit A and Amended Exhibit A are replaced with Exhibit A, Amended Exhibit A, and Exhibit A-1, attached hereto and incorporated herein by reference. All references to Exhibit A and Amended Exhibit A throughout the Agreement are substituted with Exhibit A, Amended Exhibit A, and Exhibit A-1.
- II. Exhibit C-1 is replaced in its entirety with Exhibit C-2, attached hereto and incorporated herein by reference. All references to Exhibit C-1 throughout the Agreement are substituted with Exhibit C-2.
- III. **ARTICLE II, Compensation for Services**, the second and fifth paragraphs of the Agreement are amended in its entirety to read as follows:

For the period beginning July 29, 2014, the effective date of the Agreement, and continuing through the day before the effective date of this Third Amendment to the Agreement, for the purposes hereof, the billing rates shall be in accordance with Exhibit B, marked "Rate Schedule," incorporated herein and made by reference a part hereof.

For the period beginning with the effective date of this Third Amendment to the Agreement and continuing through the remaining term of the Agreement, for the purposes hereof, the billing rates shall be in accordance with Amended Exhibit B, marked "Amended Rate Schedule," incorporated herein and made by reference a part hereof.

For the purposes of budgeting the items of work identified in Exhibit A, Amended Exhibit A, and Exhibit A-1, the maximum allowable billing amounts for each item of work are described in Amended Exhibit C-2, marked "Amended Cost Proposal," attached hereto and incorporated herein by reference. The amounts indicated in Amended Exhibit C-2 represent the composition of the total not-to-exceed budget for the various tasks. In the performance of the scope of services to be provided under this Agreement, CONSULTANT may request to reallocate the expenses listed in Amended Exhibit C-2 among the various Scope of Work tasks and Items of Work, Other Direct Costs, and Optional Tasks identified therein, including reallocating such expenses between subconsultants listed in Amended Exhibit C-2, subject to COUNTY's Contract Administrator's prior written approval.

- IV. **ARTICLE IV, Performance Period**, paragraph A of the Agreement is amended in its entirety to read as follows:
 - A. This Agreement shall go into effect upon execution, contingent upon approval by COUNTY, and CONSULTANT shall commence work after notification to proceed by COUNTY's Contract Administrator. The Agreement shall expire upon COUNTY's award of the construction contract for the Project.

V. ARTICLE V, Allowable Costs and Payments, paragraphs A, B, H, and I of the Agreement are amended in its entirety to read as follows:

- A. The method of payment for this contract will be based on actual cost plus a fixed fee. COUNTY will reimburse CONSULTANT for actual costs (including labor costs, employee benefits, travel, equipment rental costs, overhead and other direct costs) incurred by CONSULTANT in performance of the work. CONSULTANT will not be reimbursed for actual costs that exceed the estimated wage rates, employee benefits, travel, equipment rental, overhead, and other estimated costs set forth in Amended Exhibit B, unless additional reimbursement is provided for by contract amendment. In no event will CONSULTANT be reimbursed for overhead costs at a rate that exceeds COUNTY's approved overhead rate set forth in Amended Exhibit B. In the event that COUNTY determines that a change to the work from that specified in Exhibit A, Amended Exhibit A, or Exhibit A-1 is necessary, the contract time or actual costs reimbursable by COUNTY shall be adjusted by an amendment to this Agreement to accommodate the changed work. The maximum total cost as specified in Paragraph "H," as amended, shall not be exceeded, unless authorized by an amendment to the Agreement prior to exceeding the maximum total cost.
- B. In addition to the allowable incurred costs, COUNTY will pay CONSULTANT a total fixed fee of \$254,780, as amended. The fixed fee is nonadjustable for the term of the contract, except in the event of a significant change in the scope of work and such adjustment is made by contract amendment.
- H. The total amount payable by COUNTY, including the fixed fee, shall not exceed \$6,457,483, as amended.
- I. Salary increases will be reimbursable if the new salary is within the salary range identified in the approved Cost Proposals and is approved by COUNTY's Contract Administrator prior to the increase.

VI. ARTICLE LII, Claims Filed by COUNTY's Construction Contractors, paragraph B of the Agreement is amended in its entirety to read as follows:

- B. CONSULTANT's personnel and subconsultants that COUNTY considers essential to assist in defending against construction contractor claims shall be made available on reasonable notice from COUNTY. Any consultation or testimony that may be required by COUNTY will be reimbursed at the same rates that are being paid for CONSULTANT's personnel services under Amended Exhibit B hereto.

Except as herein amended, all other parts and sections of Agreement for Services #467-S1411, as amended, shall remain unchanged and in full force and effect.

Requesting Contract Administrator Concurrence:

By: 
Matthew D. Smeltzer, P.E.
Deputy Director, Engineering
Fairlane Engineering Division
Community Development Services
Department of Transportation

Dated: 2/6/18

Requesting Department Concurrence:

By: 
Rafael Martinez, Director
Community Development Services
Department of Transportation

Dated: 8/6/18

IN WITNESS WHEREOF, the parties hereto have executed this Third Amendment to Agreement for Services #467-S1411 on the dates indicated below.

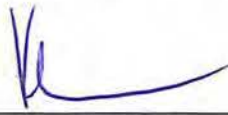
--COUNTY OF EL DORADO--

By: 

Dated: 8/28/2018

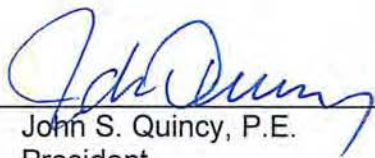
Board of Supervisors
"COUNTY"

Attest:
James S. Mitrison
Clerk of the Board of Supervisors

By: 
Deputy Clerk

Dated: 8/28/2018

--QUINCY ENGINEERING, INCORPORATED--

By: 
John S. Quincy, P.E.
President
"Consultant"

Dated: 7/31/18

By: 
Steve L. Mellon, P.E.
Corporate Secretary

Dated: 7/31/18

Quincy Engineering, Incorporated

Exhibit A-1

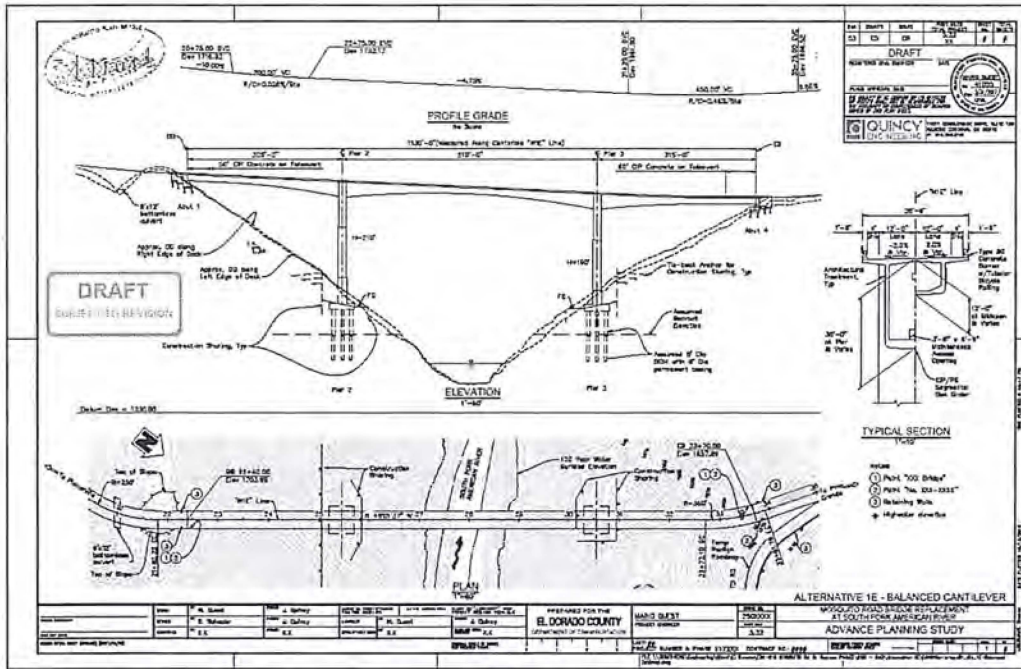
Additional Scope of Work

In accordance with the Agreement between COUNTY and CONSULTANT, CONSULTANT shall complete the work described below in this Exhibit A-1 in addition to the work described in Exhibit A and Amended Exhibit A. CONSULTANT's services are specifically in support of the Mosquito Road Bridge at South Fork American River Project.

PROJECT BACKGROUND

For the Mosquito Road Bridge at South Fork American River Replacement Project, CONSULTANT's Project Development Team (PDT) considered multiple potential roadway alignments and refined them down to three (3) alignment alternatives. The Project alternatives were studied to identify potential environmental impacts and to develop mitigation measures to minimize potential impacts. At the conclusion of the detailed environmental assessment process, environmental documents were approved by COUNTY to comply with CEQA and by Caltrans/FHWA to comply with NEPA. Specific mitigation measures were identified by CONSULTANT and shall be incorporated as part of the Project development and construction processes.

As a result of preliminary studies, alternative bridge types and configurations, cost estimates, right of way impacts, assessment of environmental impacts, and other considerations, the first alignment (high level) was identified as the preferred alignment. Additionally, after extensive analysis, the Balanced Cantilever Constructed, Cast-in-Place-Concrete Box Girder was selected as the preferred bridge type. This bridge type is depicted in the planning study shown below:



The Bridge Type Selection was presented to Caltrans and FHWA to gain their concurrence on the location, roadway alignment, bridge configuration, construction cost estimates, and Project funding.

Based on that approval, the Final Design of the Project is set to proceed. The following discussion represents the Items of Work and deliverables anticipated to complete the final design of the Project and prepare it for advertising for construction bids.

SCHEDULE AND DELIVERABLES

Unless otherwise indicated below, and notwithstanding any other provisions of this AGREEMENT to the contrary, CONSULTANT shall submit all deliverables in accordance with ARTICLE I, Scope of Services, and as described in the Items of Work herein.

Unless otherwise indicated below, CONSULTANT shall submit all draft documents and/or reports to COUNTY's Contract Administrator (CA) for review and comment prior to the preparation of the final documents and/or reports. CONSULTANT shall incorporate COUNTY's CA's comments into final documents and/or reports subject to agreement by CONSULTANT and COUNTY's CA.

Draft deliverables shall be submitted in electronic Microsoft Word format to COUNTY's CA unless otherwise stated. Final deliverables shall be submitted in Adobe portable document format (PDF) to COUNTY's CA unless otherwise stated. The budgeted cost for the Project includes up to two (2) rounds of review by COUNTY for all deliverables unless otherwise stated.

Due to the fact that the timing of deliverables for a complex Project such as this is dependent upon multiple variables from multiple agencies, completion times are approximate. However, in the event of unforeseen delays, significant adjustments to the completion times specified may only be made upon written approval of COUNTY's CA.

PHASE 3, ITEM OF WORK 3.1: Project Management/Meetings – WBS Activity ID D010I

CONSULTANT shall provide communication and coordination with COUNTY and continue to coordinate with Caltrans and other agencies in the Project development process. CONSULTANT shall lead PDT meetings and shall distribute approved meeting agendas, arrange attendance of key PDT members, and distribute meeting notes along with a summary of action items.

CONSULTANT shall be responsible for critical path schedule updates, Quality Assurance/Quality Control (QA/QC), technical management, budget adherence, and monitoring. This Item of Work includes regular monthly invoicing and Progress Reports. Progress Reports shall be submitted in accordance with ARTICLE III, Progress Reports, of the Agreement, as amended, to facilitate Project oversight.

Activities:

- Prepare schedule updates, invoices, progress reports, and provide QA/AC.

Deliverables:

- Progress reports and invoices
- Schedule updates

Duration:

- Monthly for duration of Project

PDT Meetings

CONSULTANT shall schedule and coordinate PDT meetings either in person, by email, or by telephone at key Project milestones. Bi-monthly PDT meetings shall be scheduled during the Project development phase.

Activities:

- Facilitate up to eighteen (18) PDT meetings.
- Prepare up to eighteen (18) draft PDT meeting agendas. Submit to COUNTY's CA for review and incorporate comments prior to the PDT meetings.
- Prepare up to eighteen (18) final PDT meeting agendas. Submit to COUNTY's CA.
- Prepare up to eighteen (18) draft PDT summary meeting notes. Submit to meeting attendees via email.
- Prepare up to eighteen (18) final PDT summary meeting notes. Submit to meeting attendees via email.

Assumptions:

- Eighteen (18) PDT meetings are anticipated and shall be held periodically as necessary.

Deliverables:

- Draft PDT meeting agenda
- Final PDT meeting agenda
- Draft PDT summary meeting notes
- Final PDT summary meeting notes

Duration:

- Meetings shall occur as needed throughout Project duration.
- Draft PDT meeting agendas shall be submitted to COUNTY for review within one (1) week of the PDT meeting.
- Final PDT meeting agendas shall be distributed within two (2) days of the PDT meeting.
- Draft summary meeting notes shall be distributed within one (1) week of the PDT meeting.
- Final summary meeting notes shall be distributed within two (2) days of COUNTY's review of the draft summary meeting notes.

PHASE 3, ITEM OF WORK 3.2: Bridge and Roadway Design and 65% Plans – WBS Activity ID D205I

The bridge design services shall include the preparation of traffic control plans, construction plans, and specifications utilizing COUNTY and Caltrans Standards, and AASHTO Geometric Design guidelines, detailed cost estimates, and bid documents utilizing standard COUNTY construction contract provisions.

The 65% Submittal (Unchecked Details) Package includes the following: General Plan; Foundation Plan; Abutment and Elevation Plan; Typical Sections; Test Borings/Geotechnical Report; Traffic Control Plan; and Roadway, Drainage, and Civil Plans.

Various entities shall be responsible for completing the design and plans for each design element on the Project as defined below:

CONSULTANT shall perform the roadway design, stage construction, traffic handling, abutment and pier retaining wall design, abutment design, and other elements.

International Bridge Technologies (IBT) shall perform the main bridge superstructure design, pier cap design, column design, and pier footing designs.

COUNTY and WRECO shall perform peer review and design services for drainage design and details associated with all Project features including storm water considerations and the corresponding storm water and drainage reports. COUNTY will perform the original drainage and storm water designs and compile the reports for WRECO's review. Alternatively, as an OPTIONAL TASK, and at the direction of

COUNTY, WRECO may also perform the full design and compiling of the drainage and storm water reports.

COUNTY will perform similar drainage design and details for all features on the north side of the river, design of the modifications to the existing roadway and approach to the existing bridge, and develop the water pollution and erosion control plans. As an OPTIONAL TASK, and at the direction of COUNTY, Mark Thomas may design the south approach crossing to include the drainage infrastructure (such as the culvert/crossing design) and retaining walls for the drainage gulch immediately south of the bridge abutment.

Y&C shall develop the electrical and lighting plans for traffic aviation lighting (if necessary) and lighting the interior of the bridge box girder superstructure for future maintenance inspections.

Cadre Design Group shall provide drafting support for various bridge plans and develop 3D models of the structural elements to verify constructability.

- Bridge Design: Bridge design shall be prepared in accordance with the AASHTO LRFD Bridge Design Specifications 6th Edition, with Caltrans amendments dated 2014 and other Caltrans design manuals. Design shall be prepared in accordance with the Load Resistance Factor Design method, with TL-93 and permit truck design live loads, Caltrans Seismic Design Criteria Version 1.7 April 2013, and the latest information available from Caltrans Earthquake Research.
- Approach Roadway Design: The final approach roadway design (Geometric Approval Drawings) shall be completed in accordance with COUNTY Standards, AASHTO Green Book - *A Policy on Geometric Design of Highways and Streets*, Caltrans *Highway Design Manual*, and Caltrans *Standard Specifications*. Final grading and drainage details shall be developed as well as new/existing roadway conformance details, as required. Cross-sections shall be developed on 20-foot intervals. Detour plans and Project signing shall be developed as well as bridge and roadway embankment protection (rock slope protection) details. Retaining walls and supplemental drainage features shall be designed and detailed.
- 65% Plans The plan sheets shall be prepared in CADD according to COUNTY's and Caltrans' drafting standards. Plans shall be prepared in English units and shall be consistent with Caltrans' Standard Plans.

Deliverable:

- 65% Bridge and Roadway Plans (electronic PDF format)

Meeting(s):

- Coordination meeting conference calls, sixteen (16) are anticipated

PHASE 3, ITEM OF WORK 3.3: Right-Of-Way Engineering – WBS Activity ID D100J

COUNTY will perform all right of way engineering, appraisals, and acquisitions for the Project. CONSULTANT shall coordinate with COUNTY to assess right-of-way impacts at the Project site including delineating the existing right-of-way lines and propose permanent easements and/or temporary construction easements based on the Project footprint and anticipated required staging areas.

PHASE 3, ITEM OF WORK 3.4: Utility Coordination/Design – WBS Activity ID D230I

Utility notifications and coordination with utility companies will be performed by COUNTY. Unless specifically stated, it is assumed that all new or relocated utility facilities will be designed and constructed by the applicable utility owners.

CONSULTANT shall attend a Project utility coordination meeting with the affected utilities to review the 65% plans with the affected utility owners. The meeting shall be held at the Project site, where conceptual relocation details can be discussed. At the draft PS&E stage, CONSULTANT shall attend another utility coordination meeting at the Project site to confirm the final relocation strategy and schedule for construction.

CONSULTANT shall plot existing utility facilities onto utility sheets for utility relocations, identify impacted utility facilities with the Project limits, and shall provide conflict maps for each impacted facility to COUNTY. The utility sheets shall be included in the construction contract, if applicable and provided by CONSULTANT with COUNTY support and coordination. CONSULTANT shall design for passage, conduits, and supports of wet and dry utilities that may pass under the bridge approaches and through the structure.

Deliverables:

- Utility sheets for utility relocations

PHASE 3, ITEM OF WORK 3.5: Independent Design Check – WBS Activity ID D225I

- Independent Check Bridge – CONSULTANT shall provide an independent detailed check of the bridge superstructure, piers, and pier footings developed by IBT during the previous Item of Work. CONSULTANT shall also perform the independent check of the large culvert and retaining walls designed by Mark Thomas in the previous Item of Work. IBT shall perform the independent check of CONSULTANT's designs for the abutments, abutment retaining walls, and pier retaining walls. This shall be performed by a licensed engineer that has not previously worked on the design of the Project. This shall include gravity and seismic analysis and capacity/demand ratio checks of major bridge members (superstructure and substructure) as well as a sheet-by-sheet review of the plans and details for accuracy, readability, and consistency.

- Independent Check Road - CONSULTANT shall provide an independent detailed check of the roadway design and plans. This shall be performed by a licensed engineer that has not previously worked on the design of the Project.

Deliverables:

- Independent check of large culvert and retaining walls (electronic PDF format)
- Independent bridge design check calculations and plan check (electronic PDF format)
- Independent roadway design check calculations and plan check (electronic PDF format)

Meetings:

- Coordination meeting conference calls, six (6) are anticipated

PHASE 3, ITEM OF WORK 3.6: Technical Special Provisions – WBS Activity ID D315I

Specifications – CONSULTANT shall compile draft and final technical special provisions for the Project with input from IBT, Mark Thomas, Crawford and Associates, Incorporated, ICF, and COUNTY. The basis of the specifications shall be the Caltrans 2015 Standard Specifications. CONSULTANT shall include required mitigation measures and permitting requirements from the environmental permits in the specifications. CONSULTANT shall include working days, construction staging, traffic control, and utility coordination in the specifications. CONSULTANT, IBT, and COUNTY shall each review the combined specification package and meet to discuss the overall package to assure that Project specifications are thorough and complete.

Assumption:

- COUNTY will prepare the boiler plate documents, including the notice to bidders, proposal, bond forms, and agreement, and combine the Project special provisions into COUNTY's boiler plate

Deliverables:

- Draft and final Technical Special Provisions (Sections 8, 9, and 10)

Meetings:

- Coordination meeting conference calls, three (3) are anticipated

PHASE 3, ITEM OF WORK 3.7: Construction Quantities and Estimates – WBS Activity ID D315I

Quantities and Estimate – CONSULTANT, IBT, Mark Thomas, and COUNTY shall develop construction quantities and the PDT's estimate of construction costs (Q and E). Two (2) independent sets of bridge quantity calculations shall be prepared by CONSULTANT's staff experienced in this work. The quantity calculations shall be organized and detailed for use by field inspectors during construction. Standard Caltrans summary sheets shall be used for bridge and road quantity calculations, aiding

in facilitating the review process and use by the construction personnel. Bridge quantity estimators must agree within tolerances prescribed in Chapter 11 of the Caltrans Bridge Design Aids Manual. Any deviations shall be resolved, and the Marginal Estimate sheet shall be prepared.

CONSULTANT shall apply unit prices to each contract item resulting in the Engineer's Estimate of Probable Construction Cost (Estimate). Prices used shall be based on the latest available data from COUNTY and Caltrans, reflecting the location of the Project and the quantity of each item. The estimate shall be segregated into two (2) categories: roadway and bridge. Non-participating costs, if any, shall also be segregated. Five (5) percent of the total estimate shall be added for contingencies in accordance with current Caltrans guidelines, and an additional five (5) percent COUNTY contingency shall also be added to arrive at the cost presented to COUNTY.

Deliverables:

- Pay item quantities and check quantities
- Engineers estimate of probable construction costs

Meetings:

- Coordination meeting conference calls, three (3) are anticipated

PHASE 3, ITEM OF WORK 3.8: Quality Control and Constructability Review – WBS Activity ID D320I

CONSULTANT's senior level engineer shall review the entire draft PS&E (90% PS&E) package for uniformity and compatibility as well as conformance with the Federal HBP requirements. The review shall include comparing bridge plans with the roadway plans for conflicts or inconsistencies, and to ensure that the final design is prepared in accordance with all Project documents. CONSULTANT shall address and resolve all comments.

Concurrently, COUNTY will perform a similar review of the entire draft PS&E package, and to also verify that the PS&E package conforms to COUNTY policies and standards for advertising projects for construction.

A meeting with CONSULTANT's Team and COUNTY shall be held to review all outstanding comments and to gain concurrence on specific changes that shall be incorporated in the final PS&E package.

CONSULTANT shall summarize and incorporate comments into the Project plans prior to 95% PS&E.

Deliverables:

- QAQC checklist and review comment summary form on draft PS&E (90%)

PHASE 3, ITEM OF WORK 3.9: Submittal of 95% (Draft) PS&E – WBS Activity ID D320I

CONSULTANT and IBT shall develop the 95% submittal including:

- Checked complete structure/roadway design plans
- COUNTY Boiler Plate Specifications and Special Provisions
- Detailed construction cost estimate and working day schedule
- COUNTY's red-lined set of 65% plan comments
- CONSULTANT shall address the 65% review comments and provide a written response form. All conflicts shall be resolved
- PDF files of entire submittal

Deliverables:

- 95% PS&E Submittal
- 65% PS&E COUNTY's comments summary and response form

Meetings:

- Coordination meeting conference calls, three (3) are anticipated

PHASE 3, ITEM OF WORK 3.10: Submittal of 100% (Final) PS&E – WBS Activity ID D425I

Upon receipt of comments from the Draft 95% PS&E submittal to COUNTY, and other jurisdictional agencies, which shall be routed through COUNTY, final revisions shall be made. CONSULTANT and IBT shall incorporate appropriate comments in the plans, specifications, and estimate.

CONSULTANT shall incorporate comments and submit final plans, specifications, and estimate to COUNTY. CONSULTANT shall perform an independent QA/QC review of the 100% submittal package and verify that appropriate revisions are incorporated prior to submittal to COUNTY.

CONSULTANT shall submit the following final plans, specifications, and estimate:

- Final design plans with cover sheet stamped and signed by the Project engineer in 11"x17" sizes
- One (1) original stamped and wet-signed signature page of the Special Provisions
- Contract Specifications
- Final design and design check calculations
- Quantity and quantity check calculations
- Working day schedule
- COUNTY's red-lined set of 95% plan comments
- CONSULTANT's response to comments documentation
- Final Engineer's Estimate
- Resident Engineer's File produced in COUNTY's format
- PDF files of entire submittal of 100% PS&E

Deliverables:

- 100% Bid ready PS&E
- Final stamped design and design check calculations
- Quantity and quantity check calculations
- Working day schedule
- COUNTY's red-lined set of 95% plan comments
- Resident Engineer's File produced in COUNTY's format
- PDF files of entire submittal

Meetings:

- Coordination meeting conference calls, five (5) are anticipated

PHASE 3, Optional Services

COUNTY may require CONSULTANT to perform Optional Services. Such Optional Services may supplement, expand, or otherwise modify the amended Scope of Work and the Supplemental Item of Work or may include, but not be limited to, tasks that are deemed critical by COUNTY's CA. If CONSULTANT's services are required for Optional Services, CONSULTANT shall submit a written scope of work for the specific tasks identified, not-to-exceed budget amount, and schedule for the tasks. COUNTY's CA will issue separate written Task Orders and/or Work Orders for CONSULTANT to perform those tasks in accordance with the provisions of this Agreement. CONSULTANT shall not commence any work on Optional Services prior to receiving a fully-executed Task Order or Work Order, as applicable, from COUNTY.

Optional Task - Bid Assistance – WBS Activity ID D425I

Contractor Outreach Meeting – At the direction of COUNTY, CONSULTANT and IBT shall participate in a contractor outreach meeting to be held approximately two (2) months prior to the actual advertisement for bids on the construction contract. The meeting shall include the schedule of the advertising for bids, pertinent Project information including environmental construction windows, right-of-way, access, utilities, and key construction features.

Pre-Bid Meeting – WBS Activity ID A010I/E

At the direction of COUNTY, CONSULTANT and IBT shall participate in a mandatory pre-bid meeting to be held at COUNTY offices. The pre-bid meeting shall be led by COUNTY staff and include the formal bid information, DBE utilization, required bid submittals, and a Project site visit.

Bid assistance services provided shall generally consist of submitting an electronic copy of the final approved plans and specifications and any other related Project information to assist COUNTY in advertising the Project for bids. COUNTY will make copies of contract documents and distribute such documents as appropriate. CONSULTANT shall be available to interpret the plans and specifications, respond to questions from potential contractors that arise during the bidding process, provide general consultation to COUNTY, and prepare addenda as needed, which will be distributed by COUNTY as necessary.

When the construction bids are opened, CONSULTANT shall be available to provide analysis and recommendations concerning award of the contract.

Deliverable:

- Bid Assistance
- Responses to RFI's during bidding process
- Addenda, analysis, and recommendation for award

Meetings:

- Contractor Outreach Meeting at COUNTY office
- Pre-bid meeting at COUNTY office
- Coordination meeting conference calls, five (5) are anticipated

Quincy Engineering, Incorporated

**Amended Exhibit B
Amended Rate Schedule**

Labor by Classification	Hourly Rate
Principal Engineer/Principal-in-Charge	\$70 - \$105
Associate Principal Engineer	\$60 - \$87
Senior Engineer	\$49 - \$79
Associate Engineer	\$32 - \$63
Assistant Engineer I*	\$26 - \$46
Assistant Engineer II*	\$32 - \$55
Senior Engineering Tech*	\$33 - \$57
Engineering Tech/Assistant*	\$21 - \$41
CAD Manager	\$34 - \$56
CAD Tech*	\$22 - \$37
Student Assistant/Intern*	\$16 - \$25
Administrative Assistant/Support Staff*	\$12 - \$55
Senior Project Manager/Proj Manager	\$55 - \$95
Project Manager Assistant	\$25 - \$46
Project Engineer	\$37 - \$87
Resident Engineer/Bridge Rep	\$43 - \$79
Senior Inspector*	\$25 - \$65
Inspector*	\$25 - \$65
<u>Surveying - Office Classifications</u>	
Senior Surveyor/ Survey Department Manager	\$40 - \$67
Associate Surveyor/Project Surveyor	\$37 - \$67
Survey Technician*	\$29 - \$47
<u>Surveying - Field Classifications</u>	
Party Chief*	\$37 - \$67
Chainman/Rodman*	\$29 - \$47
Overhead Rate (Includes Fringe Benefit at 40.70%)	169.80%

Other Direct Costs

Office Computer & Software	Included in Overhead
Office Phone/Cell/Fax	Included in Overhead
Reproduction	
In office	Included in Overhead
Vendor	Cost
Delivery	Cost
Mileage	Reimbursement for mileage expenses for Consultant and for any subconsultants, if applicable, shall be compensated in accordance with all of the provisions of ARTICLE VII, Cost Principles and Administrative Requirements of this Agreement.
Subconsultants	Cost
Prevailing Wage**	Cost Plus Payroll Taxes
Other Direct Costs	Cost

Notes:

*Overtime rates apply to these classifications and will typically be charged at 1.5 times the hourly rate.

**Prevailing Wage differentials may apply for Construction Inspection and Surveying Services.

Labor Costs to be invoiced based on actual hourly rate plus Overhead Rate plus Fee.

Fringe Benefit 40.70%

Overhead Rate 129.10%

Fee (Profit) 10.00%

Total Fixed Fee (Profit) as amended, shall not exceed \$254,780.

Quincy Engineering, Incorporated

Amended Exhibit C-2

Amended Cost Proposal

Phase 1

<u>Task</u>	<u>Description</u>	<u>Cost</u>
Task 1	Project Management/Meetings	\$ 129,248.00
Task 2	Aesthetic Concepts	\$ 1,084.00
Task 3	Concept Alternatives Studies	\$ 141,304.00
Task 4	Geotechnical Services	\$ -
Task 5	Initial Site Assessment (ISA)	\$ -
Task 6	Hydrology & Hydraulics	\$ -
Task 8	Initial Alternatives Screening	\$ 2,154.00
Task 9	Secondary Bridge & Roadway Alternatives Studies & Estimates (Up to Five [5] Alternatives to 15%)	\$ 98,693.00
Task 10	Secondary Alternative Screening	\$ 27,882.00
Task 11	Draft Bridge & Roadway Alternatives Studies & Estimates (Three [3] Alternatives - Advanced Planning Studies & Geometric Approval Drawings to 30%)	\$ 117,504.00
Task 12	Draft Project Approval Document	\$ 35,941.00
Task 13	Public Outreach	\$ -
Task 14	Establish Environmental and Historical Concerns	\$ -
Task 15	Environmental Analysis	\$ -
Task 16	CEQA/NEPA Documentation	\$ -
Task 17	Final Project Approval Document - Project Report (PA&ED)	\$ 6,979.00
	Consultant Subtotal	\$ 560,789.00

Subconsultants:

Mark Thomas & Company, Inc.

Task 3	Concept Alternatives Studies	\$ 11,454.00
Task 9	Secondary Bridge & Roadway Alternatives Studies & Estimates (Up to Five [5] Alternatives to 15%)	\$ 2,438.00
Task 11	Draft Bridge & Roadway Alternatives Studies & Estimates (Three [3] Alternatives - Advanced Planning Studies & Geometric Approval Drawings to 30%)	\$ 8,084.00
	Other Direct Costs	\$ 112.00
		<u>\$ 22,088.00</u>

International Bridge Technologies, Inc.

Task 3	Concept Alternatives Studies	\$	2,646.00
Task 9	Secondary Bridge & Roadway Alternatives Studies & Estimates (Up to Five [5] Alternatives to 15%)	\$	3,961.00
Task 11	Draft Bridge & Roadway Alternatives Studies & Estimates (Three [3] Alternatives - Advanced Planning Studies & Geometric Approval Drawings to 30%)	\$	16,186.00
	Other Direct Costs	\$	-
		\$	<u>22,793.00</u>

Crawford & Associates, Incorporated

Task 4	Geotechnical Services	\$	34,520.00
	Other Direct Costs	\$	490.00
		\$	<u>35,010.00</u>

Youngdahl Consulting Group, Inc.

Task 4	Geotechnical Services	\$	44,729.00
Task 5	Initial Site Assessment (ISA)	\$	2,988.00
	Other Direct Costs	\$	2,030.00
		\$	<u>49,747.00</u>

WRECO

Task 6	Hydrology & Hydraulics	\$	16,477.00
	Other Direct Costs	\$	-
		\$	<u>16,477.00</u>

Y&C Transportation Consultants, Inc.

Task 11	Draft Bridge & Roadway Alternatives Studies & Estimates (Three [3] Alternatives - Advanced Planning Studies & Geometric Approval Drawings to 30%)	\$	-
	Other Direct Costs	\$	-
		\$	<u>-</u>

AIM Consulting

Task13	Public Outreach	\$	12,980.00
	Other Direct Costs	\$	830.00
		\$	<u>13,810.00</u>

ICF International

Task 14	Establish Environmental and Historical Concerns	\$	20,022.00
Task 15	Environmental Analysis	\$	145,934.00
Task 16	CEQA/NEPA Documentation	\$	92,813.00
	Other Direct Costs	\$	18,931.00
		\$	<u>277,700.00</u>

Design Workshop

Task 2	Aesthetic Concepts	\$	17,228.00
	Other Direct Costs	\$	-
		\$	<u>17,228.00</u>
	Subconsultant Subtotal - Phase 1	\$	454,853.00
	Consultant - Other Direct Costs - Phase 1	\$	6,201.00
	Supplemental Item of Work Estimate - Task 7 -Traffic Analysis	\$	-
	Consultant - Optional Services - Phase 1	\$	131,217.00
	Total Cost Estimate - Phase 1	\$	1,153,060.00

Quincy Engineering, Incorporated

Amended Exhibit C-2

Amended Cost Proposal

Phase 2

<u>Item of Work</u>	<u>Description</u>	<u>Cost</u>
Item of Work 2.1	Project Management/Meetings	\$ 60,048.00
Item of Work 2.2	Geotechnical Exploration, Sampling, Testing, Analysis, and Recommendations	\$ 30,689.00
Item of Work 2.3	Bridge Type Selection Report	\$ 102,872.00
Item of Work 2.4	Environmental Support and Agency Permits	\$ 33,330.00
Item of Work 2.5	Drainage Report and Storm Water Management Plan and Geotechnical Peer Review	\$ 24,681.00
Item of Work 2.6	Preliminary Right-of-Way	\$ 16,080.00
Item of Work 2.7	Preliminary Bridge Modeling	\$ 46,851.00
Item of Work 2.8	Preliminary Pier Retaining Wall Design	\$ 35,125.00
Item of Work 2.9	Preliminary Design of Temporary Road Realignment	\$ 49,337.00
Consultant Subtotal		\$ 399,013.00

Subconsultants:

Crawford & Associates, Incorporated

Item of Work 2.2	Geotechnical Exploration, Sampling, Testing, Analysis, and Recommendations	\$ 1,061,254.00
		\$ 1,061,254.00

Youngdahl Consulting Group, Inc.

Item of Work 2.2	Geotechnical Exploration, Sampling, Testing, Analysis, and Recommendations	\$ 59,328.00
		\$ 59,328.00

Armeni Consulting Services, LLC

Item of Work 2.3	Bridge Type Selection Report	\$ 60,000.00
		\$ 60,000.00

WRECO

Item of Work 2.5	Drainage Report and Storm Water Management Plan and Geotechnical Peer Review	\$ 94,745.00
		\$ 94,745.00

ICF Jones & Stokes, Inc.

Item of Work 2.4	Environmental Support and Agency Permits	\$ 62,861.00
		<u>\$ 62,861.00</u>

Parsons Brinckerhoff, Inc.

Item of Work 2.1	Project Management/Meetings	\$ -
		<u>\$ -</u>

International Bridge Technologies, Inc.

Item of Work 2.7	Preliminary Bridge Modeling	\$ 96,019.00
		<u>\$ 96,019.00</u>

Subconsultant Subtotal - Phase 2	\$ 1,434,207.00
Consultant - Other Direct Costs - Phase 2	\$ 257,292.00
Consultant - Optional Services - Phase 2	\$ 99,991.00
Total Cost Estimate - Phase 2	\$ 2,190,503.00

Quincy Engineering, Incorporated

Amended Exhibit C-2

Amended Cost Proposal

Phase 3

<u>Item of Work</u>	<u>Description</u>	<u>Cost</u>
Item of Work 3.1	Project Management/Meetings	\$ 128,843.00
Item of Work 3.2	Bridge and Roadway Design and 65% Plans	\$ 451,645.00
Item of Work 3.3	Right-of-Way Engineering	\$ 19,882.00
Item of Work 3.4	Utility Coordination/Design	\$ 14,922.00
Item of Work 3.5	Independent Design Check	\$ 389,606.00
Item of Work 3.6	Technical Special Provisions	\$ 81,860.00
Item of Work 3.7	Construction Quantities and Estimates	\$ 192,247.00
Item of Work 3.8	Quality Review and Constructability Review	\$ 99,314.00
Item of Work 3.9	Submittal of 95% (Draft) PS&E	\$ 80,781.00
Item of Work 3.10	Submittal of 100% (Final) PS&E	\$ 83,577.00

Consultant Subtotal \$ 1,542,677.00

Consultant - Other Direct Costs - Phase 3 \$ 262.00

Consultant - Optional Services - Phase 3 \$ 84,190.00

Consultant Total - Phase 3 \$ 1,627,129.00

Subconsultants:

SYSTRA International Bridge Technologies, Inc.

Item of Work 3.2	Bridge and Roadway Design and 65% Plans	\$ 1,172,691.00
Optional Tasks		\$ 20,689.00
		<u>\$ 1,193,380.00</u>

WRECO

Item of Work 3.2	Bridge and Roadway Design and 65% Plans	\$ 57,013.00
Optional Tasks		\$ 80,682.00
		<u>\$ 137,695.00</u>

Mark Thomas & Company, Inc.

Optional Tasks	\$ 54,317.00
	<u>\$ 54,317.00</u>

Y&C Transportation Consultants, Inc.

Item of Work 3.2 Bridge and Roadway Design and 65% Plans	\$ 25,084.00
	<u>\$ 25,084.00</u>

Cadre Design Group, Inc.

Item of Work 3.2 Bridge and Roadway Design and 65% Plans	\$ 66,315.00
	<u>\$ 66,315.00</u>

Armeni Consulting Services, LLC

Item of Work 3.7 Construction Quantities and Estimates	\$ 10,000.00
	<u>\$ 10,000.00</u>

Subconsultant Subtotal - Phase 3	\$ 1,486,791.00
Total Cost Estimate - Phase 3	\$ 3,113,920.00
Amended Total Cost Estimate - Phase 1	\$ 1,153,060.00
Amended Total Cost Estimate - Phase 2	\$ 2,190,503.00
Total Cost Estimate - Phase 1, Phase 2, & Phase 3	\$ 6,457,483.00