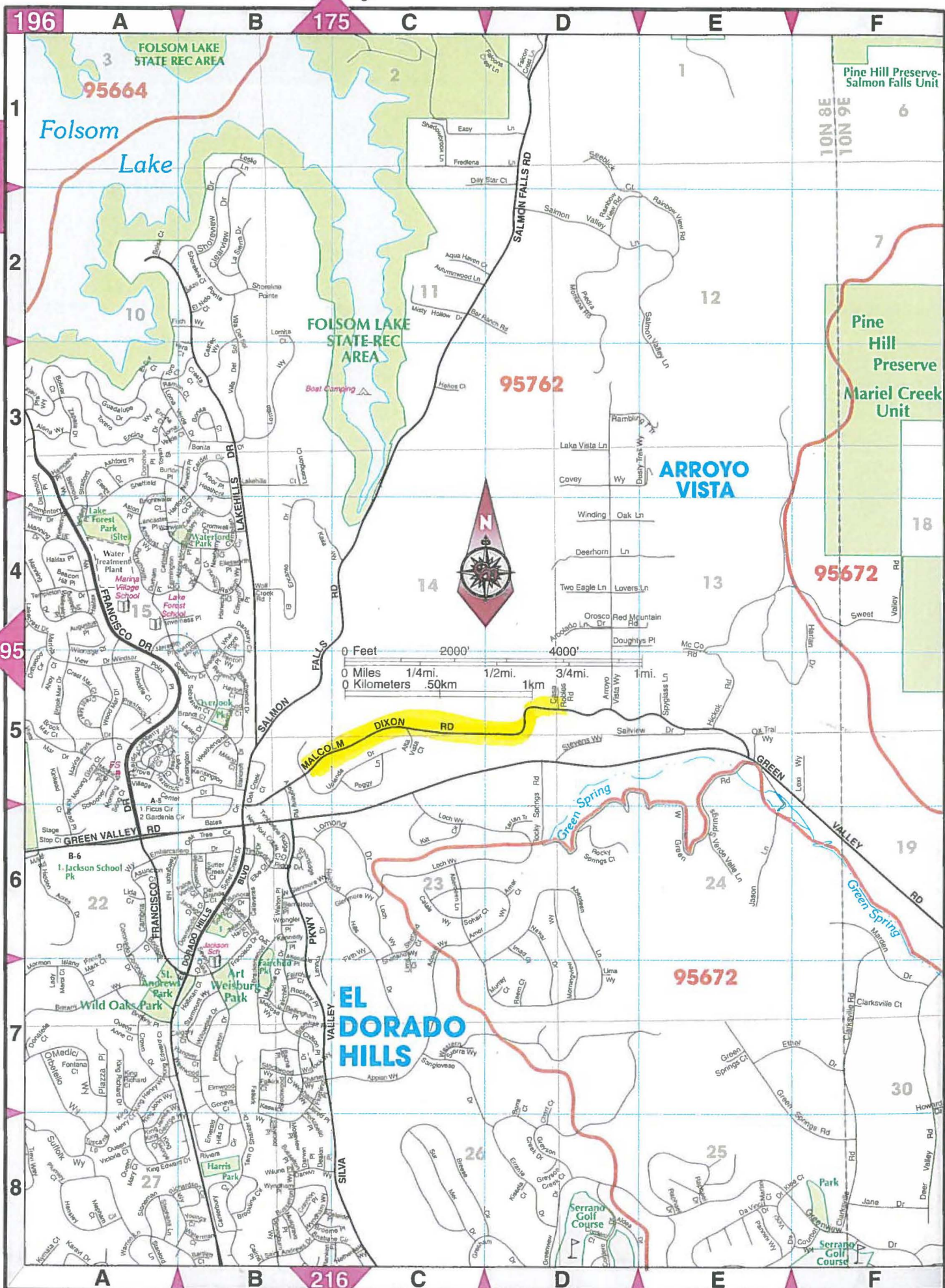


EL DORADO COUNTY

See Page 195

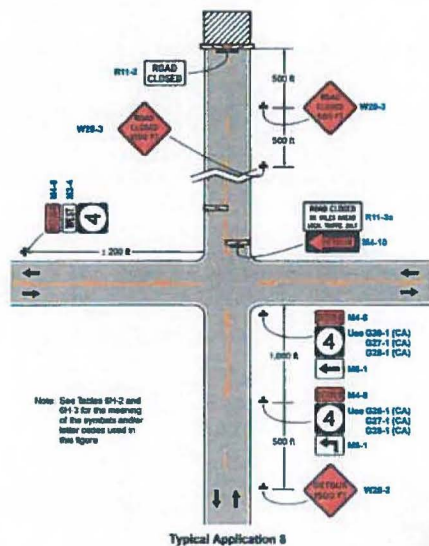


MALCOLM DIXON ROAD ROAD CLOSURE PLAN SHEET 1 OF 2 EL DORADO COUNTY, CALIFORNIA SCALE: N/A APRIL, 2016

California MUTCD 2014 Edition
(FHWA's MUTCD 2009 Edition, including Revisions 1 & 2, as amended for use in California)

Page 1154

Figure 6H-8. Road Closure with an Off-Site Detour (TA-8)



Typical Application 8

Chapter 6H - Typical Applications
Part 6 - Temporary Traffic Control

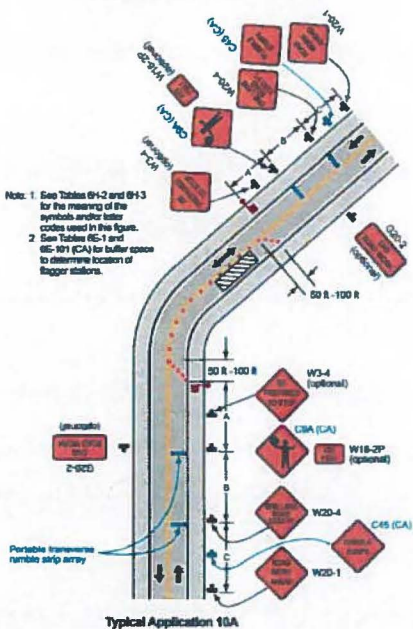
November 7, 2014

TA-8

California MUTCD 2014 Edition
(FHWA's MUTCD 2009 Edition, including Revisions 1 & 2, as amended for use in California)

Page 1160

Figure 6H-10A (CA). Lane Closure on Two-Lane Road Using Flaggers (TA-10A)
Using Portable Transverse Rumble Strips



Typical Application 10A

Chapter 6H - Typical Applications
Part 6 - Temporary Traffic Control

November 7, 2014

TA-10A OR STD. PLAN T-13

LEGEND

Table 6H-2. Meaning of Symbols on Typical Application Diagrams

	Arrow board		Detour vehicle
	Arrow board support or trailer (shown facing down)		Sign shown being left
	Changeable message sign or support trailer		Surveyor
	Chaining device		Temporary barrier
	Crash cushion		Temporary barrier with warning light
	Direction of temporary traffic control		Traffic or pedestrian signal
	Direction of traffic		Two-way stop sign
	Flagger		Type 2 barricade
	High-beat warning device (flag box)		Warning light
	Longitudinal chaining device		Work space
	Luminaire		Work vehicle
	Pavement markings that should be removed for a long-term project		

Malcolm Dixon Road Proposed Temporary Roadway Closure Plan Road Closure Work Description and Temporary Traffic Control (TCC)

The Wilson Estates TM 14-1515 is conditioned to construct a sewer line extension from an existing sewer manhole located at Station 10+50 Uplands Court, a minor street, to a newly constructed manhole located to the south at Station 12+11c that serves Malcolm Dixon Road Station 10+00 (Segment A). From there the line will be extended west on Malcolm Dixon Road, a low traffic volume two-lane road, to Station 36+52.1 for a total installed length of 2,565 feet (Segment B).

Segment A TCC

The Uplands Court, the Segment A will be constructed using the California MUTCD Figure 6H-10A (CA) (TA-10A) or Standard Plan T-13 for LANE CLOSURE ON TWO-LANE ROAD USING FLAGGERS. When the work approaches the intersection of Uplands Court and Malcolm Dixon Road the TCC will comply with MUTCD Figure 6H-27 (TA-27) CLOSURE AT THE SIDE OF AN INTERSECTION.

Segment B TCC

A portion of Segment B, Station 10+00, manhole #0 to Station 10+50 will comply with TA-27. Once the sewer is installed to Station 10+50, the roadway will be closed to through traffic between the hours of 9:00 AM and 3:30 PM. The planned roadway closure will comply with Figure 6H-8 (TA-8) ROAD CLOSURE WITH AN OFF-SITE DETOUR. Between Station 10+50 and Station 30+84, manhole #17 the proposed sewer line will be placed at a depth of approximately 5 Feet. Moreover, 8 manholes will be installed. Estimated site cut, trench excavation, sewer installation, sewer backfill and pavement replacement production is estimated to be 200 Feet per day. A moving 300 feet of the roadway will be closed on a daily basis (typical 300' closed section) during the course of the sewer installation operations. Between Station 30+84 and Station 36+52 the sewer depth increases from 5 Feet to a maximum depth of 18.2 Feet plus the installation of 2 manholes with the deepest manhole being 60 inches in diameter. Production rates will slow in this area to 100 Feet per day on average including the deep manhole#15. Shoring techniques will be employed that will slow production as noted above. Overall the total construction time for sewer installation and daily road closure is anticipated to be 15 working days. Two changeable message signs will be placed where shown on the Green Valley Road that will alert the motoring public of the planned roadway closure including the dates and time. There will be no work on the weekends.

Defined Local traffic within the closed roadway will be able to use the road with the exception of the actual closed segment (typical 300' closed section). On any given day residents that would be directly impacted by the typical 300' closed section would be safely escorted in their vehicles through the typical 300' closed section while the construction is occurring between the hours of 9:00 AM to 3:30 PM when the roadway reopens. The Contractor will maintain safe and convenient access and will coordinate with the affected resident(s) at all times. The Alta Vista Court homeowners will be escorted access also. Since no more than 300 Feet of roadway will be closed at any one time the Contractor will ensure that the local traffic will continue to have convenient access to the Malcolm Dixon Road. However the roadway will be closed to thru traffic where shown.

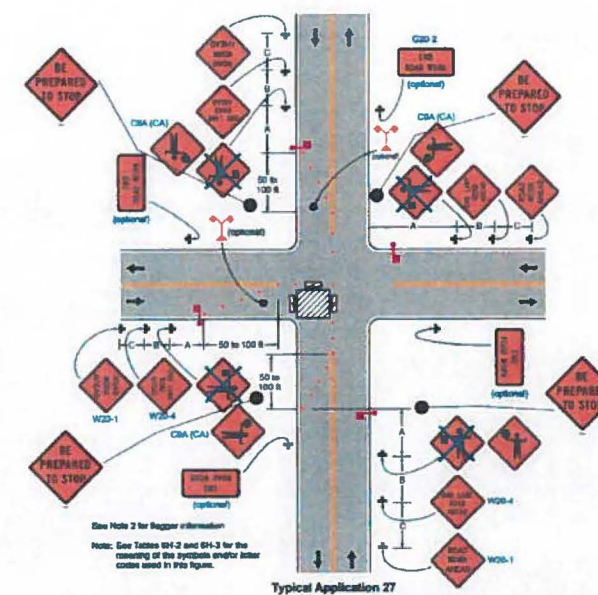
Remainder Work

The roadway closure plan is limited to sewer installation activities in Segment B as noted here-in-before. Subsequent activities that are performed in both Segment A and Segment B including but not limited to pavement grinding, pavement overlay, adjustment of manholes to grade, striping, and driveway encroachments will be done in accordance with Figure 6H-10A (TA-10A) or Standard Plan T-13 LANE CLOSURE ON TWO-LANE ROAD USING FLAGGERS.

California MUTCD 2014 Edition
(FHWA's MUTCD 2009 Edition, including Revisions 1 & 2, as amended for use in California)

Page 1190

Figure 6H-27. Closure at the Side of an Intersection (TA-27)



Typical Application 27

Chapter 6H - Typical Applications
Part 6 - Temporary Traffic Control

November 7, 2014

TA-27

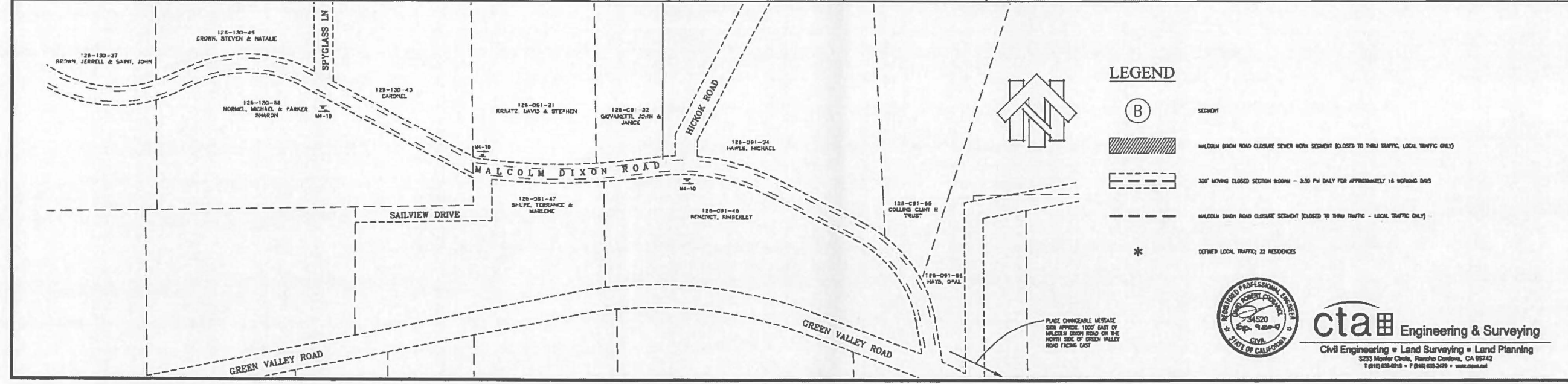
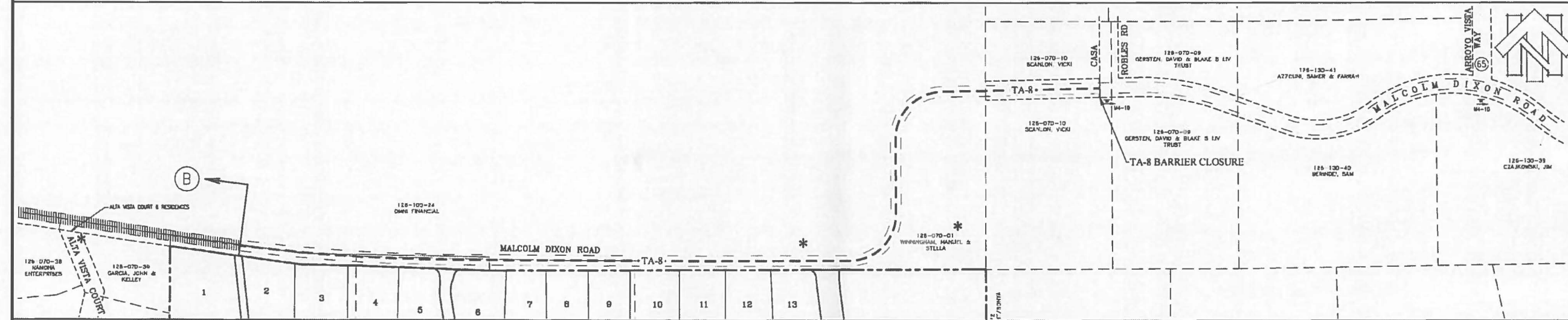
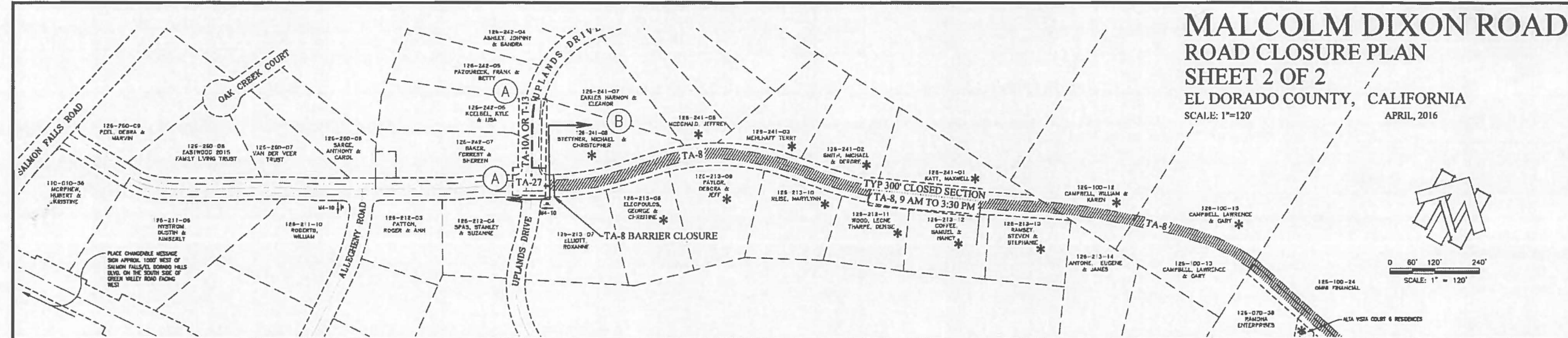


cta Engineering & Surveying
Civil Engineering • Land Surveying • Land Planning
3233 Monitor Circle, Rancho Cordova, CA 95742
1 (916) 838-0391 • 1 (916) 838-3470 • www.cta.com

MALCOLM DIXON ROAD ROAD CLOSURE PLAN

SHEET 2 OF 2

EL DORADO COUNTY, CALIFORNIA
SCALE: 1"=120'
APRIL, 2016



- LEGEND**
- (B) SEGMENT
 - MALCOLM DIXON ROAD CLOSURE SEWER WORK SEGMENT (CLOSED TO TRAFFIC, LOCAL TRAFFIC ONLY)
 - 300' MOVING CLOSED SECTION 8:00AM - 3:30 PM DAILY FOR APPROXIMATELY 16 WORKING DAYS
 - MALCOLM DIXON ROAD CLOSURE SEGMENT (CLOSED TO TRAFFIC - LOCAL TRAFFIC ONLY)
 - * DETOUR LOCAL TRAFFIC TO RESIDENCES

PLACE CHANGEABLE MESSAGE SIGN APPROX. 1000' EAST OF MALCOLM DIXON ROAD ON THE NORTH SIDE OF GREEN VALLEY ROAD FACING EAST



cta Engineering & Surveying
Civil Engineering • Land Surveying • Land Planning
3223 Mosher Circle, Rancho Cordova, CA 95742
T (916) 858-0710 • F (916) 858-2470 • www.cta.com