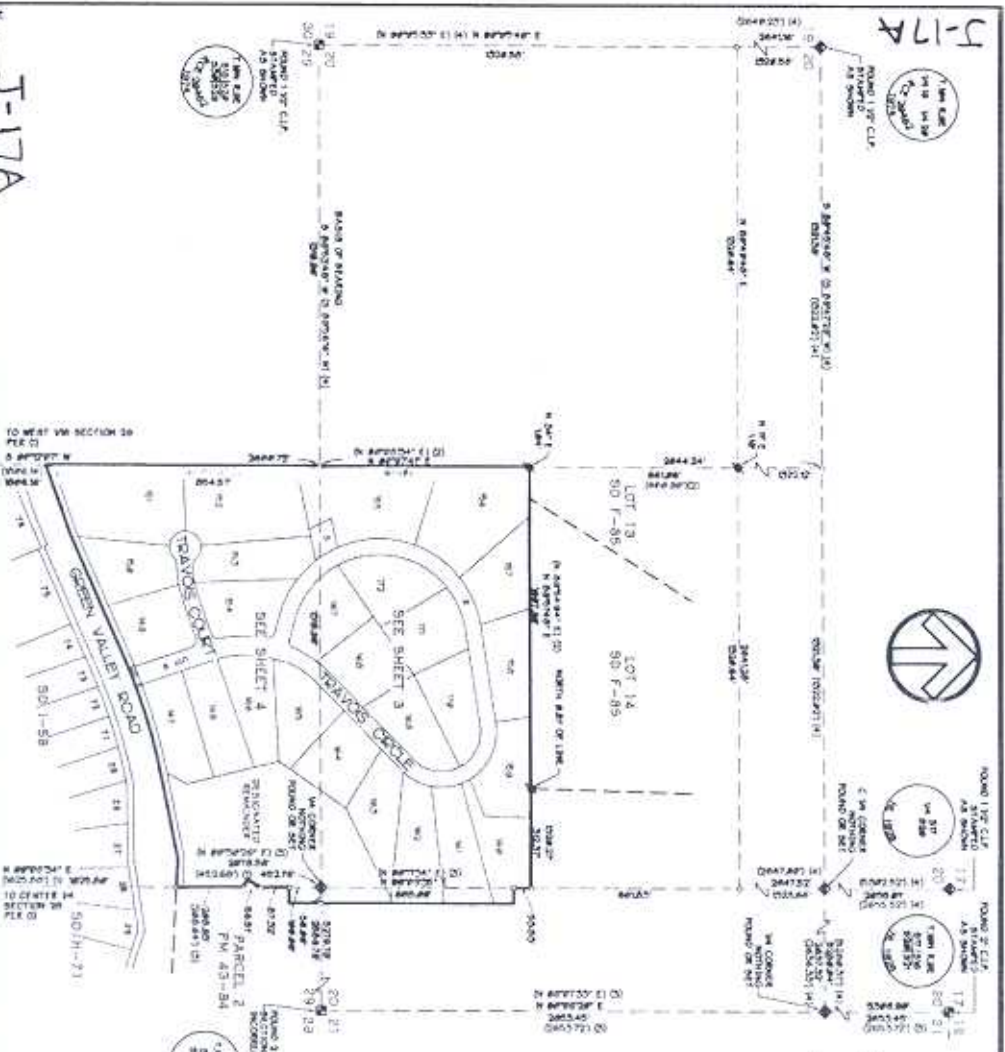


J-17A

J-17A



Pioneer Place Unit 4
 A PORTION OF THE S 1/2 OF THE S 1/2 OF SECTION 28
 AND THE N 1/2 OF THE N 1/2 OF SECTION 28
 T. 17 N., R. 8 E., MD. 11
 COUNTY OF EL DORADO
 STATE OF CALIFORNIA
 SEPTEMBER, 2005
 SHEET 2 of 4
 F-2889

CARLTON ENGINEERING INC.

LEGEND

- DIRECTION POINT - SURVEY POINT OR SET
- SET 1/2\"/>

BASIS OF BEARINGS

THE BEARINGS OF THIS PLAN TO SECTION 28, T17N, R8E, MD11, AND THE BEARINGS OF ROAD 1 1/2\"/>

REFERENCES

- 1. 1995 RECORD MAP 20052
- 2. 1995 RECORD MAP 20052
- 3. 1995 RECORD MAP 20052

NOTES

1. THIS PLAN IS A REVISION OF THE PLAN FOR THE PIONEER PLACE UNIT 4, SHEET 1 OF 4, PREPARED BY CARLTON ENGINEERING INC. IN 2005. THE PLAN IS BEING REVISIONED TO CORRECT THE BEARINGS OF THE TRAVOIS VALLEY ROAD AND THE BEARINGS OF THE TRAVOIS COURT AND TRAVOIS CIRCLE.

