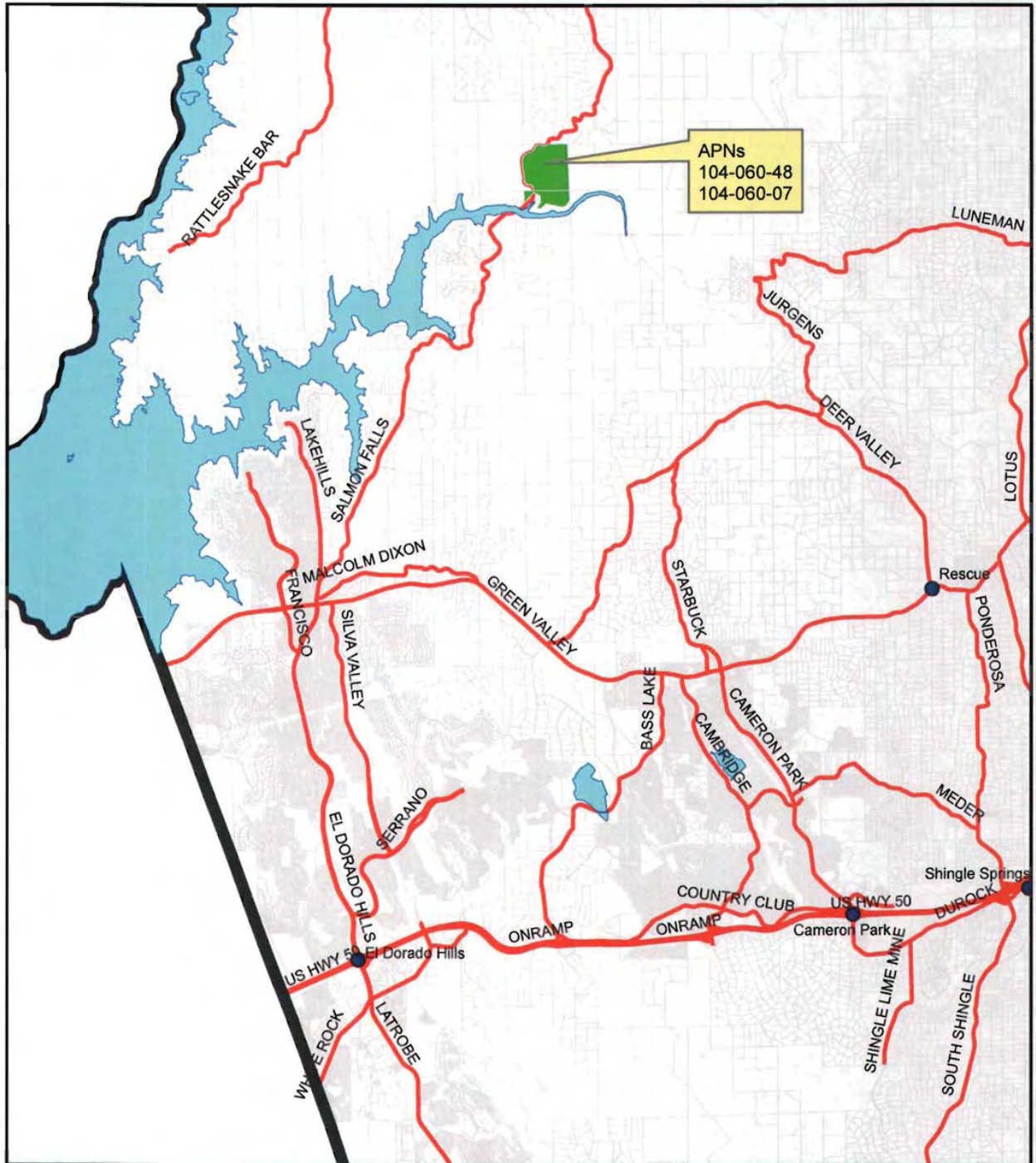


Exhibit A: Location Map



APNs
104-060-48
104-060-07

- PLACENAMES
- lakes
- EDC Boundary
- major_roads
- curprcl



S13-0010/Salmon Falls Trailhead
Prepared By Aaron Mount

SECS. 13, 14, 15, 22, 23, & 24 T.11N. R.8E., M.D.M.

104:06

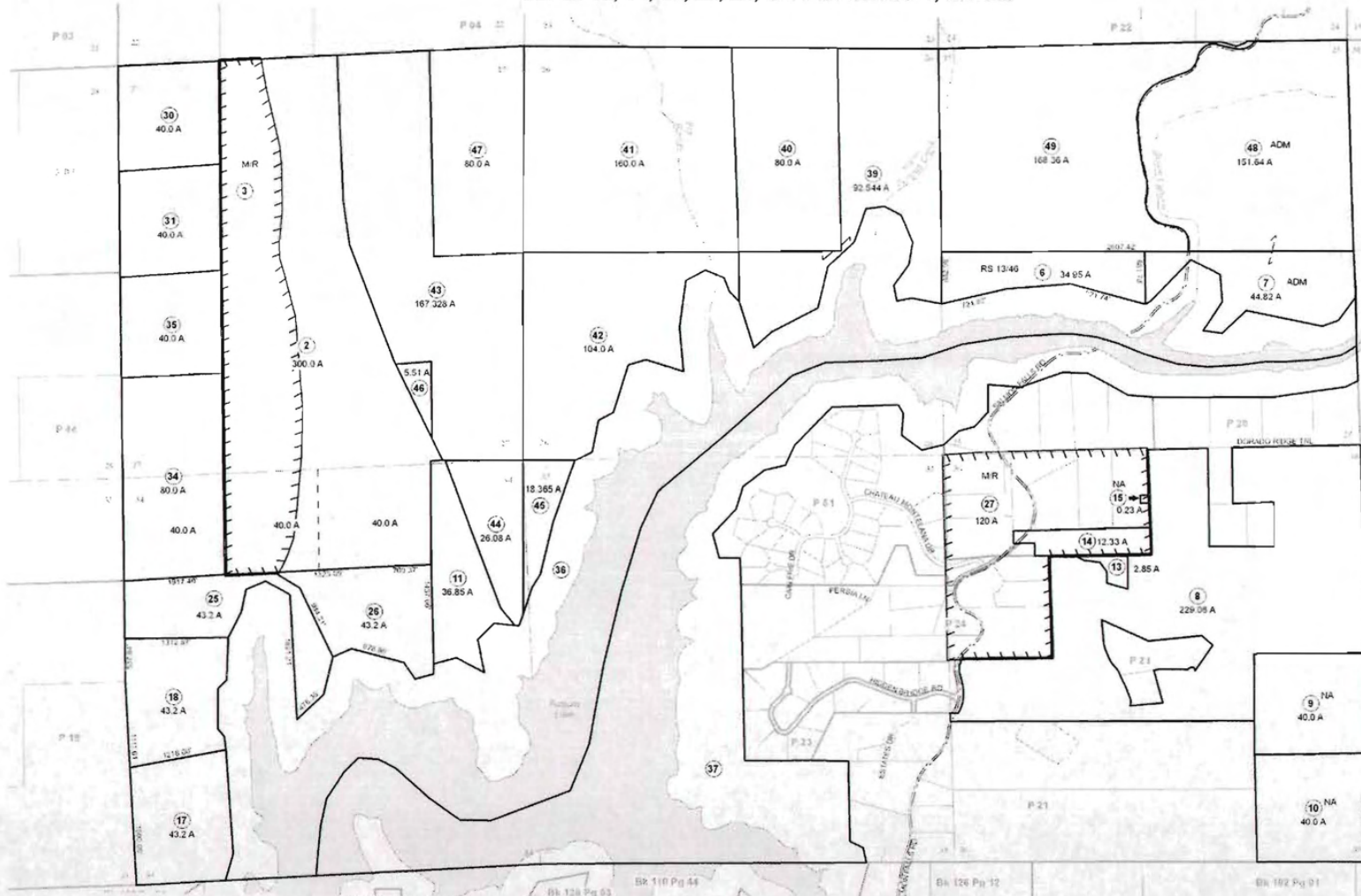


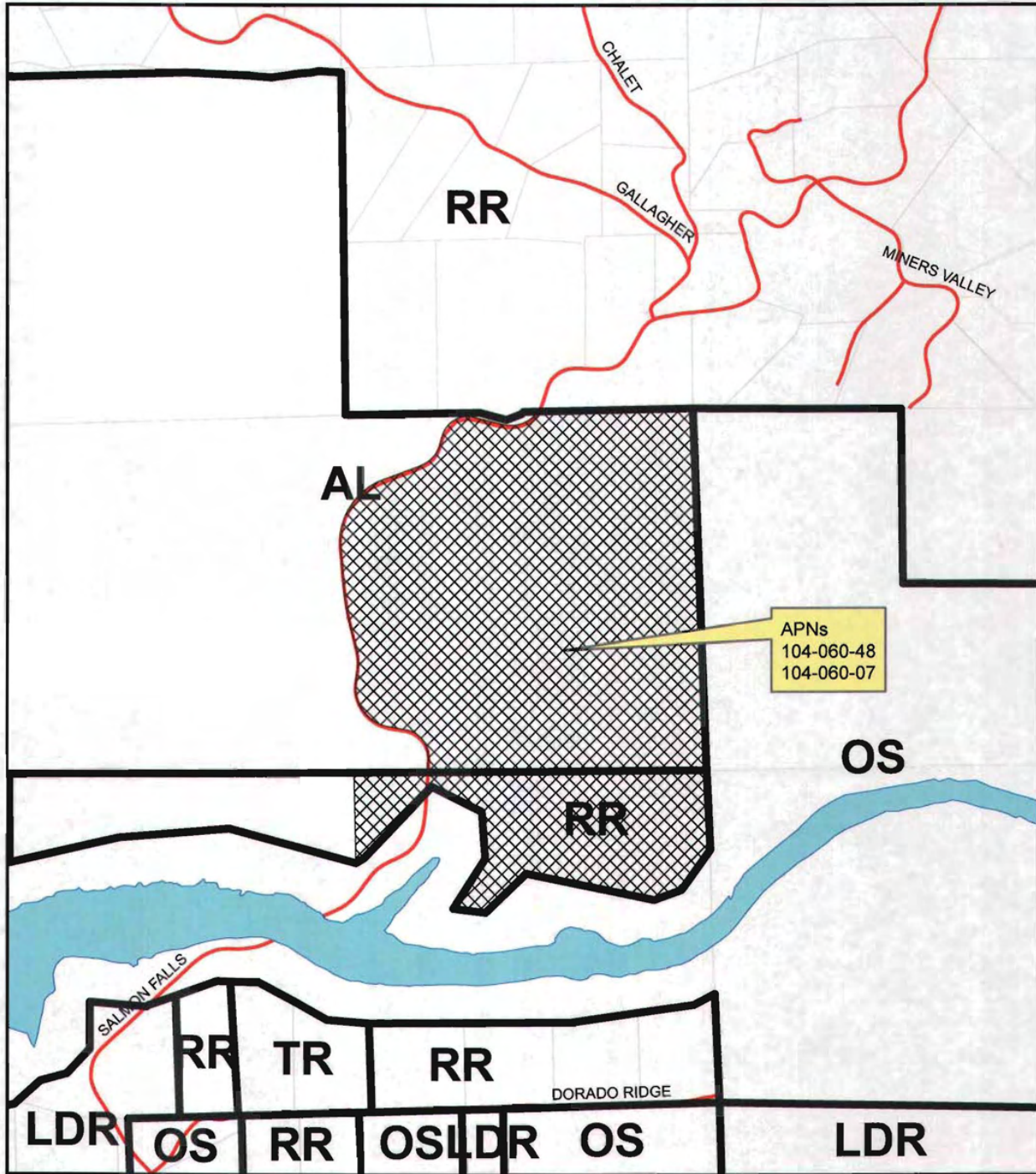
EXHIBIT B


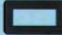


THIS MAP IS NOT A SURVEY. It is prepared by the El Dorado Co. Assessor's office for assessment purposes only. Area calculations and characteristics are not guaranteed. Users should verify items such as dimensions and acreage.

Acreages Are Estimates

Adjacent Map Pages Refer to Gray Text Assessor's Block Numbers Shown in Ellipses Assessor's Parcel Numbers Shown in Circles

Exhibit C: General Plan Map

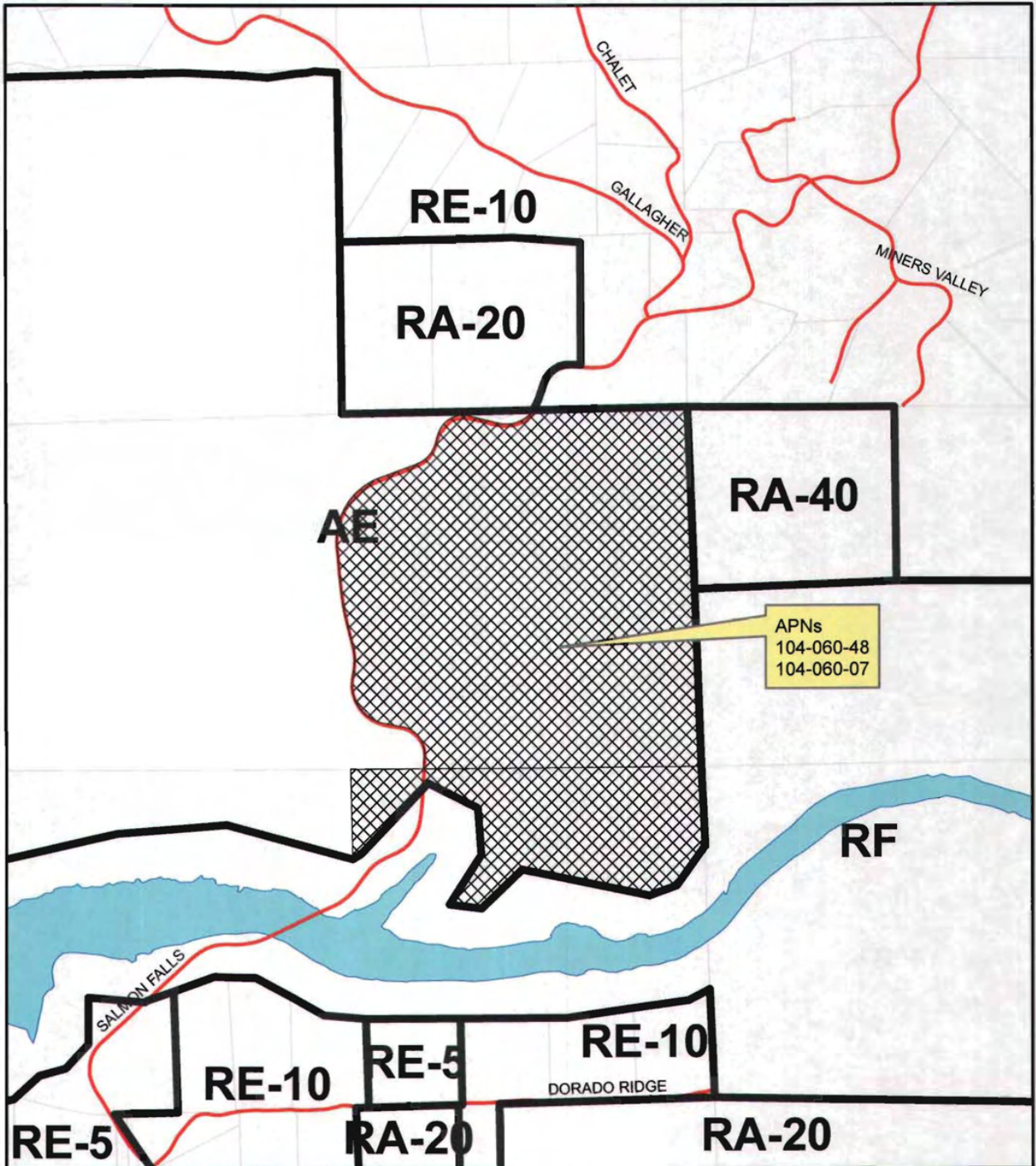


	lakes
	ludesign
	gpsroads
	currprcl



S13-0010/Salmon Falls Trailhead
Prepared By Aaron Mount

ExhibitD: Zone District Map



- zonedes
- gpsroads
- lakes
- currprcl



S13-0010/Salmon Falls Trailhead
Prepared By Aaron Mount

0 440 880 1,760 Feet

EXHIBIT E

Salmon Falls Ranch Trailhead and Trail Facility Detailed Description of the Proposed Use

The applicant, the American River Conservancy proposes to grade a parking lot, access road and trail at the western terminus of the South Fork American River Trail on 152 acres immediately east of Salmon Falls Road and ¼ mile north of the Salmon Falls bridge crossing over the South Fork American River.

The purpose of the project is to provide expanded parking and access for equestrians and other users of the trail. Currently, the parking lot at Skunk Hollow administered by State Parks cannot accommodate trucks with equestrian trailers. Consequently the western portion of the South Fork American River Trail is closed to equestrians. The proposed parking lot would allow equestrians full access and use of the western portion of the trail and provide expanded parking for hikers and mountain bike trail users as well.

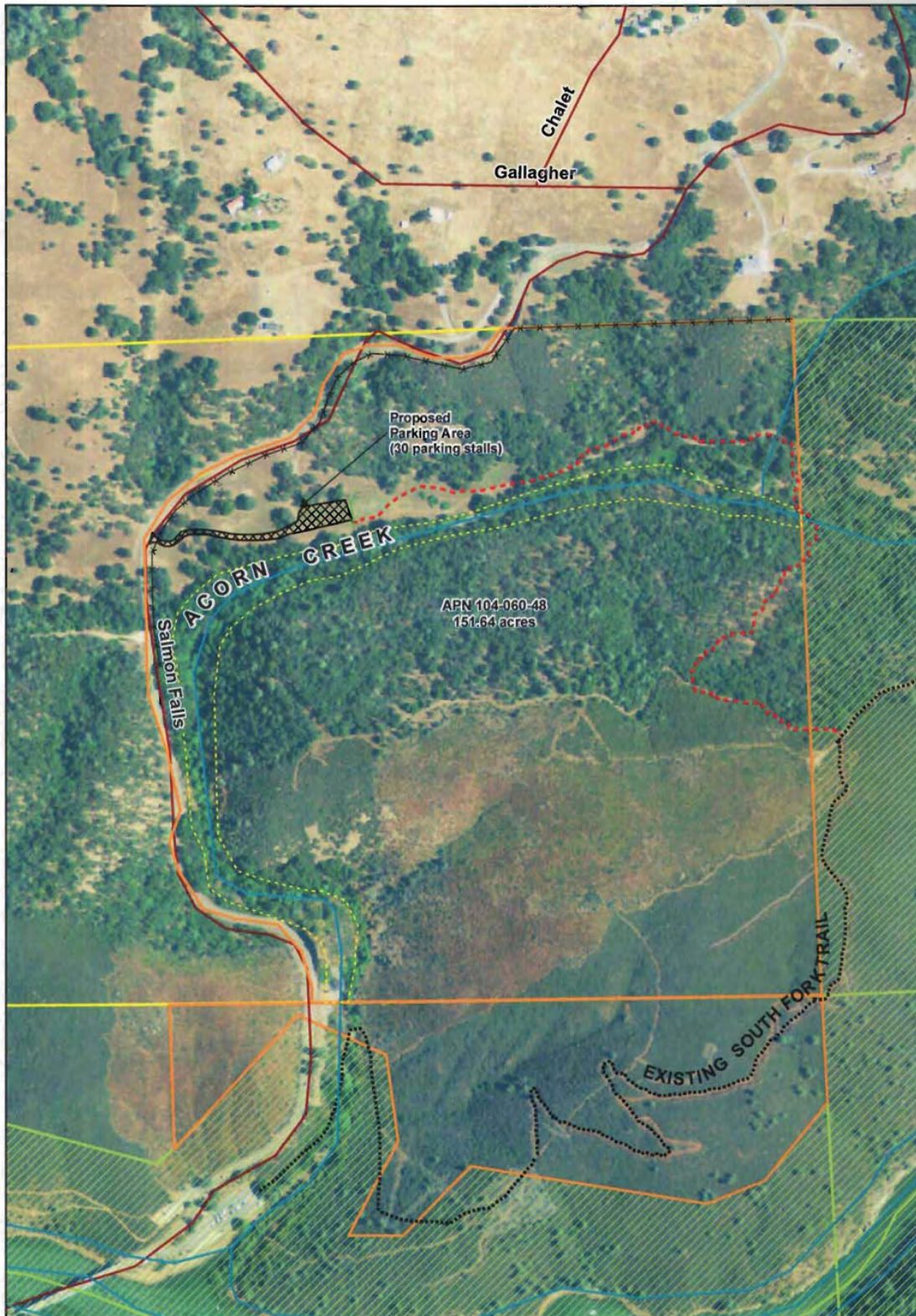
The proposed use is a trailhead and parking lot for trail users (hikers, equestrians and mountain bikers). The parking lot will accommodate approximately thirty car, truck and trailer spaces. The parking lot will be available to the public year-round from dawn to dusk with overnight parking by advance permission only. The parking lot and trailhead facility will be monitored and managed by ARC's Stewardship Manager with assistance from a trained volunteer corps.

The trailhead at the eastern end of the parking lot will contain a kiosk with extensive trail map, safety, recreation and natural resource information.

13 JUN 17 PM 2:35
RECEIVED
PLANNING DEPARTMENT

S 13-0010

EXHIBIT F



**AMERICAN RIVER
CONSERVANCY**



Preserving Rivers and Land for Life

**Salmon Falls Ranch
Trail and Trailhead Facility
SITE PLAN**

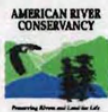
**American River Conservancy
P.O. Box 562
Coloma, CA 95613**

- Salmon Falls Ranch Project Site
- Proposed Parking & Driveway (18,000 sq.ft.)
- Proposed Trail
- Existing Fence
- Proposed Fence
- High Water Mark (100-year)
- Public Land (BLM or U.S.B.R.)



1 inch = 375 feet

Aerial Image: USDA NAIP 2009
Parcel Data: EDC Assessor 2011
Map Date: June 5, 2013



**Salmon Falls Ranch
Trail and Trailhead Facility
SITE PLAN DETAIL**

- Salmon Falls Ranch Project Site
- Proposed Parking & Driveway (18,000 sq.ft.)
- Proposed Trail
- Existing Fence
- Proposed Fence
- High Water Mark (100-year)

1 inch = 62.5 feet



American River Conservancy
P.O. Box 562
Coloma, CA 95613

Aerial Image: ESRI World Imagery 2013
Parcel Data: EDC Assessor 2011
Map Date: June 5, 2013

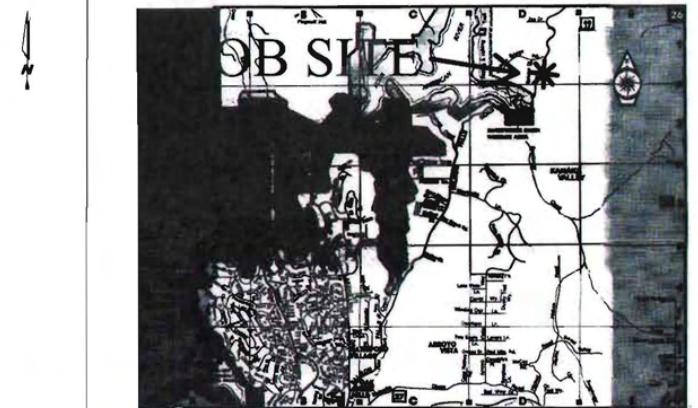
EXHIBIT G

AMERICAN RIVER CONSERVANCY DRIVEWAY AND PARKING AREA PLAN

INDEX	
Sheet 1 - Cover Sheet	
Sheet 2 - Notes/Details	
Sheet 3 - Plot/Grading Plan	
Sheet 4 - Plot/Grading Plan	
Sheet 5 - Site Plan/Driveway Profile	
Sheet 6 - Erosion Notes/Detail	

CONSTRUCTION OR EXISTING	
DATE	11/20/06
SHEET	1 OF 6

VICINITY MAP
NTS



PROJECT INFORMATION	
SALMON FALLS ROAD PILOT HILL, CA	
APN: 104-060-48	151.64 AC

DATE OF SURVEY	11/20/06
PROJECT NUMBER	104-060-48
PROJECT NAME	AMERICAN RIVER CONSERVANCY DRIVEWAY AND PARKING AREA PLAN
OWNER	AMERICAN RIVER CONSERVANCY
DESIGNED BY	RCE
DRAWN BY	TERRY
CHECKED BY	
DATE	
REVISIONS	
PERMIT #	

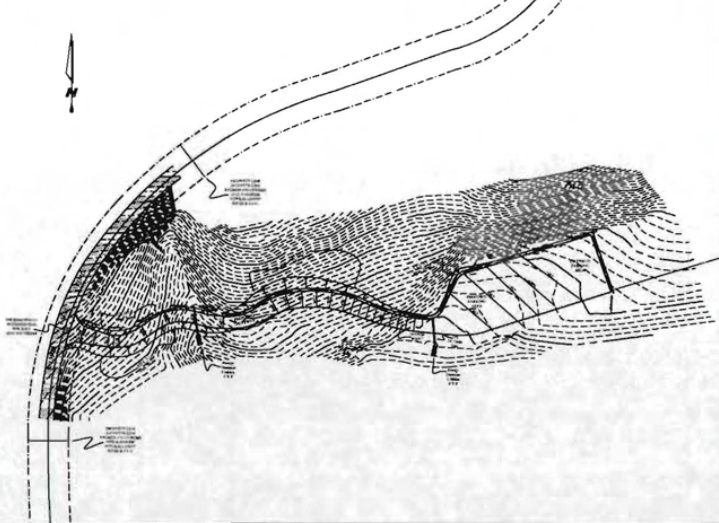
DESCRIPTION	
DATE	
REVISIONS	

OWNER INFORMATION
AMERICAN RIVER CONSERVANCY
P.O. BOX 562
COLOMA, CA 95613

ABBREVIATIONS	
AB	AGGREGATE BASE
AC	ASPHALT
APN	ASSESSORS PARCEL NUMBER
BC	BEGIN CURVE
BW	BOTTOM WALL
CL	CENTERLINE
CMP	CORRUGATED METAL PIPE
CO	CLEAN OUT
CONC	CONCRETE
CP	CONCRETE PIPE
CPEP	CORRUGATED POLYETHYLENE PIPE
DI	DRAIN INLET
(E)	EXISTING
EC	EDGE CURVE
EL	ELEVATION
EP	EDGE OF PAVEMENT
ESMT	EASEMENT
(F)	FUTURE
FF	FINISHED FLOOR
FG	FINISHED GRADE
FL	FLOWLINE
FP	FINISHED PAVEMENT
GB	GRADE BOX
GT	GRATE
HYD	FIRE HYDRANT
LPG	PROPANE
MAX	MAXIMUM
MH	MANHOLE
MIN	MINIMUM
NTS	NOT TO SCALE
OC	ON CENTER
(P)	PROPOSED
PL	PROPERTY LINE
PP	POWER POLE
PT	PRESSURE TREATED WOOD
PUE	PUBLIC UTILITY EASEMENT
R	RADIUS
R/W	RIGHT OF WAY
SD	STORM DRAIN
SF	SQUARE FOOT
SL	SETBACK LINE
SS	SANITARY SEWER
SSMH	SANITARY SEWER MANHOLE
STA	STATION
TC	TOP OF CURB
TW	TOP WALL
TYP	TYPICAL
VC	VAULT - COMMUNICATION
VE	VAULT - ELECTRICAL
WM	WATER METER
YDS	YARDS

LEGEND	
	BENCH MARK (assumed elevation)
	Computed Point - Nothing Found
	FOUND: Rebar, Tagged or Capped
	FOUND: 3/4" Capped Iron Pipe (CIP)
	FOUND: 1 1/2" Capped Iron Pipe (CIP)
	FOUND: 2" Capped Iron Pipe (CIP)
	Fonn Line
	Fire Hydrant
	North Arrow
	Tree
	Tree (To Be Removed)
	Utility Pole
	Water Meter
	Wall
	Ground Elevation
	Ground Contour

PROJECT LAYOUT
SCALE: 1"=40'



GEOLOGICAL INFORMATION (IF REQUIRED)	
GEOLOGICAL REPORT - TITLE & DATE:	
GEOLOGICAL ENGINEER NAME:	
GEOLOGICAL ENGINEER ADDRESS:	
GEOLOGICAL ENGINEER PHONE NUMBER:	

UTILITY STATEMENT

THE UNDERGROUND UTILITIES SHOWN ON THIS PLAN HAVE BEEN LOCATED FROM FIELD DATA AND/OR EXISTING DRAWINGS. THE UNDERSIGNED WARRANTS THAT THE UNDERGROUND UTILITIES SHOWN ON THIS PLAN ARE ACCURATE TO THE BEST OF HIS KNOWLEDGE AND BELIEF. THE UNDERSIGNED WILL NOT BE RESPONSIBLE FOR ANY DAMAGE TO OR INTERFERENCE WITH ANY UTILITIES SHOWN ON THIS PLAN OR FOR ANY DAMAGE TO OR INTERFERENCE WITH ANY UTILITIES NOT SHOWN ON THIS PLAN. THE UNDERSIGNED WILL NOT BE RESPONSIBLE FOR ANY DAMAGE TO OR INTERFERENCE WITH ANY UTILITIES SHOWN ON THIS PLAN OR FOR ANY DAMAGE TO OR INTERFERENCE WITH ANY UTILITIES NOT SHOWN ON THIS PLAN.

SURVEY STATEMENT

NOTE: THIS PLAN IS NOT AN OFFICIAL BOUNDARY SURVEY OF THE LAND SHOWN HEREON AND SHOULD NOT BE RELIED ON FOR ANY PURPOSE OTHER THAN OBTAINING A BUILDING PERMIT AND/OR PROVIDING CONSTRUCTION AND GENERAL LOCATION OF EXISTING AND/OR PROPOSED STRUCTURES, CURBS, TIES AND UTILITIES. ALL BOUNDARY MARKERS, PROPERTY LINES AND EASEMENTS, IF SHOWN, ARE FOR IDENTIFICATION PURPOSES ONLY AND A RE-LOCATION USING EXISTING COUNTY RECORDED MAPS AND/OR DOCUMENTS, GROUND CONTROL POINTS AND A COMPUTERIZED INTERSECTION OF THE ACTUAL GROUND CONTOURS, AS WELL AS THE CONTOUR REPRESENTED HEREON MAY DIFFER FROM THE ACTUAL GROUND CONTOUR. THE ACTUAL LOCATION OF TREES SHOWN ON THIS PLAN PRIOR TO CONSTRUCTION THEREON ARE APPROXIMATE. VERTICAL DATUM IS BASED ON ASSUMED ELEVATION, UNLESS OTHERWISE NOTED, AND IS NOT TIED TO ANY ESTABLISHED BENCHMARK.

THIS PLAN WAS DESIGNED UNDER THE SUPERVISION OF:

NAME: RCE # _____
DATE: _____

EXHIBIT H-1

EXHIBIT I-1



Location of proposed driveway

Existing signage along Salmon Falls Road.



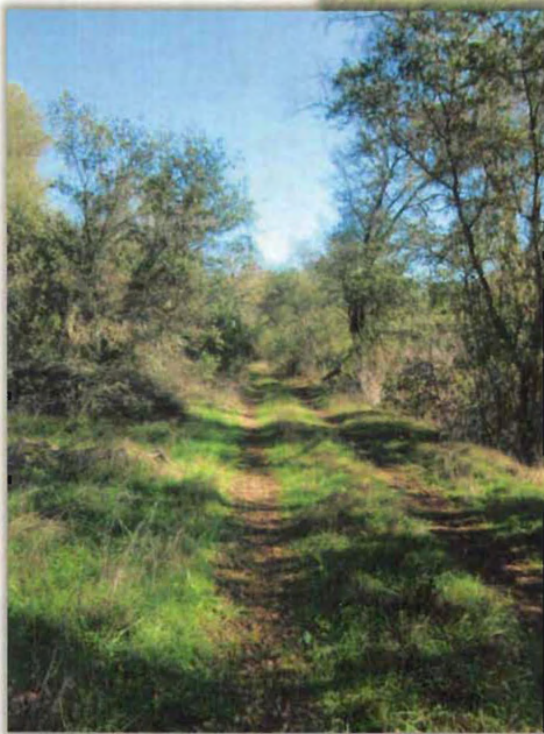
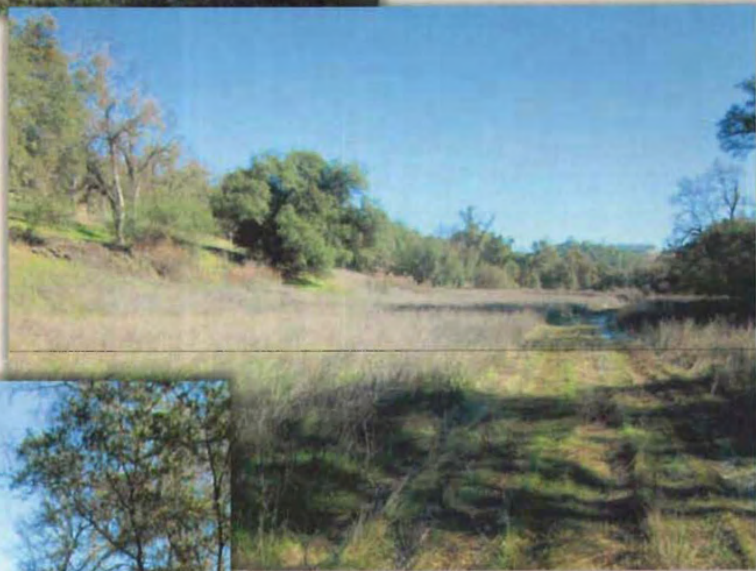
Proposed driveway location at first culvert placement. 2 oak trees (right side of photo) will be removed.

EXHIBIT I-2



Proposed driveway location.

Proposed gravel parking area location.



Proposed trail alignment along existing path/road.

EXHIBIT J

Salmon Falls Trail and Trailhead Facility Preliminary Landscape Plan Narrative and Plant Selection

The proposed project includes an 18,000 sq. ft. parking area as part of the trailhead facility that will be used by the public to access the South Fork American River Trail. Landscape plants will be locally sourced and are naturally drought-resistant. Plants will be installed between November and February following parking area completion. Water for the plantings during the initial spring and summer season will be completed by ARC volunteers and staff, using a 300-gallon water tank and truck with a hose attachment. Maintenance of new plantings for the first 3 years following establishment will be completed by ARC staff and volunteers.

All trees and shrubs will be planted from 1-5 gallon seedling stock, using weed mats and mulch to control weeds. Trees and shrubs will be installed with protective cages to ensure that deer and rabbits do not damage new plantings. Perennial forbs and grasses will be grouped in order to provide an aesthetically pleasing foreground and contrast. All perennial forbs listed have been chosen due to their suitability to the local climate and soils, drought-tolerance and their ability to provide habitat for native pollinator species.

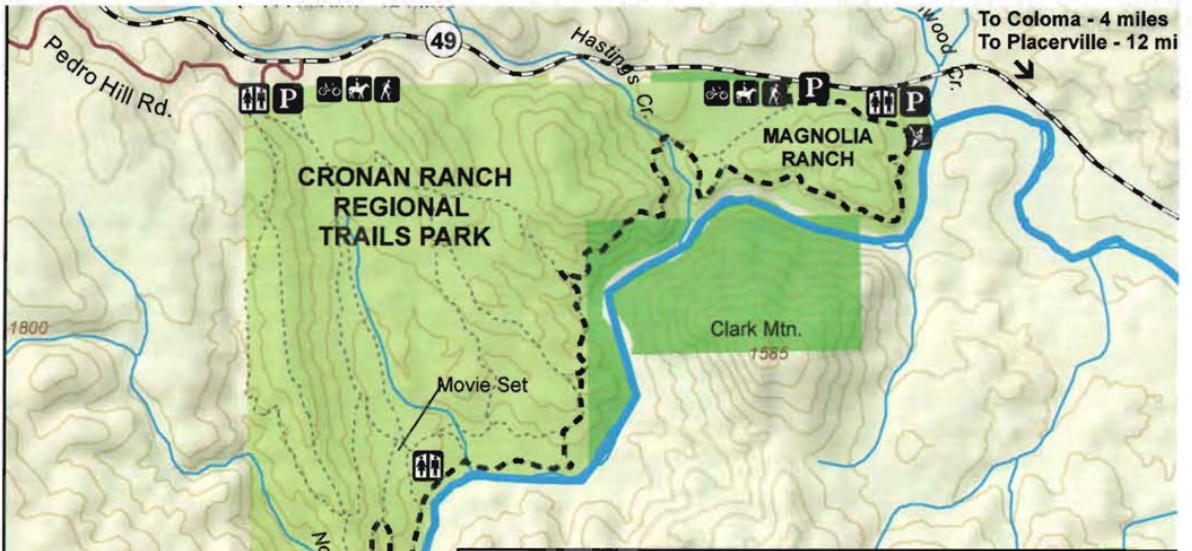
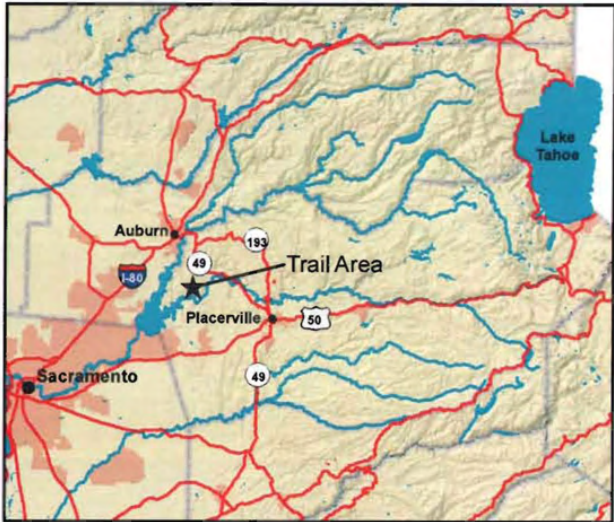
Table 1: Plant species selection for parking area

Common name	Species name	Drought Tolerant?	Quantity
Trees			
California sycamore	<i>Platanus racemosa</i>	Yes	20
Valley oak	<i>Quercus lobata</i>	Yes	30
California buckeye	<i>Aesculus californica</i>	Yes	10
Shrubs			
Coffeeberry	<i>Rhamnus californica</i>	Yes	10
Coyote brush	<i>Baccharis pilularis</i>	Yes	10
Perennial Forbs			
California aster	<i>Symphotrichum (= Aster) chilensis</i>	Yes	25
Blue-eyed grass	<i>Sisyrinchium bellum</i>	Yes	25
Goldenrod	<i>Euthamia occidentalis</i>	Yes	25
Gum plant	<i>Grindelia camporum</i>	Yes	25
Phacelia	<i>Phacelia californica</i>	Yes	25
Yarrow	<i>Acchilea millefolium</i>	Yes	25
Graminoids			
Deer grass	<i>Muhlenbergia rigens</i>	Yes	100
Blue wildrye	<i>Elymus glaucus</i>	Yes	100

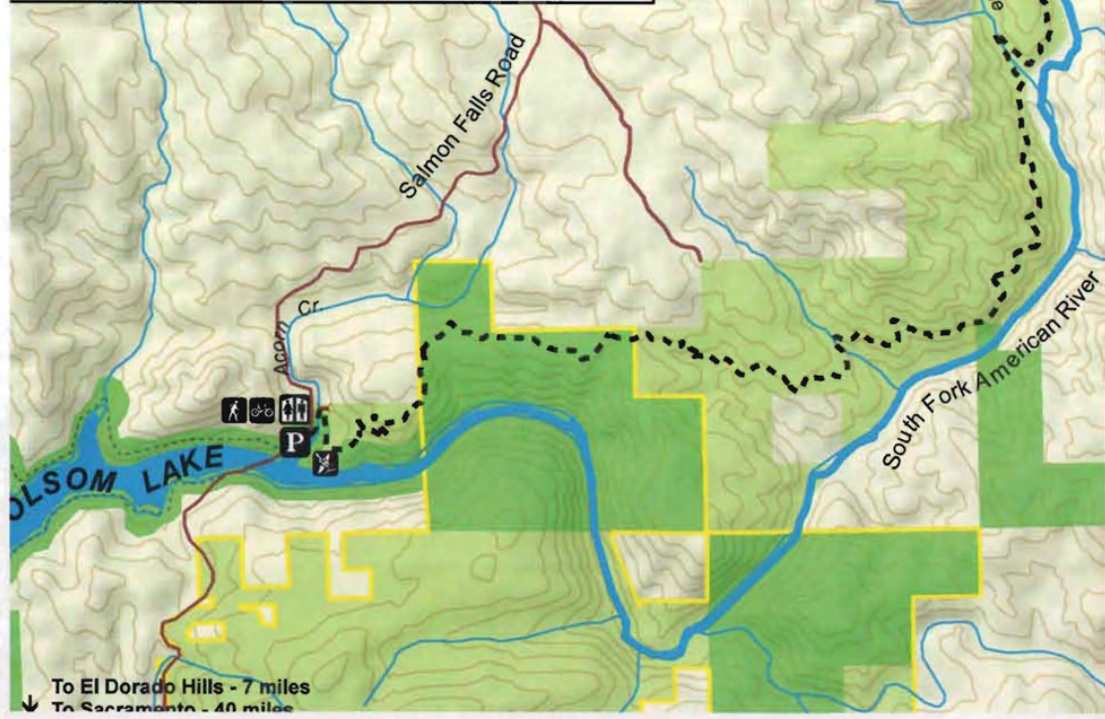
13 JUN 17 PM 2:29
RECEIVED
PLANNING DEPARTMENT

S 13-0010

South Fork American River Trail



To Coloma - 4 miles
To Placerville - 12 mi



To El Dorado Hills - 7 miles
To Sacramento - 40 miles

Key to Symbols

- Trails
- Roads
- Highway
- South Fork American River & Tributaries
- Pine Hill Preserve Boundary
- Contour (100 ft)
- Public Lands (ARC Acquisitions 1989 - 2010)
- Pre-Existing Public Lands
- Parking
- Restroom
- Hiking Trail
- Bicycle Trail
- Equestrian Trail
- River Access



In Partnership With:

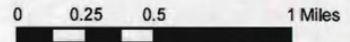


EXHIBIT K