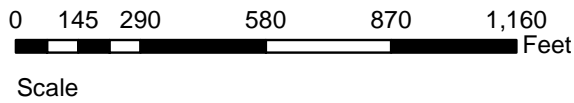
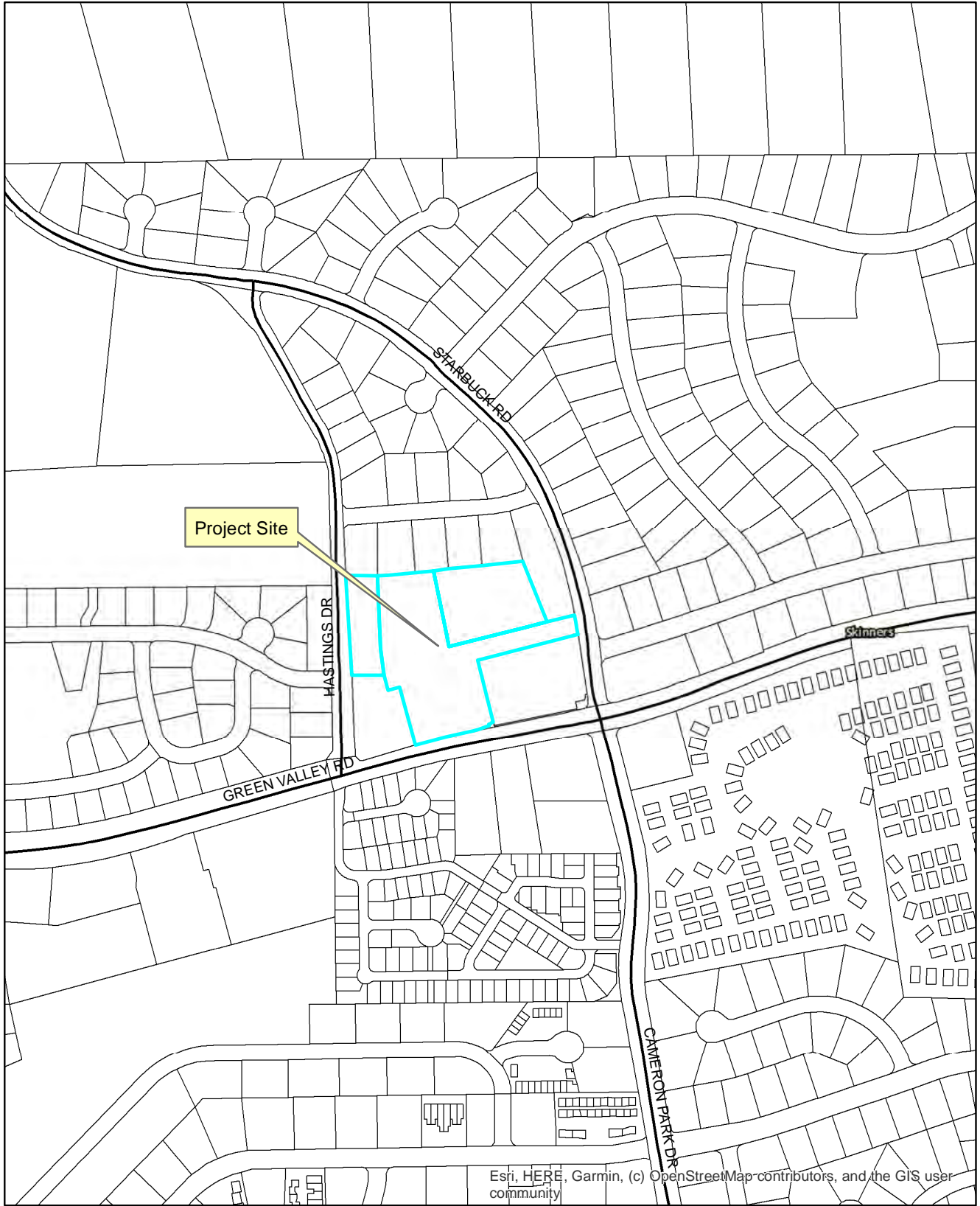


TM-E22-0007 CAMERON RANCH
EXHIBIT A - LOCATION MAP



POR. SECS. 21 & 28., T.10N., R.9E., M.D.M.
 THE HIGHLANDS UNIT NO. 4A
 G-64

Tax Area Code

102:42

**TM-E22-0007 CAMERON RANCH
 EXHIBIT B-1 - ASSESSOR'S PARCEL MAP**



FOR M/R SEE PG. 26

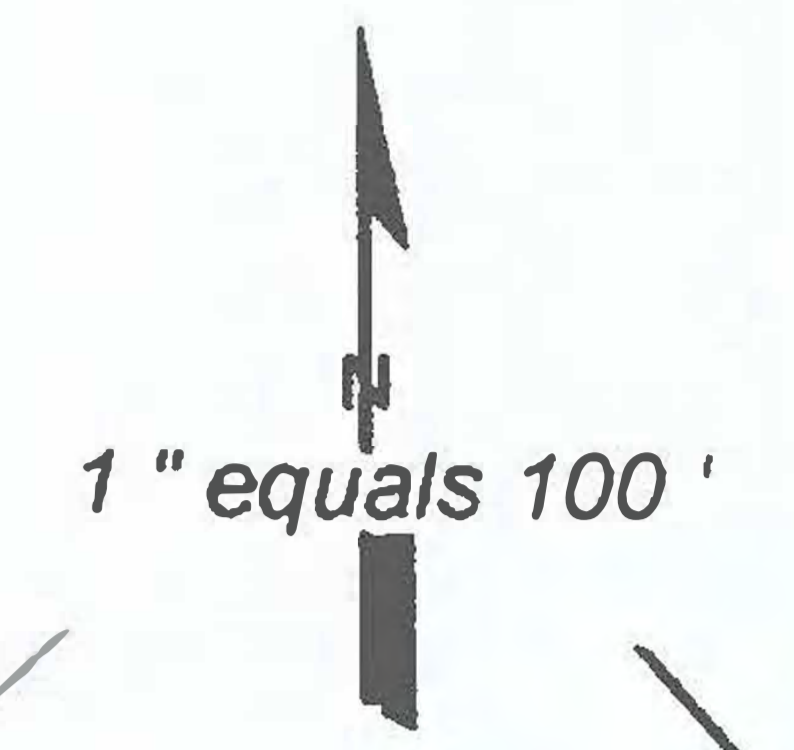
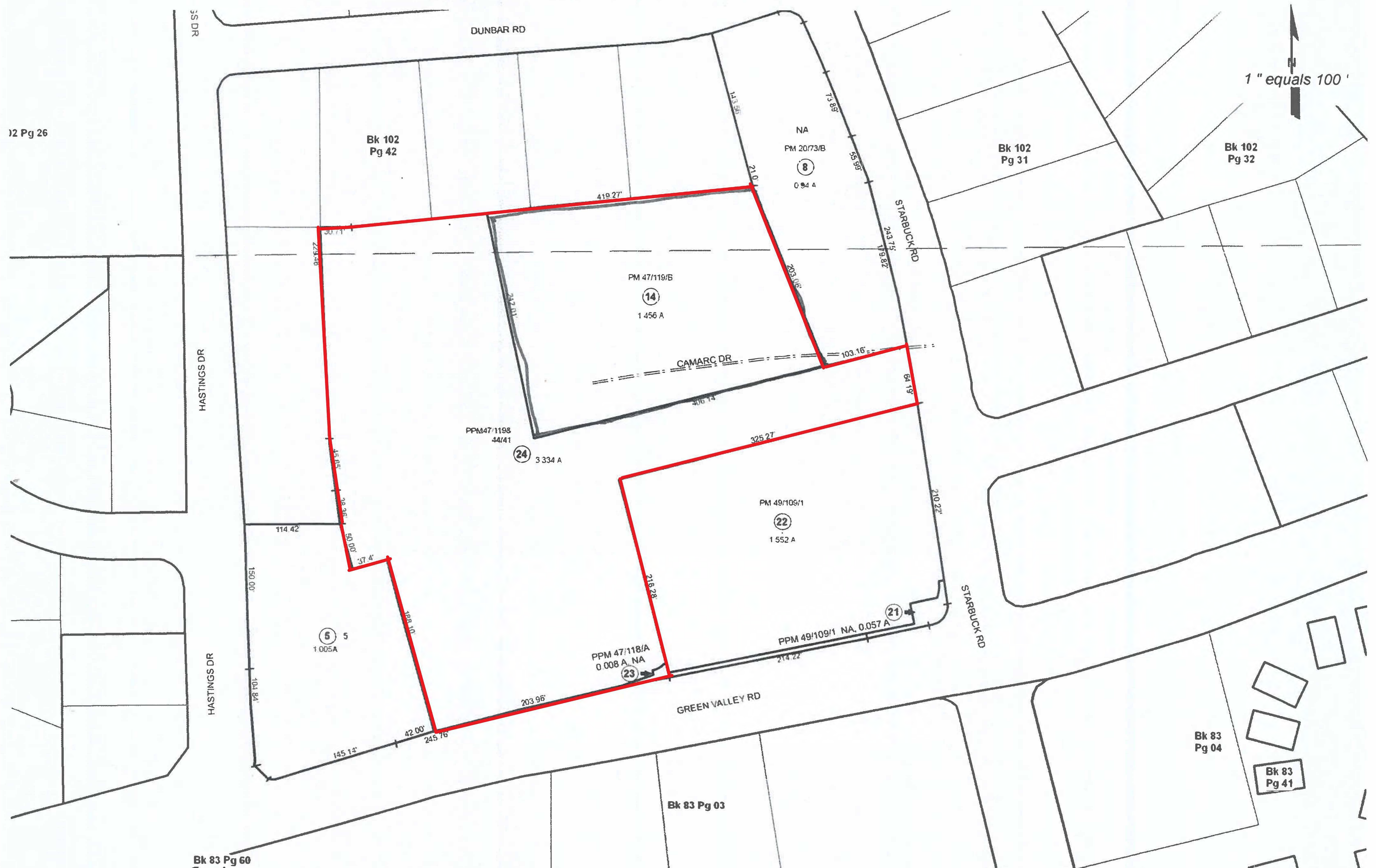
THIS MAP IS NOT A SURVEY. It is prepared by the El Dorado Co. Assessor's office for assessment purposes only.

NOTE - Assessor's Block Numbers Shown in Ellipses
 Assessor's Parcel Numbers Shown in Circles

Assessor's Map Bk. 102 - Pg. 42
 County of El Dorado, California

**THE HIGHLANDS UNIT NO. 3
POR. SECS. 21 & 28 T.10N., R.9E., M.D.M.**

**TM-E22-0007 CAMERON RANCH
EXHIBIT B-2 - ASSESSOR'S PARCEL MAP 102:11**



12 Pg 26

Acres are Estimates

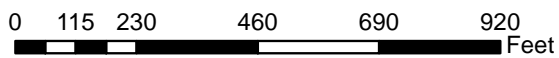
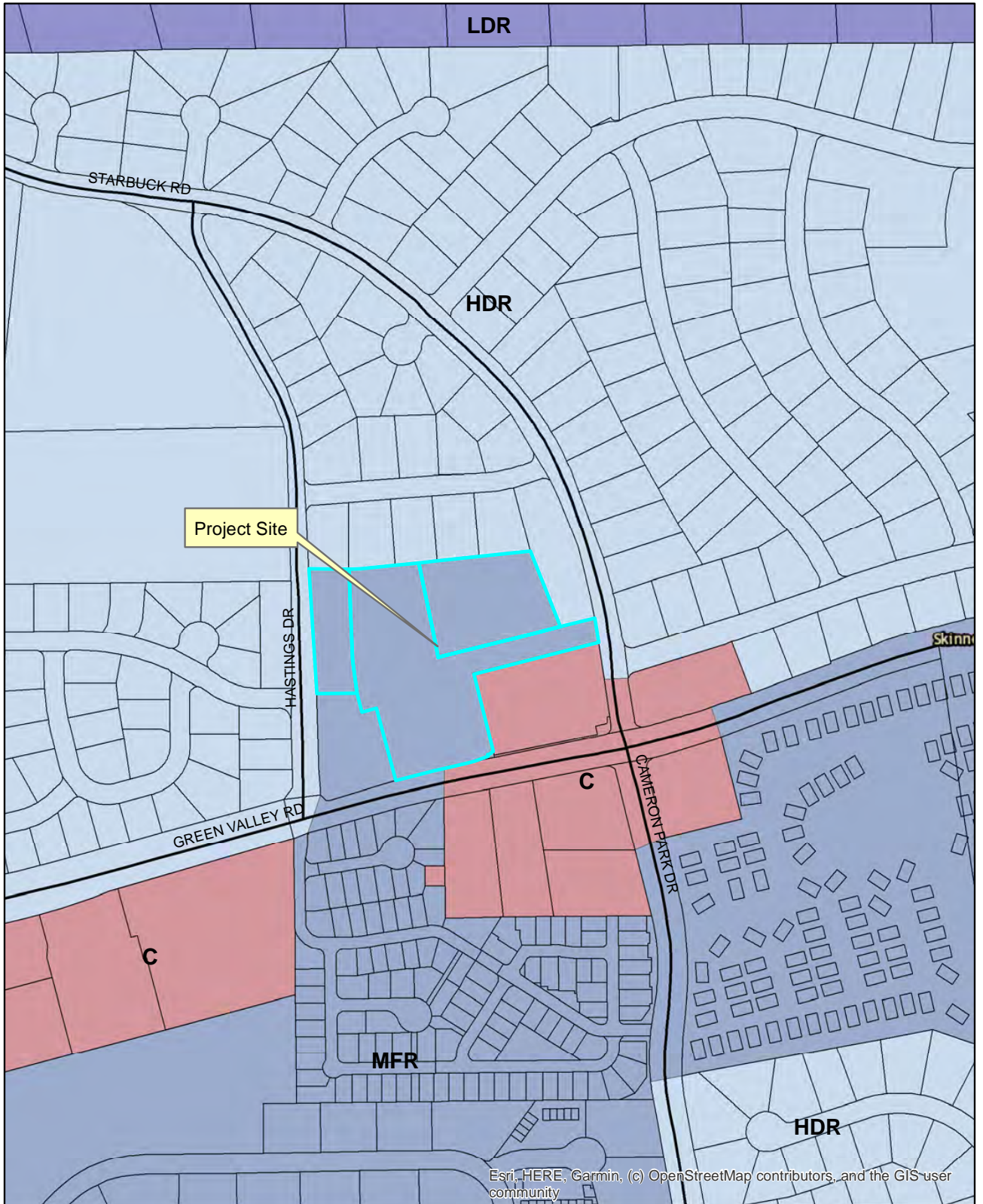
Adjacent Map Pages Shown in Grey Text
Assessor's Block Numbers Shown in Ellipses
Assessor's Parcel Numbers Shown in Circles

Rev. June 4, 2008

Assessor's Map Bk. 102, Pg. 11
County of El Dorado, CA

by the El Dorado Co
only. Area calculations
its should verify items

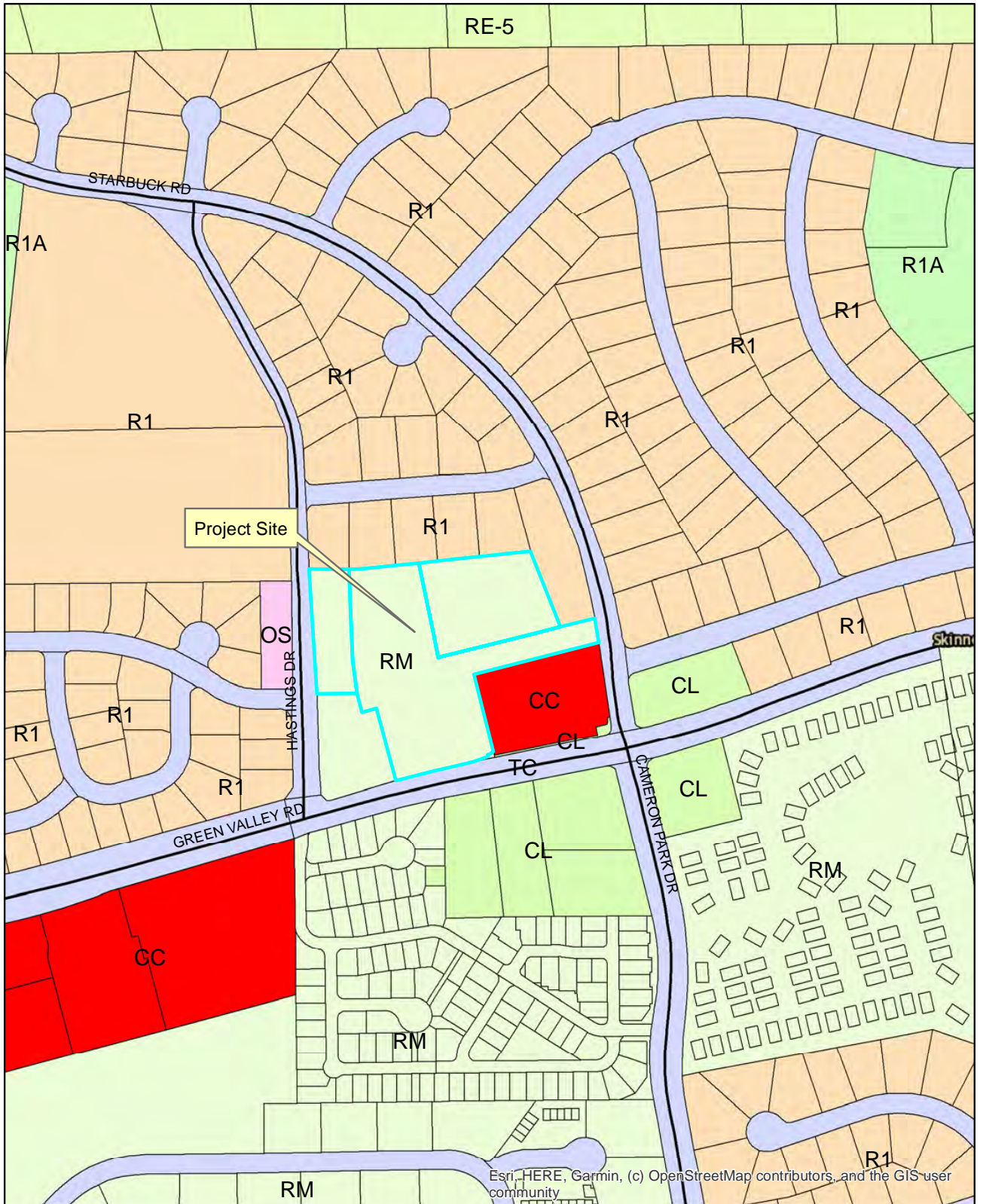
TM-E22-0007 **CAMERON RANCH**
EXHIBIT C - GENERAL PLAN LAND USE MAP



Scale



TM-E22-0007 CAMERON RANCH
EXHIBIT D - ZONING MAP

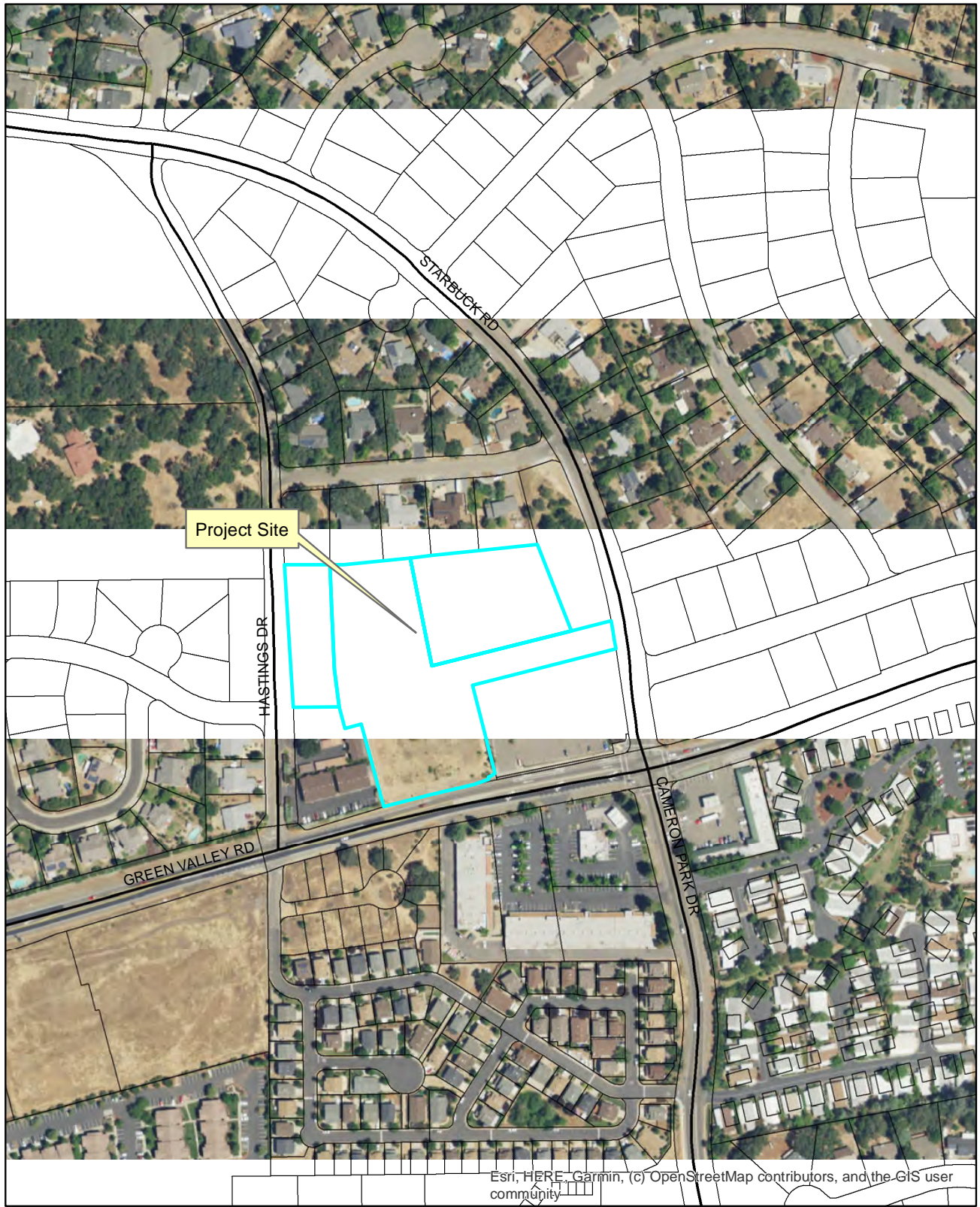


0 115 230 460 690 920
Feet

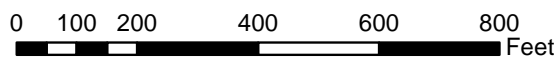
Scale



TM-E22-0007 CAMERON RANCH
EXHIBIT E - AERIAL MAP



Esri, HERE, Garmin, (c) OpenStreetMap contributors, and the GIS user community



Scale



**TM-E22-0007 CAMERON RANCH
EXHIBIT F - CAMERON RANCH TENTATIVE
SUBDIVISION MAP TIMELINE AND EXPIRATION**

Cameron Ranch Tentative Subdivision Map Timeline and Expiration				
Item No.	Type of Action	Application	Dates (From/To)	Total Time (Years Unless Noted)
1	Discretionary	Original TM Approval Date (TM17-1531)	6/26/2018	3
		Original Expiration	6/26/2021	
		<i>EDC code Sec. 120.74.020</i>		
Current Request				
2	Legislative	Time Extension	6/26/2021	18 months
		Revised Expiration	12/26/2022	
		<i>Automatic map extension under AB 1561 and California Government Code §65914.5</i>		
3	Discretionary	Time Extension	6 Years	6
		Revised Expiration if Approved	12/26/2028	
		<i>Request for six, 1- year time extensions in accordance with EDC code Sections 120.75.020 and 120.75.030.</i>		

OWNER/APPLICANT
 STARBUCK ROAD 56, LLC
 2625 SHERIDAN WAY
 SACRAMENTO, CA 95821
 CONTACT: CHUCK CENTERS

MAP PREPARER/ENGINEER
 R.E.Y. ENGINEERS, INC.
 905 SUTTER STREET, SUITE 200
 FOLSOM, CA 95630

MAP SCALE & CONTOUR INTERVAL
 1" = 40'
 CONTOUR INTERVAL = 5'

SOURCE OF TOPOGRAPHY
 RADMAN AERIAL PHOTOGRAPHY

SECTION, TOWNSHIP, & RANGE
 SW 1/4 SECTION 21, T. 10 N., R. 9 E. M.D.M.

ASSESSOR'S PARCEL NUMBERS
 102-110-24, 102-110-14, & 102-421-01

EXISTING/PROPOSED ZONING
 EXISTING: RM-AA-DC
 PROPOSED: RM-AA-DC-PD

TOTAL AREA
 5.6 ACRES +/-

TOTAL NUMBER OF PARCELS
 41- SINGLE-FAMILY RESIDENTIAL UNITS
 (32 ATTACHED, 9 DETACHED)
 1- ROADWAY LOT
 1- LOT A

MINIMUM PARCEL AREA
 2821 SF

WATER SUPPLY & SEWER DISPOSAL
 EL DORADO IRRIGATION DISTRICT

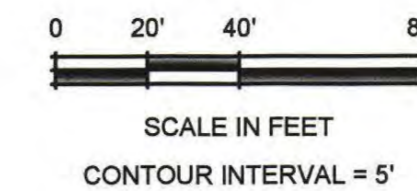
PROPOSED STRUCTURAL FIRE PROTECTION
 CAMERON PARK FIRE DISTRICT

DATE OF PREPARATION
 AUGUST 30, 2017

CAMERON RANCH

TENTATIVE MAP

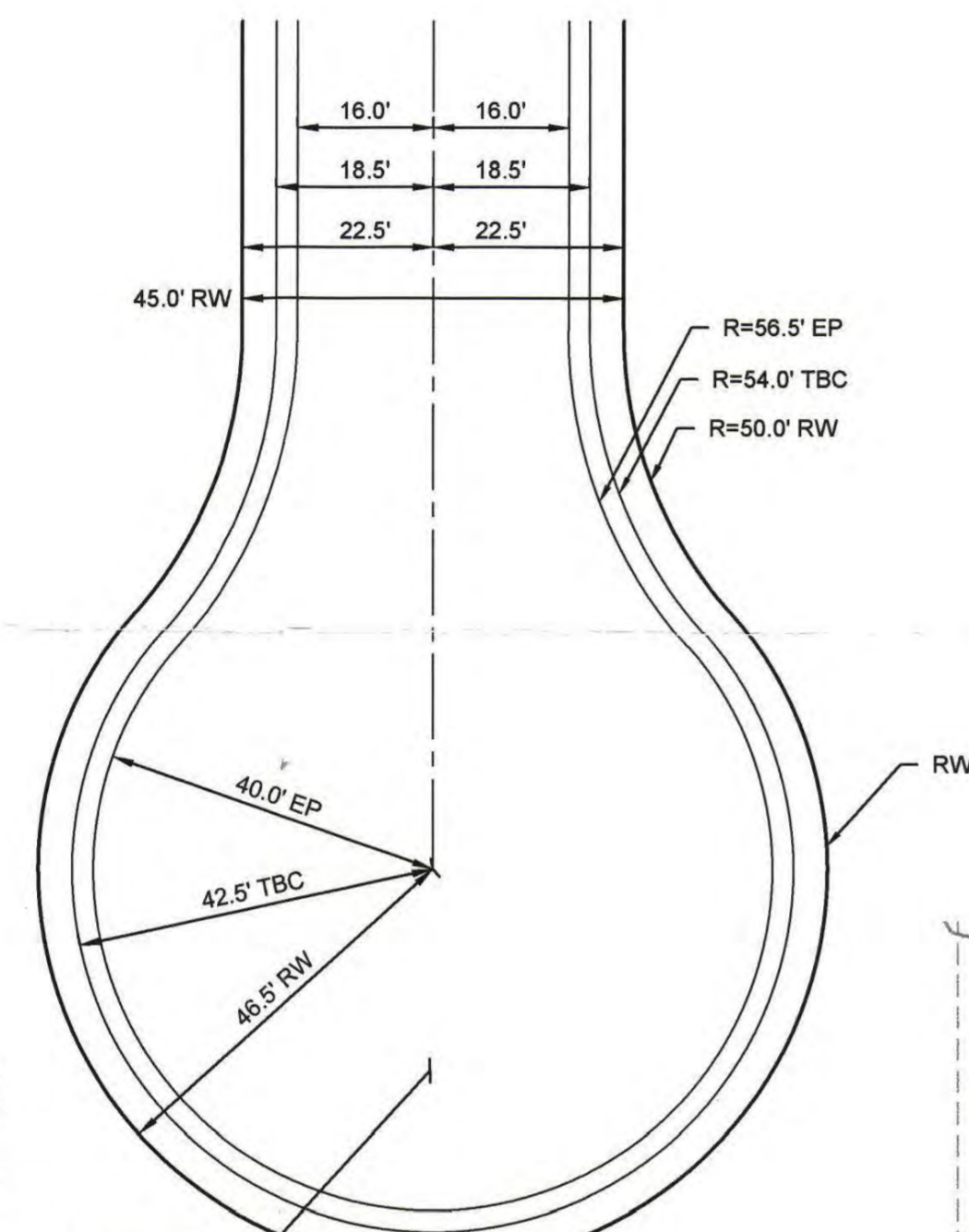
EL DORADO COUNTY, CALIFORNIA
 AUGUST 2017



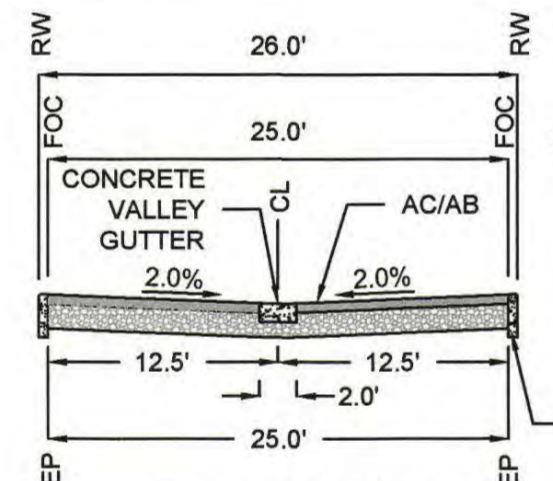
905 Sutter Street, Suite 200, Folsom, CA 95630
 (916) 366-3040 Fax (916) 366-3303
 R.E.Y. ENGINEERS, Inc.
 Civil Engineers / Land Surveyors



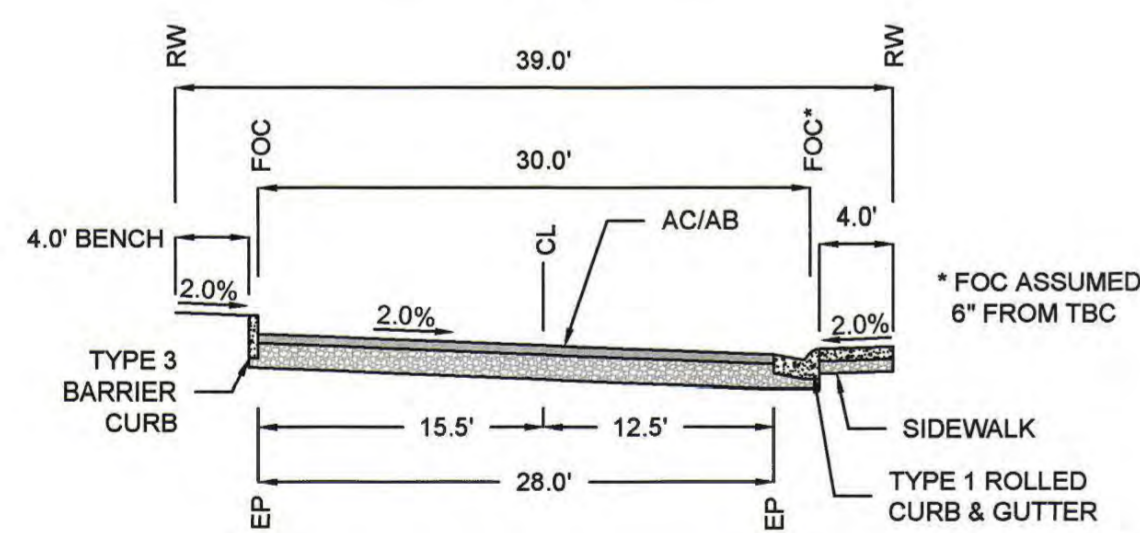
TM-E22-0007 CAMERON RANCH EXHIBIT G - APPROVED CAMERON RANCH TENTATIVE SUBDIVISION MAP (TM18-1531)



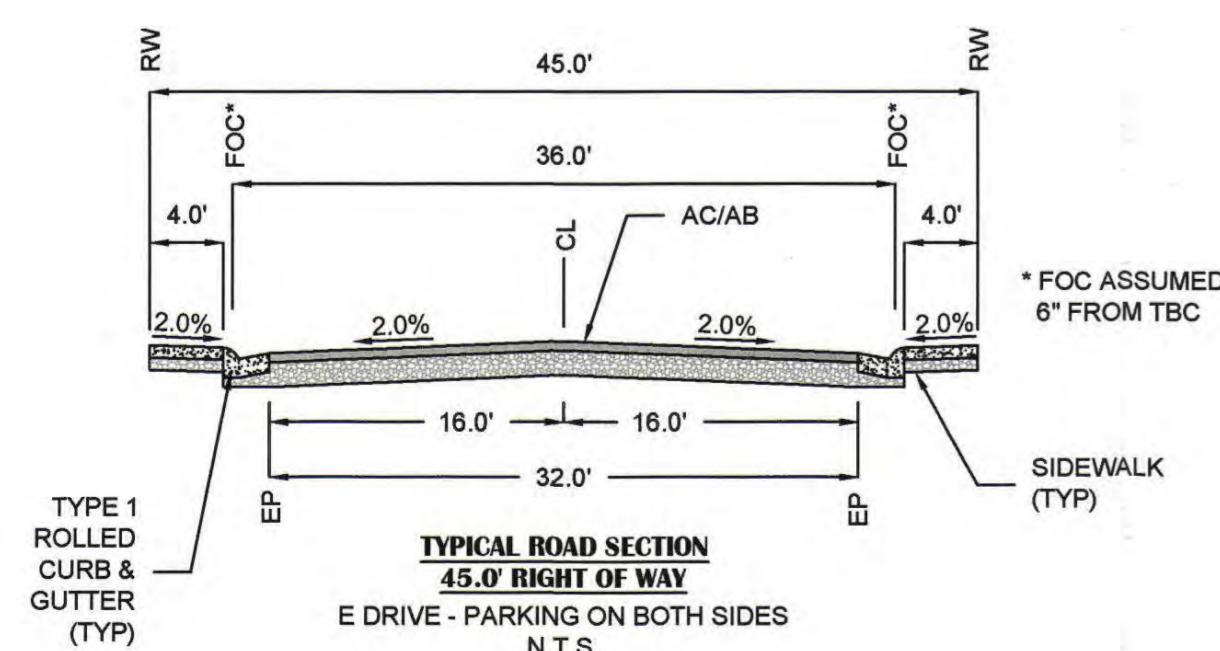
ROADWAY SECTIONS



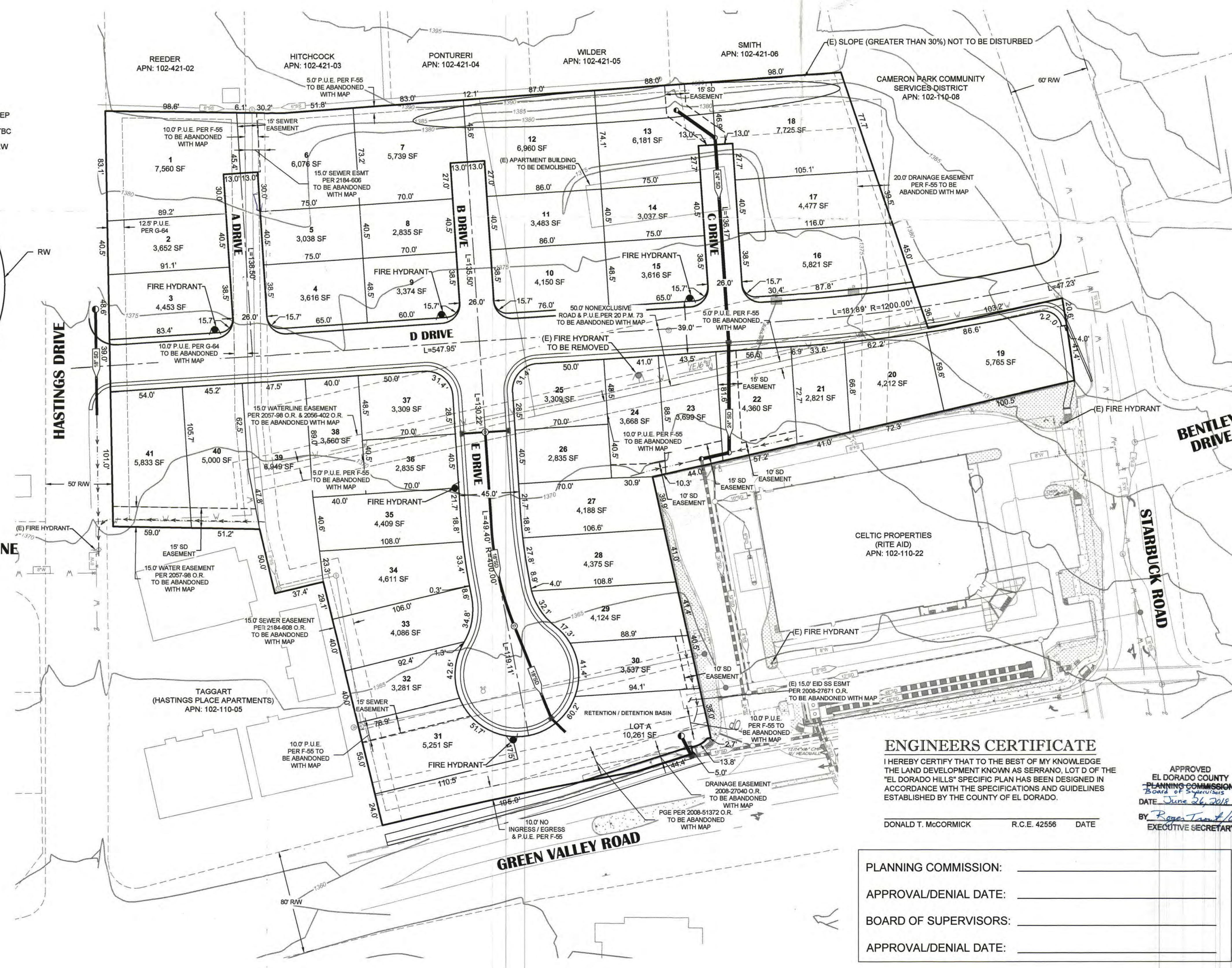
**TYPICAL ROAD SECTION
 26.0' RIGHT OF WAY**
 A, B, & C DRIVE - NO PARKING
 N.T.S.



**TYPICAL ROAD SECTION
 39.0' RIGHT OF WAY**
 D DRIVE - PARKING ON BARRIER CURB SIDE ONLY
 N.T.S.



**TYPICAL ROAD SECTION
 45.0' RIGHT OF WAY**
 E DRIVE - PARKING ON BOTH SIDES
 N.T.S.



ENGINEERS CERTIFICATE

I HEREBY CERTIFY THAT TO THE BEST OF MY KNOWLEDGE THE LAND DEVELOPMENT KNOWN AS SERRANO, LOT D OF THE "EL DORADO HILLS" SPECIFIC PLAN HAS BEEN DESIGNED IN ACCORDANCE WITH THE SPECIFICATIONS AND GUIDELINES ESTABLISHED BY THE COUNTY OF EL DORADO.

APPROVED
 EL DORADO COUNTY
 PLANNING COMMISSION
 DATE: June 26, 2018
 BY: *Roger T. Hart*
 EXECUTIVE SECRETARY

DONALD T. MCCORMICK R.C.E. 42556 DATE

PLANNING COMMISSION: _____
 APPROVAL/DENIAL DATE: _____
 BOARD OF SUPERVISORS: _____
 APPROVAL/DENIAL DATE: _____