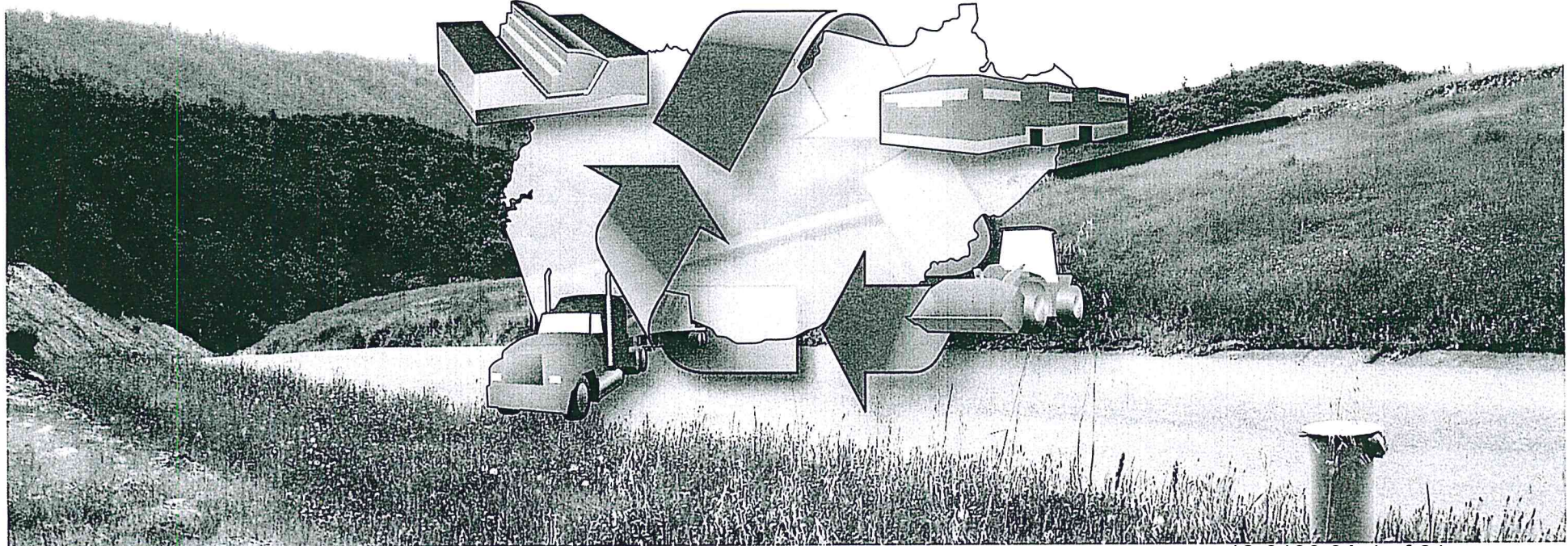




El Dorado County Solid Waste Management Plan

Board of Supervisors

June 14, 2016



Topics Covered

- Background
- Solid Waste Management Plan (SWMP) Overview
- SWMP Action Plan Status Update
- Solid Waste Program Funding
- Current Diversion Level and Next Steps
- Examples of Current Programs
- Questions?

Background

Year	Action
August 2008	Solid Waste Services Update to the Board
March 2009	Board directed staff to establish a working solid waste planning committee
June 2009	Board directed staff, in conjunction with the newly established SWMP working committee, to develop a SWMP
September 2009	Board approved and released RFP
February 2010	Board selected NewPoint Group; approved contract in April 2010
January 2012	Board approved SWMP

Review every five (5) years and update if necessary

EDSWAC, County Staff

Solid Waste Management Plan Overview

Goal: Achieve 75% landfill diversion by 2020 in the most cost-effective manner

- **Action Plan**
- **Volume I, Executive Summary**
- **Volume II, Detailed Plan Strategies**
 - Goals and objectives
 - 42 strategies
 - Near-term, intermediate-term and long-term strategies
 - Program, infrastructure and supporting strategy types
 - Description/rationale; costs/benefits; barriers/challenges; and implementation timing, strategies and next steps
- **Volume III, Response to Comments**

Solid Waste Management Plan

Action Plan

■ 16 Strategies Selected

- Cost-effective (10 tons of diversion/\$1000 spent) and State mandated; 12 Program (ranked 1-12), 3 Infrastructure, 1 Support (WS JPA)
 - 11 Near-term strategies, 2012 to 2016
 - 5 Intermediate-term strategies, 2017 to 2025
 - 0 Long-term strategies, 2026 to 2040
- Total estimated cost
 - One-Time: \$14,235,000 - \$23,397,500
 - Recurring: \$1,612,000 - \$3,472,000

Action Plan Strategy Status

■ Action Plan near-term strategies completed (7 of 11):

- Pay-as-you-throw pricing (Rank #1)
- Construction and Demolition Debris Ordinance (Rank #2)
- Enhance home composting (Rank #6)
- Expand curbside recycling programs (Rank #7)
- Mandatory commercial recycling (Rank #8)
- Enhance school, park, and community facility recycling (Rank #10)
- Enhance multi-family recycling (Rank #11)

■ Action Plan near-term strategies in progress (2 of 11):

- Expand Purchasing Preference Policy (Rank #3)
- Expand Mandatory Residential Collection (Rank #4)

Action Plan Strategy Status

- **Action Plan near-term strategies not completed (2 of 11):**
 - West Slope JPA (Support Strategy)
 - West Slope C&D Facility (Infrastructure Strategy)

- **Action Plan intermediate-term strategies initiated (3 of 5):**
 - Commercial facility waste audits (Rank #9)
 - Commercial food waste collection (AB 1876) (Rank #12)
 - Modern West Slope MRF/Transfer Station (Design phase)

- **Action Plan intermediate-term strategy pending (2 of 5):**
 - Develop EDC Composting Facility
 - Residential food waste collection program (Rank #5)

Action Plan Strategy Status

■ **Non-Action Plan strategies initiated or completed:**

- Conduct procurement(s) to obtain franchised service providers
- Expand residential cart collection system
- Expand types of recyclables collected curbside
- Advance outreach and education programs
- Conduct waste characterization studies (CalRecycle)
- Expand diversion programs at public facilities
- SVTS and/or strategically placed debris boxes on West Slope
- Prepare for possible elimination of residential yard waste burning on West Slope
- Performance metrics

Solid Waste Program Funding

■ **County Service Area (CSA) 10 - West Slope**

- Union Mine Landfill Operations, Closure, Post Closure
- AB 939, AB 341 Compliance
- Illegal Disposal, Litter Abatement Activities, HHW

■ **CSA 10 - East Slope**

- Clean Tahoe Program, HHW

■ **Franchise Fees and MRF Tipping Fees**

- Franchise Agreement Administration and Oversight
- MRF Inspection and Oversight
- SWMP Implementation

■ **CDA Transportation Division**

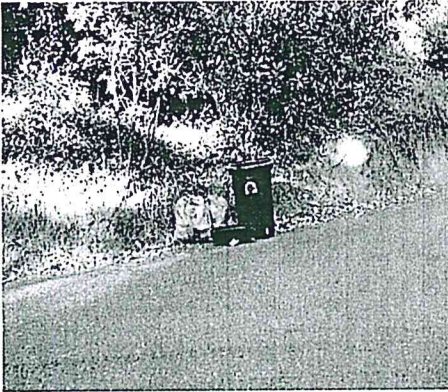
- Sign Ordinance and Litter Abatement Activities

■ **Grants**

Current Diversion Level and Next Steps

- El Dorado County currently at 68%
- On track to achieve 75% by 2020
- EDSWAC Review Results
- Continued implementation of the SWMP
- Respond to current and future legislation
 - AB 1826 (Chesbro, 2014)
 - AB 876 (McCarty, 2015)
- Modern MRF/Transfer Station with new GW and C&D Processing (Operational in 2018)
- Develop EDC Composting Facility (2020-2025)
 - \$2-\$4 million capital investment, \$200-\$300k annually

Cart System



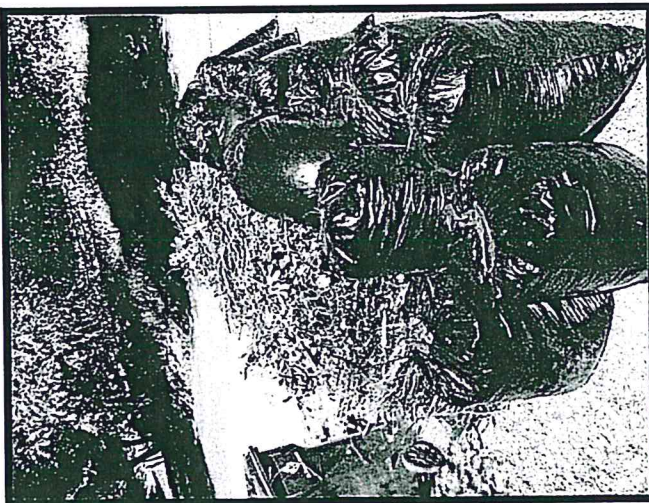
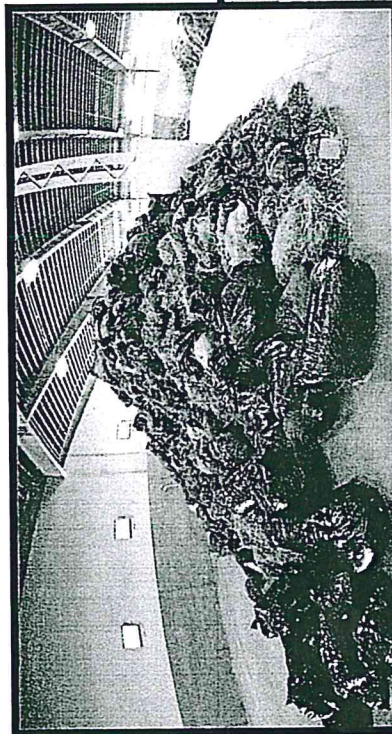
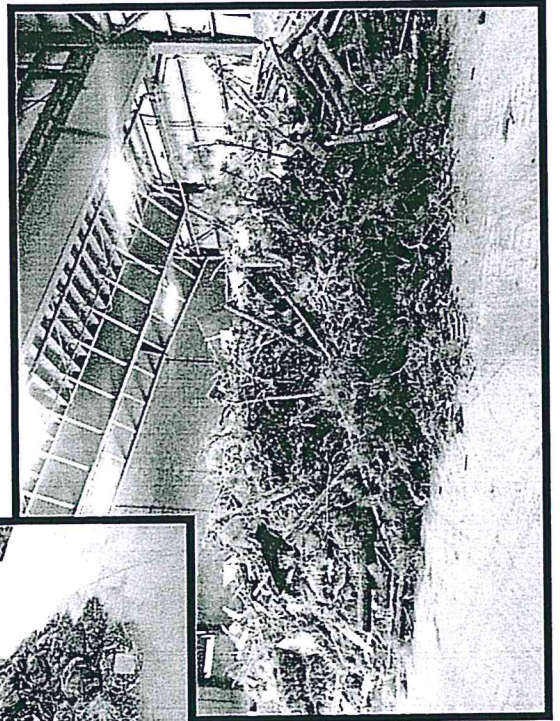
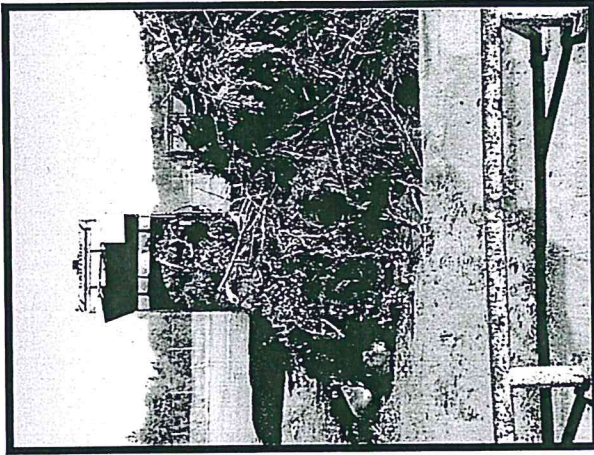
VS



Bi-weekly recycling and green waste (Area A only) collection with garbage service.

Variable garbage rates based on size of garbage can.

Green Waste



Home Composting Outreach and Education

FREE HOME COMPOSTING BIN WITH
PLEDGE TO COMPOST

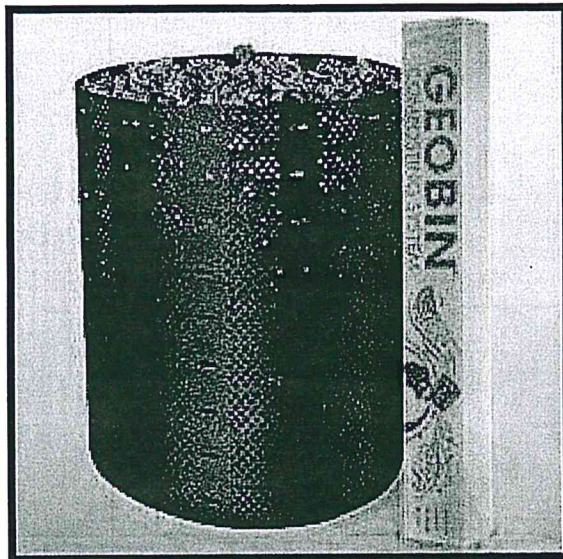
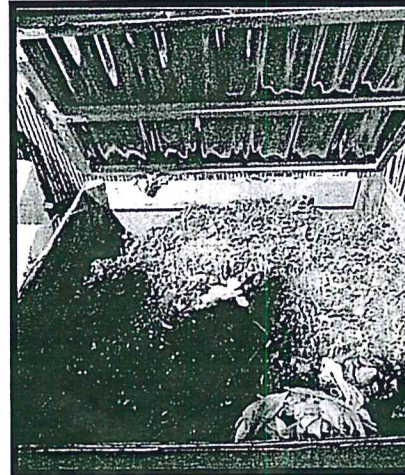
I PLEDGE

to compost food scraps and other organic
materials at home.

From
Garbage
to Garden
It's Compost Time!

First and last name _____

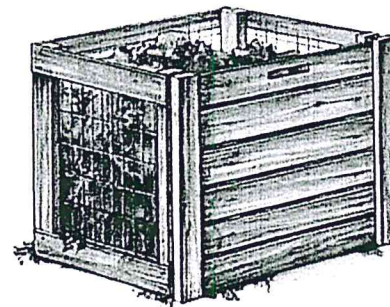
Community you live in _____



REGIONAL RECYCLING BACKYARD COMPOSTING **GUIDE**

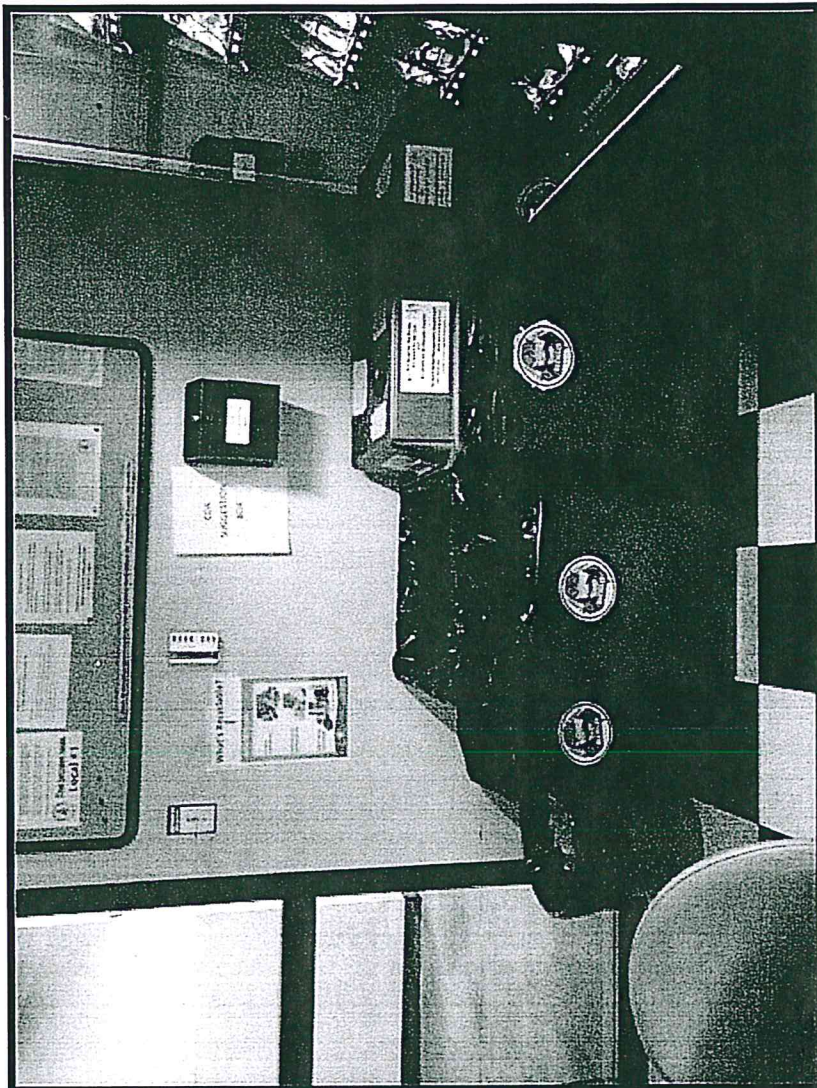
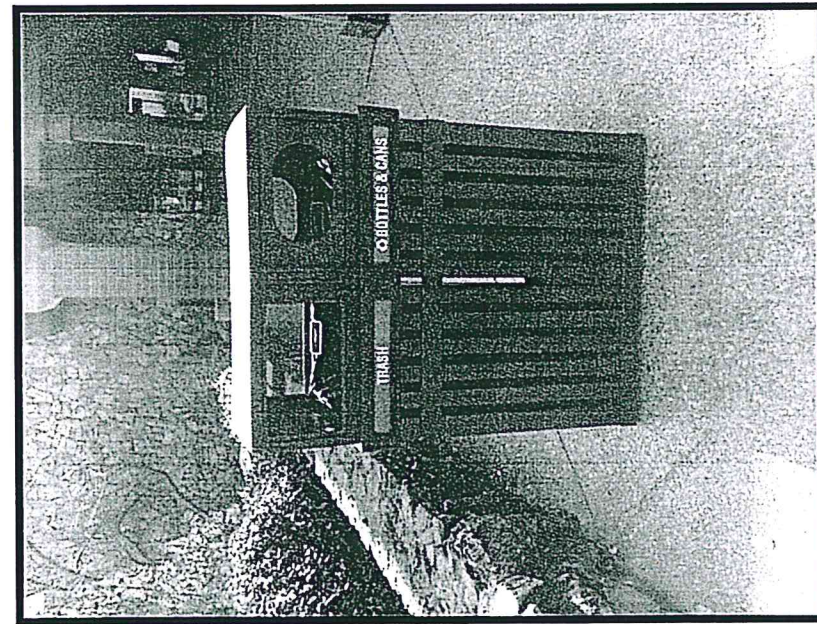
This backyard composting guide is brought to you by your city's or county's waste reduction and recycling program, including

- | | |
|-------------------------|---|
| City of Citrus Heights | County of Butte |
| City of Davis | County of El Dorado |
| City of Dixon | County of Glenn |
| City of Elk Grove | County of Plumas |
| City of Folsom | County of Sacramento |
| City of Isleton | County of San Joaquin |
| City of Sacramento | County of Stanislaus |
| City of West Sacramento | County of Tehama |
| City of Woodland | County of Tuolumne/
Master Gardeners |
| | County of Yolo |

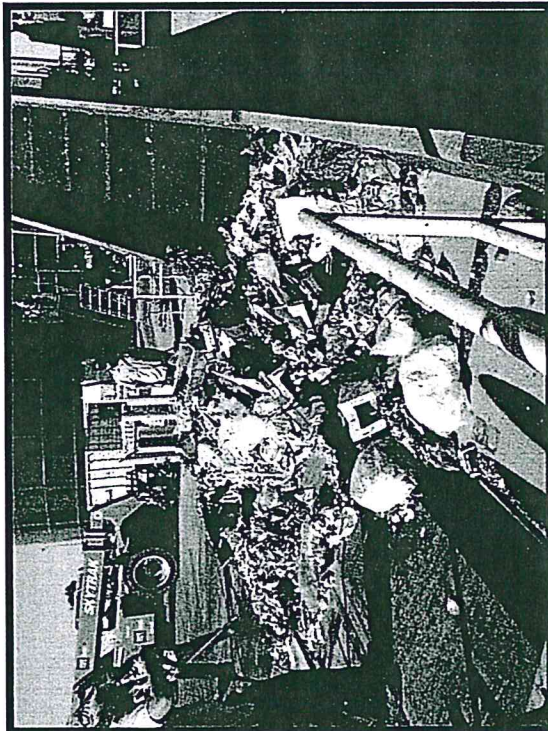
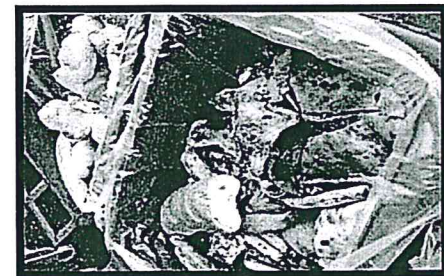
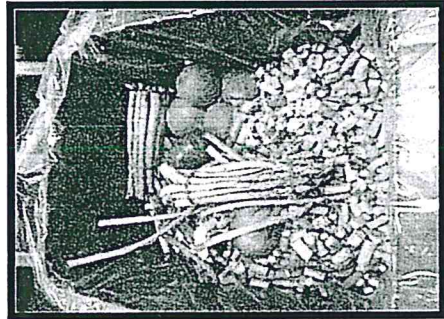
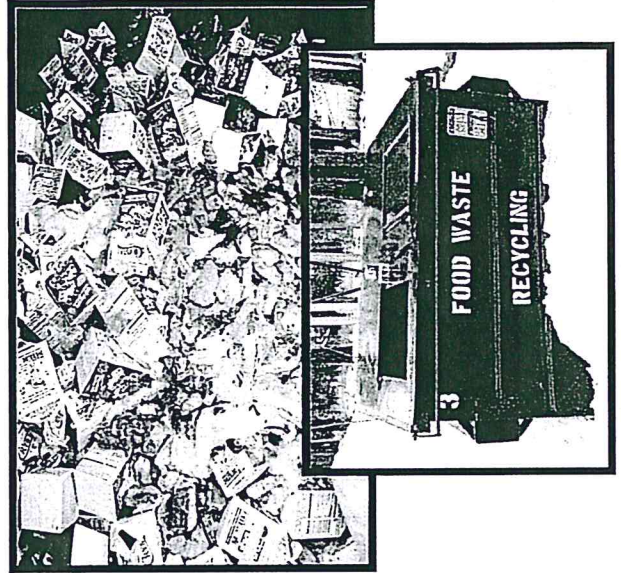
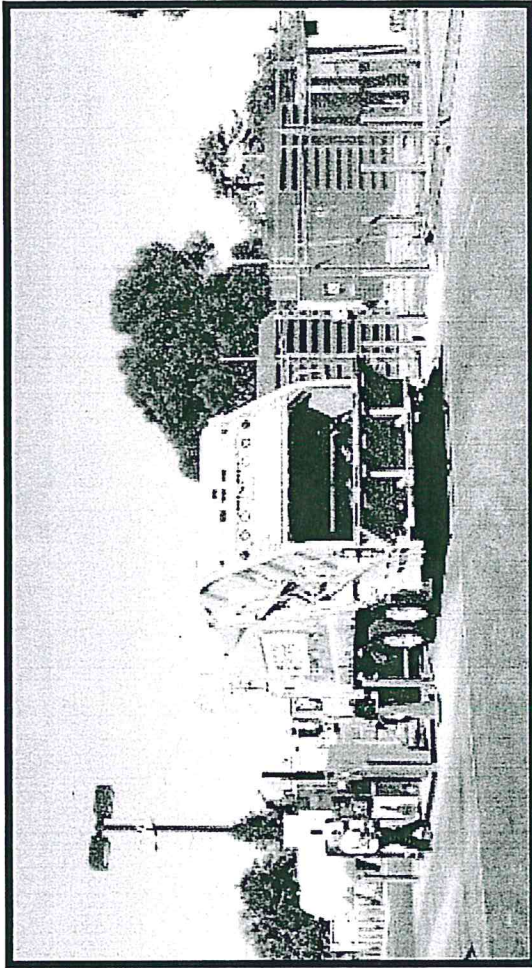


RRG
REGIONAL RECYCLING GROUP

Office Recycling

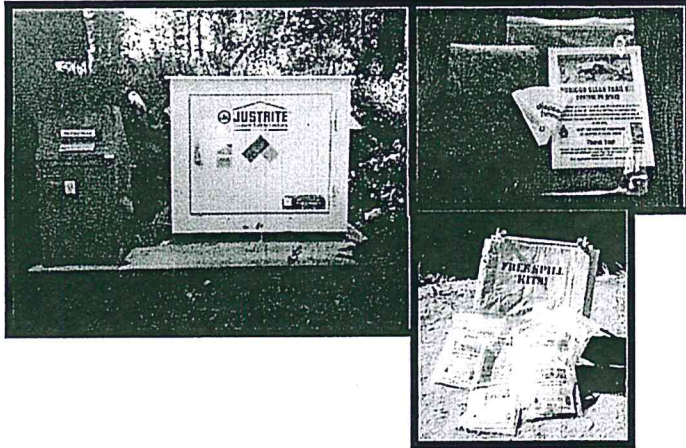


Food Waste Recycling

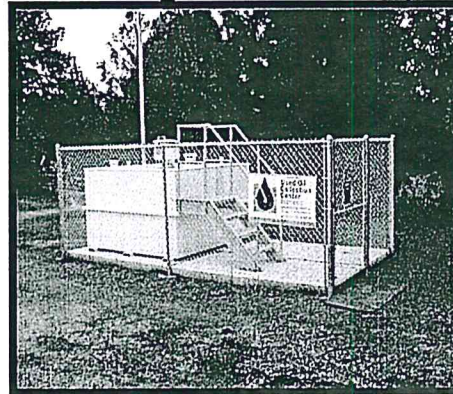


HazMat Recycling Grants

Spill Kits & Disposal for Rubicon



Used Oil and Used Oil Filter Collection Locations throughout County.



Curbside Used Oil Collection Containers



Used Oil Filter Exchange Events.

FREE OIL FILTER!
with this ad, limit 2 per person

**BRING IN YOUR USED OIL FILTER
GET A
COMPARABLE FILTER FREE!**

 Help us reach our 1000 oil filter exchange goal!

10am-Closing At Your Local AutoZone & O'Reilly Locations

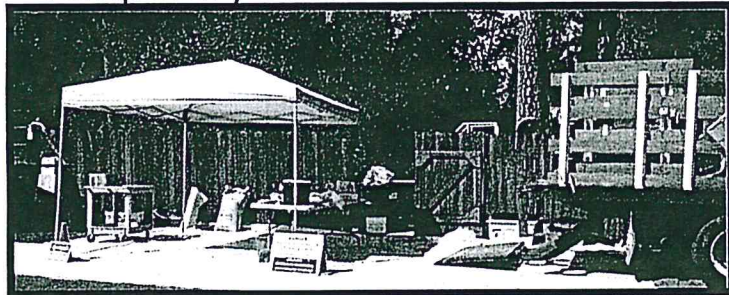
MARCH 29 - APRIL 6 SEE LOCATIONS ON REVERSE →

CAMERON PARK O'Reilly 3398 Coach Lane 530-677-8095 29 MARCH	PLACERVILLE O'Reilly AutoZone 3970 Missouri Flat Rd. 4350 Golden Cir. Dr. 530-626-9191 530-626-0852 30 MARCH
POLLOCK PINES O'Reilly 6446 Pony Express Trail 530-647-2144 5 APRIL	SOUTH LAKE TAHOE O'Reilly 2317 Lake Tahoe Blvd. 530-544-1974 6 APRIL

Home Show and County Fair Giveaways

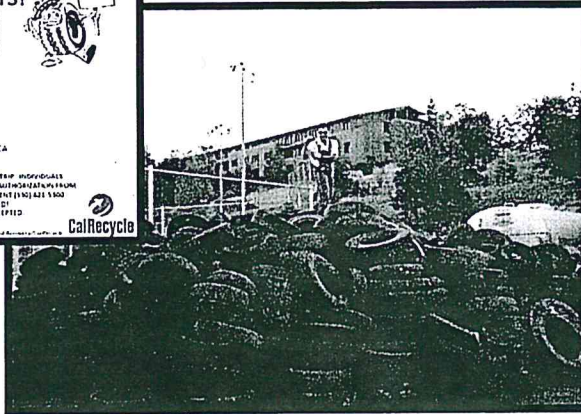


Temporary HHW Collection Events

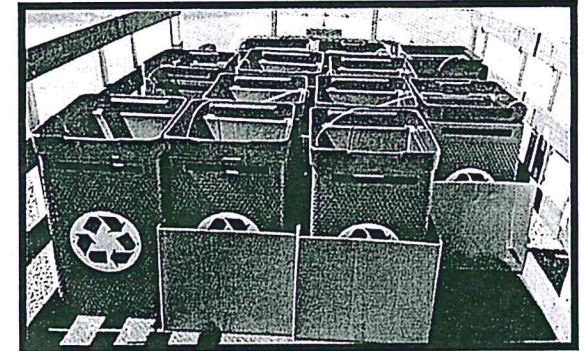


Solid Waste Recycling Grants

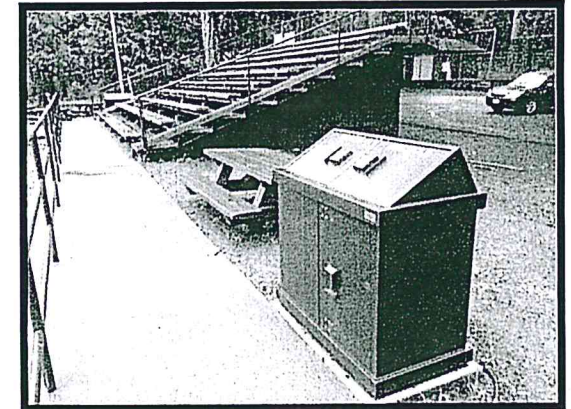
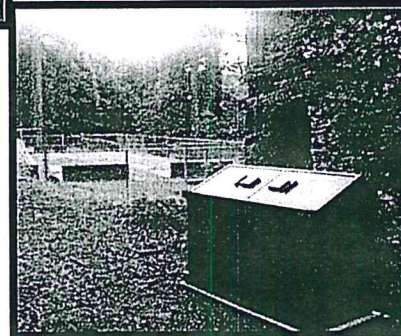
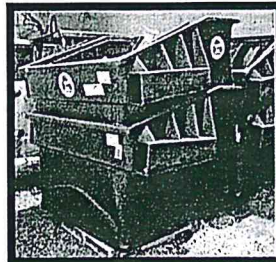
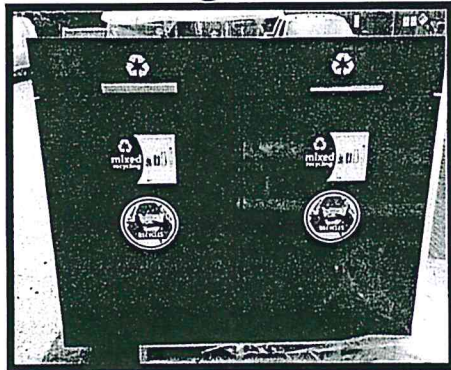
Waste Tire Amnesty Collection Events



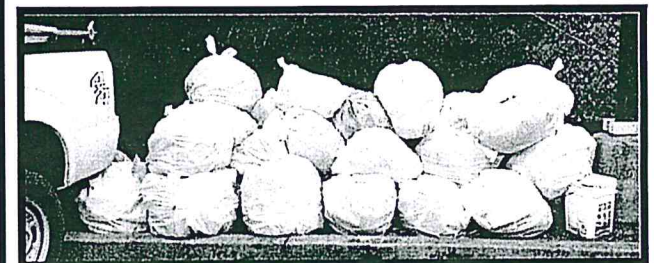
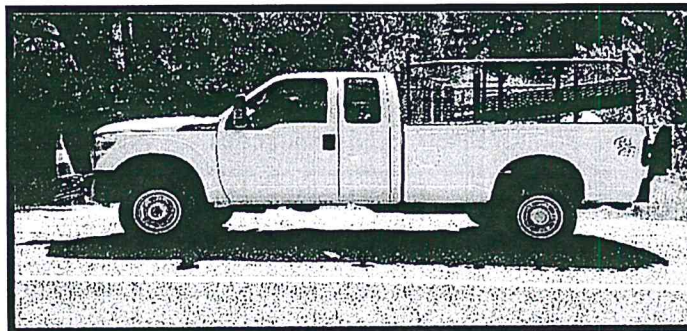
Recycling Receptacles for Parks and Schools



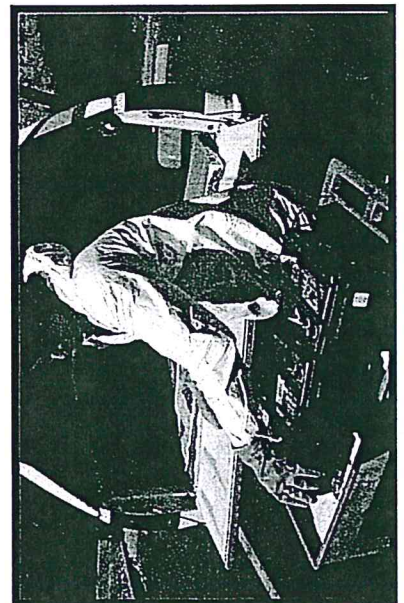
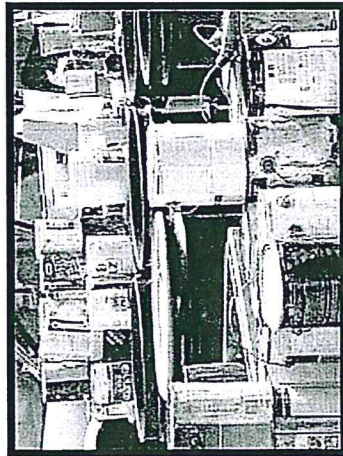
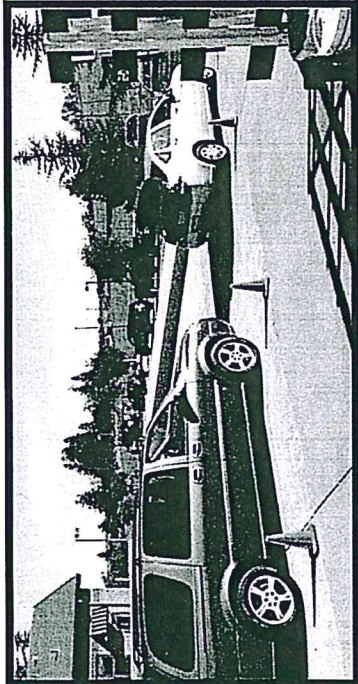
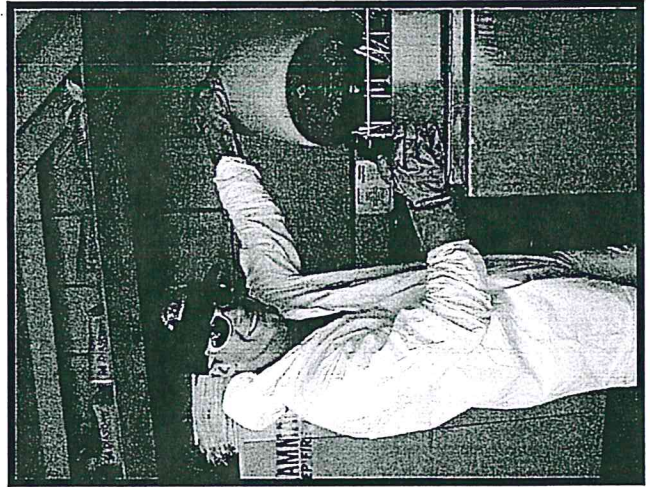
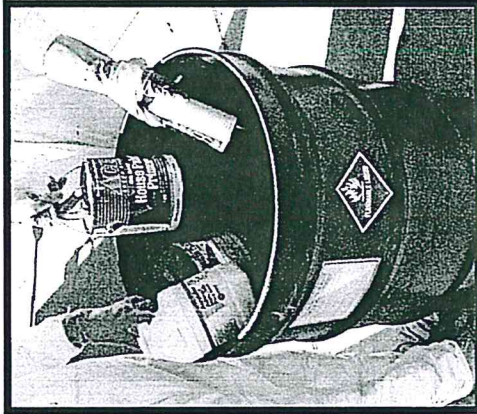
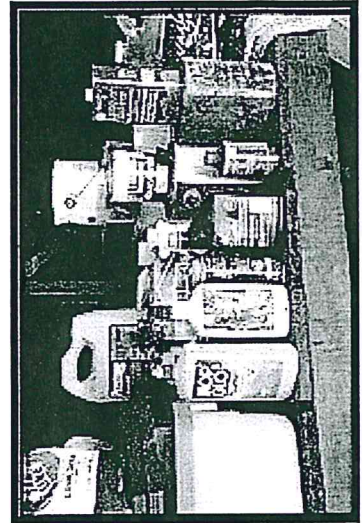
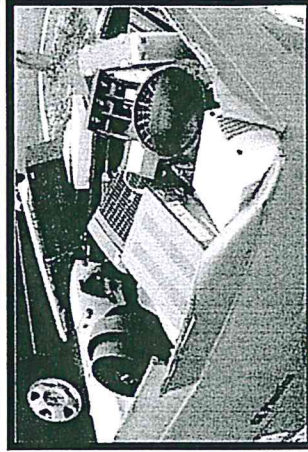
Recycling Receptacles for Fairgrounds



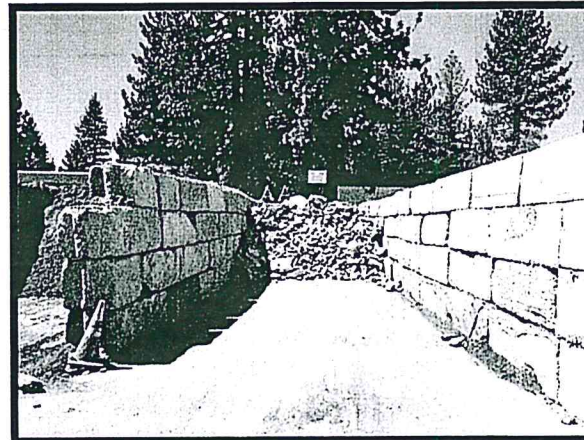
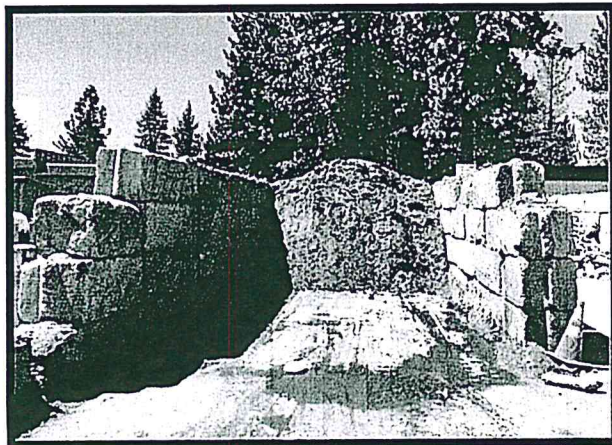
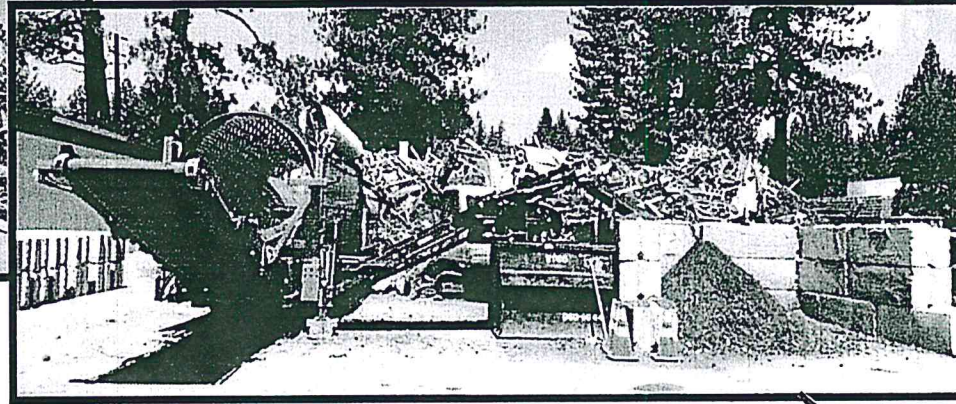
Truck for Litter Abatement Program



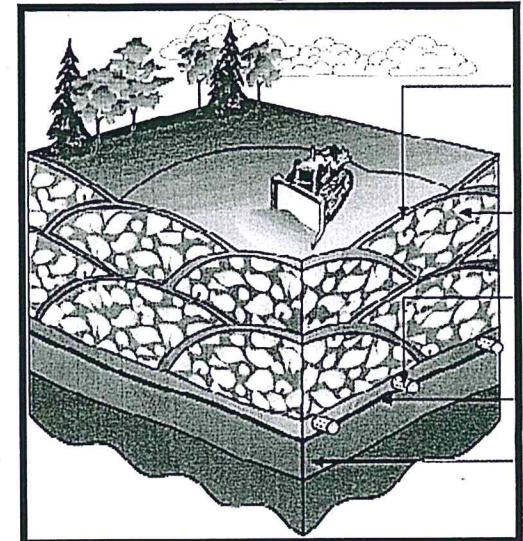
Household Hazardous Waste



Construction and Demolition Debris Recovery

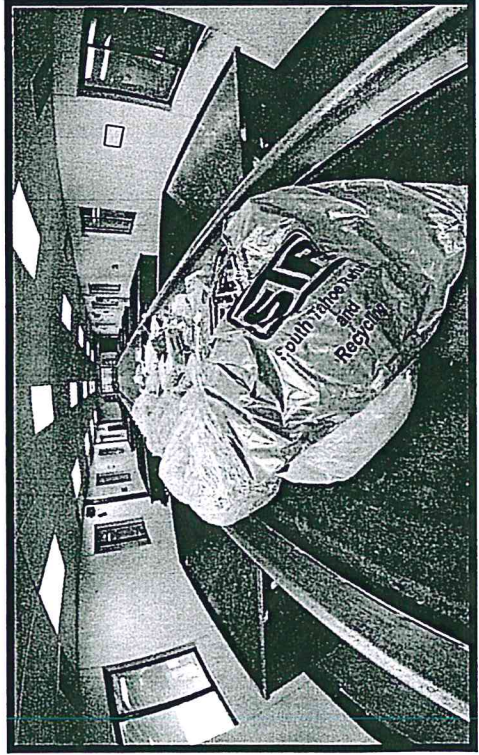
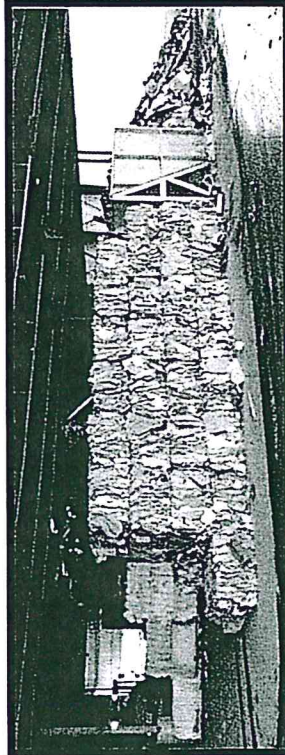
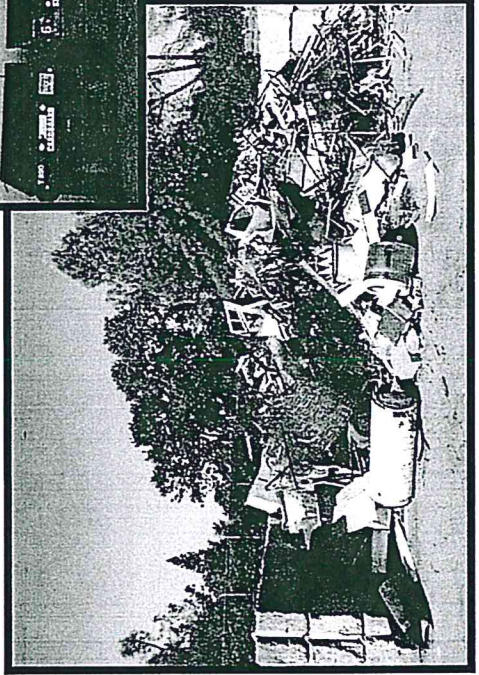
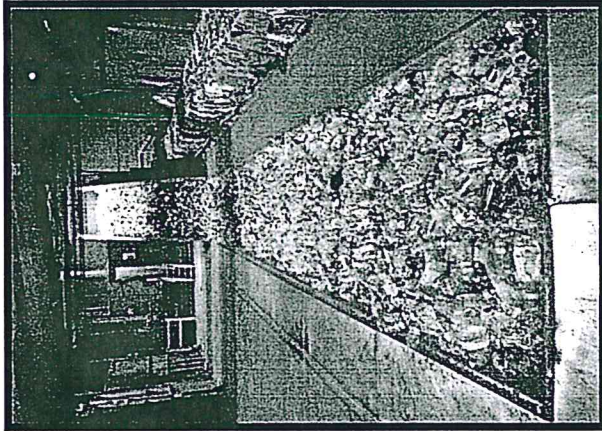
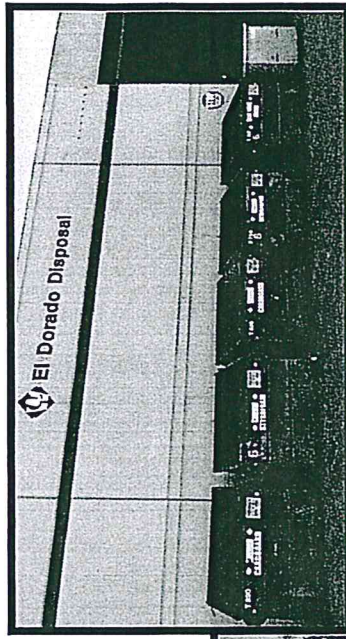
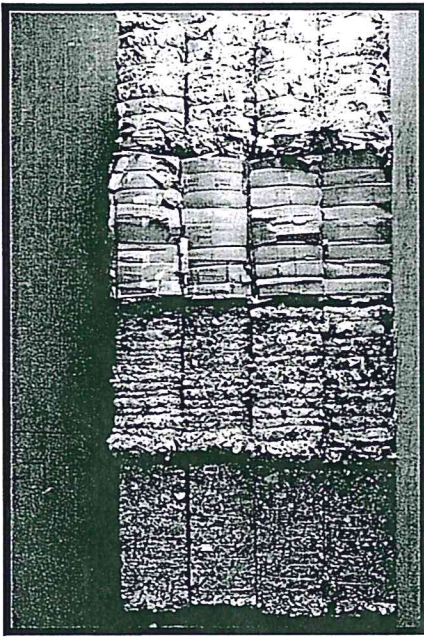


Alternative Daily
Cover @ Landfills



Concrete is recycled and wood chips are composted and used for revegetation and soil erosion projects.

Material Recovery Facilities





Questions?