

El Dorado County Board of Supervisors

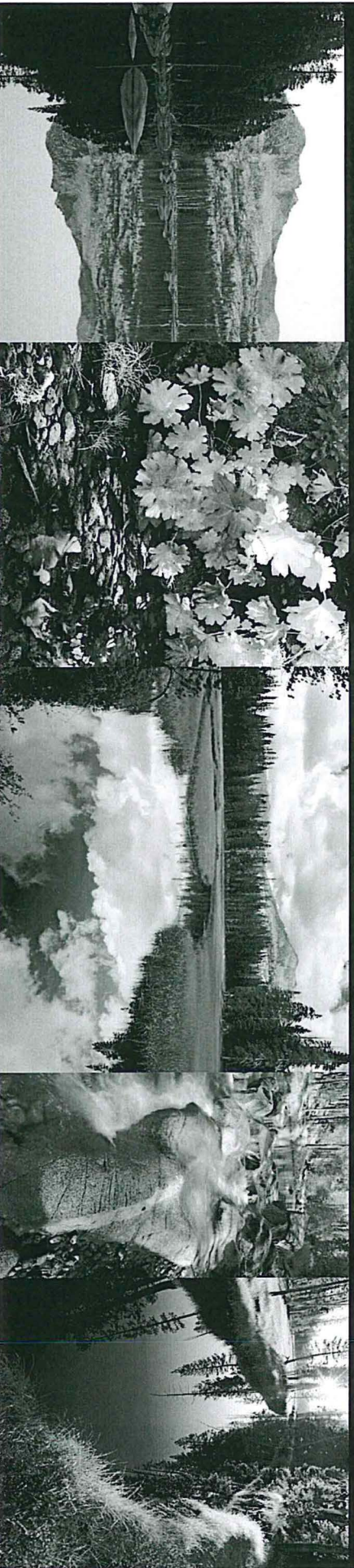


August 25, 2014

Coordinated Resources Management

MARK EGBERT

EL DORADO COUNTY & GEORGETOWN DIVIDE RESOURCE
CONSERVATION DISTRICTS

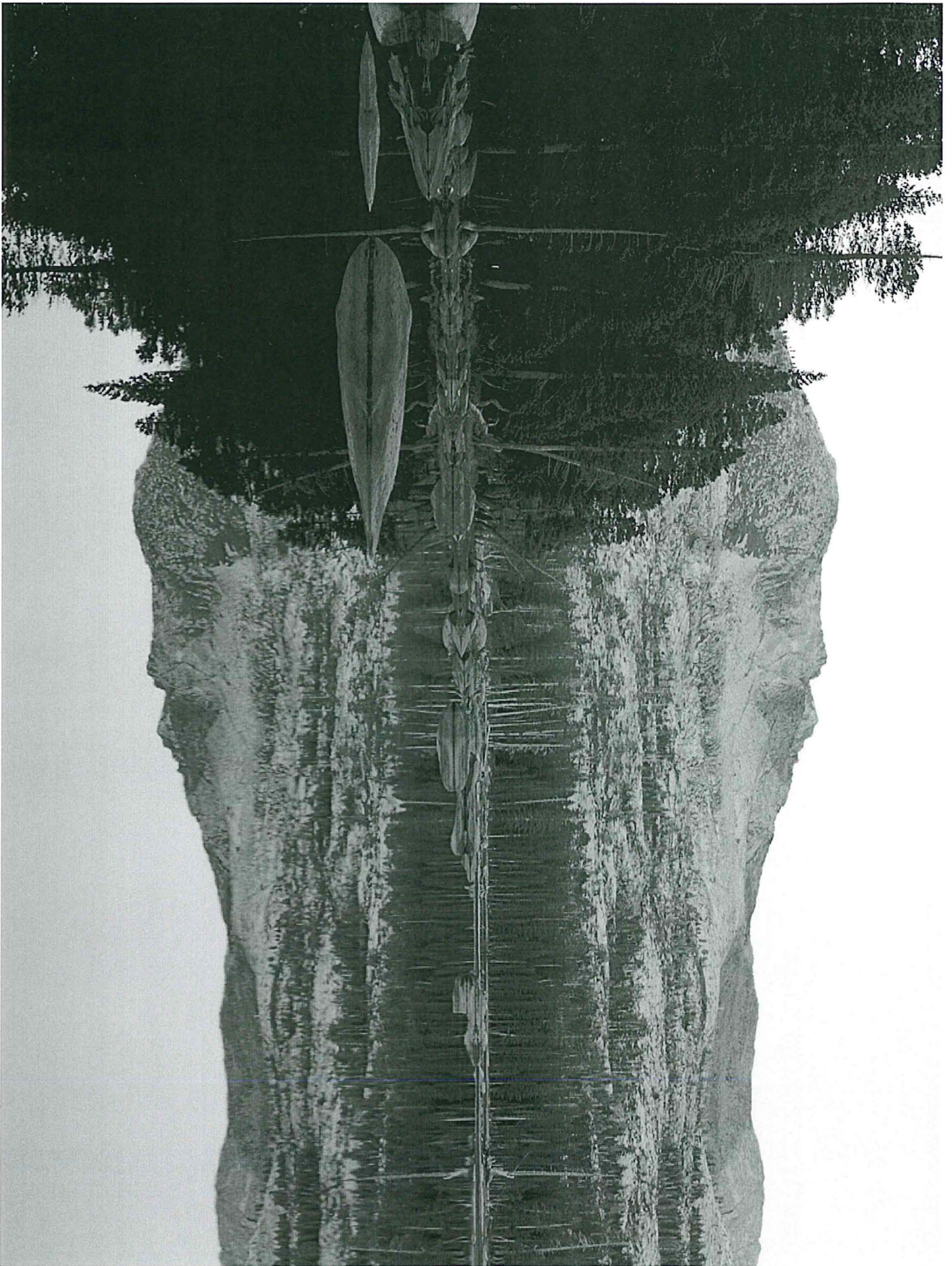




El Dorado County & Georgetown Divide Resource Conservation Districts

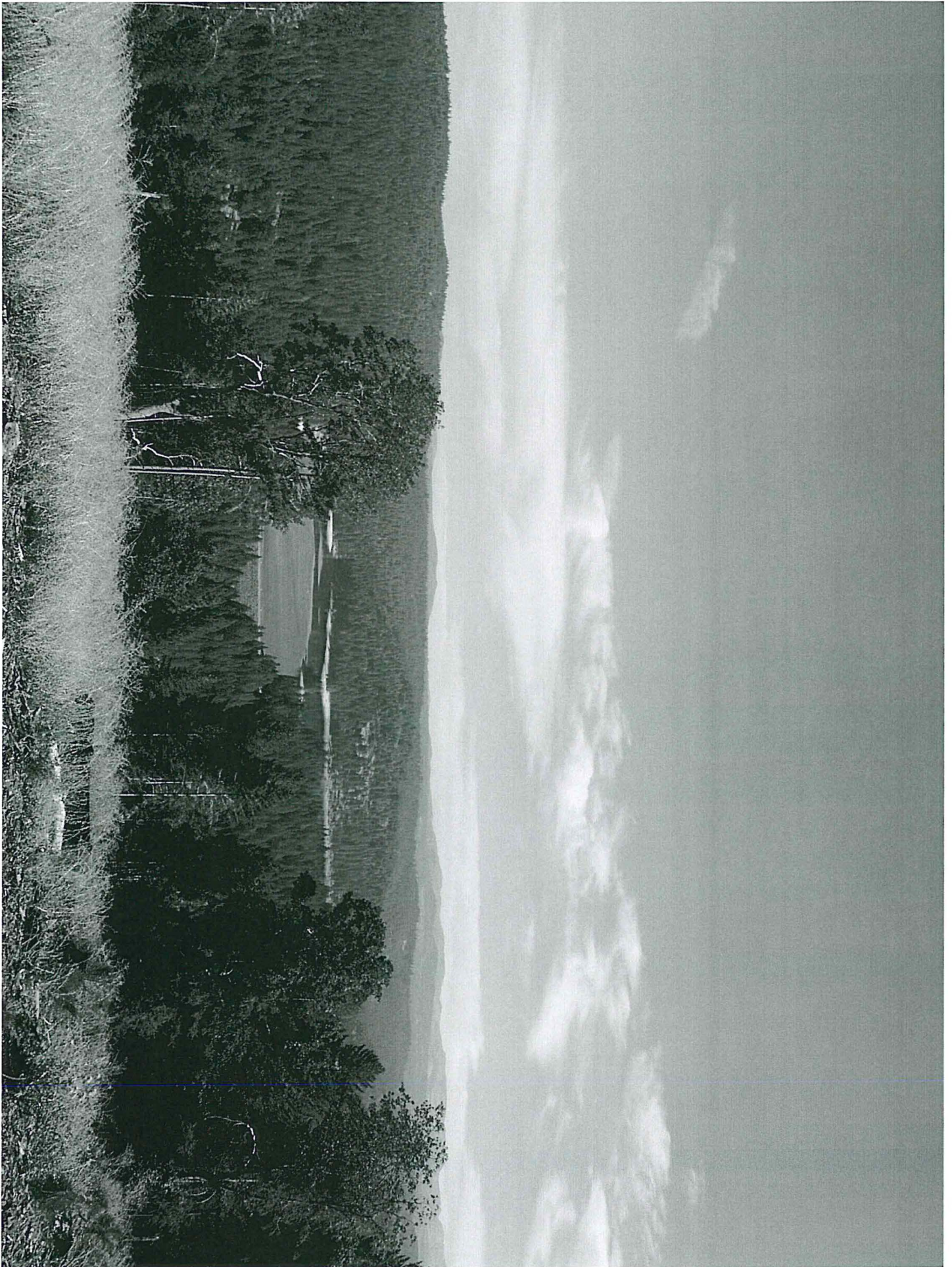
Mission :

**“ promote the responsible
stewardship of natural resources
within our boundaries”**

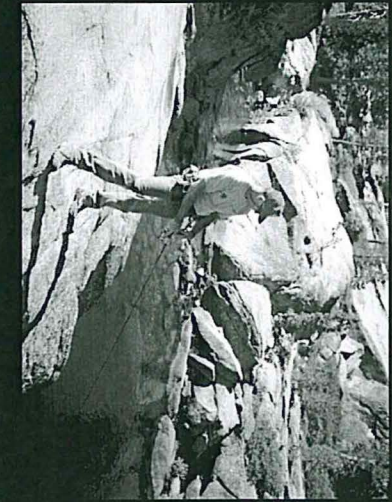








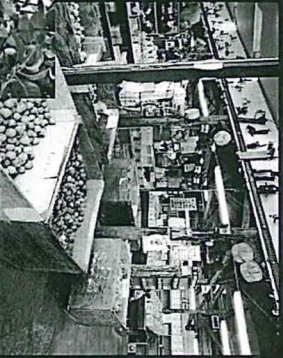
Sierra forests provide:
Water
Biodiversity
Wildlife Habitat
Recreation
Scenic Landscapes
Alternative Forms of Power
Food and Fiber
Carbon sequestration and storage opportunities



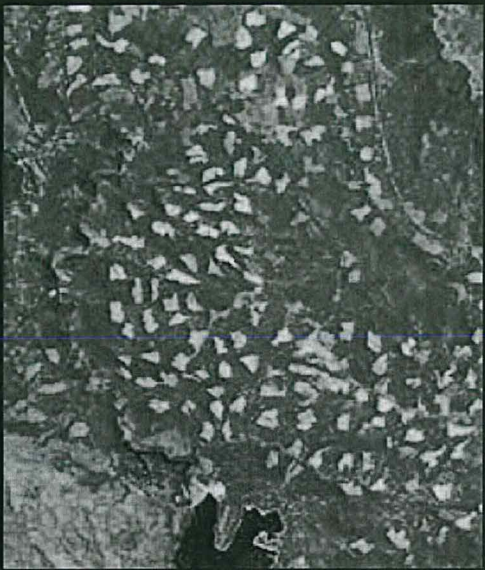
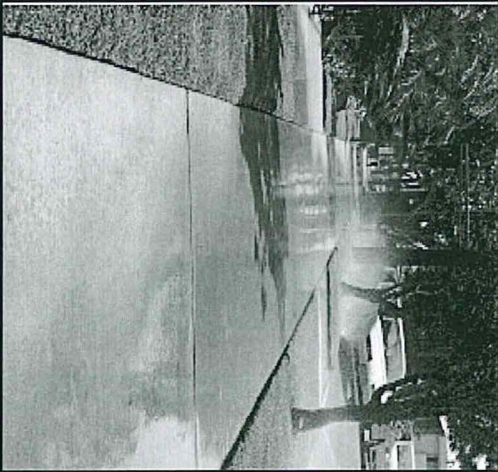
Forests, Farms and Ranches - our working landscapes

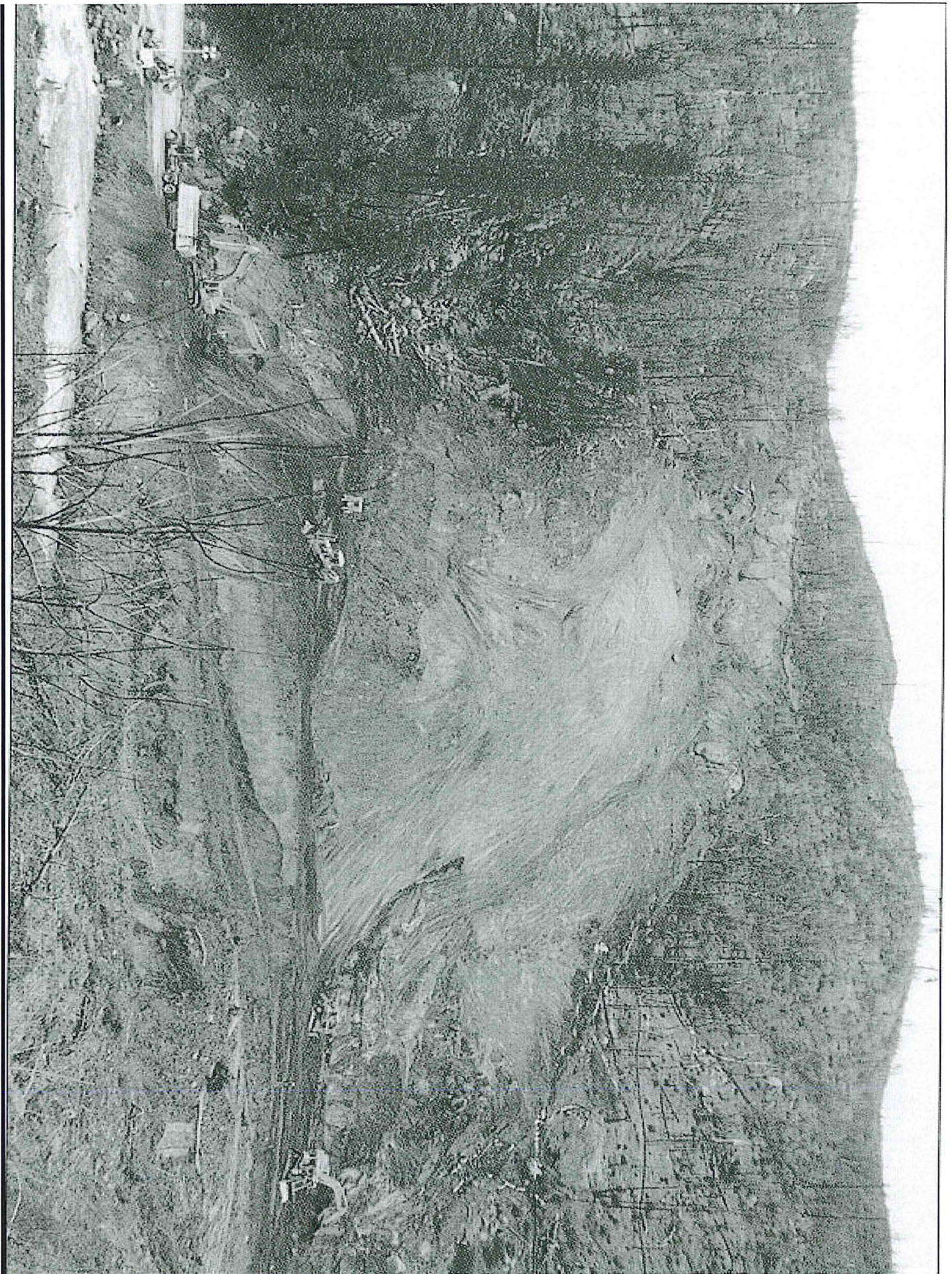
-embody real long-term wealth in the
Sierra Nevada.

-(*Sierra Business Council - Investing for Prosperity*).

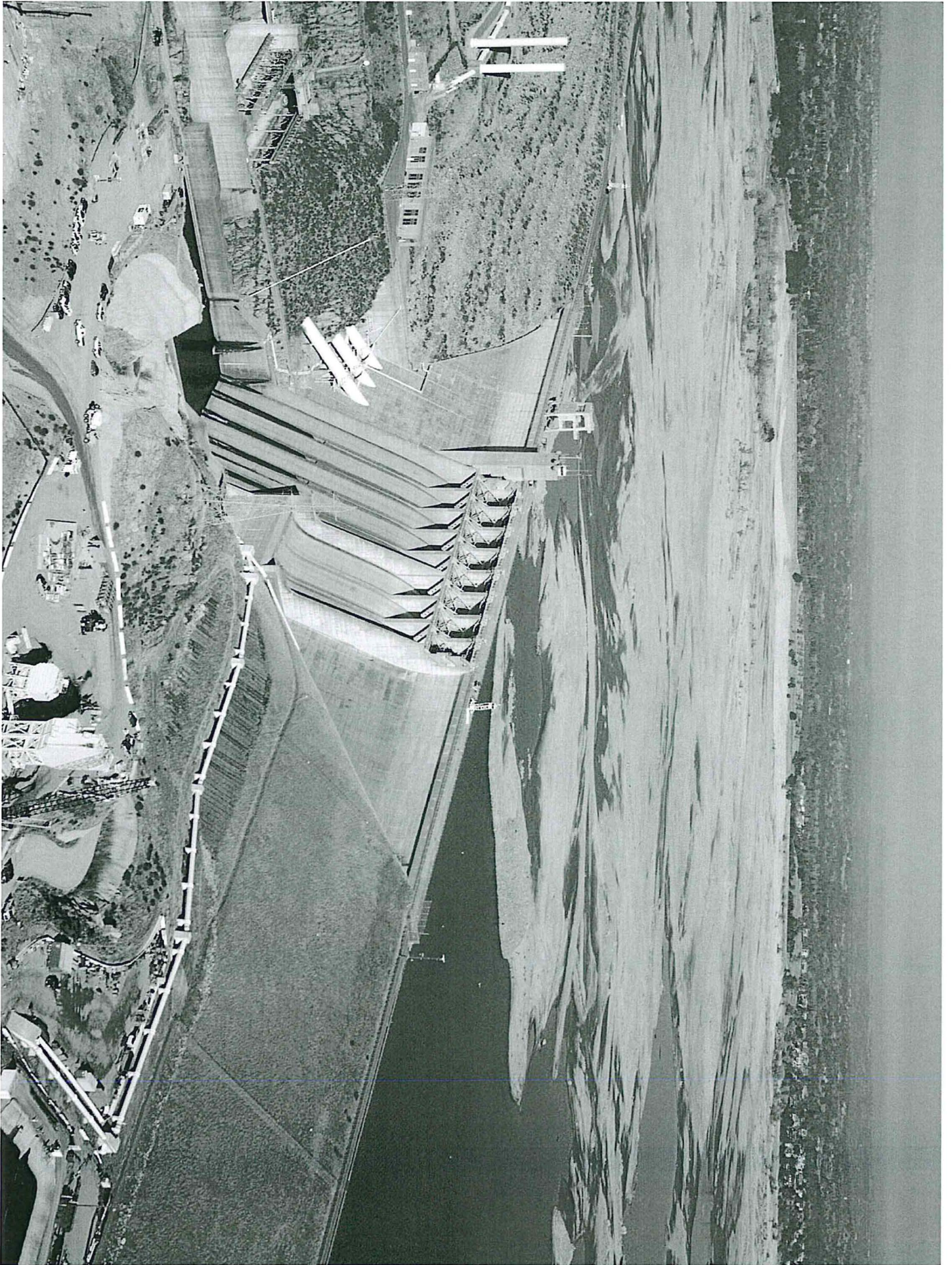


Diverse Resource Issues









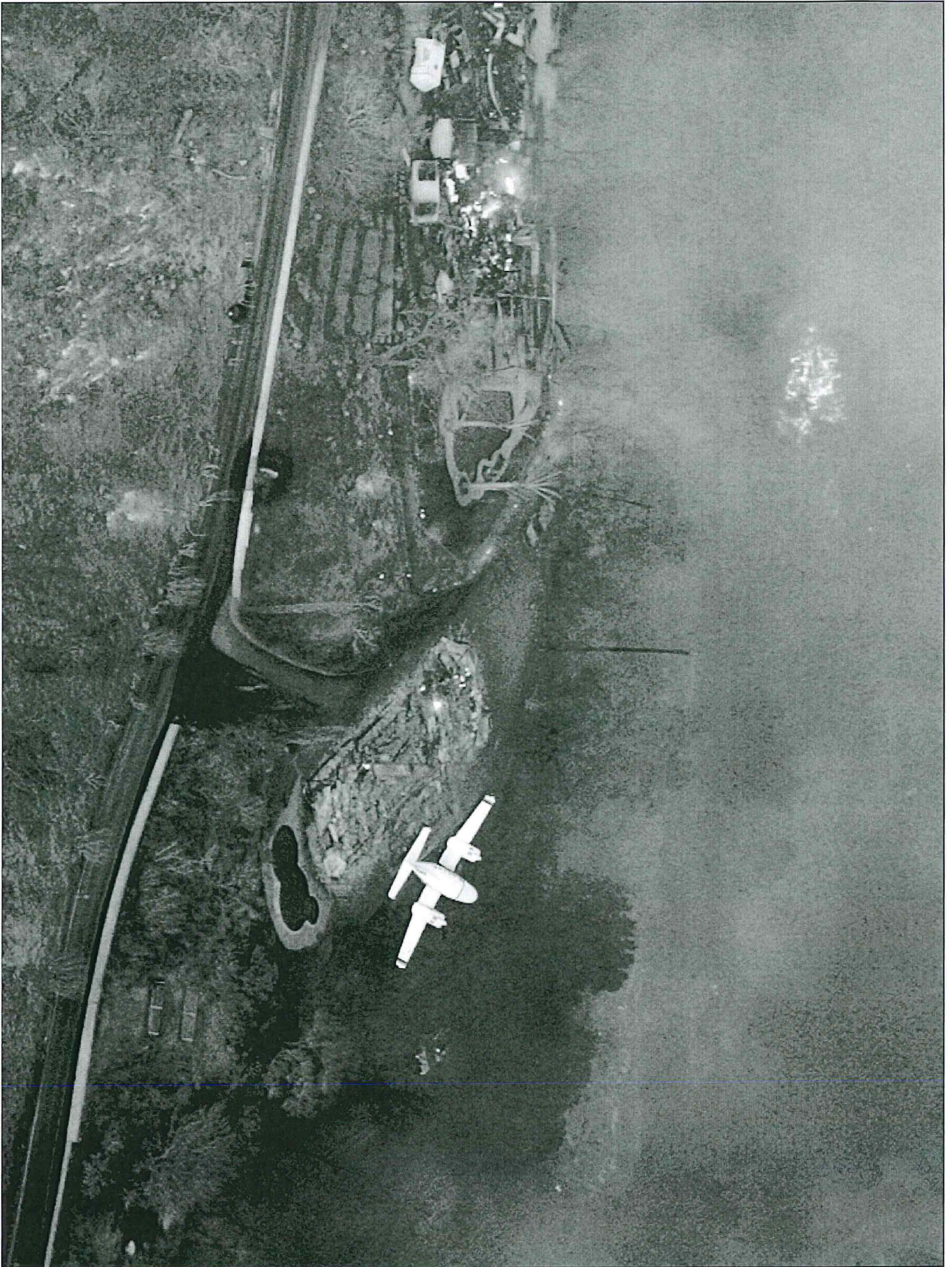
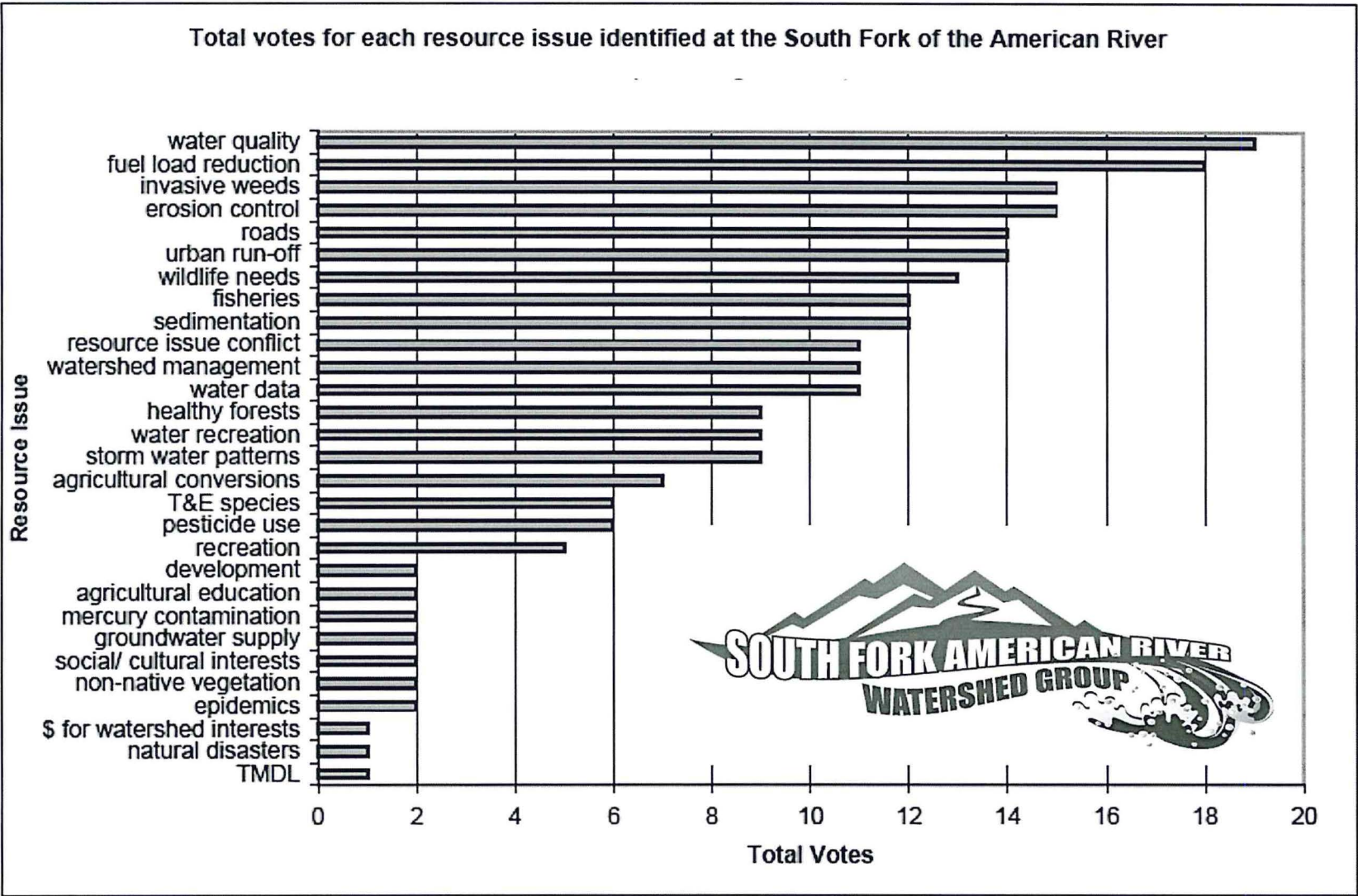


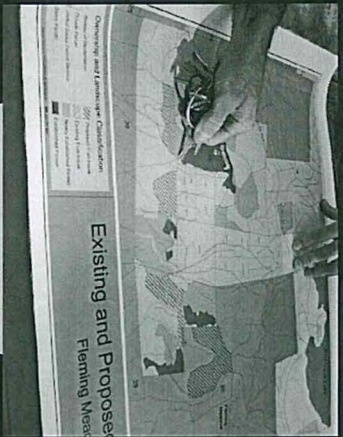
Figure 1.3 Priority Issues





ASSESSMENT

*Identify
concerns and
areas of priority*



EVALUATION

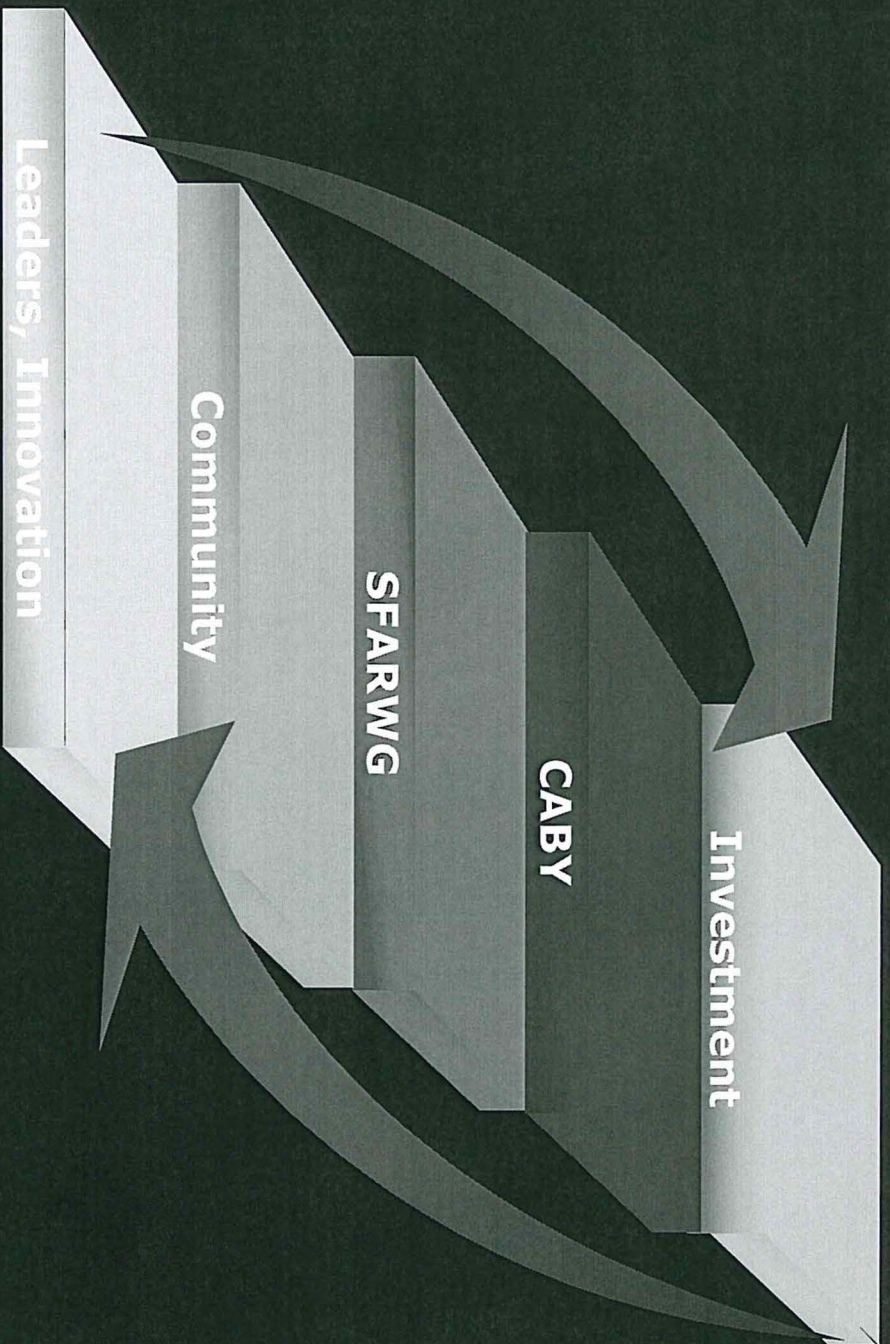
*Identify
Opportunities*

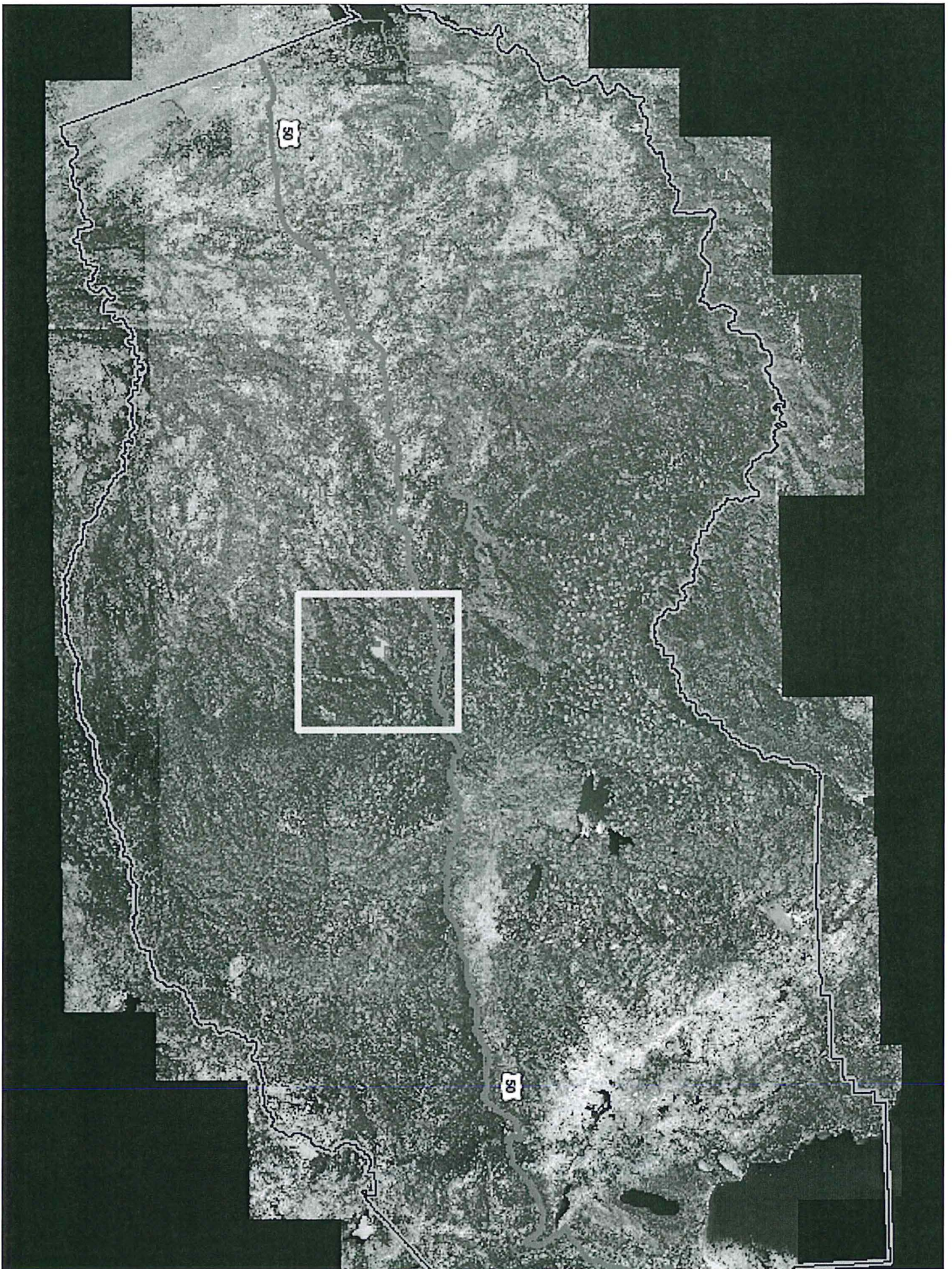


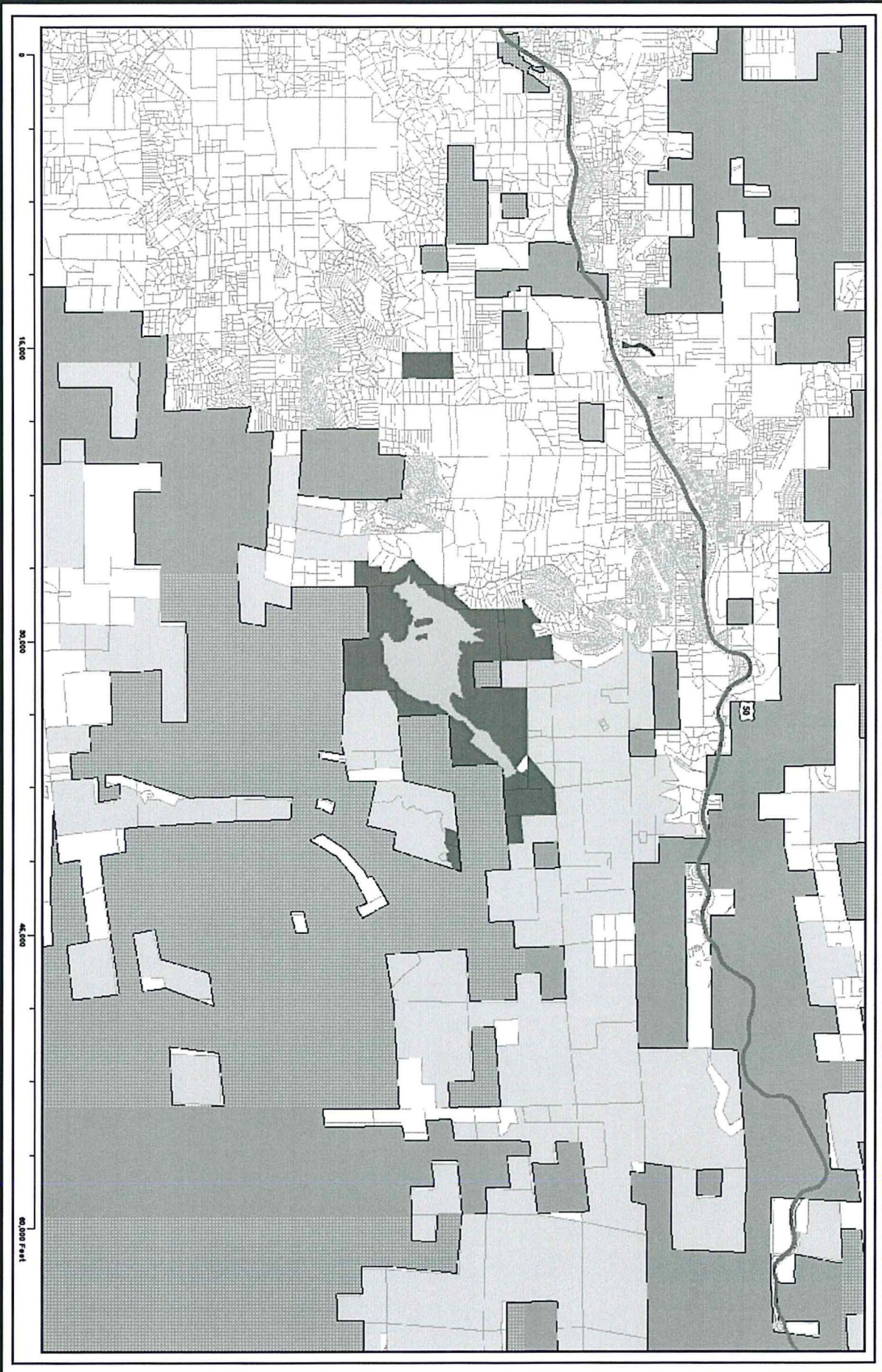
STEWARDSHIP

Implementation

Collaborative Resources Management

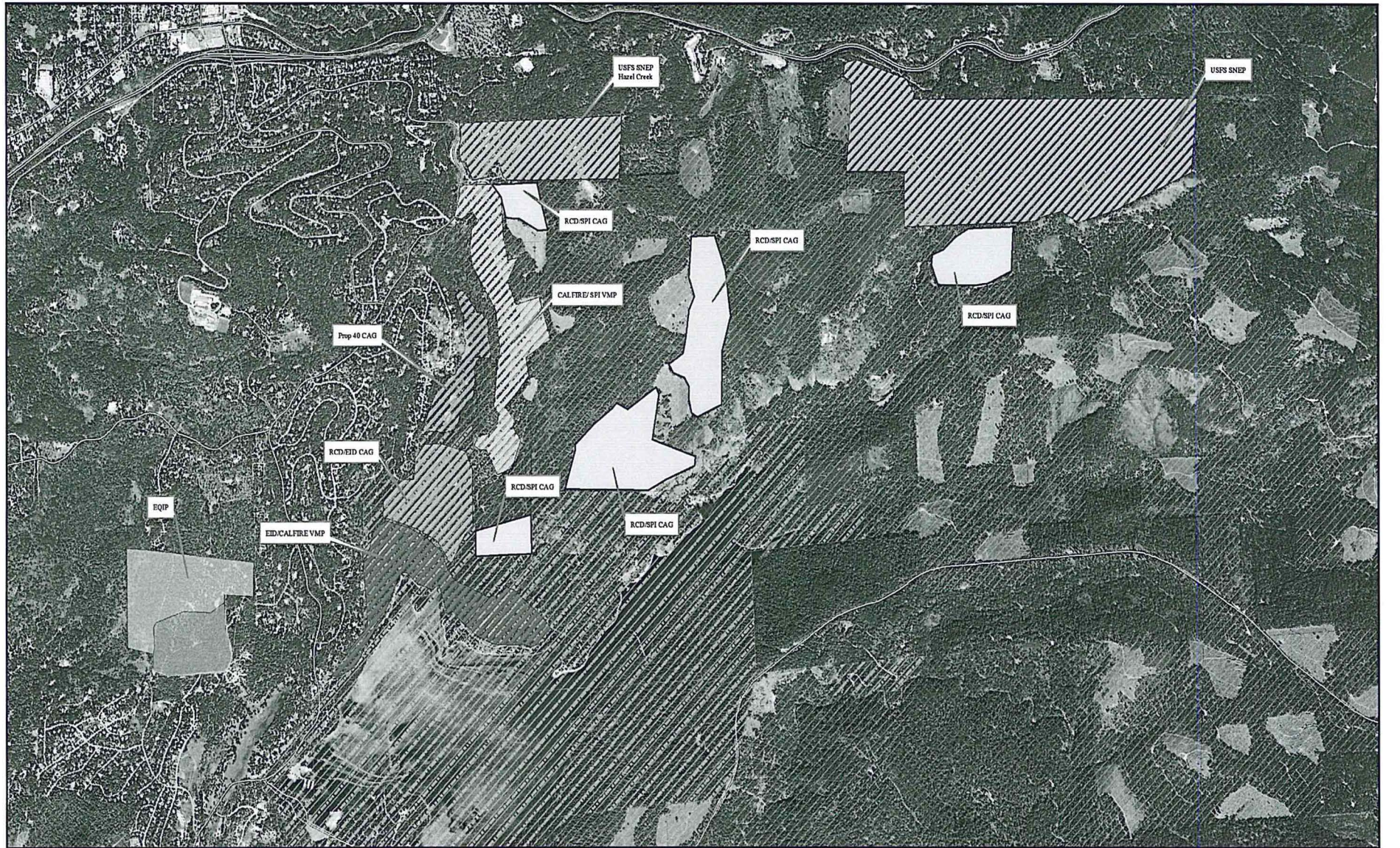










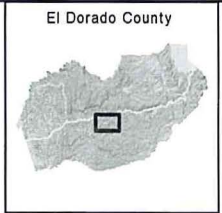


0 8,100 16,200 24,300 32,400 Feet

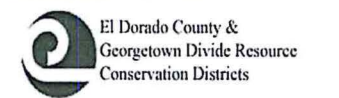
**Forest Stewardship Workshop
June 26, 2009**

- | | | | |
|------------------------------------|-----------------------|---------------------|--------------|
| USFS Land | Gold Ridge Forest CAG | SPI/RCD/CALFIRE CAG | County Roads |
| El Dorado Irrigation District Land | EQIP 2009 | SP/CALFIRE VMP | |
| Sierra Pacific Industries Land | EQIP 2007 | EID/RCD/CALFIRE CAG | |
| | | EID/CALFIRE VMP | |
| | | USFS SNEP | |

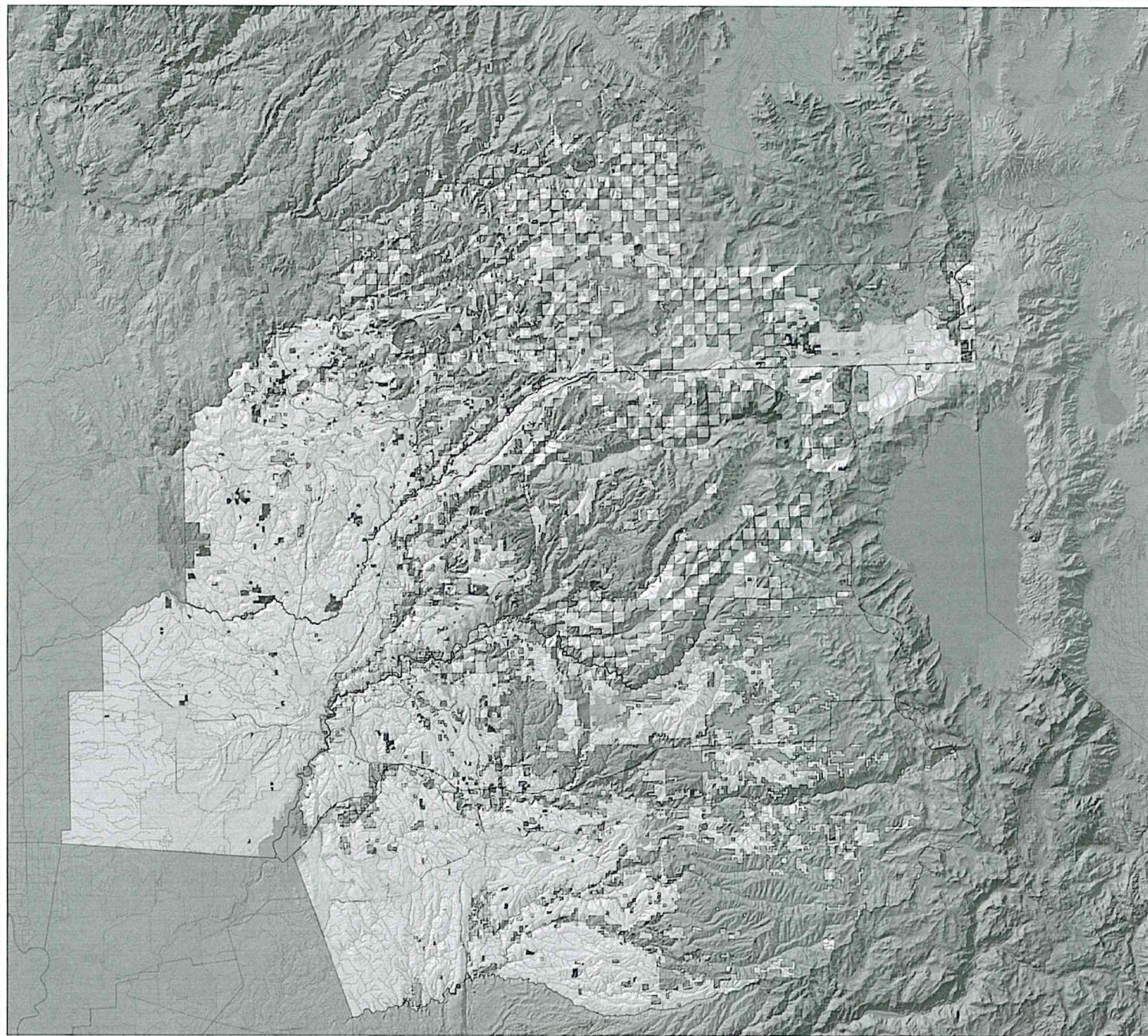
Photographed By:
National Agricultural Imaging Program (NAIP)
2005



The Resource Conservation Districts (RCD) make no representations or warranties regarding the accuracy of data or maps. The RCD shall not be liable under any circumstances for any direct, special incidental, or consequential damages with respect to any user or third party on account of or arising from the use of data or maps.



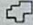


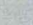




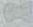


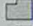



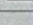
Created by: Mark Egbert
Date: June 28, 2009
Contact: 100 Forni Road, Placerville CA (530) 295-5830

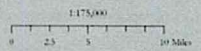


Resource Conservation Districts

Georgetown Divide
 El Dorado County
 Nevada County
 Placer County

~ Fuels Reduction Projects ~

-  RCD Boundaries
 -  CDF - Fuel Breaks
 -  Forest Service
 -  Prop 40 - CAG
 -  CDF - Prop 40 CFIP
 -  NRCS - EQIP
 -  Cities
 -  Highways
 -  Waterbodies
 -  Minor Rivers
 -  Major Rivers
- Land Ownership**
-  US Forest Service
 -  BLM
 -  Bureau of Reclamation
 -  State
 -  US Fish and Wildlife



The Resource Conservation Districts (RCD) make no representations or warranties regarding the accuracy of data or maps. The RCD shall not be held under any circumstances for any direct, special, incidental, or consequential damages with respect to any use or third party use of or arising from the use of data or maps.

Improving forest and watershed health can:

- * Ensure water supply and improved water quality;
- * Protect wildlife habitat and support biodiversity;
- * Store carbon and combat climate change;
- * Sustain local economies by creating jobs,
- * Producing alternative energy
- * Increasing recreation
- * Producing food and fiber
- * Improve fire resiliency
- * Reduce risk of air pollution and greenhouse gas emissions;
- * Enhance visual aesthetics.

Reforestation Services – Growing trees for our future

L.A. Moran Reforestation Center ceased operations in 2003
Magalia Reforestation Center closed June 30, 2011

NRCS has identified 1,050,000 for the 2012/2013.

USFS 255,000 acres needed reforestation
> 250,000 acres of NIPF.

RCD and USFS partnership to grow seedlings at Placerville Nursery

Goals:

Enhance and sustain forest ecosystems through reforestation efforts that yield better air and water quality, enhanced wildlife habitat, greater biodiversity and ecosystem sustainability, healthier forests, reduced soil erosion, and increased timber production.



Thank you!



MARK EGBERT

EL DORADO COUNTY & GEORGETOWN
DIVIDE RESOURCE CONSERVATION DISTRICTS

Mark.Egbert@ca.usda.gov

