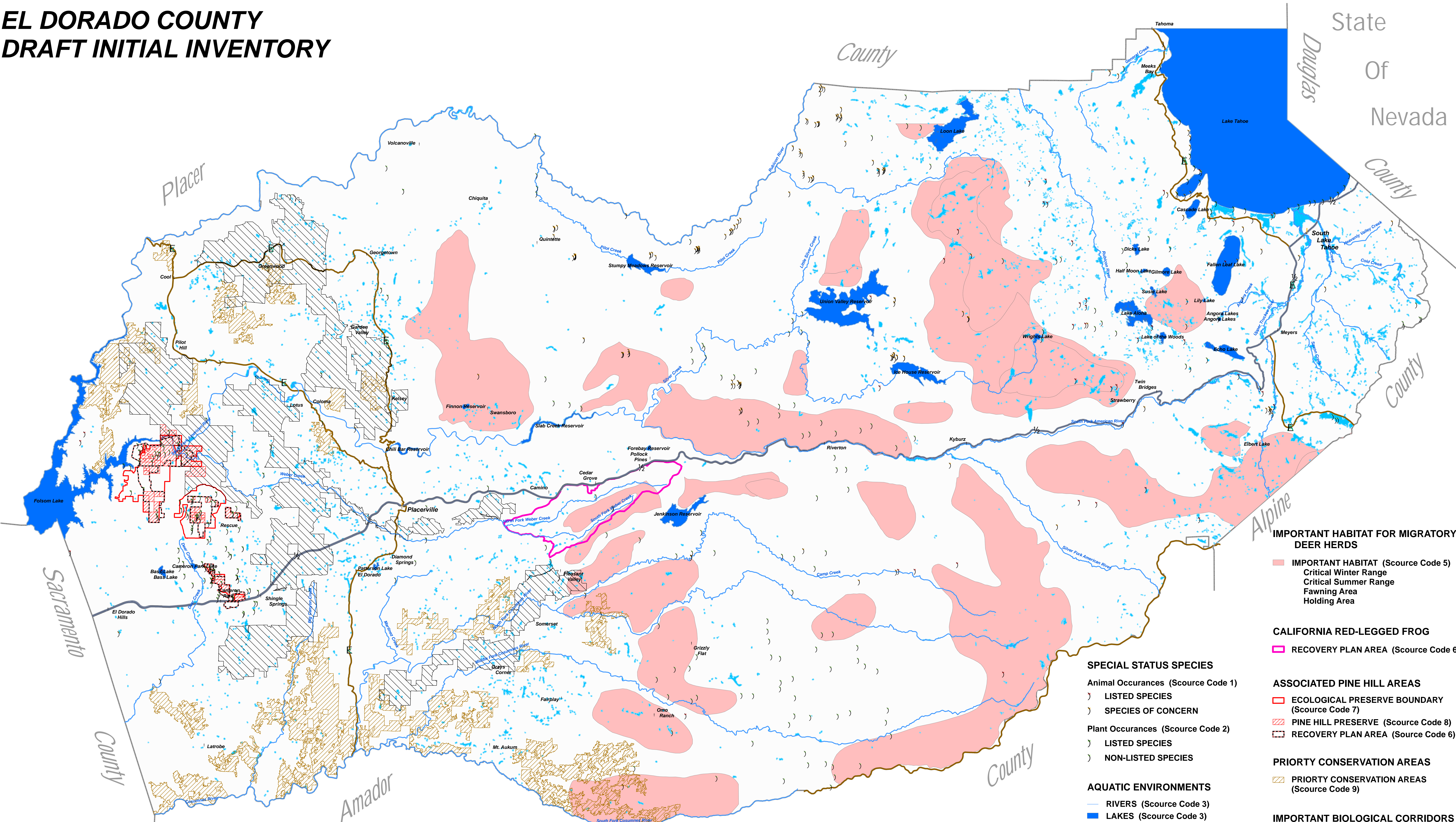


# EL DORADO COUNTY DRAFT INITIAL INVENTORY



**Exhibit 9**

**SPECIAL STATUS SPECIES**

**AQUATIC ENVIRONMENTS**

**WETLAND AND RIPARIAN HABITAT**

**IMPORTANT DEER HABITAT**

**CALIFORNIA RED-LEGGED FROG**

**ASSOCIATED PINE HILL AREAS**

**PRIORITY CONSERVATION AREAS**

**IMPORTANT BIOLOGICAL CORRIDORS**

- IMPORTANT HABITAT FOR MIGRATORY DEER HERDS**
- IMPORTANT HABITAT (Source Code 5)
  - Critical Winter Range
  - Critical Summer Range
  - Fawning Area
  - Holding Area
- CALIFORNIA RED-LEGGED FROG**
- RECOVERY PLAN AREA (Source Code 6)
- ASSOCIATED PINE HILL AREAS**
- ECOLOGICAL PRESERVE BOUNDARY (Source Code 7)
  - PINE HILL PRESERVE (Source Code 8)
  - RECOVERY PLAN AREA (Source Code 6)
- PRIORITY CONSERVATION AREAS**
- PRIORITY CONSERVATION AREAS (Source Code 9)
- IMPORTANT BIOLOGICAL CORRIDORS**
- IMPORTANT BIOLOGICAL CORRIDORS (Source Code 7)

- SPECIAL STATUS SPECIES**
- Animal Occurances (Source Code 1)
  - ) LISTED SPECIES
  - ) SPECIES OF CONCERN
  - Plant Occurances (Source Code 2)
  - ) LISTED SPECIES
  - ) NON-LISTED SPECIES
- AQUATIC ENVIRONMENTS**
- RIVERS (Source Code 3)
  - LAKES (Source Code 3)
  - RIVER AND LAKE BUFFER - 100'
- WETLAND AND RIPARIAN HABITAT**
- WETLANDS (Source Code 4)
  - WETLANDS BUFFER - 100'

**Sources:**

*Note: These data sets are those used in the 2004 General Plan E.I.R. and were provided by EDAW.*

- 1 - CNDDB 2002; EDAW 2003; Gould, pers. comm., 2002
- 2 - CNDDB 2002; EDAW 2003
- 3 - El Dorado County
- 4 - USFWS-NWI 2000; EDAW
- 5 - State Of California - Dept. Of Fish and Game
- 6 - USFWS
- 7 - El Dorado County - 2004 General Plan
- 8 - BLM
- 9 - EN2

**DISCLAIMER**

THIS DEPICTION WAS COMPILED FROM UNVERIFIED PUBLIC AND PRIVATE SOURCES AND IS ILLUSTRATIVE ONLY. NO REPRESENTATION IS MADE AS TO ACCURACY OF THIS INFORMATION. PARCEL BOUNDARIES ARE PARTICULARLY UNRELIABLE. USERS MAKE USE TO THIS INFORMATION AT THEIR OWN RISK.

**NOTES:**

LAYER INFORMATION MAY COVER ADDITIONAL AREAS OUTSIDE OF THE DISPLAYED AREA.

MAP PREPARED BY: BOB BERRY, DATE: 03/26/2008

EL DORADO COUNTY SURVEYOR'S DIVISION  
PHONE (530) 621-6511 FAX (530) 626-8731



Map Created By:  
El Dorado County Surveyor's Office  
GIS Division  
300 Fair Lane  
Placerville, CA 95667  
(530) 621-6511  
<http://co.el-dorado.ca.us/surveyor>

