

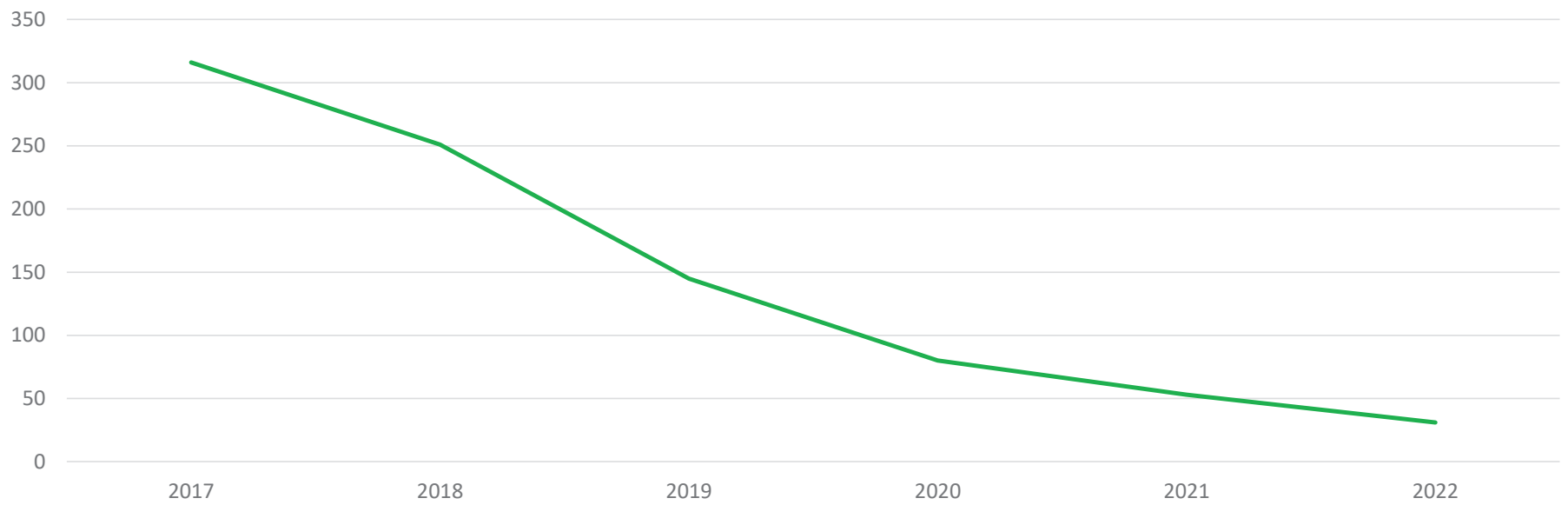


El Dorado County
Sheriff's Office
Homeless Outreach
Team (HOT)

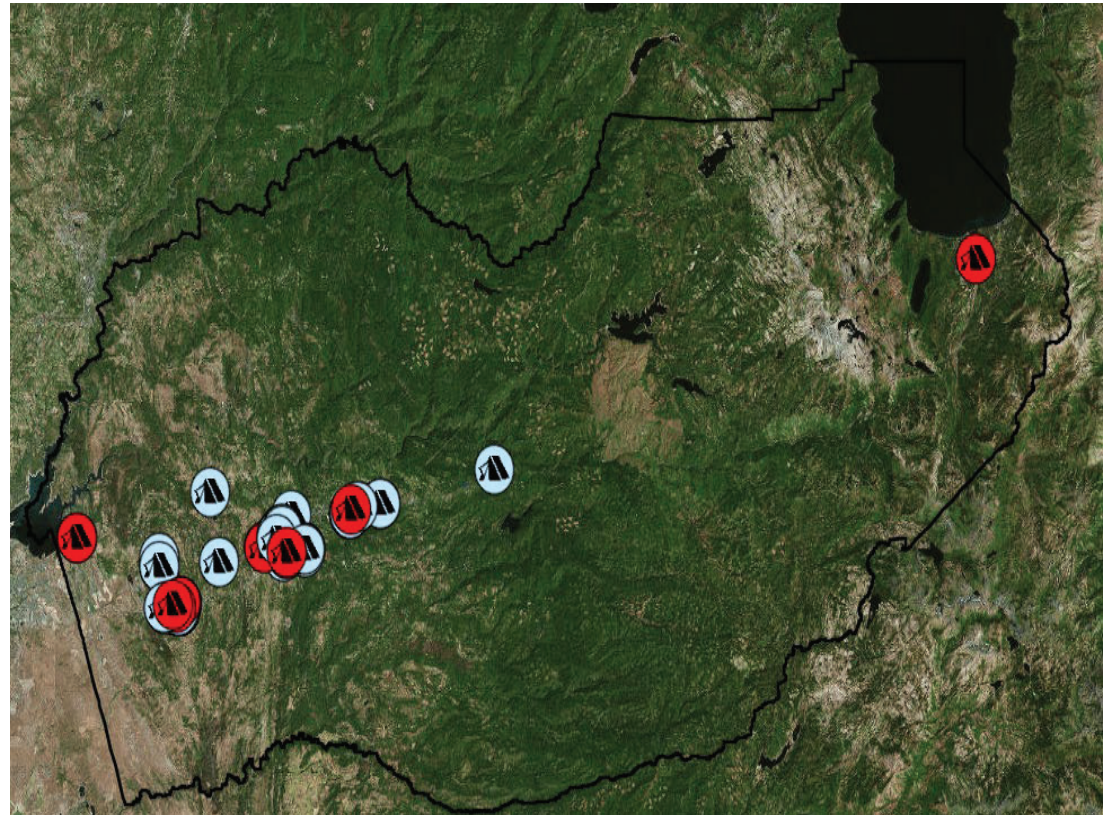
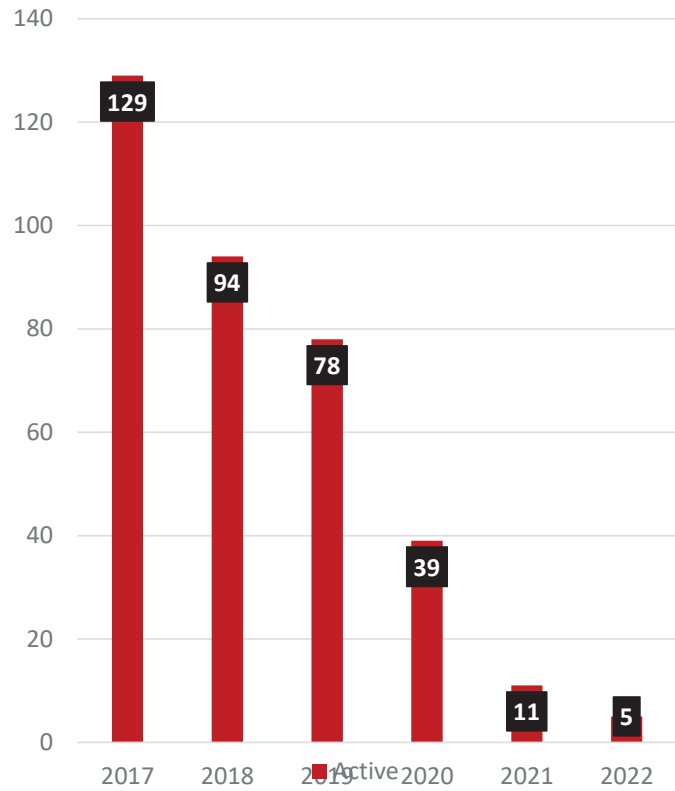
History

- HOT is composed of a three-person team; two Deputies and one Sergeant
- HOT's primary focus was to identify, document and begin working with the unsheltered population of homeless within the county
- Began targeting specific risk factors to the county such as fire and environmental resource damage
- HOT was founded in July of 2017 and initially identified approximately 316 unsheltered homeless within the county

Homeless Population El Dorado County



Homeless Encampments El Dorado County

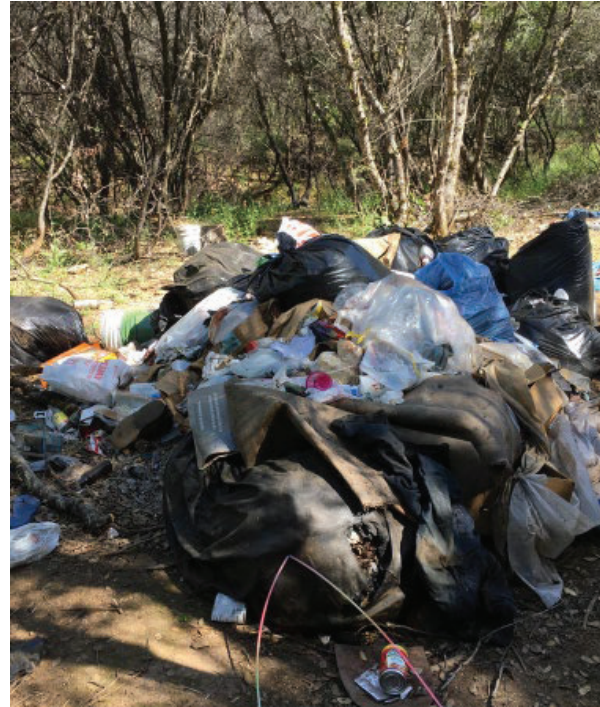


Environmental Impact

Human waste
Drug paraphernalia
Trash
Landscape devastation
Fire



Economic Impact



- **Private Property**: Cost associated to trash removal from abandoned homeless camps are extended to the property owner
- **County Property**: Costs associated to trash removal from homeless camps are extended to the county/taxpayers

Crime Prevention Through Environmental Design



HOT Collaboration

- Trained multiple law enforcement agencies regarding homeless outreach
- Partnership:
 - PPD
 - SLTPD
 - Cal Fire
 - Probation
 - Marshall Hospital
 - HHSA
 - Non-profit organizations
 - DMV
 - Social Security
 - Veteran Affairs



Palmer Drive Camp Remnant



Additional
Palmer
Drive Camp
Remnant



Broadway, Placerville

5/5/2022

