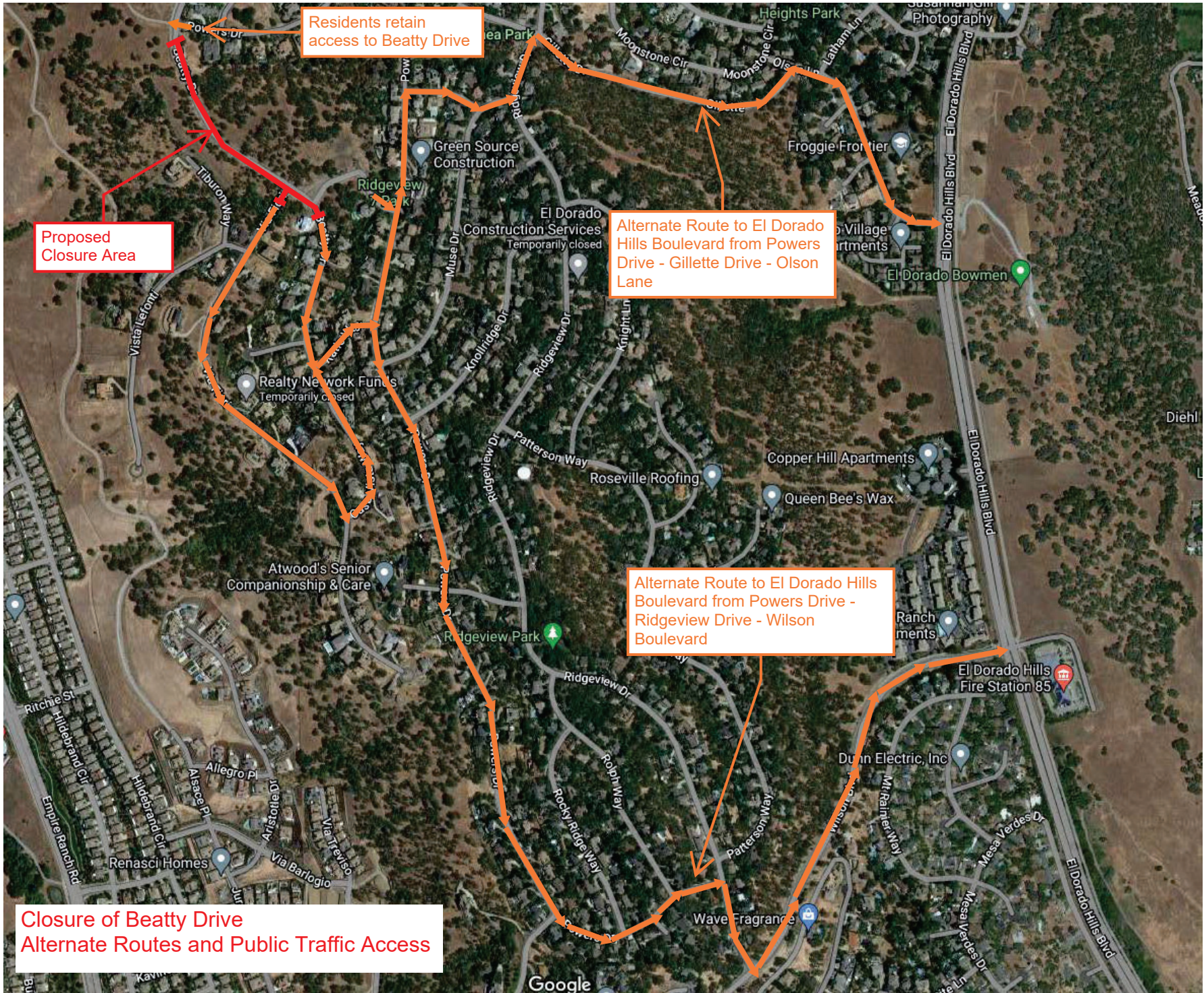


Closure of Beatty Drive





Proposed Closure Area

Residents retain access to Beatty Drive

Alternate Route to El Dorado Hills Boulevard from Powers Drive - Gillette Drive - Olson Lane

Alternate Route to El Dorado Hills Boulevard from Powers Drive - Ridgeview Drive - Wilson Boulevard

Closure of Beatty Drive
Alternate Routes and Public Traffic Access