

MAP OF PROPOSED BOUNDARYS OF COMMUNITY FACILITIES DISTRICT NO. 2015-____ (EAST RIDGE VILLAGE)

COUNTY OF EL DORADO STATE OF CALIFORNIA
THE SOUTH 1/2 OF LOTS 1 & 2 OF SECTION 7, TOWNSHIP 9 NORTH, RANGE 9 EAST, M.D.M.
AND PARCEL 8 OF P.M. 47-97 AND PARCEL 2 OF P.M. 51-29 AND TRACT A OF P.M. 51-29
LYING IN SECTIONS 12 & 13, T.9 N., R. 8 E. AND SECTIONS 7, 18 & 19, T.9 N., R.9 E., M.D.M.

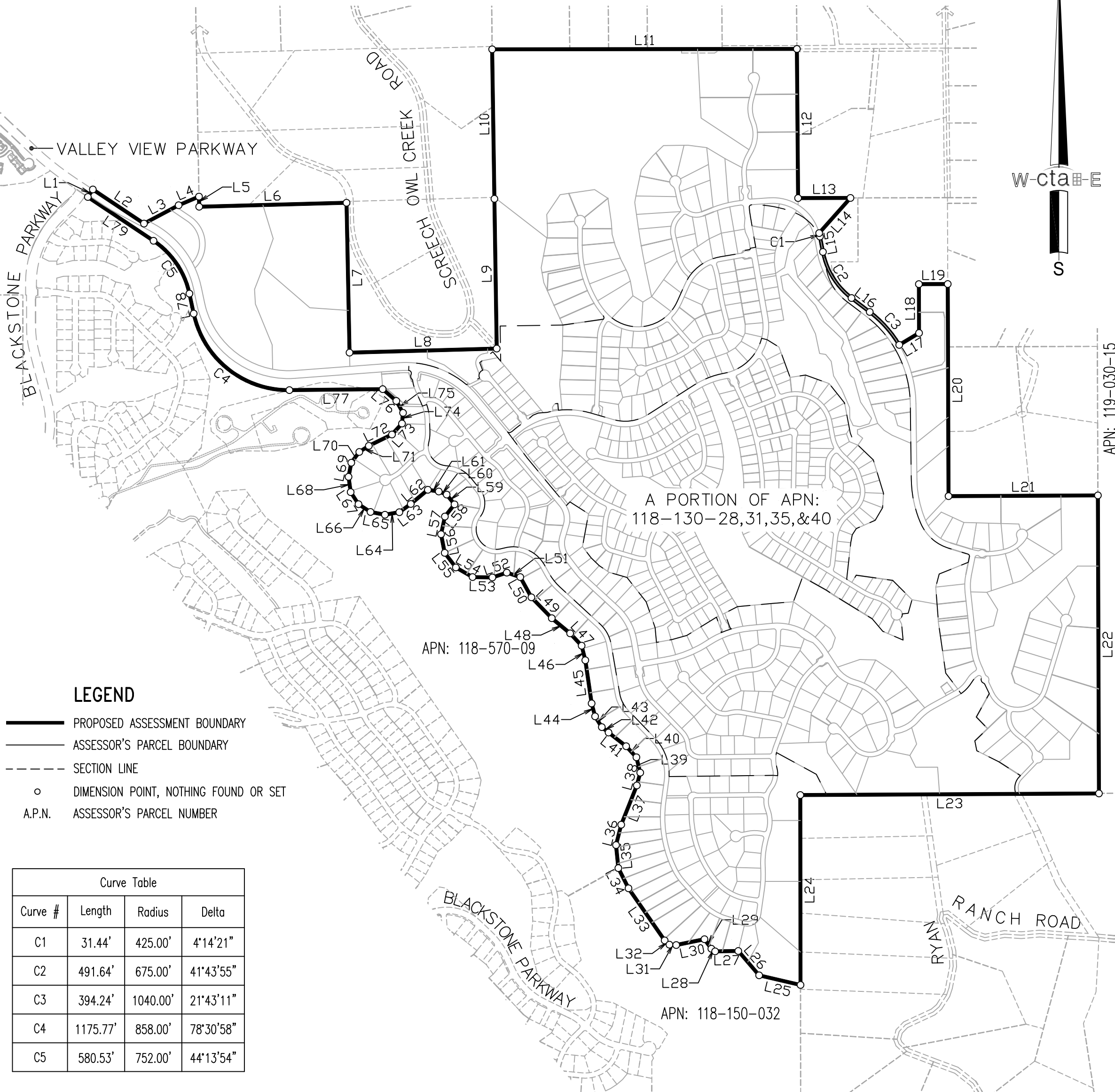
AUGUST, 2015 SHEET 1 OF 1 SCALE: 1"=800'

cta Engineering & Surveying
Civil Engineering • Land Surveying • Land Planning
3233 Monier Circle, Rancho Cordova, CA 95742
T (916) 638-0919 • F (916) 638-2479 • www.ctaes.net

BASIS OF BEARINGS

THE BASIS OF BEARINGS FOR THIS MAP ARE IDENTICAL TO THAT OF "THE LARGE LOT FINAL MAP OF WEST VALLEY VILLAGE", S.D. J-43.

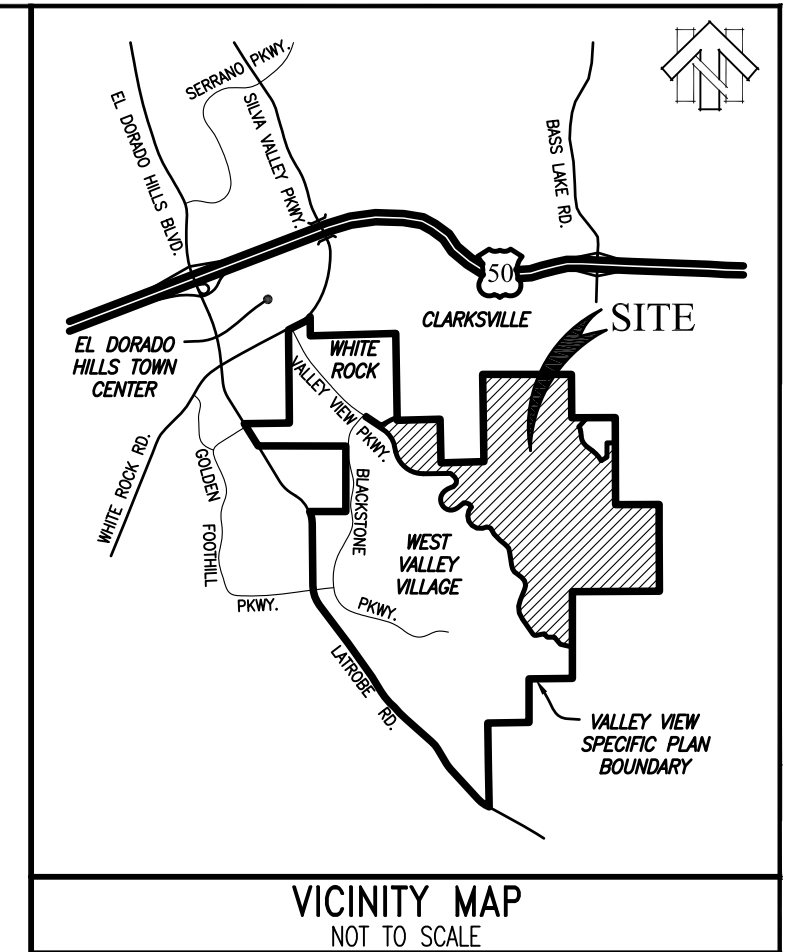
Line Table			Line Table		
Line #	Direction	Length	Line #	Direction	Length
L1	S33°41'09"W	80.00'	L41	S52°06'43"E	197.57'
L2	N56°18'51"W	544.86'	L42	S51°18'32"E	76.80'
L3	S62°05'42"W	347.67'	L43	S32°00'59"E	112.49'
L4	S67°00'54"W	195.71'	L44	S14°57'08"E	118.47'
L5	N0°59'29"W	89.93'	L45	S8°18'49"E	386.95'
L6	S88°27'39"W	1306.55'	L46	S14°10'40"E	132.81'
L7	N1°09'32"W	1328.61'	L47	S42°54'24"E	149.59'
L8	S88°25'20"W	1305.11'	L48	S50°30'53"E	211.00'
L9	S0°53'21"E	1327.79'	L49	S44°15'20"E	258.54'
L10	S0°51'18"E	1325.24'	L50	S28°52'58"E	205.04'
L11	S89°56'04"W	2701.39'	L51	S71°49'06"E	125.54'
L12	N0°26'12"W	1321.83'	L52	N71°34'20"E	134.70'
L13	S89°51'45"W	464.50'	L53	S88°53'17"E	175.54'
L14	N41°41'50"E	417.23'	L54	S60°07'26"E	170.96'
L15	N10°56'34"W	138.80'	L55	S37°21'40"E	162.86'
L16	N52°40'30"W	203.42'	L56	S11°05'14"E	168.35'
L17	S59°02'41"W	204.79'	L57	S12°16'11"W	160.36'
L18	S0°12'21"E	433.30'	L58	S38°23'06"W	137.48'
L19	S89°47'39"W	256.00'	L59	S38°37'25"E	111.56'
L20	N0°12'21"W	1879.98'	L60	S68°56'02"E	75.11'
L21	S89°43'26"W	1324.21'	L61	S80°59'51"E	97.90'
L22	N0°11'50"W	2641.78'	L62	N50°14'47"E	196.96'
L23	N89°41'52"E	2647.14'	L63	N54°18'59"E	124.72'
L24	N0°04'04"W	1683.53'	L64	N79°58'16"E	129.84'
L25	S76°52'43"E	376.84'	L65	S79°07'08"E	130.20'
L26	S40°37'24"E	283.87'	L66	S57°03'43"E	126.56'
L27	N89°04'32"E	205.16'	L67	S33°05'26"E	127.90'
L28	S55°01'32"E	40.85'	L68	S7°50'33"E	136.95'
L29	S35°54'36"E	104.21'	L69	S11°08'27"W	127.25'
L30	N78°20'53"E	255.72'	L70	S36°35'49"W	118.78'
L31	S87°00'33"E	60.20'	L71	S57°22'46"W	100.28'
L32	S48°10'47"E	56.67'	L72	S63°51'53"W	228.50'
L33	S34°45'26"E	562.25'	L73	S42°27'13"W	131.42'
L34	S26°42'46"E	200.27'	L74	S5°39'59"W	95.45'
L35	S5°42'47"E	205.40'	L75	S29°27'04"E	121.60'
L36	S14°15'36"W	186.17'	L76	S49°11'34"E	159.29'
L37	S21°40'47"W	374.60'	L77	N89°24'04"E	827.05'
L38	S15°00'31"W	117.28'	L78	S12°04'57"E	181.23'
L39	S14°02'31"E	140.45'	L79	S56°18'51"E	699.88'
L40	S42°48'36"E	133.66'			



LEGEND

- PROPOSED ASSESSMENT BOUNDARY
- ASSESSOR'S PARCEL BOUNDARY
- SECTION LINE
- DIMENSION POINT, NOTHING FOUND OR SET
- A.P.N. ASSESSOR'S PARCEL NUMBER

Curve Table			
Curve #	Length	Radius	Delta
C1	31.44'	425.00'	4°14'21"
C2	491.64'	675.00'	41°43'55"
C3	394.24'	1040.00'	21°43'11"
C4	1175.77'	858.00'	78°30'58"
C5	580.53'	752.00'	44°13'54"



CLERK'S FILING CERTIFICATE

FILED IN THE OFFICE OF THE CLERK OF THE BOARD OF SUPERVISORS THIS _____ DAY OF _____, 20____.

JAMES S. MITRISIN
CLERK OF THE BOARD OF SUPERVISORS
COUNTY OF EL DORADO, CALIFORNIA

BY: _____

CLERK'S CERTIFICATE OF BOARD APPROVAL

I HEREBY CERTIFY THAT THE WITHIN MAP SHOWING PROPOSED BOUNDARIES OF COMMUNITY FACILITIES DISTRICT NO. 2015-____ (EAST RIDGE VILLAGE) OF THE COUNTY OF EL DORADO, STATE OF CALIFORNIA, WAS APPROVED BY THE BOARD OF SUPERVISORS OF THE COUNTY OF EL DORADO AT A REGULAR MEETING THEREOF, HELD ON THE ____ DAY OF _____, 20____, BY ITS RESOLUTION NO. _____.

JAMES S. MITRISIN
CLERK OF THE BOARD OF SUPERVISORS
COUNTY OF EL DORADO, CALIFORNIA

BY: _____

RECORDER'S STATEMENT

FILED THIS _____ DAY OF _____, 20____ AT _____, IN BOOK _____ OF MAPS OF ASSESSMENT AND COMMUNITY FACILITIES DISTRICTS, AT PAGE _____, IN THE OFFICE OF THE COUNTY RECORDER OF THE COUNTY OF EL DORADO, STATE OF CALIFORNIA.

DOCUMENT NO. _____

WILLIAM E. SCHULTZ
COUNTY RECORDER, CLERK
COUNTY OF EL DORADO, CALIFORNIA

BY: _____
DEPUTY