



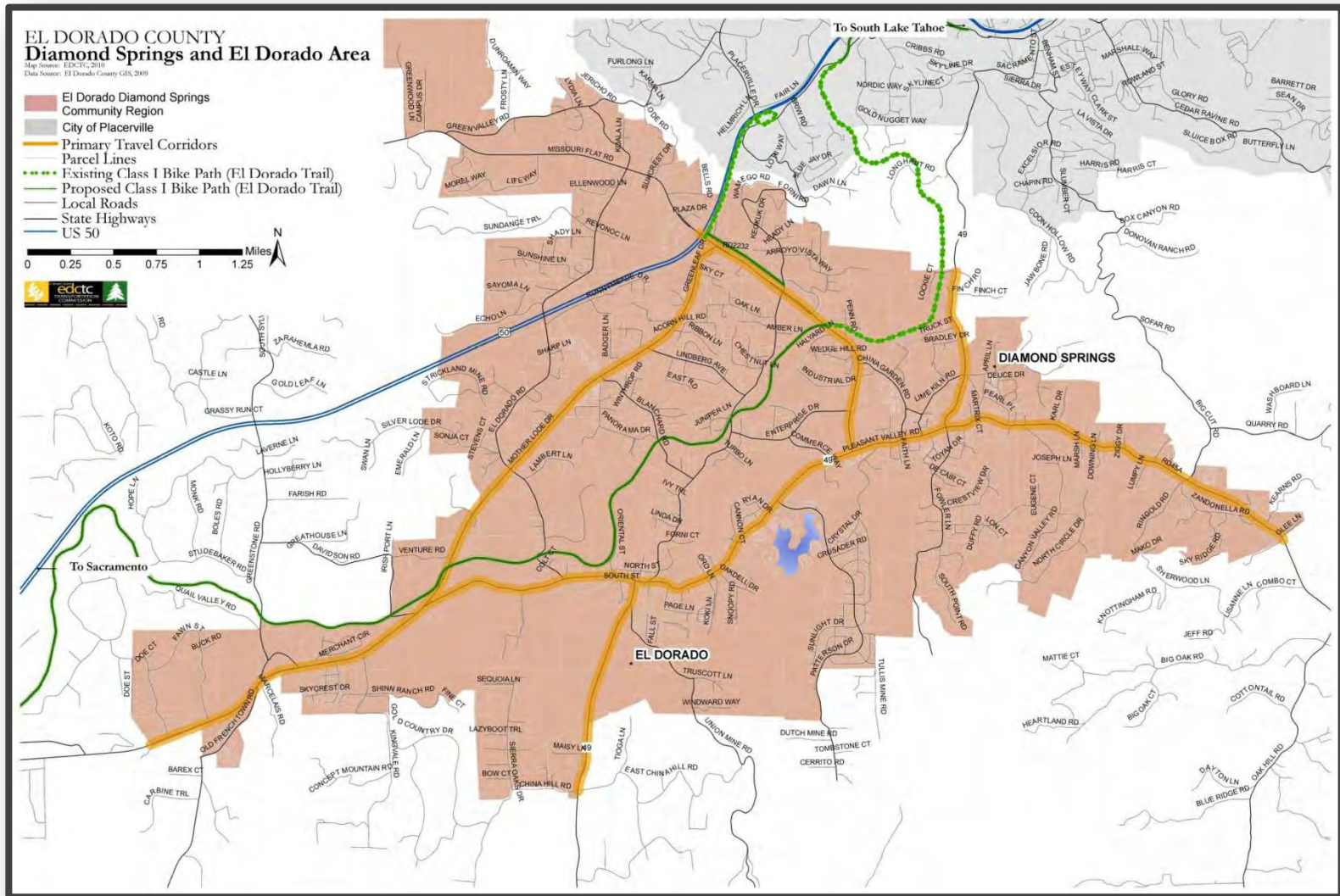
Diamond Springs and El Dorado Mobility and Livable Community Plan

El Dorado County Planning Commission Presentation
February 13, 2014





Community Transportation Plan Area





Community Values

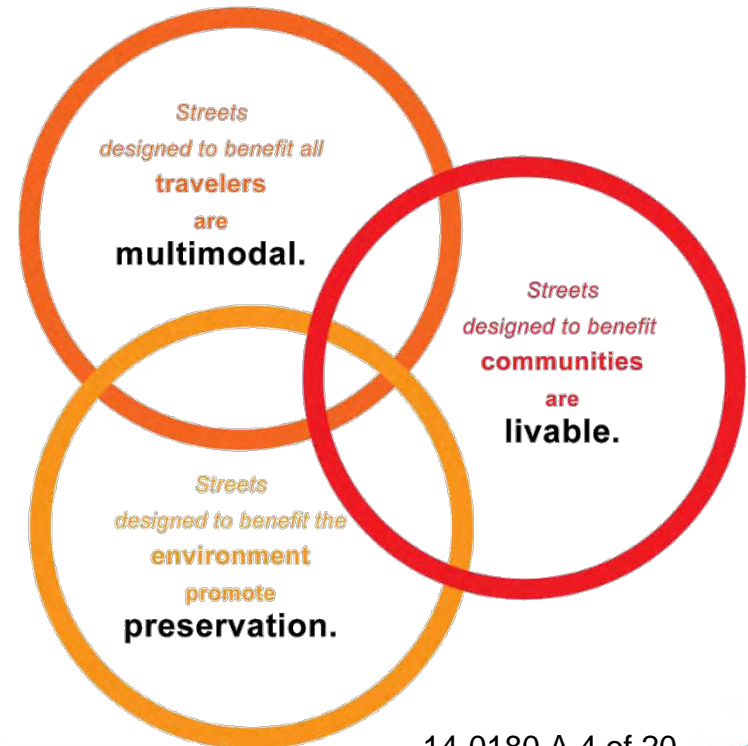
- The rural and historic character of the area
- Distinct, small communities
- A strong sense of community, knowing neighbors
- Welcoming places to walk, bike, and gather
- Healthy environment, preservation of wildlife corridors
- Employment and economic prosperity
- Commercial development that is compatible with historic areas
- Ease of travel in and through the community on smaller, uncongested roads
- Safe and efficient bicycle and pedestrian paths





Complete Streets

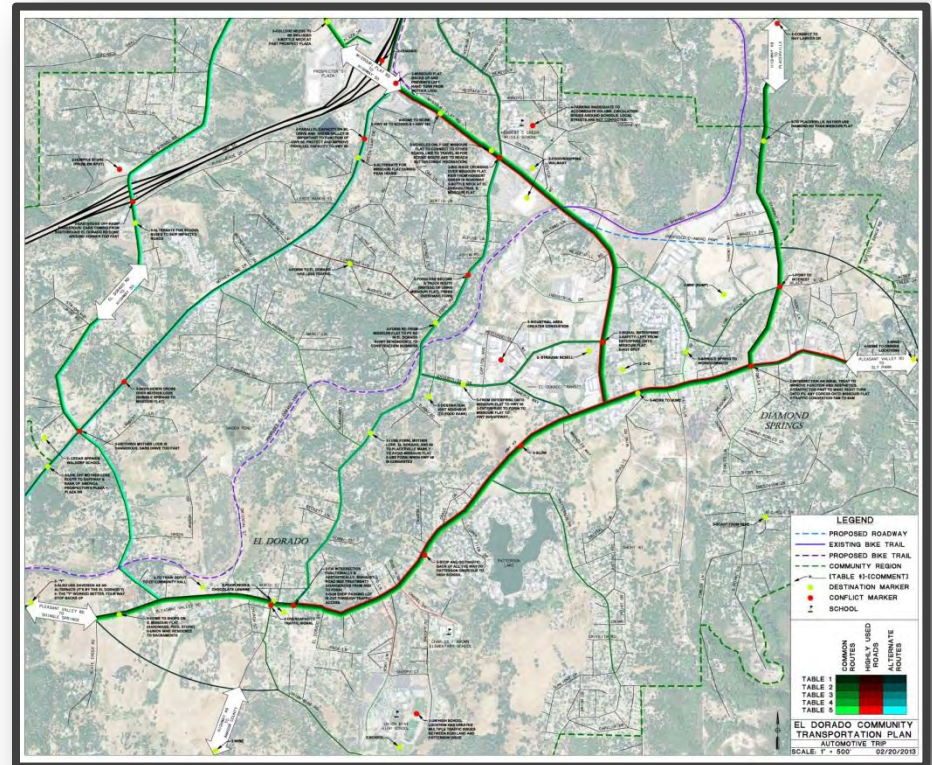
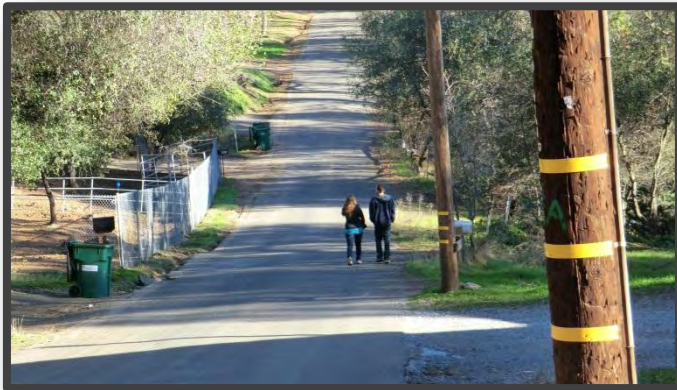
- What improvement tools are available?
 - Roadway improvements (lanes/shoulders/parking)
 - Intersection improvements
 - Bicycle, pedestrian and transit facilities



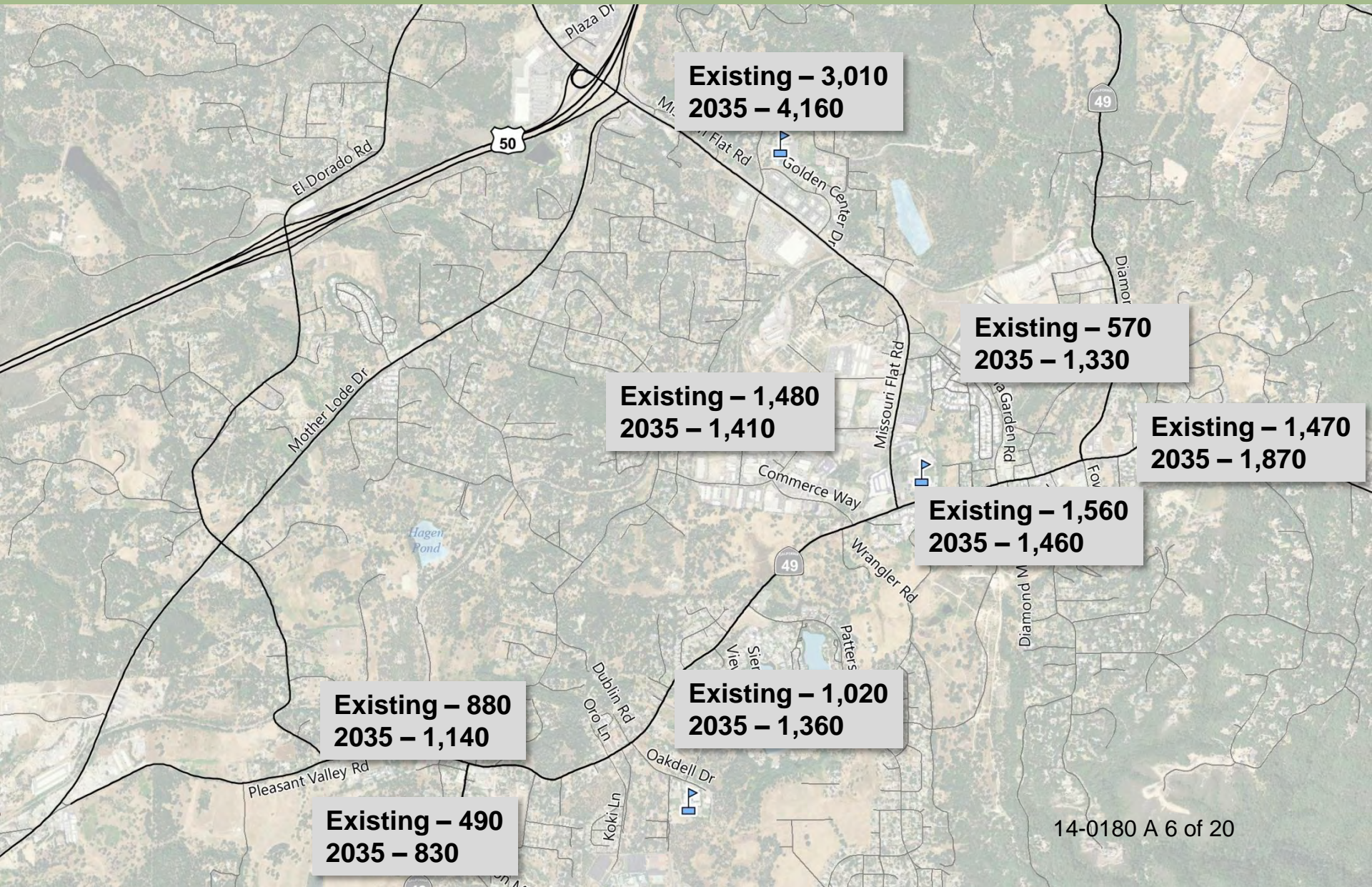


Community Area Mapping

- Existing issues
- Origins and destinations
- How do you get around?
 - In a car?
 - On a bike?
 - Walking?



Traffic Growth

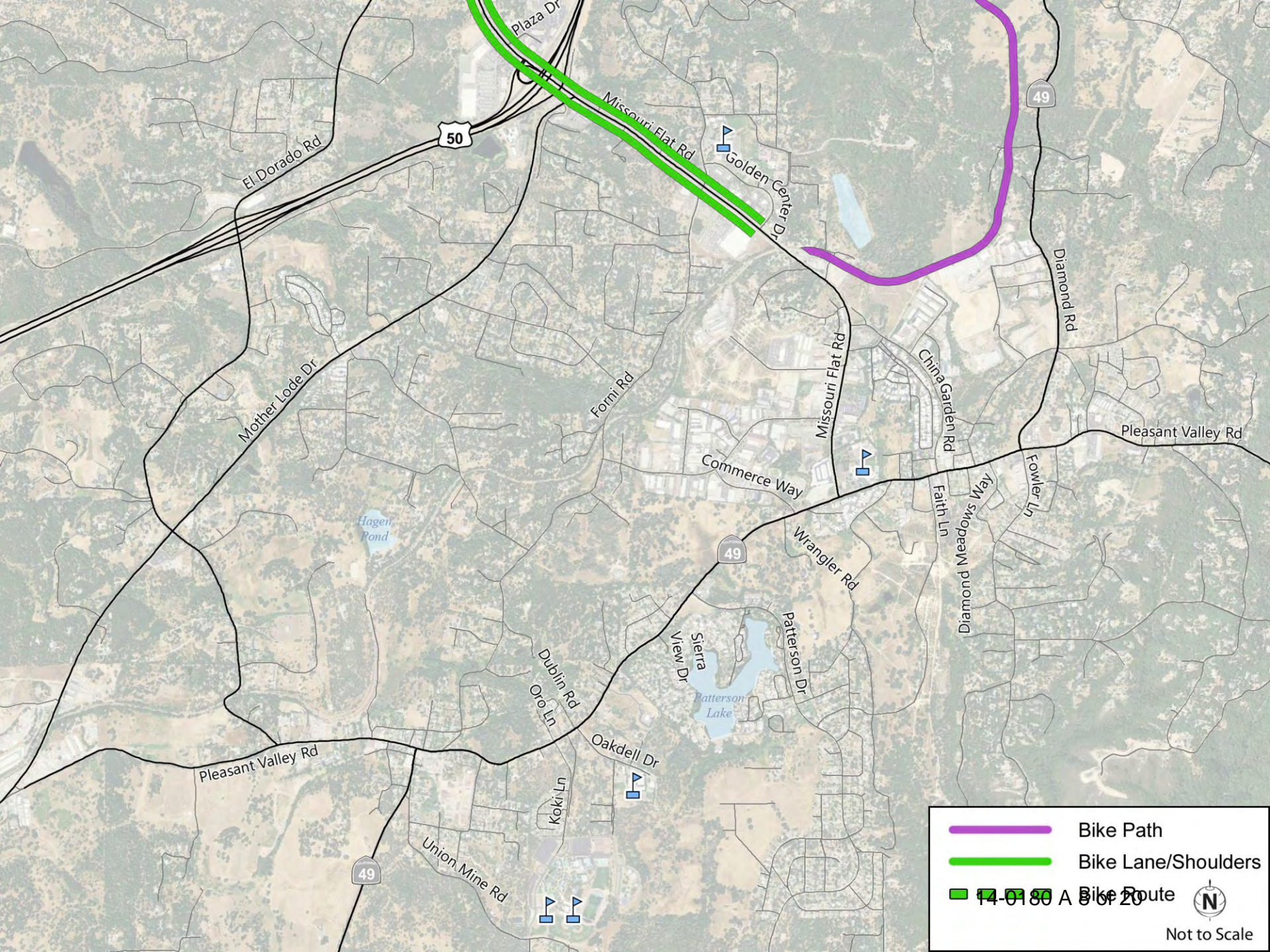




Active Transportation

- Bike network
- Pedestrian network



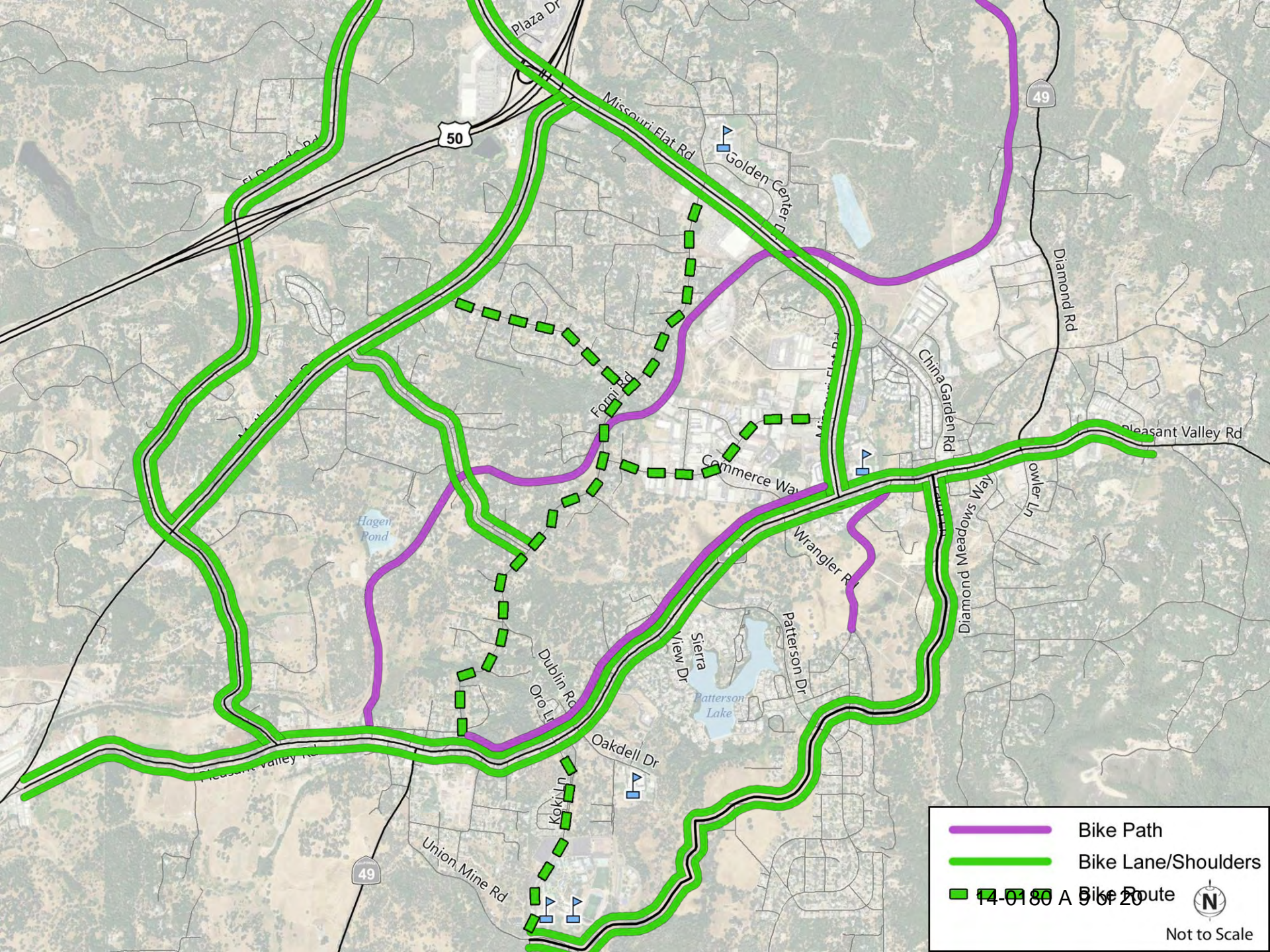


	Bike Path
	Bike Lane/Shoulders
	Bike Route

14-0180 A 9/6/20

 N

Not to Scale

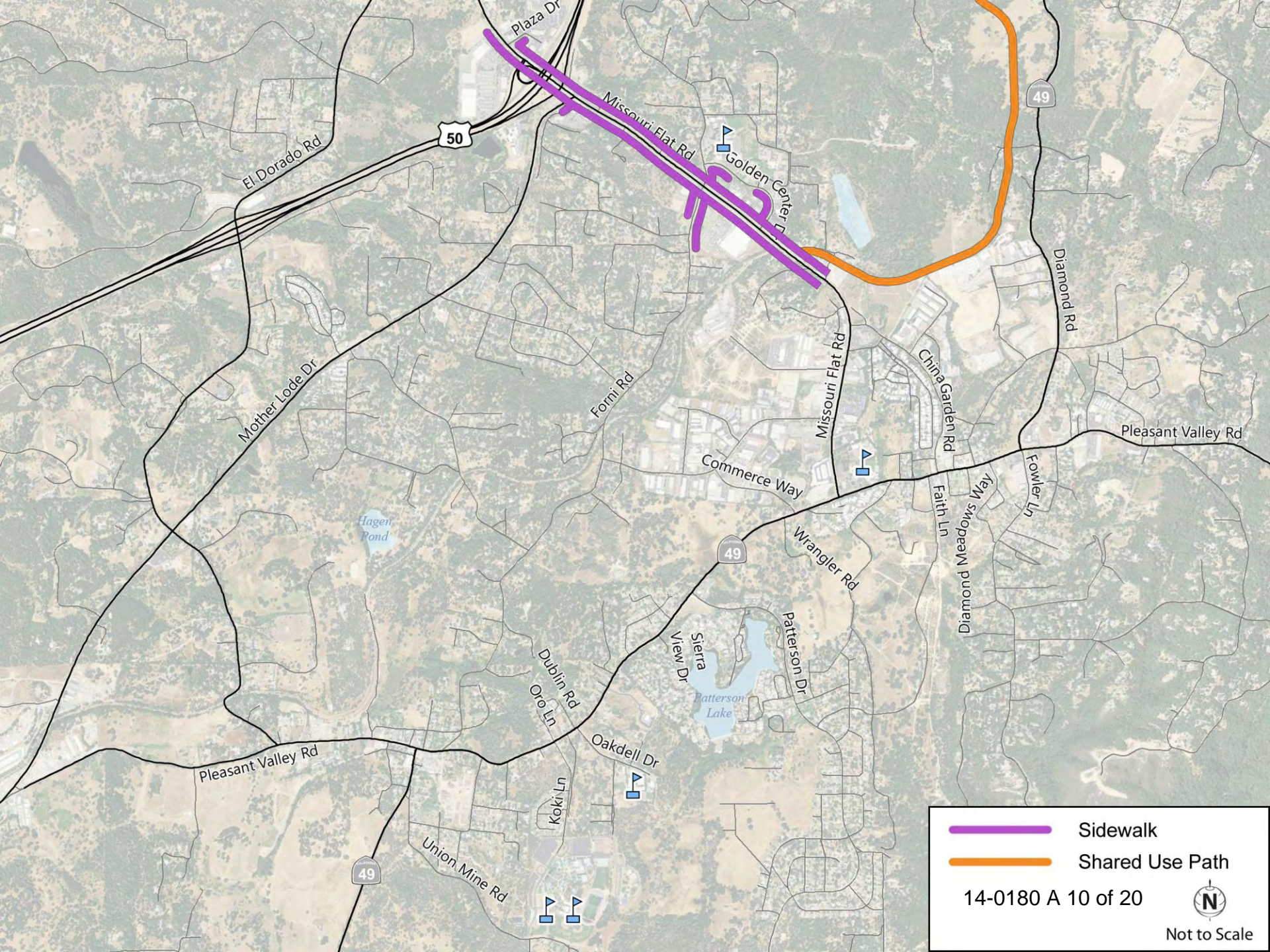


- Bike Path
- Bike Lane/Shoulders
- - - Bike Route



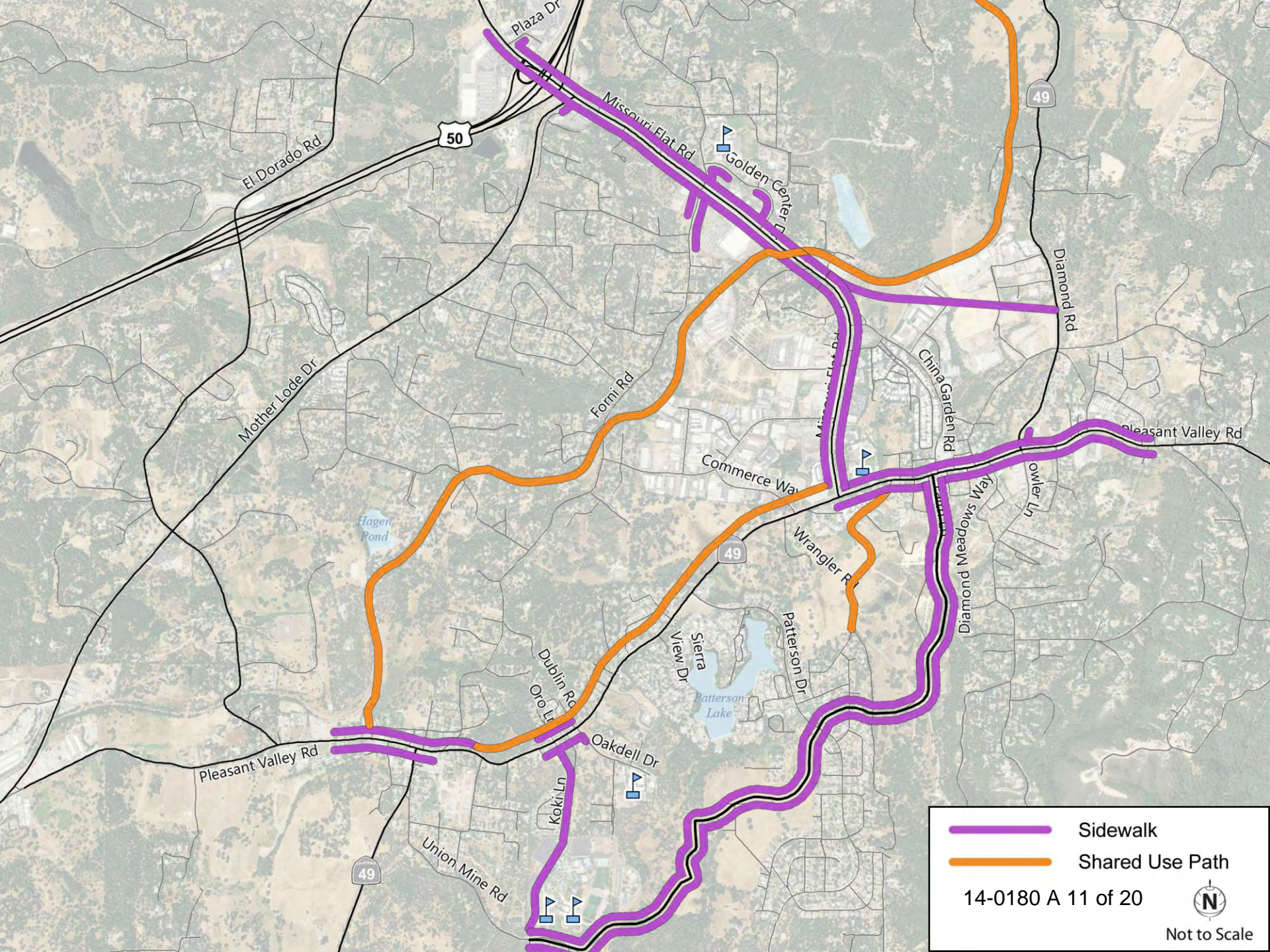
Not to Scale

14-0180 A 9/6/20



-  Sidewalk
-  Shared Use Path





-  Sidewalk
-  Shared Use Path

14-0180 A 11 of 20



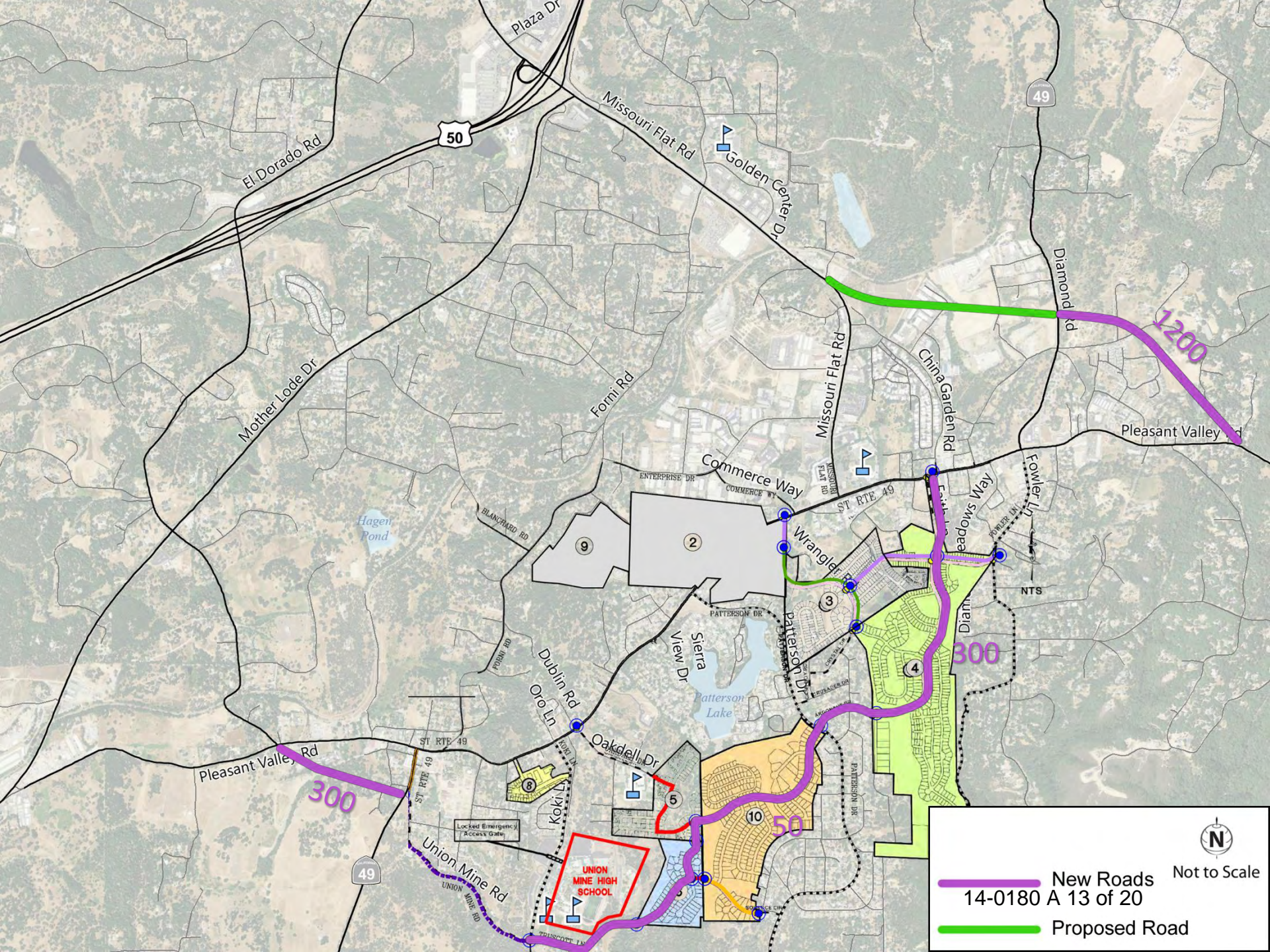
Not to Scale






Roadway Enhancements

- Network additions
- Intersection modifications
- Downtown Diamond Springs and El Dorado

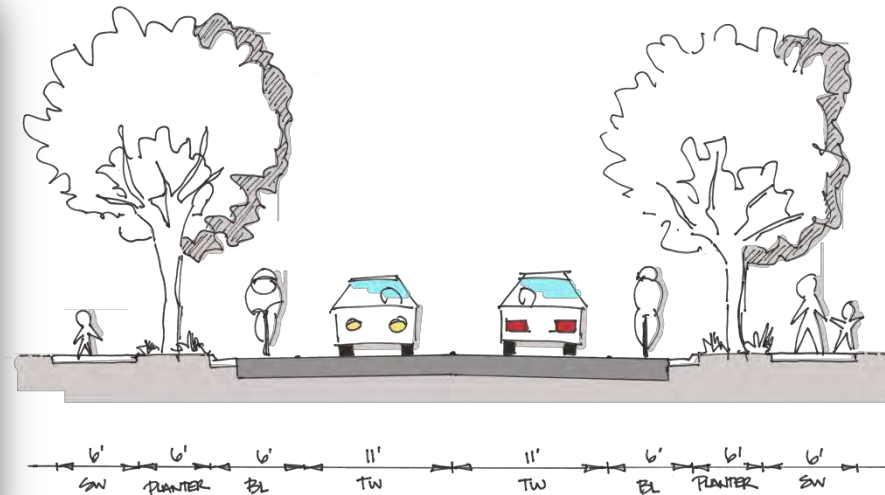




 Not to Scale
 New Roads
 14-0180 A 13 of 20
 Proposed Road



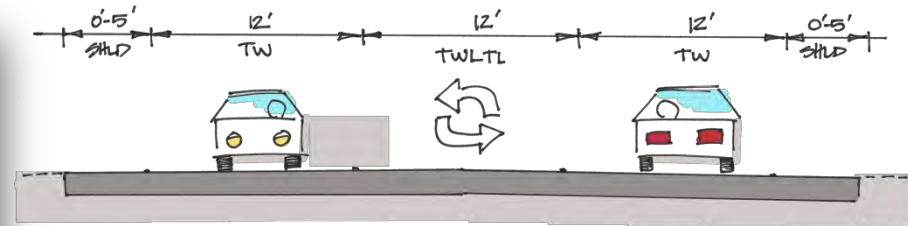
Union Mine Connector



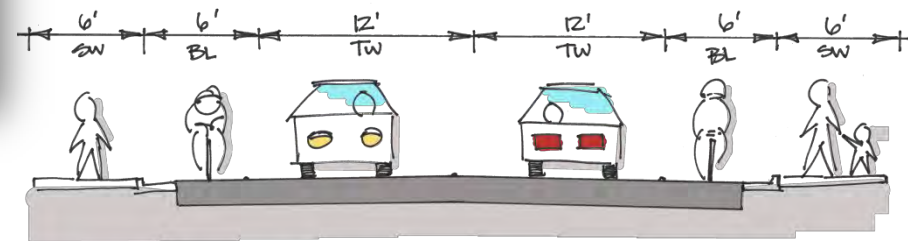
Proposed Section (58')



Missouri Flat Road South



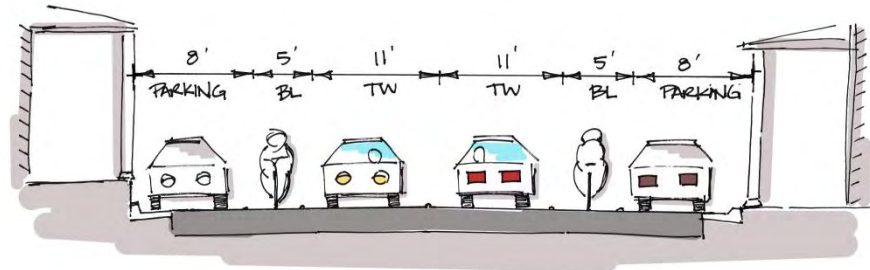
Existing Section (36-46')



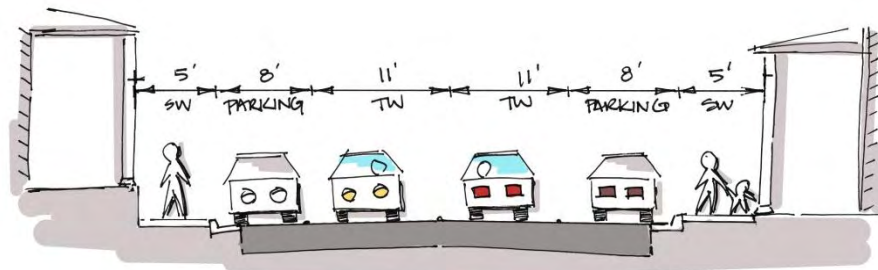
Proposed Section (48')



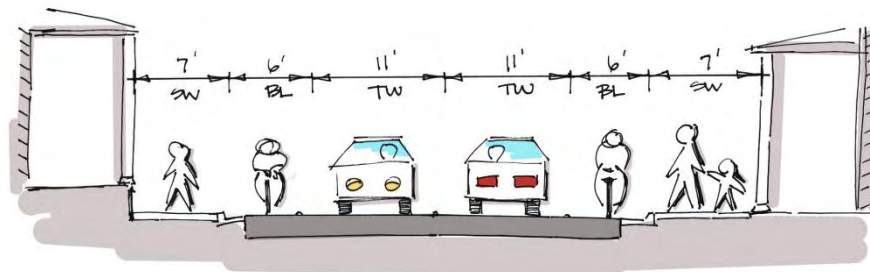
Historic Diamond Springs



Parking with bike lane and existing sidewalk



Expanded sidewalk with parking, no bike lane



Bike lane with expanded sidewalk, no parking



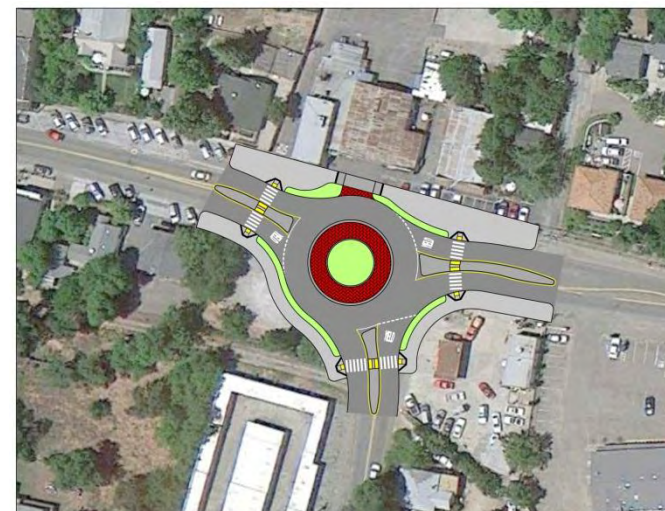
Downtown EI Dorado



Maintain Existing Stop Control,
enhance sidewalk and pedestrian crossings



New Traffic Signal



New Roundabout



Economic Analysis

- Tourism-supporting uses
 - Lodging
 - Restaurants
 - Art community
- Collaboration with Placerville and Amador County Wine Country
 - 70% of Fair Play area traffic funnels through Diamond Springs
- Economic Development Plan
 - Streetscape and storefront enhancement strategies
 - Catalyst development parcels
 - Parking and way finding
 - Organization of business community



Next Steps

- Draft Document (February 18, 2014)
- EDCTC Board (March 6, 2014)
- Coordinate with Caltrans on development of the SR 49 Transportation Concept Report





Questions and Comments

