

Community Economic Resilience Fund

County of El Dorado, Board of Supervisors

February 14, 2023

About Valley Vision

For 27 years, Valley Vision has served as a trusted nonprofit civic leadership organization in the region, driven by a “triple bottom line” approach of co-equally advancing social equity, economic prosperity, and environmental sustainability, and with a proven record in bringing diverse groups together to develop long-term solutions to the region’s greatest problems. This history of civic leadership and engagement runs across local, regional and statewide platforms, and across sectors and disciplines.

Community Economic Resilience Fund ("CERF")

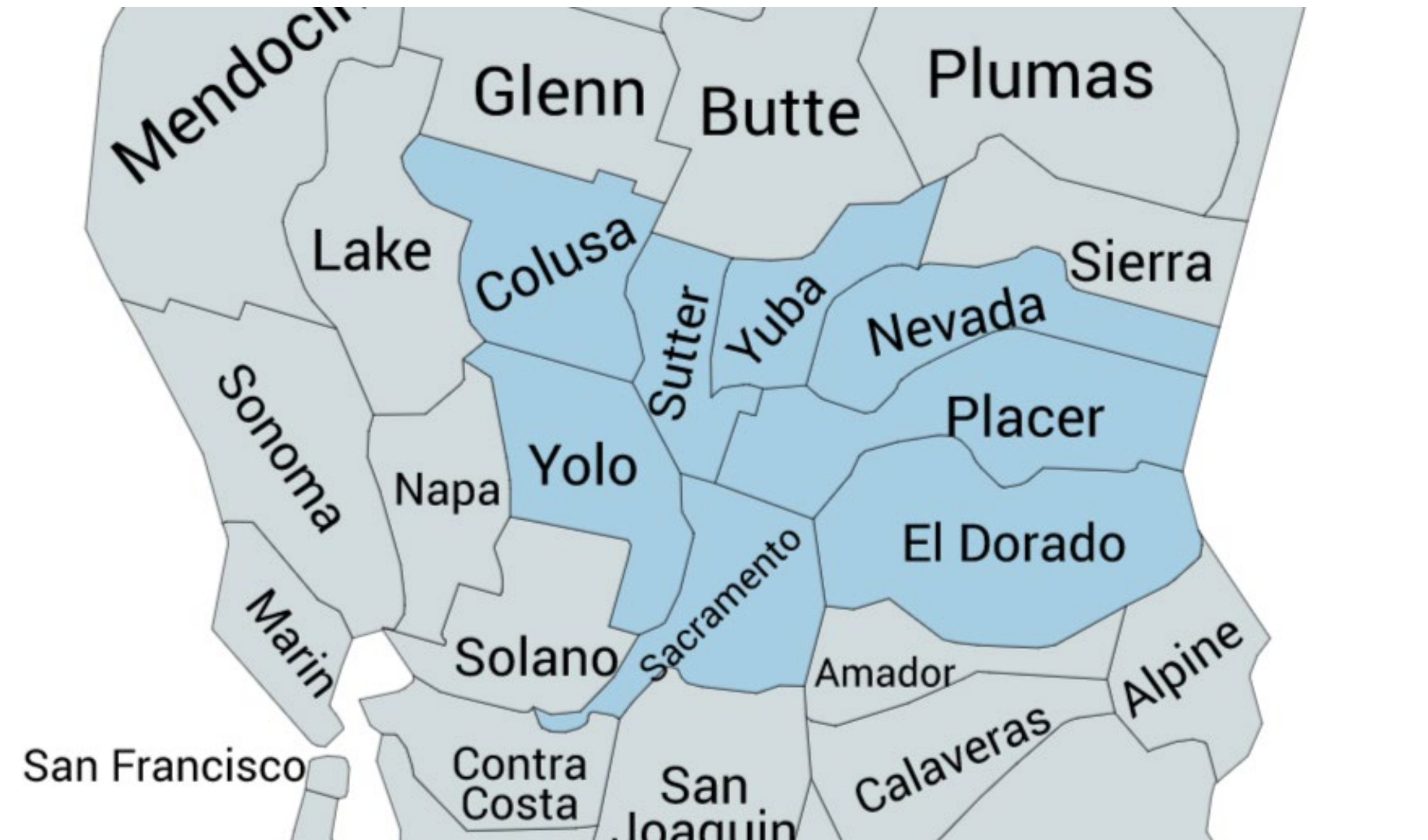
A one-time use of State general funds that will distribute \$600 million to regions across California to support inclusive and low carbon economic development.

Program Objectives

- Promote equitable and sustainable economic development
- Support inclusive economic planning that prioritizes equity, job quality, and sustainability (low-carbon)
- Align and leverage federal and state funding to maximize economic resilience



Our Sacramento Region



Includes the counties of:

- Colusa
- El Dorado
- Nevada
- Placer
- Sacramento
- Sutter
- Yolo
- Yuba

PLANNING PHASE

- 13 regions, up to \$5M each
- Regional Collaboratives - Inclusive planning groups that include balanced representation from:
 - Labor
 - Business
 - Community
 - Government
 - Indigenous communities
 - Economic Development
 - Philanthropy
 - Education
 - Workforce
 - And others
- Regional Economic Plans

IMPLEMENTATION PHASE

- Upwards of \$500M total
- Projects that:
 - Demonstrate proposed impacts to disinvested communities
 - Demonstrate community support
 - Promote state climate goals
 - Support labor standards and job quality
 - Demonstrate clear role in regional strategy
 - Complement existing funding sources
 - Supported by the Collaborative

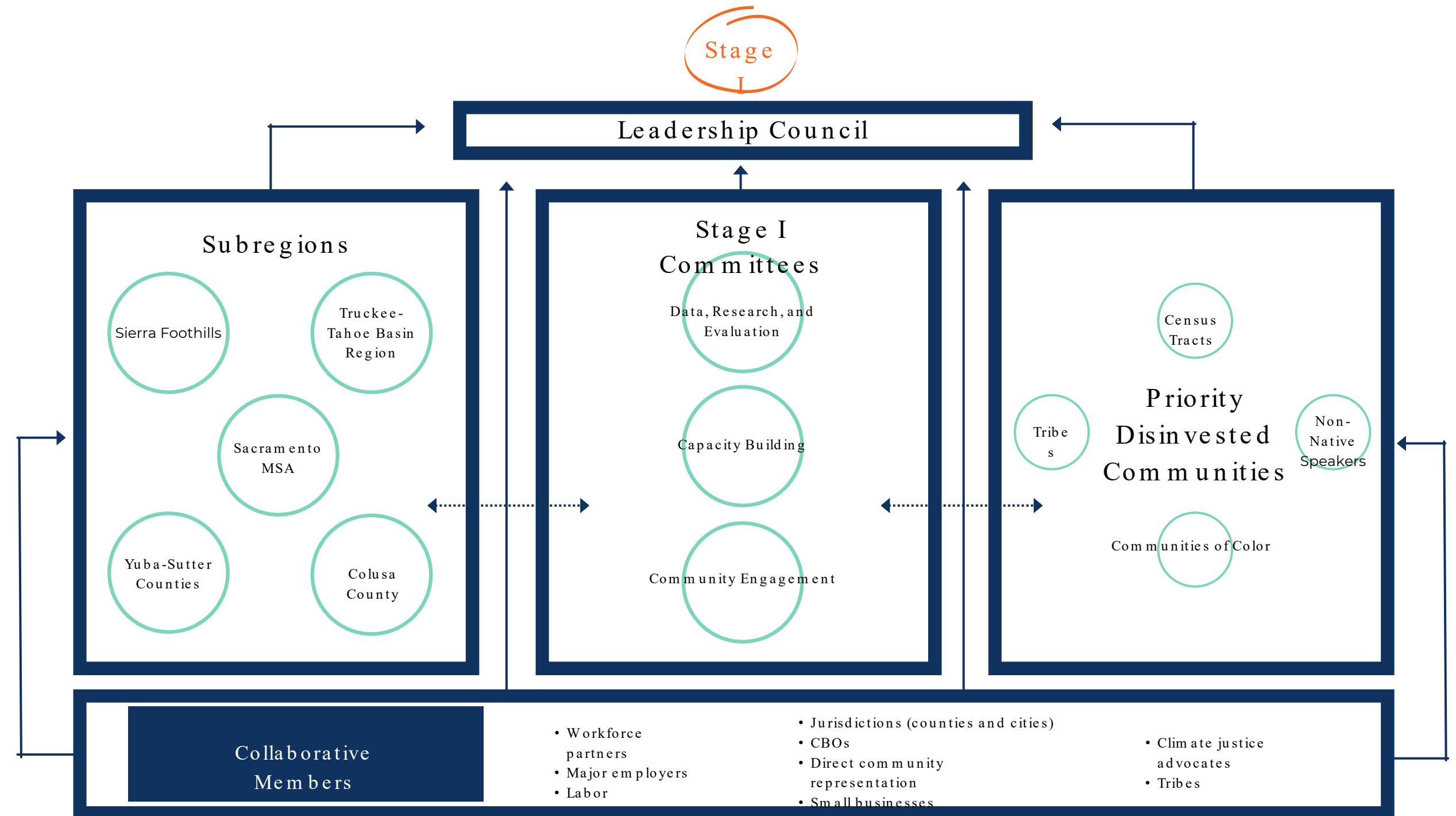
CERF Vision & Impact for Our Region

CERF is a transformative opportunity that allows us to establish a collective vision for our region in a way that includes and uplifts those who are typically left out of these processes. Through CERF we will:

- 1 Provide an opportunity to build a comprehensive regional inclusive economic development vision
- 2 Elevate historical marginalized communities and activate supportive projects
- 3 Create a pipeline for investments to support inclusive economic development projects through CERF and other sources
- 4 Build regional capacity for collaboration and strategies for place-based economic development that go beyond CERF

Proposed Governance Structure

Valley Vision is the Regional Convener and Fiscal Agent for our region.



El Dorado Role & Opportunities

Communicate and seek alignments of El Dorado County's priorities, opportunities, and challenges

Participate in the Collaborative and help grow El Dorado's representation
Primary Contact: Kyle Zimbelman, Economic and Business Relations Manager

Identify and activate high priority projects in El Dorado together

Our Next Steps

Building a strong and cohesive coalition

Begin to seat governance structure

Convene committees and draft charters

Advance key research analysis to inform the plan

Inventory and gap analysis of regional data assets as well as new assets

Planning Phase Workplan

Draft timeline of research and community engagement activities

Contact Us



For additional questions or to join our efforts:

cerf@valleyvision.org



To view FAQs and other background info:

<https://bit.ly/SacCERF>