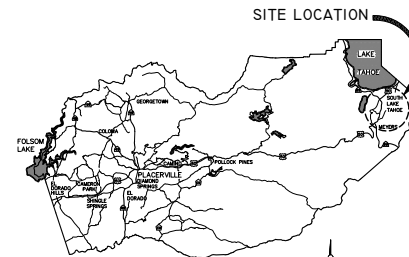


DEPARTMENT OF TRANSPORTATION  
COUNTY OF EL DORADO, CA

PROJECT PLANS FOR THE CONSTRUCTION OF  
**MONTGOMERY ESTATES AREA 1A**  
**EROSION CONTROL PROJECT**

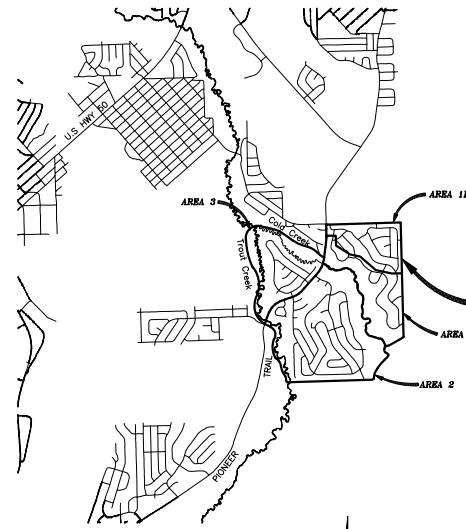
IN THE COUNTY OF EL DORADO, DISTRICT 5  
WITHIN THE PORTIONS OF THE MONTGOMERY ESTATES AT LAKE CHRISTOPHER UNITS 1, 2, 3,  
AND LAKE CHRISTOPHER SUBDIVISIONS

To be supplemented with Standard Plans and Specifications dated May 2006, including the  
amendments to the May 2006 Standard Specifications, of the California Department of  
Transportation, unless otherwise noted.



VICINITY MAP  
COUNTY OF EL DORADO

Sheet Number	Sheet Title	Sheet Description	Station
1	i	TITLE SHEET	
2	ii	GENERAL NOTES, ABBREVIATIONS, AND LEGEND	
3	iii	SHEET INDEX	
4	S-1	SURVEY ALIGNMENTS AND CONTROL	
5	S-2	SURVEY ALIGNMENT LISTING	
6	P-01	FORTUNE WAY PLAN & PROFILE	STA 16+00.00 TO 20+23.00
7	P-02	DEL NORTE ST PLAN & PROFILE	STA 23+00.00 TO 25+00.00
8	P-03	DEL NORTE ST / ALICE LAKE ROAD PLAN & PROFILE	STA 42+00.00 TO 43+50.00 \ STA 20+00.00 TO 21+00.00
9	P-04	COLD CREEK BASIN	STA 56+68.34 TO 57+90.94
10	P-05	DEL NORTE ST PLAN & PROFILE	STA 14+25.00 TO 19+00.00
11	P-06	COPPER WAY STA PLAN & PROFILE	STA 15+45.49 TO 18+00.00
12	P-07	COPPER WAY ROCK LINED CHANNEL	STA 13+67.02
13	H-1	HORIZONTAL CONTROL	
14	D-1	DETAILS	
15	D-2	DETAILS	
16	D-3	DETAILS	
17	D-4	DETAILS	
18	D-5	DETAILS	
19	R-1	REVEGETATION	
20	EC-1	TEMPORARY EROSION CONTROL PLAN	
21	EC-2	TEMPORARY EROSION CONTROL PLAN	
22	EC-3	TEMPORARY EROSION CONTROL DETAILS	
23	EC-4	TEMPORARY EROSION CONTROL DETAILS	
24	T-1	TRAFFIC CONTROL	
25	L-1	EXISTING AND PROPOSED LAND COVERAGE	
26	G-1	GEOPHYSICAL CONDITIONS	



LOCATION MAP

SCALE: 1" = 2000'

MONTGOMERY ESTATES  
PROJECT AREA

FUNDING AGENCY  
USDA FOREST SERVICE

CONTRACTOR'S LICENSE CLASSIFICATION: Bidders shall be properly licensed to perform the Work pursuant to the State Contractor's License Law (Business and Professions Code section 7000 et seq.) and shall possess a CLASS A LICENSE or equivalent combination of Classes required by the categories and type of Work included in the Contract Documents and Plans at the time the Contract is awarded, and shall maintain a valid license through completion and acceptance of the Work including guarantee and warranty period. If the Contractor possesses a Class A license instead of the equivalent combination of Classes required by the categories and type of work included in the Contract Documents and Plans, then the Contractor or a subcontractor must also possess a CLASS C27 "Landscaping Contractor" license. Failure of the successful Bidder to obtain proper and adequate licensing for an award of the Contract shall constitute a failure to execute the Contract, and shall result in forfeiture of the Bidders security.

REVISIONS		
MARK	DATE	BY



SUBMITTED BY: STEVE P. KOOYMAN      DATE  
CIVIL ENGINEER  
STATE OF CALIFORNIA NO. 55757

BOARD OF SUPERVISORS  
I JOHN R. KNIGHT  
II RAYMOND J. NUTTING  
III JAMES SWEENEY  
IV RON V. BRIGGS  
V NORMA SANTIAGO

COUNTY OF EL DORADO  
DEPARTMENT OF  
TRANSPORTATION  
(530) 573-7900 (530) 601-5900  
824 B EMERALD BAY ROAD 2800 FAIRLANE CT  
SOUTH LEBANON, CA 95687 PLACER, CA 95677

ADOPTED AND APPROVED BY:  
FRANK J. NUTTING      DATE  
CHAIR, BOARD OF SUPERVISORS, EL DORADO COUNTY  
JAMES W. WASE, JR., M.E. 6108      DATE  
DIRECTOR, COUNTY OF EL DORADO DEPARTMENT OF TRANSPORTATION  
TERRILL S. BLAIR, P.E., M.E. 5077      DATE  
ASSISTANT DIRECTOR, COUNTY OF EL DORADO DEPARTMENT OF TRANSPORTATION

CONTRACT NO. PW 09-30485, CIP NO. 95155  
MONTGOMERY ESTATES AREA 1A  
EROSION CONTROL PROJECT  
TITLE SHEET  
SHEET I of 26

GENERAL NOTES

ABBREVIATIONS

LEGEND

- ALL IMPROVEMENTS SHALL BE ACCOMPLISHED UNDER THE APPROVAL, INSPECTION, AND TO THE SATISFACTION OF THE EL DORADO COUNTY DEPARTMENT OF TRANSPORTATION (DOT). IMPROVEMENT CONSTRUCTION SHALL COMPLY WITH THESE PLANS AND THE MAY 2006 CALTRANS STANDARD PLANS, UNLESS NOTED OTHERWISE. ALL REFERENCES TO THE "STANDARD SPECIFICATIONS" SHALL MEAN THE STATE OF CALIFORNIA, DEPARTMENT OF TRANSPORTATION (CALTRANS) STANDARD SPECIFICATIONS, MAY 2006, INCLUDING THE AMENDMENTS TO THE MAY 2006 STANDARD SPECIFICATIONS. CONSTRUCTION NOT SPECIFIED ON THESE PLANS OR IN SPECIFIC EL DORADO COUNTY (COUNTY) ORDINANCES SHALL BE TO THE REQUIREMENTS OF THE STANDARD SPECIFICATIONS. THE CONTRACTOR IS OBLIGATED TO BE FAMILIAR WITH APPLICABLE SECTIONS OF THE STANDARD SPECIFICATIONS NOT DISCUSSED IN THE GENERAL NOTES. THE CONTRACT SPECIAL PROVISIONS SHALL SUPERSEDE THOSE OF THE STANDARD SPECIFICATIONS WHERE DISCREPANCIES OCCUR.
- CONSTRUCTION HOURS SHALL BE WEEKDAYS BETWEEN 8:00 A.M. AND 6:30 P.M. UNLESS PRIOR APPROVAL IS RECEIVED FROM THE COUNTY DOT.
- THE LOCATIONS AND EXTENT OF EXISTING UNDERGROUND UTILITIES IN THE WORK AREA AS SHOWN ARE APPROXIMATE AND ARE NOT NECESSARILY COMPLETE. A REASONABLE EFFORT HAS BEEN MADE TO LOCATE AND DELINEATE EXISTING UTILITIES BASED UPON AVAILABLE RECORDS. THE CONTRACTOR SHALL DETERMINE THE TYPE, LOCATION, SIZE, AND/OR DEPTH OF THE EXISTING UTILITIES WITHIN THE WORK AREA BEFORE COMMENCING WORK. THE CONTRACTOR OR ANY SUBCONTRACTOR FOR THIS CONTRACT SHALL BE FULLY RESPONSIBLE FOR ANY AND ALL DAMAGES WHICH MIGHT BE OCCURRED BY THE FAILURE TO ACCURATELY LOCATE AND PRESERVE ANY LOCAL AND PRESERVE ANY UNDERGROUND UTILITIES. THE CONTRACTOR SHALL CONTACT UNDERGROUND SERVICE ALERT AT (800) 642-2444 AT LEAST 48 HOURS PRIOR TO ANY CONSTRUCTION. SEE SPECIAL PROVISIONS FOR CONTRACTOR NOTIFICATION REQUIREMENTS. THE CONTRACTOR SHALL ASSUME COMPLETE RESPONSIBILITY FOR DAMAGED UTILITIES.
- UNLESS NOTED OTHERWISE ON THE PLANS, THE CONTRACTOR SHALL BE RESPONSIBLE FOR THE PROTECTION OF ALL EXISTING SURVEY MONUMENTS AND OTHER SURVEY MARKERS DURING CONSTRUCTION.
- THE CONTRACTOR SHALL PROVIDE, PLACE, AND MAINTAIN ALL LIGHTS, SIGNS, BARRICADES, FLAG PERSONS, PILOT CAR, OR OTHER DEVICES NECESSARY TO CONTROL TRAFFIC THROUGH THE CONSTRUCTION AREA AND FOR PUBLIC SAFETY IN ACCORDANCE WITH THESE PLANS, THE STANDARD SPECIFICATIONS, AND THE CALIFORNIA MANUAL ON UNIFORM TRAFFIC CONTROL DEVICES (MUTCD).
- THE CONTRACTOR AGREES TO ASSUME SOLE AND COMPLETE RESPONSIBILITY FOR JOB SITE CONDITIONS DURING THE COURSE OF CONSTRUCTION OF THIS PROJECT, INCLUDING SAFETY OF ALL PERSONS AND PROPERTY, AND FURTHER AGREES THAT THIS REQUIREMENT SHALL APPLY CONTINUOUSLY AND NOT BE LIMITED TO NORMAL WORKING HOURS IN ACCORDANCE WITH THE PROVISIONS OUTLINED BY THE PROJECT CONTRACT AND STANDARD SPECIFICATIONS.
- THERE SHALL BE NO GRADING OR LAND DISTURBANCE PERFORMED WITH RESPECT TO THE PROJECT BETWEEN OCTOBER 15 AND MAY 1 UNLESS PROPER APPROVALS ARE OBTAINED FROM THE TAHOE REGIONAL PLANNING AGENCY (TRPA), AS PROVIDED IN THE LIMITED EXEMPTION DESCRIBED IN CHAPTER 64, SUBSECTION 64.2.B. OF THE TRPA CODE OF ORDINANCES. APPROVALS FOR GRADING BETWEEN OCTOBER 15 AND MAY 1 MUST ALSO BE OBTAINED FROM THE REGIONAL WATER QUALITY CONTROL BOARD, LAKHOTAN. IF REQUIRED, THE COUNTY SHALL OBTAIN THESE APPROVALS.
- THE CONTRACTOR SHALL MAINTAIN A SET OF PLANS ON THE JOB SHOWING "AS-CONSTRUCTED" CHANGES MADE TO DATE. UPON COMPLETION OF THE PROJECT, THE CONTRACTOR SHALL SUPPLY TO THE COUNTY A SET OF PLANS, MARKED UP TO THE SATISFACTION OF THE COUNTY, REFLECTING THE AS-CONSTRUCTED MODIFICATIONS.
- ALL CONTROL STATIONING AND DATA DIMENSIONING ARE REFERENCED TO THE CENTERLINE OF THE FACILITY SHOWN UNLESS OTHERWISE NOTED. STATIONING AND DIMENSIONING FOR THE CONCRETE CURB AND GUTTER IS ALONG THE TOP BACK OF CURB.
- AT NO TIME SHALL THE CONTRACTOR UNDERTAKE TO CLOSE OFF ANY EXISTING UTILITY LINES OR OPEN VALVES OR TAKE ANY OTHER ACTION WHICH WOULD AFFECT THE OPERATION OF EXISTING WATER OR SEWER SYSTEMS WITHOUT PRIOR APPROVAL FROM THE SOUTH TAHOE PUBLIC UTILITY DISTRICT (STPUD). APPROVAL SHALL BE REQUESTED AT LEAST 48 HOURS IN ADVANCE OF THE TIME THAT THE INTERRUPTION OF THE EXISTING SYSTEM IS REQUIRED. ANY INTERRUPTION OF SERVICE TO ACTIVE WATER OR SEWER SERVICES, INCLUDING FIRE HYDRANTS, WHETHER INTENTIONAL OR NOT, MUST BE KEPT TO A MINIMUM TIME PERIOD. IF SERVICE TO BUILDINGS IS TO BE OFF FOR MORE THAN FOUR HOURS, THE CONTRACTOR MUST ADVISE STPUD.
- THE CONTRACTOR SHALL BE REQUIRED TO PERFORM PREVENTIVE DUST CONTROL MEASURES TO ENSURE THAT DUST RESULTING FROM THE CONTRACTOR'S PERFORMANCE OF THE WORK IS CONTROLLED IN ACCORDANCE WITH THE PROVISIONS OF SECTION 7, "LEGAL RELATIONS AND RESPONSIBILITY," OF THE STANDARD SPECIFICATIONS, COUNTY, AND LOCAL ORDINANCES. SEE SPECIAL PROVISIONS REGARDING SWEEPING REQUIREMENTS.
- THE CONTRACTOR SHALL BE RESPONSIBLE FOR IMPLEMENTING ALL TEMPORARY EROSION CONTROL MEASURES. THE EROSION CONTROL MEASURES SHALL BE IN ACCORDANCE WITH THE TRPA "HANDBOOK OF BEST MANAGEMENT PRACTICES" AND THE STORM WATER POLLUTION PREVENTION PLAN (SWPPP). THE DOT SHALL CONTACT TRPA PRIOR TO THE COMMENCEMENT OF WORK FOR A PRE-GRADING INSPECTION OF THE INSTALLED TEMPORARY EROSION CONTROL FACILITIES. THE CONTRACTOR SHALL BE RESPONSIBLE FOR THE MAINTENANCE AND PERFORMANCE OF THE TEMPORARY EROSION CONTROL MEASURES THROUGHOUT THE DURATION OF THE PROJECT. SEE SPECIAL PROVISIONS REGARDING TEMPORARY EROSION CONTROL FACILITY REMOVAL.
- CONSTRUCTION LIMITS SHOWN ON THE PLANS DELINEATE BOUNDARIES FOR THE CONTRACTOR'S OPERATIONS OUTSIDE THE COUNTY STREET RIGHT-OF-WAY. CONSTRUCTION LIMIT FENCING SHALL BE ERRECTED ALONG THESE BOUNDARIES PRIOR TO COMMENCEMENT OF CONSTRUCTION. WITHIN THE CONSTRUCTION LIMITS, EXISTING TREES SHALL BE PROTECTED TO THE EXTENT FEASIBLE. ALL EXISTING TREES SHALL BE PROTECTED UNLESS SHOWN ON THE PLANS TO BE REMOVED. SEE SPECIAL PROVISIONS REGARDING PAYMENT FOR TREE REMOVAL.
- ALL REVEGETATION SHOWN ON THE PLANS IS TO BE COMPLETED BY OTHERS, UNLESS NOTED OTHERWISE.
- THE CONTRACTOR SHALL USE ONLY DESIGNATED SPECIAL SITES FOR STORAGE OF EQUIPMENT AND MATERIALS AS SHOWN ON THESE PLANS. THE CONTRACTOR SHALL BE RESPONSIBLE FOR THE SECURITY OF ALL EQUIPMENT AND MATERIALS.
- IT IS THE RESPONSIBILITY OF THE CONTRACTOR AND HIS SUBCONTRACTOR(S) TO EXAMINE THE PROJECT SITE PRIOR TO THE OPENING OF BID PROPOSALS. THE CONTRACTOR SHALL BECOME FAMILIAR WITH THE CONDITIONS UNDER WHICH THE WORK IS TO BE PERFORMED, SUCH AS THE NATURE AND LOCATION OF THE WORK AND THE GENERAL AND LOCAL CONDITIONS, PARTICULARLY THOSE AFFECTING THE AVAILABILITY OF TRANSPORTATION, THE DISPOSAL, HANDLING, AND STORAGE OF MATERIALS, AVAILABILITY OF LABOR, WATER, ELECTRICITY, ROADS, THE UNCERTAINTIES OF WEATHER, THE CONDITIONS OF THE GROUND, SURFACE AND SUBSURFACE MATERIALS, THE EQUIPMENT AND FACILITIES NEEDED PRIMARILY FOR AND DURING THE PERFORMANCE OF THE WORK, AND THE COSTS THEREOF. ANY FAILURE BY THE CONTRACTOR AND SUBCONTRACTOR(S) TO ACCQUANT HIMSELF WITH ALL THE AVAILABLE INFORMATION WILL NOT RELIEVE HIM FROM RESPONSIBILITY FOR PROPERLY ESTIMATING THE DIFFICULTY AND COST OF SUCCESSFULLY PERFORMING THE WORK.
- ELEVATIONS SHOWN ON THE PLANS FOR PIPE INVERTS, TOPS OF GRATES, RIMS, CURBS, ETC., ARE BASED UPON THE TOPOGRAPHIC INFORMATION SHOWN ON THE PLANS. THE CONTRACTOR SHALL VERIFY ALL NECESSARY SURFACE ELEVATIONS IN THE FIELD AND NOTIFY THE DOT OF ANY DISCREPANCIES, WHICH MIGHT AFFECT PROPER OPERATION OF THE NEW FACILITIES BEFORE BREAKING GROUND AND PRIOR TO FACILITY INSTALLATION. THE DOT SHALL BE CONTACTED IN THE EVENT ELEVATIONS ARE INCORRECT SO THAT THE PROPER ADJUSTMENTS CAN BE MADE PRIOR TO THE INSTALLATION OF THE FACILITIES.
- THE CONTRACTOR SHALL OBTAIN AT HIS OWN EXPENSE ALL PERMITS, LICENSES, INSURANCE POLICIES, ETC., NOT ALREADY OBTAINED BY DOT, AS MAY BE NECESSARY TO COMPLY WITH STATE AND LOCAL LAWS ASSOCIATED WITH THE PERFORMANCE OF THE WORK. SEE SPECIAL PROVISIONS.
- THE CONTRACTOR IS RESPONSIBLE TO REVIEW THE CONTRACT DOCUMENTS FOR ALL SUBMITTALS REQUIRED FOR COUNTY REVIEW AND ACCEPTANCE.
- THE COUNTY WILL FURNISH THE CONSTRUCTION STAKING TO THE CONTRACTOR AS SET FORTH IN THE SPECIAL PROVISIONS.
- CONTRACTOR SHALL NOTE THAT THE PLANS SHOW BOTH HORIZONTAL AND SLOPE (ACTUAL) LENGTHS FOR PIPE. ALL PIPE LENGTHS AND INVERT ELEVATIONS SHOWN ON THE PLANS ARE TO THE CENTERLINE OF THE STRUCTURES TO WHICH THE PIPES ARE ATTACHED. SEE SPECIAL PROVISIONS FOR THE MAXIMUM ALLOWABLE DEFLECTION ANGLE AT EACH PIPE JOINT.
- THE LIMITS OF GRADING BEHIND THE PROPOSED CURB ARE SHOWN ON THE PLANS. THE CONTRACTOR IS RESPONSIBLE TO PLACE FILL BEHIND THE CURB AS SHOWN ON THE PLANS, DETAILS, AND AS DIRECTED BY THE ENGINEER. SEE SPECIAL PROVISIONS FOR THE RAW EARTHWORK QUANTITIES ASSOCIATED WITH GRADING BEHIND THE PROPOSED CURB.
- SEE SPECIAL PROVISIONS AND SHEET G-1 (BORING LOGS) FOR EXISTING SUBSURFACE INFORMATION.

ABBREVIATION	DESCRIPTION	ABBREVIATION	DESCRIPTION
Δ	DELTA = DEFLECTION ANGLE	LT	LEFT
A	ASPHEN	LTP	LAKE TAHOE DATUM
AB	AGGREGATE BASE	MISC	MISCELLANEOUS
ABAND	ABANDONED	MOC	MID POINT ON CURVE
AC	ASPHALT CONCRETE	N	NORTH
ACS	ASPHALT CONCRETE SWALE	NIC	NOT IN CONTRACT
ADP	ASBESTOS CEMENT PIPE	NTS	NOT TO SCALE
AP	ANGLE POINT	OAE	OR APPROVED EQUAL
APN	ASSESSOR'S PARCEL NUMBER	OC	ON CENTER
AV/AR	AIR VACUUM/AIR RELEASE VALVE	OD	OUTSIDE DIAMETER
BC	BEGIN CURVE	OH	OVERHEAD
BCR	BEGIN CURB RETURN	O/S	OVERSIDE
BGN	BEGIN	P	PINE
BLVD	BOULEVARD	PC	POINT OF BEGINNING OF CURVE
BO	BLOW OFF	PCC	PORTLAND CEMENT CONCRETE
BR	BOTTOM OF ROOK	PERF	PERFORATED
BVCE	BEGIN VERTICAL CURVE ELEVATION	PL	PROPERTY LINE
BVCS	BEGIN VERTICAL CURVE STATION	POCC	POINT OF COMPOUND CURVE
C	CEGAR	POCVC	POINT OF COMPOUND VERTICAL CURVE ELEVATION
C STA	CALC-SAC STATIONING	POCVCS	POINT OF COMPOUND VERTICAL CURVE STATION
CALC'S	CALCULATIONS	FOR	PORTION
CC	CENTER TO CENTER	POVCE	POINT OF REVERSE VERTICAL CURVE ELEVATION
CF	CUBIC FEET OR CURB FACE	POVCS	POINT OF REVERSE VERTICAL CURVE STATION
CHD	CHORD DIRECTION	PP	POWER/UTILITY POLE
OR	CIRCLE	PR	POINT OF REVERSE CURVE
E	CENTERLINE	PROCP	PROPOSED
CLF	CLASS OF CENTERLINE	PT	POINT OR POINT OF TANGENCY
CLP	CONSTRUCTION LIMIT FENCE	PVE	PUBLIC UTILITY EASEMENT
CLR	CLEAR	PVL	POLY-VINYL CHLORIDE
CO	CURB OPENING	PVI	POINT OF VERTICAL INTERSECTION ELEVATION
CO	COUNTY	PVS	POINT OF VERTICAL INTERSECTION STATION
CONC	CONCRETE	R	RADIUS
CONSTR	CONSTRUCT	R&R	REMOVE & REPLACE
CMP	CORRUGATED METAL PIPE	RC	RELATIVE COMPACTION
CT	CALTRANS OR COURT	RCP	REINFORCED CONCRETE PIPE
CTC	CALIFORNIA TAHOE CONSERVANCY	RD	ROAD
CY	CUBIC YARD	REF	REFERENCE
C&G	CURB AND GUTTER	REQ	REQUIRED
D	DEPTH	RLC	ROCK-LINED CHANNEL
DB	DRAIN BASIN	RR	RIGHT-OF-WAY
DBL	DOUBLE	RRAD	RAILROAD
DET	DETAIL	RSP	ROCK SLOPE PROTECTION
DI	DRAINAGE INLET OR DUCTILE IRON	RT	RIGHT
DIA OR Ø	DIAMETER	S	SOUTH OR SANITARY SEWER
DISS	DISSIPATOR	SCO	SEWER CLEAN OUT
D/R	DRIVE	SD	STORM DRAIN
DW	DRIVEWAY	SDM	STORM DRAIN MANHOLE
E	EAST	SF	SQUARE FEET
EA	END OF CURVE	SHT	SHEET
EGR	END OF CURB RETURN	SLE	SLOPE LENGTH
EG	EXISTING GRADE	SU	SLOPE LENGTH IN PAVEMENT
ELEV	ELEVATION	SUL	SLOPE LENGTH OUT OF PAVEMENT
ELEC	ELECTRIC	SMH	SEWER MANHOLE
END OF PIPE	END OF PIPE	SPE	SPECIAL PROVISIONS
EP	EDGE OF PAVEMENT	ST	SEDMENT TRAP OR STREET
EASEMT	EASEMENT	STA	STATION
EV	END VERTICAL CURVE ELEVATION	STD	STANDARD
EVS	END VERTICAL CURVE STATION	STL	STEEL
EX	EXISTING	SWPPP	STORM WATER POLLUTION PREVENTION PLAN
FR	FIRE	STPUD	SOUTH TAHOE PUBLIC UTILITY DISTRICT
FES	FLARED END SECTION	TBC	TOP BACK OF CURB
FF	FILTER FENCE	TBD	TOP BACK OF DIKE
FG	FINISHED GRADE	TD	TOP OF DIKE
FH	FIRE HYDRANT	TDR	TEMPORARY BENCHMARK
FL	FLOWLINE	TBR	TO BE REMOVED
FM	FORCE MAIN	TR	TOP OF GRATE
FMH	FORCE MAIN MANHOLE	TR	TOP OF ROOK
FS	FINISH SURFACE	TRANS	TRANSITION
G	GAS	TRPA	TAHOE REGIONAL PLANNING AGENCY
GA	GAUGE	TTL	TOTAL
GB	GRADE BREAK	TW	TOP OF WALL
GLS	GRASS-LINED SWALE	TYP	TYPICAL
G	GAS VALVE	UG	UNDERGROUND
H	HORIZONTAL	UKN	UNKNOWN
HDPE	HIGH DENSITY POLYETHYLENE	USFS	UNITED STATES FOREST SERVICE
HP	HIGH POINT	V	VERTICAL
ID	INSIDE DIAMETER	W	WEST OR WATER
IRST	INVERT ELEVATION	W/O	WITHOUT
INTRN	INTERSECTION	WC	WILLOW CLUSTER
L	LENGTH	WV	WATER VALVE
LC	LENGTH OF CHORD		
LF	LINEAR FEET		

EXISTING	PROPOSED
(DOTTED AND/OR DASHED)	CENTERLINE
---	SAWCUT (AS NOTED)
---	MISC PAVING (ROADWAY)
---	TR-IN PAVEMENT (ROADWAY)
---	AC REMOVE (ROADWAY)
---	AC REMOVE & RESTORE
---	AC D/W REMOVE & REPLACE
---	MISCELLANEOUS GRADING
---	ELEVATION
---	ELEVATION, LT, EG, CL, RT (PROFILE ONLY)
---	ROLLED C&G
---	SEDIMENT TRAP OR DRAIN BASIN
---	DRAINAGE INLET
---	CUT OR FILL SLOPE
---	DETAIL REF NUMBER SHEET NUMBER
---	ROCK
---	ONE-QUARTER DELTA
---	SD PIPE, (MATERIAL AS NOTED)
---	FILTER FENCE OR CONSTRUCTION LIMIT FENCE
---	SD MANHOLE
---	FLARED END SECTION
---	SLOPE RATIO, H:V
---	ROCK LINED CHANNEL
---	GRASS LINED SWALE
---	GRASS LINED SWALE (PROFILE)
---	TREE REMOVAL
---	FLOWLINE
---	CUT
---	FILL
---	RETAINING WALL

UTILITIES

CABLE TELEVISION	CHARTER COMMUNICATIONS, (775) 588-1077
NATURAL GAS	SOUTHWEST GAS, (530) 543-3225
ELECTRIC	LIBERTY ENERGY, (530) 541-6400
SEWER & WATER	SOUTH TAHOE PUD, (530) 544-6474
TELEPHONE	ATT, (530) 888-2031
STORM DRAIN	EL DORADO COUNTY DOT, (530) 573-3180

ORIGINAL SCALE IS IN INCHES  
FOR REDUCED PLANS

REVISION	DATE	DESCRIPTION	BY

PREPARED BY: *[Signature]*  
 SUPERVISION OF: *[Signature]*  
 REGISTERED CIVIL ENGINEER  
 DATE: 4/5/2011

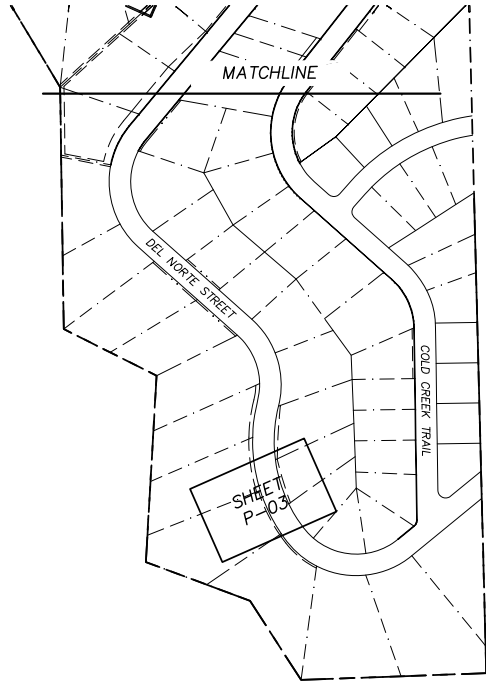
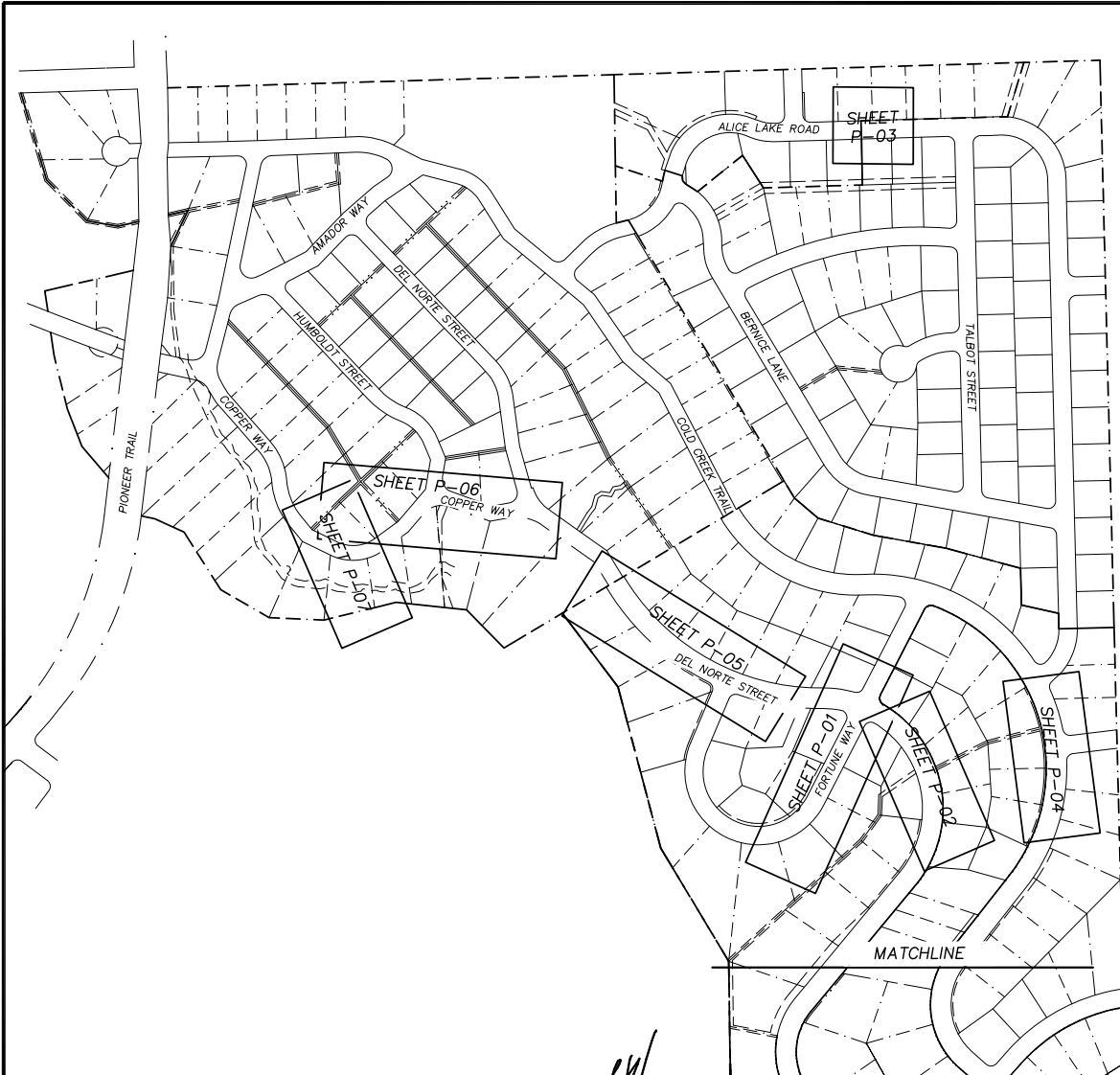
DESIGNED: DWK  
 DRAWN: JTC  
 CHECKED: [ ]  
 DATE: 03/2011  
 ROAD NUMBER: [ ]

**EL DORADO COUNTY**  
 DEPARTMENT OF TRANSPORTATION

**MONTGOMERY ESTATES AREA 1A**  
 GENERAL NOTES, AND LEGEND

SHEET 11  
 2 of 26  
 CONTRACT NO. PW 09-30485  
 OF 95155

FOR REDUCED PLANS ORIGINAL SCALE IS IN INCHES 2 1 0



REVISION	NUMBER	DATE	DESCRIPTION	BY



PREPARED UNDER SUPERVISION OF:  
*[Signature]*  
 REGISTERED CIVIL ENGINEER  
 DATE: 4/5/2011

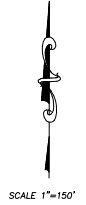
DESIGNED: DWK  
 DRAWN: JTC  
 CHECKED: DSP  
 DATE: 03/2011  
 ROAD NUMBER:



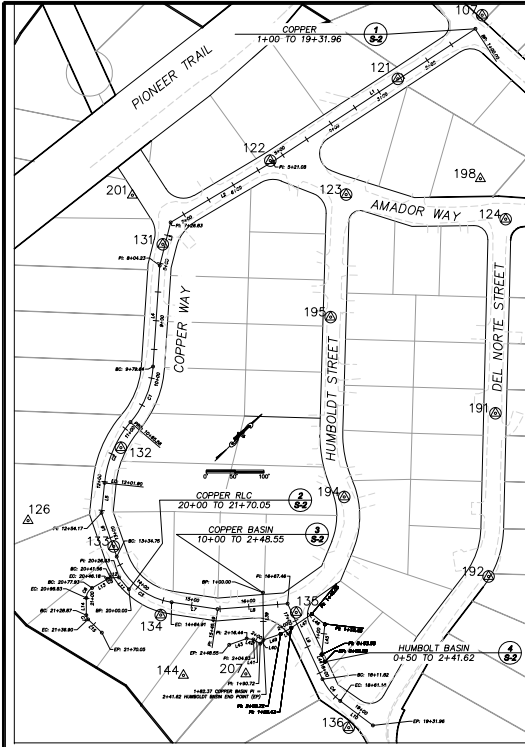
EL DORADO COUNTY  
 DEPARTMENT OF TRANSPORTATION

MONTGOMERY ESTATES AREA 1A  
 SHEET INDEX

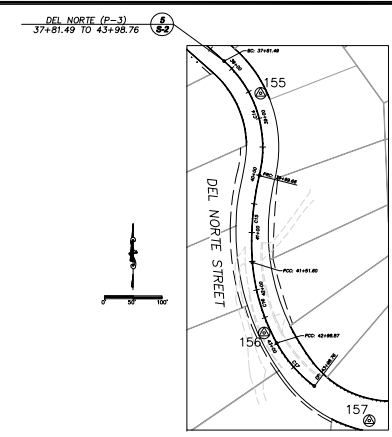
SHEET III  
 3 of 26  
 CONTRACT NO. PW 09-30485  
 CIP No. 95155



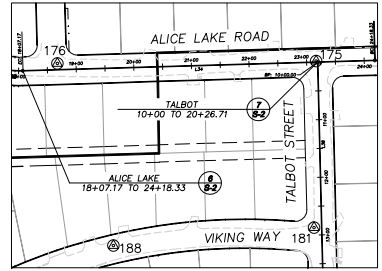
FOR REDUCED PLANS  
REVISION  
NUMBER DATE DESCRIPTION BY



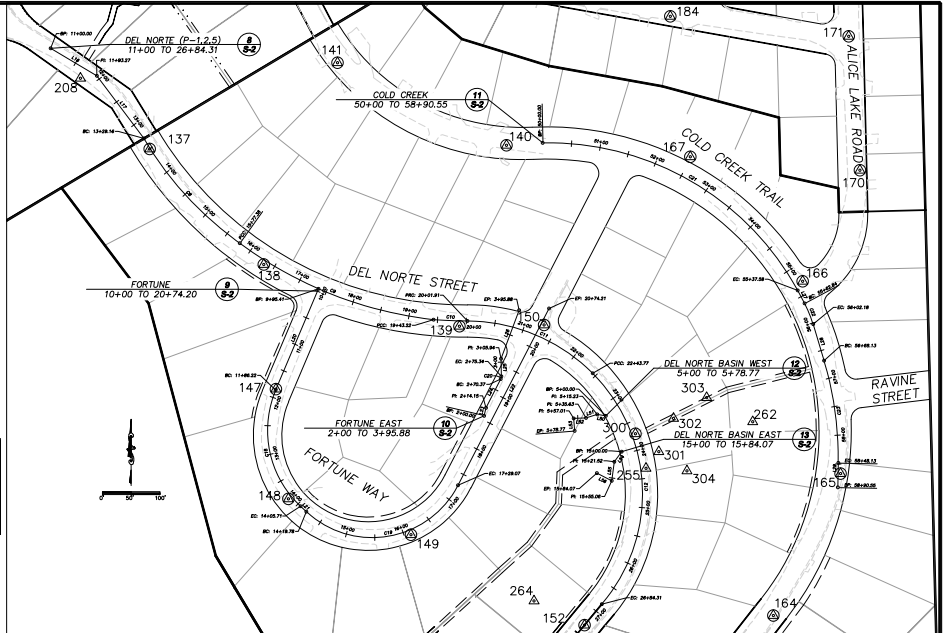
NUMBER	NORTHING	EASTING	ELEVATION	DESCRIPTION
107	2100551.83	7141841.18	6364.96	5/8" RBAR
121	2100370.12	7141815.82	6355.29	MAG NAIL
122	2100113.30	7141759.70	6352.87	MAG NAIL
123	2100164.78	7141894.54	6358.94	MAG NAIL
124	2100330.12	7142120.43	6382.68	MAG NAIL
126	2099374.12	7141904.13	6341.63	BRIDGE SPIKE
131	2099878.56	7141730.38	6347.33	MAG NAIL
132	2099577.57	7141928.63	6351.74	MAG NAIL
133	2099447.49	7142040.91	6356.94	MAG NAIL
134	2099421.13	7142182.95	6366.24	5/8" RBAR
135	2099590.72	7142346.02	6372.82	MAG NAIL
136	2099513.55	7142551.83	6395.95	5/8" RBAR
144	2099374.90	7142284.76	6358.22	HUB & TACK
191	2100079.64	7142346.06	6408.10	MAG NAIL
192	2099870.85	7142538.05	6416.94	MAG NAIL
194	2099791.32	7142263.19	6387.06	MAG NAIL
195	2099695.16	7142025.77	6370.34	MAG NAIL
198	2100348.92	7142039.78	6374.40	5/8" RBAR
201	2099901.59	7141632.85	6342.51	5/8" RBAR
207	2099453.39	7142359.48	6366.81	5/8" RBAR



NUMBER	NORTHING	EASTING	ELEVATION	DESCRIPTION
155	2097635.07	7143674.35	6514.49	MAG NAIL
156	2097219.22	7143680.59	6552.90	MAG NAIL
157	2097667.02	7143862.90	6578.87	MAG NAIL



NUMBER	NORTHING	EASTING	ELEVATION	DESCRIPTION
175	2100586.23	7143766.42	6513.11	MAG NAIL
176	2100582.22	7143317.29	6480.15	MAG NAIL
181	2100297.43	7143762.90	6521.85	MAG NAIL
188	2100266.08	7143414.70	6494.20	MAG NAIL



NUMBER	NORTHING	EASTING	ELEVATION	DESCRIPTION
137	2099330.05	7142832.17	6426.12	MAG NAIL
138	2099129.42	7143029.51	6448.39	MAG NAIL
139	2099022.20	7143369.02	6472.30	MAG NAIL
140	2099336.21	7143450.84	6497.44	MAG NAIL
141	2099479.59	7143157.49	6482.92	MAG NAIL
147	2098912.96	7143050.68	6458.40	MAG NAIL
148	2098722.76	7143072.31	6463.78	MAG NAIL
149	2098660.36	7143284.88	6470.02	MAG NAIL
150	2099024.57	7143516.07	6463.43	MAG NAIL
152	2098503.41	7143596.26	6461.41	MAG NAIL
164	2098520.18	7143913.81	6509.88	MAG NAIL
165	2098766.52	7144030.47	6484.53	MAG NAIL
166	2099100.24	7143964.84	6488.22	MAG NAIL
167	2099316.25	7143769.80	6497.17	5/8" RBAR
170	2099293.00	7144064.12	6508.42	MAG NAIL
171	2099525.42	7144044.64	6522.24	MAG NAIL
184	2099560.00	7143735.11	6526.28	MAG NAIL
208	2099452.70	7142711.37	6410.25	5/8" RBAR
255	2098775.58	7143692.87	6456.88	MAG NAIL
262	2098856.36	7143878.11	6467.25	5/8" RBAR
264	2098545.54	7143498.62	6443.17	5/8" RBAR
300	2098835.66	7143674.49	6455.64	MAG NAIL
301	2098804.37	7143715.10	6456.80	5/8" RBAR
302	2098862.29	7143740.61	6456.16	5/8" RBAR
303	2098898.43	7143798.17	6459.50	5/8" RBAR
304	2098771.20	7143763.99	6461.97	5/8" RBAR



PREPARED UNDER SUPERVISION OF:  
*Peter Kiser*  
 REGISTERED CIVIL ENGINEER DATE: 4/1/2011

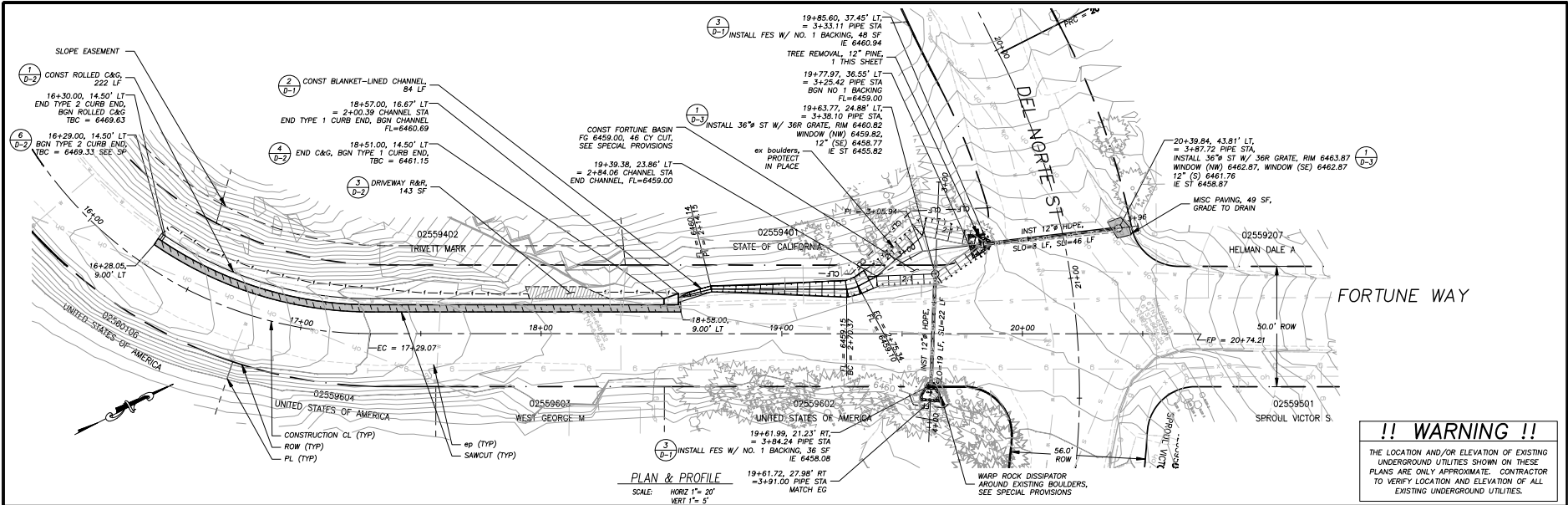


EL DORADO COUNTY  
 DEPARTMENT OF TRANSPORTATION

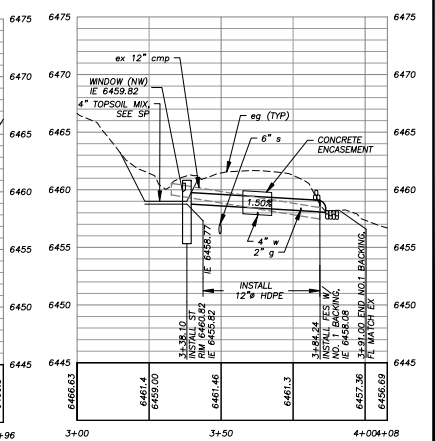
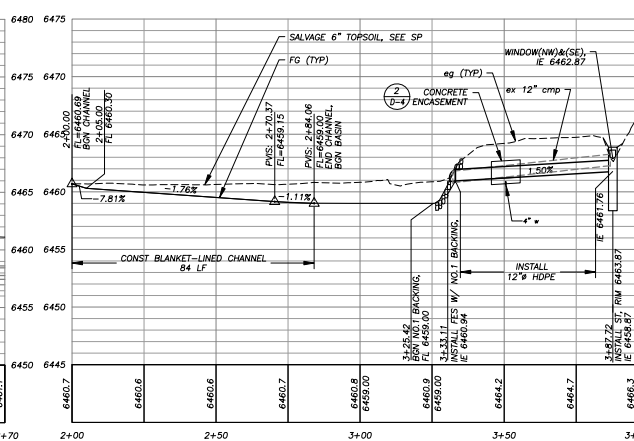
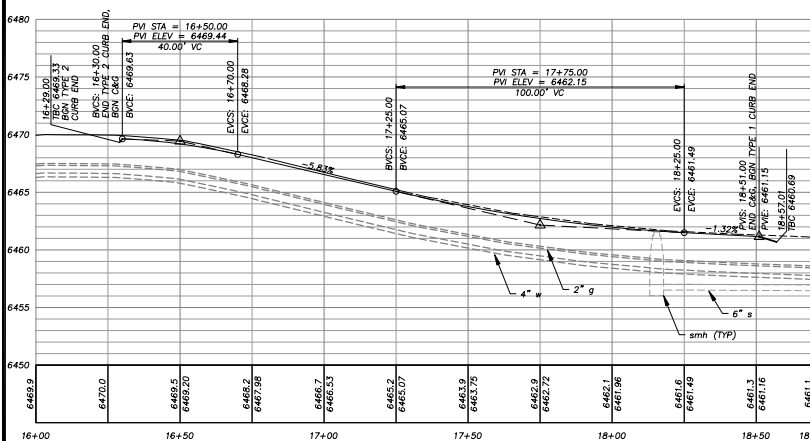
MONTGOMERY ESTATES AREA 1A  
 SURVEY ALIGNMENTS AND CONTROL

SHEET  
 S-1  
 4 of 26  
 CONTRACT NO.  
 PW 09-30485  
 CIP No.  
 95155





FOR REDUCED PLANS ORIGINAL SCALE IS IN INCHES



REVISION	DATE	DESCRIPTION	BY

PREPARED UNDER SUPERVISION OF:

REGISTERED CIVIL ENGINEER  
DATE: 4/5/2011

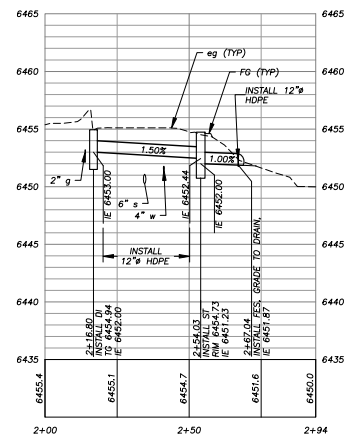
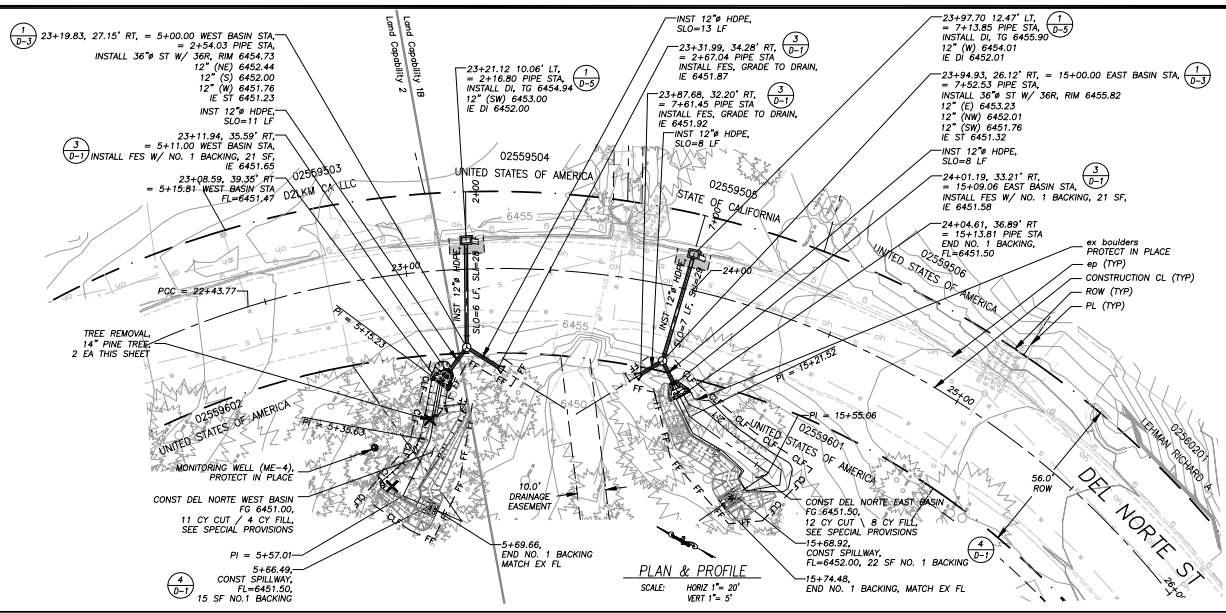
DESIGNED: DWK  
DRAWN: JTC  
CHECKED: DSP  
DATE: 03/2011  
ROAD NUMBER: 2341

**EL DORADO COUNTY**  
DEPARTMENT OF TRANSPORTATION

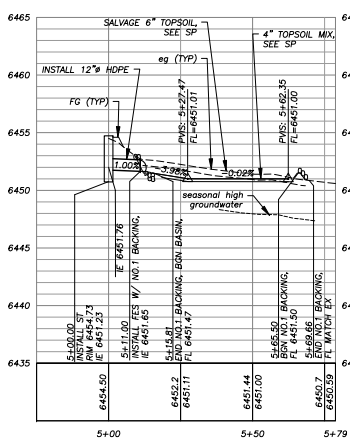
MONTGOMERY ESTATES AREA 1A  
FORTUNE WAY PLAN & PROFILE  
STA 16+00 TO 20+23.00

SHEET  
**P-01**  
6 of 26  
CONTRACT NO. 09-30485  
OF NO. 95155

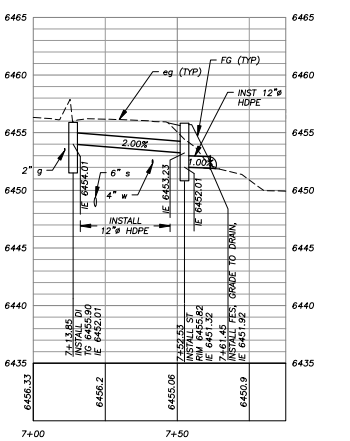
**!! WARNING !!**  
 THE LOCATION AND/OR ELEVATION OF EXISTING UNDERGROUND UTILITIES SHOWN ON THESE PLANS ARE ONLY APPROXIMATE. CONTRACTOR TO VERIFY LOCATION AND ELEVATION OF ALL EXISTING UNDERGROUND UTILITIES.



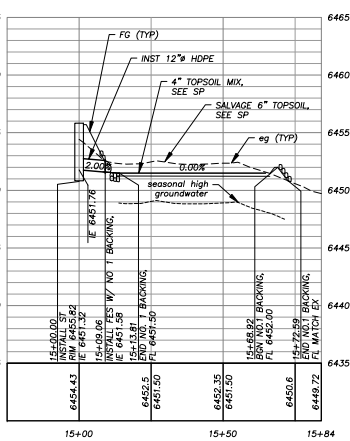
SD CL PROFILE  
 ● DEL NORTE ST 23+21



SD CL PROFILE  
 ● DEL NORTE ST 23+20



SD CL PROFILE  
 ● DEL NORTE ST 23+98



SD CL PROFILE  
 ● DEL NORTE ST 23+95

FOR REDUCED PLANS ORIGINAL SCALE IS IN INCHES

REVISION	NUMBER	DATE	DESCRIPTION	BY

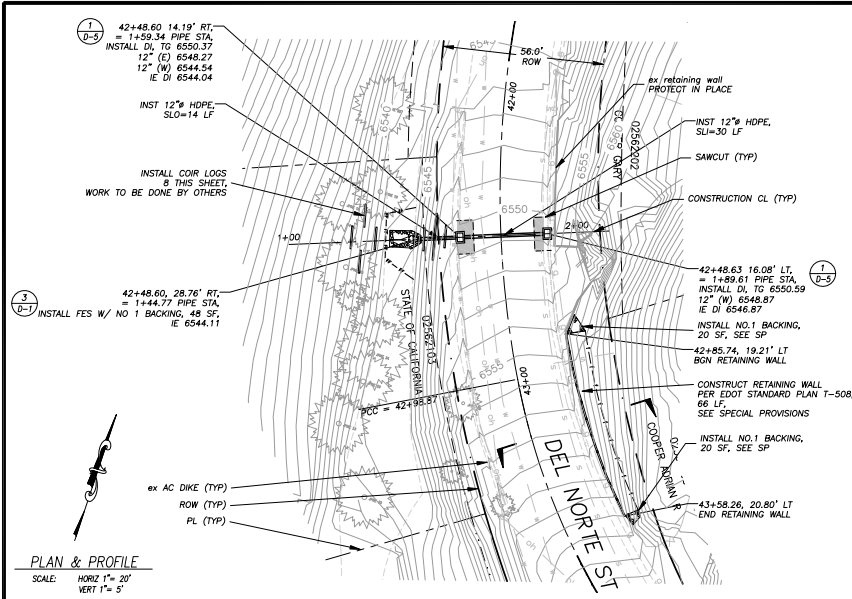
DESIGNED: DWK  
 DRAWN: JTC  
 CHECKED: DSP  
 DATE: 03/2011  
 ROAD NUMBER: 232E

EL DORADO COUNTY  
 DEPARTMENT OF TRANSPORTATION

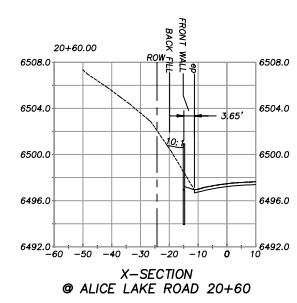
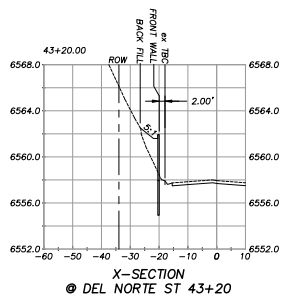
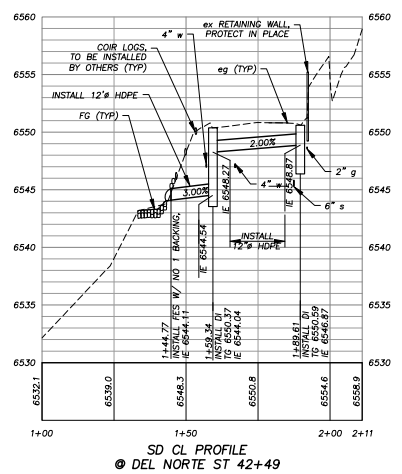
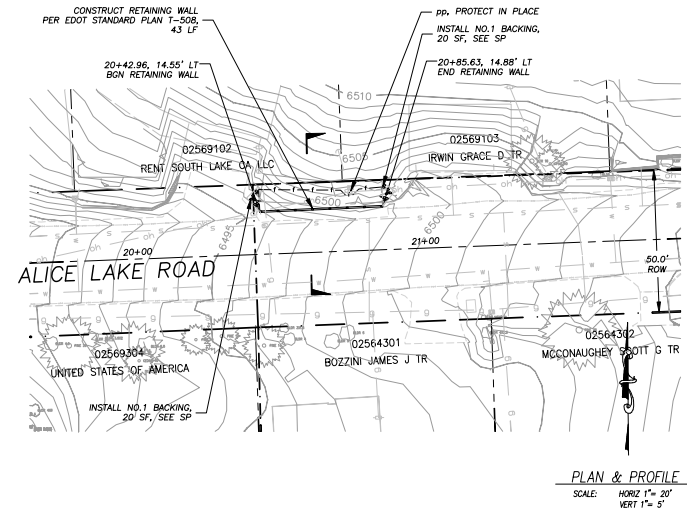
MONTGOMERY ESTATES AREA 1A  
 DEL NORTE ST PLAN & PROFILE  
 STA 23+00.00 TO 25+00.00

SHEET P-02  
 7 of 26  
 CONTRACT NO. PW 09-30485  
 CP No. 95155

FOR REDUCED PLANS ORIGINAL SCALE IS IN INCHES



**!! WARNING !!**  
 THE LOCATION AND/OR ELEVATION OF EXISTING UNDERGROUND UTILITIES SHOWN ON THESE PLANS ARE ONLY APPROXIMATE. CONTRACTOR TO VERIFY LOCATION AND ELEVATION OF ALL EXISTING UNDERGROUND UTILITIES.



REVISION	NUMBER	DATE	DESCRIPTION	BY



PREPARED UNDER SUPERVISION OF:  
*Peter Anthony*  
 REGISTERED CIVIL ENGINEER  
 DATE: 4/5/2011

DESIGNED: DWK  
 DRAWN: JTC  
 CHECKED: DSP  
 DATE: 03/2011  
 ROAD NUMBER: 2326

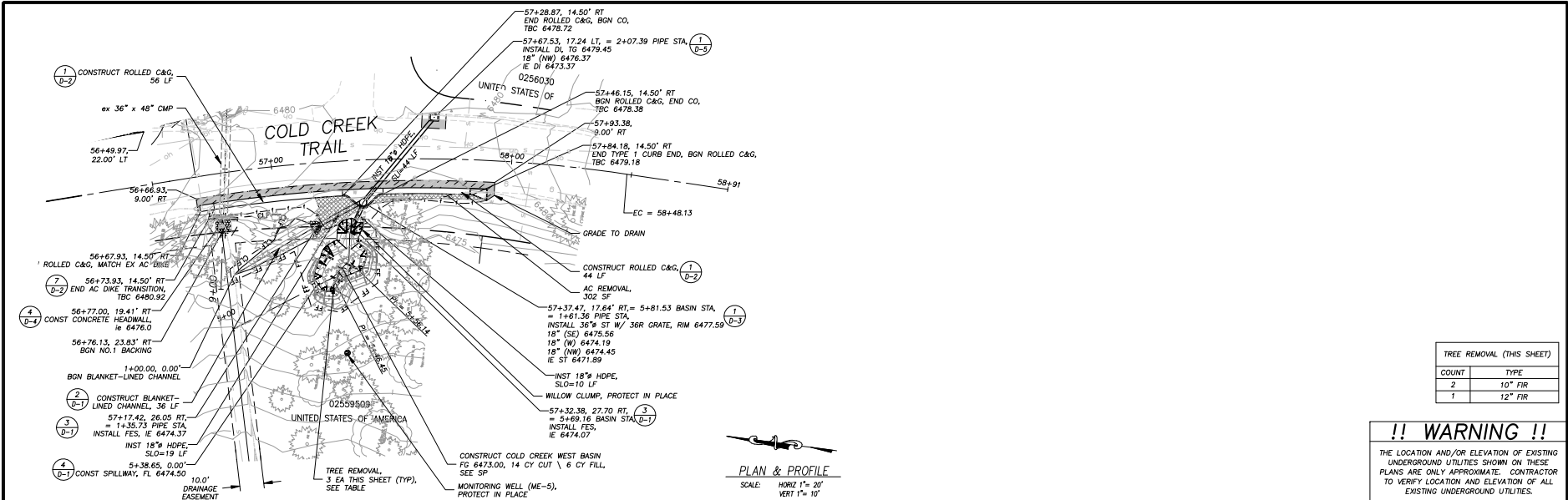


EL DORADO COUNTY  
 DEPARTMENT OF TRANSPORTATION

MONTGOMERY ESTATES AREA 1A  
 DEL NORTE ST / ALICE LAKE ROAD PLAN & PROFILE  
 STA 20+00.00 TO STA 21+00.00 / STA 42+00.00 TO 43+50.00

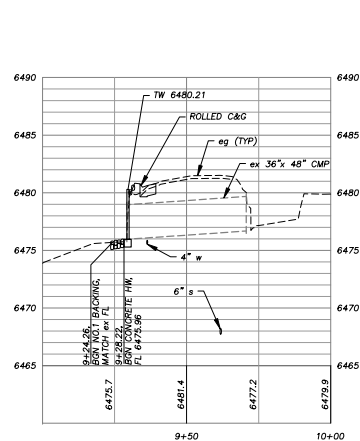
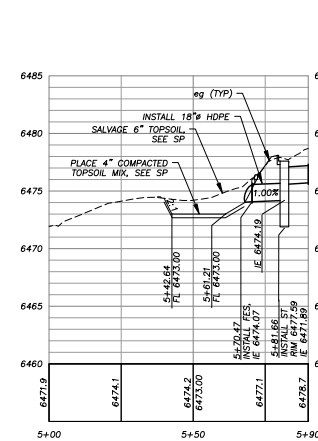
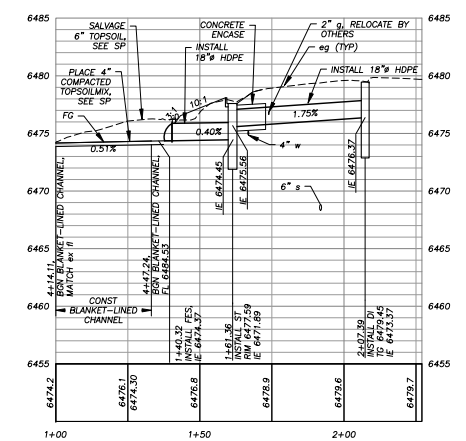
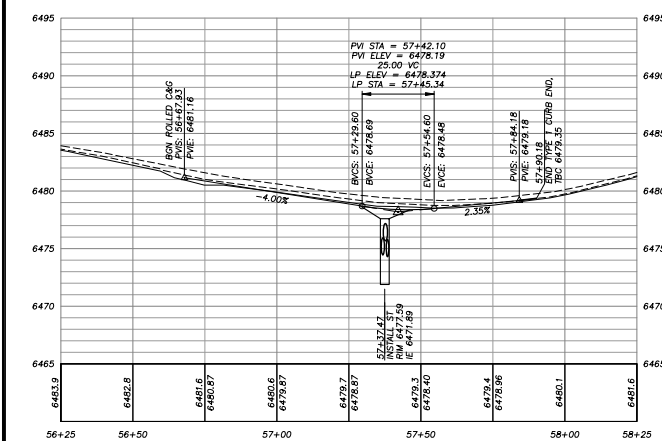
SHEET  
 P-03  
 8 of 26  
 CONTRACT NO.  
 PW 09-30485  
 CIP No. 95155





TREE REMOVAL (THIS SHEET)	
COUNT	TYPE
2	10" FIR
1	12" FIR

**!! WARNING !!**  
THE LOCATION AND/OR ELEVATION OF EXISTING UNDERGROUND UTILITIES SHOWN ON THESE PLANS ARE ONLY APPROXIMATE. CONTRACTOR TO VERIFY LOCATION AND ELEVATION OF ALL EXISTING UNDERGROUND UTILITIES.



FOR REDUCED PLANS ORIGINAL SCALE IS IN INCHES

REVISION	NUMBER	DATE	DESCRIPTION	BY

PREPARED UNDER SUPERVISION OF:  
 REGISTERED PROFESSIONAL ENGINEER  
 DATE: 4/12/2011

DESIGNED: DWK  
 CHECKED: DSP  
 DATE: 03/2011  
 ROAD NUMBER: 2322

**EL DORADO COUNTY**  
DEPARTMENT OF TRANSPORTATION

MONTGOMERY ESTATES AREA 1A  
 COLD CREEK BASIN  
 STA 56+86.34 TO 57+90.94

SHEET P-04  
 9 of 26  
 CONTRACT NO. PW 09-30485  
 CP No. 95155

FOR REDUCED PLANS ORIGINAL SCALE IS IN INCHES

REVISION	NUMBER	DATE	DESCRIPTION	BY



PREPARED UNDER SUPERVISION OF:  
*Peter Rodriguez*  
 REGISTERED CIVIL ENGINEER  
 DATE: 4/5/2011

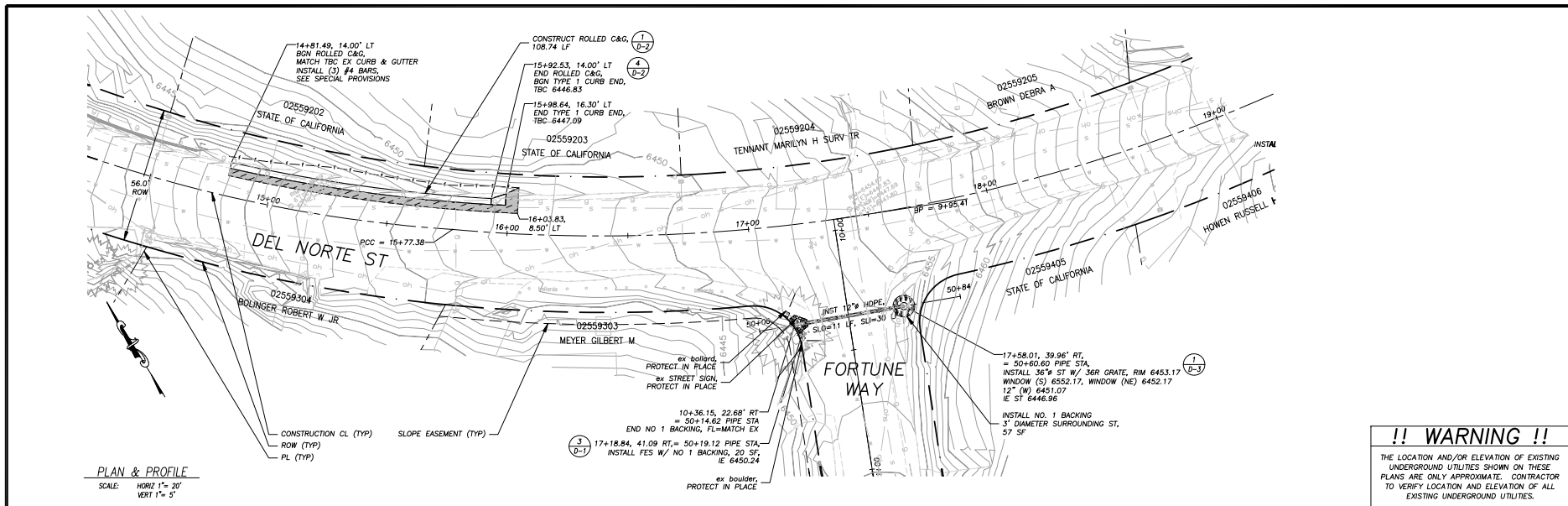
DESIGNED: DWK  
 DRAWN: JTC  
 CHECKED: DSP  
 DATE: 03/2011  
 ROAD NUMBER: 2326



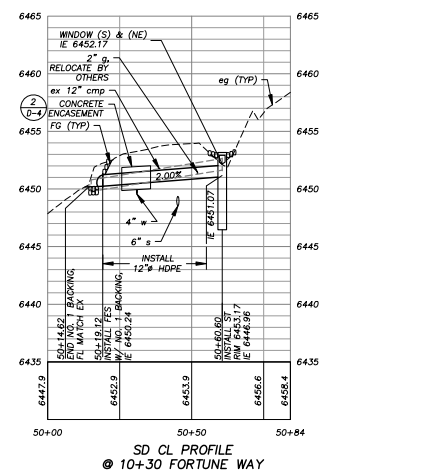
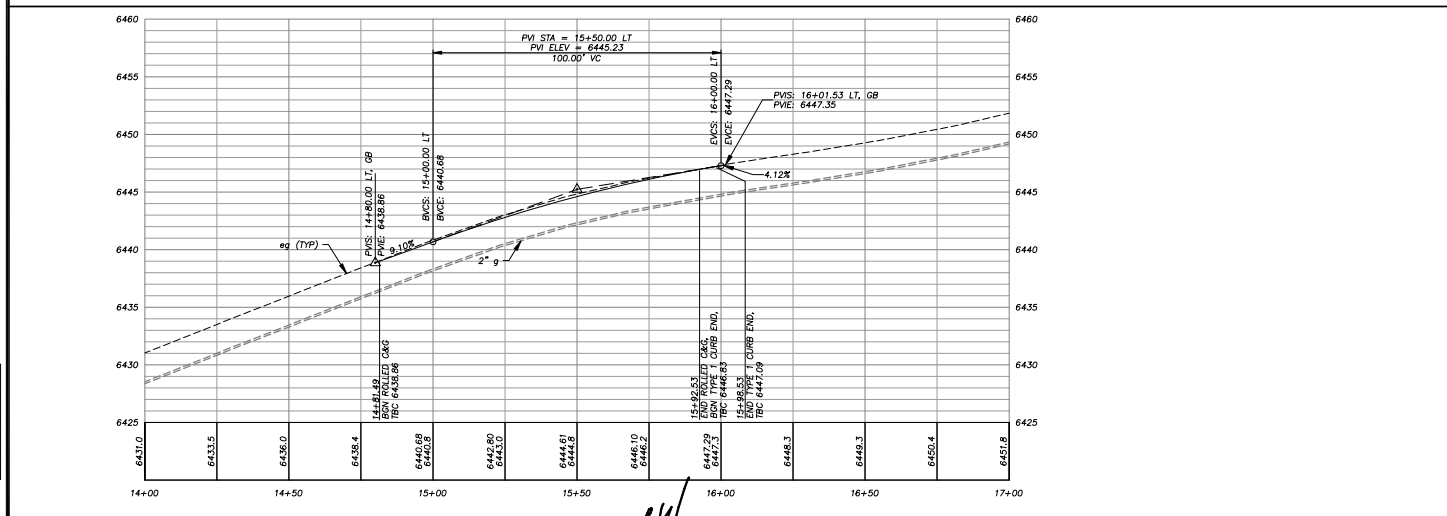
EL DORADO COUNTY  
 DEPARTMENT OF TRANSPORTATION

MONTGOMERY ESTATES AREA 1A  
 DEL NORTE ST PLAN & PROFILE  
 STA 14+25.00 TO 19+00.00

SHEET  
**P-05**  
 10 of 26  
 CONTRACT NO.  
**PW 09-30485**  
 OF No. 95155

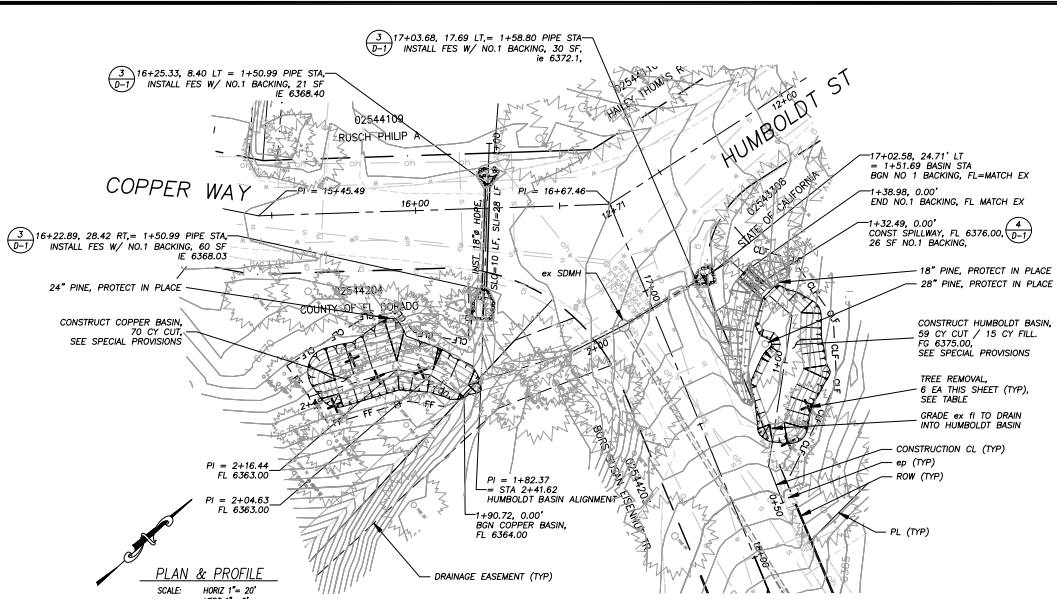


**!! WARNING !!**  
 THE LOCATION AND/OR ELEVATION OF EXISTING UNDERGROUND UTILITIES SHOWN ON THESE PLANS ARE ONLY APPROXIMATE. CONTRACTOR TO VERIFY LOCATION AND ELEVATION OF ALL EXISTING UNDERGROUND UTILITIES.

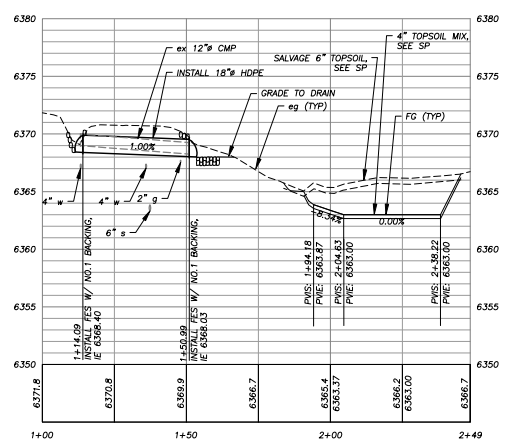


**!! WARNING !!**  
 THE LOCATION AND/OR ELEVATION OF EXISTING UNDERGROUND UTILITIES SHOWN ON THESE PLANS ARE ONLY APPROXIMATE. CONTRACTOR TO VERIFY LOCATION AND ELEVATION OF ALL EXISTING UNDERGROUND UTILITIES.

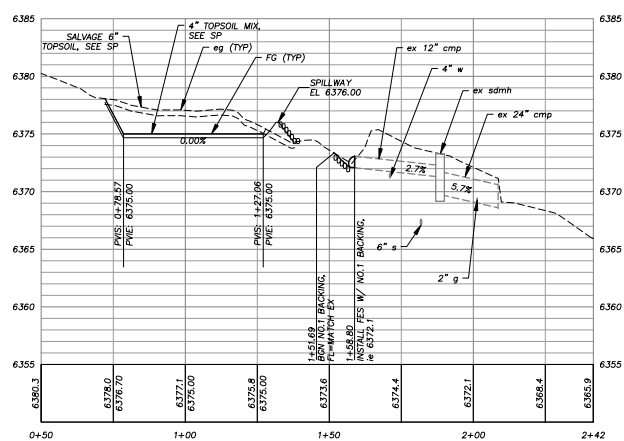
TREE REMOVAL (THIS SHEET)	
COUNT	TYPE
2	10" PINE
1	12" PINE
1	15" PINE
2	18" PINE



**PLAN & PROFILE**  
 SCALE: HORIZ 1" = 20'  
 VERT 1" = 5'



**CL PROFILE**  
 ● COPPER WAY & COPPER BASIN



**CL PROFILE**  
 ● HUMBOLDT BASIN

FOR REDUCED PLANS ORIGINAL SCALE IS IN INCHES

REVISION	NUMBER	DATE	DESCRIPTION	BY



PREPARED UNDER SUPERVISION OF:  
 REGISTERED CIVIL ENGINEER  
 DATE: 4/1/2011

DESIGNED: DWK  
 DRAWN: JTC  
 CHECKED: DSP  
 DATE: 03/2011  
 ROAD NUMBER: 2321

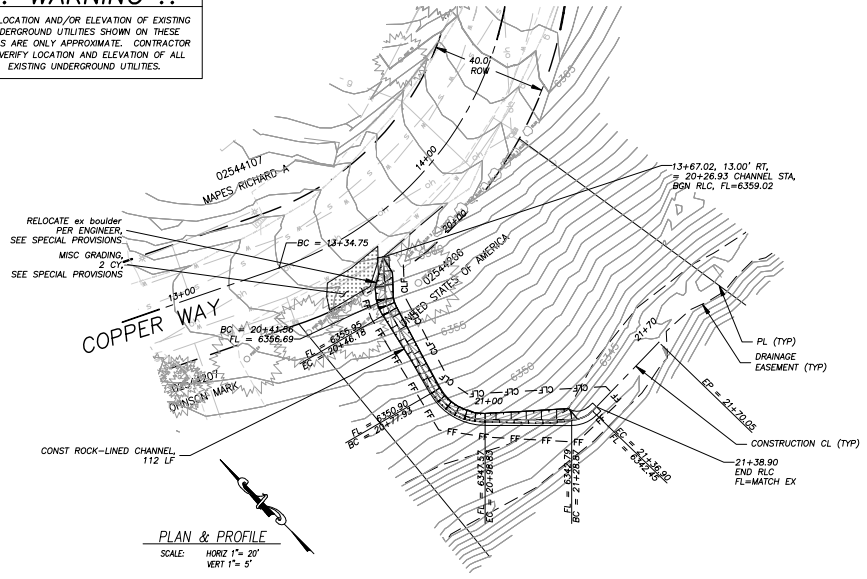


**EL DORADO COUNTY**  
 DEPARTMENT OF TRANSPORTATION

**MONTGOMERY ESTATES AREA 1A**  
 COPPER WAY STA PLAN & PROFILE  
 15+45.49 TO 18+00.00

SHEET  
**P-06**  
 11 of 26  
 CONTRACT NO.  
**PW 09-30485**  
 OF NO.  
 95155

**!! WARNING !!**  
 THE LOCATION AND/OR ELEVATION OF EXISTING UNDERGROUND UTILITIES SHOWN ON THESE PLANS ARE ONLY APPROXIMATE. CONTRACTOR TO VERIFY LOCATION AND ELEVATION OF ALL EXISTING UNDERGROUND UTILITIES.



ORIGINAL SCALE IS IN INCHES  
 2  
 1  
 0  
 FOR REDUCED PLANS  
 REVISION  
 NUMBER DATE DESCRIPTION BY

REVISION	NUMBER	DATE	DESCRIPTION	BY



PREPARED UNDER SUPERVISION OF:  
*[Signature]*  
 REGISTERED CIVIL ENGINEER  
 DATE: 4/5/2011

DESIGNED: DWK  
 DRAWN: JTC  
 CHECKED: DSP  
 DATE: 03/2011  
 ROAD NUMBER: 2321

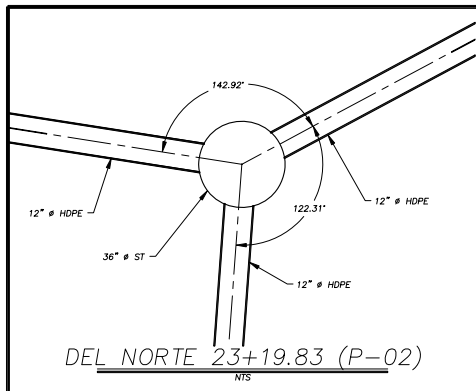
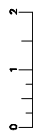


EL DORADO COUNTY  
 DEPARTMENT OF TRANSPORTATION

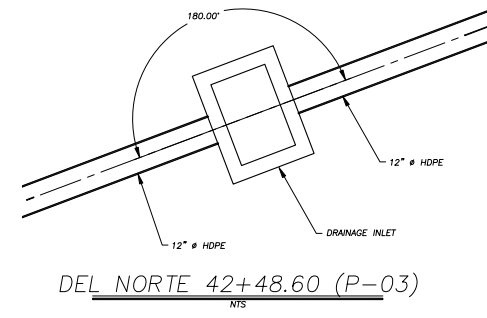
MONTGOMERY ESTATES AREA 1A  
 COPPER WAY ROCK LINED CHANNEL  
 STA 13+67.02

SHEET  
**P-07**  
 12 of 26  
 CONTRACT NO.  
**PW 09-30485**  
 OF NO.  
 95155

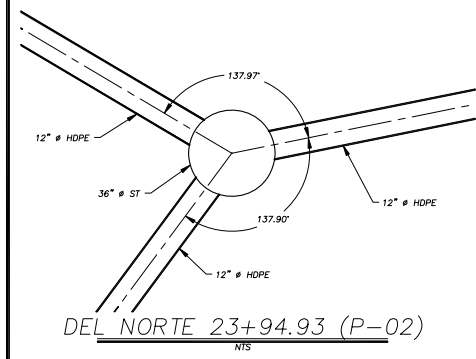
FOR REDUCED PLANS ORIGINAL SCALE IS IN INCHES



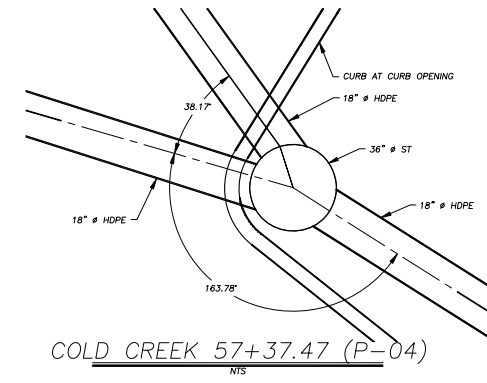
DEL NORTE 23+19.83 (P-02)  
NTS



DEL NORTE 42+48.60 (P-03)  
NTS



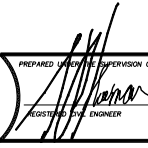
DEL NORTE 23+94.93 (P-02)  
NTS



COLD CREEK 57+37.47 (P-04)  
NTS

REVISION	NUMBER	DATE	DESCRIPTION	BY



PREPARED UNDER SUPERVISION OF:  
  
 REGISTERED CIVIL ENGINEER  
 DATE: 4/5/2011

DESIGNED: DWK  
 DRAWN: DWK  
 CHECKED: DWK  
 DATE: 03/2011  
 ROAD NUMBER:

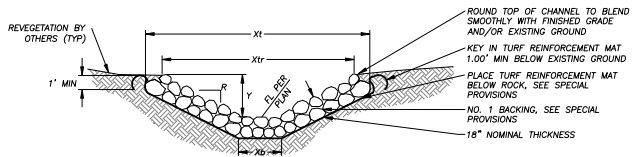


EL DORADO COUNTY  
 DEPARTMENT OF TRANSPORTATION

MONTGOMERY ESTATES AREA 1A  
 HORIZONTAL CONTROL

SHEET  
 H-1  
 13 of 26  
 CONTRACT NO.  
 PW 09-30485  
 CIP NO.  
 95155

ORIGINAL SCALE IS IN INCHES  
FOR REDUCED PLANS

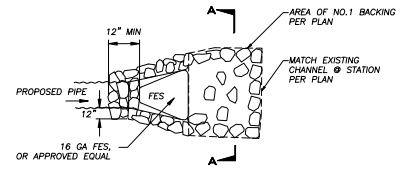


PLAN SHEET	STREET AND STATION	LF	TOP WIDTH, X <sub>t</sub> (EXCAVATION)	TOP WIDTH, X <sub>r</sub> (ROCK)	WIDTH, X <sub>b</sub> (EXCAVATION)	DEPTH, Y	SLOPE RATIO, R
P-07	COPPER WAY	112	9.0	6.0	1.5	VARIES 1.0' - 1.5'	2:1

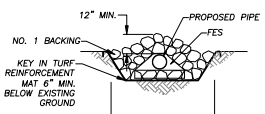
- NOTES:
1. "Y" DEPICTS MIN REQ'D DEPTH OF CHANNEL. FINISHED TOP WIDTH AND SIDE SLOPE HEIGHT MAY VARY DEPENDING ON EXISTING TERRAIN.
  2. SEE SPECIAL PROVISIONS FOR SUBGRADE COMPACTION REQUIREMENTS.

**ROCK-LINED CHANNEL**  
NTS

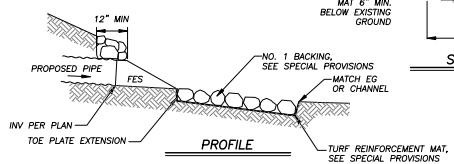
1  
D-1



**PLAN**



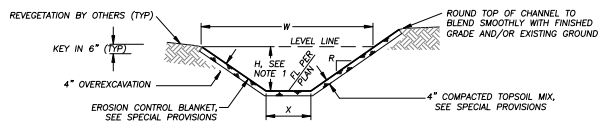
**SECTION**



**PROFILE**

**FLARED END SECTION  
W/ NO.1 BACKING**  
NTS

3  
D-1

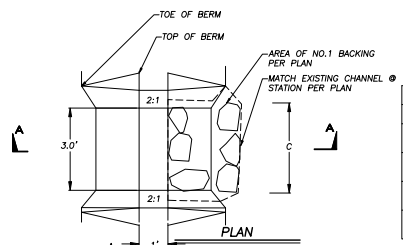


PLAN SHEET	STREET AND STATION	LF	TOP WIDTH, W	BOTTOM WIDTH, X	DEPTH, H	SLOPE RATIO, R
P-02	FORTUNE WAY	77	6.0	0.0	VARIES 0.5'-1.3'	2:1
P-04	COLD CREEK TRAIL	35	6.0	0.0	VARIES 0.5'-1.5'	2:1

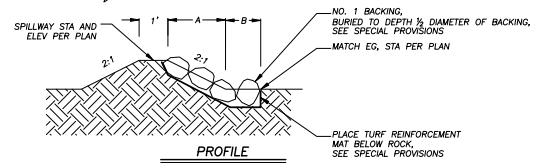
- NOTES:
1. "H" DEPICTS MIN REQ'D HEIGHT OF CHANNEL. FINISHED TOP WIDTH AND SIDE SLOPE HEIGHT MAY VARY DEPENDING ON EXISTING TERRAIN AND THE NEED TO MAINTAIN A 2' SHOULDER AT ROADWAYS. SEE PLANS AND CROSS SECTION SHEETS FOR GRADING LIMITS.
  2. DIMENSIONS SPECIFIED ARE TO BE MEASURED FROM TOP OF EROSION CONTROL BLANKET.
  3. SEE SPECIAL PROVISIONS FOR OVEREXCAVATION, TOPSOIL MIX, AND COMPACTION REQUIREMENTS.

**BLANKET-LINED SWALE**  
NTS

2  
D-1



**PLAN**



**PROFILE**

**SPILLWAY**  
NTS

4  
D-1

MINIMUM LIMITS OF NO. 1 BACKING				
BASIN NAME	SHEET	A	B	C
DEL NORTE WEST	P-02	1'-6"	1'-0"	4'-0"
DEL NORTE EAST	P-02	3'-0"	1'-0"	4'-0"
COLD CREEK WEST	P-04	NA	NA	NA
HUMBOLDT	P-06	5'-0"	1'-0"	4'-0"

REVISION	NUMBER	DATE	DESCRIPTION	BY



PREPARED UNDER SUPERVISION OF:  
*David L. Johnson*  
REGISTERED PROFESSIONAL ENGINEER  
DATE: 4/5/2011

DESIGNED: DWK  
DRAWN: CAD  
CHECKED: CHK  
DATE: 03/2011  
ROAD NUMBER: ###

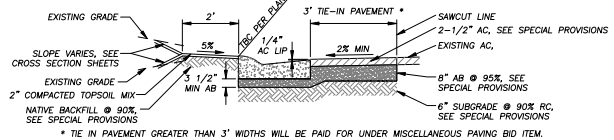
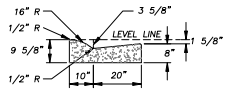


EL DORADO COUNTY  
DEPARTMENT OF TRANSPORTATION

MONTGOMERY ESTATES AREA 1A  
DETAILS

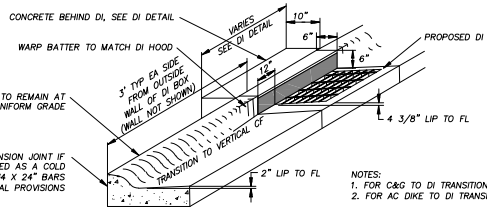
SHEET  
D-1  
14 of 26  
CONTRACT NO.  
PW 09-30485  
JOB No. 95155

ORIGINAL SCALE IS IN INCHES  
 FOR REDUCED PLANS  
 REVISION  
 NUMBER DATE DESCRIPTION BY



**ROLLED CURB & GUTTER W/TIE-IN PAVEMENT**

1  
D-2

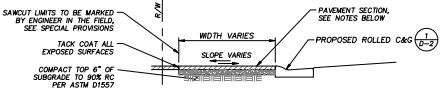


**C&G/AC DIKE TO DI**

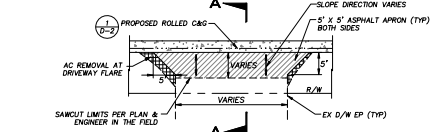
**TRANSITION TO DRAINAGE INLET**

2  
D-2

- CONCRETE NOTES: THIS SHEET
- THE STRING LINE SHALL BE SET SUFFICIENTLY IN ADVANCE OF THE SCHEDULED POUR, BUT IN NO CASE LESS THAN 2 HOURS, TO ALLOW THE ENGINEER TO CHECK THE LINE AGAINST CUT LINE GRADES AND PROVIDE TIME FOR ADJUSTMENT, IF NECESSARY.
  - CURB AND GUTTER SHALL BE CONSTRUCTED MONOLITHICALLY.
  - LOCATE 1/2" PREMOULDED TRANSVERSE EXPANSION JOINTS OF ASPHALT IMPREGNATED CELOTEX IN CURB AND GUTTER AT 200' INTERVALS, AT CURB RETURNS, AT ANY TRANSITION FROM MACHINE EXTRUDED CURB TO FORMED CURB, AND AT ANY LOCATION WHERE CONCRETE PLACEMENT WILL STOP LONG ENOUGH FOR CONCRETE TO SET PRIOR TO CONTINUING WITH ADDITIONAL CONCRETE. PROVIDE 3" DEEP CRACK (WEAKENED PLANE) JOINT EVERY 10'.
  - ALL CONCRETE FOR THOSE ITEMS SHOWN ON THIS SHEET SHALL BE FINISHED BY BRUSHING WITH A SOFT BROOM AND SPRAYED UNIFORMLY WITH A CLEAR PIGMENTED CURING COMPOUND CONFORMING TO SECTION 90.7 OF THE AMENDMENTS TO JULY 2002 STANDARD SPECIFICATIONS.
  - ALL CURB AND GUTTER SHALL BE WATER TESTED AND SHALL DRAIN WITH NO PONDING. IF PONDING DOES OCCUR, THE CONTRACTOR SHALL BE RESPONSIBLE FOR REMOVAL AND REPLACEMENT OF A SUFFICIENT AMOUNT OF CURB AND GUTTER TO ELIMINATE THE PONDING. GRINDING OF THE FLOWLINE WILL NOT BE PERMITTED.
  - THE AREA TO BE REGRADED BEHIND THE CURB VARIES; SEE CROSS SECTION SHEETS. CONTRACTOR TO GRADE AND PREPARE AREA FOR REVEGETATION BY OTHERS. NATIVE MATERIAL IS ACCEPTABLE FOR FILL, EXCLUDING ROCKS LARGER THAN 1 1/2" IN DIMENSION. BACKFILL, REGRADES, AND TOPSOIL MIX PLACEMENT AND COMPACTION, WILL BE INCLUDED IN THE CURB AND GUTTER BID PRICE. MULCH AND TACKIFIER APPLICATIONS BY CONTRACTOR AFTER REVEGETATION IS COMPLETE.
  - SEE SPECIAL PROVISIONS FOR SUBGRADE PREPARATION REQUIREMENTS.



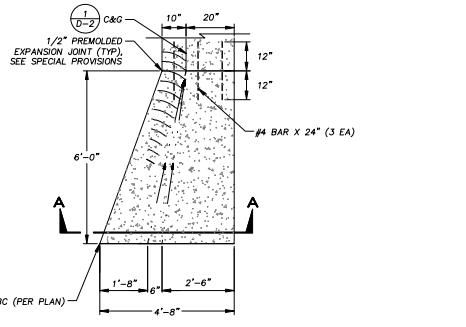
**SECTION A-A**



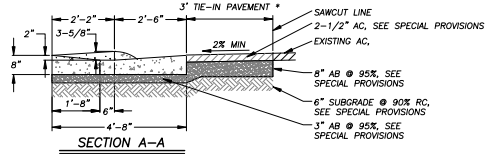
- NOTES:
- DRIVEWAY PAVEMENT REPLACEMENT TO BE 2 1/2" AC OVER 4" AB @ 95% RC.
  - MATCH WIDTH OF EXISTING DRIVEWAY UNLESS NOTED OTHERWISE ON PLANS.
  - THE ENGINEER SHALL MARK THE SAWCUT LIMITS AT EACH DRIVEWAY.
  - DRIVEWAY PAVING SHALL BE WARPED TO MAINTAIN A SMOOTH TRANSITION AND PREVENT PONDING OR TRAPPING WATER.
  - AC REMOVAL AT DRIVEWAY FLARES INCLUDED IN BID ITEM.

**DRIVEWAY R&R**

3  
D-2



**PLAN**

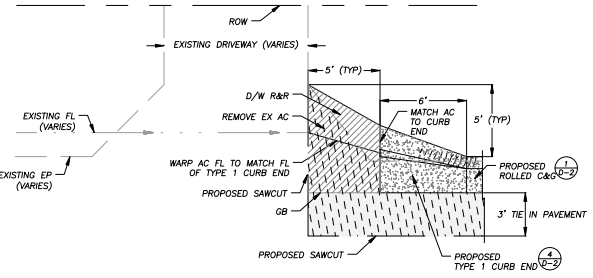


**SECTION A-A**

- NOTES:
- IN AREAS WHERE TYPE 1 CURB END TRANSITIONS TO AD DRIVEWAY, CONTRACTOR TO CONSTRUCT TRANSITION PER DETAIL 5/D-2

**TYPE 1 CURB END**

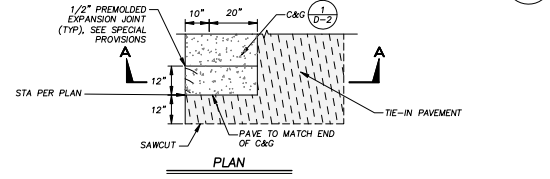
4  
D-2



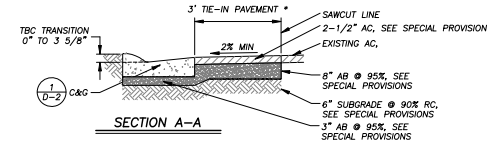
- NOTES:
- DRIVEWAY PAVEMENT REPLACEMENT TO BE 2 1/2" AC OVER 4" AB @ 95% RC.
  - THE ENGINEER SHALL MARK THE SAWCUT LIMITS AT EACH DRIVEWAY.
  - DRIVEWAY PAVING SHALL BE WARPED TO MAINTAIN A SMOOTH TRANSITION AND PREVENT PONDING.

**D/W AC TRANSITION TO TYPE 1 CURB END**

5  
D-2



**PLAN**

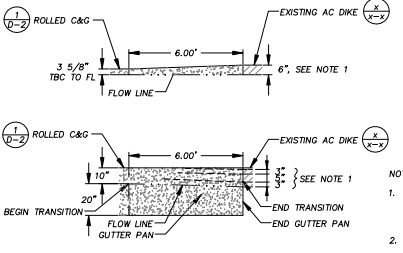


**SECTION A-A**

- NOTE: PAYMENT FOR TYPE 2 CURB END SHALL BE AS PER LF OF ROLLED C&G BID PRICE.  
\* TIE IN PAVEMENT GREATER THAN 3' WIDTHS WILL BE PAID FOR UNDER MISCELLANEOUS PAVING BID ITEM.

**TYPE 2 CURB END**

6  
D-2



**AC DIKE TRANSITION**

7  
D-2

REVISION	NUMBER	DATE	DESCRIPTION	BY



PREPARED UNDER SUPERVISION OF:  
 REGISTERED CIVIL ENGINEER  
 DATE: 4/5/2011

DESIGNED: DES CAD  
 CHECKED: CHK DATE: 03/2011  
 ROAD NUMBER: ####

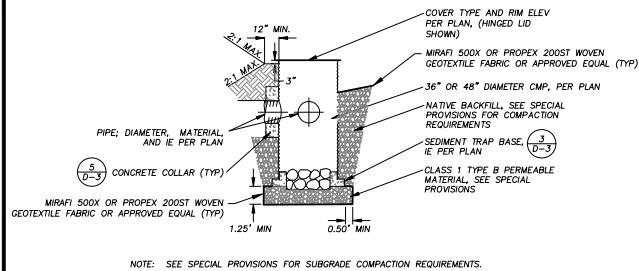


EL DORADO COUNTY  
 DEPARTMENT OF TRANSPORTATION

MONTGOMERY ESTATES AREA 1A  
 DETAILS

SHEET  
 D-2  
 15 OF 26  
 CONTRACT NO.  
 PW 09-30485  
 OF NO. 95155

ORIGINAL SCALE IS IN INCHES  
 FOR REDUCED PLANS  
 2  
 1  
 0  
 DRAWING NUMBER: 11-0041.C.16  
 PROJECT: 09-30485-MONTGOMERY-ESTATES-AREA-1A-DETAILED-30-50-00

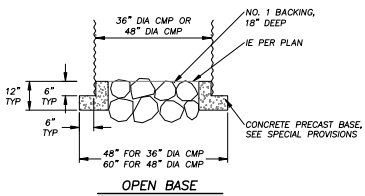


NOTE: SEE SPECIAL PROVISIONS FOR SUBGRADE COMPACTION REQUIREMENTS.

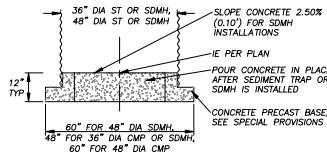
**SEDIMENT TRAP**

NIS

1  
D-3



**OPEN BASE**



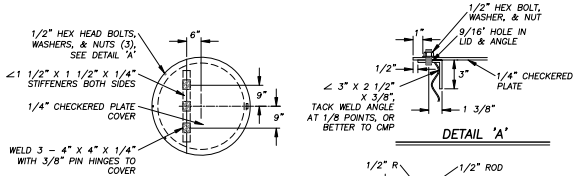
**SEALED BASE**

- NOTES:
1. SEE SPECIAL PROVISIONS FOR CONCRETE SPECIFICATIONS.
  2. SEE SPECIAL PROVISIONS FOR SUBGRADE COMPACTION REQUIREMENTS.

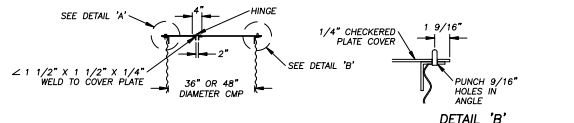
**ST & STORM DRAIN MANHOLE BASES**

NIS

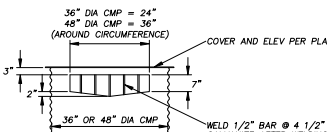
3  
D-3



**DETAIL 'A'**



**DETAIL 'B'**



**SEDIMENT TRAP WINDOW**

NIS

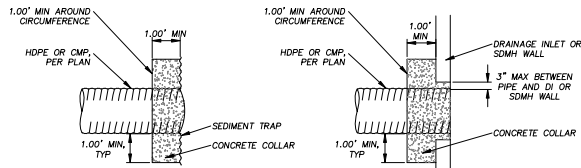
4  
D-3



**HINGED LID**

NIS

2  
D-3



NOTE: SEE SPECIAL PROVISIONS FOR CONCRETE SPECIFICATIONS.

**CONCRETE COLLAR**

NIS

5  
D-3

REVISION	NUMBER	DATE	DESCRIPTION	BY



PREPARED UNDER SUPERVISION OF:  
*Peter R. Hana*  
 REGISTERED CIVIL ENGINEER  
 DATE: 4/5/2011

DESIGNED: DES CAD  
 CHECKED: CHK 03/2011  
 ROAD NUMBER: ###

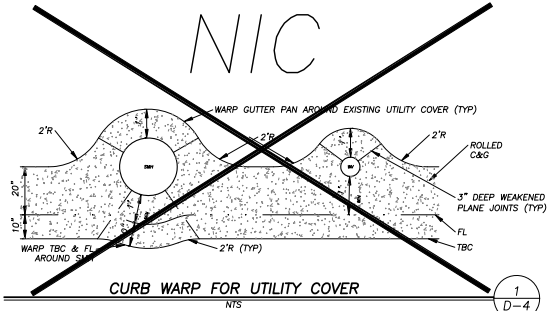


**EL DORADO COUNTY**  
 DEPARTMENT OF TRANSPORTATION

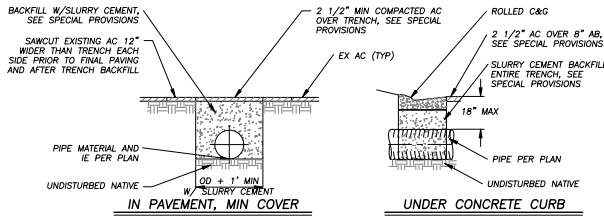
MONTGOMERY ESTATES AREA 1A  
 DETAILS

SHEET  
**D-3**  
 16 of 26  
 CONTRACT NO.  
**PW 09-30485**  
 CIP No. 95155

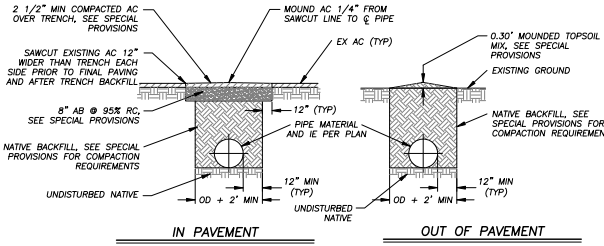




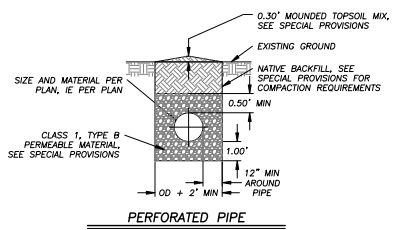
**CURB WARP FOR UTILITY COVER**  
NTS



**IN PAVEMENT, MIN COVER**      **UNDER CONCRETE CURB**



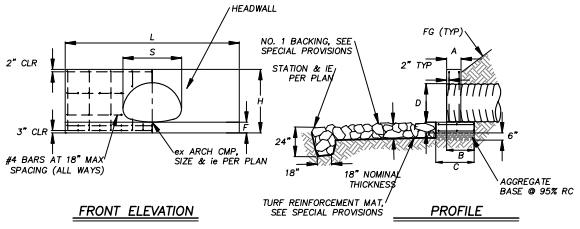
**IN PAVEMENT**      **OUT OF PAVEMENT**



**PERFORATED PIPE**

- NOTES:
- FOR COMPACTION REQUIREMENTS SEE SPECIAL PROVISIONS.
  - SEE SPECIAL PROVISIONS FOR LOCATIONS WHERE PIPE TRENCH BACKFILL SHALL BE SLURRY CEMENT.
  - ASTM D 2321

**PIPE TRENCH**  
NTS

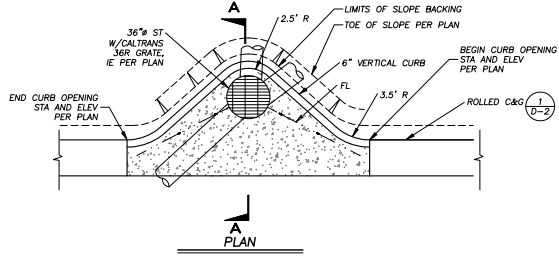


**FRONT ELEVATION**      **PROFILE**

HEADWALL FOR ARCH PIPE								
	A	B	C	D	F	H	S	
36" X 48"	0'-9"	1'-5"	2'-0"	3'-0"	0'-8"	4'-11"	14'-6"	4'-0"

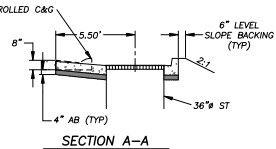
NOTE: CHAMFER ALL EXPOSED CORNERS NOT ROUNDED TO 3/4"

**CONCRETE HEADWALL FOR ARCH PIPE**  
NTS



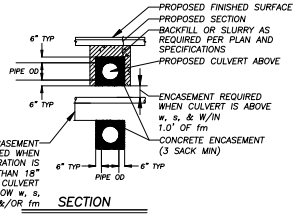
**PLAN**

- NOTES:
- FOR CONCRETE SPECIFICATIONS, SEE CONCRETE NOTES ON SHEET D-2 AND SPECIAL PROVISIONS.
  - SEE SPECIAL PROVISIONS FOR SUBGRADE COMPACTION REQUIREMENTS.

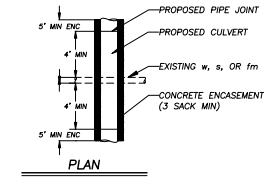


**SECTION A-A**

**CURB OPENING - CENTER**  
NTS



**SECTION**



**PLAN**

**CONCRETE ENCASMENT**  
NTS

FOR REDUCED PLANS ORIGINAL SCALE IS IN INCHES

REVISION	NUMBER	DATE	DESCRIPTION	BY



PREPARED UNDER SUPERVISION OF:  
 REGISTERED CIVIL ENGINEER  
 DATE: 4/5/2011

DESIGNED: DES CAD  
 CHECKED: CHK DATE: 03/2011  
 ROAD NUMBER: ###

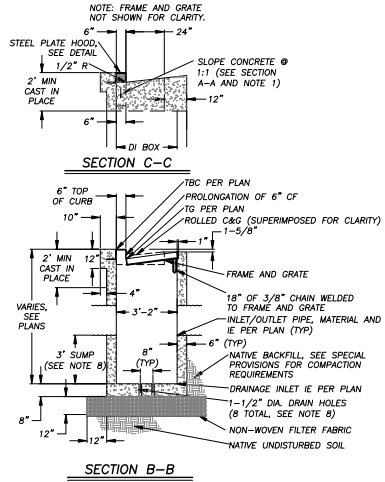
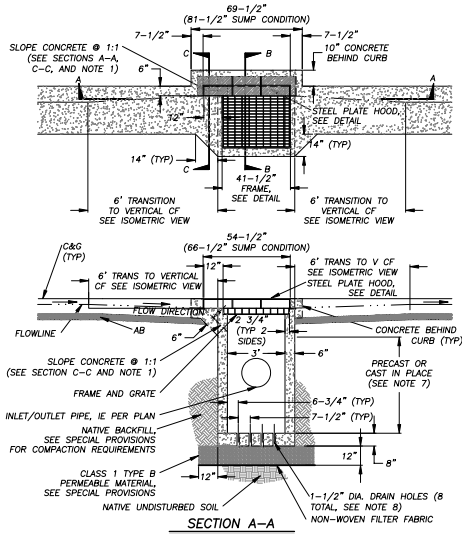


EL DORADO COUNTY  
 DEPARTMENT OF TRANSPORTATION

MONTGOMERY ESTATES AREA 1A  
 DETAILS

SHEET  
**D-4**  
 17 of 26  
 CONTRACT NO.  
 PW 09-30485  
 OF NO.  
 95155

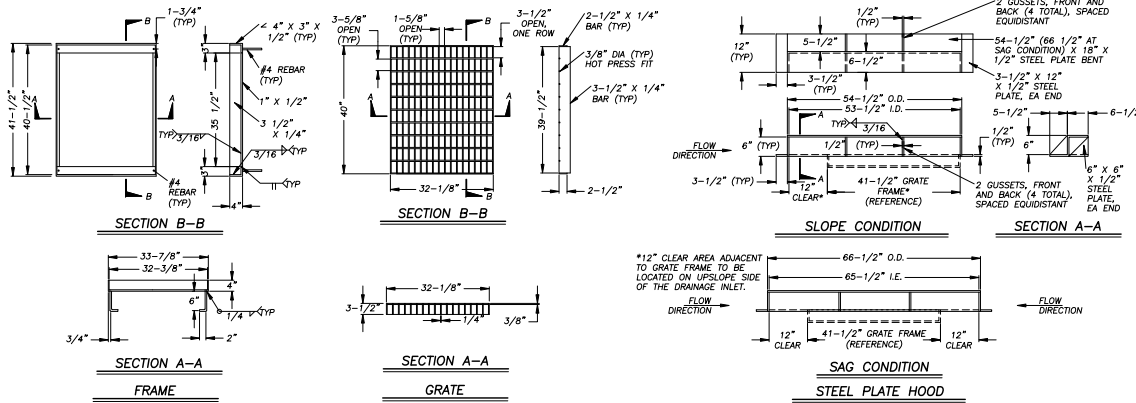
FOR REDUCED PLANS ORIGINAL SCALE IS IN INCHES Drawing notes shall be project/ISSUED/changes/APP/08/04/14\_12\_375\_001\_26-5649



- 1**  
D-5
- DRAINAGE INLET NOTES:**
1. THE 1:1 SLOPED CONCRETE SECTION IS TO BE POSITIONED ON THE UP-SLOPE SIDE OF THE DRAINAGE INLET. AT SAG LOCATIONS THE 1:1 SLOPED CONCRETE SECTION IS TO BE ON BOTH SIDES OF THE DRAINAGE INLET.
  2. DEPRESS GUTTER FLOWLINE FROM 3 5/8\"
  3. FLOOR OF THE DRAINAGE INLET SHALL BE PLACED PRIOR TO OR AT THE SAME TIME AS THE SIDE WALLS, OR TIED WITH REBAR.
  4. FRAME AND GRATE SHALL CONFORM TO THE FRAME AND GRATE DETAIL ON THE PLANS, D&L 1-3542, OR EQUAL.
  5. DRAINAGE INLET HOOD SHALL BE 1/2\"
  6. WALL REINFORCING (NOT SHOWN) SHALL BE #4 BARS @ 18\"
  7. A PRECAST UNIT WITH CAST-IN-PLACE TOP SECTION TO RECEIVE GRATE, FRAME AND HOOD WILL BE AN ACCEPTABLE ALTERNATIVE TO CAST-IN-PLACE UNITS. DRAINAGE INLETS THAT ARE ENTIRELY PRECAST ARE NOT ACCEPTABLE. CAST-IN-PLACE TOP SECTIONS SHALL BE DOWLED INTO THE CURB AND GUTTER WITH 3-#4 BARS, 18\"
  8. WHEN DIRECTED BY ENGINEER, DRAINAGE INLET IE SHALL EQUAL IE OF OUTLET PIPE. CONTRACTOR TO SLOPE DRAINAGE INLET FLOOR TO DRAIN AND OMIT HOLES.

**TYPE 2 DRAINAGE INLET**

1  
D-5



**DRAINAGE INLET FRAME, GRATE & HOOD**

2  
D-5

**REVISION**

NUMBER	DATE	DESCRIPTION	BY



PREPARED UNDER SUPERVISION OF:  
*Peter H. Hahn*  
REGISTERED CIVIL ENGINEER  
DATE: 4/15/2011

DESIGNED DES	CAD
CHECKED CHK	DATE: 03/2/2011
ROAD NUMBER: ###	



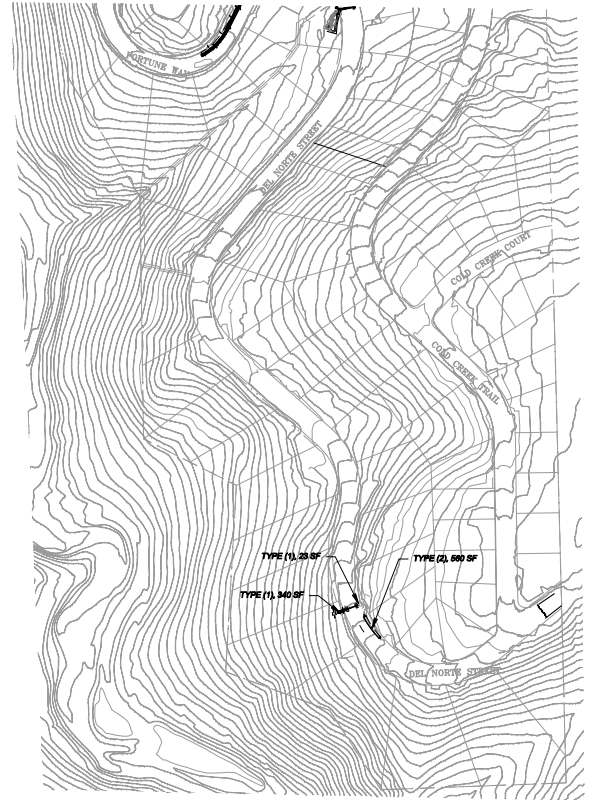
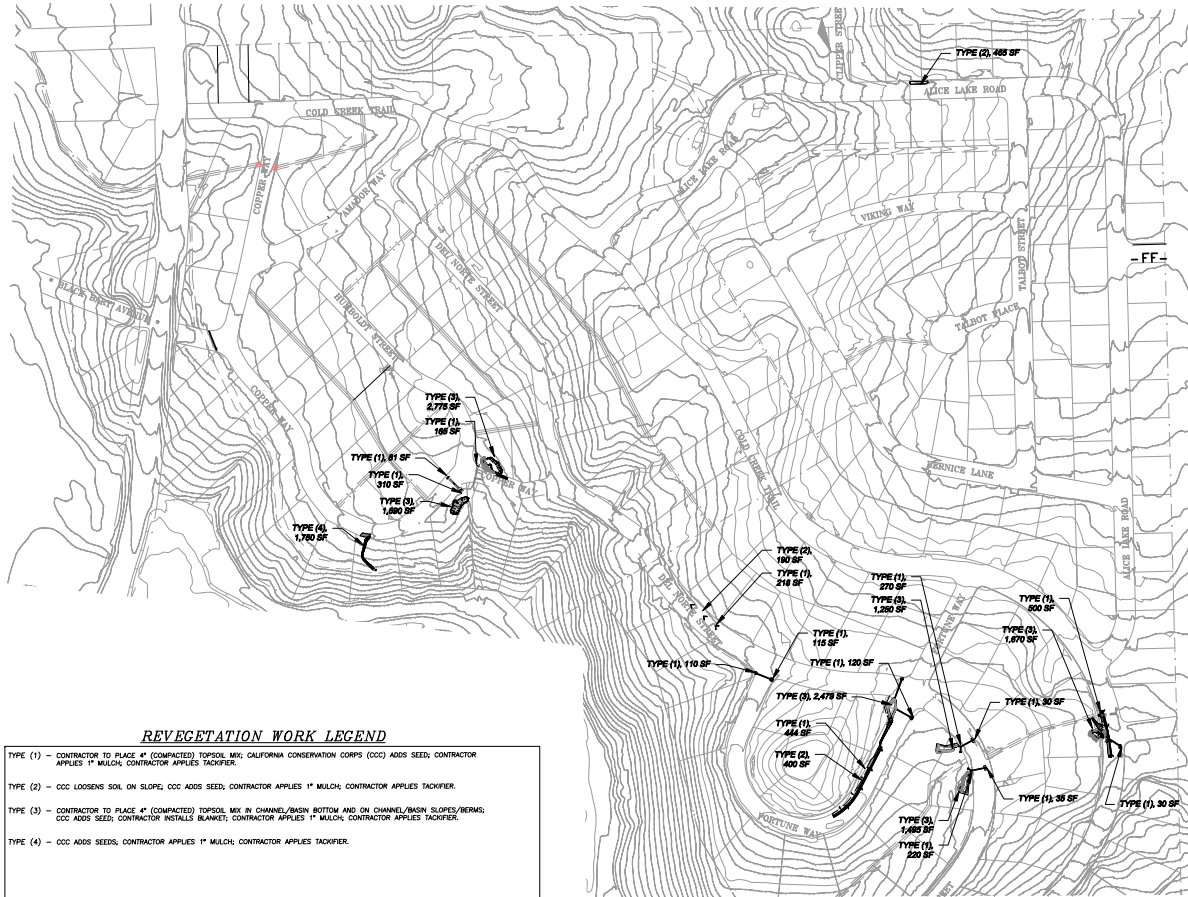
**EL DORADO COUNTY**  
DEPARTMENT OF TRANSPORTATION

MONTGOMERY ESTATES AREA 1A  
DETAILS

SHEET  
**D-5**  
18 of 26  
CONTRACT NO.  
PW 09-30485  
CIP NO.  
95155

11-0041.C.18

FOR REDUCED PLANS ORIGINAL SCALE IS IN INCHES

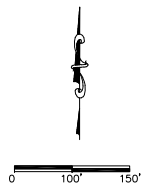
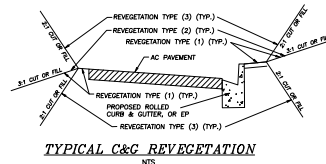


**REVEGETATION WORK LEGEND**

- TYPE (1) - CONTRACTOR TO PLACE 4" (COMPACTED) TOPSOIL MIX, CALIFORNIA CONSERVATION CORPS (CCC) ADDS SEED; CONTRACTOR APPLIES 1" MULCH; CONTRACTOR APPLIES TACKIFIER.
- TYPE (2) - CCC LOOSENS SOIL ON SLOPE, CCC ADDS SEED; CONTRACTOR APPLIES 1" MULCH, CONTRACTOR APPLIES TACKIFIER.
- TYPE (3) - CONTRACTOR TO PLACE 4" (COMPACTED) TOPSOIL MIX IN CHANNEL/BASIN BOTTOM AND ON CHANNEL/BASIN SLOPES/BERMS; CCC ADDS SEED; CONTRACTOR INSTALLS BLANKET; CONTRACTOR APPLIES 1" MULCH, CONTRACTOR APPLIES TACKIFIER.
- TYPE (4) - CCC ADDS SEEDS, CONTRACTOR APPLIES 1" MULCH; CONTRACTOR APPLIES TACKIFIER.

- NOTES: 1) REVEGETATION TYPE (1) APPROX. 2'-5" ADJACENT TO CURB AND GUTTER INSTALLATION, EP, AND FLAT AREAS.  
 2) REVEGETATION TYPE (2) FOR AREAS ASSOCIATED WITH CULVERT INSTALLATION AND ROCK-LINED CHANNELS AND ON SLOPES EQUAL TO OR FLATTER THAN 3:1.  
 3) REVEGETATION TYPE (3) FOR AREAS ASSOCIATED WITH CHANNEL AND BASIN CONSTRUCTION.  
 4) AMENDMENT & MULCH SHALL NOT BE APPLIED TO AREAS WITHIN BASIN BOTTOMS OR CHANNELS.  
 5) ALL REVEGETATION AREAS DESCRIBED ABOVE WILL BE IRRIGATED WITH A WATER TRUCK FOR TWO YEARS FOLLOWING INSTALLATION TO ENSURE OPTIMUM PLANT SURVIVAL. (BY EDDT)

LEGEND  
 ■■■■■■■■■■ REVEGETATION AREA



REVISION	NUMBER	DATE	DESCRIPTION	BY



PREPARED UNDER SUPERVISION OF:  
*[Signature]*  
 REGISTERED CIVIL ENGINEER  
 DATE: 4/5/2011

DESIGNED: DWK  
 DRAWN: JTC  
 CHECKED: DSP  
 DATE: 03/2011  
 ROAD NUMBER:

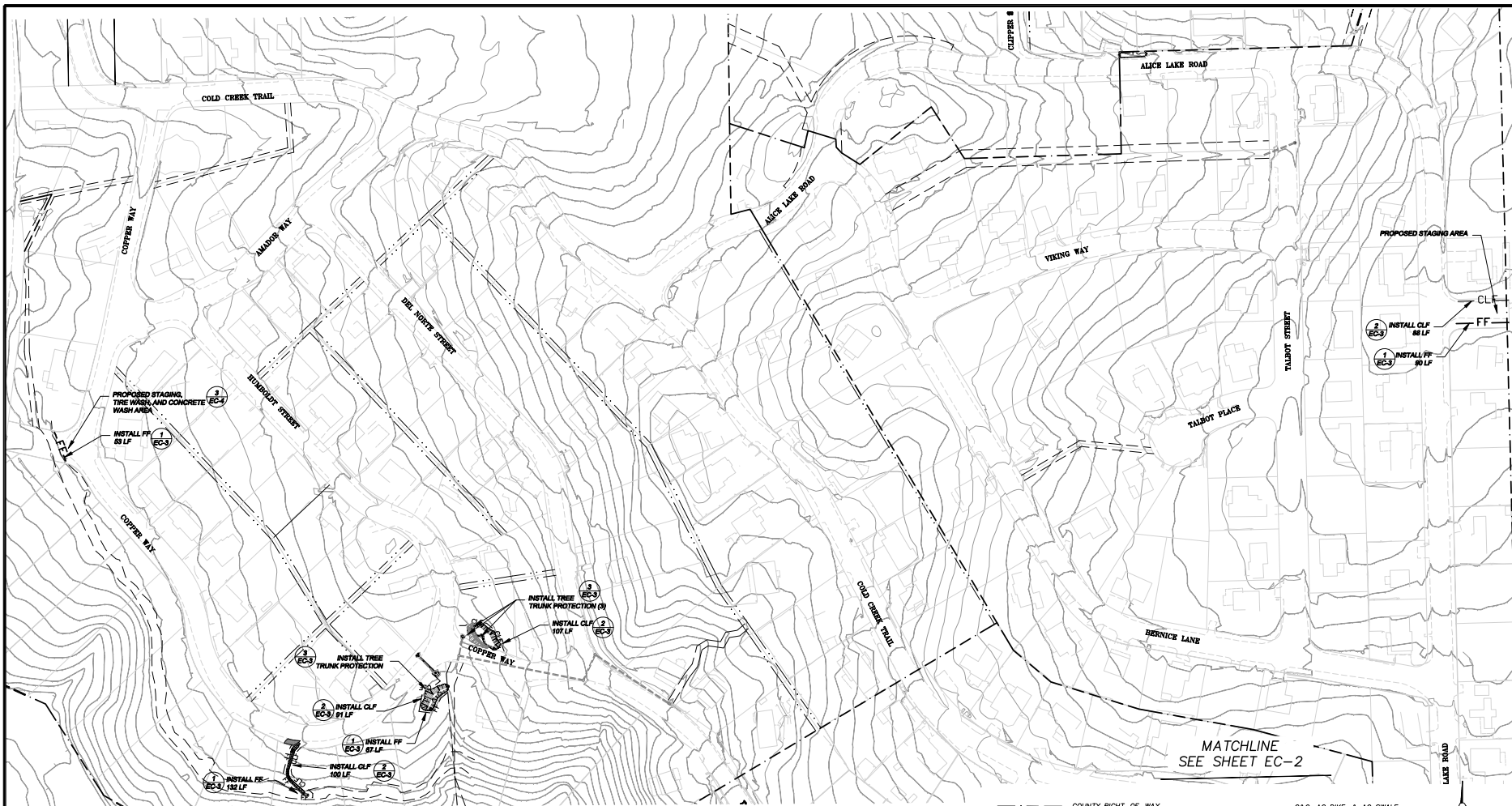


EL DORADO COUNTY  
 DEPARTMENT OF TRANSPORTATION

MONTGOMERY ESTATES AREA 1A  
 REVEGETATION

SHEET  
**R-1**  
 19 of 26  
 CONTRACT NO.  
 PW 09-30485  
 OF No. 95155

ORIGINAL SCALE IS IN INCHES  
 Drawing made using 3d project\2010\2010\mcs\11-0041.C.20.dwg  
 FOR REDUCED PLANS  
 2  
 1  
 0



- NOTES:
- WOODEN TREE TRUNK PROTECTION TO BE PER DETAIL AND/OR AS DETERMINED IN THE FIELD.
  - ALL AMOUNTS SHOWN IN BID SCHEDULE ARE ESTIMATES ONLY. CONTRACTOR SHALL MAKE ALL NECESSARY CHANGES TO THE TEMPORARY EROSION CONTROL PLAN WITH HIS/HER SUBMITTAL IN ORDER TO COMPLY WITH TRPA AND LAHONTAN SHPPP REQUIREMENTS.
  - CONTRACTOR WILL BE PAID FOR ACTUAL QUANTITIES OR TEMPORARY EROSION CONTROL DEVICES INSTALLED AND SATISFACTORILY MAINTAINED.
  - A FINE OF \$100/DAY WILL BE LEVIED AGAINST THE CONTRACTOR FOR EACH DAY CONTRACTOR DELAYS IN RESPONDING TO ENGINEER'S REQUEST TO INSTALL NEW TEMPORARY EROSION CONTROL DEVICES AND OR MAINTAIN EXISTING TEMPORARY EROSION CONTROL DEVICES.
  - TEMPORARY EROSION CONTROL DEVICES FOR DEWATERING LOCATIONS ARE NOT SHOWN. THE QUANTITIES AND PAYMENT FOR THE TEMPORARY EROSION CONTROL IN THESE AREAS ARE INCLUDED IN THE RESPECTIVE BID ITEMS FOR DEWATERING. CONTRACTOR SHALL INCLUDE IN CONTRACT BIDS DEWATERING AND DIVERSION PLANS THE LOCATION AND TYPES OF TEMPORARY EROSION CONTROL DEVICES THAT ARE PROPOSED FOR USE.

- COUNTY RIGHT-OF-WAY
  - - - EXISTING EDGE OF PAVEMENT
  - - - DRAINAGE OR SLOPE EASEMENT
  - - - ELECTRICAL/TELEPHONE EASEMENT
  - - - EXISTING HOUSE
  - - - EXISTING STORM DRAIN
  - - - CONSTRUCTION LIMIT OR TREE PROTECTION FENCE
  - - - FILTER FENCE
- > C&G, AC DIKE, & AC SWALE
  - > SEDIMENT CONTROL
  - PROPOSED SEDIMENT TRAP
  - PROPOSED DRAINAGE INLET
  - PROPOSED SDMH
  - PROPOSED PIPE WITH FES
  - PROPOSED CURB & GUTTER, AC SWALE OR AC DIKE
  - PROPOSED ROCK DISSIPATOR
  - PROPOSED GRADING

MATCHLINE  
SEE SHEET EC-2

REVISION	NUMBER	DATE	DESCRIPTION	BY



PREPARED BY: *[Signature]*  
 SUPERVISION OF: *[Signature]*  
 REGISTERED PROFESSIONAL ENGINEER  
 DATE: 4/5/2011

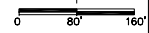
DESIGNED: DMK  
 DRAWN: JTC  
 CHECKED: DISP  
 DATE: 03/2011  
 ROAD NUMBER:



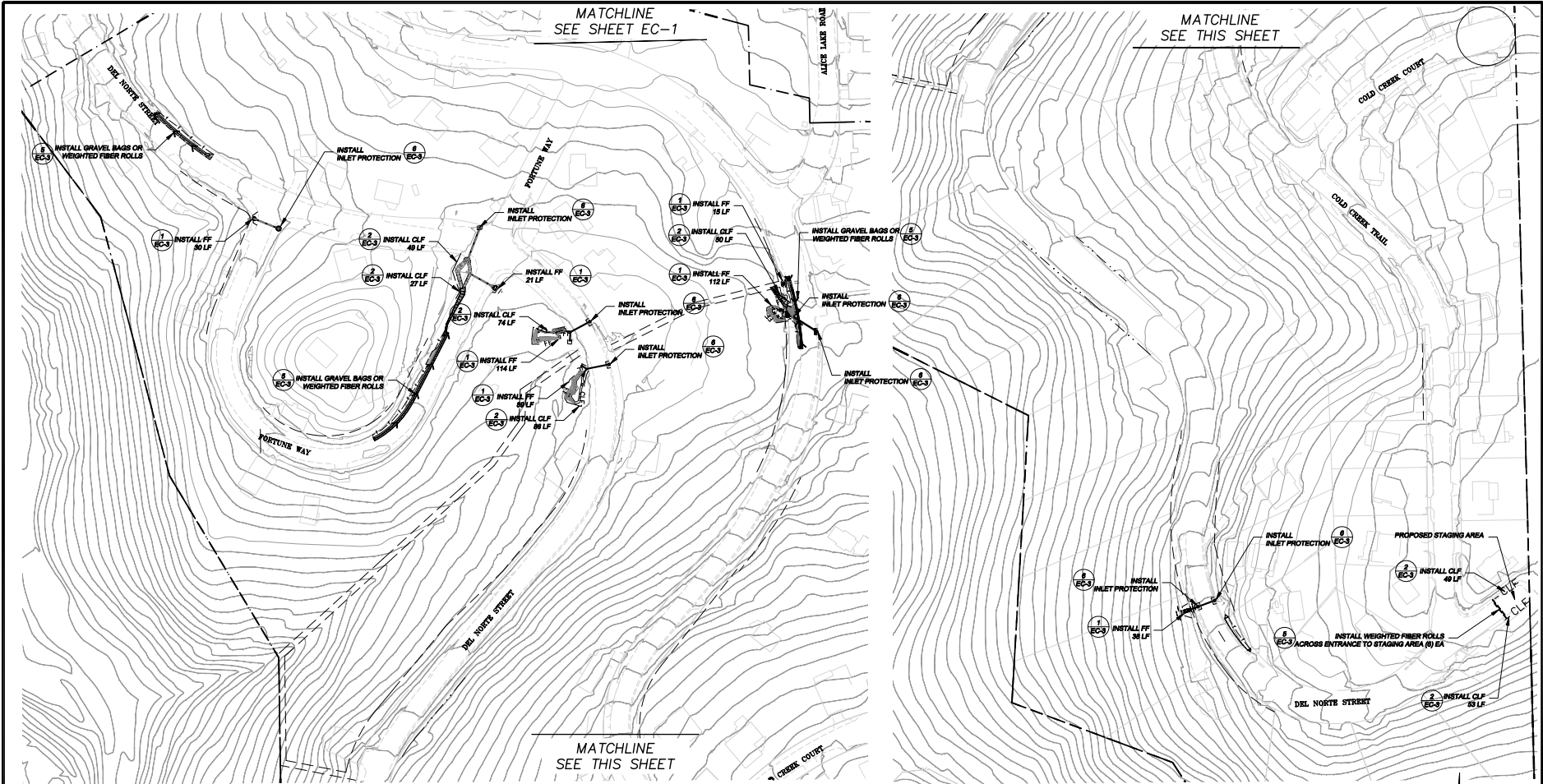
EL DORADO COUNTY  
 DEPARTMENT OF TRANSPORTATION

MONTGOMERY ESTATES AREA 1A  
 TEMPORARY EROSION CONTROL PLAN

SHEET  
 EC-1  
 20 of 26  
 CONTRACT NO.  
 PW 09-30485  
 OF NO.  
 95155



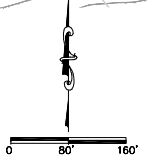
FOR REDUCED PLANS ORIGINAL SCALE IS IN INCHES 2 1 0



**NOTES:**

1. WOODEN TREE TRUNK PROTECTION TO BE PER DETAIL AND/OR AS DETERMINED IN THE FIELD.
2. ALL AMOUNTS SHOWN IN BID SCHEDULE ARE ESTIMATES ONLY. CONTRACTOR SHALL MAKE ALL NECESSARY CHANGES TO THE TEMPORARY EROSION CONTROL PLAN WITH HIS/HER SUBMITTAL IN ORDER TO COMPLY WITH TRPA AND LAHONTAN SWPPP REQUIREMENTS
3. CONTRACTOR WILL BE PAID FOR ACTUAL QUANTITIES OR TEMPORARY EROSION CONTROL DEVICES INSTALLED AND SATISFACTORILY MAINTAINED.
4. A FINE OF \$100/DAY WILL BE LEVIED AGAINST THE CONTRACTOR FOR EACH DAY CONTRACTOR DELAYS IN RESPONDING TO ENGINEER'S REQUEST TO INSTALL NEW TEMPORARY EROSION CONTROL DEVICES AND OR MAINTAIN EXISTING TEMPORARY EROSION CONTROL DEVICES.
5. TEMPORARY EROSION CONTROL DEVICES FOR DEWATERING LOCATIONS ARE NOT SHOWN. THE QUANTITIES AND PAYMENT FOR THE TEMPORARY EROSION CONTROL IN THESE AREAS ARE INCLUDED IN THE RESPECTIVE BID ITEMS FOR DEWATERING. CONTRACTOR SHALL INCLUDE IN CONTRACTOR'S DEWATERING AND DIVERSION PLANS THE LOCATION AND TYPES OF TEMPORARY EROSION CONTROL DEVICES THAT ARE PROPOSED FOR USE.

---	COUNTY RIGHT-OF-WAY	>	C&G, AC DIKE, & AC SWALE
---	EXISTING EDGE OF PAVEMENT	○	SEDIMENT CONTROL
---	DRAINAGE OR SLOPE EASEMENT	○	PROPOSED SEDIMENT TRAP
---	ELECTRICAL/TELEPHONE EASEMENT	○	PROPOSED DRAINAGE INLET
---	EXISTING HOUSE	○	PROPOSED SDMP
---	EXISTING STORM DRAIN	○	PROPOSED PIPE WITH FES
---	CONSTRUCTION LIMIT OR TREE PROTECTION FENCE	○	PROPOSED CURB & GUTTER, AC SWALE OR AC DIKE
---	FILTER FENCE	○	PROPOSED ROCK DISSIPATOR
---		○	PROPOSED GRADING



REVISION	NUMBER	DATE	DESCRIPTION	BY



PREPARED UNDER SUPERVISION OF:  
*[Signature]*  
 REGISTERED PROFESSIONAL ENGINEER  
 DATE: 4/5/2011

DESIGNED: DWK JTC  
 DRAWN: JTC  
 CHECKED: DSP DATE: 03/2011  
 ROAD NUMBER:

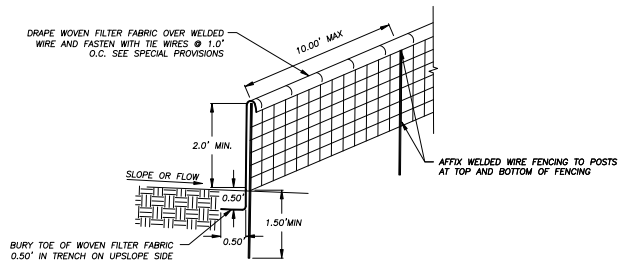


EL DORADO COUNTY  
 DEPARTMENT OF TRANSPORTATION

MONTGOMERY ESTATES AREA 1A  
 TEMPORARY EROSION CONTROL PLAN

SHEET  
 EC-2  
 21 of 26  
 CONTRACT NO.  
 PW 09-30485  
 OF NO.  
 95155

ORIGINAL SCALE IS IN INCHES  
 DRAWING NUMBER: 11-0041.C.22  
 PROJECT: 09-30485  
 SHEET: EC-3 OF 26  
 DATE: 05/2011

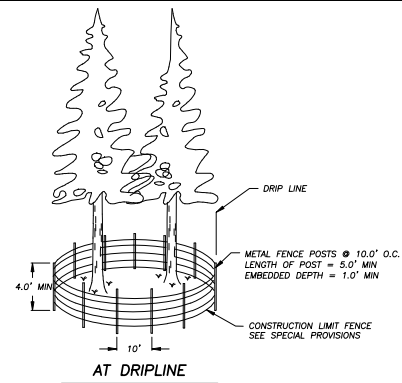


NOTES: 1. CONTRACTOR MAY USE PRE MANUFACTURED SEDIMENT CONTROL FENCE AS APPROVED BY THE ENGINEER, SEE SPECIAL PROVISIONS.  
 2. PLACE FENCING SUCH THAT STORM RUNOFF CANNOT PASS AROUND OR UNDER FENCE.

**FILTER FENCE (FF)**

NTS

1  
EC-3

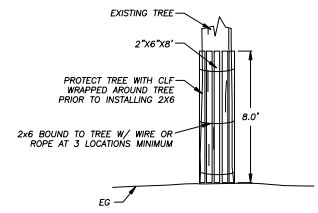


NOTE: DETAIL ABOVE IS TYPICAL FOR SOME DRIPLINE LOCATIONS, CONSTRUCTION LIMIT FENCE SHALL BE STAKED IN THE FIELD BY ENGINEER.

**CONSTRUCTION LIMIT FENCE (CLF)**

NTS

2  
EC-3

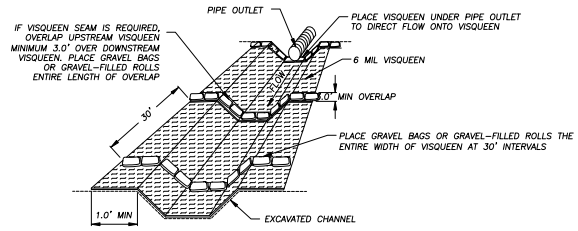


NOTE: DETAIL ABOVE SHALL BE INSTALLED FOR TREE PROTECTION AT LOCATIONS WHERE CONSTRUCTION LIMIT FENCE INTERFERES WITH CONSTRUCTION ACTIVITIES.

**WOODEN TREE TRUNK PROTECTION**

NTS

3  
EC-3

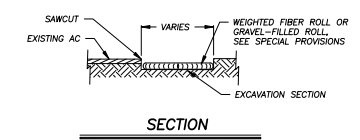
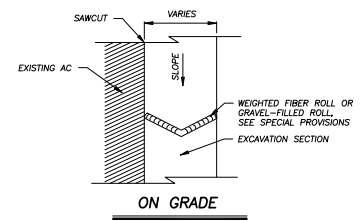


**VISQUEEN WITH GRAVEL BAGS OR GRAVEL-FILLED ROLLS**

NTS

4  
EC-3

GENERAL NOTES:  
 1. SEE SPECIAL PROVISIONS FOR SPECIFICATIONS REGARDING FILTER FABRIC, GRAVEL BAGS, GRAVEL-FILLED ROLLS, RICE STRAW FIBER ROLLS, AND FENCE POSTS.  
 2. DIMENSION LIMITS OF FILTER FENCE AND CONSTRUCTION LIMIT FENCE DOES NOT INCLUDE MINIMUM LIMITS FOR TREE PROTECTION. TREE PROTECTION FENCING TO BE PER DETAIL THIS SHEET AND/OR AS STAKED IN THE FIELD.

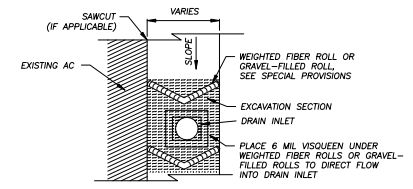


NOTE: SPACING INTERVALS FOR WEIGHTED FIBER ROLL OR GRAVEL FILLED ROLL TEMPORARY SEDIMENT CONTROL ON GRADE SHALL BE AT 50' OC FOR SLOPES GREATER THAN 5% AND AT 100' OC FOR SLOPES LESS THAN OR EQUAL TO 5%.

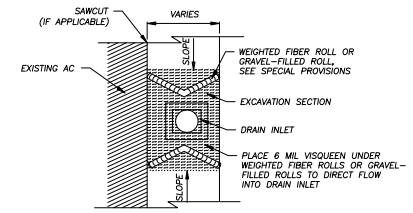
**WEIGHTED FIBER ROLLS OR GRAVEL-FILLED ROLLS**

NTS

5  
EC-3



**DRAIN INLET ON GRADE**



**DRAIN INLET @SAG**

**DRAIN INLET PROTECTION**

NTS

6  
EC-3

REVISION	NUMBER	DATE	DESCRIPTION	BY



PREPARED UNDER SUPERVISION OF:  
 REGISTERED CIVIL ENGINEER  
 DATE: 4/5/2011

DESIGNED: DWK  
 DRAWN: JTC  
 CHECKED: DSP  
 DATE: 03/2011  
 ROAD NUMBER:

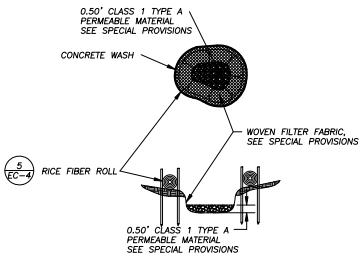


**EL DORADO COUNTY**  
 DEPARTMENT OF TRANSPORTATION

MONTGOMERY ESTATES AREA 1A  
 TEMPORARY EROSION CONTROL DETAILS

SHEET  
**EC-3**  
 22 of 26  
 CONTRACT NO.  
**PW 09-30485**  
 OF NO.  
 95155

ORIGINAL SCALE IS IN INCHES  
 2  
 1  
 0  
 FOR REDUCED PLANS  
 REVISION  
 NUMBER DATE DESCRIPTION BY

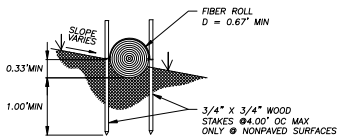
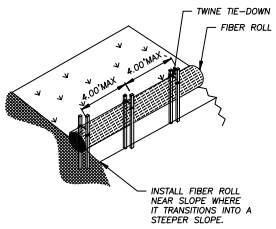


NOTE: CONCRETE WASH SHALL BE SIZED FOR WASHING ALL CONCRETE EQUIPMENT W/D OVER TOPPING BASIN.

**CONCRETE WASH AREA**

NTS

1  
EC-4

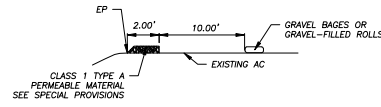
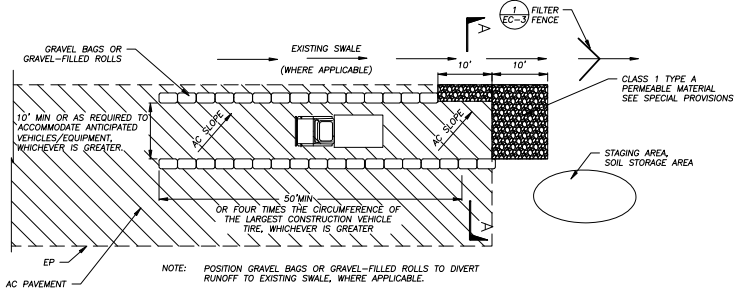


NOTE: INSTALL FIBER ROLL ALONG LEVEL CONTOUR.

**RICE STRAW FIBER ROLLS**

NTS

2  
EC-4



**SECTION A-A**

**TIRE WASH AREA (ON PAVEMENT)**

NTS

3  
EC-4



PREPARED UNDER SUPERVISION OF:  
*Peter Romano*  
 REGISTERED CIVIL ENGINEER  
 DATE: 4/5/2011

DESIGNED: DWK  
 DRAWN: JTC  
 CHECKED: DSP  
 DATE: 03/2011  
 ROAD NUMBER:

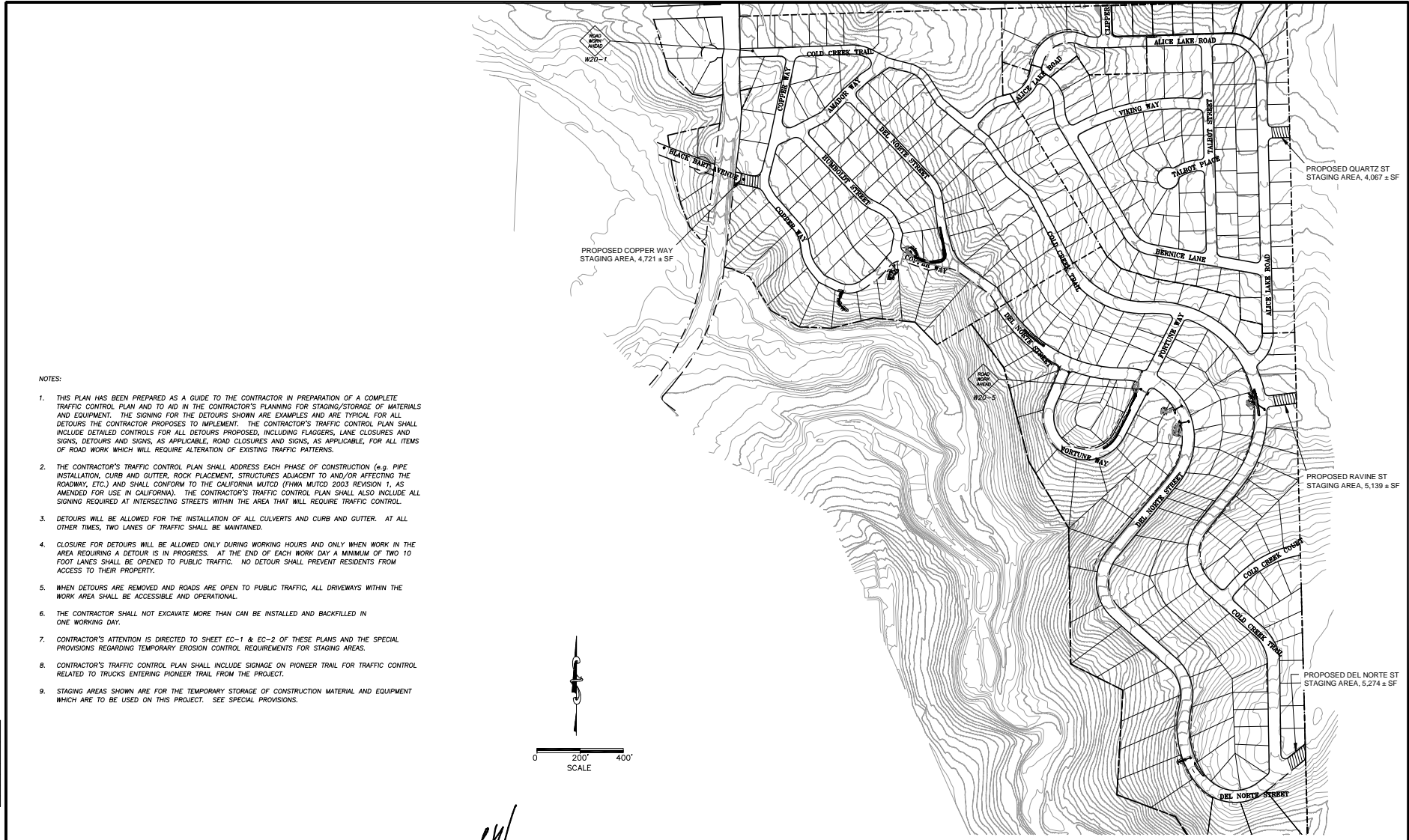


EL DORADO COUNTY  
 DEPARTMENT OF TRANSPORTATION

MONTGOMERY ESTATES AREA 1A  
 TEMPORARY EROSION CONTROL DETAILS

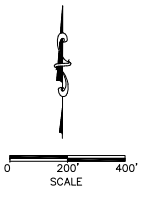
SHEET  
**EC-4**  
 23 of 26  
 CONTRACT NO.  
 PW 09-30485  
 OF NO.  
 95155

FOR REDUCED PLANS ORIGINAL SCALE IS IN INCHES 2 1 0



**NOTES:**

1. THIS PLAN HAS BEEN PREPARED AS A GUIDE TO THE CONTRACTOR IN PREPARATION OF A COMPLETE TRAFFIC CONTROL PLAN AND TO AID IN THE CONTRACTOR'S PLANNING FOR STAGING/STORAGE OF MATERIALS AND EQUIPMENT. THE SIGNING FOR THE DETOURS SHOWN ARE EXAMPLES AND ARE TYPICAL FOR ALL DETOURS THE CONTRACTOR PROPOSES TO IMPLEMENT. THE CONTRACTOR'S TRAFFIC CONTROL PLAN SHALL INCLUDE DETAILED CONTROLS FOR ALL DETOURS PROPOSED, INCLUDING FLAGGERS, LANE CLOSURES AND SIGNS, DETOURS AND SIGNS, AS APPLICABLE, ROAD CLOSURES AND SIGNS, AS APPLICABLE, FOR ALL ITEMS OF ROAD WORK WHICH WILL REQUIRE ALTERATION OF EXISTING TRAFFIC PATTERNS.
2. THE CONTRACTOR'S TRAFFIC CONTROL PLAN SHALL ADDRESS EACH PHASE OF CONSTRUCTION (e.g. PIPE INSTALLATION, CURB AND GUTTER, ROCK PLACEMENT, STRUCTURES ADJACENT TO AND/OR AFFECTING THE ROADWAY, ETC.) AND SHALL CONFORM TO THE CALIFORNIA MUTCD (FHWA MUTCD 2003 REVISION 1, AS AMENDED FOR USE IN CALIFORNIA). THE CONTRACTOR'S TRAFFIC CONTROL PLAN SHALL ALSO INCLUDE ALL SIGNING REQUIRED AT INTERSECTING STREETS WITHIN THE AREA THAT WILL REQUIRE TRAFFIC CONTROL.
3. DETOURS WILL BE ALLOWED FOR THE INSTALLATION OF ALL CULVERTS AND CURB AND GUTTER. AT ALL OTHER TIMES, TWO LANES OF TRAFFIC SHALL BE MAINTAINED.
4. CLOSURE FOR DETOURS WILL BE ALLOWED ONLY DURING WORKING HOURS AND ONLY WHEN WORK IN THE AREA REQUIRING A DETOUR IS IN PROGRESS. AT THE END OF EACH WORK DAY A MINIMUM OF TWO TO FOOT LANES SHALL BE OPENED TO PUBLIC TRAFFIC. NO DETOUR SHALL PREVENT RESIDENTS FROM ACCESS TO THEIR PROPERTY.
5. WHEN DETOURS ARE REMOVED AND ROADS ARE OPEN TO PUBLIC TRAFFIC, ALL DRIVEWAYS WITHIN THE WORK AREA SHALL BE ACCESSIBLE AND OPERATIONAL.
6. THE CONTRACTOR SHALL NOT EXCAVATE MORE THAN CAN BE INSTALLED AND BACKFILLED IN ONE WORKING DAY.
7. CONTRACTOR'S ATTENTION IS DIRECTED TO SHEET EC-1 & EC-2 OF THESE PLANS AND THE SPECIAL PROVISIONS REGARDING TEMPORARY EROSION CONTROL REQUIREMENTS FOR STAGING AREAS.
8. CONTRACTOR'S TRAFFIC CONTROL PLAN SHALL INCLUDE SIGNAGE ON PIONEER TRAIL FOR TRAFFIC CONTROL RELATED TO TRUCKS ENTERING PIONEER TRAIL FROM THE PROJECT.
9. STAGING AREAS SHOWN ARE FOR THE TEMPORARY STORAGE OF CONSTRUCTION MATERIAL AND EQUIPMENT WHICH ARE TO BE USED ON THIS PROJECT. SEE SPECIAL PROVISIONS.



REVISION	NUMBER	DATE	DESCRIPTION	BY



PREPARED UNDER SUPERVISION OF:  
*[Signature]*  
 REGISTERED CIVIL ENGINEER  
 DATE: 4/5/2011

DESIGNED: DWK  
 DRAWN: JTC  
 CHECKED: DSP  
 DATE: 03/2/2011  
 ROAD NUMBER:



EL DORADO COUNTY  
 DEPARTMENT OF TRANSPORTATION

MONTGOMERY ESTATES AREA 1A  
 TRAFFIC CONTROL

SHEET  
 T-1  
 24 of 26  
 CONTRACT NO.  
 PW 09-30485  
 OF NO.  
 95155

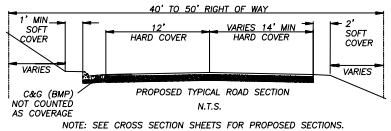


FOR REDUCED PLANS ORIGINAL SCALE IS IN INCHES Drawing sheet 25 of 26 project 11-0041.C.25 11-0041.C.25

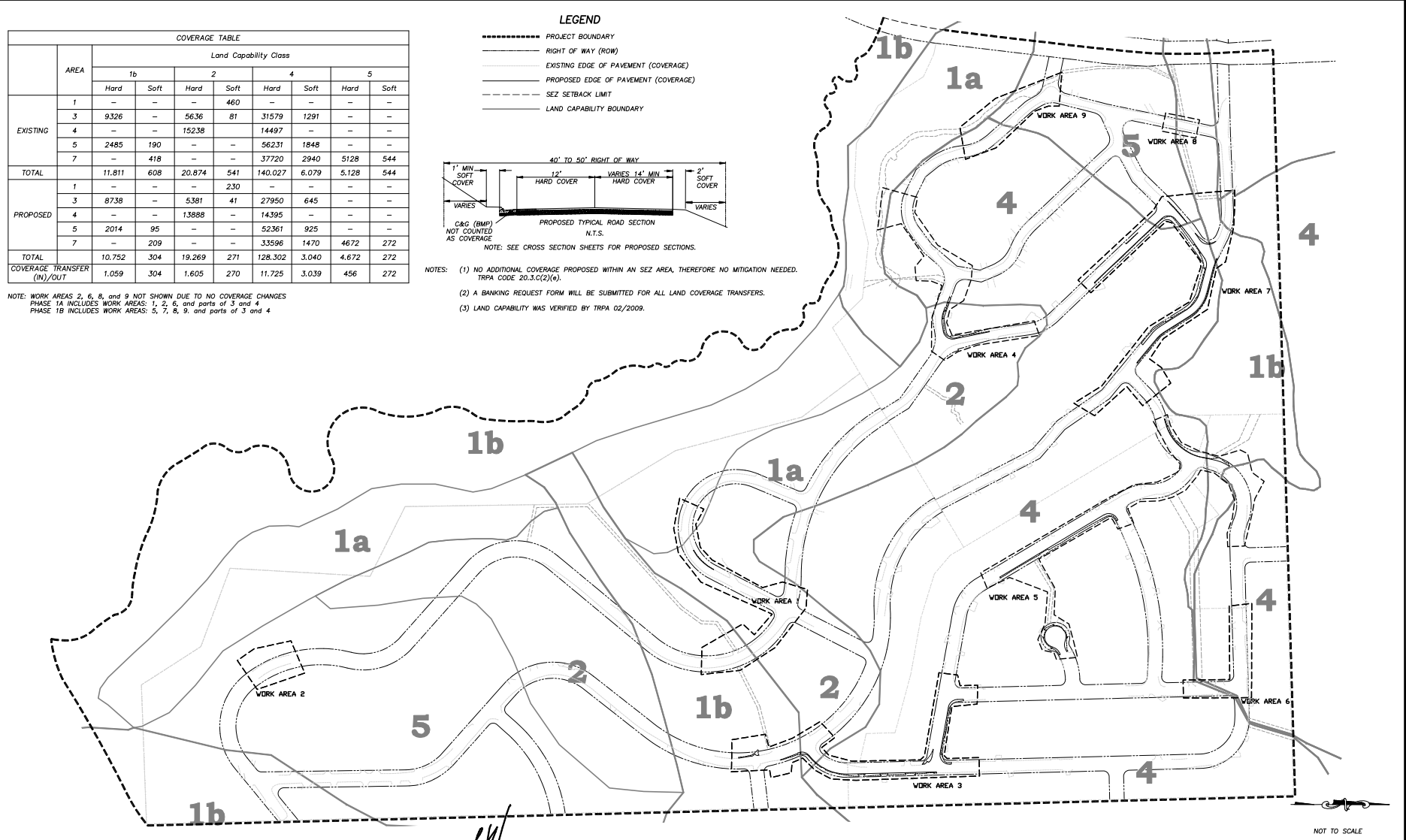
COVERAGE TABLE									
AREA	Land Capability Class								
	1b		2		4		5		
	Hard	Soft	Hard	Soft	Hard	Soft	Hard	Soft	
EXISTING	1	--	--	--	460	--	--	--	--
	3	9326	--	5636	81	31579	1291	--	--
	4	--	--	15238	--	14497	--	--	--
	5	2485	190	--	--	56231	1848	--	--
	7	--	418	--	--	37720	2940	5128	544
	TOTAL	11,811	608	20,874	541	140,027	6,079	5,128	544
	PROPOSED	1	--	--	230	--	--	--	--
3	8738	--	5381	41	27950	645	--	--	
4	--	--	13888	--	14395	--	--	--	
5	2014	95	--	--	52361	925	--	--	
7	--	209	--	--	33596	1470	4672	272	
TOTAL	10,752	304	19,269	271	128,302	3,040	4,672	272	
COVERAGE TRANSFER (N)/OUT	1,059	304	1,605	270	11,725	3,039	456	272	

NOTE: WORK AREAS 2, 6, 8, and 9 NOT SHOWN DUE TO NO COVERAGE CHANGES  
 PHASE 1A INCLUDES WORK AREAS: 1, 2, 6, and parts of 3 and 4  
 PHASE 1B INCLUDES WORK AREAS: 5, 7, 8, 9, and parts of 3 and 4

- LEGEND**
- PROJECT BOUNDARY
  - RIGHT OF WAY (ROW)
  - EXISTING EDGE OF PAVEMENT (COVERAGE)
  - PROPOSED EDGE OF PAVEMENT (COVERAGE)
  - SEZ SETBACK LIMIT
  - LAND CAPABILITY BOUNDARY



- NOTES: (1) NO ADDITIONAL COVERAGE PROPOSED WITHIN AN SEZ AREA, THEREFORE NO MITIGATION NEEDED. TRPA CODE 20.3.C(2)(e).  
 (2) A BANKING REQUEST FORM WILL BE SUBMITTED FOR ALL LAND COVERAGE TRANSFERS.  
 (3) LAND CAPABILITY WAS VERIFIED BY TRPA 02/2009.



REVISION	NUMBER	DATE	DESCRIPTION	BY



PREPARED UNDER SUPERVISION OF:  
*[Signature]*  
 REGISTERED CIVIL ENGINEER  
 DATE: 4/5/2011



DESIGNED: DWK  
 DRAWN: JTC  
 CHECKED: DSP  
 DATE: 01/2011  
 ROAD NUMBER:

EL DORADO COUNTY  
 DEPARTMENT OF TRANSPORTATION

MONTGOMERY ESTATES AREA 1A  
 EXISTING AND PROPOSED LAND COVERAGE

SHEET  
 L-1  
 25 of 26  
 CONTRACT NO.  
 CIP No. 95155

FOR REDUCED PLANS ORIGINAL SCALE IS IN INCHES 2 1 0

**SECTION LOG**

Project Name: Montgomery Estates Area 1A  
 Location: Montgomery Estates Area 1A  
 Reference: DOT 11-0041.C.26  
 Date: 03/2011  
 Stationing: 1+00 to 1+100

Depth (ft): 0, 10, 20, 30, 40, 50, 60, 70, 80, 90, 100

Soil Description:  
 0-10: Light gray silty clay with sand  
 10-20: Light gray silty clay with sand  
 20-30: Light gray silty clay with sand  
 30-40: Light gray silty clay with sand  
 40-50: Light gray silty clay with sand  
 50-60: Light gray silty clay with sand  
 60-70: Light gray silty clay with sand  
 70-80: Light gray silty clay with sand  
 80-90: Light gray silty clay with sand  
 90-100: Light gray silty clay with sand

**SECTION LOG**

Project Name: Montgomery Estates Area 1A  
 Location: Montgomery Estates Area 1A  
 Reference: DOT 11-0041.C.26  
 Date: 03/2011  
 Stationing: 1+100 to 1+200

Depth (ft): 0, 10, 20, 30, 40, 50, 60, 70, 80, 90, 100

Soil Description:  
 0-10: Light gray silty clay with sand  
 10-20: Light gray silty clay with sand  
 20-30: Light gray silty clay with sand  
 30-40: Light gray silty clay with sand  
 40-50: Light gray silty clay with sand  
 50-60: Light gray silty clay with sand  
 60-70: Light gray silty clay with sand  
 70-80: Light gray silty clay with sand  
 80-90: Light gray silty clay with sand  
 90-100: Light gray silty clay with sand

**SECTION LOG**

Project Name: Montgomery Estates Area 1A  
 Location: Montgomery Estates Area 1A  
 Reference: DOT 11-0041.C.26  
 Date: 03/2011  
 Stationing: 1+200 to 1+300

Depth (ft): 0, 10, 20, 30, 40, 50, 60, 70, 80, 90, 100

Soil Description:  
 0-10: Light gray silty clay with sand  
 10-20: Light gray silty clay with sand  
 20-30: Light gray silty clay with sand  
 30-40: Light gray silty clay with sand  
 40-50: Light gray silty clay with sand  
 50-60: Light gray silty clay with sand  
 60-70: Light gray silty clay with sand  
 70-80: Light gray silty clay with sand  
 80-90: Light gray silty clay with sand  
 90-100: Light gray silty clay with sand

**SECTION LOG**

Project Name: Montgomery Estates Area 1A  
 Location: Montgomery Estates Area 1A  
 Reference: DOT 11-0041.C.26  
 Date: 03/2011  
 Stationing: 1+300 to 1+400

Depth (ft): 0, 10, 20, 30, 40, 50, 60, 70, 80, 90, 100

Soil Description:  
 0-10: Light gray silty clay with sand  
 10-20: Light gray silty clay with sand  
 20-30: Light gray silty clay with sand  
 30-40: Light gray silty clay with sand  
 40-50: Light gray silty clay with sand  
 50-60: Light gray silty clay with sand  
 60-70: Light gray silty clay with sand  
 70-80: Light gray silty clay with sand  
 80-90: Light gray silty clay with sand  
 90-100: Light gray silty clay with sand

**SECTION LOG**

Project Name: Montgomery Estates Area 1A  
 Location: Montgomery Estates Area 1A  
 Reference: DOT 11-0041.C.26  
 Date: 03/2011  
 Stationing: 1+400 to 1+500

Depth (ft): 0, 10, 20, 30, 40, 50, 60, 70, 80, 90, 100

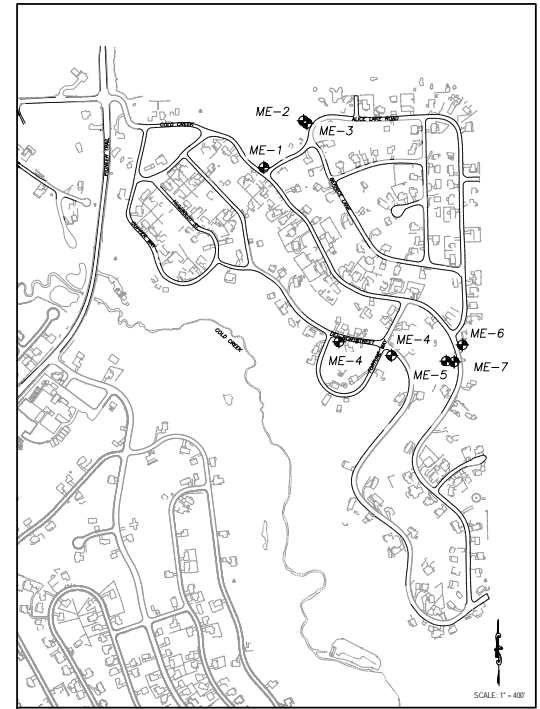
Soil Description:  
 0-10: Light gray silty clay with sand  
 10-20: Light gray silty clay with sand  
 20-30: Light gray silty clay with sand  
 30-40: Light gray silty clay with sand  
 40-50: Light gray silty clay with sand  
 50-60: Light gray silty clay with sand  
 60-70: Light gray silty clay with sand  
 70-80: Light gray silty clay with sand  
 80-90: Light gray silty clay with sand  
 90-100: Light gray silty clay with sand

**SECTION LOG**

Project Name: Montgomery Estates Area 1A  
 Location: Montgomery Estates Area 1A  
 Reference: DOT 11-0041.C.26  
 Date: 03/2011  
 Stationing: 1+500 to 1+600

Depth (ft): 0, 10, 20, 30, 40, 50, 60, 70, 80, 90, 100

Soil Description:  
 0-10: Light gray silty clay with sand  
 10-20: Light gray silty clay with sand  
 20-30: Light gray silty clay with sand  
 30-40: Light gray silty clay with sand  
 40-50: Light gray silty clay with sand  
 50-60: Light gray silty clay with sand  
 60-70: Light gray silty clay with sand  
 70-80: Light gray silty clay with sand  
 80-90: Light gray silty clay with sand  
 90-100: Light gray silty clay with sand



**LEGEND**

● PAVEMENT CORING LOCATION (TYPICAL)

⊕ SOIL CHARACTERISTICS LOCATION

REVISION	NUMBER	DATE	DESCRIPTION	BY



PREPARED UNDER SUPERVISION OF:  
*Peter Kohn*  
 REGISTERED CIVIL ENGINEER  
 DATE: 4/5/2011

DESIGNED: DWK  
 DRAWN: JTC  
 CHECKED: DSP  
 DATE: 03/2011  
 ROAD NUMBER:



EL DORADO COUNTY  
 DEPARTMENT OF TRANSPORTATION

MONTGOMERY ESTATES AREA 1A  
 GEOPHYSICAL CONDITIONS

SHEET  
 G-1  
 26 of 26  
 CONTRACT NO.  
 PW 09-30485  
 OF No. 95155