

**South Lake Tahoe Highway Improvement Project
EL-DORADO COUNTY RW DEDICATION REQUEST**

6/15/2007
EA 03-43601

PREPARED BY: Tarek Tabshouri, PE (Caltrans Design)
PRELIMINARY COST ESTIMATE PREPARED BY: Robert Rosas (Caltrans Right of Way)

Parcel Reference No. (see attached plans)	Parcel Size		Location	Easement Type	Post-Construction Status	Purpose	Preliminary RW Cost Estimate
	Ac	Sq. Ft.					
1	0.181	7866	Chamber of Commerce frontage	Non-motorized Easement	Turn over to City of SLT	Sidewalk, Landscaping, pedestrian lighting	\$235,980
2	1.404	61141	Campground between bike trail and Highway (across Harrison Blvd)	Drainage Easement	Maintained by Caltrans	Infiltration Basins	\$917,115
3	0.267	11629	Campground between bike trail and Highway (East of Camp store)	Drainage Easement	Maintained by Caltrans	Infiltration Basins	\$174,435
4	-	-	Campground Bike Trail	Maintenance Access Easement	Access rights after construction	Access for maintenance	\$0
5	0.253	11041	Sidewalk at campground	Non-motorized Easement	Turn over to City of SLT	Sidewalk, Landscaping, pedestrian lighting	\$331,230
6	0.068	2987	El Dorado Center frontage	Non-motorized Easement	Turn over to City of SLT	Sidewalk, Landscaping, pedestrian lighting	\$89,610
Total:							\$1,748,370

Lighting

Pedestrian Lighting is proposed by City of South Lake Tahoe as part of this project. Pedestrian lights will be placed at approximately 100' intervals. Lights to be placed on Non-motorized easements above and on County Right of Way on lakeside under an encroachment permit. See detail provided for height and shape of lighting element.

Tree Impacts

Pending TRPA approval, approximately 54 trees will be removed as part of the drainage basin layout proposed on the 6-15-07 plans provided by Caltrans. There are 446 trees in the Campground between Highway 50 and the campground bike trail. Final tree impact count is pending final design.

Infiltration Basin Storage

Approximate Volume of Available Storage based on 6-15-07 plans provided by Caltrans 36000 cu. Ft

Approximate Volume required by Caltrans 21500 cu. Ft

Approximate Volume available for other agencies 14500 cu. Ft

Additional development by City or County at campstore, parking area and connecting to Caltrans basins can potentially add additional 20,000 cu. Ft in available volume depending on future design

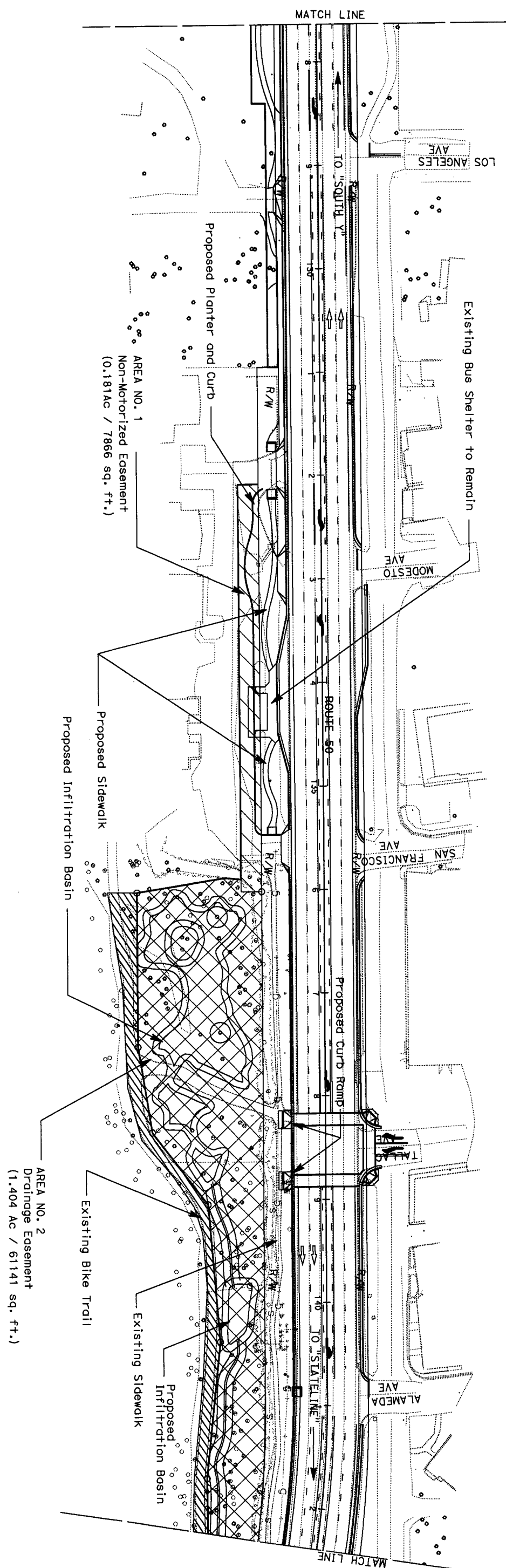
All calculations are preliminary and subject to change as design is finalized

SOUTH LAKE TAHOE HIGHWAY IMPROVEMENT PROJECT

EL DORADO COUNTY EASEMENT REQUIREMENTS

6-15-07

- R/W = Existing Right of Way
- = Non-Motorized Easement
- = Drainage Easement
- = Maintenance Access Easement



DIST	COUNTY	ROUTE	POST MILES	TOTAL	SHEET	TOTAL
03	ED	50			1	
			TOTAL PROJECT		TOTAL SHEETS	

REGISTERED CIVIL ENGINEER

PLANS APPROVAL DATE

The State of California or its officers or agents shall not be responsible for the accuracy or completeness or electronic copies of this plan sheet.

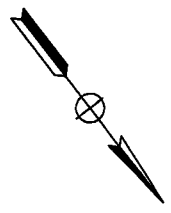
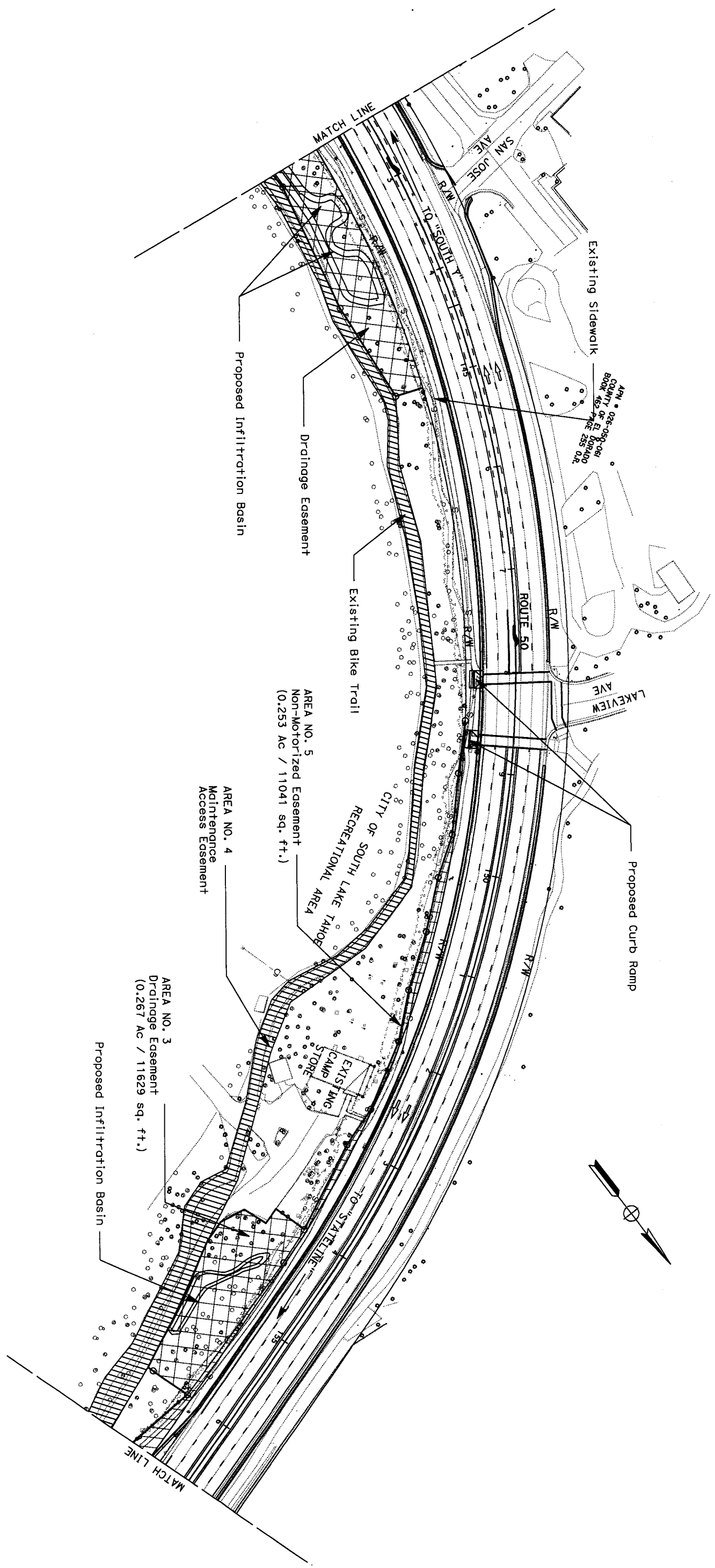
To get to the Caltrans web site, go to: <http://www.dot.ca.gov>

REGISTERED PROFESSIONAL ENGINEER
 STATE OF CALIFORNIA
 No. _____
 Exp. _____

SCALE 1"=100' 1-4

STATE OF CALIFORNIA - DEPARTMENT OF TRANSPORTATION Caltrans	NORTH REGION PROGRAM/PROJECT MANAGEMENT DESIGN BRANCH TT3	PROJECT ENGINEER	CALCULATED/ DESIGNED BY	DATE	REVISED BY		
		TAREK TABSHOURI	CHECKED BY		DATE REVISED		

SOUTH LAKE TAHOE HIGHWAY IMPROVEMENT PROJECT
EL DORADO COUNTY EASEMENT REQUIREMENTS
6-15-07



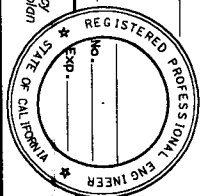
DIST	COUNTY	ROUTE	POST MILES TOTAL PROJECT	SHEET TOTAL NO. SHEETS
03	ED	50		

REGISTERED CIVIL ENGINEER

PLANS APPROVAL DATE

The State of California or its officers or agents shall not be responsible for the accuracy or completeness of electronic copies of this plan sheet.

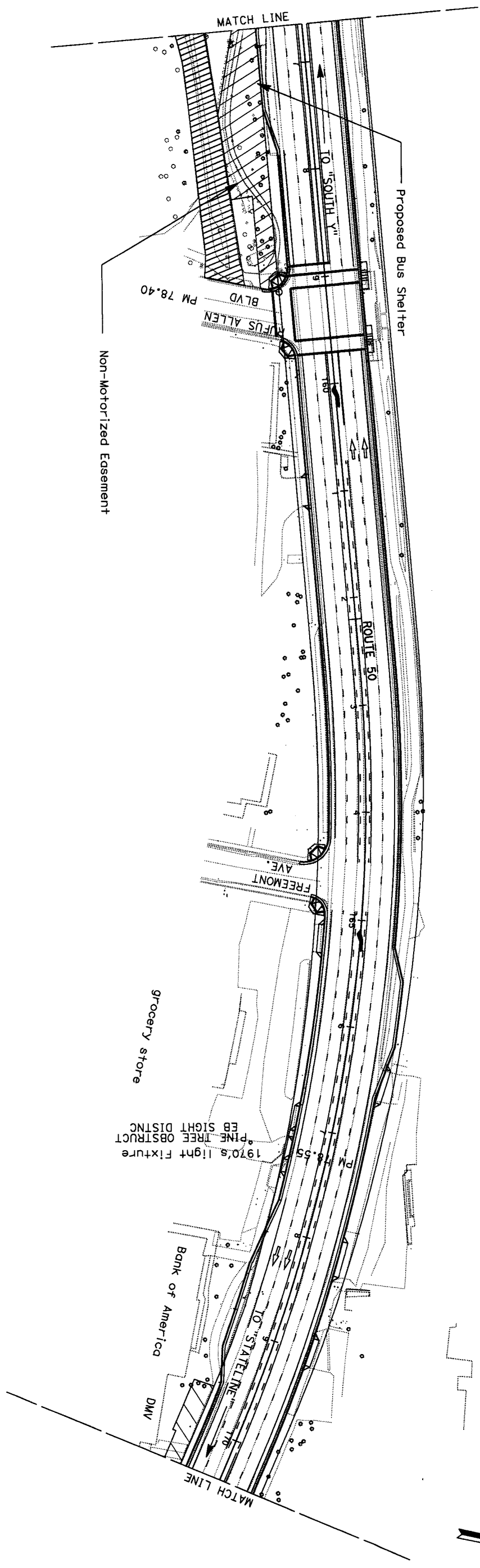
To get to the Caltrans web site, go to: <http://www.dot.ca.gov>



SCALE 1"=100' 2-4

DRAWN BY: [unreadable] CHECKED BY: [unreadable] DATE PLOTTED: 6-15-07

SOUTH LAKE TAHOE HIGHWAY IMPROVEMENT PROJECT
EL DORADO COUNTY EASEMENT REQUIREMENTS
6-15-07



DIST	COUNTY	ROUTE	POST MILES TOTAL PROJECT	SHEET NO.	TOTAL SHEETS
03	ED	50			

REGISTERED CIVIL ENGINEER

PLANS APPROVAL DATE

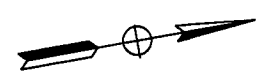
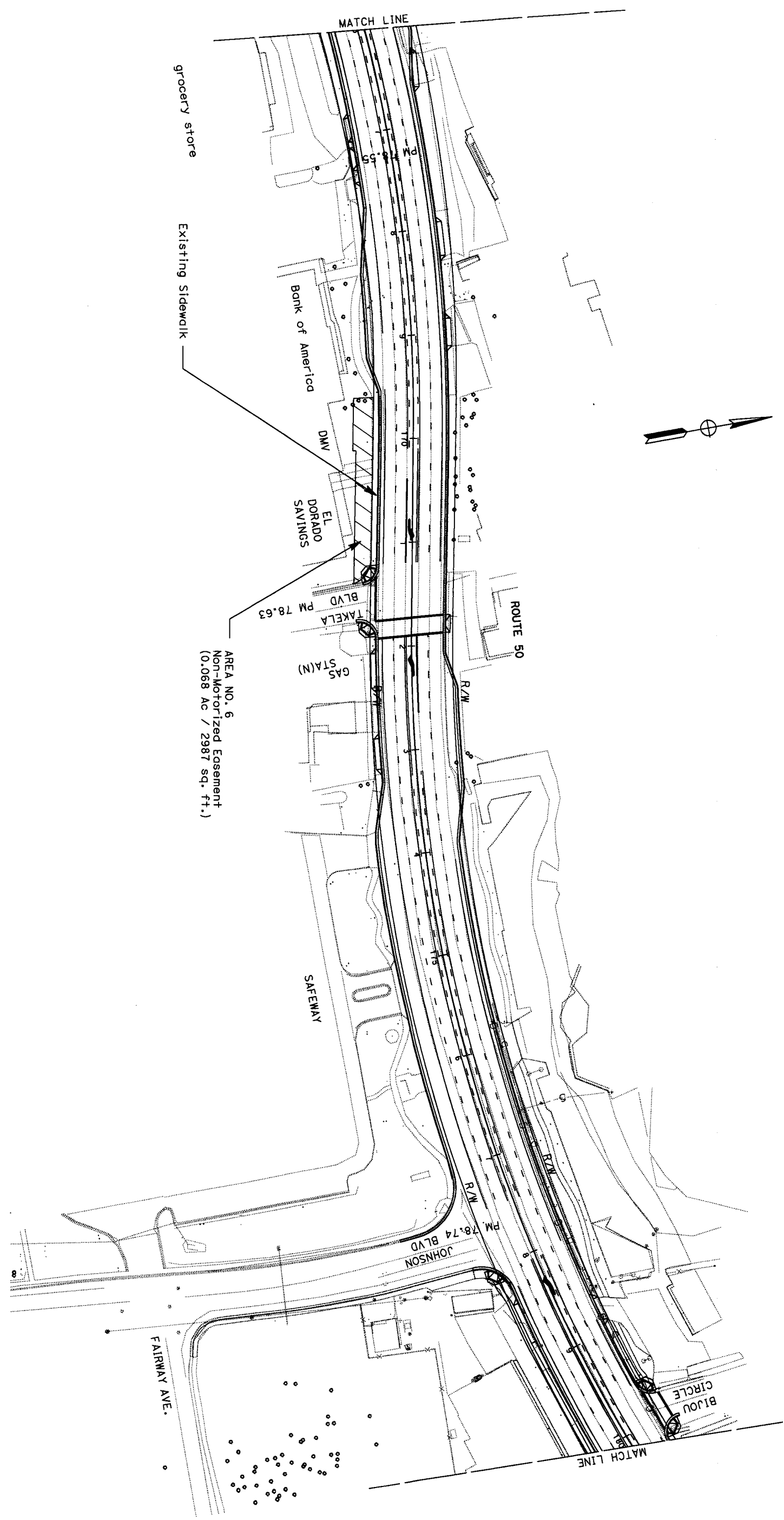
The State of California or its officers or agents shall not be responsible for the accuracy or completeness of electronic copies of this plan sheet.

To get to the Caltrans web site, go to: <http://www.dot.ca.gov>

SCALE 1"=100' 3-4

STATE OF CALIFORNIA - DEPARTMENT OF TRANSPORTATION Caltrans NORTH REGION PROGRAM/PROJECT MANAGEMENT DESIGN BRANCH TT3	PROJECT ENGINEER	CALCULATED/ DESIGNED BY	DATE	REVISED BY		
	TAREK TABSHOURI	CHECKED BY		DATE REVISED		

SOUTH LAKE TAHOE HIGHWAY IMPROVEMENT PROJECT
EL DORADO COUNTY EASEMENT REQUIREMENTS
6-15-07



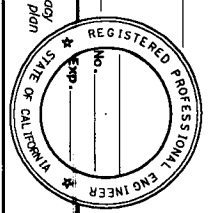
DIST	COUNTY	ROUTE	POST MILES TOTAL PROJECT	SHEET TOTAL SHEETS
03	ED	50		

REGISTERED CIVIL ENGINEER _____

PLANS APPROVAL DATE _____

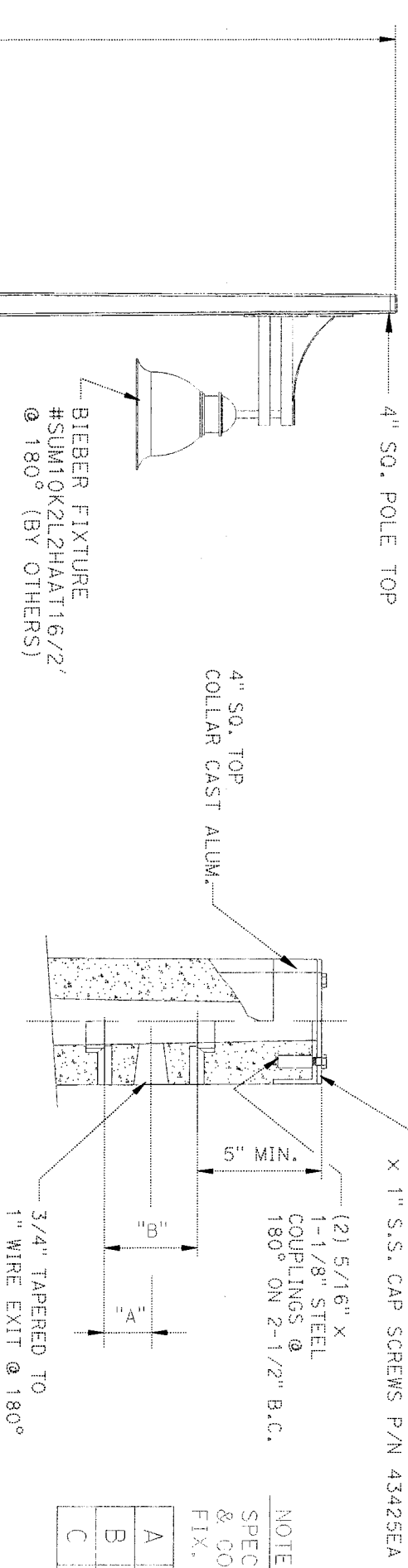
The State of California or its officers or agents shall not be responsible for the accuracy or completeness of electronic copies of this plan sheet.

To get to the Caltrans web site, go to: <http://www.dot.ca.gov>



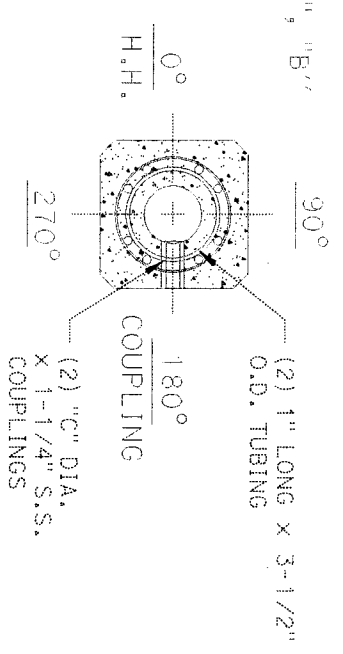
SCALE 1"=100'

REV.	DATE	DESCRIPTION	DRN.	APPR.

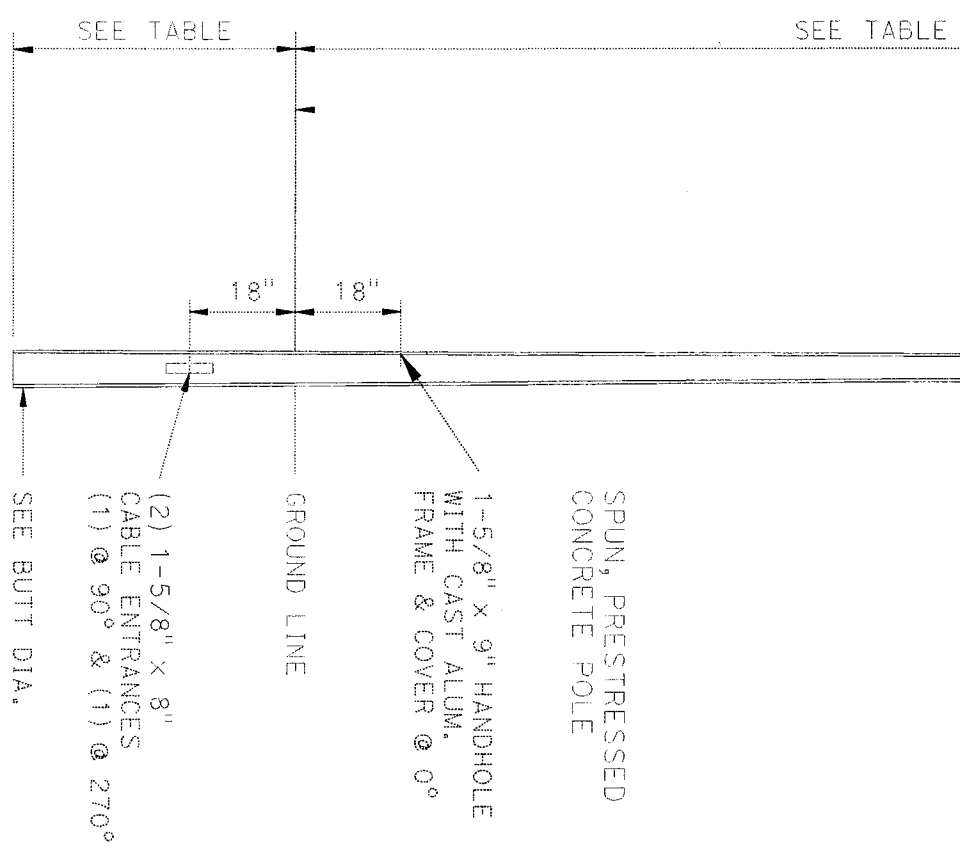


NOTE:
SPECIFY HOLE SPACING "A", "B", & COUPLING SIZE "C" FOR FIX. MOUNTING BOLTS

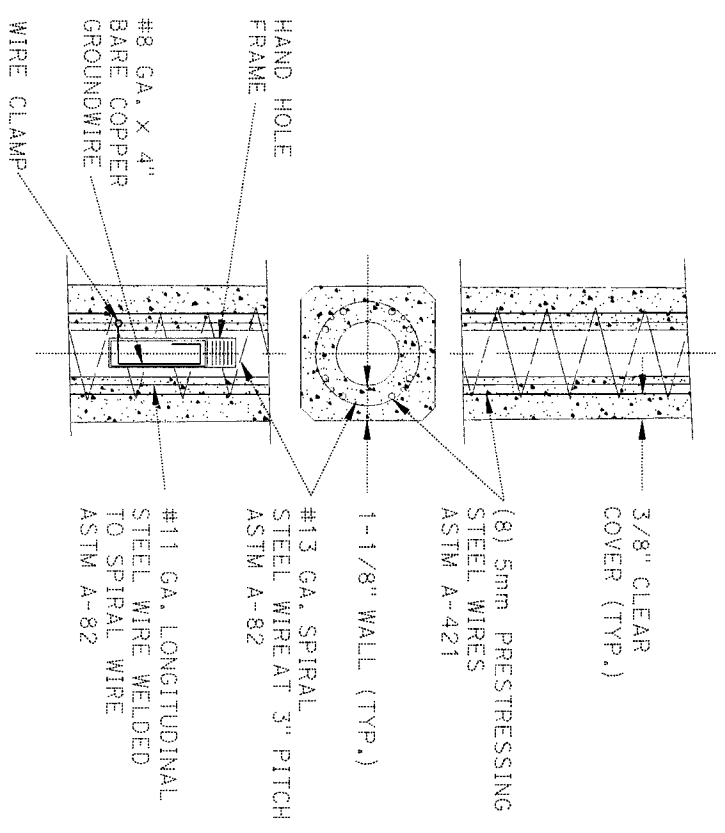
A	
B	
C	



SIDE MOUNT DETAIL



POLE SECTION



SEQ SMALL-EMBEDDED-SQUARE

POLE DESIGN-NATION	POLE HEIGHT ABOVE GROUND	EM-BEDED DEPTH	OVER-ALL LENGTH	BUTT DIA.	ULTIMATE G.L. MOMENT (ft. lbs.)	WEIGHT (lbs.)
SEQ-5.2	17'-0"	4'-3"	21'-3"	6-1/2"	12,980	540

() POLE REQ'D. WITH SINGLE SIDE INSERTS @ 180°.

NOTES:

- (1.) FINISH: #XXXX, POLE COLOR TO BE SPECIFIED WITH ARCHITECTURAL GLOSS COATING.
- (2.) ASTM C-150 TYPE III GRAY CEMENT.
- (3.) f'c @ 28 DAYS=7,000 PSI, USING SPUN CYLINDER TEST.
- (4.) f'c @ 28 DAYS=5,000 PSI, USING ASTM C-31 CYLINDER TEST.
- (5.) POLES MANUFACTURED TO ASTM C-1089-97 SPECIFICATIONS.

APPROVED BY _____ DATE _____

AMERON POLE PRODUCTS & SYSTEMS

CITY OF SOUTH LAKE TAHOE, CA.
SEQ-5.2 (XXXX) W/SINGLE SIDE INSERTS

THIS DOCUMENT CONTAINS INFORMATION WHICH IS PROPRIETARY TO AMERON. IT SHALL NOT BE REPRODUCED, USED OR DISCLOSED TO ANYONE WITHOUT THE PRIOR WRITTEN PERMISSION OF AMERON.			
DRAWN :	G.C.	2/03	SCALE
CHK'D:			NONE
DWG. NO.			REV
SK023003			