

# Connector Ahead

**El Dorado County Board of Supervisors**

**May 11, 2010**

**Capital SouthEast Connector Project Overview**



**Tom Zlotkowski - Executive Director**

[www.connectorjpa.net](http://www.connectorjpa.net)

# Presentation Outline

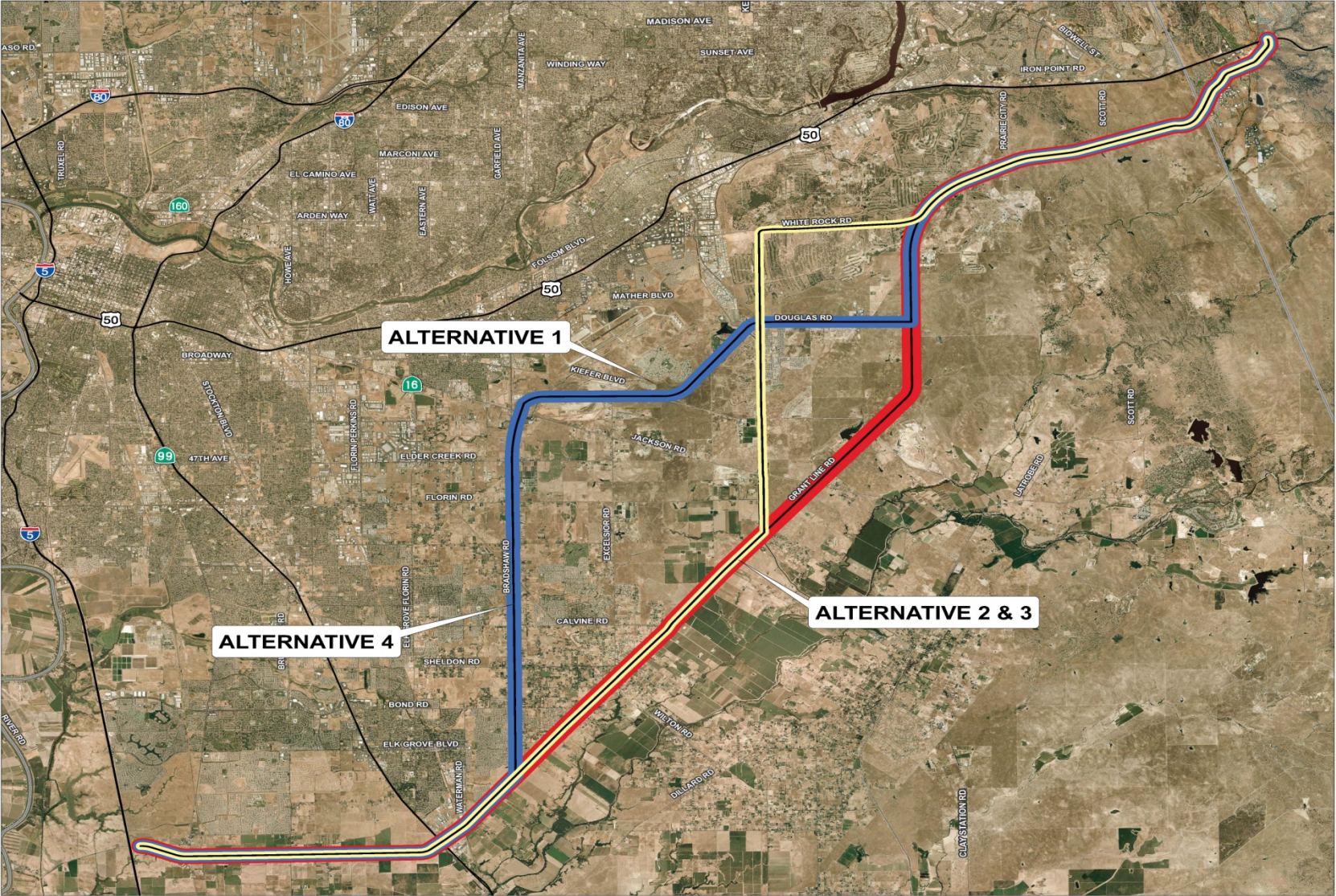
- Project Background
- Status of Environmental Process
- El Dorado County segment considerations
- Status of project funding
- Proposed near term schedule
- Questions

# Project Overview

- Approximately 35 miles in length
- Terminus at Hood Franklin Rd/I-5 & Silva Valley Pkwy/US 50
- Involves 5 jurisdictions:
  - Rancho Cordova, Folsom, Elk Grove, Sacramento County, and El Dorado County
- 95% along existing roadways
- 92% within USB/GP of all jurisdictions
- Four alignment alternatives under study
- Currently funded thru Measure A - \$131M with \$10K Member Jurisdiction contributions annually



# Overall Look (4 Alignments)

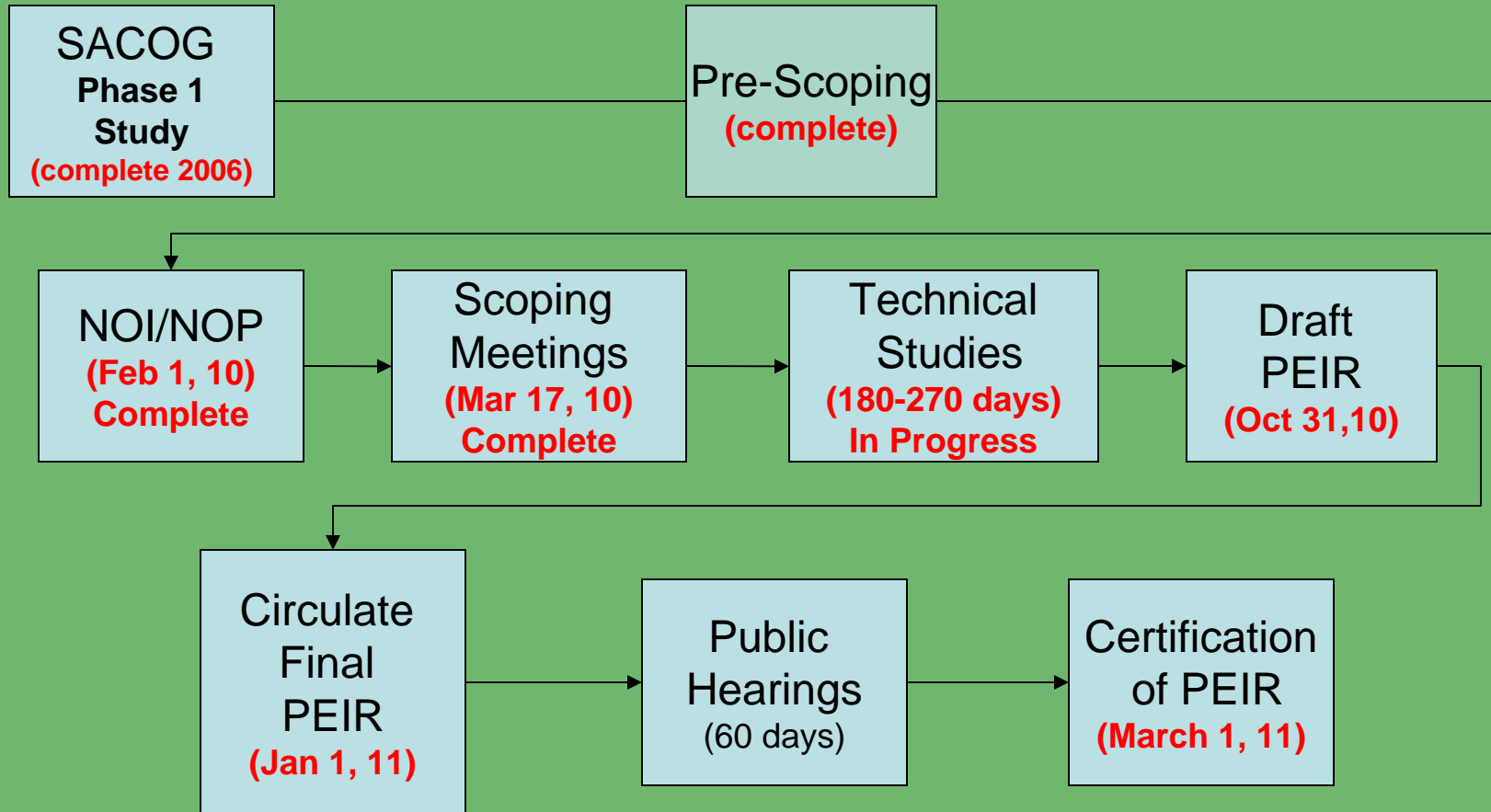




# Environmental Processing

- Proceed with CEQA only programmatic document to define preferred alignment
- Programmatic document used to identify general project-wide features across entire corridor
- NEPA document not being pursued at this time since no federal funds are being requested
- SSHCP will provide initial guidance on future Fed. Permit requirements
- Segment specific NEPA documents will be secured as needed for delivery and funding

# Program EIR Timetable

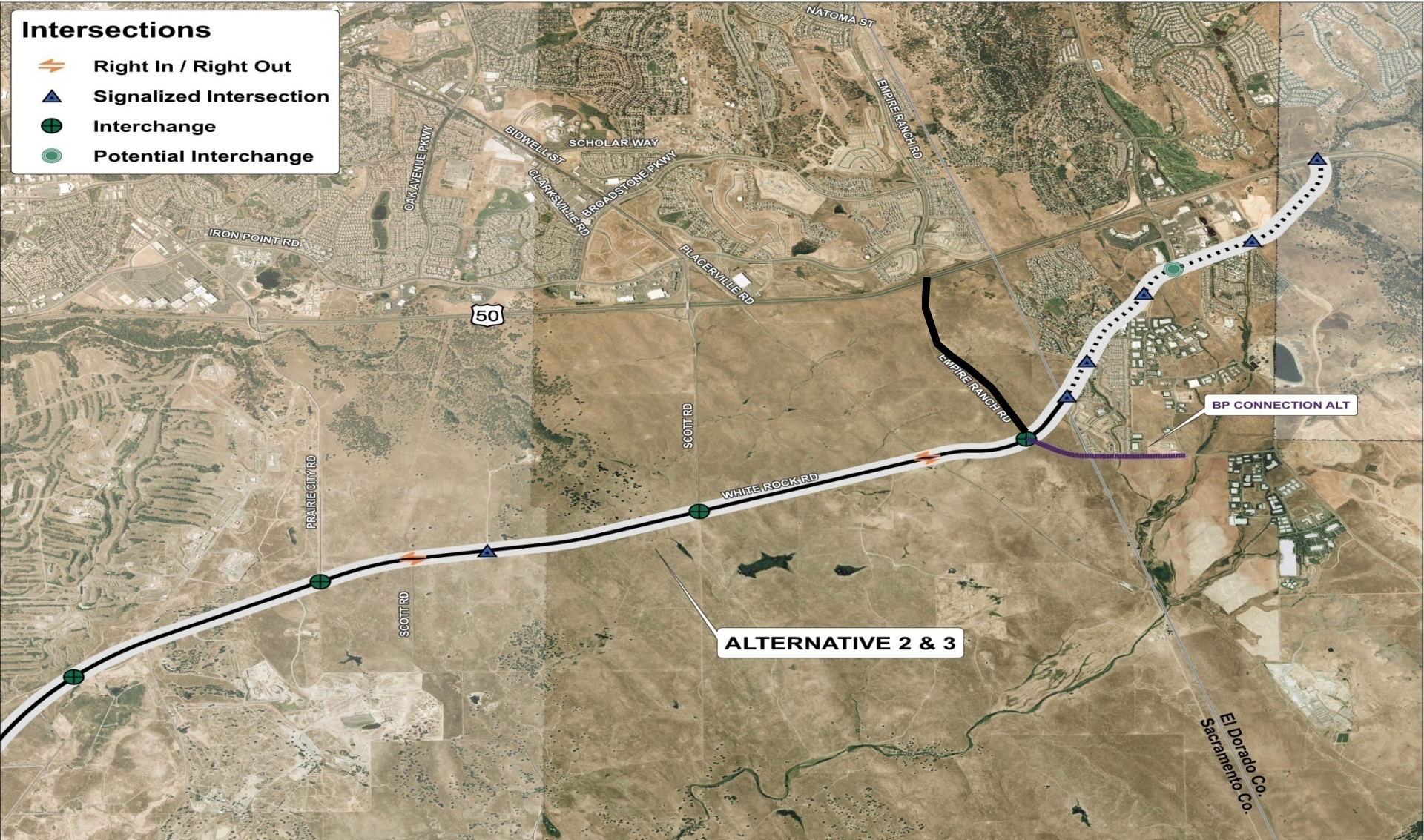




# View of El Dorado County

## Intersections

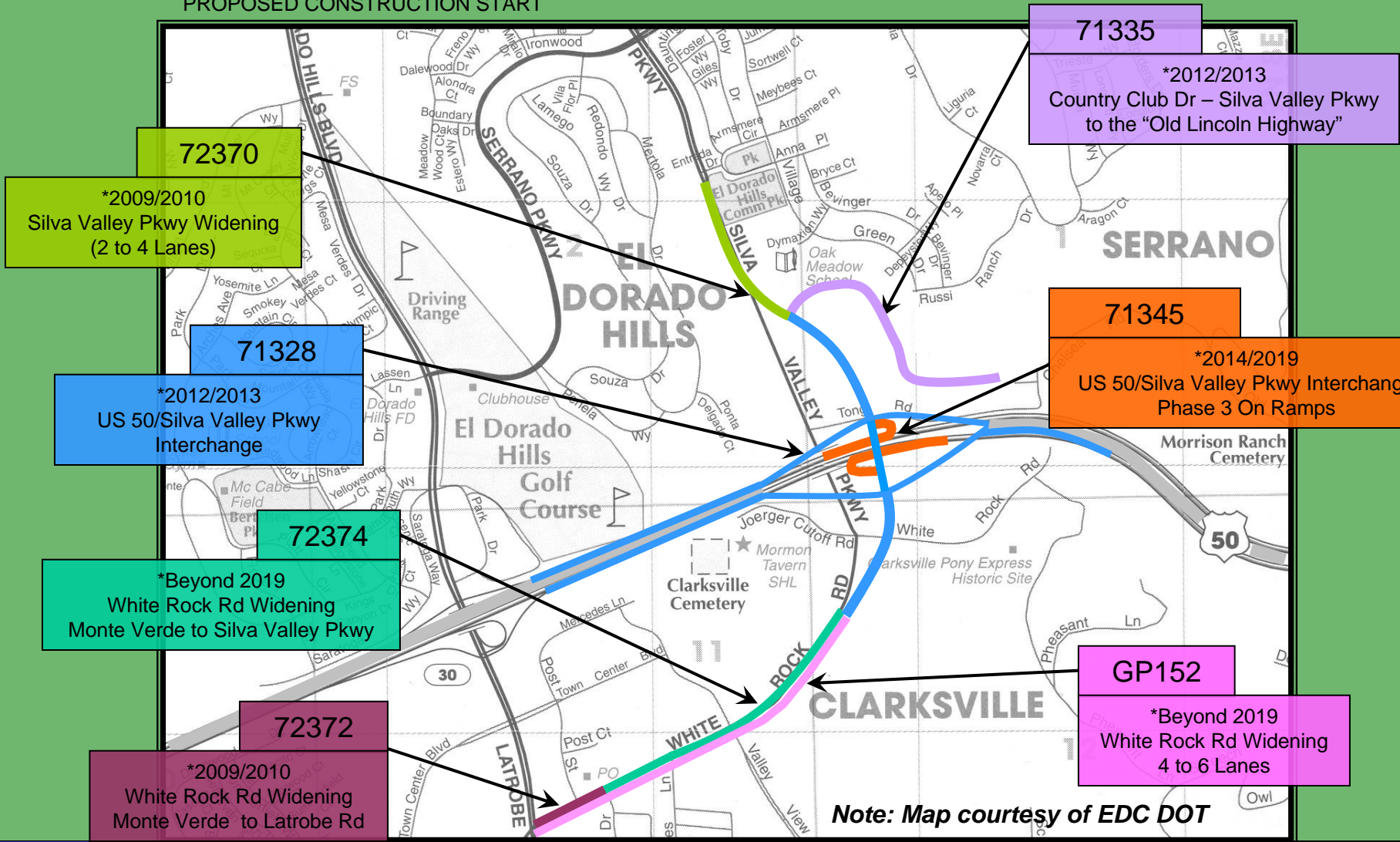
-  Right In / Right Out
-  Signalized Intersection
-  Interchange
-  Potential Interchange





# Silva Valley Interchange Projects

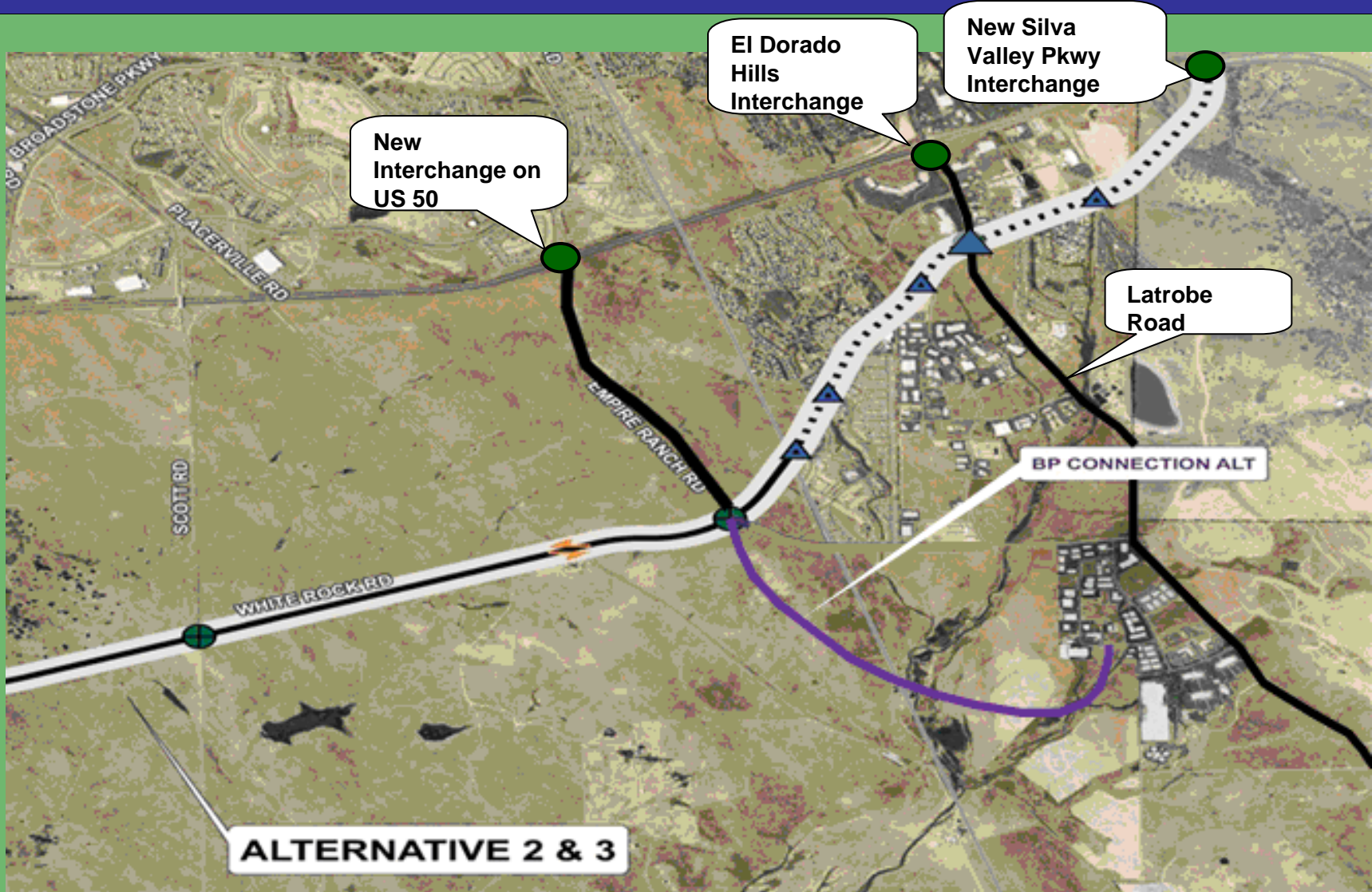
\* PROPOSED CONSTRUCTION START



Note: Map courtesy of EDC DOT



# Potential El Dorado Traffic Distribution Plan



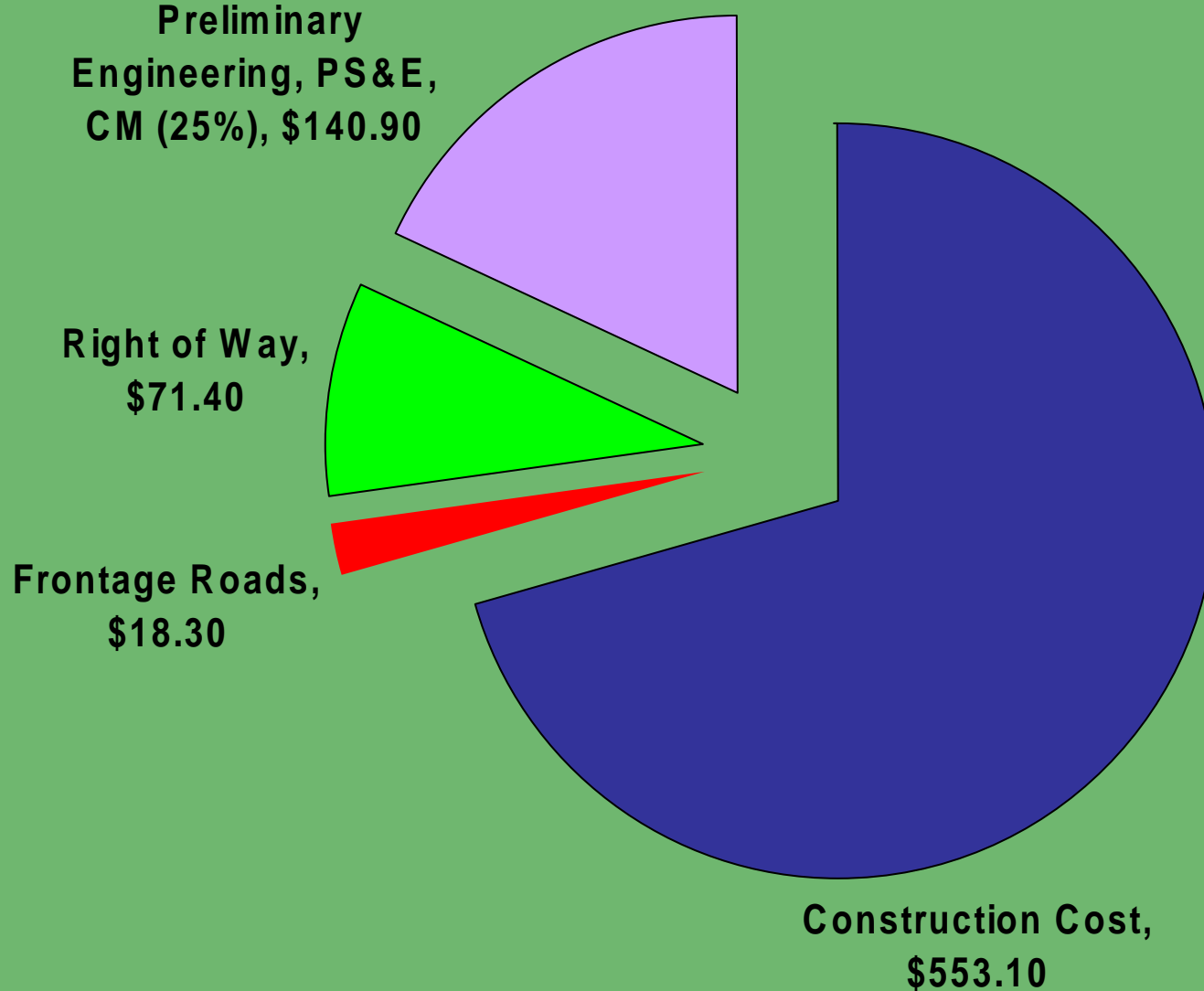
# EDC Traffic Considerations

- Continue working with EDC stakeholders to further investigate distribution and mitigation strategies
- Collaborate with DOT & EDCTC on CIP for capital relief
- Support additional alternative routes within Sacramento County/Folsom SOI
- Include connection point(s) for alternative routes in Connector Plan of Finance (POF)
- Facilitate connection permitting process
- Include partial design/funding for alternatives in Connector POF
- Prepare appropriate documentation and PEIR measures to address EDC issues as analyzed



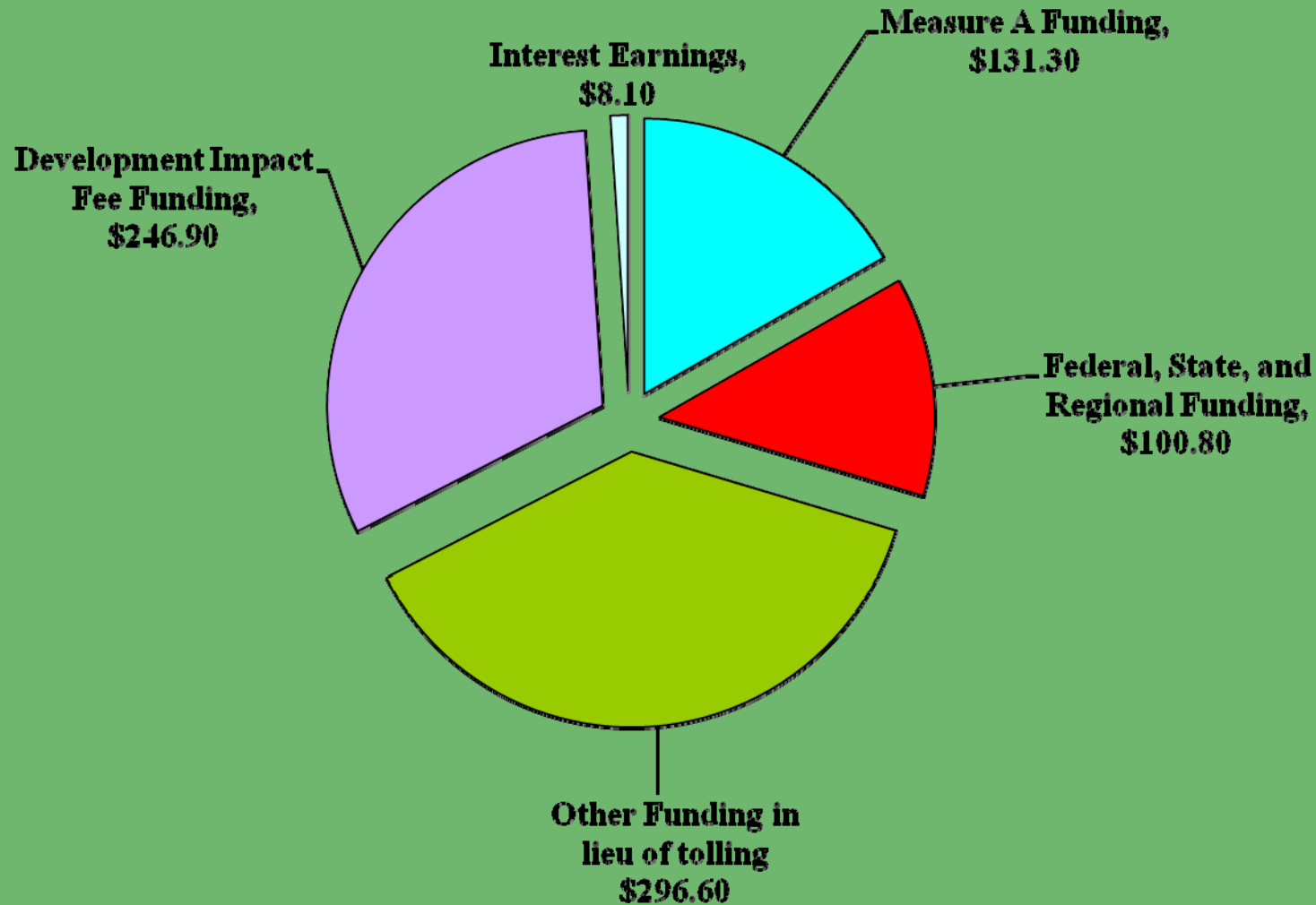
# Project Capital Costs

(\$ Million)



# Funding Sources Other Than Tolling

Preliminary(\$ Million)





# Possible Strategies to Complete Funding Plan

- Project Acceleration to Reduce Various Cost Elements
- Design Build for Major Segments
- Additional Sales Tax Component
- User Fees
- Regional Developer/Transportation Fee Overlay
- Individual Developer Fee Commitments

# Project Schedule

- Introduce Plan of Finance - January, 2010
- Release Notice of Preparation - February, 2010
- Begin EIR Technical Studies - April, 2010
- Explore Outside Financing and Delivery Options - December, 2010
- Programmatic EIR Approval - April, 2011
- JPA Alignment Approval - May, 2011



Questions?



[www.connectorjpa.net](http://www.connectorjpa.net)